

THE TATLER
1938

64200

5-4-48

the Students of
WILLIAM JEWELL COLLEGE
Liberty, Missouri

Present *the*
1938 TATLER

Copyright

WILLIAM JEWELL COLLEGE

375.78
W. J.
1938
1938

FOREWORD

Not unlike many other college annuals in form, the 1938 *Tatler* seeks to find distinction in that it is strictly William Jewell in nature. It has been the first aim of the staff to present a complete and accurate record of the activities on our campus this year emphasizing Jewell traditions and ideals. To you, the students, the faculty, and the friends of William Jewell College we present this record the 1938 *Tatler*. Simplicity is its keynote; student life, its theme; variety of presentation, its spice.

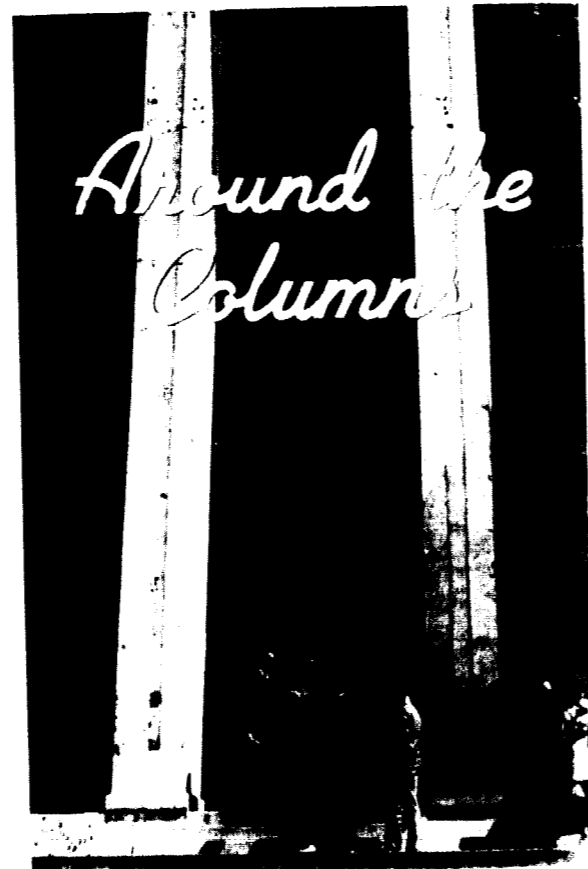
D e d i c a t e d

. to the outstanding performance of the year which typifies William Jewell's spirit of achievement. Motivated by this self-same spirit of achievement and accomplished through whole hearted student cooperation, it attained a degree of perfection worthy of praise and recognition. The *Tatler* wishes to recognize the spring Music Festival as the most successful, progressive venture made this year on the William Jewell College "hill."

... THRU

THE

BOOK

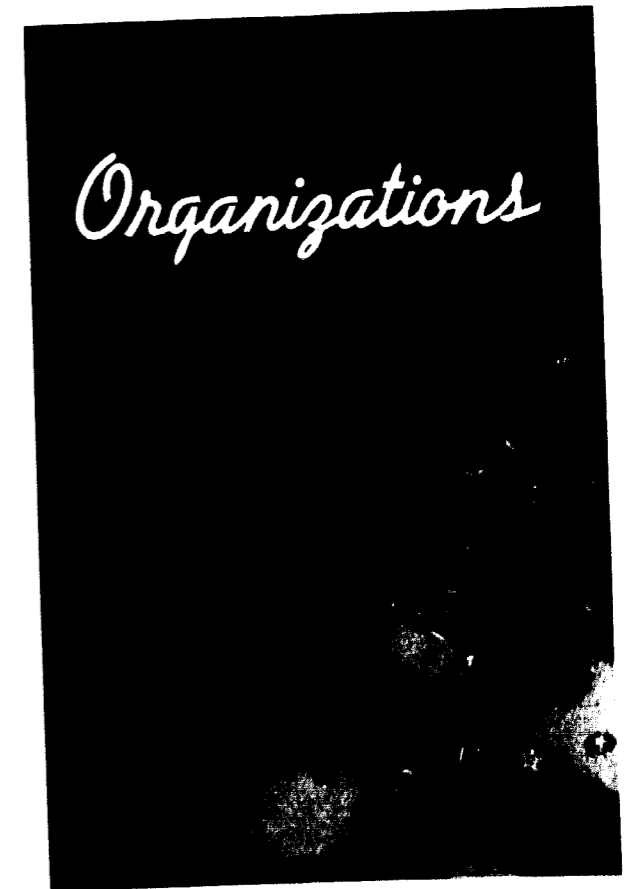


Around the Columns

The School



Sports



Organizations

Organizations



WILLIAM JEWELL COLLEGE

Classes

IN MEMORIAM

For fifteen years (1922-37) Dr. J. C. Armstrong served the college as librarian. He was an alumnus of the college having been graduated in 1875. His scholarship, his experiences as a pastor and as an editor, and his genial personality endowed him with a unique capability, but the fact that he could be depended upon to uphold his ideals and to keep his deep faith in God and people gave to those about him a sense of security and inspiration.

He was a congenial co-worker, an excellent friend and a Christian gentleman in the truest sense of the word. His daily replenished store of knowledge fascinated and inspired many. College people who came to him with their interests in football, forensics, reading, or the mere job of living, always found him to be a staunch and enthusiastic helper and adviser.

Dr. Armstrong's love and loyalty for the college and the library were unsurpassed. His friends on the "Hill" loved him for that spirit. One of the highest tributes which we may pay to his memory is to carry on his spirit of Christian love and college loyalty.



Dr. Armstrong

WILLIAM JEWELL COLLEGE

Liberty, Missouri

HISTORY OF THE COLLEGE

Soon after the organization of the Missouri Baptist General Association in the year 1835 the first steps were taken for the establishment of an institution of higher learning for young men and in particular for candidates for the Christian Ministry. There was no definite action taken until 1843, when Dr. William Jewell of Columbia, Missouri, made to the General Association the conditional offer of ten thousand dollars in lands as a nucleus for the building and the endowment of a college. This offer was not accepted until 1848. Soon a charter was granted by the legislature and approved by the Governor, February 27, 1849.

In accordance with the terms of this charter the subscribers to the buildings and the endowment funds met in Boonville for the purpose of selecting a site for the college. After a great contest, the town of Liberty the county seat of Clay County was selected, and it was decided that the name of the college should be William Jewell.

This college was opened to students (in the old Liberty Academy) on January 1, 1850. Then on account of financial embarrassment the school survived the year 1852-53 as a private enterprise.

In 1853, the trustees, resuming full control, called to the presidency Rev. R. S. Thomas, D. D., from a professorship in the State University at Columbia. This administration continued until the summer of 1855, when new financial trouble caused the suspension of the college for the next two years.

The college reopened in the fall of 1857 under the presidency of Rev. William Thompson, LL. D.

In 1867, Rev. Thomas Rambaut of Louisville, Kentucky, was called to the presidency. The first years of his incumbency were devoted to the reorganization and the increasing of the endowment.

Dr. Rambaut's administration ended in the spring of 1874 on account of ill health.

The office of President remained vacant until the summer of 1892. In the meantime

the affairs of the college were administered by the Faculty, acting through a chairman.

In June, 1892, Dr. John Priest Greene, Pastor of the Third Baptist Church of St. Louis, was elected President of the college. Under his administration the number of students was increased greatly, a library with a capacity of 100,000 volumes was erected, also a modern dormitory and a most excellent science building. Many new departments of instruction were added.

On January 1, 1920, Dr. Greene resigned his office as President and was succeeded by Dr. David Jones Evans, who for many years had been Dean of Biblical Literature and Religious Education. Dr. Evans served until September 1, 1921, when he resigned to become pastor of the First Baptist Church in Kansas City, Missouri. Dr. Greene was again requested to act as President until a suitable person could be secured for the place.

On March 29, 1923, the Trustees elected as President Dr. Harry Clifford Wayman of Louisville, Kentucky. Dr. Wayman was a professor in the Southern Baptist Theological Seminary. He served until June 11, 1928.

On July 3, 1928, Dr. John F. Herget was selected by the trustees to the presidency. Dr. Herget is an alumnus of William Jewell. He came to the college as its president from a pastorate of twenty-five years at Ninth Street Baptist Church, Cincinnati, Ohio.

The buildings of the college are an inspiration to everyone, especially Jewell Hall with its large white pillars reaching impressively and stately into the sky. It is the oldest building on "The Hill." It was built in the early fifties, Dr. Jewell, the founder of the College, himself superintending the work.

The motto: "Deo Fisis Labora" ("Trust in God and Work") was the motto given by Dr. J. P. Greene. When President Herget came to Jewell in 1928, he requested the motto be placed where it is now—above the stage in the Gano Memorial Chapel—always presenting a challenge to every student.

BOARD OF TRUSTEES

- Amick, E. E. Fairfax Bldg., 101 W. 11th St.
Kansas City, Mo.
- Atwood, Judge Frank E. Jefferson City
- Brown, S. J. 200 New England Bldg., Kansas
City, Mo.
- Browning, W. P., Jr. Olathe, Kansas
- Fitch, W. M. International Bldg., St. Louis
Mo.
- Graham, J. P. Graham Lumber Co., St. Louis,
Mo.
- Griffith, W. H. Griffith Shoe Co., St. Joseph,
Mo.
- Johnson, W. D., President 2512 Fidelity
National Bank Bldg., Kansas City, Mo.
- Jones, Minetry, Jr. Jones Hat Co., St. Joseph,
Mo.
- McDaniel, Lex Kansas City Title and Trust
Co., Kansas City, Mo.
- Martin, T. D. Martin Motor Co., Springfield,
Mo.
- Martin, W. W. Masonic Orphans, Home, St.
Louis, Mo.
- Pew, J. B. Rialto Bldg., Kansas City, Mo.
- Pillsbury, E. S. 1827 Pine St., St. Louis, Mo.
- Proctor, Rev. L. M. Independence, Mo.
- Ray, A. T. Gallatin, Mo.
- Sample, Dr. Wm. T. 315 Pike St., Cincinnati,
Ohio.
- Storts, Com. P. Slater, Mo.
- Trimble, E. G. Insurance Bldg., Kansas
City, Mo.
- Tutt, Dr. A. M. Liberty, Mo.
- Weber, Rev. Paul Jefferson City
- Westbrook, W. M. Marshall, Mo.
- Wilhite, Hugh Excelsior Springs, Mo.
- Winger, Maurice Waltower Bldg., Kansas
City, Mo.

●Deceased.

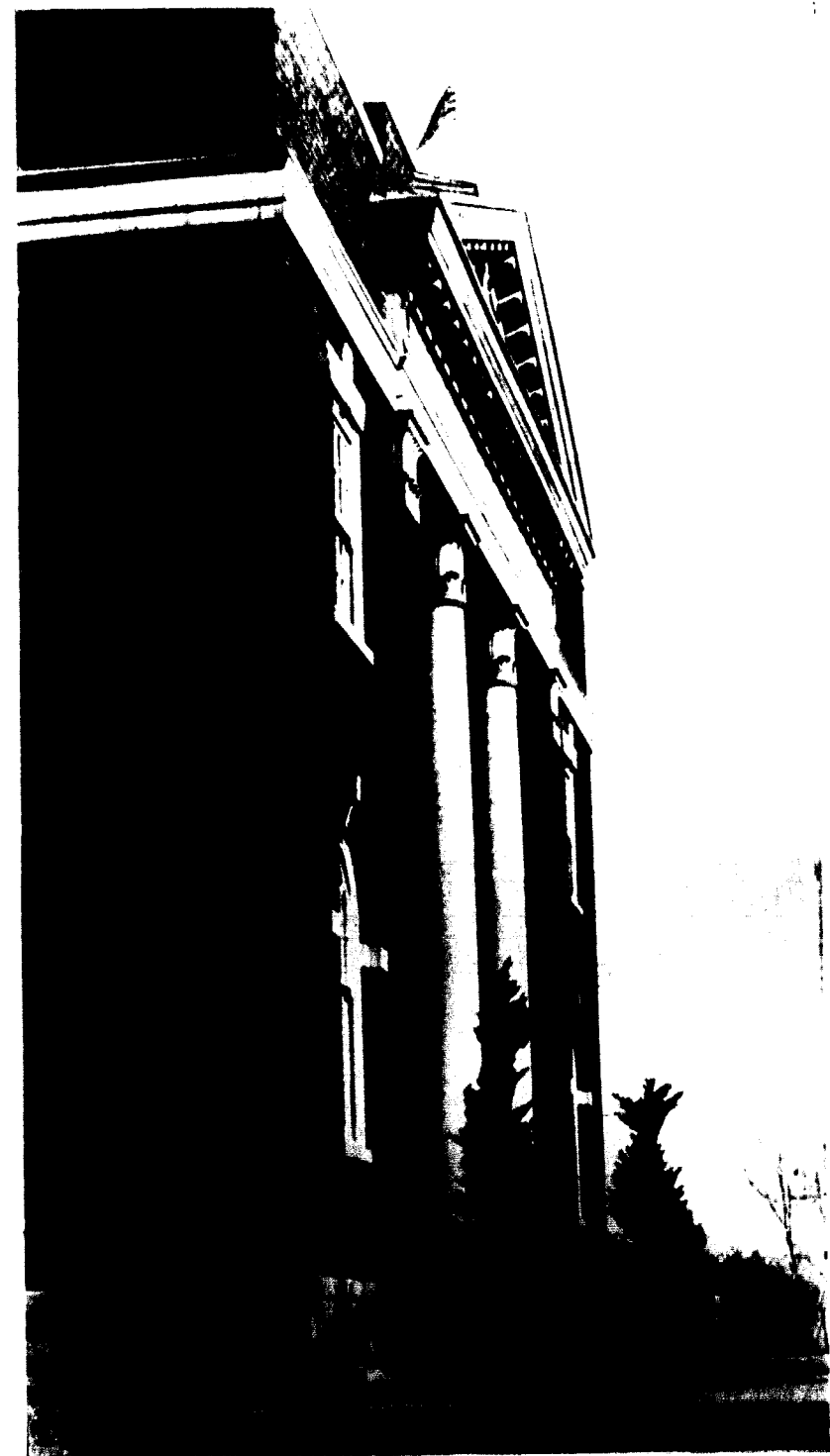


Miss Henrietta Sadler
TATLER REVUE QUEEN

STATELY

JOHN GANO
MEMORIAL CHAPEL

BEAUTY





Viewed from this unusual angle the "J" bench is clearly defined against the fast melting snow

NATURE'S

WHIMS



A stone bench, a shady tree - a haven for weary students

THE PRESIDENT



Dr. John F. Herget, A. M., LL. D.

Our President—the one whom we informally call “Prexy”—the one who has a warm place in his heart for every student—the one who has such a genuine smile that it demands a similar response. In business life he is an admirable executive; in his religion he is so practical, sincere, and effective; in his social life he is just “one of us”. He is interested in every sport and indeed he has the interest of every student constantly in his mind. As a lover of nature, his beautiful Mansion is stately yet magnificent with its array of flowering plants and shrubs. His poem concerning the “Old Oak Tree” located on the campus, will ever be remembered because it is truly expressive of his character—sturdy, staunch and ever ready to use his hands to spread his influence even as the shade from the tree.

To our President we offer our gratitude, love, and allegiance to do our best to make the “HILL” indeed a place of loftiness and aspiration which we have gained through the influence of one who has the highest Christian Ideals.

THE DEANS

Dr. Allen J. Moon, A. M., LL. D., is Dean of the College. Head of the Department of Ancient Languages, and Professor of Latin. Dean Moon did his undergraduate work in Howard College, and his graduate work in the University of Virginia and the University of Chicago. He has occupied the position of Dean of William Jewell since 1925 and was Registrar until 1937. Dean Moon's quiet dignity and twinkling smile are familiar to every student.



Dean Moon



Dean Lindsey

Miss Ruth Lindsey, Dean of Women and Professor of French and Spanish, received her A. M. degree in Columbia University. Dean Lindsey has done graduate work in the University of Chicago and the University of California. Miss Lindsey, as she is more often called, is endeared to the students by her friendliness and willingness to help.

THE FACULTY

George C. Beamer, A. B.
(William Jewell)
Instructor in Psychology.



Wilbur Bruner, A. M.
(University of Kansas)
Instructor in Spanish and French.



Robert Earl Bowles, A. B.
(William Jewell)
Head of Department, Athletic Director, and Coach.



George D. Davidson, Ph. D.
(University of Virginia)
Head of Department and Professor of French and German.



John E. Davis, A. B.
(William Jewell)
Head of Department and Professor of Physics.



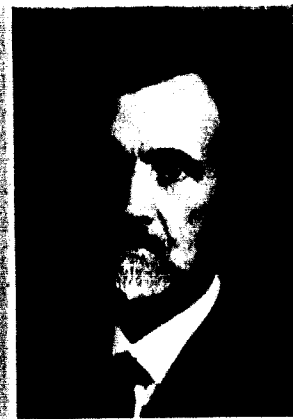
B. Edward Denton, A. M.
(George Peabody College)
Head of Department and Professor of Mathematics.



Frederick M. Derwacter, Ph. D.
(University of Chicago)
Professor of Greek.



Frank G. Edson, Ph. D.
(University of Colorado)
Head of Department and Professor of Chemistry.



Clarence Jerome Elmore, Ph. D.
(University of Nebraska)
Head of Department, Professor of Biology, and Curator of the Museum.



John Phelps Fruit, Ph. D.
(Leipzig University)
Head of Department and Professor of English Literature, and of Philosophy.



Henri Godfriaux, A. M.
(University of Wisconsin)
Professor of Chemistry.
Coach of football and basketball.



David Grosch
Head of Department and Professor of Music.



P. Caspar Harvey, A. M.
(William Jewell)
Professor of English Composition and Debate Coach.



H. I. Hester, Th. D.
(Southern Baptist Theological Seminary)
Head of Department and Professor of Bible and Religious Education.



Thurston Isley, M. Ed.
University of Kansas
Associate Professor of Education



Ulma R. Pugh, A. M.
(Baylor University)
Associate Professor of History.
Associate Professor of Economics.

FACULTY

Virginia D. Rice, A. M.
(University of Kansas)
Instructor in English.



W. Holt Smith, Ph. D.
(University of Chicago)
Head of Department and Professor of History and Political Science.



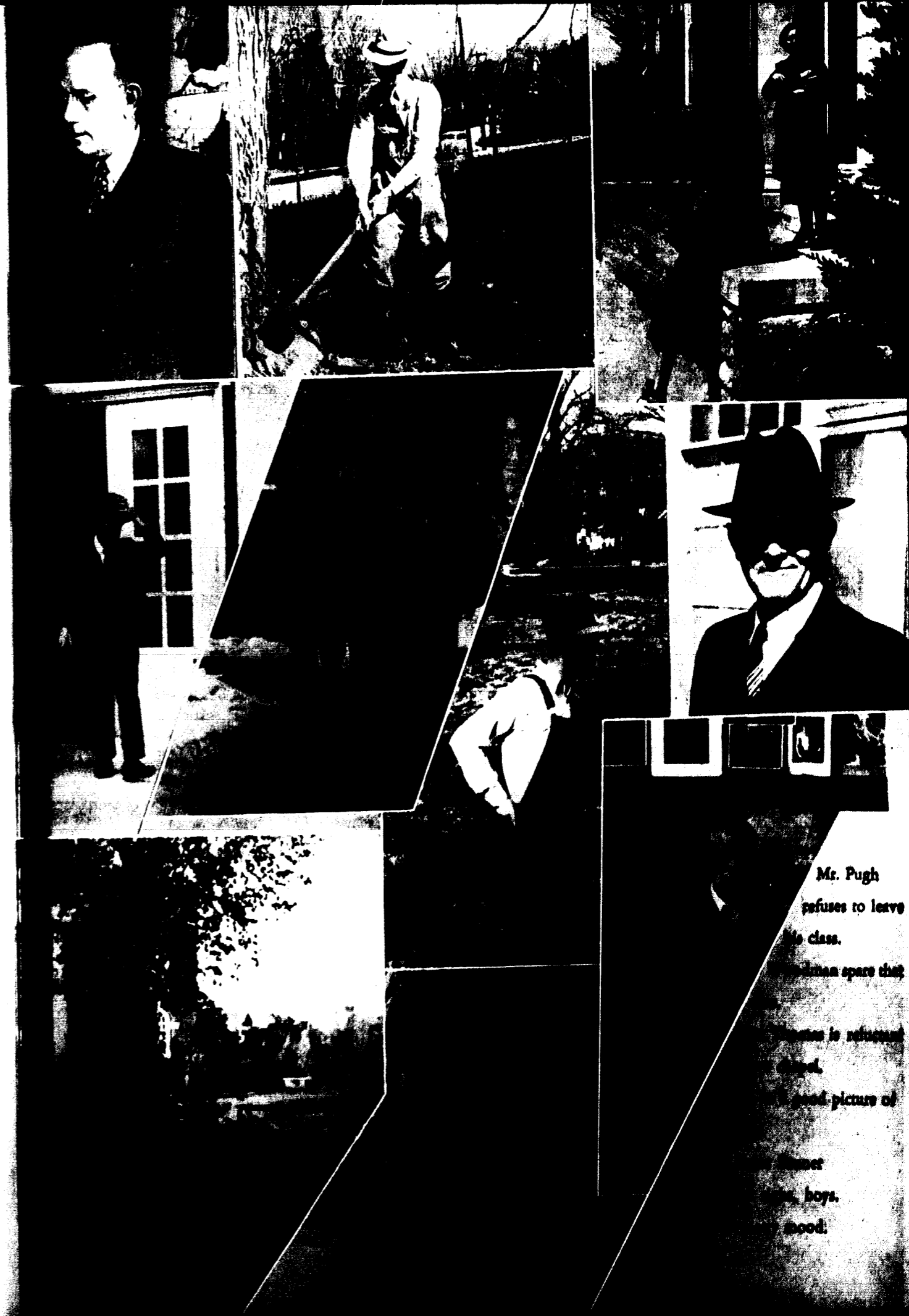
J. B. Sullivan, Ph. D.
(George Washington University)
Head of Department and Professor of Education.

Olive Thomas, A. B.
(William Jewell)
Instructor of Biology.



C. O. Van Dyke, A. M.
(University of Kansas)
Acting Head of Department and Professor of Sociology and Economics.

Joseph Van Trump, A. B.
(William Jewell)
Instructor in Mathematics.
Instructor in Physics.



Mr. Pugh
refuses to leave
the class.
...than space that
...is reluctant
...good picture of
...boys.
...mood.

OFFICE PERSONNEL

Opal Carlin
Librarian



H. B. Early
Secretary-Treasurer



Virginia Lewis
Assistant Treasurer



Mary Ruth Millen
Assistant Registrar



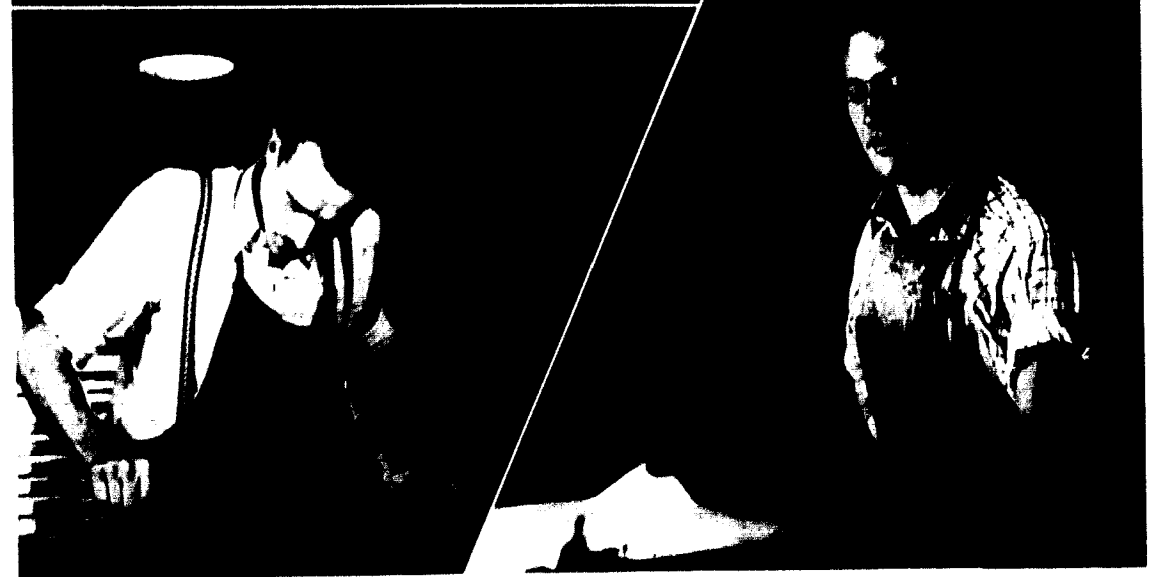
Chester J. Prince
Personnel Secretary



W. Holt Smith
Registrar



THE WILLIAM JEWELL PRESS



The Press in action: Hessell, Adams, Singleton's curls, Tomory, Newman, Manager Beamer
Finishing touches on the Student—by Banes; and then to the press—by Adams

The William Jewell Press, established in 1914, has become a vital part of the college and affects greatly the welfare of many students. It is one of the busiest spots on the campus and at the present twenty students are earning part of their college expenses in this printing shop.

This establishment has grown with the college. It now occupies most of the ground

floor of the chapel building and its operating facilities include photo-engraving equipment as well as a large modern printing press. The press prints all college and student publications as well as various types of commercial printing.

Mr. George C. Beamer, manager, has been associated with the press since 1925 and has served in the capacity of manager since 1936.

MELROSE

Melrose Hall is an attractive modern dormitory which accommodates sixty-five young women. Besides dormitory facilities it contains the Y. W. A. room and two sorority chapter rooms. The student government of Melrose this year was under the capable hand of Thelma Thomasson, president. The social chairman arranged such activities as formal dinners, exchange dinner dates with New Ely, and the Christmas party. Melrose is supervised by Dr. and Mrs. H. I. Hester assisted by Mrs. Visa Brown. Mrs. Elsie Keller is the dining hall supervisor and Miss Irene Dinus, R. N., is health supervisor.



Mrs. Hester



Dr. Hester

NEW ELY

New Ely is a larger three-story building located almost opposite Melrose. It offers a school residence for over a hundred boys. The spacious lobby provides a fine recreational center. The student government of New Ely takes the form of a disciplinary council composed of a representative from each corridor and a faculty committee.

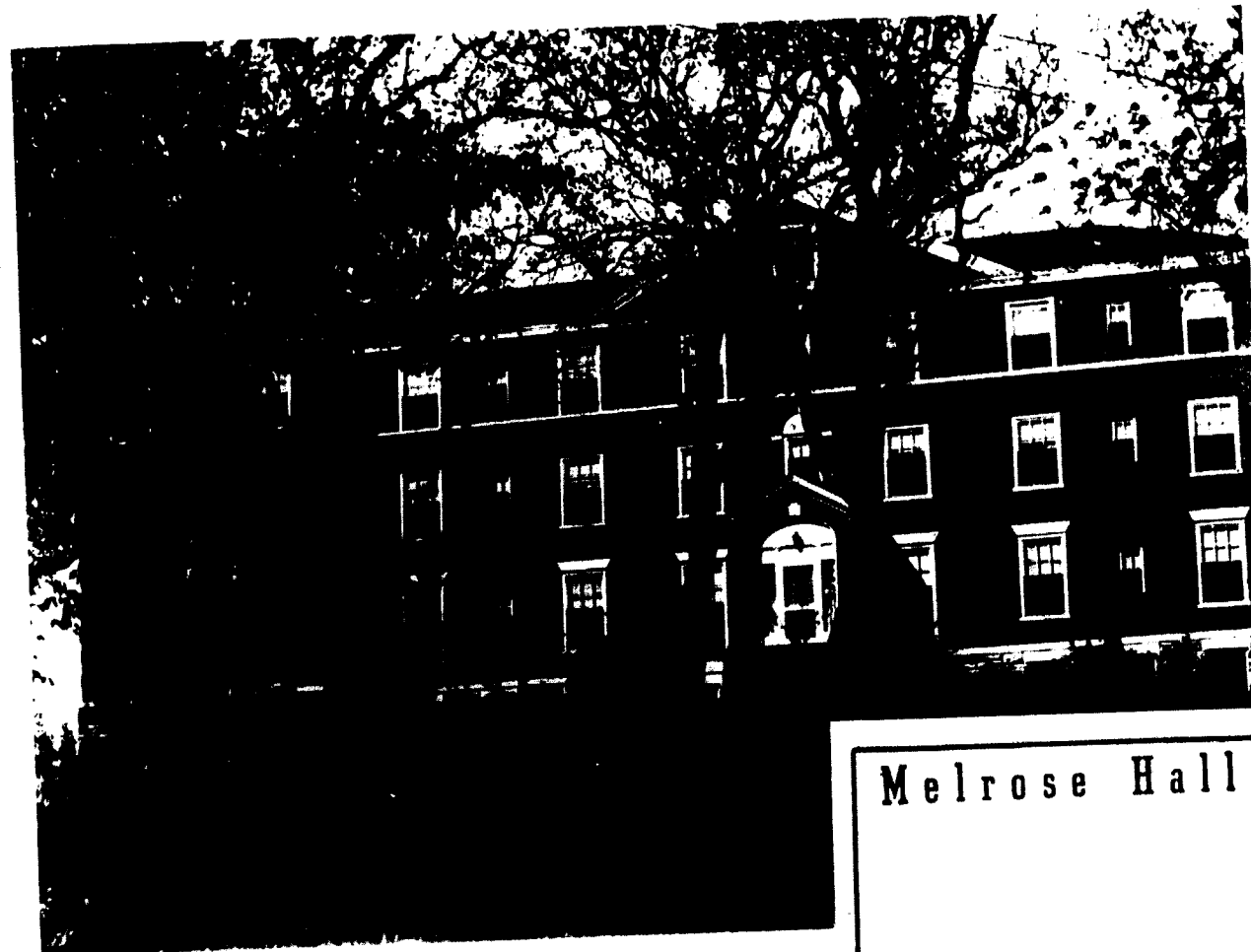
The social activities in addition to the exchange dinner dates with Melrose include all-school parties and open house on various occasions of celebration. Mr. and Mrs. Ralph Davidson are supervisors of New Ely with Miss Irbie Utz as dietician and Mrs. Grace Stanley as kitchen supervisor. Miss Dinus is also health supervisor for New Ely.



Mrs. Davidson

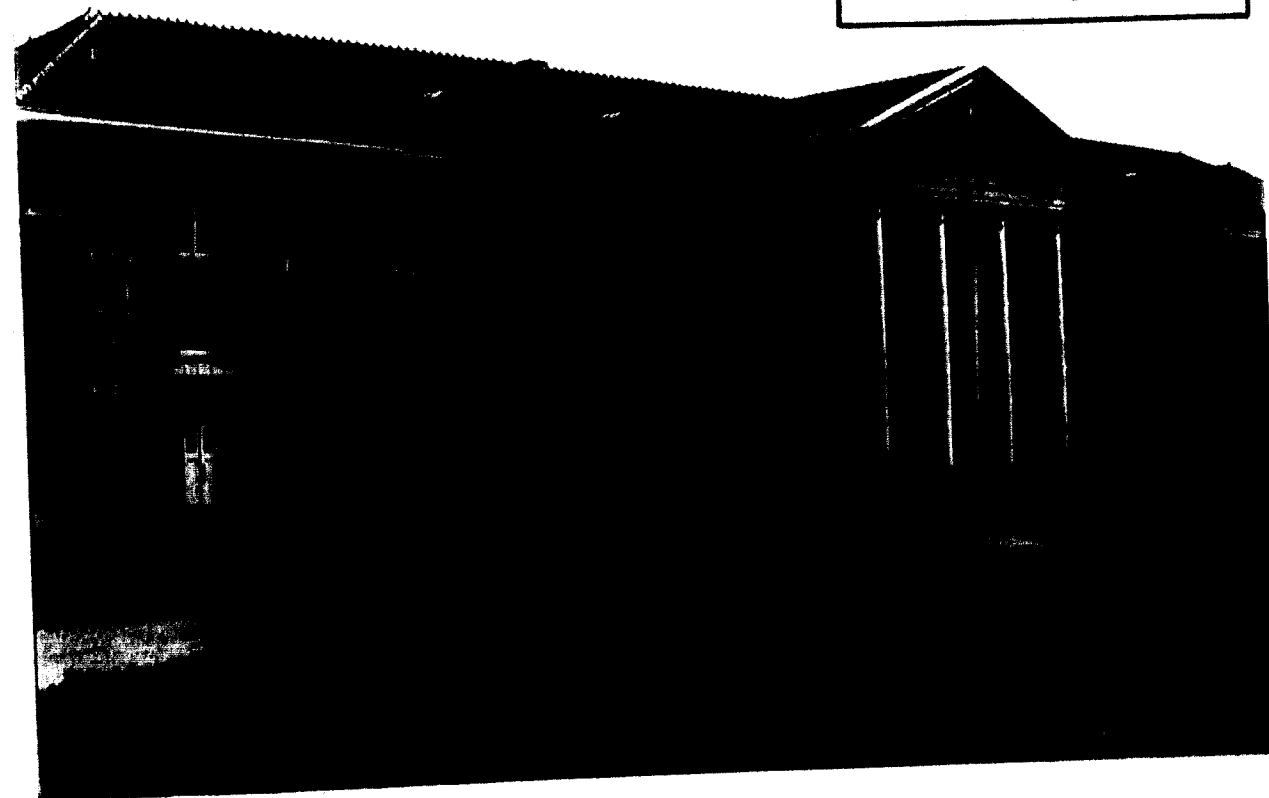


Mr. Davidson



Melrose Hall

New Ely Hall



THE CO-OP

Claude C. Boner
Manager



The Co-operative Book Store has been in existence since 1917 at which time it was instigated by Dean S. E. Stout. It has developed until it is now the center of student business and social activity on the "hill". Books, school supplies, and knickknacks to enhance the room of a college boy or girl may be purchased here. Because of its collegiate and congenial atmosphere the Co-op has been made the "jelly" place of Jewell's campus.

The store is conducted under the supervision of the College and its earnings are used to improve the campus. Claude Boner, a junior from Maysville, is the manager. He is assisted by Bob Moore, Wellington Westbrook, Joe Roberts, Lawrence Shoemaker, and Will Wyant.

Around the Columns



Miss Margaret Ruth Lynn
TATLER REVUE QUEEN



Miss
Constance Burkhardt

**MOST
POPULAR
GIRL**



Mr. Jack Hall

**MOST
POPULAR
BOY**



JEWELL SEASONS



Fifty maids all in a row.
All the girls love "Skillet"
Love is everywhere—

Amused spectators
Plenty of fine snowball makin's, boys.
The "Jelly-cr" seems to be the center of attraction.
Handsome couple, isn't he?



Muggs
Inspection
Little Boy Blue has lost his horn

Wide open for Jewell
With pleasure

Freshman lower appendages
Gale displays his catch
Tripp entertains the 1:15 crowd



"Judge"
Well—
A New Ely conflag

Notice the jaunty angle of the hat

The cameraman's favorite subject
Still they linger outside
Such pleasant fellows

STUDENT ASSISTANTS

BIBLE

Gibbs, Lloyd

BIOLOGY

Barrett, Jack

Knight, Vernon

Rainwater, Ivan

Weakley, Mildred

Burkhardt, Constance



CHEMISTRY

Godfrey, Paul

Jewell, Walter

Rutledge, Wallace

Thorne, Wiley



EDUCATION

Burkhardt, Constance

Downing, Beebs

McCampbell, Helen

Stoeltzing, Mildred



ENGLISH

Deisher, Bonnell

Henson, Ruth

Hollmann, Eugene

Kirkland, Robert

Williams, Clyde



FRENCH

Connely, Julia

GERMAN

Sword, Dorothy

HISTORY

Hall, Frances M.

Philbrick, Price

Winger, Maurice

MATH.

Bailey, Walter

PHYSICS

Clarke, George

Shouse, T. J.

Wilson, George

Trotter, Joe

POLITICAL SCIENCE

Newport, John

Smith, Mildred

SPANISH

Huff, Warren

Rameris, Louis

Thirty-three



Student

GOVERNMENT

The Student Senate, composed of the student body president, all class presidents, and vice-presidents of the two upper classes serves as the official representative of the student body in all matters concerning that body as a whole. Its duties, described in the constitution of

the Student Association are limited to the supervision of elections and appointment of committees. The Senate with three faculty members compose the Board of Control of Student Publications.



Amick

Heaton

Knight

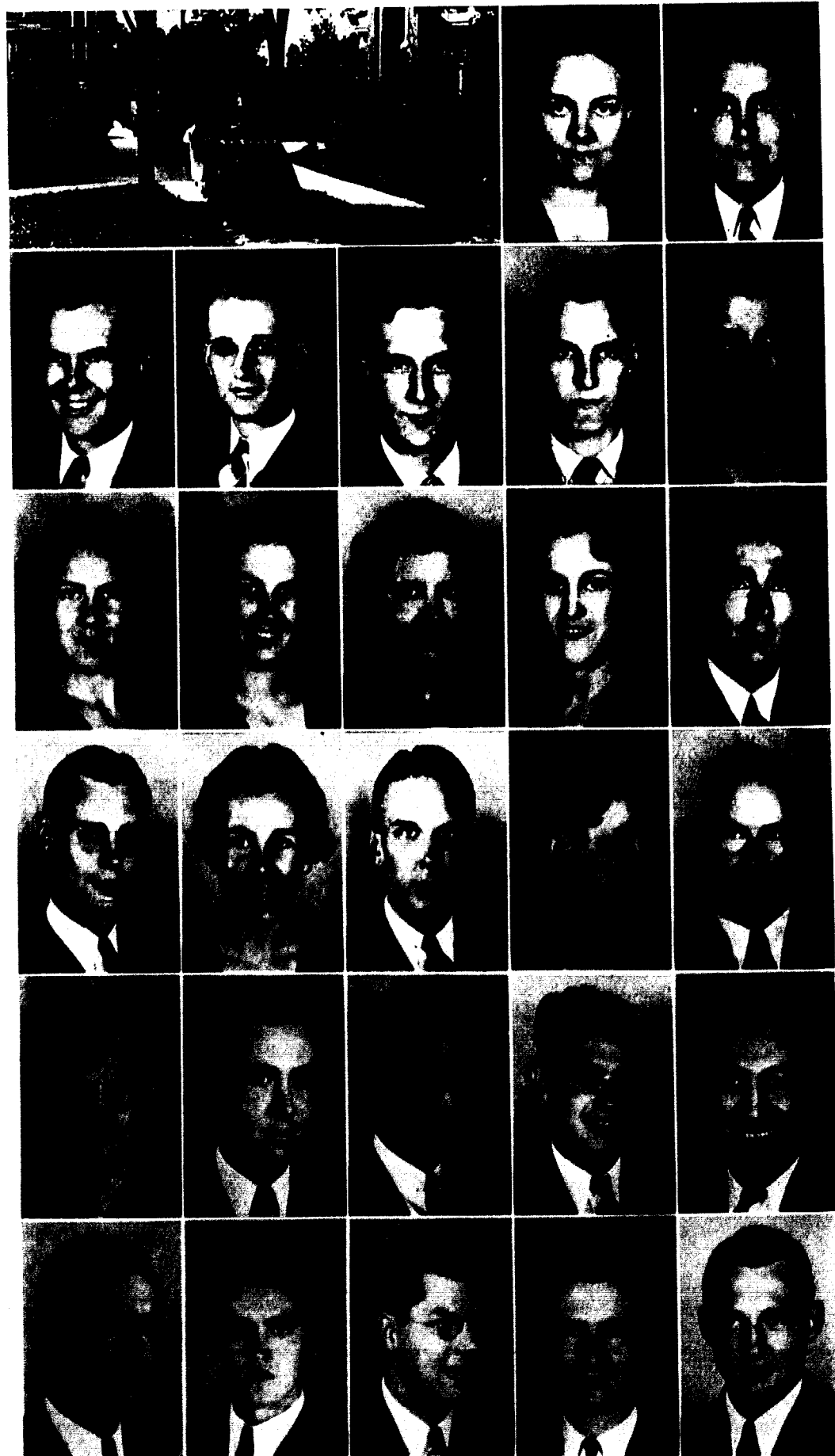
Sharp

Solomon

Sword

MEMBERS

- | | |
|------------------|--------------------------------|
| Walter Sharp | President of Student Body |
| Lynn Solomon | President of Senior Class |
| Dorothy Sword | Vice-president of Senior Class |
| Victor Knight | President of Junior Class |
| Anna Lois Heaton | Vice-pres. of Junior Class |
| Harold Sheerer | Pres. of Sophomore Class |
| Eugene Amick | Pres. of Freshman Class |



FIRST ROW

ARTHUR, VIRGINIA
 Kansas City, Kans.
 English French
 T N T, Panaegis, Fr. Disciplinary
 Comm.

AUBUCHON, GLENWOOD
 Kirkwood
 History Economics
 I. R. C., Alpha Phi Omega, Tennis '38.

SECOND ROW

BAILEY, WALTER Casper, Wyo.
 Chemistry Mathematics, Biol.
 Ministerial Group, Math. Ass't.,
 Aeons, Men's Biology Club, I. R. C.,
 Theta Chi Delta, V.-Pres. '37.

M.C.A.U. '36, Track '36-7, Aeons,
 Kappa Alpha, V.-Pres. '37, "J" Club.

38, Sigma Tau Delta, Jr. V.-Pres. '37,
 Stud. Senate '37, Stud. Staff '37, Chr.
 Relig. Assembly Comm., W. J. Chr.
 Assoc. '38, Girls' Glee Club '35, Sec-
 ond State Extemp. Contest '37, Sec-
 ond State Debate '37, Panaegis, 1st
 Extemp. Missouri-Iowa Provincial
 tournament '37, 1st Women's debate
 Missouri-Iowa Provincial tournament
 '37, Biology and Psych. assistant, East-
 ern debate trip '38, Outstanding Sen-
 ior '38, Who's Who '37 and '38, Fr.
 Disciplinary Comm.

BARRETT, JACK P. Independence
 Chemistry Biology
 Theta Chi Delta, Men's Biology
 Club, Glee Club '35, Biology Ass't.

BRUNER, ESTIL Liberty
 French Spanish
 Aeons, "J" Club, Tennis, '36-8,
 Cap't. Tennis Team '38, Comm. Mem.
 W. J. Chr. Assoc. '37, Who's Who
 Among Amer. Coll. Stud. '38.

BOWLES, ROBERT E., JR. Liberty
 Physics Math.
 Football '34-8, Co-Cap't. '37, End
 M.C.A.U. '35, Basketball '35-8, Guard

BURKHARDT, CONSTANCE Liberty
 English Psychology, Education
 Pi Kappa Delta, Forensics '35,
 '36, '37, '38, Beta Lambda, Pres., 1937.

THIRD ROW

CEDERBURG, HELEN JEWELL
 Excelsior Springs
 English Latin
 Beta Sigma Omicron, Pres. '37,
 Panhellenic Council '36-8, W. J. Play-
 ers, Student staff '37, Panaegis. Glee
 Club '35-6, Jr. Class Sec. '37, Sr. Class
 Treas.

COWAN, SUE Liberty
 Sociology Spanish
 T N T, I. R. C., Red Hots, Glee
 Club, Stud. staff '37.

History Sociology
 Y. W. A., Comm. Mem. W. J.
 Chr. Assoc., Red Hots '36, Band.

CROCKETT, HELEN
 French Spanish

CUNNINGHAM, MARIANA
 Pitman, Ark.

DAVIS, NELSON Liberty
 Education English
 Comm. Mem. W. J. Chr. Assoc.
 '37, I. R. C. '38.

FORTH ROW

DUNLOP, RALPH Plains, Kans.
 History Bible
 Sigma Nu, Ministerial Group, I.
 R. C., Alpha Phi Omega, Pres. '38,
 Tattler staff '37, Men's Glee Club,
 Band, B. S. U. Council, Pres. W. J.
 Chr. Assoc. '38, Comm. Mem. '37.

DUVALL, MARJORIE Holt
 Education English
 T N T, Red Hots '36.

FOWLER, FERN Vandalia
 English Latin
 W. J. Players, Y. W. A., B. S. U.,
 Comm. Mem. W. J. Chr. Assoc., B.
 T. U. Director Second Baptist Church.

GIBBS, LLOYD Santa Ana, Calif.
 Greek Latin
 Sigma Nu, Ministerial Group,
 Men's Glee Club.

EDGERTON, HUGH Wichita, Kans.
 Biology German
 Sigma Nu, Chaplain '37, Lt.
 Commander '38.

GAITHER, HARVEY K. Kearney
 Chemistry Math.

GODFREY, PAUL R.
 Millville, New Jersey
 Chemistry, Mathematics, Theta
 Chi Delta.

HALL, JACK Fort Collins, Colo.
 History Economics
 Phi Gamma Delta, I.R.C., Alpha
 Phi Omega, Interfrat. Coun. '38, W.
 J. Players, Basketball '35, Wit and
 Humor '37, Stud. Staff '38, Tattler
 Staff '38.

HAMMON, WILSON Hannibal
 History English
 B. S. U. Council, Ministerial
 Group, Glee Club, W. J. Players,
 Comm. Mem. W. J. Chr. Assoc.
 HURST, HAROLD Liberty
 Bible Greek
 Ministerial Group, Alpha Zeta
 Pi, Men's Glee Club.

SIXTH ROW

INGLE, CLIFFORD Howard, Kans.
 History Political Science
 Ministerial Group, Alpha Zeta Pi,
 I. R. C.

Pi Gamma Mu, V.-Pres. '38, Sigma
 Tau Delta, Alpha Phi Omega, Inter-
 national Relations Club, William
 Jewell Players, V.-Pres. '38, Debate
 '36, '37, '38, Oratory '38, Head As-
 sistant Freshman English '36, '37,
 Assistant in Forensics '38, Literary
 Editor, Tattler '37, Assistant to man-
 ager of tournament of Mo. section of
 National Forensic League '36, '37, '38
 Congressman from W. J. C. National
 Student Congress '38.

KNIGHT, J. HOMER
 Kansas City, Kans.
 History Political Science
 Glee Club

JOLLY, LOREN Success, Ark.
 History Pol. Sc.
 I. R. C., Ministerial Group, Vice-
 Pres. '38 B. S. U. Coun., Comm.
 Mem. W. J. Chr. Assoc.

MARTIN, JACK R. St. Joseph
 English Latin
 Kappa Alpha, Comm. Mem. W.
 J. Chr. Assoc., "J" Club, Football let-
 terman '35-8, Guard M.C.A.U. '36,
 Basketball '36, Track '36-8, Co-Cap-
 tain '38.

KIRKLAND, ROBERT G. Liberty
 English Latin
 Kappa Alpha, Pi Kappa Delta,



FIRST ROW

MINOR, CARL Maysville
Sociology Psychology, Pol. Sc.
I. R. C., Pi Gamma Mu, Band.
MORALES, MILTON F. Kansas City
English Latin
"J" Club, Kappa Sigma, Track
'35-8, Basketball '35-7, *Stud. Staff* '35,
Poetry Contest '38.

SECOND ROW

PHILBRICK, PRICE Hickman Mills
History Political Science, Econ.
N. Y. A. director '35-8, Extemp.
speaker National Pi Kappa Delta Con-
test '38, W. J. C. Congressman to
National Student Congress '38, Phi
Gamma Delta, Corres. Sec. '37, Pres.
'38, I. R. C., Forensics, Pi Kappa Delta
Distinction Degree '38, Soph. Pres. '36,
Bd. of Control '37, Student Senate '37,
Interfrat. Coun. '37, Who's Who

THIRD ROW

SEVIER, HELEN MAY Liberty
English German
T N T, I. R. C.
SHARP, WALTER M. Liberty
English Latin
Kappa Alpha, Pres. '38, Bd. of
Control '37, Chairman '38, Student
Senate '37-8, Interfrat. Coun. '37-8,
Football letterman '38, W. J. Players,
I. R. C., "J" Club, Jr. class Pres. '37,
Student Body Pres. '38.
SHOUSE, T. J. Liberty
Physics Math.

FORTH ROW

STOELTZING, ERNST Liberty
History Social Science
Kappa Alpha, Football '35-6,
Guard M. C. A. U. '36, Track '37-8,
"J" Club, *Stud. Staff* '38.
STOELTZING, MILDRED Liberty
English German
T N T Historian '37, Treas. '38,
Red Hots, Comm. Mem. W. J. Chr.
Assoc., Panaegis, Sr. Class Sec.

FIFTH ROW

THOMASSON, THELMA
Denver, Colo.
Psychology Soc.
Panaegis, Y. W. A. Pres. '38,
Pres. Melrose Stud. Gov't., B. S. U.
Council, Glee Club, Sec. to Dean of
Women, Comm. Mem. W. J. Chr.
Assoc.
TROTTER, JOSEPH Carrollton
Physics Math.
Sigma Nu Treas. '34-'35, '35-'36,
Commander '36-'37, Pi Kappa Delta,
Diamond Key, Sigma Pi Sigma, Pres.
'36-'37, Phi Gamma Mu, Alpha Phi
Omega, Physics Assistant '36-'37, *Tat-*
Thirty-nine

NEIGER, FRED St. Louis
Greek Latin
B. S. U. Council, Pres. '38, Minis-
terial Group, Comm. Mem. W. J. Chr.
Assoc. '37-8.
NEWPORT, JOHN Buffalo
History Political Science, Econ.
Sigma Nu Treasurer, *Tatler* Staff
'36, Editor *Tatler* '37, Rhodes Scholar-
ship Candidate '36, '37, Who's Who
Among American College Students
'36-7, American College Yearbook
'37, Senator for Mo. and Iowa, Na-

Among American College Students.
'38, History Ass't., Eastern Debate
Trip '38, Outstanding Senior '38,
Honor Roll '35-6-7-8.
PHILLIPS, LEO H. Kansas City, Kans.
Pi Gamma Mu, I. R. C., Alpha
Phi Omega, Forensics.
PICKHARDT, ROLAND C.
Santa Ana, Calif.
English Greek
Ministerial group, Male Quartette,

Sigma Pi Sigma, Phi Gamma
Delta, Physics Ass't. '37-8.
SMITH, MILDRED

North Kansas City
Sociology History, Econ.
Beta Sigma Omicron, Corres. Sec.
'38, Pi Gamma Mu, Pres. '38, I. R.
C., Y. W. A., Red Hots '35-6, W. J.
Players.

SOLOMON, LYNN Lebanon
Biology Physics, Chemistry
Sigma Nu, Alpha Psi Omega,
William Jewell Players, Business Man-

SUTTON, CLARENCE
Greybull, Wyo.
Chemistry Physics
SWORD, DOROTHY Liberty
French Spanish
T. N. T. Pres. '38, Sigma Tau
Delta, Sr. Class Vice-Pres., Student
Ass't., Editor *Student* '37, Panaegis, Pan-
Hellenic Council '37-8, Student Senate
'37-8, Board of Control '37-8.

ler Staff '35-36, International Rela-
tions Club, Band, Forensics '36, '37,
'38, Who's Who Among Students
of American Colleges and Univer-
sities, Aeons.

TURNER, NELLIE MARIE Weston
History English
Y. W. A., Comm. Mem. W. J.
Chr. Assoc., Red Hots.

WHITE, ERCILE La Plata
Sociology History

WILLIAMS, CLYDE Kansas City
Psych., Eng. Educ., Span.
Kappa Alpha, Secretary '36-'37-
Continued on Page Forty

tional Student Congress, '37-8, Col-
lege Orator '38, Pres. Freshman Class
'35, Student Senate, Student Bd. of
Control, Senior Competitive Scholarship
'37-8, Diamond Key Pi Kappa
Delta, Aeons, Forensics '36-7-8, Inter-
Rel. Club, Treas. '37, Pi Gamma Mu,
V.-Pres. '37, Gamma Pi Epsilon,
Alpha Phi Omega, Basketball Letter-
man '35-6-7, "J" Club, Sec. '37, Men's
Glee Club, Football Squad '35, East-
ern Debate Tour '38, Political Science
Ass't. '37-8.

Comm. Mem. W. J. Chr. Assoc. '37-
8, B. S. U. Council '37-8, Pres. New
Ely Council '38.

RAINWATER, IVAN Bolivar
Biology Chem., Physics
I. R. C., Men's Biology Club,
Biology Ass't. '36-8, Head Waiter
New Ely Dining Hall.

SCOTT, C. J. Kansas City
English Greek

ager, Forensics, Pi Kappa Delta,
Diamond Key, Men's Biology Club,
Pi Gamma Mu, Business Manager of
'37 *Tatler*, "J" Club, Track Letterman
'35-7 Co-cap't. '38, Student Swim-
ming Instructor '37, B. S. U. Council,
Men's Glee Club, V.-Pres. of Sopho-
more Class, President of Senior Class,
Student Board of Control, Student
Senate, Aeons, Who's Who Among
Students of American Colleges and
Universities, American College Year-
book '38.

TATEISHI, MASAKO
Paia, Maui, Hawaii
English Social Science
Beta Lambda, Sec.-Treas. '38, Y.
W. A., I. R. C., Comm. Mem. W. J.
Chr. Assoc., Pi Gamma Mu, Who's
Who Among American College Stud-
ents '38, Representative at National
Youth Assembly at Oxford, Ohio,
Pres. Soph.-Sr. Coll. Girls Sunday
School Class.

'38, Pledge Master, Sigma Tau Delta,
President '37-'38, Pi Kappa Delta,
Forensics, William Jewell Players,
Committee Member W. J. Christian
Ass'n., Varsity Cheer Leader 1936,
Student Staff '36-'38, Sophomore Eng-
lish Ass't. '37, Senior English Ass't.
'38, Philosophy Ass't. '38, Who's
Who Among Students of American
Colleges and Universities '38, Editor
Sigma Tau Delta Publications '38, 10
most Outstanding Seniors, Men's
Glee Club, Instructor American Red
Cross Life Saving '36, '37, '38, Amer-
ican College Year Book '38.

THE SENIOR CLASS

The dignified seniors of the class of 1938 properly initiated the neophytes, more commonly known as the freshmen, into the traditions of William Jewell. The usual customs—the reading of the Freshman proclamation by the Senior president and the wearing of green hats by both boys and girls—were followed.

This Senior Class of '38 has been termed by many as outstanding both from the standpoint of scholarship and activity. Practically every member is in some extra-curricular activity. Scholastically the class should be highly commended for its average is 1.92. The seniors and the faculty chose the ten outstanding seniors, namely:

Constance Burkhardt

Joe Trotter
Clyde Williams
Walter Sharp
Price Philbrick
John Newport
George Hale
Paul Godfrey
Walter Bailey
Lynn Solomon

The class under the direction of Miss Virginia Rice presented a play during Commencement week. The commencement address for the Seniors was given by John B. Pew, prominent Kansas City lawyer and recently elected member to the Board of Trustees of William Jewell College.

UNPHOTOGRAPHED SENIORS

Allen, Charles	Winter Haven, Florida
Hale, George	Springfield
House, Jack	Kansas City
Moore, Gentry	Hornersville
Stillwagon, Grover	Kansas City

UNPHOTOGRAPHED SPECIAL STUDENTS

Kirchner, Russell L.	Liberty
Shoemaker, Myrtle	Kansas City
Wren, Nelle L.	Liberty

Continued from Page Thirty-nine

SIXTH ROW

WILSON, GEORGE	WYBLE, CASH	Cyrene Ministerial Group.
Kansas City, Kansas	Sociology Hist., Bible	ZUMWALT, RALPH H. Kansas City
Physics Math.	Ministerial Group	Greek Latin
Kappa Alpha, "J" Club, Pres. '38,	YOUNG, MARGARET Plattsburg	Ministerial Group
Football '35-8, Tattler Staff '37-8, Phys-	Sociology Econ., Hist.	LEWIS, JAMES Kansas City
ics Ass't. 37-8.	Y. W. A., I. R. C., Associate	Special Student



2:10 Tuesday
and Thursday

Alspaugh, Kenneth
Liberty

Armentrout, Dorothy B.
Kansas City

Backer, Mildred
Fremont, Nebr.

Banes, Kenneth
Carrollton

Bell, Myrtle
Liberty

Boner, Claude C.
Maysville

Boone, Edwin
Quincy, Ill.

Bowles, Chester Sherwood
Liberty

Bowman, Welburn
King City

Chappell, Juanita
Paola, Kansas

Butler, Loren H.
Sheridan, Wyo.

Burtch, Robert T.
Notus, Idaho

Burks, Jean Patrick
Hannibal

Brune, Ervin
Buckner

Clarke, George B.
Madison, Kansas

Clevenger, Harry A.
Missouri City

Connely, Julia Helen
Liberty

Couch, Kenneth E.
Liberty

Cravens, John Harold
Chaffee

Crockett, Josephine
Liberty

Crossett, Bernice
Excelsior Springs

Dinus, Irene B.
Ottumwa, Iowa

Elliott, Edwin P.
Clay Center, Kans.

Frink, Virginia Nelle
Liberty

Gatson, Curtis
Vandalia

Green, Nelda
Polo

Guhleman, Henry V.
Jefferson City

Hall, Frances Marie
Independence

Heaton, Anna Lois
Liberty

Hirokawa, Stanley M.
Kealakekua, Kona,
Hawaii

Howitt, Frances
King City

Jackson, Herbert Cross
Maxwell, Nebr.

Jones, Phillip M.
Sheldon

Kelly, Loyd G.
Kearney



"Sandy"	Knight, J. Vernon Osceola	Knight, J. Victor Osceola	Lowry, Dorothy Liberty	McDonald, Norman, Jr. Liberty
Main, Edgar Hugh Liberty	Means, Leroy Mosby	Merritt, James Scott Memphis, Tenn.	Miller, Billy Platte City	Miller, R. B. Weston
Moore, Woodrow H. Doniphan	Morgan, Max Downing	Page, Christine Liberty	Parrott, Dorothy Jayne Liberty	Payne, Eleanor Liberty
Pinkerton, Elizabeth Kansas City	Pumphrey, Frederic M. St. Joseph	Reed, John Wesley Kansas City	Riddell, Cyrus M. Brookfield	Rogers, Maribel Kansas City, Kans.
Rolf, Harry A. Liberty	Ross, John Aux Vasse	Rutledge, Herbert Wallace Louisiana	Sands, Marvin Earl Liberty	Seats, Lavell Kansas City
Shaw, Charles A. Missouri City	Stanley, Henry, Jr. Independence	Thompson, Mary E. Liberty	Turner, Olin Greybull, Wyo.	Vogt, Alfred Norborne
Waid, Robert Lee Pleasant Hill	Walker, Marvin E. Princeton	Weakley, Mildred G. Kearney	Weinhold, George Carrollton	Winger, Maurice Kansas City

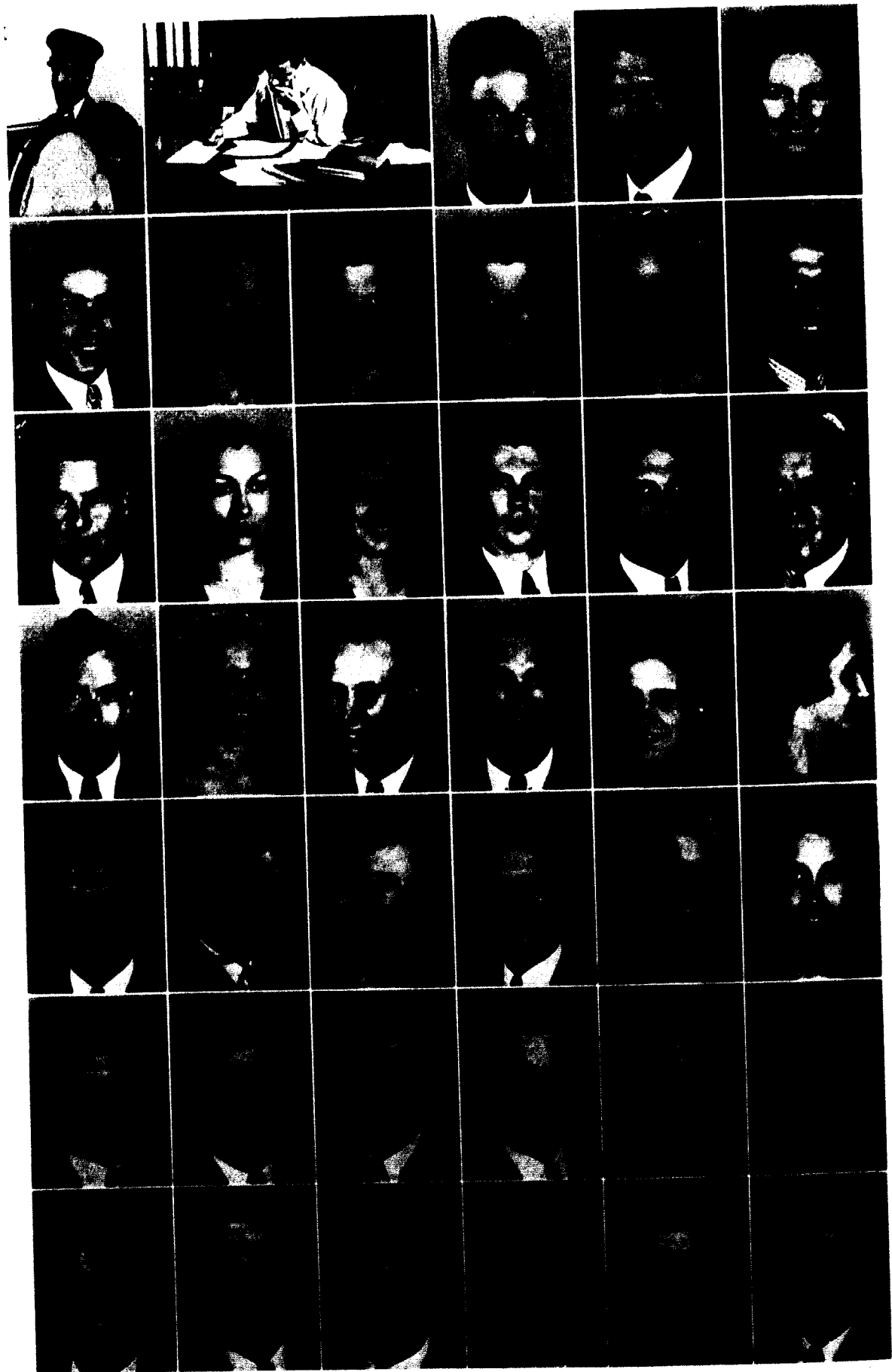
THE JUNIOR CLASS

Victor Knight	President
Anna Lois Heaton	Vice-President
Frances Howitt	Secretary-Treasurer

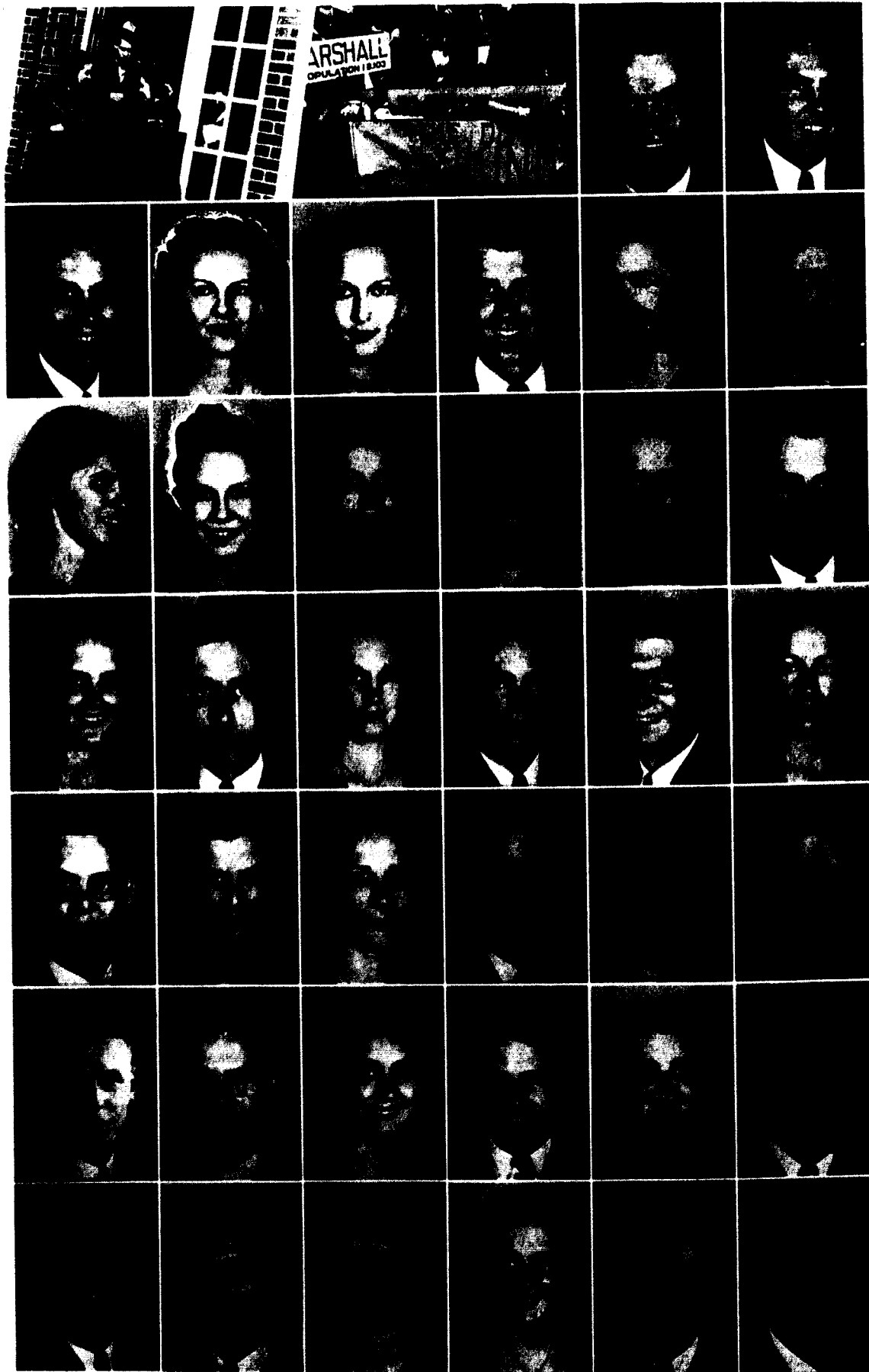
Junior class activities other than individual achievements are limited to the publications of the *Student*, of the *Annual*, the *Tattler*, and to cooperation with the Seniors in Freshman initiation.

UNPHOTOGRAPHED JUNIORS

Ashlock, Marvin	King City
Bright, Willard L.	Montevallo
Craig, William F.	Alta Vista, Kans.
Crystal, Eugene	Brookfield
Friesen, Aaron R.	Kansas City
Haines, Orville A.	Liberty
Hair, James	Ft. Collins, Colo.
Kennedy, Eva M.	Laredo
Norris, Lyman W.	Ft. Collins, Colo.
Pierce, Kenneth	St. Joseph
Rains, Fred	Kansas City
Rosecrans, Wayne	Mt. Leonard
Stewart, John H.	Gallatin
Stromberg, Rolland N.	Kansas City
Wills, Earl	Cameron



- | | | | | | |
|---------------------------------------|---|----------------------------------|--------------------------------------|------------------------------------|-------------------------------------|
| Hansell beats
it out
for Jewell | It look like
the real thing—
could it be? | Arnote, Wendell
Polo | Anderson, Lewis
Mountain Grove | Aubuchon, Wilma
Kirkwood | |
| Baber, Jones
Plattsburg | Bailiff, Josetta
Dexter | Bales, Doris
Kansas City | Barnette, Marie
Lexington | Bell, Ann Margaret
Liberty | Blanchard, Frank
Warsaw |
| Brady, James
Orrick | Brandom, Patty Lee
Liberty | Brewer, Maxine
Liberty | Brockhouse, Richard
Kansas City | Burch, William
Kansas City | Campbell, James
Wichita, Kans. |
| Caneer, Lon
Senath | Carter, Gail Lois
Liberty | Cormack, Everett
Liberty | Crouch, A. J.
Turney | Davis, Nan Elizabeth
Liberty | Deisher, Bonnell
Odessa |
| Dinwiddie, James
Eugene | Edmund, John
Fairbury, Nebr. | Faris, Barbara
Caruthersville | Farris, Fred
Faucett | Fowler, Virginia
Lawson | George, Lorene
Excelsior Springs |
| Goss, Elmer
St. Joseph | Gover, Ellis
Warsaw | Hansell, Robert
Kansas City | Harris, James
Needham, Mass. | Henson, Ruth
Liberty | Hessell, Virginia
Liberty |
| Hill, Massey
Maplewood | Hoel, Robert
Excelsior Springs | Hollmann, Eugene
Liberty | Huff, Warren
Overland Park, Kans. | Hulings, Marjorie
Horton, Kans. | Hunker, Carl
Carson City, Colo. |



Chapel's out

We pay respect to
the dead Viking.

Jewell, Walter O., Jr.
Denver, Colo.

Kelly, Robert W.
Kearney

Kendricks, Milton Knob Noster
Kleppinger, Geraldine Pleasanton, Kan.
Lancaster, Edith Liberty
Larsen, Henry Holden
Lewis, Ruth Independence
McCampbell, Helen L. Raytown

Mallett, Joyce Independence
Manring, Geraldine McFall
Mantz, Kathleen Audubon, Iowa
Martensen, Marie Kansas City
Medling, Mary Anne Jefferson City
Meinershagen, Hyman Levasy

Middleton, Marnie Liberty
Morf, Robert Fredericksburg, Ia.
Morris, Syrena Kansas City
Morrow, Allen Liberty
Mosby, James L. Liberty
Pixlee, Virginia Liberty

Ralls, Gerald St. Louis
Rand, Mary Frances Liberty
Richardson, Jane Kansas City
Roberts, Joseph Needham, Mass.
Sears, Stockwell Liberty
Sevier, Roberta Ann Liberty

Smith, H. Arnold Jenkintown, Pa.
Sprague, Doyle Borger, Texas
Tabb, Martha Sonora, Ky.
Taylor, Arden Eldon
Taylor, Katherine Chillicothe
Thorne, Wiley Mountain Grove

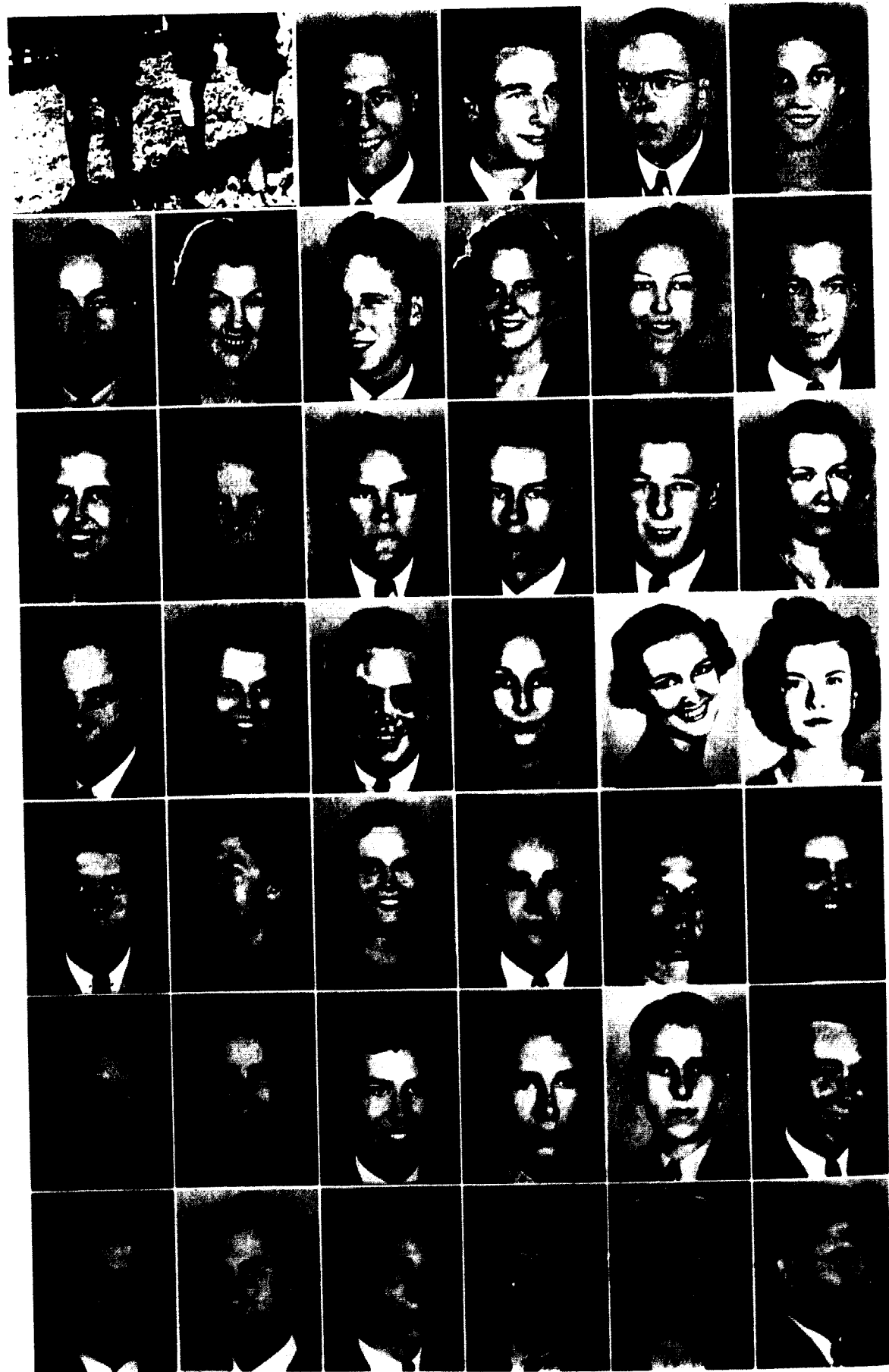
Trimble, Dawson Liberty
Tucker, John Liberty
Underhill, Betty Lynn, Mass.
Winn, Mary Jane North Kansas City
Wyant, Will North Kansas City
Yates, Ronald Liberty

THE SOPHOMORE CLASS

Harold Sheerer	President
Bobby Ann Sevier	Vice-President
Bonnell Deisher	Secretary

UNPHOTOGRAPHED SOPHOMORES

Allen, Melvin E.	Liberty
Boman, James	Kansas City
Brant, Ralph	Liberty
Canning, Ross	Liberty
Farris, Donald	Kansas City
Jones, Dorothy	St. Louis
Kirchener, Opal	Cameron
Moore, Robert D.	Carrollton
Nelson, Stanley	Kansas City, Kans.
Newman, Charles	Denver, Colo.
Olsen, Paul	Kansas City
Peters, Anne	Liberty
Rolston, Georgia	St. Louis
Scruggs, Thomas M.	La Jolla, Calif.
Shanklin, Richard C.	Bethel, Kans.
Sheerer, Harold W.	Cedar Falls, Ia.
Sprague, Albert N.	Borger, Tex.
Tripp, Ann Elizabeth	St. Joseph
Van Trump, William	Liberty
Zinn, Alma	Mosby



These two have more conservative hose

Adams, Glenn Garber, Okla
Amick, Eugene Kansas City
Anderson, Kenneth Riverton, Wyo.
Anderson, Mildred Armstrong

Barnes, Jack North Kansas City
Berndt, Sara Stanberry
Bowles, Renile Liberty
Broaddus, Margaret Webster Groves
Brown, Betty Liberty
Brown, George Hannibal

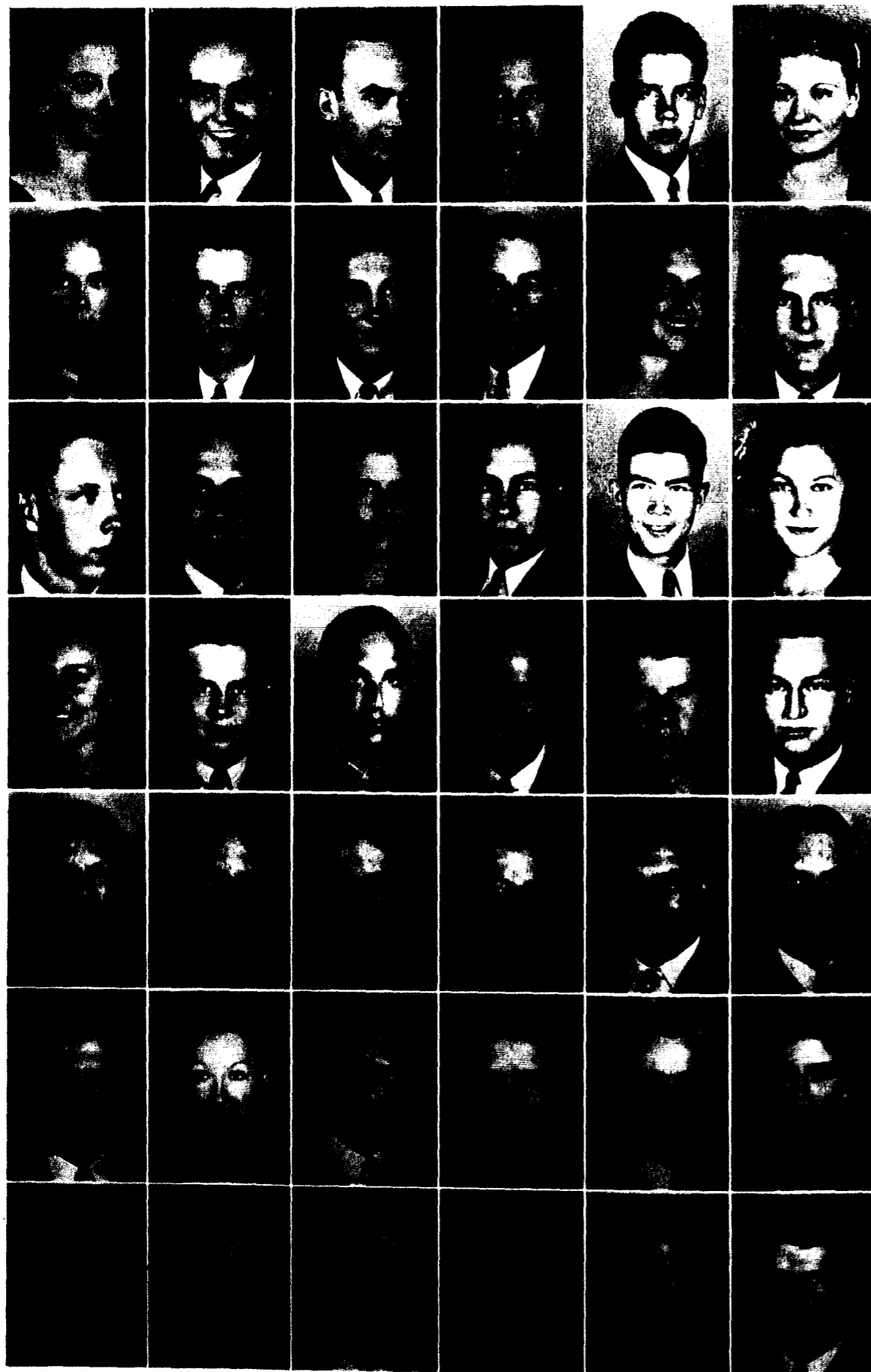
Bryant, Virginia Liberty
Burkhardt, Bessie Liberty
Burnley, J. C. Buckner
Cary, Jimmy Savannah
Clatworthy, Edwin Harrisonville
Clemings, Virginia Platte City

Cochrane, Richard North Kansas City
Collins, Dorothy Liberty
Connely, William Liberty
Cook, Virginia Independence
DeWeese, Dorothy Kansas City
Divina, Ellen Weston

Dopp, I. F. Craig
Downing, Beebs Liberty
Draper, Ruth St. Louis
Durdin, Tom Omaha, Neb.
Eames, C. Moseley Tsining, Shantung, China
Ellis, Betty Moorestown, N. J.

Evans, Jewell C. Gower
Garret, Norma Mexico
Gillis, Isaac Rushville
Gladstone, William Worth
Glaser, John Webster Groves
Goodson, Charles Macon

Goss, Carl St Joseph
Gragg, Ben Liberty
Haldeman, Earl Walker, Minn.
Hall, Carl Pleasanton, Kans.
Helm, Marjorie Overland Park, Kans.
Hill, Richard Horton, Kans.



Hilton, Katherine Hardin Houser, Gale Liberty Houser, Glenn Liberty Hufft, Mary Ann Liberty Hufft, Robert Liberty Jeffries, Opal Marie Chaffee

John, Maurice Sweet Springs Killam, Robert Chicago, Ill. Kirkland, Vance Liberty Lug, I. John Hickman Mills Laughlin, Betty Liberty Lincoln, William K. Liberty

Linville, William Polo Linville, John Polo Livingston, Beverly Mexico Lukens, David H. Moorestown, N. J. Lynch, Dudley S. Carrollton Lynn, Margaret Ruth Excelsior Springs

McEwan, Theresa Liberty Macy, James W. Gallatin Major, F. Lee Webster Groves Malcolm, Robert B. Gashland Maltby, Marens Liberty Marshall, Donald Carrollton

Mattes, Mildred Kirkwood Merritt, Harold E. St. Joseph Middleton, Margaret Liberty Middleton, Wilbur Adrian Miller, George Liberty Miller, James F. Dolores, Colo.

Moore, Eugene Kansas City Moore, Katrine Liberty Moyer, Bankhead Liberty Neely, Anna Louise Liberty Odell, Robert Centralia, Okla. Parrott, Madeline Rapid City, S. Dak.

Petty, Marjorie Jean Liberty Pound, Rosemary St. Louis Quick, Dick Hardin Rainwater, Wendell Bolivar Ramires, Lewis Borger, Texas Rendlen, Charles E. Hannibal



- | | | | | |
|--|-------------------------------------|------------------------------------|---------------------------------------|-----------------------------------|
| Henrietta with
a smile | Robb, Barbara
Liberty | Robb, Louis
Liberty | Robinson, Doryce
North Kansas City | Ronk, Maxin
Kirkwood |
| Ross, Claudine
Kansas City | Rutledge, Majorie
Louisiana, Mo. | St. John, Martha
Nashua | Sadler, Henrietta
Liberty | Schaefer, Charles
St. Louis |
| Sharp, Richard
Liberty | Shepherd, Roy
Plattsburg | Shoemaker, Lawrence
Coffey, Mo. | Simmons, Frank
Liberty | Singleton, La Verne
Liberty |
| Smith, Jay B.
Valley Center, Kans. | Smith, Leslie
Kidder | Stollings, Ruth
Chandler | Strickler, Charles
Craig | Summers, Buster
Kearney |
| Summers, Katherine
Fort Smith, Ark. | Taake, Roberta
Webster Groves | Thompson, William
Liberty | Tomory, Ernest
Detroit, Mich. | Trowbridge, Helen
St. Louis |
| Turpin, William
Liberty | Vaughn, Melva Deane
Liberty | Waid, James
Pleasant Hill | Wallick, Harold
Lebanon | Westbrook, Wellington
Marshall |
| Williams, Robert
Kansas City | Williams, Ralph
Kansas City | Wiltshire, Jean
Liberty | Witthaus, Martha
Liberty | Woods, Arch
Independence |

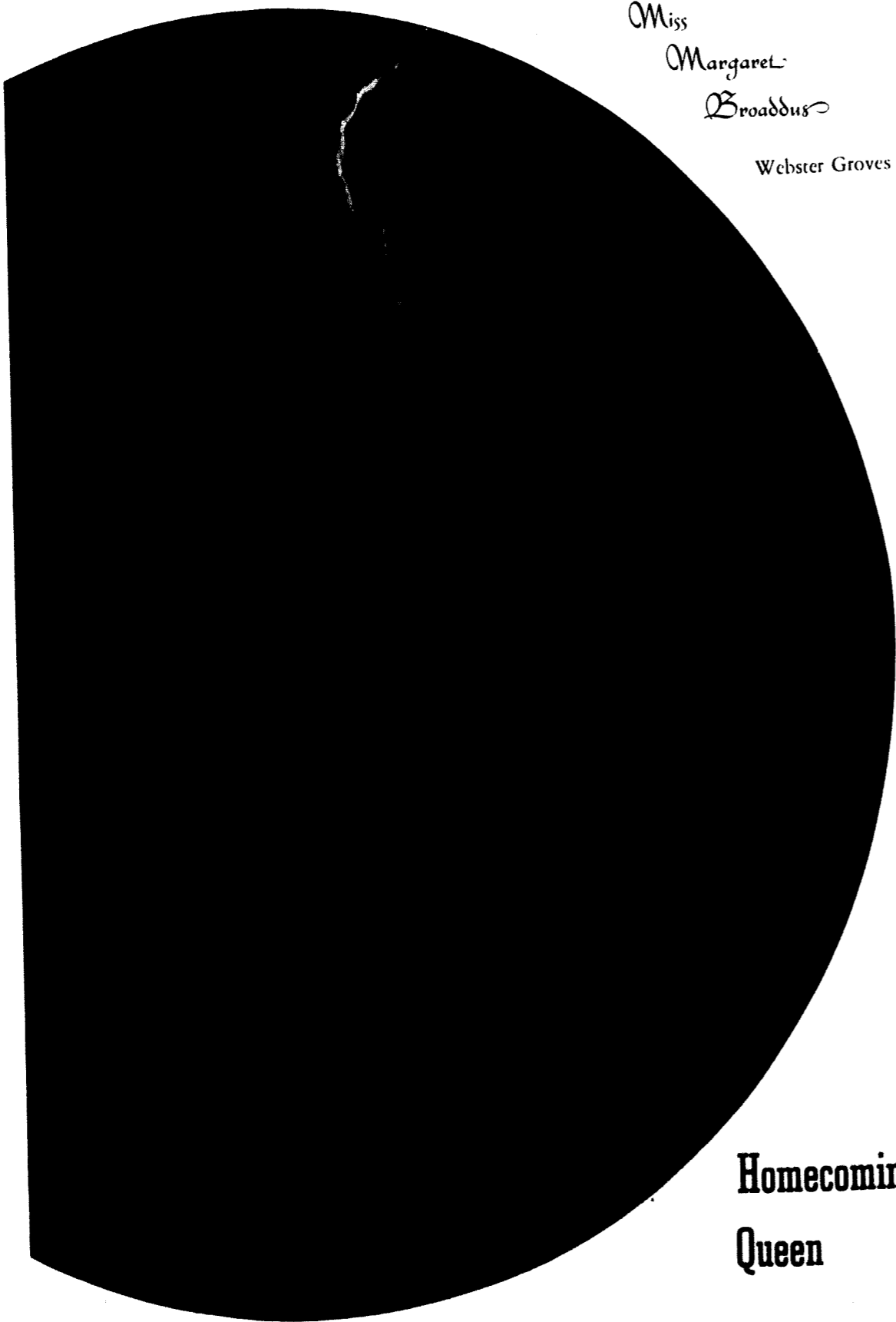
THE FRESHMAN CLASS

Eugene Amick	President
Renile Bowles	Vice-President
Rosemary Pound	Secretary

UNPHOTOGRAPHED FRESHMEN

Adams, Richard	Kingston
Baker, Charles W.	Blue Springs
Barnes, Eugene	Kansas City
Barnes, Roy E.	North Kansas City
Boisen, Averill	Upland, Nebr.
Bratton, Francis	Liberty
Calhoun, Joseph	Louisiana
Cantlon, Rayburn	Liberty
Carter, Graham W., Jr.	Liberty
Clevenger, John Jewell	Excelsior Springs
Cockrell, Tom	Kansas City
Coleman, Hubert	Shawnee, Okla.
Crawford, Harvey	Salisbury
Croy, Vernon	Liberty
Cummings, James B.	Liberty
Davies, William	Kansas City
Davis, Kenneth	Independence
Drenon, Russell	Warsaw
Durden, Kenneth	Omaha, Nebr.
Ferrill, David	Waverly
Footte, David W.	Osaka, Japan
Holland, Robert	Denver, Colo.
Johnson, Arthur W.	Beeler, Kans.
Leeper, Harry	Excelsior Springs
Loomis, John	Honolulu, Hawaii
Marks, Marvin	St. Louis
Morris, Wilbur	Princeton
Norcross, John	Liberty
Oliver, Laurence	Mount Ayr, Ia.
Osborne, Elmer Vernon	St. Louis
Ragan, James	Ridgeway
Richardson, I. F.	Nevada
Roberts, Bland	Louisiana
Shanklin, Mrs. Eileen	Bethel, Kans.
Simrall, Joe	Liberty
Smith, S. Eugene	Fairport, New York
Unger, Orville T.	Liberty
Van Dyke, Elmer	Kansas City, Kans.
Vaughn, C. David	Liberty
Vickery, Charles Eugene	Marion, Ill.
Walters, Paul	Lamar





Miss
Margaret
Broaddus
Webster Groves

Homecoming
Queen



New Ely—2nd
"Hot Dogs"

A word from the Queen, next
Beta Sig—3rd

Yea Jewell!

Fiji float takes
First Place

Homecoming



R. E. "Dad" Bowles
Athletic Director



"Coach" Godfriaux
Football and Basketball

FOOTBALL

Jewell Wins First M.C. A. U. Championship in 16 Years

With the innovation of a new brand of football that approaches the "razzle dazzle" type of play by our new football coach, Henri Godfriaux, William Jewell won its first Missouri College Athletic Union Championship in sixteen years after tying for the championship last year. Although there was only a small turnout at the first of the season from which to select a squad there was a solid nucleus of twelve returning lettermen including Co-captains Bud Brant and Bob Bowles. At times there were not enough players to have an efficient scrimmage. Sometimes Coach became a little disappointed but he stuck by the boys and the boys stuck by him in the development of this new type of football. Soon the fever of a championship football team began to spread and permeate the every thought of the student body and the townspeople. Each afternoon practice brought more and more faithful followers.

The fever reached its peak when the squad pulled out to measure their forces against the Washington University team of St. Louis. These "big time" measurements were hard to meet and the Cardinals were smothered by the intense heat of a late summer day and a 15-0 score. The boys got a taste of what the bigger teams can do. It was a good class in football. Vic Knight, Walt Sharp, and Butch Sheerer had their share of tackles on the big boys. We all can still hear the dull thud of the crash when Elmer Goss and Jack Martin "cooled" big Shafkolsky of the Washington team. Then came the wet and muddy night game with Rockhurst. The "Irish" proved too aggressive for the Cardinals by a 13-0 score. The seniors bade goodbye to their last chance to gain that first victory over the Rockhurst gridders. These two defeats brought the team home for its first home game. This game saw some missed tackles donate one touchdown to the Ottawa Braves which proved to be the margin of a 21-14 victory. With three defeats against no wins the Cardinals traveled to Marshall to make their conference debut against Missouri Valley in a glorious

7-6 victory in a game that was thrill packed from beginning to end. This game brought out the football that had been inert in the Cardinals for three games. With Wilson plunging through the line and McDonald skirting the ends Jewell scored the first touchdown and added the extra point with a surprise pass from McDonald to House. With high hopes the Big Red Team journeyed to Tarkio to test their wares against the big Tarks. Jewell kept the Tarks with their backs on the goal line all during the game but couldn't score and at the same time keeping the Tarks away from their goal line. "Butch" saved the day on a greased lightning tackle while McDonald gave a beautiful exhibition of punting. Coming home for homecoming day the Baker team marred the day by blocking a kick and scoring a 6-0 victory. Entering its third conference game Jewell came out with a 21-14 victory over Culver-Stockton. We won't forget the touchdown play of Bob Bowles that was called back or the sparkling play of Don Farris at end. Then came the big game of the year that found Jewell having its own way on the field by a 21-7 score over Central. Again the ball lugging of Wilson and McDonald played important roles.

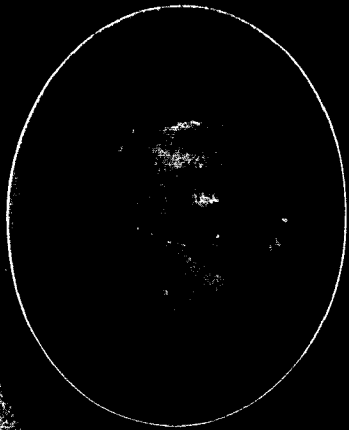
With three wins, one tie, and no defeats against Tarkio's two wins, one tie, and no defeats, William Jewell claimed the 1938 M. C. A. U. football championship.

Newspaper men selected Captain-elect Victor Knight, Elmer Goss, Butch Sheerer, and Norman McDonald on the All-Star conference team.

The 1937 squad is as follows: Hap Blanchard, Edwin Clatworthy, Jack House, Bob Bowles, Bud Brant, Bob Moore, John Norcross, Harold Merritt, Red Middleton, Elmer Goss, Dick Quick, Don Farris, Carl Goss, George Wilson, Ralph Williams, Henry Stanley, Norman McDonald, Pete Oliver, Chester Bowles, Victor Knight, Henry Miller, Bland Roberts, Jack Martin, Walt Sharp, Harold Sheerer, and Bob Williams.



CARDS PLAY HERE



RUD BRANT H.B.

WALT SHARP C.

VICTOR KNIGHT G.

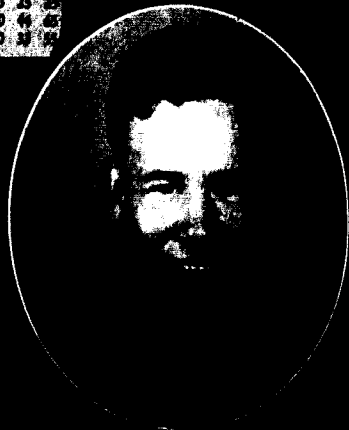
CARDINALS WIN M.C.A.U. CHAMPIONSHIP

Jewell Notes Out Tarkio By 52 Percent

M.C.U. Final Standings

Team	W	L	T	Points	Percentage
Jewell	3	0	1	875	40.20
Starkton	2	0	1	830	42.20
Starkton	1	2	0	333	25.20
Valley	1	3	0	290	49.60
Starkton	1	3	0	250	37.20

TRICE IF JEWELL SHOW MAKE-ALL COMPLETED



Shawyer, Goss, and McDonald chosen for Journal-Post's Mythical Eleven
EIGHT CARDINALS ARE HONORED



Cardinals Triumph Over Valley 7-6

Early Burst of Speed and Superior Defense win First MCAU Victory



THREE-DAY HOMECOMING TO A CLIMAX SATURDAY

JEWELL BEATS TARKIO TO KEEP BASE

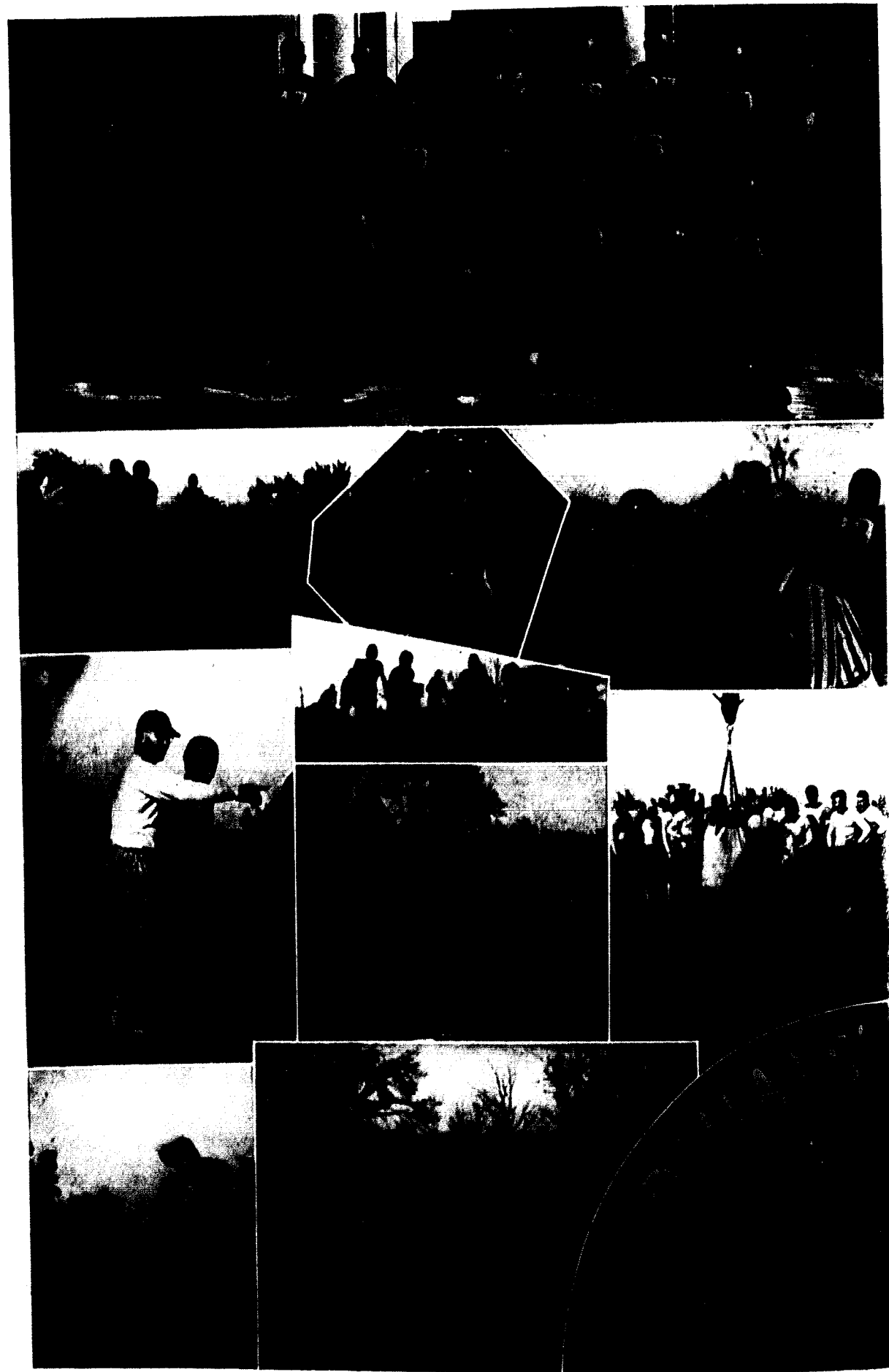
FOOTBALL SCHEDULE

Date	Game	Location
Oct. 15	Ottawa U.	Games at Home
Nov. 6	Baker U.	Games at Home
Nov. 12	Culver-Starkton	Games at Home
Oct. 2	Washington U.	Games Away
Oct. 8	St. Louis	Games Away
Oct. 8	Rockhurst at Kansas City	Games Away
Oct. 22	Missouri Valley at Marshall	Games Away
Oct. 30	Tarkio at Tarkio	Games at Home
Nov. 28	Central at Fayette	Games at Home

MARGARET BROADBENT IS HOMECOMING QUEEN
Popular Freshman from St. Louis
Was crowned Queen at Saturday's Homecoming
FLOJS WIN FIRST PRIZE FOR FLOAT
New Year's parade and Date Show
Ottawa Win 2-1 and 3rd Prize



... ADVANTAGE ...



"J" CLUB



Left to Right: First Row: Wilson, Burtch, E. Goss, Means, D. Farris, Morales, Solomon, Stoeltzing, Moore; Second Row: Sheerer, Blanchard, C. Bowles, Knight, John, F. Ferris, Norcross, C. Goss, McDonald, Quick, House, Rameris; Third Row: "Dad" Bowles, Martin, Newport, Westbrook, Roberts, R. Bowles, Bruner, Coach Godfriaux.

The "J" Club received its first impetus about 1912. William Jewell athletes earned and received their athletic awards before then but it was not until 1912 that they decided to form an organization with some purposes and functions common to them, athletics, and the college. Since that time more than twelve hundred athletes have registered their names in the "J" Club. A strong organization of these alumni has been formed of which Mr. L. A. House is president.

During recent years the activities of the club and the interest manifested by its members have dropped considerably. Under the careful instruction of Coach Godfriaux the club has completely reorganized, forming a new Constitution and set of by-laws. This Constitution was formulated by Coach Godfriaux and George Wilson, assisted by Victor Knight, Elmer Goss, and Norman McDonald, Jr.

The main activities of the club are: assisting "Dad" Bowles in high school track meets, sponsoring football and track broadcasts, and in general helping the coaches and the athletic board in any athletic endeavor.

The following is the preamble to the Constitution of the "J" Club:

"Whereas, in order to form a more perfect union of lettermen, we, the duly lettered athletes of William Jewell College, do hereby ordain and establish this club that the high ideals and traditions of William Jewell College athletics be preserved to the posterity of William Jewell College."

OFFICERS

George Wilson	President
Elmer Goss	Vice-President
Jack House	Secretary
Harold Sheerer	Treasurer

BASKETBALL

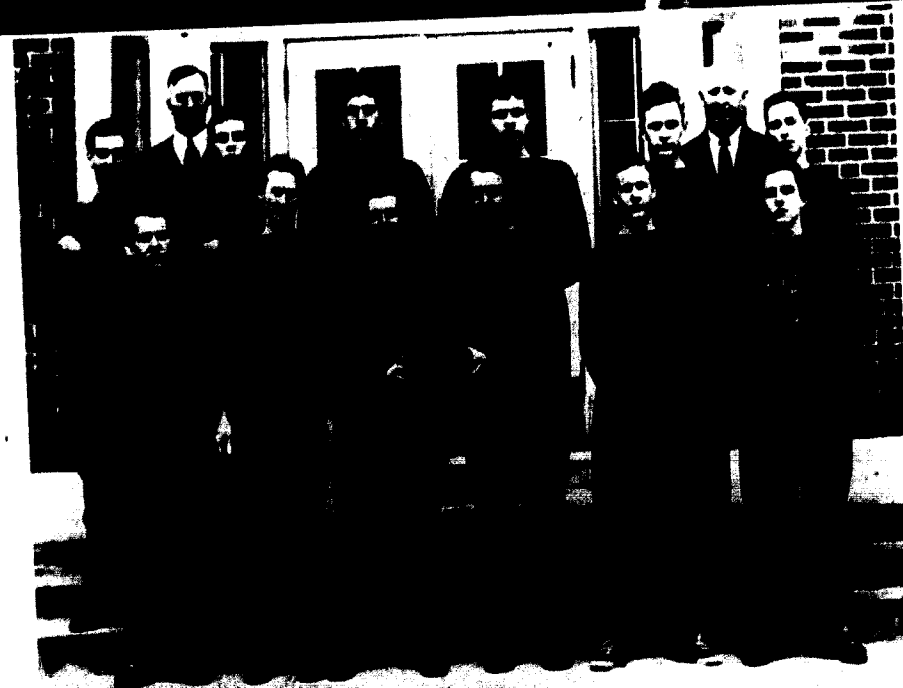
There always has been an athletic tradition built in the athletes of William Jewell that is characterized by the "never die" spirit. Though the odds have been against Jewell basketball for quite a number of years our little short boys have always fought the big tall boys to the last ounce of energy. There was a day when "Dad" and the boys thought of basketball championships and never in vain. In recent years Jewell has not had their share of the tall boys; consequently, Jewell basketball has been under par. This year the prospects of a very successful season arose on the basketball horizon with an influx of some very promising freshman boys. Bland Roberts, Maurice John, and Wellington Westbrook looked like they were going to be the material Jewell needed. Big six foot six inch George Hale added more strength to the team. The sophomore lad we all considered as the best scrapper and best guard in the conference, Don Farris, furnished the spark. One of the best competitors in Jewell sports this year and a boy whose natural eye for the basket was always useful began to sharpen his shooter. This boy was Captain Jack House. Then Coach Godfriaux had such good players as Fred Ferris, Al Vogt, Bob Bowles, A. J. Crouch, and Hap Blanchard. Naturally, hopes were high for a great basketball season. The schedule had been made, Coach had drilled them in the fundamentals, and had given them their plays. The next object in the team play was the execution of a combination of these trainings against other teams.

The first of these tests was made against the Cleveland Chiropractors of the Kansas City Naismeth League. Coach Godfriaux used these two games to find out what he had and how it would turn out under fire. He tried many combinations but at the same time losing these two games to the Chiro. Then the Cardinals made their first road trip and also their innovation into the conference. The first two games proved to be very inspiring as

Jewell defeated Culver-Stockton 45-32. In the game at Canton Don Farris was high point man with eleven points while House and Hale had ten each. Again the next night House went on a scoring spree gathering sixteen points while Roberts gathered six field baskets to give Central the worst defeat they have ever suffered on their own court. The next game Jewell continued holding first place by defeating Central for the second time by a score of 24-13. House continued his high point making with John, Farris, and Roberts doing good work. The next game found Jewell taking its first conference defeat at the hands of Culver-Stockton by a 29-27 score which found Culver-Stockton putting on last half rally in a very close game. Taking advantage of a respite in the conference schedule the Cardinals split a home and home game series with Rockhurst by scores of 30-34 and 36-25.

After this series of games the Cardinals played the most thrilling games of their schedule in defeating Missouri Valley on the Viking court in three overtime periods by a 45-41 score after the Jewell team had previously defeated the Valley quintet in an overtime period by a 35-30 score. These games proved to be the climax of the Jewell season. In the game with Valley at Marshall Bob Bowles fired the winning basket while George Hale scored twenty-two points. Jewell's standing now read five games won and one game lost. But that was the last winning game of Jewell for the season. Thereafter the boys lost two games each to Drury, Westminster, and Tokio. These games left Jewell in the lower half in the final standing of the conference.

For their outstanding play during the season Captain Jack House, Don Farris, and George Hale should be commended. We all expect greater basketball out of Wellington Westbrook, Bland Roberts, Hap Blanchard, Fred Ferris, and Maurice John.



A
minute
to go—
Rockhurst
struggles
for
lead

SQUAD

Second Row

Drennon
"Coach"
John
Roberts
Hale
Bowles, Bob
"Dad"
Crouch

First row

Taylor
Ferris, F.
House
Gover
Farris, D.
Blanchard

It's a bucket!

Roberts in action

BASKETBALL

CHATTER

Inspired by a successful football season the William Jewell Cardinals look forward to an equally successful basketball season. With four returning players and a new coach, the team will make a strong showing in the conference.



FAST BREAKING TARKIO QUINTET DOWNES CARDS

Jewell Fails to Suppress Early Drive of the Visitors and Loses 41-35

JEWELL TAKES TWO ON FIRST M.C.A.U. TRIP

Culver-Stockton and Central Fall Before Cardinal Powerhouse

LEAD IN CONFERENCE STANDING

Jewell and Roberts Star as Rejuvenated Cardinals Pull High Scores in League

Player	G	FT	FT%
Powers, f	0	2	0
Wood, f	0	0	0
Toman, f	1	0	0
Schepark'yr, f	2	3	1
Buchholz, c	0	0	0
Edmonston, c	0	0	0
Richard, c	0	0	0
Smith, c	0	0	0
Trumbull, c	0	0	0
Totals	JEWELL-24	8	7

JEWELL SQUAD DIVIDES ROCKHURST SERIES

Cards Take Drubbing in K. C. But Rise to Down Hawks On Home Court



CARDS SPLIT TWIN BILL IN M.C.A.U. HOME GAMES

Jewell Continues Winning Streak over Central but is Downed by Culver Quintet

FIRST PLACE IN CONFERENCE

Jewell Stays on Top With .750 Average While Culver Pulls into Second Place Returning from a victorious road

Tense Overtime Drive Defeats Valley Twice

Cards go to Overtime Tue. and Three Extra Periods Bring Victory Fri. at Marshall

HIGH IN CONFERENCE STANDING

With One Defeat in the Great Jewell Now Has Average of .667 in M.C.A.U.

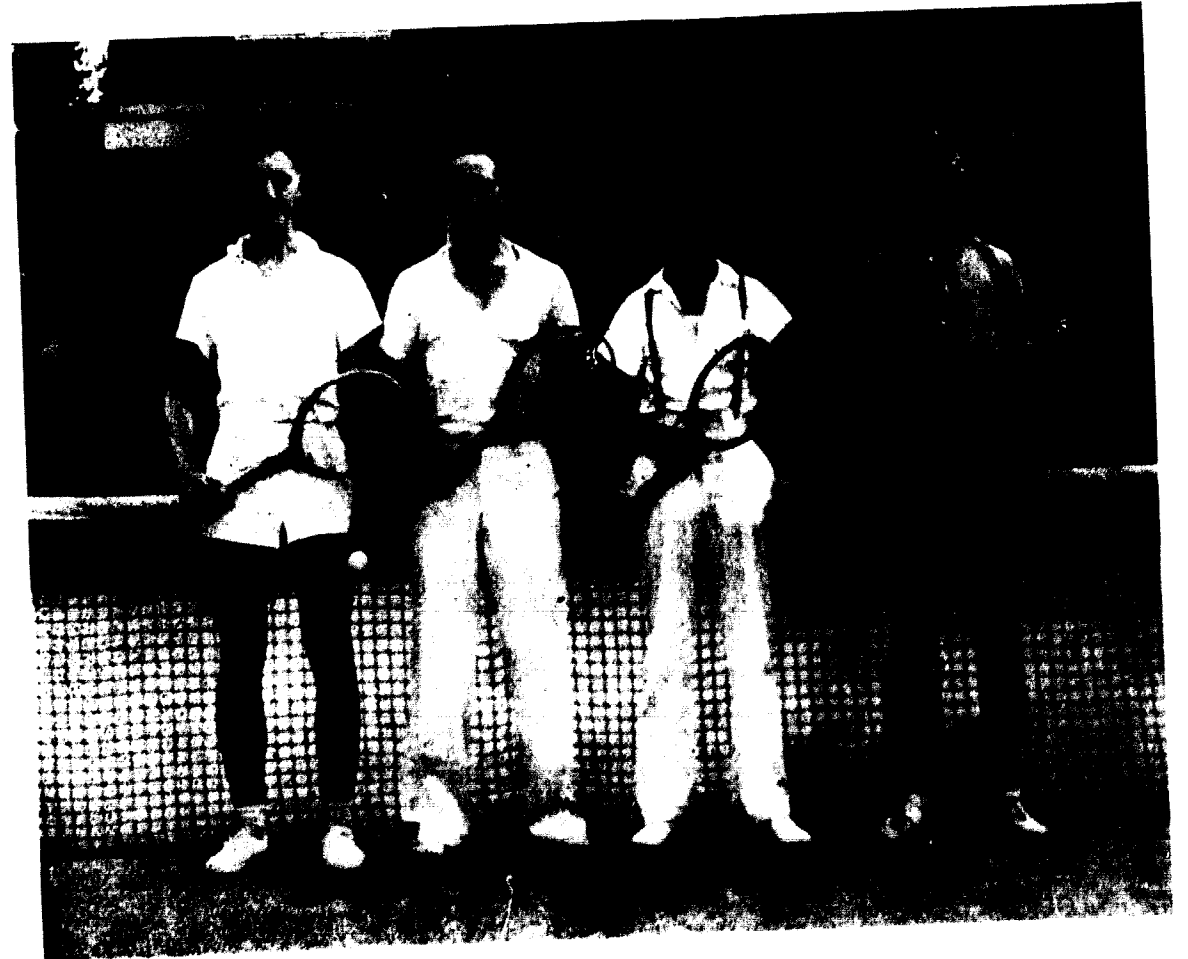


TENNIS

Last year's tennis squad proved to be just about the strongest tennis squad in the Missouri College Union. With Ed Monroe continuing his brilliant career as a singles player, he captured the singles cup in the State Meet for the third consecutive time. Monroe and W. R. Marquette teamed for an entry in the doubles matches but, after winning the doubles title the year before, dropped out after many tiring and grueling matches in the semi-finals. William Jewell has produced many tennis championships in the last twenty years as well as many exceptional tennis players. Jewell varsity tennis men have won four state championships and two second places in the last three years. The tennis squad has done its share of keeping the record that Jewell possesses of having won more athletic championships

than any other college in Missouri. The 1936 squad consisted of Captain Ed Monroe, W. R. Marquette, Estil Bruner, and Fred T. Renshaw. With all but one of this squad gone from school, the one man, Captain Estil Bruner, with Coach R. E. Bowles must build the 1938 squad to meet the standards set by the tennis squads of the past. Bruner is the man around which the team this year is to be built. The ratings of the squad so far this year from the number one position down are Estil Bruner, Lyman Norris, Milton Morales, George Brown, Arch Woods, Conley Scott, and Glenwood Aubuchon. The challengers of the lower ratings can shift this line-up. With tennis always of championship calibre we can expect the same from this 1938 squad in the State Meet at Fulton on May 13 and 14.

1938 TENNIS SQUAD



Bruner

Norris

Scott

Brown

TRACK

Memories flash back to the loss of the State track meet title by a scanty one-half point to Tarkio in the 1936 meet but we instantly cherish the great championship the boys brought home from Fulton last spring. With the old stand-by point getters, Captains Frank Chrane and Coulter Cunningham, stealing the show the Cardinals came back with the wide margin of 53 points to second place Tarkio's 45. The Jewell 880 yd. relay performed in record-breaking style, Martin took first in high jump and second in the javelin, Chrane took first in the 100 yd. and 220 yd. dashes while Cunningham took first in 440 yd. run, and Solomon gaining points in the hurdle races, with Elmer Goss, Bob Bowles, and Milton Morales taking points in the field events. Other members of the championship squad are Norman McDonald, Bob Moore, Ernie Stoeltzing, Bob Burtch, Tom Henry, LeRoy Means, Clark Whistler, Don Farris, and George Clark.

This year the largest track squad in many years turned out for practices. "Dad" Bowles has many fine prospects in view to

defend the championship but the beautiful races of Cunningham and Chrane will be missed by the spectators as well as "Dad". Around their new Freshman field stars, Bland Roberts throwing the shot, the discus, and running the dashes, and John Norcross throwing the javelin, the Cardinals hope to pick up State meet points that they may lose in the races. With Martin, Morales, Maurice John, and Elmer Goss aiding in the field events and Don Farris, Solomon, LeRoy Means, Norman McDonald, George Clark, Bob Burtch, and Louis Rameris rounding out the running events, "Dad" hopes to build another championship track team. Don Farris' running of the hurdles has been showing very well.

In a pre-season tune-up meet the Cardinals defeated the Marysville State Teachers track team by a score of 69-67. It was a close meet with the margin of victory lying in the field events. The students and spectators are expecting great things out of the new freshman and sophomore stars. Here's hoping Co-captains Jack Martin and Lynn Solomon guide the team home with the "bacon".



Morales, at six feet
The '38 squad
The mighty Goss

Clarke in a finish
Perfect form, by Captain Solomon

Captain Martin heaves
"Jo-Jo" Means
Roberts starts a wind-up

Organizations



It's a hit!
A persistent objector to activity
Woods serves

The girls lend a helping hand at the meet
Spring football
Norris—pitcher for the champions

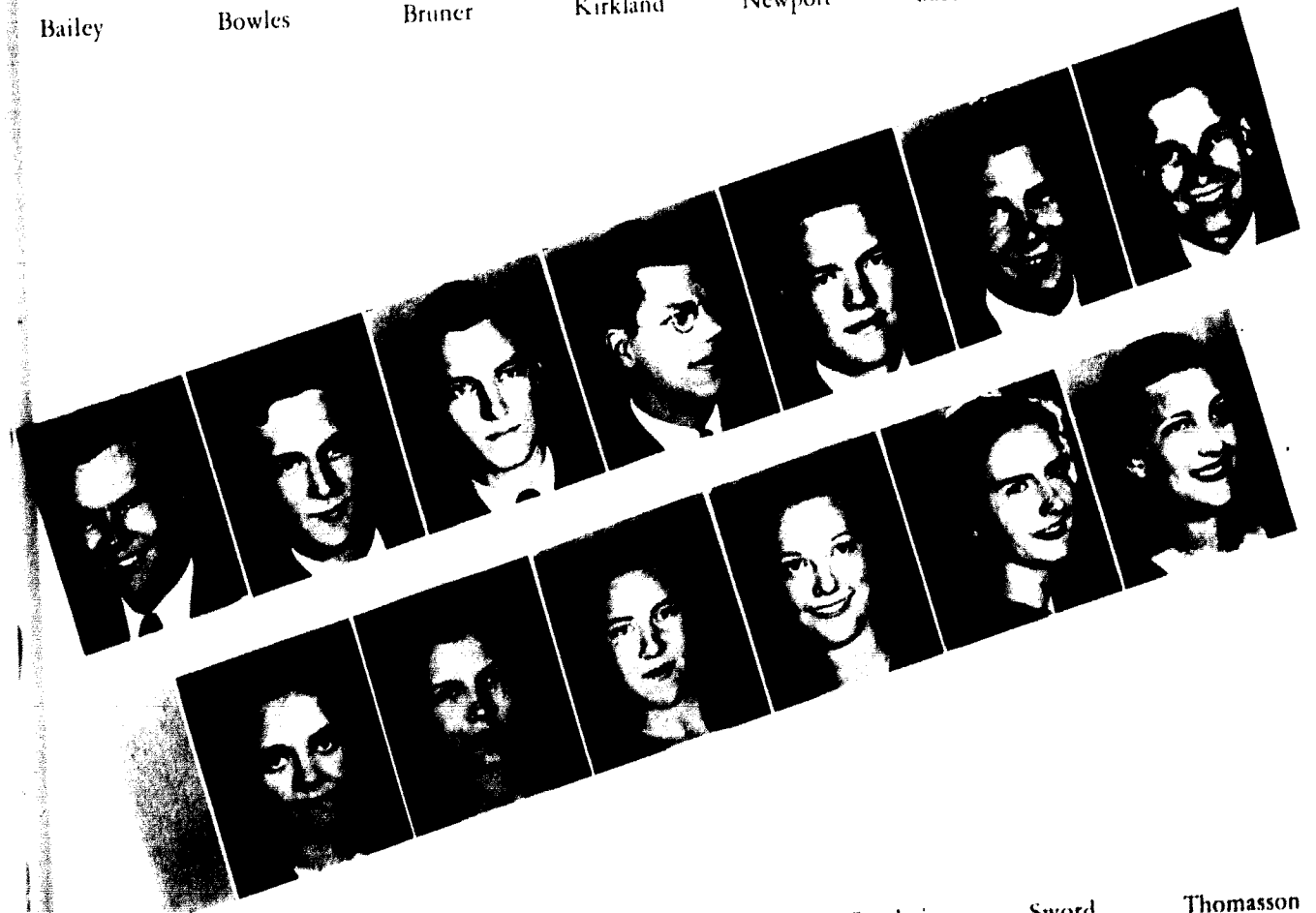
Since the organizations and activities on the campus are so numerous and varied, the editor has had great difficulty in presenting them in a logical manner. However they have been arranged, in so far as possible, in an alphabetical order both as to function or purpose and as to title. They are arranged under three sub-titles: Honorary, Religious and Musical, and Social. Any deviation from alphabetical arrangement of titles is due to grouping of similar organizations.

A E O N S

Since 1906 Aeons has been recognized as an honorary society for senior men of William Jewell. While the members seek "to further the interests of William Jewell College", their activities are secret and they desire no reward, praise or recognition. The members are chosen from the junior class and number from five to eight.

The only social activity of Panaegis and Aeons is a breakfast given after each organization has tapped its new members. At this function all former members of both groups are invited and the following year's plans are discussed.

Bailey Bowles Bruner Kirkland Newport Solomon Trotter



Arthur Burkhardt Cederburg Stoeltzing Sword Thomasson

PANAEGIS

Each spring, from five to seven junior girls are selected to wear the gold shield of Panaegis. This organization, similar to Aeons, is the honorary society for senior girls in William Jewell. It was founded in 1928 and has existed "to serve the best interests of women in William Jewell College". Virginia D. Rice, Ruth Lindsey, and P. Caspar Harvey are advisors.

ALPHA PHI OMEGA



- Aubuchon
- Banes
- Dunlop
- Edmund
- Hall
- Hansell
- Jewell
- Jones
- Killam
- Kirkland
- Majors
- Merritt
- Newport
- Reed
- Rendlen
- Ralls
- Trimble
- Trotter
- Turpin
- Wyant

OFFICERS

- President Ralph Dunlop
- Vice-President Walter Jewell
- Secretary Will Wyant
- Treasurer John Edmund
- Corresponding Secretary Robert Hansell
- Scouting Advisor Judge E. E. Kirkland

Alpha Phi Omega is a national service fraternity which helps college men to develop a fellowship. Founded in 1925 at Lafayette College, Easton, Pennsylvania, the fraternity now has sixty chapters. Alpha Mu chapter was formed from a local society organized in 1931. The service program is recognized everywhere. It sponsors the intramural basketball league, awards a cup to the victorious fraternity, raises a flag each day of the school year, has recently

donated the chapter room to the student body, and gives its services as judges, cheerleaders, and guides to assist the various college and high school activities.

The honorary members include: President John F. Herget, Marian S. Taylor, and Caspar Harvey. Professor J. E. Davis has taken an active interest and assisted the chapter this year. Valuable service has been rendered by Dr. F. G. Edson, Professor Joe Van Trump, and Dr. H. I. Hester, faculty advisors.

ALPHA PSI OMEGA

OFFICERS

- Director Dorothy Parrott
- Business Manager Max Morgan
- Stage Manager Patty Lee Brandom
- Prompter Mary Jane Winn
- Sponsor Miss Virginia D. Rice



Brandom Parrott Smith Solomon Winn

Alpha Psi Omega is an honorary dramatics fraternity, active on the William Jewell campus since 1932.

During the year 1937-38, Alpha Psi Omega pledged and initiated four understudies. They were: Gene Hollmann, Max Morgan, Arnold Smith, and Lynn Solomon.

This group sponsored a one-act play, "Old Walnut", which was presented at the Drama Festival at the University of Missouri on January 28. At a later date the play was presented at the Princeton, Missouri, high school.

WILLIAM JEWELL PLAYERS



- Bales
- Banes
- Bell
- Brandom
- Burch
- Butler
- Cederburg
- Clevenger
- Collins
- Connelly
- Cook
- Davis
- Deisher
- De Weese
- Divina
- Downing
- Fowler, F.
- Fowler, V.
- George
- Hammon
- Hansell
- Heaton
- Helm
- Henson
- Hill
- Hoel
- Hollmann
- Howitt
- Hulings
- Jewell
- Kirkland
- Livingston
- Lynn
- McCampbell
- McDonald
- Mallott
- Mattes
- Morgan
- Morris
- Parrott
- Pinkerton
- Pixlee
- Reed
- Richardson
- Ronk
- Rutledge
- Smith, A.
- Smith, M.
- Solomon
- Stollings
- Tabb
- Taylor
- Williams
- Winn
- Witthaus



Sir Andrew, Sir Toby, the clown, Viola, and Sebastian of "Twelfth Night"

Davies, Winn, and scenes from "Strangers at Home"

William Jewell Players has been presenting excellent productions for several years and this year was no exception. A comedy, "Strangers at Home", was presented the first term. The second term brought forth "Mary Stuart", and the Shakespearean comedy, "Twelfth Night", was the third term's presentation.

OFFICERS

- | | |
|-----------------|-----------------------|
| President | Dorothy Parrott |
| Vice-President | Bob Kirkland |
| Secretary | Ruth Henson |
| Treasurer | Kenneth Banes |
| Program Manager | Helen Cederburg |
| Sponsor | Miss Virginia D. Rice |

Eighty-five

Eighty-four

INTERNATIONAL RELATIONS CLUB

The International Relations Club is one link in a vast international organization which is composed of 1149 chapters located in practically every country in the world. The Jewell chapter was founded in 1923 and is a key chapter in the Middle West.

The Club attempts to keep not only its members but the student body as well abreast of international affairs and give them a deeper insight into what is happening behind the scenes in the international situation which has been of unusual interest this year. This aim is furthered by sponsoring addresses by well-informed speakers, open forums, and attendance at regional conferences and conventions.

With an unusually large membership this active organization carried out its program under the admirable guidance of Dr. W. Holt Smith, faculty advisor. The other officers are:

Dr. John F. Herget	Honorary President
Maurice Winger	Acting President
Clifford Ingle	Vice-President
John Newport	Secretary-Treasurer
Dr. Manley O. Hudson	"God-Father"

(Dr. Hudson is now a member of the World Court and Head of the Department of International Law at Harvard.)

The unusually interesting program for 1937-38 included:

The Fall Banquet at which Milo Fowler Hamilton, prominent Kansas City attorney, spoke on "Anglo-American Relations." Mr. Hamilton has recently returned from a 3 year residence at Oxford University as a Rhodes Scholar. . . Fall All-Student Meeting - Dr. Ralph Major lectured and showed motion pictures of his recent tour of Italy and Central Europe. . . At the Winter Banquet Dr. Spaeth,

Ph. D., LL. D., President of Kansas City University, spoke on "Political Philosophies in the World Today." . . . Winter program the Club attended a program in Kansas City as guests of the Women's City Club. Several outstanding speakers contributed to a most outstanding program. . . Spring activities were inaugurated by a large group from the Jewell Chapter attending the 3 day, 8 state, Mississippi Valley Regional Conference of the International Relation Clubs held at Des Moines, Iowa. With 13 in the group the local chapter had the second largest delegation present. Dr. Holt Smith was faculty chairman of the discussion groups and Stanley Hirokawa was a student chairman.

The Spring Banquet was held in conjunction with Pi Gamma Mu. Dr. Queen, Head of the Department of Sociology at Washington University, spoke on "International Organization and Disorganization."

The William Jewell Library received two shipments of books from the National Headquarters of the International Relations Club this year. These books are of unusual interest in that they are preselected by a committee of national reputation.



W. Holt Smith, *Sponsor*

Aubuchon

Bailey

Banes

Butler

Campbell

Connely

Couch

Cowan

Deisher

Dunlop

Ingle

Hall, E.

Hall, J.

Henson

Hoel

Howitt

Jewell

Jolly

Kelly

Kirkland

McCampbell

Meinershagen

Merritt

Miller

Minor

Newport

Philbrick

Rainwater

Reed

Richardson

Roberts

Smith

Trotter

Weinhold

Winger



Eighty-seven

Eighty-six

PI GAMMA MU



Boner
Hall
Kelly
Kirkland

Minor
Newport
Phillips
Smith

Solomon
Tateishi
Trotter
Winger

The Pi Gamma Mu is a national and an international social science honor society. It was founded in 1924 at Southwestern College, Winfield, Kansas, and now has about 140 chapters. The Missouri Epsilon Chapter was organized at William Jewell in 1930 under the direction of Dr. Choice R. Howd. The membership is limited to upper-classmen, graduate students, alumni, and instructors who have attained a high degree of scholarship in the study of Social Sciences. Its purpose is the inculcation of the ideals of scholarship, scientific attitude and method, and social service in the study of all the social problems.

Just recently the chapter had a luncheon for Louis Mertins, an honorary member. On April 14, this same chapter conducted a formal dinner and had as their guest speaker Dr. Stuart A. Queen of Saint Louis.

There are three aims of the organization:

- (1) Inculcation of a scientific attitude toward the social questions in the mind of the undergraduates.
- (2) Keeping alive the scientific social interests of the graduate members.
- (3) To interest the general public in the scientific study of the social problems.

OFFICERS

Mildred Smith	President
Robert Kirkland	Vice-President
John Newport	Secretary-Treasurer
Prof. C. O. Van Dyke	Sponsor
Prof. U. R. Pugh	Sponsor
Dr. W. Holt Smith	Sponsor

Unphotographed: Banes, Stromberg

PI KAPPA DELTA



Left to right: Top Row: Kenneth Banes, Marie Barnette, Myrtle Bell, Constance Burkhardt, Frances Hall, Bob Kirkland, John Newport; Bottom Row: Madeline Parrott, Price Phillbrick, John Reed, Henrietta Sadler, Lynn Solomon, Joe Trotter, Clyde Williams, Maurice Winger
Unphotographed: Harvey Crawford

Pi Kappa Delta, the strongest national college honorary forensic fraternity, aims to foster and to further forensic interests in American colleges. The Missouri Delta was established in William Jewell in 1922 by Prof. P. Caspar Harvey. The membership is based upon

intercollegiate competition standards prescribed by the national organization. Constance Burkhardt, Frances Hall, Maurice Winger, Joe Trotter, and John Newport hold the highest honor an undergraduate may obtain, a diamond key, a degree of distinction.

FORENSICS

For the year 1937-38, William Jewell had not only the most extensive, not only the most ambitious but also the most successful forensic season in the history of the college. Space cannot be taken to list all of the separate activities of the debaters, orators, and extempore speakers. William Jewell participated in more than 116 intercollegiate debates, entered five oratorical contests, two extempore contests, one poetry reading contest, three sectional tournaments, and the national tournament. Students from the forensic squad spoke over radio stations not only in Kansas City but also in San Francisco, Los Angeles, New York, and many other cities in many states and over the coast-to-coast networks.

The climax, of course, was the winning of William Jewell's fourth national championship when Constance Burkhardt was awarded first place in women's extempore speaking at the national tournament at Topeka with an eleven point margin over her rival from California, the other national championships having been won in 1928, 1929, and 1930, with second places in national title contests having been won in 1926 and 1932. William Jewell has never gone to a national tournament without placing a contestant in the finals of some contest, winning a fourth in 1934 and a seventh in 1936. In the 1938 national William Jewell went farther in more contests than in any other national, placing contestants in three different semi-finals. Newport placed 10th in men's oratory and Henrietta Sadler placed 14th in women's oratory. 158 colleges and universities competed, representing 38 states with more than 800 contestants attending the 1938 national.

The debate trips of 1938 took teams into 39 states. Winger and Trotter travelled 8000 miles into 16 states to debate among others the University of Minnesota, University of North Dakota, St. Thomas, Gonzaga, Macalaster, St. Catherine, Drake, University of Montana, University of Washington, University of California at Berkeley, University of California at Los Angeles, University of Southern California, University of Arizona,

and (the second international debate of this season) with the University of British Columbia at Vancouver, this being the first William Jewell debate on foreign soil.

Constance Burkhardt, Frances Marie Hall, Philbrick, and Newport travelled 6000 miles into 23 states to debate among others the University of Florida, George Washington University, New York University, Rollins, Radcliffe, Harvard, Bates, Dartmouth, Centre, University of Michigan, University of Georgia, Indiana University. Congressman Clarence Cannon, Class of 1904, gave a luncheon in their honor in the Speaker's Dining Room of the Capitol which was attended by a number of senators and congressmen and their wives. Senator Capper and Mr. Cannon took the William Jewell delegation to the White House where they enjoyed an informal chat with President Roosevelt. Everywhere William Jewell alumni attended these debates. The feature home debates were with the University of Redlands, the University of Florida, and Drake University with Madeline Parrott, Marie Barnette, Solomon, and Williams as the featured debaters. Kirkland and Williams had the important radio debate with Rockhurst over WDAF.

Miss Burkhardt and Miss Hall were the women debaters at the national and won 5 out of 8; Winger and Trotter were the men debaters and won 5 out of 8. Philbrick was the men's extempore speaker. In the National Student Congress held in connection with the national tournament, Newport was a senator from Iowa-Missouri Province of Pi Kappa Delta; Philbrick and Kirkland were congressmen. Newport and Philbrick shared the spotlight and the newspaper headlines the opening day of the congress because they had been selected to present the Message from the President of the United States to the National Student Congress.

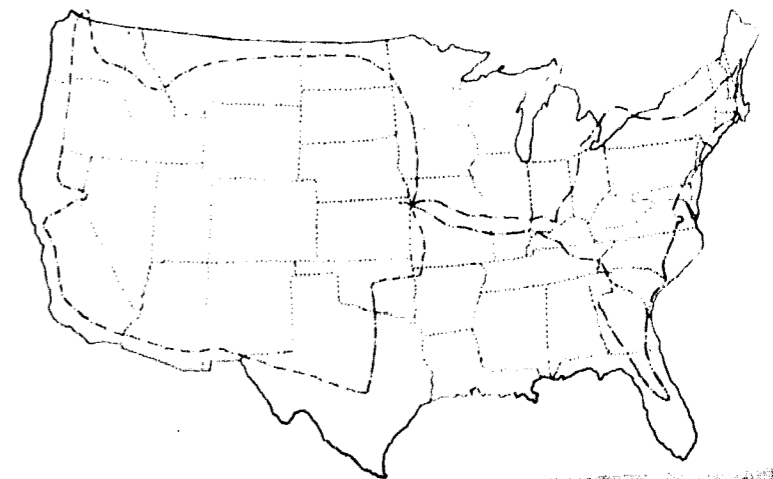
Henrietta Sadler won the women's division of the Missouri Oratorical Association contest at Tarkio and represented Missouri in annual contest of the Interstate Oratorical Association held at Northwestern University.

FORENSICS

Banes
Barnette
Burkhardt
Campbell
Durden
Hall
Kirkland
Moore
Newport
Parrott



Forensic Trails to
the East and
West
Philbrick
Phillips
Reed
Sadler
Solomon
Trotter
Williams
Winger



P. Caspar Harvey, Sponsor



SIGMA TAU DELTA



Bell
Burkhardt
Burch
Kirkland

Middleton
Pumphrey
Sword
Williams

Sigma Tau Delta is a national honorary writer's fraternity. It was founded at Dakota Wesleyan University in 1924. Mu Beta, the William Jewell chapter, was installed in 1928. Previously the same organization had been known here as the Scribblers' Club.

Sigma Tau Delta meets monthly at which time original works of the members are read and criticized.

OFFICERS

Clyde Williams	President
Myrtle Bell	Vice-President
Patty Lee Brandom	Secretary-Treasurer
Dr. J. P. Fruit	Sponsor
Prof. P. Caspar Harvey	Sponsor
Miss Virginia D. Rice	Sponsor

THE STUDENT



Dorothy Sword
Editor 1937

Maurice Winger
Editor 1938

R. B. Miller
Business Manager

William Jewell Student

Dorothy Sword, Editor

Fall term 1937

Associate Editor Maurice Winger
Business Manager R. B. Miller

STAFF

Patty Lee Brandom	Jack Hall
Sue Cowan	Ernst Stoeltzing
Mary Frances Rand	Arnold Smith
Myrtle Bell	Edgar Main

During the first half of the year Dorothy Sword edited the college weekly. Under her leadership some rather good creative prose and poetry found its way into the columns as an outstanding feature. She is to be congratulated on a good job completed.

Maurice Winger took the helm for the last half year and inaugurated a new type of make-up with the aid of an able technical advisor—Kenneth Banes. Student opinions blazed in the editorial column and stirred up some or-

The William Jewell Student

Spring term 1938

Editor-in-Chief Maurice Winger
Associate Editor Elizabeth Pinkerton
News Editor
Sports Editor Ernst Stoeltzing
Make up Editor Kenneth Banes
Columnist Patty Lee Brandom, Jack Hall
Reportorial Staff: Marie Barnette, Jean Burks,
Bebe Downing, Betty Laughlin, Mary Frances
Rand, Martha St. John, Jimmie Cary.
Business Manager R. B. Miller

ganized student body consciousness. The "Yellow" Student in the spring saw innovations in pictorial effects to the chagrin of some of the students.

Under the hand of Winger the Student has developed from a weekly news sheet into a ready agency for the expression of student opinion. At the present time there is more real interest in the weekly publication than has existed for some three or four years. May it so continue.

THE TATLER

Nelda Green
Editor

Loyd Kelly
Business Manager



The *Tatler* staff this year has been small and possibly poorly organized due to the editor's inexperience. Nevertheless this thirty-eighth edition of the *Tatler* has been published with perhaps a minimum number of difficulties under the prevailing circumstances. Much

praise and appreciation belong to the staff members who have been both willing and competent in preparing assigned tasks. An orchid to the business managers for a most successful *Tatler* Revue and *Tatler* Carnival!



Jack Hall
Assistant Business Manager

Frances Hall
Associate Editor

1938 TATLER STAFF

- | | |
|----------------------------|--|
| Editor-in-Chief | Nelda Green |
| Business Manager | Loyd Kelly |
| Associate Editor | Frances Marie Hall |
| Assistant Business Manager | Jack Hall |
| Sports Editor | George Wilson |
| Contributing Editors | Wendell Arnot
Bebs Downing |
| Photographers | Richard Brockhouse
Tom Scruggs
Prof. Joe Van Trump |

Other than the staff, recognition is due to the William Jewell Press, Burger-Baird Engraving Company, and DeCloud's Studio. The editor, especially, is grateful to them for their interest in and efficient service rendered to the 1938 *Tatler*.

BETA LAMBDA

Beta Lambda is a girls' honorary biology club, organized at William Jewell in 1927. Membership requirements include four terms of Biology with a high scholastic rating and a desire for further biological study.

The club has bi-monthly meetings at the home of Dr. Elmore and strives to have a special speaker, report or book review each month on some biological subject as well as

discussion of current biological events.

Beta Lambda is a member of the Missouri Academy of Science. This spring several of the members attended the fourth annual meeting of the Academy which was held at Rolla, Missouri. One of the club representatives read a paper on "Anatomical Abnormalities"

Beta Lambda is sponsored by Dr. Elmore and Miss Olive Thomas.



Burkhardt, President

Dinus, Vice-President

Tateishi, Secretary-Treasurer

Weakley, Reporter



This is the tale of an unfortunate cat

Dr. Elmore—Always busy

Awkward fellow—"Hank"



Barrett

Knight, Secretary

Rainwater, President

Solomon

MEN'S BIOLOGY CLUB

Students who are majoring in or are definitely interested in Biology and who have completed four terms of Biology with a "B" average compose the membership of the Men's Biology Club.

Formerly a member of Beta Beta Beta it

was reorganized in 1934 to become a member of the Missouri Academy of Science.

Activities include meetings twice a month at the home of Dr. Elmore, the sponsor, with a principal talk by one of the members and open discussion of current biological problems.

SIGMA PI SIGMA



Clarke

Shouse

Trotter

Founded in the year 1921 at Davidson College, Davidson, North Carolina, Sigma Pi Sigma now comprises 30 chapters in the United States and the Philippines. Xi chapter was founded at William Jewell College on May 20, 1930.

The society awards recognition to those with a high scholarship in physics, gives members an opportunity to work in a friendly and cooperative way in their favorite subject, and promotes interest in the advanced study of physics and allied sciences.

Activities during the year include from time to time presentation of motion pictures on scientific subjects and informal discussions on contemporary topics.

Professor J. H. Van Trump, faculty advisor.

OFFICERS

Joe Trotter
T. J. Shouse
George Clark

President
Vice-President
Secretary-Treasurer

FACULTY MEMBERS

Professor J. E. Davis
Mr. F. G. Edson

UNDERGRADUATES

Patty Lee Brandom
George C. Clarke
Fred Farris
John Linville
William Linville
T. J. Shouse
Joe Trotter
John Tucker



Van Trump

THETA CHI DELTA

γ



Bailey
Barrett
Godfrey
Knight



Dr. Edson and Godfrey
get their heads together



Rutledge
Thorne



The earnest student



Theta Chi Delta
Initiates

Theta Chi Delta, a national honorary chemistry fraternity, was installed in William Jewell College on May 2, 1931 to take the place of the Khem Club. The requirements for membership in the fraternity are five terms of chemistry, and a "B" average.

MEMBERS

Dr. Edson	Faculty Sponsor
Professor Davis	Faculty Sponsor
Professor Godfriaux	Faculty Sponsor
Professor Van Trump	Faculty Sponsor
Paul Godfrey	President
Walter Bailey	Vice-President

Jack Barrett
George Hale

Secret.
Treasur.

Wallace Rutledge
Wiley Thorne
Vernon Knight
Eugene Crystal
Walter Jewell

ASSOCIATE MEMBERS

Vance Kirkland
Jack Barnes
Marens Maltby
Glenn Adams

RELIGIOUS and MUSICAL

ALPHA ZETA PI

OFFICERS

James Lewis President
 Max Morgan Vice-President
 Wilson Hammon Secretary-Treasurer

HONORARY MEMBERS

Dr. Frank G. Edson
 Dr. Frederick M. Derwacter
 Professor Wilbur Bruner



Goss Hammon Hurst Lewis Morgan

On an evening in April, 1924, eight students met, petitioning God for guidance in their efforts that their motives might be blessed and that success might be granted them in the perfecting of an organization that should have as its ideal the building of Christian character. Out of this meeting grew the present organization known as Alpha Zeta Pi.

The colors of the organization are blue and white, and the lily-of-the-valley is the official

flower. The motto, "Anazopurein", is found in II Timothy 1:6, "to stir into flame the gift of God within you." Composed chiefly of ministerial students, Alpha Zeta Pi is known as the Christian social organization on the Hill.

The essential aim of this organization is to uphold the ideals of Christian manhood. The special benefit derived from such a group is the fact that matters related to Christian living can be discussed freely among the members.

BAPTIST STUDENT UNION

OFFICERS

President Neiger
 1st. Vice-President Dunlop
 2nd. Vice-President Solomon
 3rd. Vice-President Hunker
 Secretary Connely
 Chorister Arnote
 Pianist Neely
 Posters Davis
 Magazine Thorne
 Reporter Morgan
 Ministerial Reporter Gibbs
 Sunday School Reporter Jolly
 B. T. U. Reporter Fowler
 Y. W. A. Reporter Thomasson
 Faculty Advisors Miss Lindsay
 Dr. Edson
 Pastor Dr. G. W. Sadler



Arnote Connely Davis Dunlop
 Fowler Gibbs Hunker Morgan
 Neely Neiger Pickhardt Solomon
 Thomasson Thorne Waiting for the bus

The Baptist Student Union is the connecting link between the campus and the church. Every Baptist student enrolled in college is a member of this organization, under the leadership of the B. S. U. Council.

In cooperation with the Devotional committee of the W. J. C. A. the B. S. U. has encouraged a deeper spiritual life on the campus. The morning prayer meetings have been well attended and have been very beneficial. Students have engaged in an all-night prayer meeting each month of this school year. Several fireside devotional services have been conducted after church on Sunday evening. The prayer-mate movement has reached out to a larger number this year and these prayer-mates who make up the Master's Minority have met daily and prayed for their problems and for

the work on our campus.

The greatest event of the year was the coming of Dr. Geo. W. Truett to our campus from March 14-21. Surely no one could stir the hearts of students or so deeply touch and move them as did this great man of God in his simple, yet sincere, way. Our campus has been greatly blessed by his ministry among us.

We have reached First Magnitude this year due to a fine spirit of cooperation and zealous work by all.

MINISTERIAL GROUP

The Ministerial Group is an organization of students who are preparing for the Christian ministry. The purpose of the organization is to provide for the Christian Ministers of William Jewell professional guidance in their task of meeting the many and complex problems of modern life. The organization also includes an Associate Group composed of young ladies who are preparing for missionary service.

Every Tuesday afternoon at three o'clock this group of Christian leaders meets in Philomathic Hall. During these weekly meetings opportunity is afforded to hear many of the Christian leaders of our country. These programs are also designed to give the members of the group an opportunity to express their own religious ideas in student discussions. The following outstanding Christian leaders have addressed the group this year: Dr. Morris Ford, Pastor of the Calvary Baptist Church of Kansas City; Dr. L. R. Scarborough, President of Southwestern Baptist Theological Seminary; Dr. Albert M. Beaven, President of

Colgate-Rochester Divinity School; Mrs. Elizabeth Finn of the American Baptist Publication Society; Dr. Sanford Fleming, President of the Berkeley Baptist Divinity School; Dr. Carl Morgan of Eastern Baptist Theological Seminary; Dr. Homer Huff, Pastor of Immanuel Baptist Church of Kansas City, Kansas; Mr. W. O. Vaught, Baptist Student Secretary for the state of Missouri; Mr. A. J. Gillespie, Professor in the Southern Baptist Seminary in China. These speakers, in addition to faculty members, local pastors, and returned missionaries, have contributed definitely to the spiritual zeal of the group.

The present group was organized in 1923 and owes much of its present success to its faculty advisor, Mr. H. I. Hester and Mr. John F. Herget. To the Ministerial Group goes the honor of being one of the most efficient organizations on the campus.

"I am not ashamed of the Gospel of Christ, for it is the Power of God unto Salvation." Romans 1:16

OFFICERS SERVING FOR 1937

Lloyd Gibbs	President
Wilson Hammond	Vice-President
Eugene Crystal	Secretary-Treasurer
Dorothy Armentrout	Pianist
Max Morgan	Chorister

GROUP LEADERS

Fred Neiger
Woodrow Moore
Lavell Seats
George Hale
Margaret Young

OFFICERS SERVING FOR 1938

Roland Pickhardt	President
Loren Jolly	Vice-President
Herbert Jackson	Secretary-Treasurer
Georgia Rolston	Pianist
Jerry Ralls	Chorister

GROUP LEADERS

Henry Larsen
Wilson Hammon
Charles Schaeffer
Edwin Boone
Margaret Young



Hester

Anderson
Arnote
Bailey
Boone
Bowman

Brune
Cormack
Connely
Couch
Cravens

Dinwiddie
Dunlop
Elliott
Gatson
Gibbs

Goss, E.
Hammon
Hill
Hunker
Hurst

Ingle
Jackson
Jewell
Jolly
Larson

Lewis
Miller, B.
Morgan
Moore
Neiger

Pickhardt
Rolf
Ralls
Schaeffer
Scott

Seats
Thorne
White
Wyble
Zumwalt



One Hundred Three

WILLIAM JEWELL COLLEGE CHRISTIAN ASSOCIATION

The William Jewell Christian Association is an organization composed of the entire student body. It was founded on the William Jewell Campus on January 9, 1936 with the adoption of the present constitution. The purpose was "to coordinate the existing religious activities of the William Jewell Campus, to promote cooperation and prevent overlapping, and to foster the religious life of the Student body."

The organization consists of various committees including the Church Relations, Chairman Fern Fowler; Deputations, Chairman Eugene Crystal; Religious Assembly, Chairman Constance Burkhardt; and the Devotional Meeting, Chairman Wiley Thorne. These Committees direct the work of the Association. Each committee is composed of twelve members. The membership of the organization includes five faculty members, the ministers of the Liberty Churches, the entire Student Body, and is headed by Ralph Dunlop as President and Anna Lois Heaton as Secretary-Treasurer.

The aim of the W. J. C. A. is to promote worthwhile activities which include encouragement of church attendance, deputation work



Dunlop Thorne Burkhardt Fowler

in Liberty and Kansas City, sponsorship of outstanding speakers on the campus, and the arrangement of many attractive services including pre-Easter and pre-Christmas services.

Committees

Church Relations

Fern Fowler—Chairman
Lynn Solomon—Asst. Chrm.
Loren Jolly
Jack Hall
Marie Barnette
Paul Olsen
Gail Carter
Doryce Robinson
Virginia Hessell
Moseley Eames
Barbara Faris
Beverly Livingston

Devotional Meetings

Wiley Thorne—Chairman
Carl Hunker
Myrtle Bell
Nelda Green
Ted Elliott
George Clark
Roland Pickhardt
Lloyd Gibbs
Masako Tateishi
Gene Moore
Claudine Ross
Bechs Downing

Religious Assembly

Constance Burkhardt—Chrm.
Elmer Goss—Asst. Chrm.
Jack Martin
Thelma Thomasson
Dorothy Parrott
Maurice Winger
Ruth Henson
Georgia Ra'ston
Gene Amick
Henrietta Sadler
Harvey Crawford
Wendell Arnote

Deputation

Eugene Crystal—Chairman
Fred E. Neiger—Asst. Chrm.
Ercile White
Wilson Hammond
Julia Connely
Anna Lois Heaton
Maxine Brewer
Massy Hill
Dudley Lynch
Jewell Evans
Betty Ellis

Y. W. A.

Anderson
Armentrout
Bailiff
Backer
Berndt
Brandom
Brewer



Broadus
Clemings
Connely
Cunningham
Davis
Deisher
De Weese



Dinus
Downing
Draper
Ellis
Fowler
Garrett
George



Heaton
Helm
Hilton
Hulings
Jeffries
Kleppinger
Laughlin



Livingston
McCampbell
Manning
Mantz
Martenson
Middleton
Morris



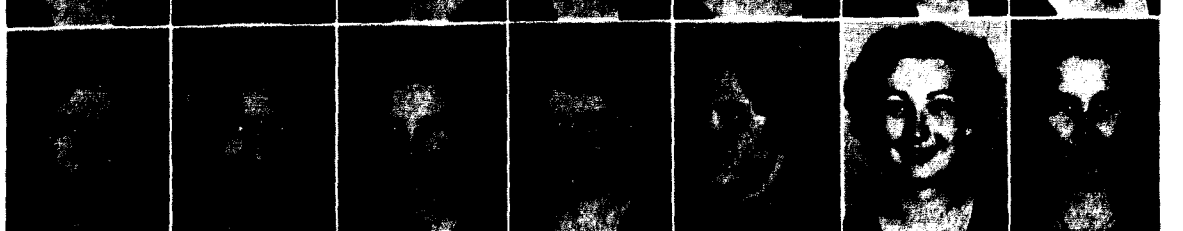
Neely
Payne
Pinkerton
Robinson
Pound
Richardson
Rogers



Ross
Stollings
Summers
Tabb
Taake
Tateishi
Thomasson



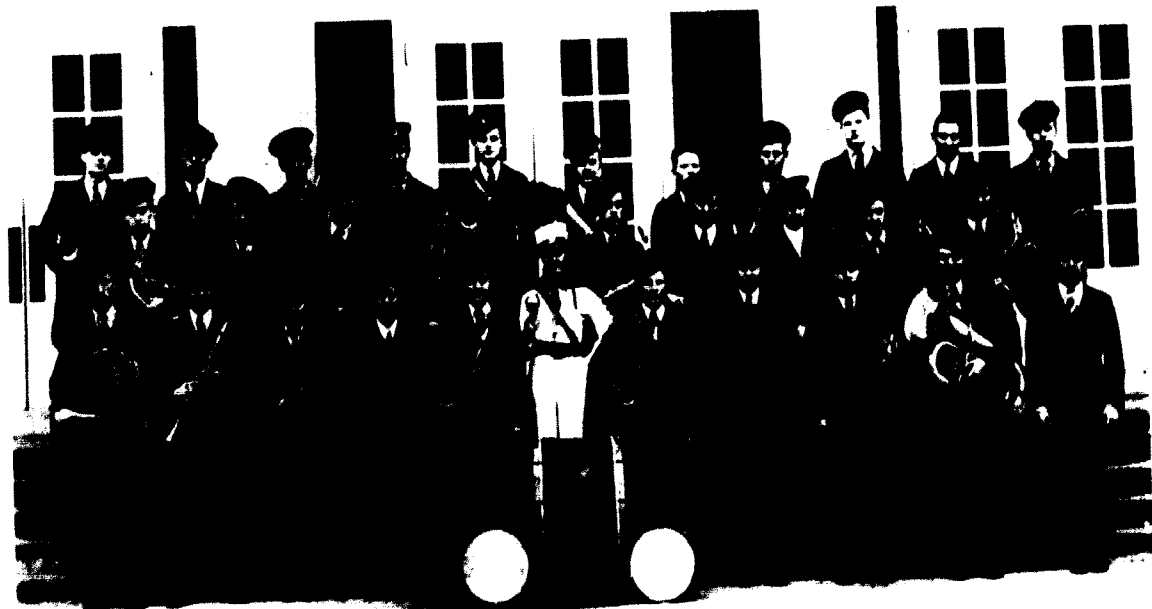
Thompson
Trowbridge
Turner
Underhill
Weakley
Witthaus
Young



BAND

One of the most enthusiastic organizations on the Hill, the William Jewell College Band under the baton of student directors Wiley Thorne and Gene Hollmann, has received

wide acclaim at the various athletic events of the college. With its increased instrumentation it renders the most difficult march in the latest SWING style.



Left to right—*Bottom Row:* Morris, Edmund, Clemings, Livingston, Berndt, Drum Major Sands, Middleton, Walters, Hill, Minor, Thorne. *Middle Row:* Jones, Simmons, Hunker, Rainwater, Shoemaker, Glenn Houser, Barnette, Cunningham, Gale Houser. *Top Row:* Knight, Jewell, Weinhold, Waid, Hollmann, Wyant, Connely, Dunlop, Maltby, Wallick, Smith.

GLEE CLUBS

Among the appearances of the musical groups perhaps the longest remembered will be that of May third when at the Spring Music Festival Handel's oratorio "The Messiah" was given by a combined chorus of the Men's and Women's Glee Clubs. The William Jewell Choral Union also sang at the First Baptist Church and at the Country Club Methodist Church in Kansas City, during the year. With the assistance of some Kansas City musicians, the opera "Mignon" was also presented.



David Grosch, Director

Women's Glee Club

W. Aubuchon
P. Brandon
M. Brewer
M. Broaddus
J. Burks
S. Cowan
B. Deisher
I. Dinus
B. Downing
J. Evans

L. George
E. Howitt
M. Hulings
G. Kleppinger
B. Laughlin
M. Lynn
M. McCampbell
G. Manring
K. Mantz
M. Middleton

M. Parrott
J. Richardson
G. Rolston
C. Ross
M. St. John
R. Stollings
B. Sevier
R. Taake
T. Thomasson
A. Tripp

Men's Glee Club

C. Allen
L. Anderson
W. Arnote
K. Banes
A. Boisen
B. Burtch
E. Clatworthy
K. Couch
E. Crystal
K. Durden
T. Durden
E. Elliott
W. Hammon

E. Hollmann
C. Hunker
H. Hurst
L. Kelly
H. Knight
V. Knight
H. Meinershagen
W. Middleton
W. Morris
L. Norris
V. Osborne
K. Pierce
W. Rainwater

J. Reed
J. Rolls
J. Ross
C. Schaefer
A. Smith
J. Smith
L. Solomon
B. Summers
G. Stillwagon
W. Westbrook
C. Williams
W. Wyant



The Tatler presents the winners of the high school beauty contest which was a part of the celebration in honor of "Daddy" Fruit's eighty-second birthday. They are, in order of their rank, Mildred Hall of North Kansas City, Harriett Harris, of North Kansas City, Wandella Hall of Raytown, Grace Dana of Richmond, and Betty Hedges of Excelsior Springs.

INTER-FRATERNITY COUNCIL



Hall Philbrick Riddell Sharp Shaw Trotter Waid Winger

Organized in 1924, the Interfraternity Council has, until recently, functioned as the median for the adjustment of interfraternity problems and the determination of common policies. At the present time the Council seems to exist in name only since it has failed to meet or elect officers during the past year. The membership of the Council includes two representatives from each of the four chapters.

MEMBERS

Jack Hall	Phi Gamma Del
Price Philbrick	Phi Gamma Del
Cyrus Riddell	Zeta Cl
Walter Sharp	Kappa Alph
Charles Shaw	Kappa Alph
Joe Trotter	Sigma N
Robert Waid	Zeta Cl
Maurice Winger	Sigma N

PAN-HELLENIC COUNCIL



Bell Cederburg Hall Howitt Parrott Sword

The Women's Pan-Hellenic council aims toward cooperation in matters mutual to both organizations and toward the promotion of a friendly spirit between the two groups. The Pan-Hellenic formal which the council directed last year is one of its most recent efforts in the development of friendly relations. The council is composed of three representatives from each group—the presidency alternating from year to year between the presidents of the sororities.

MEMBERS

Myrtle Bell	Beta Sigma Omicron - Pres.
Helen Jewell Cederburg	Beta Sigma Omicron
Frances Marie Hall	T N T
Frances Howitt	Beta Sigma Omicron
Dorothy Jayne Parrott	T N T
Dorothy Sword	T N T

KAPPA ALPHA

Pledges Thirty-five New Men

Alpha Delta chapter of the Kappa Alpha Order was installed in January, 1887. The year 1938 is the fifty-first for Alpha Delta on the William Jewell Campus.

At the conclusion of rush week this year, Alpha Delta had pledged thirty-five men, a number which had never before been pledged by any fraternity in the history of William Jewell.

Kappa Alphas are outstanding in the fields of football, basketball, track, forensics, dramatics, and hold six student assistantships.

The Kappa Alpha team won the all-school basketball championship and also won the in-

ter-fraternity basketball cup for the second consecutive year, being undefeated in the tournament.

Socially Kappa Alpha is noted for its traditional southern hospitality. The chapter house, being the only house on the campus built by a fraternity, is exceptionally well suited for parties, receptions, and other social functions. The most traditional of these is the annual Mother's day tea in May. Other outstanding social functions of the year were the "be comfortable" party held in the fall, the winter formal and the annual spring dance.

OFFICERS

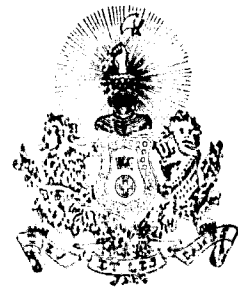
Walter Sharp	President
Charles Shaw	Vice-President
Edgar Main	Recording Secretary
Clyde Williams	Corresponding Secretary
Kenneth Alspaugh	Treasurer

KAPPA ALPHA PLEDGES

Glenn Adams
 Jones Baber
 Eugene Barnes
 Renile Bowles
 Rayburn Cantlon
 Edwin Clatworthy
 Harry Clevenger
 James Cummings
 Don Farris
 Fred Ferris
 William Gladstone
 John Glaser
 Ben Gragg
 Henry Guhleman

Gene Hollmann
 Gale Houser
 Glenn Houser
 Robert Hufft
 Maurice John
 Robert Kirkland
 William Lincoln
 Marvin Marks
 Wilbur Middleton
 James Lee Mosby
 John Norcross
 Robert O'dell
 Vernon Osborne
 Louis Robb
 Richard Sharp
 Ray Shepard
 Lawrence Shoemaker
 Frank Simmons
 Joe Simrall
 Leslie Smith
 Albert Sprague
 Doyle Sprague
 Ernst Stoeltzing
 Harold Wallick

Alpha Delta



Alspaugh
 Baber
 Bowles, C.
 Bowles, Renile
 Bowles, R.
 Brockhouse

Clatworthy
 Clevenger
 Ferris
 Gladstone
 Glaser
 Gragg

Guhleman
 Houser, Gale
 Houser, G.
 Hufft
 Johns
 Kendrick

Kirkland
 Knight, Vernon
 Knight, V.
 Lincoln
 Main
 Martin

Middleton
 Morrow
 Mosby
 Robb
 Rutledge
 Sharp, R.

Sharp, W.
 Shaw
 Shepherd
 Shoemaker
 Simmons
 Smith

Sprague, D.
 Stoeltzing
 Tucker
 Williams
 Wilson



PHI GAMMA DELTA

1938 Brings Trophies To Phi Gamma Delta

1938 marks the fifty-second year of Zeta Phi's existence as a chapter of Phi Gamma Delta at William Jewell. It has been a prosperous fifty-two years for Phi Gamma Delta and William Jewell as well and Zeta Phi celebrates its fifty-second anniversary with just pride.

Phi Gamma Delta's success this year has been dotted with the winning of cups—winning first place in the float contest at home-

coming and winning for the second consecutive year the *Tatler* Revue cup.

Outstanding among its members are Jack House, prominent Jewell athlete, and Price Philbrick, a member of the forensic group who made the Eastern tour this year.

Zeta Phi's social triumphs include the Homecoming dance, the Winter formal, and the Spring party plus the Annual Pig dinner for alumni and active members.

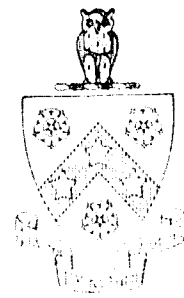
OFFICERS

Price Philbrick	President
Loren Butler	Treasurer
Jack Hall	Recording Secretary
Jim Merritt	Corresponding Secretary
R. B. Miller	Historian

PLEDGES

Eugene Amick
 J. F. Dopp
 Richard Cochrane
 Thomas Durden
 John Edmund
 Carl Hall
 John Lang
 Lee Majors
 Robert Malcolm
 Marens Maltby
 Bankhead Moyer
 Frederick Pumphrey
 Charles Strickler
 Arden Taylor
 William Turpin
 Wellington Westbrook
 Robert Williams
 Ralph Williams
 Kenneth Parks
 Robert Morf

Zeta Phi



Amick
 Butler
 Caneer
 Dopp
 Cochrane

Durden
 Edmunds
 Hall, C.
 Hall, J.
 Hoel

Huff
 Kelly, L.
 Kelly, R.
 Lang
 Majors

Malcolm
 Maltby
 Merritt
 Miller
 Moyer

Philbrick
 Pumphrey
 Shouse
 Strickler
 Taylor

Turpin
 Westbrook
 Williams, R.
 Williams, Rob't
 Yates



SIGMA NU

Attains National Distinction

The Gallaher Scholarship Cup given for scholastic achievement by the national organization of Sigma Nu was presented this year to Beta Xi. The William Jewell Chapter distinguished itself not only by being the only representative of a liberal arts college to gain the coveted trophy, but also by winning it with the highest average ever attained by any chapter.

But scholastic honors are "meat" to this

group of fellows. This year Beta Xi sent three men on the college debate tours to the east and west coasts and in every activity on the "hill" are found representatives and leaders with the five-armed star.

Sigma Nu has kept in step socially, with the annual hay-ride, a "slug" party and two formal dances. Its social distinction lies in originality and variety of entertainments.

OFFICERS

Joseph S. Trotter	Commander
Hugh Edgerton	Lieut.-Commander
John Newport	Treasurer
Lloyd Gibbs	Chaplain
Maurice Winger	Recording Secretary
Tom Scruggs	Sentinel

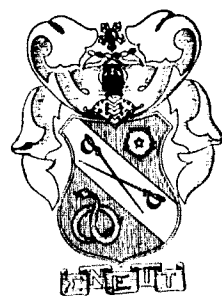
UNPHOTOGRAPHED

Ferrill, David	Holland, Robert
Cauthorne, James	Moore, Bob
Davies, William	Scruggs, Thomas
Quick, Dick	Moore, Gene

PLEDGE CHAPTER

James Brady
 Ralph Dunlop
 Bob Moore
 Gene Moore
 Jim Cauthorne
 Charles Goodson
 Mosley Eames
 David Ferrill
 William Davies
 J. C. Burnley
 David Lukens
 Robert Holland
 Robert Killam
 Dick Quick

Beta Xi



Bailey
 Banes
 Brady
 Burnley
 Campbell

Clark
 Dunlop
 Eames
 Edgerton
 Gillis

Gibbs
 Goodson
 Jewell
 Killam
 Lukens

Macy
 Newport
 Rendlen
 Roberts, J.
 Smith, A.

Smith, J. B.
 Solomon
 Trotter
 Weinhold
 Winger

ZETA CHI

Grants Honorary Memberships

In April 1917 Zeta Chi was recognized by the faculty and granted a charter, thereby taking its place among its older and more firmly established brothers.

In its early years casting not unwilling glances in the direction of long-established but slowly expanding national fraternities, Zeta Chi has since denied the advances of young and more rapidly expanding nationals, doubtless finding satisfaction in traditions and historical color strictly Cardinal in fabric and hue, and perhaps sufficiently advantageous in nature as to offset the questionable superior value of

OFFICERS

Cy Riddell	President
Harold Sheerer	Vice-President
Robert Waid	Treasurer
Bill Van Trump	Recording Secretary
Bill Craig	Corresponding Secretary
James Waid	Sergeant-at-Arms
Dr. Holt Smith	Faculty Advisor

PLEDGES

Bill Burch
 Carl Goss
 Robert Hansell
 Buster Summers
 Paul Walters

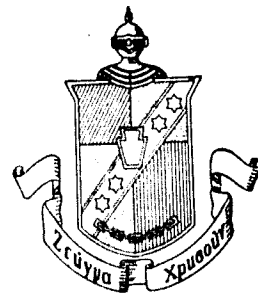
UNPHOTOGRAPHED

Goss, Carl	Summers, Buster
Craig, Bill	Van Trump, William
Hansell, Robert	Walters, Paul
Sheerer, Harold	

tradition more widely known but less naturally acquired.

Since it is strictly a William Jewell organization, it is fitting that during the past year Zeta Chi has granted honorary membership to the following faculty members: Dr. F. G. Edson, Dr. A. J. Moon, Prof. C. O. Van Dyke, Prof. J. H. Van Trump and Prof. Wilbur Bruner.

Significant in the machinery of Zeta Chi is its alumni association, with head quarters in Kansas City. President, Lute Robinson; secretary-treasurer, Kyle Bales.



Zeta Chi

Burch

Riddell

Waid, J.

Waid, R.



BETA SIGMA OMICRON

1888-1938

Alpha Psi has found that she has balanced well the dramatic, social, and scholastic triumphs of the past year. Dorothy Jane Collins has led her sisters in the histrionic field, appearing in two major productions. Frances Howitt and Norma Garrett were chosen as Queen Attendants to the "Winter Queen", and "Skippy" Pinkerton is the Editor-elect of the *Student*. Alpha Psi has played hostess several times this year at a Homecoming Luncheon, Founder's Day Banquet, a "Bowery

Dance", an "Arctic" dance, an April Fool Picnic, and a Valentine's Day tea in honor of the Kansas City Alumnae Chapter.

Since 1938 marks the fiftieth anniversary of the founding of Beta Sigma Omicron, the national convention this June will commemorate Beta Sigma Omicron's Golden Jubilee Year. The convention will be held in Excelsior Springs, and Jewell's chapter will play an active part as hostess to this convention.

OFFICERS

Myrtle Bell	President
Helen L. McCampbell	Vice-President
Virginia Frink	Recording Secretary
Mildred Smith	Corresponding Secretary
Jane Richardson	Treasurer
Frances Howitt	Warden
Theresa McEwan	Historian
Beebs Downing	Editor
Mrs. P. Caspar Harvey	Sponsor

PLEDGES

Sara Berndt
 Dorothy Jane Collins
 Dorothy DeWeese
 Beebs Downing
 Norma Garrett
 Marjorie Helm
 Marjorie Hulings
 Geraldine Kleppinger
 Beverly Livingston
 Theresa McEwan
 Mary Anne Medling
 Mildred Mattes
 Barbara Robb
 Doryce Robinson
 Maxine Ronk
 Claudine Ross
 Martha Tabb
 Ann Tripp
 Jean Wiltshire

Alpha Psi



Bell
 Berndt
 Cederburg
 Collins
 DeWeese



Deisher
 Downing
 Frink
 Garrett
 Helm



Howitt
 Hulings
 Kleppinger
 Livingston
 Medling



McCampbell
 McEwan
 Pinkerton
 Richardson
 Robb



Ross
 Smith
 Wiltshire



TNT

Wins Crowns

Crowns of both beauty and popularity have rested upon the heads of the TNT's this year—and not unworthily. Margaret Broaddus, freshman from Webster Groves, was elected Homecoming Queen by the combined vote of the student body and alumni of W. J. C. and Henrietta Sadler, chosen *Tatler* Revue Queen, was equally the people's choice.

Likewise TNT glows in the reflected glory of the achievements of Fran Hall, member of the champion women's debate team, and other

members who are found on the Dean's Honor Roll and in every campus activity.

Socially . . . during the football season TNT swung out with an informal "Joe College" dance. There were others at Christmas, in March, and in the spring with the usual faculty tea, alumnae luncheon, and chapter parties.

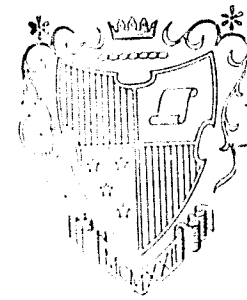
Backed by the alumnae organization the active chapter has edited a news bulletin twice this year. Its success will no doubt establish it as a TNT activity.

OFFICERS

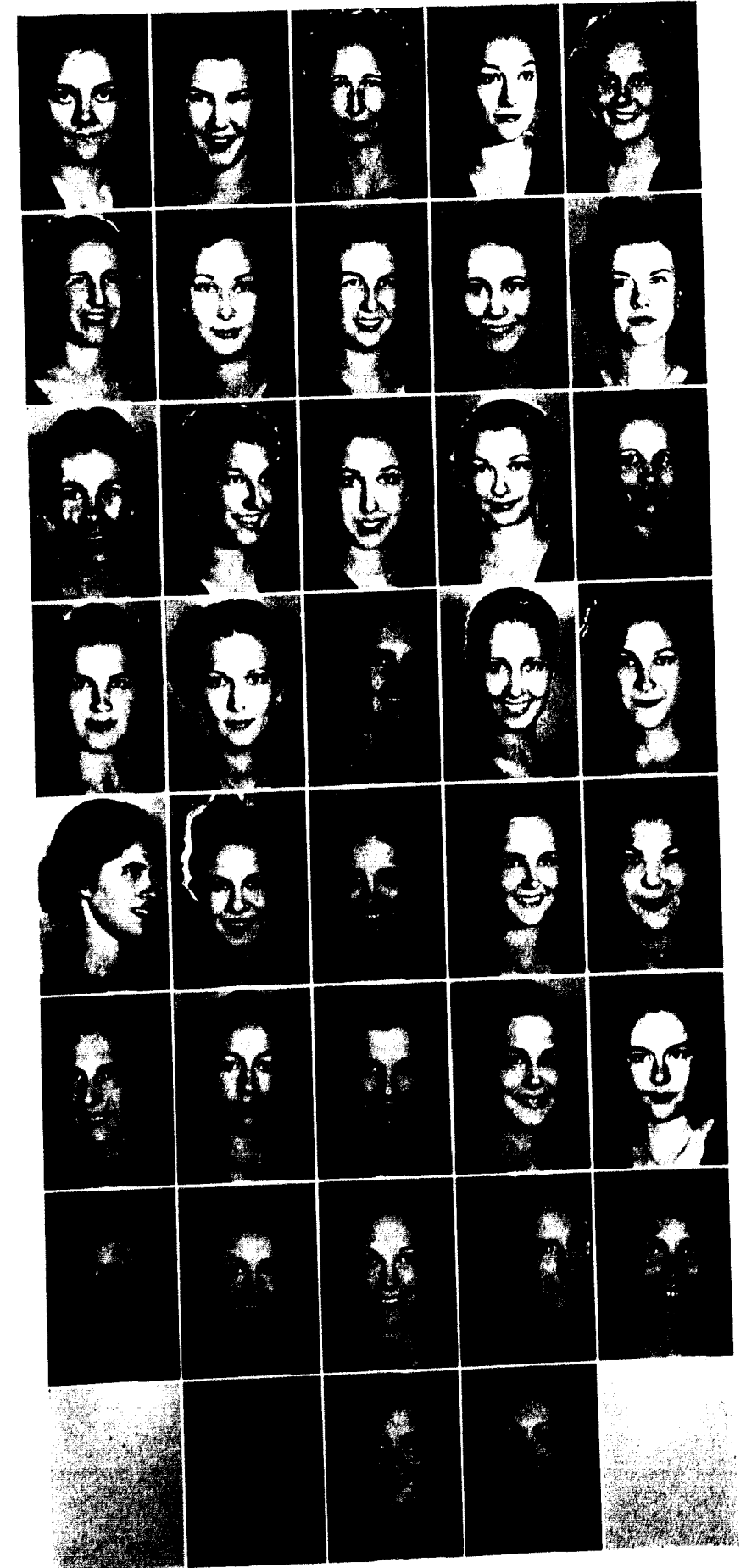
Dorothy Sword	President
Dorothy Jayne Parrott	1st Vice-President
Frances Marie Hall	2nd Vice-President
Patty Lee Brandom	Secretary
Mildred Stoeltzing	Treasurer
Dorothy Lowry	Warden
Ann Margaret Bell	Parliamentarian
Josephine Crockett	Historian
Virginia Arthur	Editor
Mrs. J. E. Davis	Sponsor

PLEDGES

Margaret Broaddus
 Virginia Cook
 Ellen Divina
 Lorene George
 Mary Ann Hufft
 Betty Laughlin
 Margaret Ruth Lynn
 Geraldine Manring
 Margaret Middleton
 Henrietta Sadler
 Martha St. John
 Roberta Taake
 Melva Dean Vaughn
 Martha Whitthaus



Arthur
 Barnette
 Bell
 Brandom
 Broaddus
 Carter
 Cook
 Cowan
 Crockett
 Divina
 DuVall
 Fowler
 George
 Green
 Hall
 Hufft
 Lancaster
 Laughlin
 Lowry
 Lynn
 Mallett
 Manring
 Middleton, M
 Middleton,
 Marnie
 Page
 Parrott
 Pixlee
 Rand
 Sadler
 Sevier, H.
 Sevier, R.
 St. John
 Stoeltzing
 Sword
 Taake
 Vaughn
 Winn
 Witthaus



ADVERTISEMENTS

Existing for the good of the
College and the Students

The William Jewell Press has been serving the College for 21 years.

During these 21 years the Press has begun and developed to a first-class commercial Shop without expense to the College. Annually a pay roll of \$2500-\$3000 is paid to a score of student employees. Not only does it afford a means of earning college expenses for students, but it also offers the Jewell man and woman personal service in selecting Quality printing at most Reasonable Prices.

An accredited member of the United Typothe-
tae of America and of
Graphic Arts. Recogn-
ized among the bet-
ter commercial presses
of the State and Nation.

William **J**ewell **P**ress

Printing - Photography - Photo-engraving - Printing Supplies

One Hundred Twenty-six

We are pleased

to have this opportunity of
thanking the student body, ed-
itors, and faculty for their
fine co-operation in handling
the photographic work for the
1938 TATLER.

DeCloud Studio

● Kansas City, Missouri

10th and Grand

Phone HArrison 3474

One Hundred Twenty-seven

"The Home of Aunt Kate's Sausage"

W. B. Schneider
Meat Company

Food Supplies of Quality Since 1900

518-520 Walnut Street
KANSAS CITY, MISSOURI

To sip a refreshing drink
To nibble a sandwich
To meet the gang

Southside Pharmacy is - - T O P S

SHELL SERVICE STATION

E. B. Duncan & Sons, Props.

Goodyear Tires Batteries
100 West Kansas Street Telephone 640

H. R. Banks Lumber Company

All Kinds of Building Materials
A Complete Line of Cook's Paints and Brushes

Liberty, Missouri Phone 389

THE LIBERTY CHRONICLE

SPECIALIZING IN FINE COMMERCIAL PRINTING

ADVERTISING • NEWS

"ON THE SQUARE", LIBERTY, MISSOURI

Telephone 603

Weathers Every Storm

Millions of Americans have found that even in times of great adversity, Life insurance offers the surest protection, and as proof of their confidence carry more than One Hundred Billions of life insurance in American Companies. Savings are kept intact. The future is constantly safe guarded, universal thrift is encouraged.

Kansas City Life Insurance Company

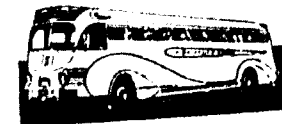
"SUCCESS SHADOWS"

Standing Behind the
Successful Man Is
The Shadow of
A Financial
Background
Of Ready
Money

...have yours in an account at
FIRST NATIONAL BANK

is an assurance of a sustaining
co-operation in all of your endeavors

THE ABC OF



TRAVEL

A Pleasant Trip

Bargain Fares

Comfort & Convenience

When you travel by Union Pacific Super-Coach, you go the easy, economical way. Fast frequent schedules take you quickly to your destination while you relax in luxurious comfort. You'll like the friendly informality aboard and the courteous assist-

ance of your local Union Pacific bus agent in planning your trip. Fares are much lower than the cost of driving your own car. Make every out-of-town trip this comfortable, convenient, low-cost way.

UNION PACIFIC STAGES
No. 1 Water St., Liberty, Mo. Phone 110

Hughes-McDonald

Dry Goods Company

COMPLETELY OUTFITS THE COLLEGE GIRL

Quality

Low Prices

STUDENTS!

Your patronage has been appreciated throughout 1937. It is our aim to merit this consideration during 1938.

BRANT'S

E. J. McCartney
Manager

Rates \$1.00-\$2.00
Telephone 533

The Colonial Hotel

Dining Room
A HOTEL OF EXCEPTIONAL COMFORT
LIBERTY, MISSOURI

James Costello Lumber Company

All Kinds of Building Material
Over 50 Years of Quality and Service

Phone 104

112 S. Main St.

ELECTRIC SHOE SHOP

The best place to get your shoes repaired

OPPOSITE POST OFFICE LIBERTY, MO

Liberty Flower Shop



Bessie Barkley

9 West Franklin

Phone - Nite or Day - 466

Liberty Marketing Company

Grain - Hay - Feed - Coal
McCORMICK-DEERING FARM
IMPLEMENTS, TRACTORS, TRUCKS

L. A. Davis, Mgr.

Liberty, Missouri

Clay County Abstract Co.

Liberty, Missouri

Officers: Martin E. Lawson, President; James S. Simrall, Vice-President; Alan F. Wherritt, Secretary; C. H. Coppinger, Treasurer and Manager

KANSAS CITY-WESTERN DENTAL COLLEGE

10th and Troost Kansas City, Missouri

- Entrance Requirement two years
- Faculty of fifty-two
- Excellent equipment
- Two years Clinical practice - Hospital affiliations

Compliments of

Church-Archer
Funeral Home

Dodge

Plymouth

Schaeffer Motor Co

Liberty, Missouri

South Main Street

Telephone 21



Knights of Pythias

No. 176

In appreciation of your past Social Functions

GREEN JEWELRY COMPANY

Manufacturers of official William Jewell College jewelry and institutions, Fraternity and Sorority stationery, jewelry, and bids.

1016 Walnut St.

Kansas

VALUE

The real value of advertising lies in its effectiveness... the actual results obtained

The Liberty Tribune and Advertiser has been serving Clay County since 1846... standing behind its promises with skilled workmanship and complete service

Country-wide in Service, Coverage - Mrs. A. L. Preston

Caledonia Greenhouses

CUT FLOWERS, PLANTS, CORSAGES
Wildo L. Cook

23 S. Prairie St.
Ph. 741 Day Nite

Liberty Monument Company

Monuments and Markers

"Rock of Ages" Dealers

Chas. Dugan and F. O. Shouse, Prop.

Liberty, Missouri

Phone 425

★ For years . . . You have gotten the Finest for the Least

Liberty Grocery Company

Gibson

Phone 181

2 N. Main St.

Compliments

KANSAS CITY LIFE INSURANCE CO.

Howard C. Chisman
Special Representative

Compliments

OF

Missouri Gas and Electric Service Company

One Hundred Thirty-one

One Hundred Thirty

A. L. McGINNESS

Druggist

Spalding Baseballs
Johnson Candies
A. D. S. Supplies
Rexall Remedies
Anso Films

PHONE 58

LIBERTY, MO.

McArthur's

5c to \$1 Store

- Notions, Toilet Articles
- Bulk Candies 10c, 15c, 25c
- School Supplies

Clewiston Motor Co.

E. E. Kelly, Pres.
Clewiston, Fla.

CATERPILLAR TRACTORS
ROAD MACHINERY

The Eastern Baptist Theological Seminary

1808-1818 South Rittenhouse Square
PHILADELPHIA

The finest in Conservative
Christian Theology that
is Biblical, Dynamic
and Personal in
Application

All Avenues of Preparation
FOR Definite Christian Service



Radiate from Eastern

Training in Sacred
Music to prepare
leaders in Church
Music who
are warmly
evangelistic

A Christian Education
Course with a basic
Biblical content,
sound education-
al technique, and
a practical
emphasis

Courses lead to
Degrees in Theology,
Christian Education,
Sacred Music, by authority of
the Commonwealth of Pennsylvania

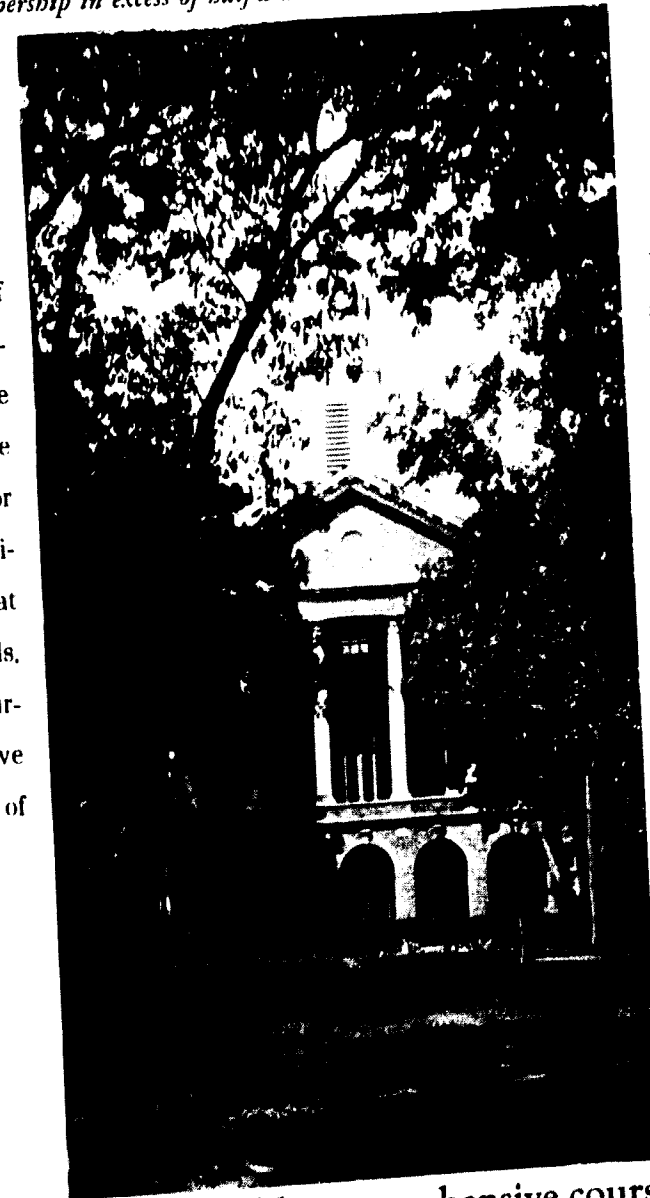
Make Application Early

FOR INFORMATION ADDRESS: PRES. GORDON PALMER

One Hundred Thirty-two

The Kansas City Baptist Theological Seminary

Located at "The Heart of the Continent", in the midst of a Baptist constituency of more than four thousand churches having a total membership in excess of half a million.



The Seminary grew out of a distinct need for an institution peculiarly responsive to the demands of "The Great Central West". For thirty-six years it has striven, often against great odds, to meet these needs. In the light of all the circumstances its friends have just grounds to be proud of its record.

By conviction, tradition, and practice, the Seminary is conservative in theology, evangelistic in spirit, and loyal in alignment. It accepts the New Testament as the sufficient authority and guide in all matters of faith and practice. It remains steadfastly true to historical Baptist principles.

Carefully planned, thoroughly comprehensive courses of study are provided, leading to degrees in theology and Christian education. To meet the ever-increasing need for trained Christian workers other than pastors, every effort is put forth to make available adequate opportunities for such training; it remains, however, that the primary emphasis of the Seminary will be increasingly upon the regular theological degrees, based upon full college graduation as the pre-requisite academic preparation. Separate curricula are set up for the college and the non-college groups.

Seminary Heights
Kansas City, Kansas

One Hundred Thirty-three

GROZER THEOLOGICAL SEMINARY

"A School that stands for Reality in Religion"

If you are interested in knowing more about a theological school that stands for thorough scholarship, the international outlook at this crucial hour in world affairs, and the application of the spirit of Christ to present-day problems, write for catalogue to:

James H. Franklin, Pres.
Chester, Pennsylvania

Berkeley Baptist Divinity School

A Standard Theological Seminary
With all departments
Balanced Curriculum
offering both practical and theoretical courses
Loyal to Christ
and to scholarly ideals
Ideal location
in great metropolitan and educational center
on San Francisco Bay
An opportunity
for earnest students, both men and women
ADDRESS INQUIRIES TO
SANDFORD FLEMING, PRESIDENT
2606 DWIGHT WAY, BERKELEY, CALIFORNIA

Kansas City School of Law

FOUNDED IN 1895

- Now combines day and night schools with three full time professors added to faculty.
- Two years of college required for matriculation.
- Tuition payable in installments.

For Catalogue and further particulars address

KANSAS CITY SCHOOL OF LAW
Law School Building
Kansas City, Mo.
Tel. HA 3262

You are cordially invited to visit our Store

- TEXT BOOKS
- Books of all Description
- Bibles - Testaments

Our Store is full of interesting items

- You are welcome at all times

Second-Book Department

- Our Book Catalogues are free

Quotations cheerfully sent at all times

The JUDSON PRESS

W. J. SMITH, Manager
1107 McGee St. Kansas City, Missouri

A pioneer among
Liberty's institutions

National Commercial Bank

Liberty, Missouri

CHURCH BEAUTY SHOP

Up-to-the-minute Hairdressing and
Permanent Waving our Specialties TEL 421

SOUTHWESTERN BAPTIST THEOLOGICAL SEMINARY

Consecrated Scholarship
Conservative Leadership
Christian Fellowship

For information write
PRES. L. R. SCARBOROUGH
Seminary Hill, Texas

William Jewell College - First Class High School
Fine Churches - Lovely Residential Section
Business Opportunities - Near Kansas City
Fine Railroad and Bus Service - Good Highways



Chamber of Commerce

Liberty, Missouri
A City of Homes

Skelly Oil Products

GEORGE WILSON
RICHARD THOMPSON

LIBERTY OIL CO.

Phone 90 Liberty, Missouri

Griffey

Fruit and Vegetable Market

Fresh from the markets daily

Phone 852

To make your Tatler a success

Read their advertisements and show your appreciation by your patronage

One Hundred Thirty-five

George R. Denny, Pres. S. T. Kelly, Jr., Cashier
Louis Hessel, V.-Pres. C. L. Turnage, Ass't Cashier

CAPITAL \$75,000.00

KEARNEY TRUST COMPANY

Kearney Missouri

Tog'ry Shop

Liberty, Missouri

Cardinal Auto & Electric

Liberty, Mo. Supply Phone 40

Standard Oil Service Station

M. M. Leatherman
Phone 399

Progressive Shoe Shop

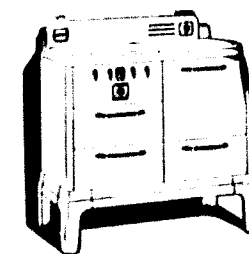
Also 666 taxi

Leo Jackson, Prop. West Side of Square

The Citizens Bank

of Liberty, Missouri
Your account solicited

Member Federal Deposit Insurance Corporation



GAS

Cooks BETTER
Costs LESS

Central West
Utility Company

These merchants have contributed most generously.

The



Spirit of achievement

● By a Student

{Upon returning from a twenty-five hundred mile debate trip through twenty-seven states.}

"At every place we spoke there were loyal alumni to greet and support us. They were almost always leaders in some field of endeavor, even at Washington, D. C. As we came to know them I realized that there really is a distinguishing mark placed by William Jewell upon her graduates.

They all seem to have the spirit of achievement."

● By an Alumnus

{Writing back from California in the midst of a prominent literary career.}

"So, from our hill the highways reach all shores,
And to us men may come for that great boon:
The inspiration caught from burning hearts,
In hill-top hopes of high experience."

WILLIAM JEWELL COLLEGE

One Hundred Thirty-six



Congratulations!

Only those who have actually done the job know how much work there is to the planning, compiling, and financing of a college annual.

Nelda Green and Loyd Kelly have splendidly upheld the "Tatler" tradition, and have earned congratulations which we hope the campus will generously give them. We wish them both well in future undertakings.

BURGER · BAIRD

Engraving Company
GRAPHIC ARTS BUILDING
KANSAS CITY · MISSOURI

One Hundred Thirty-seven

Individual Initiative

IT HAS given plastic youth encouragement in its beginning fight for opportunity and advancement.

IT HAS started and built all the thriving organizations in the industrial world today.

IT HAS made possible the unparalleled services which are yours.

IT HAS put the United States in the leading role of safeguarding the liberty of the individual.

THIS WHOLESOME INITIATED, the most impelling force of humanity since the world began, if hampered, impeded, and smothered by a government with dynastic inclinations, will be impaired, the sad result being the inevitable decline of business itself and the regimentation of youth.

The torch of responsibility for maintaining this driving force, Initiative, is yours to preserve for future generations.

KANSAS CITY POWER & LIGHT CO

14th and Baltimore

Kansas City, Mo.

One Hundred Thirty-eight

INDEX

STUDENTS

Adams, Glenn 54
Adams, Richard 60
Allen, Charles 40
Allen, Melvin 52
Alspaugh, Kenneth 42, 113
Amick, Eugene Earle, Jr. 34, 54, 115
Anderson, Kenneth A. 54, 102
Anderson, Lewis 48, 106, 107
Anderson, Mildred 54, 105
Armentrout, Dorothy B. 42, 105
Arnote, Wendell 48, 101, 102, 107
Arthur, Virginia 36, 81, 123
Ashlock, Marvin 46
Aubuchon, Glenwood 36, 82, 86
Aubuchon, Wilma Gertrude 48
Baber, Jones Madison 48, 113
Backer, Mildred 44, 105
Bailey, Walter 33, 36, 81, 98, 102, 117
Bailiff, Josetta 48, 105
Baker, Charles 60
Bales, Doris 48, 84
Banes, Kenneth 42, 82, 84, 86, 89, 90, 94, 117
Barnes, Eugene 60, 112
Barnes, John 54
Barnes, Roy E. 60
Barnette, Marie 48, 89, 90, 106, 123
Barrett, Jack 33, 36, 96, 98
Bell, Ann Margaret 47, 84, 123
Bell, Myrtle 42, 89, 92, 110, 121
Berndt, Sara 54, 105, 106, 121
Blanchard, Frank 48, 68
Boisen, Averill 60
Boman, James 52, 112
Boner, Claude 42, 84, 88
Boone, Edwin 42, 102
Bowles, Chester 42, 68, 69, 113
Bowles, Renile 54, 113
Bowles, Robert 36, 66, 69, 70, 81, 113
Bowman, Welbern 42, 102
Brady, James 48, 119
Brandom, Patty Lee 48, 83, 84, 94, 105, 123
Brant, Ralph 52, 66, 68
Bratton, Francis 60
Brewer, Maxine 48, 105
Bright, Willard 46
Broadus, Margaret 54, 105, 123
Brockhouse, Richard 48, 113
Brown, Betty 54, 106, 107
Brown, George 54

Brune, Ervin 42, 102
Bruner, Estil 36, 77, 81
Bryant, Virginia 54
Burch, William 48, 84, 92, 119
Burkhardt, Bessie 54
Burkhardt, Constance 33, 36, 81, 89, 90, 92, 96, 104
Burks, Jean 42
Burnley, J. C. 54, 117
Burtch, Robert 42, 74
Butler, Loren 42, 84, 86, 115
Calhoun, Joseph 60
Campbell, James 48, 86, 90, 117
Caneer, Lon 48, 115
Canning, Ross 52
Cantlon, Reyburn 60, 112
Carter, Gail 48, 123
Carter, Bill 60
Cary, Jimmie 54
Cauthorn, James 52, 74
Cederburg, Helen Jewell 36, 81, 84, 110, 121
Chappell, Juanita 42
Clarke, George Beverly 33, 42, 97, 117
Clatworthy, Edwin 54, 68, 113
Clemings, Virginia May 54, 105, 106
Clevenger, Harry 42, 84, 113
Clevenger, John Jewell 60
Cochrane, Richard 54, 115
Cockrell, Thomas 60
Coleman, Hubert 60
Collins, Dorothy Jane 54, 84, 121
Connely, Julia 33, 42, 84, 86, 105
Connely, William 54, 82, 102, 106
Cook, Virginia 54, 84, 123
Cormack, Everett 48, 102
Couch, Kenneth 42, 86, 102, 107
Cowan, Sue 36, 86, 123
Craig, William 46, 118
Cravens, John 42, 102
Crawford, Harvey 60
Crockett, Josephine 42, 123
Crockett, Helen 36
Crossett, Bernice 42
Crouch, A. J. 48, 70
Croy, Vernon 60
Crystal, Eugene 46
Cummings, James 60, 112
Cunningham, Mariana 36, 105, 106
Davies, William 60, 116
Davis, Kenneth 60
Davis, Nan Elizabeth 48, 84, 101, 105
Davis, Nelson 36
Deisher, Bonnell 33, 48, 86, 105, 107, 121
DeWeese, Dorothy 54, 84, 105, 121

One Hundred Thirty-nine

Dinus, Irene 24, 42, 96, 105
 Dinwiddie, James R., Jr. 48, 102, 107
 Divina, Ellen 54, 84, 123
 Dopp, I. T., Jr. 54, 106, 115
 Downing, Beebs 33, 54, 84, 105, 121
 Draper, Ruth 54, 105
 Drenon, Russell 60
 Dunlop, Ralph 36, 82, 86, 88, 101, 102, 106, 117
 Durden, Kennerh 60
 Durden, Tom 54, 115
 DuVall, Marjorie 36, 123
 Eames, Mosley 54, 106, 117
 Edgerton, Hugh 36, 117
 Edmund, John M., Jr. 48, 82, 106, 115
 Elliott, Edwin 42, 102
 Ellis, Betty 54, 105
 Evans, Jewel C. 54
 Faris, Barbara Ann 48
 Farris, Donald 52, 67, 70, 112
 Farris, Fred 48, 70, 113
 Ferril, David 60, 116
 Foote, David 60
 Fowler, Fern 36, 84, 101, 105
 Fowler, Virginia 48, 84, 123
 Friesen, Aaron 46
 Frink, Virginia 42, 121
 Gaither, Harvey 36
 Garrett, Norma 54, 105, 121
 Gatson, Curtis 42, 102
 George, Lorene 48, 84, 105, 123
 Gibbs, Lloyd 33, 36, 101, 102, 117
 Gillis, Isaac 54, 117
 Gladstone, William 54, 113
 Glaser, John 54, 113
 Godfrey, Paul 33, 36, 98
 Goodson, Charles 56, 117
 Goss, Carl 54, 66
 Goss, Elmer 48, 66, 100, 102, 104
 Gover, Ellis 48
 Gragg, Benjamin 54, 113
 Green, Nelda 42, 94, 123
 Guhleman, Henry 42, 113
 Haines, Orville 46
 Hair, James 46
 Haldeman, Earl 54
 Hale, George 40, 98
 Hall, Carl G. 54, 115
 Hall, Frances Marie 33, 42, 86, 89, 90, 94, 110, 123
 Hall, Jack 36, 83, 86, 93, 94, 110, 115
 Hammon, Wilson 36, 84, 100, 102, 107
 Hansell, Robert 48, 82, 84, 118
 Harris, James Elton 48
 Heaton, Anna Lois 34, 42, 84, 105
 Helm, Marjorie 54, 84, 105, 121
 Henson, Ruth 33, 48, 84, 86
 Hessell, Virginia 48
 Hill, Charles Massey 48, 102
 Hill, Richard 54, 84, 106

Hilton, Mary Katherine 56, 105
 Hirokawa, Stanley 42
 Hoel, Robert 48, 84, 86, 115
 Holland, Bob 60, 116
 Hollmann, Eugene 33, 48, 84, 106, 107, 112
 House, Jack 40, 66, 70, 114
 Houser, Gale 56, 106, 113
 Houser, Glenn 56, 106, 113
 Howitt, Frances 42, 84, 86, 110, 121
 Huff, Warren 33, 48, 68, 115
 Huff, Mary Ann 56, 123
 Huff, Robert 56, 113
 Hulings, Marjorie 48, 84, 105, 107, 121
 Hunker, William Carl 48, 101, 102, 106
 Hurst, Harold 36, 100, 102, 107
 Ingle, Clifford 36, 86, 102
 Jackson, Herbert 42, 102
 Jeffries, Opal Marie 56, 105
 Jewell, Walter 33, 50, 82, 84, 86, 98, 102, 106, 117
 John, Maurice 56, 70, 113
 Johnson, Arthur 60
 Jolly, Loren 36, 86, 102
 Jones, Dorothy 52
 Jones, Philip Marion 42, 82, 106
 Kelly, Loyd 42, 86, 88, 94, 107, 115
 Kelly, Robert 50, 107, 115
 Kendrick, Milton 50, 113
 Kennedy, Eva Madena 46
 Killam, Robert C. 56, 82, 117
 Kirchner, Mrs. Opal 52
 Kirchner, Russell 40
 Kirkland, Robert 33, 36, 81, 82, 84, 86, 88, 89, 90, 113
 Kirkland, Vance 56
 Kleppinger, Geraldine 50, 84, 105, 121
 Knight, Homer 36, 107
 Knight, Vernon 33, 44, 96, 98, 106, 113
 Knight, Victor 34, 44, 66, 69, 113
 Lancaster, Edith 50, 123
 Lang, John L. 56, 115
 Larson, Henry 50, 102
 Laughlin, Betty 56, 105, 123
 Leeper, Harry 60
 Lewis, James 38, 100, 102
 Lewis, Ruth 50
 Lincoln, William 56, 113
 Linvill, John 56
 Linvill, William 56
 Livingston, Beverly 56, 84, 105, 106, 121
 Loomis, John 60
 Lowry, Dorothy 44, 122
 Lukens, David 56, 117
 Lynch, Dudley 56
 Lynn, Margaret Ruth 56, 84, 106, 123
 McCampbell, Helen Louise 33, 50, 84, 86, 105, 123
 McDonald, Norman 44, 66, 69, 74, 84
 McEwan, Theresa 56, 121
 Macy, Weldon 56, 117
 Main, Edgar 44, 113

Major, F. Lee 56, 82, 115
 Malcolm, Robert, Jr. 56, 115
 Mallet, Joyce 50, 84, 123
 Maltby, Marens 56, 106, 115
 Manring, Geraldine 50, 105, 107, 123
 Mantz, Kathleen 50, 105, 107
 Marks, Marvin 60, 112
 Marshall, Donald 56
 Martensen, Marie 50, 105, 107
 Martin, Jack 36, 66, 69, 70, 74, 113
 Mattes, Mildred 56, 84, 120
 Means, Leroy 44, 69, 74
 Medling, Mary Anne 50, 121
 Meinershagen, Hyman 50, 86
 Merritt, Harold 55, 68
 Merritt, Jim Scott 44, 82, 86, 115
 Middleton, Margaret 56, 105, 123
 Middleton, Marnie 50, 92, 123
 Middleton, Wilbur W. 56, 68, 106, 113
 Miller, Billy 44, 102
 Miller, George 60, 56
 Miller, Henry 54, 68
 Miller, James 56, 106
 Miller, R. B. 44, 86, 93, 115
 Minor, Carl 38, 86, 106
 Moore, Eugene 56, 90
 Moore, Gentry 40
 Moore, Katrine 56
 Moore, Robert 52, 67, 116
 Moore, Woodrow 44, 102
 Morales, Milton 38, 74
 Morf, Robert 50, 114
 Morgan, Max 44, 84, 100, 101, 102
 Morris, Syrena 50, 84, 105
 Morris, Wilbur Dean 60
 Morrow, Allen 50, 113
 Mosby, James Lee 50, 113
 Moyer, Bankhead 55, 115
 Neely, Louise 56, 101, 105
 Neiger, Fred 38, 101, 102, 104
 Nelson, Stanley 52
 Newman, Charles 52
 Newport, John 33, 38, 81, 82, 86, 88, 89, 90, 107, 117
 Norcross, John 60, 66
 Norris, Lyman W. 46
 Odell, Robert 56
 Oliver, Lawrence 60, 68
 Olsen, Paul 52
 Osborne, Elmer Vernon 60
 Page, Christine 44, 123
 Parks, Kenneth 60
 Parrott, Dorothy 44, 83, 84, 110, 123
 Parrott, Madeline 56, 89, 90
 Payne, Eleanor 44, 105
 Peters, Mrs. Anne 52
 Petty, Jean 56
 Philbrick, Price 33, 38, 86, 89, 90, 110, 115
 Phillips, Leo 38, 88, 90

Pickhardt, Roland 38, 97, 101, 102
 Pierce, Kenneth 46
 Pinkerton, Elizabeth 44, 84, 93, 105, 121
 Pixlee, Virginia Ann 50, 84, 123
 Pound, Rosemary 56, 105
 Pumphrey, Frederic 44, 86, 115
 Quick, Dick 56, 66, 68
 Ragan, James 60
 Rains, Fred 46
 Rainwater, Ivan 33, 38, 86, 96
 Rainwater, Wendell 56, 106
 Ralls, Richard Gerald 50, 82, 102, 107
 Ramires, Lewis 33, 56, 66
 Rand, Mary Frances 50, 93, 123
 Reed, John Wesley 44, 82, 84, 86, 89, 90
 Rendlen, Charles 56, 82, 117
 Richardson, I. F. 60, 114
 Richardson, Jane 50, 84, 86, 105, 121
 Riddell, Cyrus 44, 110, 119
 Robb, Barbara Ann 58, 121
 Robb, Louis 58, 113
 Roberts, Bland 60, 68
 Roberts, Joseph 50, 86, 117
 Robinson, Doryce 58, 105, 120
 Rogers, Maribel 44, 105
 Rolf, Harry 44, 102
 Rolston, Georgia 52
 Renk, Helen Maxine 58, 84, 120
 Rosecrans, Wayne 46
 Ross, Claudine 58, 105, 121
 Ross, John 44
 Rutledge, Herbert Wallace 33, 41, 98, 113
 Rutledge, Marjorie 58, 84
 Sadler, Henrietta 58, 89, 90, 123
 Sands, Marvin 44, 106
 St. John, Martha 58, 93, 107, 123
 Schaefer, Charles 58, 102, 107
 Scott, C. J. 38, 102
 Scruggs, Thomas 52, 116
 Sears, Stockwell 50
 Seats, Lavell 44, 102
 Sevier, Bobby Ann 50, 107, 123
 Sevier, Helen May 38, 107, 123
 Shanklin, Edith 60
 Shanklin, Richard 52
 Sharp, Richard 58, 113
 Sharp, Walter 34, 38, 66, 110, 113
 Shaw, Charles A. 44, 110, 113
 Sheerer, Harold 52, 118
 Shepherd, Roy 58, 113
 Shewmaker, Myrtle 40
 Shoemaker, Lawrence 58, 106, 113
 Shouse, T. J. 33, 38, 97, 115
 Simmons, Frank 58, 106, 113
 Simrall, Joe 60, 112
 Singleton, La Verne 58
 Smith, Arnold 50, 83, 84, 106, 107, 117
 Smith, Jay B. 58, 117

Smith, Leslie 58, 113
 Smith, Mildred 33, 38, 84, 86, 88, 121
 Smith, Eugene S. 60
 Solomon, Lynn 34, 38, 74, 81, 82, 84, 88, 89, 90, 96, 117
 Sprague, Albert 52, 112
 Sprague, Doyle 50, 113
 Stanley, Henry 44, 68
 Stewart, John 46
 Stillwagon, Grover 40
 Stoeltzing, Ernst 38, 68, 69, 113
 Stoeltzing, Mildred 33, 38, 81, 123
 Stollings, Virginia Ruth 58, 84, 105
 Strickler, Charles 58, 115
 Stromberg, Rolland 46
 Summers, Buster 58, 107
 Summers, Katherine 58, 105
 Sutton, Clarence 37
 Sword, Dorothy 33, 34, 38, 81, 92, 110, 123
 Taake, Roberta 58, 105, 107, 123
 Tabb, Martha 50, 84, 105, 120
 Tateishi, Masako 38, 88, 96, 105
 Taylor, Arden 50, 115
 Taylor, Katherine 50, 84
 Thomasson, Thelma 38, 81, 101, 105
 Thompson, Mary Elizabeth 44, 105
 Thompson, William 58, 68
 Thorne, Wiley 33, 50, 98, 102, 106
 Tomory, Ernest 58
 Trimble, Dawson 50, 82
 Tripp, Ann E. 52, 120
 Trotter, Joe 33, 38, 81, 82, 86, 89, 90, 97, 106, 110, 117
 Trowbridge, Helen E. 58, 105
 Turner, Nellie 38, 105
 Turner, Olin 44
 Tucker, John 50, 113
 Turpin, William 58, 82, 115
 Underhill, Betty 50, 84, 105
 Unger, Orvil 60
 Van Dyke, Elmer 60
 Van Trump, William 52, 118
 Vaughn, David 60
 Vaughn, Melva Dean 58, 107, 123
 Vickery, Eugene 60
 Vogt, Alfred 44
 Waid, James 58, 119
 Waid, Robert 44, 106, 110, 119
 Walker, Marvin 44
 Wallick, Harold 58, 106
 Walters, Paul, Jr. 60, 118
 Weakly, Mildred 33, 44, 96, 105
 Weinhold, George 44, 86, 106, 117
 Westbrook, Wellington 57, 70, 107, 115
 White, Eric 38, 102
 Williams, Clyde 33, 38, 84, 89, 90, 92, 107, 113
 Williams, Ralph 58, 65, 115
 Williams, Robert 58, 65, 115
 Wilson, George 33, 38, 66, 69, 94, 113
 Wills, Earl 46

Wiltshire, Jean 58, 121
 Winger, Maurice 33, 44, 86, 88, 89, 90, 110, 117
 Winn, Mary Jane 50, 82, 84, 123
 Witthaus, Martha 58, 84, 105, 123
 Woods, Arch 58
 Wren, Nelle L. 40
 Wyant, William 50, 82, 106, 107
 Wyble, Cash 38, 102
 Yates, Ronald 50, 92, 115
 Young, Margaret 38, 105
 Zinn, Alma 52
 Zumwalt, Ralph 38, 102

FACULTY

Beamer, George C. 18, 23
 Bowles, R. E. 18, 64
 Bowman, Mrs. 19
 Bruner, Wilbur 18
 Davidson, George D. 18
 Davis, John E. 18, 22, 97
 Denton, B. Edward 18
 Derwacter, Fredrick M. 18
 Edson, Frank G. 18, 98
 Elmore, C. J. 19, 96
 Fruit, John Phelps 19
 Godfriaux, Henri 19, 64
 Grosch, David 19, 107
 Harvey, P. Caspar 19, 89, 90
 Herget, John F. 16
 Hester, H. I. 19, 102
 Isley, Thurston 19
 Lindsey, Ruth 17
 Moon, Allen J. 17
 Pugh, Ulma R. 19, 88
 Rice, Virginia D. 20, 83
 Smith, W. Holt 20, 86, 88
 Sullivan, J. B. 20
 Thomas, Olive 20, 96
 Van Dyke, C. O. 20
 Van Trump, Joseph 20, 97

Brown, Mrs. Visa 24
 Carlin, Opal 22
 Davidson, Ralph 24
 Davidson, Mrs. Ralph 24
 Early, H. B. 22
 Hester, Mrs. H. I. 24
 Keller, Mrs. Elsa 24
 Lewis, Mrs. James 22
 Millen, Mary Ruth 22
 Prince, C. J. 22
 Stanley, Mrs. Grace 24
 Utz, Miss Irbie 24

ORGANIZATIONS

Aeons 81
 Alpha Phi Omega 82
 Alpha Psi Omega 83
 Alpha Zeta Pi 100
 Band 106
 Basketball 70
 Beta Lambda 96
 Beta Sigma Omicron 120
 B. S. U. 101
 Cooperative Book Store 26
 Football 65
 Forensics 90
 Freshmen 53
 Interfraternity Council 110
 International Relations Club 86
 "J" Club 69
 Juniors 41
 Kappa Alpha 112
 Men's Biology Club 96
 Men's Glee Club 107
 Ministerial Group 102
 Panaegis 81
 Pan-Hellenic Council 111
 Phi Gamma Delta 114
 Pi Gamma Mu 88
 Pi Kappa Delta 89
 Seniors 35
 Sigma Nu 116
 Sigma Pi Sigma 97
 Sigma Tau Delta 92
 Sophomores 47
 Special Students 39
 Student 93
 Student Assistants 33
 Student Government 34
 Tatler 94
 Tennis 77
 Theta Chi Delta 98
 T. N. T. 122
 Track 74
 William Jewell College Christian Association 104
 William Jewell Players 84
 William Jewell Press 23
 Women's Glee Club 107
 Y. W. A. 105
 Zeta Chi 118

MISCELLANEOUS

Administrative Personnel 22
 Board of Trustees 11
 Campus Views 13
 Carnival Queen 28

Contents 6
 Dedication 5
 Dramatic productions 85
 Faculty, informally 21
 Foreword 4
 Girls Sports 76
 High School Queens 108
 Homecoming 63
 Homecoming Queen 62
 In Memoriam 8
 Melrose Hall 24
 New Ely Hall 24
 Popularity Personalities 29
 Students informally 30
 Tatler Review Queen 12
 Unphotographed Freshmen 60
 Unphotographed Juniors 46
 Unphotographed Seniors 40
 Unphotographed Sophomores 52
 Unphotographed Special Students 40

ADVERTISERS

A. L. McGinness 131
 Berkley Baptist Divinity School 134
 Brant Drug Store 130
 Burger-Baird Engraving Co. 137
 Caledonia Greenhouses 131
 Cardinal Auto & Electric Supply 135
 Central West Utility Co. 135
 Church-Archer Funeral Home 130
 Church Beauty Shop 134
 Citizens Bank 135
 Clay County Abstract Co. 130
 Clewiston Motor Company 131
 Colonial Hotel 120
 Co-op Book Store 138
 Crozer Theological Seminary 134
 De Cloud Studio 127
 Eastern Baptist Theological Seminary 132
 Electric Shoe Shop 130
 First National Bank 129
 Green Jewelry Co. 130
 Howard C. Chrisman 131
 H. R. Banks Lumber Co. 128
 Hughes-McDonald Dry Goods Co. 130
 James Costello Lumber Co. 130
 Judson Press 134
 K. C. Baptist Theological Seminary 133
 K. C. Life Insurance Co. 128
 K. C. Power & Light Co. 139
 K. C. School of Law 134
 K. C. Western Dental College 130
 Kearney Trust Co. 135
 Knights of Pythias 130

Liberty Chamber of Commerce 135
Liberty Chronicle 128
Liberty Flower Shop 128
Liberty Marketing Co. 130
Liberty Monument Co. 131
Liberty Tribune 130
McArthur's Store 131
Mo. Gas & Electric Service Co. 131
National Commercial Co. 134
Plaza Theatre 135

Progressive Shoe Shop 135
Schaeffer Motor Co. 130
Shell Service Station 128
Southwestern Baptist Theological Seminary 134
Standard Oil Service Station 135
Tog'ry Shop 135
Union Pacific Stages 129
W. B. Schneider Meat Co. 128
William Jewell College 136
William Jewell Press 126