

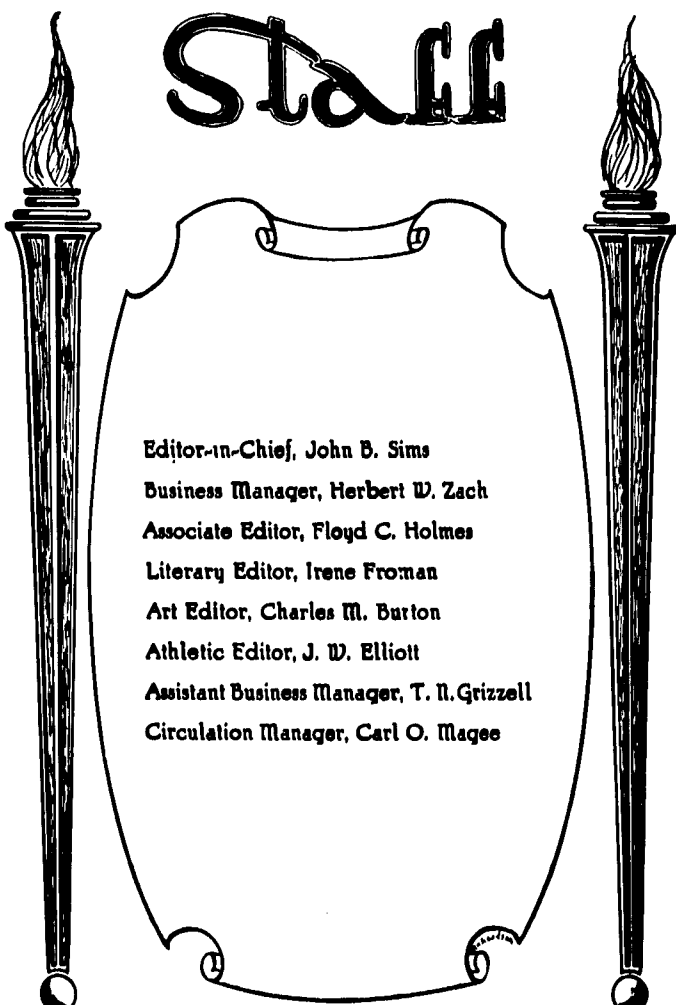
Engravings
Planned and Executed by
Baird Co. Engravers
KANSAS CITY
MISSOURI
Printed by the
W^m Jewell Press
LIBERTY, MISSOURI

The 1924

Tatler

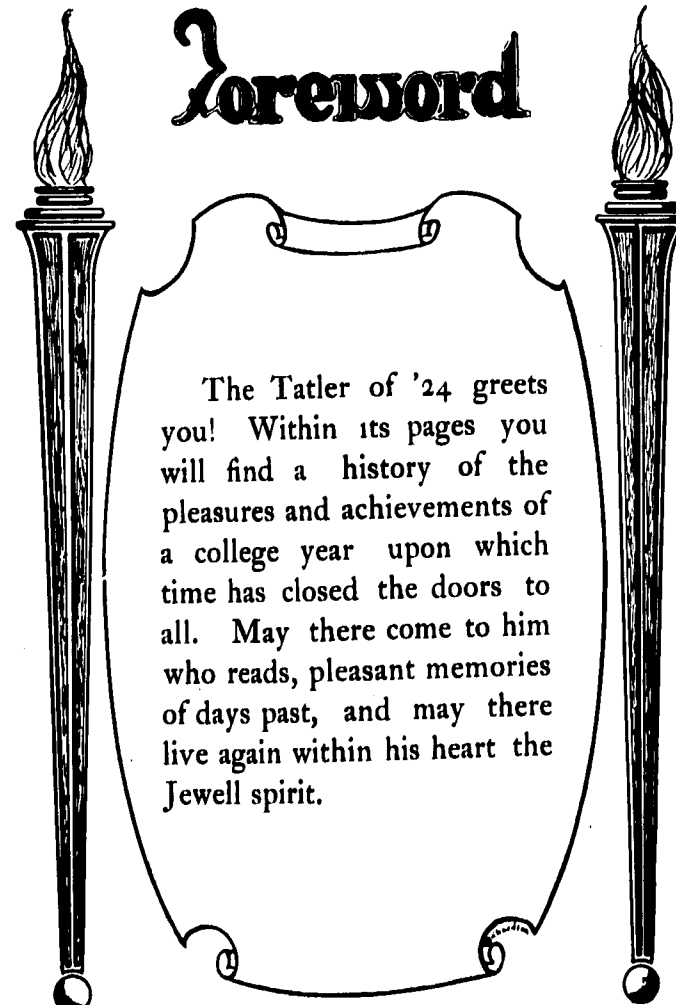
PUBLISHED BY THE
JUNIOR CLASS
of
WILLIAM JEWELL
COLLEGE
LIBERTY MISSOURI
*Seventy-fifth Anniversary
Number*

Staff

A decorative scroll with a scalloped border, held up by two tall, slender torches with flames at the top. The scroll contains a list of staff members.

Editor-in-Chief, John B. Sims
Business Manager, Herbert W. Zach
Associate Editor, Floyd C. Holmes
Literary Editor, Irene Froman
Art Editor, Charles M. Burton
Athletic Editor, J. W. Elliott
Assistant Business Manager, T. H. Grizzell
Circulation Manager, Carl O. Magee

Foreword

A decorative scroll with a scalloped border, held up by two tall, slender torches with flames at the top. The scroll contains a foreword.

The Tatler of '24 greets you! Within its pages you will find a history of the pleasures and achievements of a college year upon which time has closed the doors to all. May there come to him who reads, pleasant memories of days past, and may there live again within his heart the Jewell spirit.

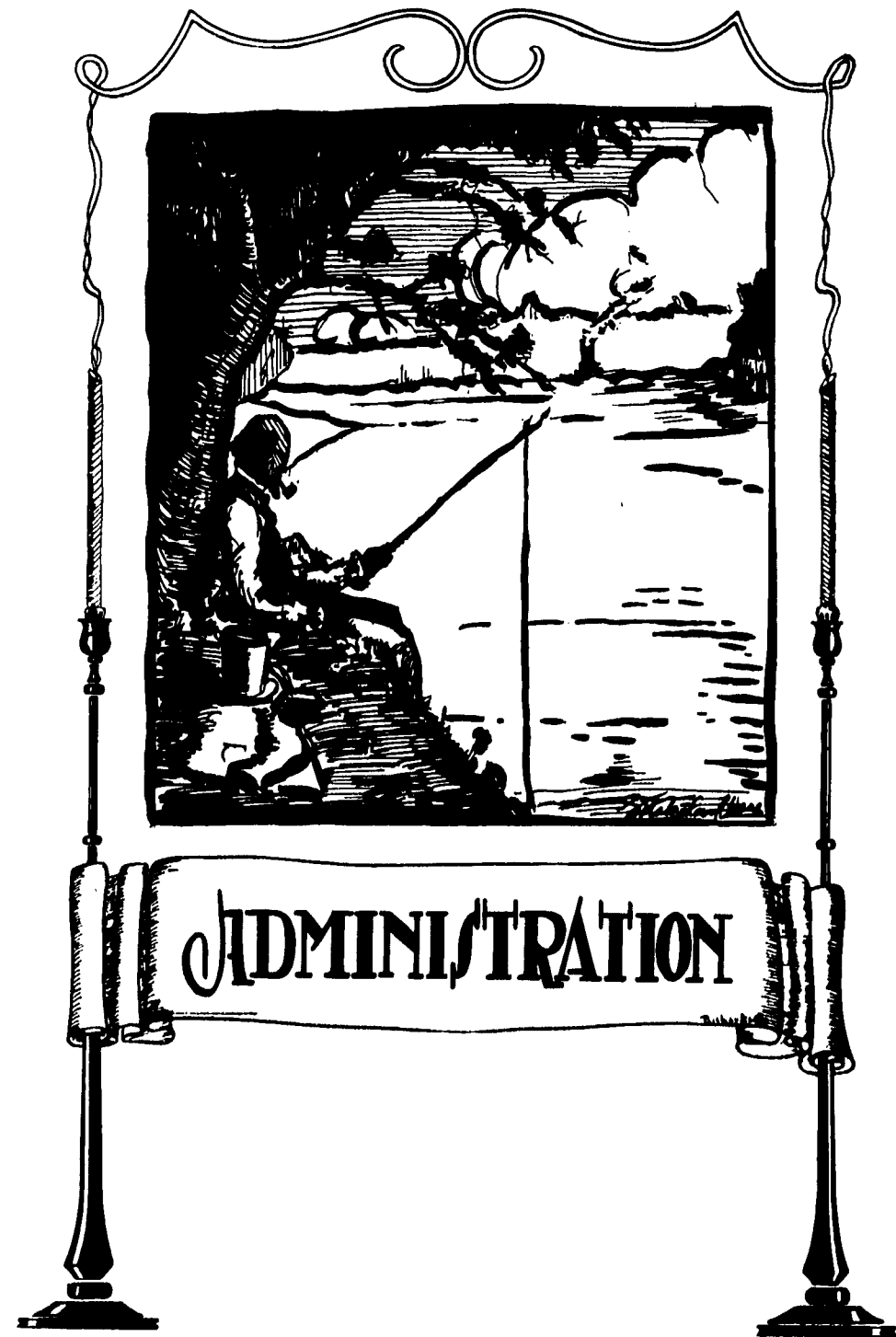
Dedication

TO one who by his broad and kindly sympathies, and keen insight into student problems, has, both in the classroom and on the campus, made the way just a little easier and happier for us all; to this genial friend, scholar and teacher, Dr. W. D. Baskett, the class of '25 loyally dedicates this Tatler of 1924.



Order Books

- I. Administration
- II. Classes
- III. Athletics
- IV. Fraternities
- V. Organizations
- VI. Literary





H. C. WAYMAN

A. M., Th. D., D. D., D. Litt.

A. M., Georgetown College, 1904. D. D., Georgetown College, 1910. Th. D., Southern Baptist Theological Seminary, 1912. D. Litt., Oxford University 1921.
President William Jewell College.



JOHN P. GREENE
 A. M., D. D., LL. D.,
 A. M., LaGrange. D. D., Southern Baptist Theological Seminary. LL. D., Col-
 gate University. President Emeritus William Jewell College.



RICHARD PRICE RIDER
 A. M.
 A. M. Shurtleff College 1893. Emeritus Pro-
 fessor of Latin.



JAMES G. CLARK
 L. L. D.
 L. L. D. Baylor University 1880. Emeritus
 Professor of Mathematics.



JOHN P. FRUIT
 A. M., Ph. D.
 A. M. Bethel College, 1891. Ph. D. Leipsic,
 1895. Professor of English Language
 and Literature.



HARRY G. PARKER
 A. M., Ph. D.
 A. M., William Jewell, 1893. Ph. D., Harvard,
 1900. Professor of Chemistry.



ROBERT R. FLEET
A. M., Ph. D.
A. M., University of Missouri, 1900. Ph. D.,
Heidelberg, 1903. Professor of Mathe-
matics.



WILLIAM D. BASKETT
A. M., Ph. D.
A. M., Central College, 1901. Ph. D., Chicago,
1916. Professor of Modern Language.



ERDMANN SMITH
A. B., A. M., LL. D.
A. B., Oklahoma Baptist University, 1907. A.
M., Oklahoma Baptist University, 1909.
LL. D. Oklahoma Baptist University,
1920. Professor of Education.



LORENZO D. WEYAND
A. B., B.D., A. M., Ph. D.
A. B., Grand Island College, 1906. B. D., Ro-
chester Theological Seminary, 1910. A.
M., Chicago, 1914. Ph. D., Chicago, 1919.
Professor of Sociology.



E. W. MOUNCE
B. S., A. B.
B. S. University of Missouri, 1920. A. B., Uni-
versity of Missouri, 1921. Professor of
History.



FORREST C. FEEZOR
A. B., Th. M.
A. B., Wake Forest College 1920. Th. M., South-
ern Baptist Theological Seminary 1923.
Professor of Bible.



JOHN E. DAVIS
A. B.
A. B., William Jewell, 1907. Professor of
Physics.



CLARENCE J. ELMORE
A. B., A. M., Ph. D.
A. B., University of Nebraska, 1895. A. M.
University of Nebraska, 1896. Ph. D.,
University of Nebraska, 1915. Professor
of Biology.



ARTHUR G. BYRNS
B.S., A. M.

B. S., Purdue University, 1898. A. M., University of Kansas 1920. Professor of Modern Language.



P. CASPAR HARVEY
A. B., A. M.

A. B., William Jewell, 1910. A. M., William Jewell, 1911. Professor of English Composition.



ROBERT EARL BOWLES
A. B.

A. B. William Jewell, 1912. Director of Athletics



GEORGE H. WHITE
A. B.

A. B. William Jewell, 1920. Professor of Latin.



HARRY E. COOPER

Mus. Doc., A. A. G. O.
Bush Conservatory, American Guild of Organists. Professor of Music.



WALTER O. WALKER
A. B.

A. B., William Jewell 1919. Assistant Professor of Chemistry.

In Memoriam



DR. JAMES G. CLARK
Born June 23, 1837
Died April 18, 1924



PROFESSOR SEWELL E. SCOTT
Born Sept. 1, 1892
Died July 14, 1923

Views of
William Jewell
College



Liberty, Missouri



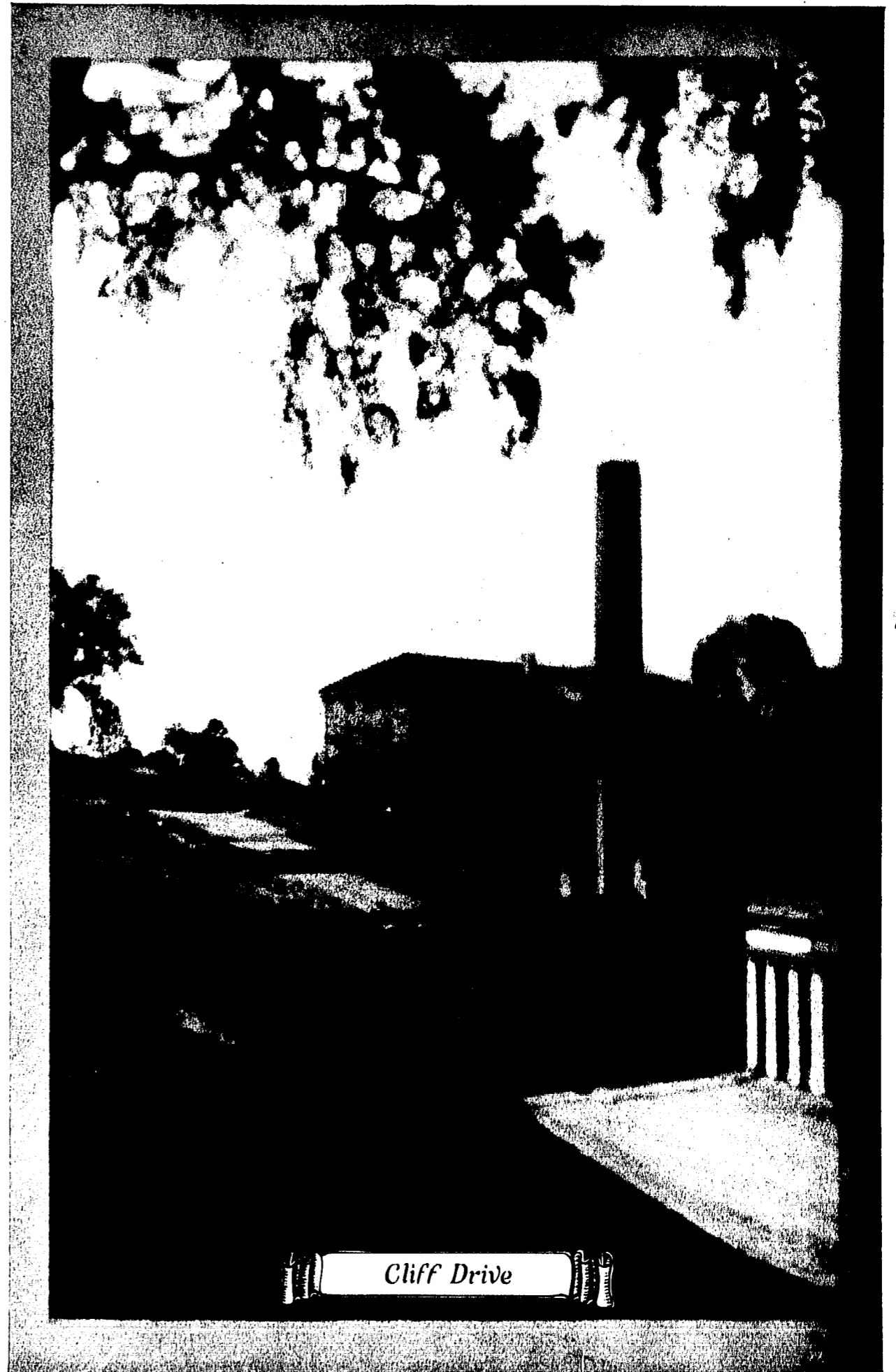
Jewell Hall



Looking South



The Gymnasium



Cliff Drive



"How steep the stairs within Kings' houses are."

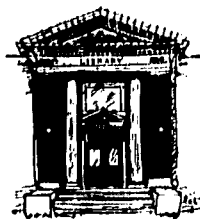


*"While behind all, erect as ever,
Undismayed amid the rapids, amid the irresistible and
deadly urge
Stands a helmsman with brow elate and strong hand".*



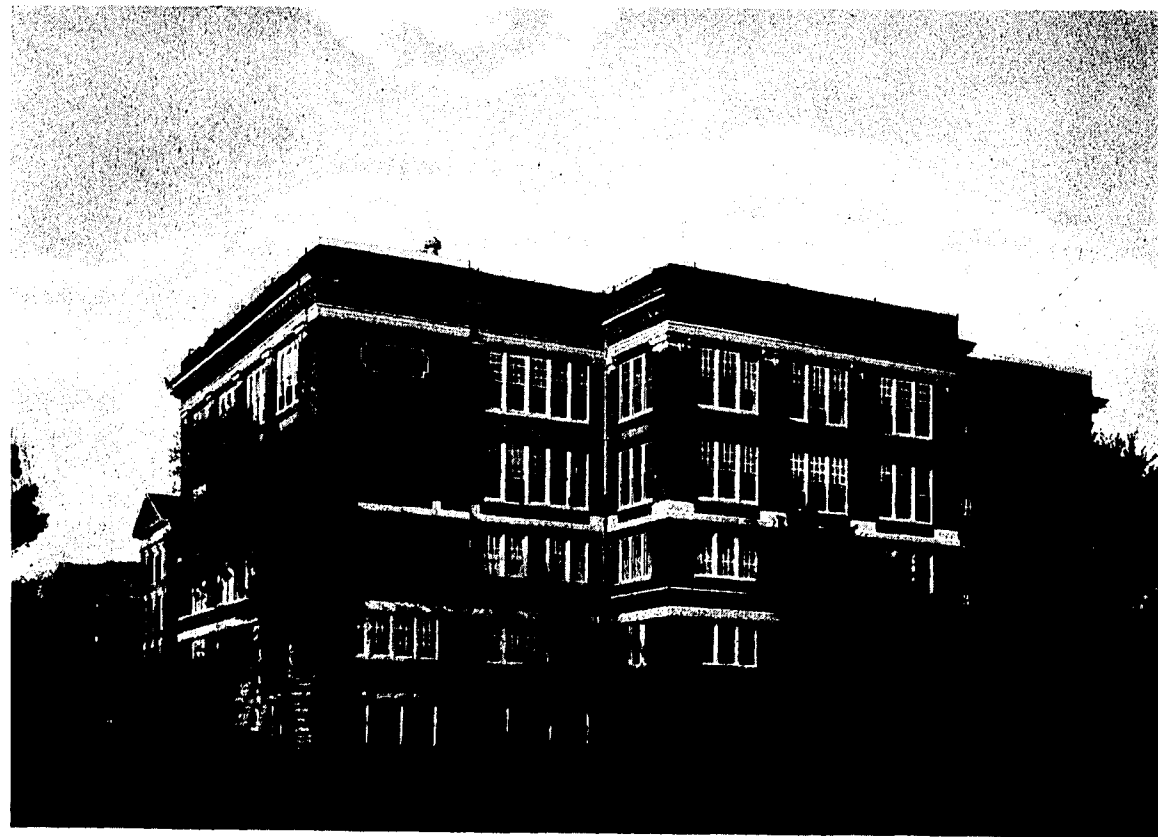


*"By all the world contributed—freedom's and law's and
thrift's society,
The crown and teeming paradise, so far, of times accum-
ulation,
To justify the past".*



*"A worship new I sing
You captains, voyagers, explorers, yours
You engineers, you architects, machinists yours
You, not for trade or transportation only,
But in God's name and for thy sake, O Soul".*





*"Thy offspring towering e'er so high, yet higher Thee above
all towering".*



"These sacred walls, covered with ivy which has steadily crept upward through the years, even as the influence of the rooms it adorns has ramified through personalities and pointed them skyward to eternal fame".

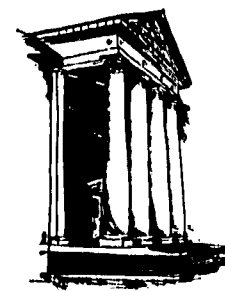




*"All comes by the body, only health puts you rapport with
the universe.
Produce great Persons, the rest follows".*



*"Here the doings of men correspond with the broadcast
doings of the day and night;
Here is what moves in magnificent masses careless of
particulars;
Here are the roughs, beards, friendliness, combativeness,
the soul loves".*

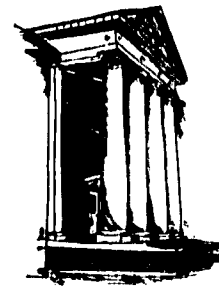




*You air that serves me with breath to speak!
You objects that call from diffusion my meanings and give
them shape!
You light that wraps me and all things in delicate equable
showers!
You paths worn in irregular hollows by the roadsides
I believe you are latent with unseen existences, you are
so dear to me".*

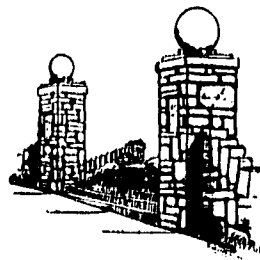


*"Something like home, that is not home, like alone that
is not alone, is to be wished and only found in a Friend, or
in his house".*





"Oh Lord, how manifold are thy works, in wisdom. Thou hast made them all, the earth is full of thy riches".



SENIORS





MCINTIRE, CARL A. *Kansas City*
 Bible
 Pi Kappa Delta; Glee Club, '21, (Mgr.) '22, '23, '24; Buttinsky; Student Senate '22; Bus. Mgr. *Student* '22; Associate Editor *Tatler* '23; President Senior Class.

AUSTIN, JAMES A. *Kansas City*
 Chemistry
 Khem Club; Chemistry Assistant
 '24.

BARTON, CECIL *Liberty*
 French
 Sigma Nu; J Club; Aeons; Football
 '20, '21, '22, '23.

BENNET, BASIL R. *Forrest City*
 Sociology
 International Relations Club.

BYWATERS, DAVID *Camden Point*
 History
 Kappa Sigma; Student Senate,
 '23; Assistant Business Manager
Tatler, '23; Treasurer Senior Class.

CAMPBELL, RUTH *Liberty*
 History and Political Science.
 Iota Pi; President Girls' Student
 Gov't. Association.





CANADAY EMMET J. *Carrollton*
 Mathematics
 Glee Club, '21, '22, Pres., '23; But-
 tinsky; Vice-President Sophomore
 Class; President Junior Class; Stu-
 dent Reporter; *Tatler* Staff, '23.

COGSWELL, John E. *Independence*
 History and Political Science
 Kappa Sigma; Aeons; Business
 Manager *Tatler*, '23; Football, '20,
 '21, '23; Basket Ball, '21; Baseball,
 '21, J Club; Assistant Football
 Coach, '22.

CONE, DAVID A. *Hemple*
 Economics
 Sigma Nu; Keats Club; Aeons; *Tat-*
ler staff, '23; Vice-President Jun-
 ior Class; Assistant Librarian.

CREEK, ALICE *Liberty*
 Girls' Glee Club; W. J. C. A. Cab-
 inet.

DAVIS, ENNIS *Brashear*
 History and Political Science
 Phi Gamma Delta; Glee Club, '21,
 Manager, '23; Student Senate, '23,
 Business Mgr. *Student*, '23; Band.

DOW, ERNESTINE *Liberty*
 French
 T. N. T.; Girls' Glee Club, '21, '23,
 Pres., '24; Secretary Senior Class.

EVANS, NAN *Kansas City*
 History and Political Science
 Student Staff, '24; *Tatler* Staff, '23.

FROMAN, IRENE *Liberty*
 Mathematics
 Iota Pi; Scribblers; *Tatler* Staff,
 '24; Student Staff; W. J. C. A.
 Cabinet.

GILL, KATHYRN *Liberty*
 Mathematics and Education.
 W. J. C. A. Cabinet.

HALL, LUCILE *Liberty*
 History and Political Science.
 T. N. T.; Girls' Glee Club, '23, '24;
 Vice-Pres. G. S. G. A.





HAMRICK, EARL J. *Hillsboro*
Sociology.
Kappa Sigma; Pi Kappa Delta; Intercollegiate Debate, '22, '23, '24; President Sophomore Class; International Relations Club; Board of Control of Student Publications.

HAYS, ORA *Marshall*
History and Political Science.

HILL, W. D. *Norborne*
English.
Scribblers; *Tatler* Staff, '23; *Student* Staff; Editor of *Student*, '22; International Relations Club.

HIRST, LELAND BANE *Alliance, Nebr.*
Education.
Phi Gamma Delta.

HOLBERT, F. A. *Ewing*
History and Political Science.
Philomathian; International Relations Club; *Student* Staff, '22, '23.

HOWARD, HARRY NICHOLAS *Excelsior Springs*
History and Political Science.
Zeta Chi; Keats Club; Pi Kappa Delta; Intercollegiate Debate, '22, '23, '24, Capt. Debate Team, '23, '24; Student Senate, '23.

INGLE, ALPHA, JR. *Salina, Kan.*
Chemistry.
Keats Club; Khem Club; Philomathian; Track, '22, '23; Treasurer Sophomore Class, '23.

JOHNSTONE, BERTHA *Kansas City*
Sociology.
T. N. T.; Scribblers; W. J. C. A. Cabinet.; G. S. G. A.

KEOHANE, ROBERT E. *Liberty*
History and Political Science.
Keats Club; Scribblers; Editor *Student*, '23; International Relations Club; Board of Control of Student Publications.

LEWELLEN, RUSSELL R. *De Witt*
English,
Student Senate; *Student* Staff; Judson-Peck.





McKISSACK, R. W.
Mathematics

Liberty

MANLOVE, J. A.
Chemistry
Zeta Chi; Khem Club; Chemistry
Assistant, '21, '22.

Liberty

PARVIN, JULIAN
Physics

Avondale

PIERCE, WALKER
History
Phi Gamma Delta; *Student Staff*,
'24.

Armstrong

POTTER, MILDRED
Chemistry
Philomathian.

Palmyra

RANDALL, ULYSSES S.
History and Political Science
Buttinsky; Student Senate, '22;
Student Staff; Freshman Debate
Team, '22.

Liberty

ROGERS, H. P.
History

Lathrop

SCHUMAN, VERNE B.
Greek
Zeta Chi; Keats Club; Philomathian.
Pres. '23; Vice-President Senior
Class.

Rolla

SHOEMAKER, R. A.
Chemistry
Kappa Sigma; Khem Club; Foot-
ball, '20, '21, Capt., '22; Capt. All
State Mythical Eleven, '22; Track,
'20, Capt., '21; J Club.

Liberty

SMITH, JOHN D.
History

Worland, Wyo.





SPENCER, RUTH *Hannibal*
History and Political Science.
Girls' Glee Club, '24.

SWIFT, SELBY *Mexico*
Sociology.

WALKER, RUTH ANNE *Liberty*
Education.
Scribblers; Philomathian; Girls'
Glee Club, '21; *Student Staff*, '24

WELSH, HELEN *Liberty*
History and Political Science.
T. N. T.

WOOD, C. C. *Kansas City*
History and Political Science
Sigma Nu; Aeons; Student Senate,
'24; Football, '21, Capt. '22, '23;
Capt. All State Mythical Eleven,
'22; Basketball, '22, '23, '24; Track,
'21, '22, Capt. '23.



WRIGHT, EARL *Liberty*
History and Political Science.
Physics Assistant, '24. Interna-
tional Relations Club.

FRANKLIN, JOHN SHADE *Des Moines, Ia.*
Latin.
Glee Club, '21; Student Volunteers;
Student Staff, '21; Ass't. Business
Mgr. *Student*, '22; Treasurer Soph-
omore Class; Track, '21, '22; "J"
Club; William Fitch Prize, '22.

The Bird and I

See you the bird that sits on yonder limb
In calm repose and with a stately poise
No nation's mighty monarch e'er enjoys?
Distress and grief do not abide with him,
Nor does he have denied one little whim;
And in his perfect song he ne'er employs
The borrowed tongue with which the bard alloys
His own that he might sing a pleasing hymn.

Yet, though he has what kings and bards desire,
I would not give my life of toil and pain
For all his sweet content and noble pride;
For he cannot for greater things aspire,
But he must live his life without refrain
And ever in oblivion abide.

—R. R. Lewellen

JUNIORS





King, Dudley T. *Houston Texas*
 Chemistry
 Kappa Alpha; President Junior Class; Football, '22, '23;
 Basket Ball, '22, (Capt.) '23; Track, '22, '23; J Club.

Arnold, Lois Belle *Liberty*
 English
 Philomathian; Student Volunteers;
 W. J. C. A. Cabinet.

Barr, Lawrence H. *Excelsior Spgs.*
 History and Political Science
 Philomathian; International Relations Club.

Bartholomew, Jess M. *Rock Port*
 Physics
 Physics Assistant '23-'24; Ye Sons of Gutenberg.

Boydston, Evelyn *Dearborn*
 Education
 Girls' Glee Club.

Boydston, Lucile *Dearborn*
 Education
 Girls' Glee Club.

Brown, Millard I. *Milan*
 Chemistry
 Zeta Chi; Ye Sons of Gutenberg.





Burton, Charles M. *Liberty*
 Chemistry
 Kappa Sigma; Khem Club; Glee
 Club '22, 23, 24; *Tatler* Staff '24;
 International Relations Club;
 Chemistry Assistant '24; Vice-
 President Junior Class.

Church, James M. *Liberty*
 Chemistry
 Khem Club '23, (Pres.) '24; Glee
 Club '22, 23, 24; Chemistry Assist-
 ant '24.

Church, Mrs. Mary A. *Liberty*
 History
 G. S. G. A. Cabinet; Philomathian.

Cloonan, C. B. *Liberty*
 History and Political Science
 Philomathian.

Coffman, Harold G. *Liberty*
 History
 International Relations Club.

Coffman, Effiemarie *Liberty*
 French
 Philomathian; Student Volunteer.

Davis, Ralph W. *Oak Grove*
 History and Political Science
 Philomathian.

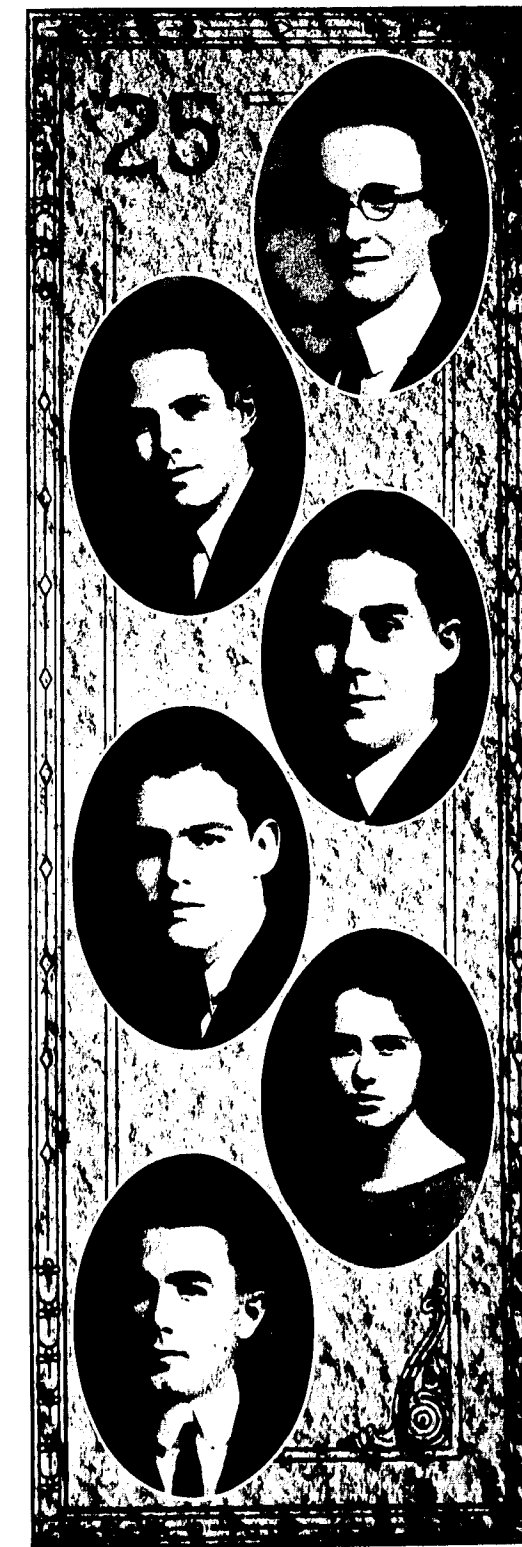
Dulin, John E. *Glen Rock, Wyoming*
 Chemistry
 Kappa Sigma.

Edson, Frank G. *St. Joseph*
 Chemistry

Elliot, J. W. *Grayson*
 History
 Kappa Alpha; Football '21, '22, '23,
 (Capt.-elect '24); J Club; *Tatler*
 Staff '24.

Elmore, Mary E. *Liberty*
 Biology

Foster, L. A. *Livonia*
 History and Political Science
 Philomathian; International Re-
 lations Club.





Foster, W. I. *Livonia*
 Physics
 Philomathian.

Griffin, Clayborne S. *Mexico*
 Bible
 Basket Ball '23 '24, (Capt.-elect '25);
 J Club; Y. M. C. A. Cabinet.

Grizzell, T. N. *Salisbury*
 History and Political Science
 Sigma Nu; Glee Club '23, '24; *Tat-
 ler Staff* '24.

Holmes, Floyd C. *Hemple*
 History and Sociology
 Zeta Chi; Keats Club; International
 Relations Club; Scribblers; Phil-
 omathian; Student Senate '24; *Tat-
 ler Staff* '24; *Student Staff*; Buttin-
 sky; Debate, '24; Ye Sons of Guten-
 berg.

Holland, I. C. *Rio de Janeiro, Brazil*
 History and Political Science

Hensley, Clarence W. *Kansas City*
 History and Political Science
 Philomathian; International Re-
 lations Club.

Justus, Ernest M. *Trenton*
 Physics
 Phi Gamma Delta; Football '21,
 '22, (Capt.) '23; Track '22 '23; J
 Club; Assistant in Physics '24

King, Dudley T. *Houston, Texas*
 Chemistry
 Kappa Alpha; President Junior
 Class; Football '21, '22, '23; Bas-
 ket Ball '21, '22, (Capt.) '23; Track
 '22, '23, '24; J Club.

Lessly, Stiles *Higbee*
 English
 Judson-Peck Society; Y. M. C. A.
 Cabinet; Philomathian; Ye Sons of
 Gutenberg.

McComas, Blanche *Liberty*
 French
 T. N. T.

McGrath, Roy V. *Mountain View*
 Chemistry
 Kappa Alpha.

McQuillan, Louis E. *Hamilton*
 Mathematics and Chemistry
 Mathematics Assistant '24





Mohler, J. G. *Springfield*
History
International Relations Club.

Mohler, S. Nill *Springfield*
Chemistry
Glee Club '24; International Relations Club.

Moran, L. G. *Liberty*
English

Mulvania, M. A. *Phelps City*
Chemistry
Khem Club; Philomathian; Chemistry Assistant '24.

Osborn, Howard *Clifton Hill*
Physics
Sigma Nu; Assistant Librarian.

Petree, Louis G. *Kidder*
Chemistry
Khem Club; Student Senate '24.

Philips, Margaret L. *Liberty*
Education
Philomathian.

Southard, E. F. *Bowers Mill*
Latin
Kappa Sigma; Football '16 '22, '23;
J Club.

Sims, John B. *Carrollton*
Sociology
Student Staff '22; Bus. Mgr. Student '23; Editor *Tatler* '24; Student Senate '23; Assistant Librarian; Buttinsky; International Relations Club.

Siple, Raymond H. *Coffey*
Chemistry
Buttinsky.

Tapp, Frances *Chandler*
Mathematics

Wade, Fred H. *Liberty*
Sociology
Glee Club '23, '24.

Zach, Herbert W. *Hamburg, Iowa*
Sociology
Zeta Chi; Bus. Mgr. *Tatler* '24; Philomathian; International Relations Club.



Wanderlust

My heart is afire, and the call to go
Grows louder and stronger, it will not be still.
I must see where the palms and olives grow,
I must climb the top of the highest hill.

To follow the trails daring souls have made,
To mark through the wilderness paths of my own,
To lie by night in the earth's deep shade,
Tracing the stars in their upper zone.

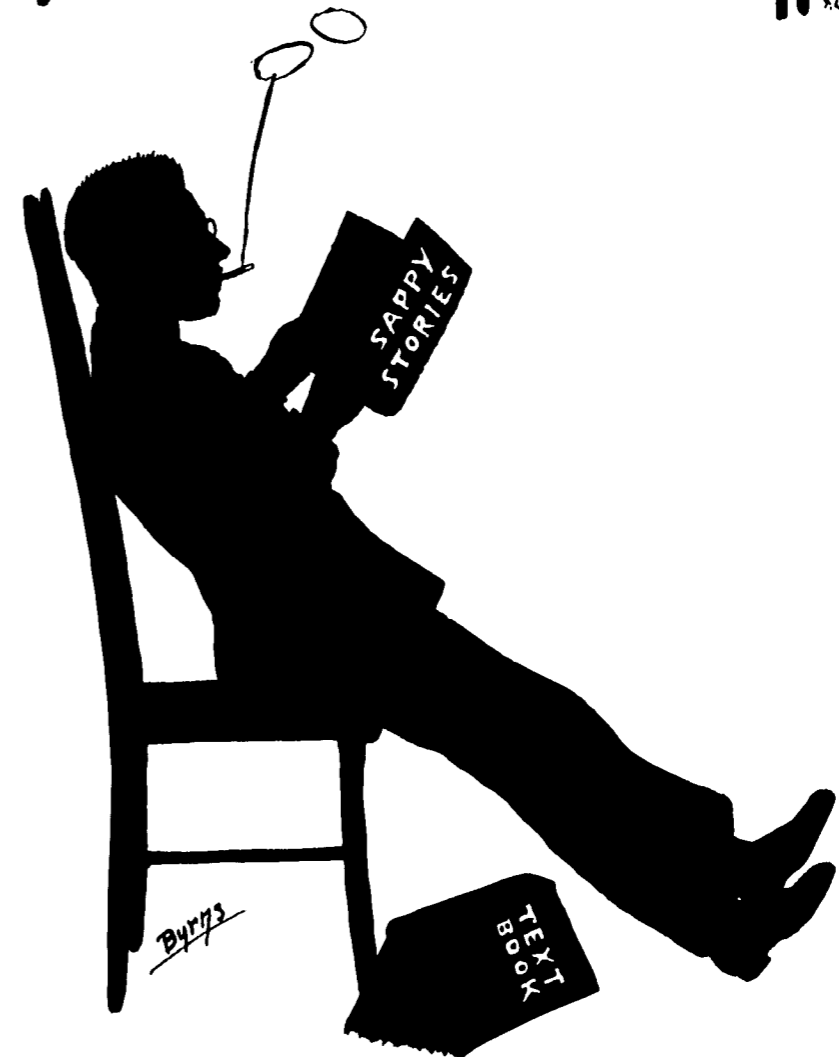
Sailing through straits of the southern seas,
Seeking my treasure when trade winds blow,
Searching the isles of the western keys—
These are the things my heart must know.

Then away, my heart has but one desire,
Adventure, adventure, and far strange lands,
The smouldering coals have become a fire,
The clay has escaped from the moulder's hands.

O winds of the desert, winds of the sea,
Lead on, I shall follow. The far lights gleam
I am coming, O hills. Life is to be
More than I asked for, more than I dreamed.

—Blanche File, '26

SOPHOMORES





Noel, T. Leon

Lentner

OFFICERS

President
Vice-President
Secretary
Treasurer

T. LEON NOEL
 N. W. SEDERBERG
 ARDELLA SMOOT
 FRANK TRIMBLE

Alexander, Jerome Dougherty
 Liberty
 Anderson, A. F.
 Liberty

Anderson, J. L.
 Jennings, La.
 Bailey, Virginia
 Trenton
 Been, Walter
 St. Louis

Cain, Dennis F.
 Caruthersville
 Cain, Charles Floyd
 Caruthersville
 Carlisle, J. V.
 Williamstown

Chapman, Nancy L.
 Liberty
 Carmichael, Darrell A.
 Shelbina
 Chenoweth, Roma
 Liberty

Chewning, Bert S.
 Harrisonville
 Chrisman, Clarence G.
 Liberty
 Church, Sam D.
 Liberty

Clark, John E.
 Ada, Kansas
 Clawson, Elmer R.
 Kansas City





Codor, Ralph V.
La Belle
Connor, I. W.
Springfield

Dawson, John W.
Jefferson City
Day, Katherine
Liberty
Day, R. Maxwell
Dearborn

Dick, Mallie
Edgerton
Doherty, Mary Lee
Lathrop
Dorsey, Pauline
Norborne

Fisher, Kizzie Belle
Gilliam
Fleet, James Ryland
Liberty
Fristoe, Frank H.
Carthage

Gardner, Charles E.
Norborne
Godfriaux, E. O.
Liberty
Godfriaux, Marcel R.
Liberty

Gonzalez, Nicasio Gregory
San Louis Potosi, Mexico
Gordon, Paul G.
Kansas City

Graves, Helen
Neosho
Hansford, Harold E.
Carthage

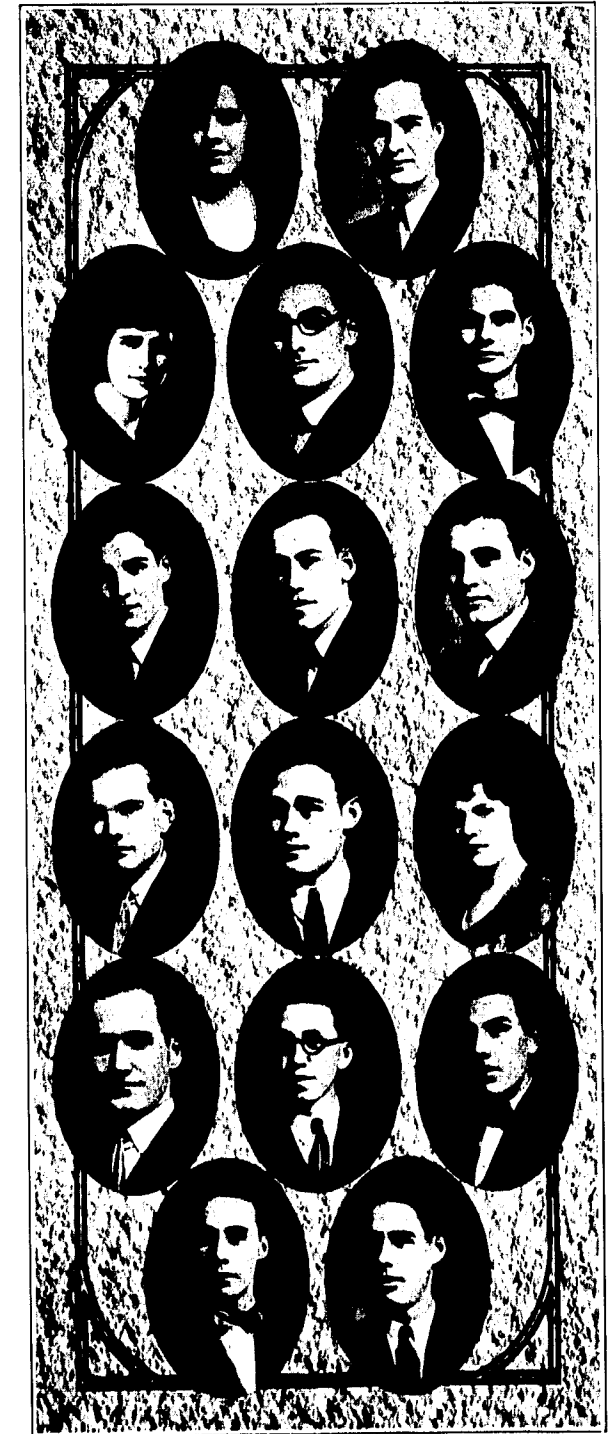
Hart, Thelma B.
Liberty
Harvey, Theo. V. L.
Monett
Hayes, George C.
Hannibal

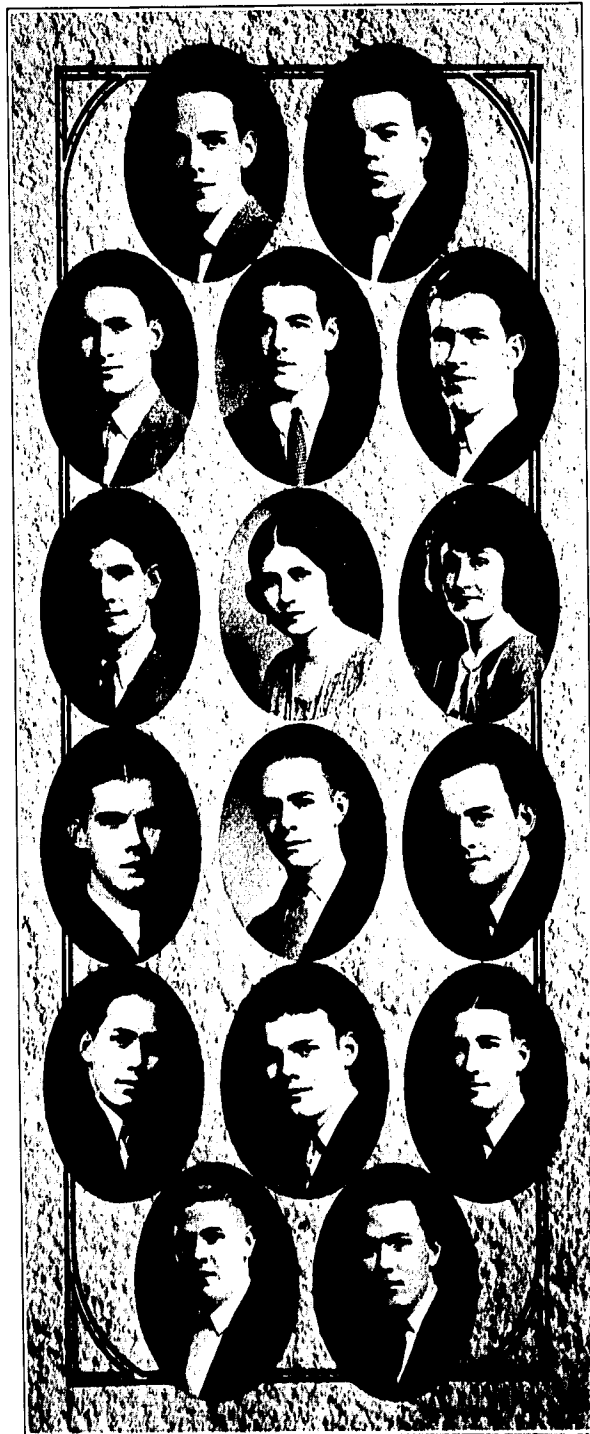
Hier, Elvet T.
Marceline
Hill, Robert A.
Liberty
Hirni, Paul R.
Rockville

Hodgin, Harold H.
Fairfax
Johnson, Elza V.
Carthage
Johnstone, Emma Jean
Kansas City

Lamb, Joseph C.
East St. Louis, Ill.
Lands, Alonzo M.
Carrollton
Leach, Howard E.
Kansas City

Mack, Dee Earl
Odessa
McAllister, E. N.
Houston, Texas





McDaniel, Kirk
 Kansas City
 Marshall, J. Farris
 Richmond

Miller, Eldon S.
 Excelsior Springs
 Moore, Elton
 Paris
 Moore, Bernard L.
 Liberty

Moor, T. Millard
 Independence
 Newman, Mrs. H. R.
 Liberty
 Norcross, Mildred E.
 Liberty

Osborn, R. R.
 Gallatin
 Palmer, J. Harold
 Chillicothe
 Partee, William E.
 Vandalla

Pettus, Clay B.
 Belton
 Pierce, David A.
 Armstrong
 Reed, Amil M.
 Linneus

Ridgeway, Roy D.
 Brookfield
 Sears, Myron
 Macon

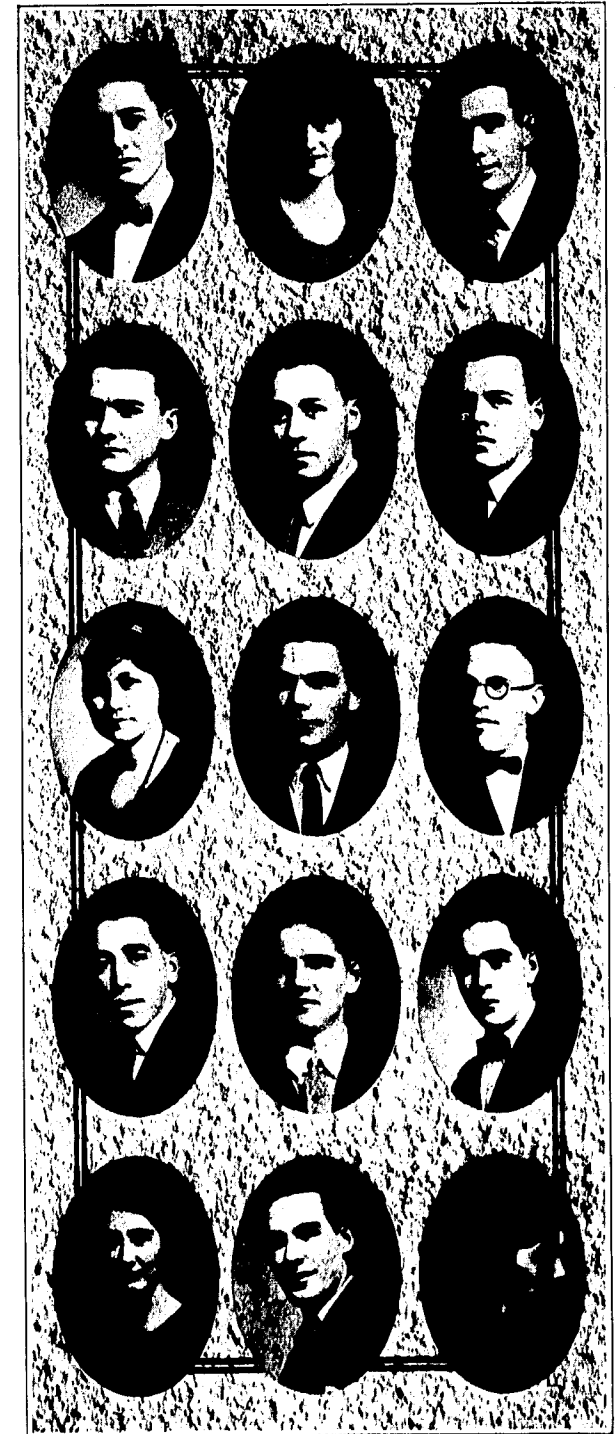
Shafar, W. H.
 Liberty
 Shaw, Mary Ethel
 Liberty
 Sherman, Royal V.
 Rocky Ford, Colo.

Sheets, Don H.
 Nevada
 Stapleton, Loren C.
 Gallatin
 Stuart, Meriwether L.
 Liberty

Stonum, Opal B.
 Elmira
 Sturges, W. Eugene
 Carrollton
 Sweeny, Harold M.
 Eufaula, Okla.

Tebow, Robert G.
 Fort Collins, Colo.
 Varner, Everette
 Odessa
 Wainscott, George E.
 Kansas City

Walker, Leona
 Liberty
 Williams, Byron
 Brookfield
 Woolfolk, Daisy
 Liberty

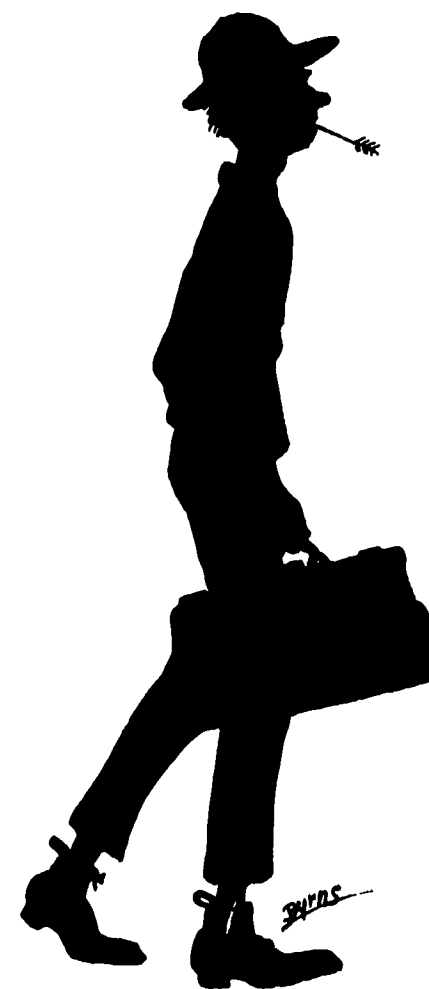


How Long?

I watched a golden leaf in its descent;
I watched its every movement as it fell
Until at last it lay where none can tell.
No longer will it be an ornament
Upon the branch where it had spent
A useful life, until the airy swell
Refused to let it any longer dwell
In useful service quite magnificent.

So, as I make my journey day by day
Through life, and try to win its lofty prize—
The prize of happiness and joy supreme—
I often ask, "How long will death delay
To take away from me this mortal guise,
And put an end to my ambitious dream?"
— R. R. Lewellen

FRESHMEN





Early, Bruce

Liberty

OFFICERS

President
Vice-President
Secretary
Treasurer

BRUCE EARLY
CLOVIS CRAIG
ALICE JACOBS
LEONARD JORDAN



THE FRESHMAN GROUP

W. J. C. Spirit

We stand enthralled at th' base of this fair hill
Whose gleaming summit lures us forth to climb;
For though to linger were to one and all
To satisfy our hope of emprise great
With crass achievement-gain without attempt-
We fain would dally in some timeful play,
And leave to older heads and hearts awhile
The conflicts they can e'er so deftly gain,
And spend our nascent strength in pleasure's lure;
For do not younger heads rest more secure
On younger shoulders, and more fitly, too?
So, come, to dance and frolic without thought
Of what will come without our aid.
But no! The sunlight pure that 'nwraps yon grand
And lofty peak, may play around our brow,
If only we press on with pure intent
And youthful ardor, tow'rd the shining heights
Of duty, well-performed in loving zeal,
E'er thoughtful-not of selfish gain alone-
But in fraternal bonds with ready hand
To speed our neighbor in his earnest quest.
Thus all may stand in sacred comradeship,
In fair repute before the eye of God
And man, with courage, honor, well upheld.
Thus, each, in holy confidence, may say:
Whate'er we do, or well or ill, in faith,
No cowards we, we'll do above our names.
So thus we stand at th'base of this fair hill,
With full intent its luring heights to climb.

--R. P. Rider

HIGH SCHOOL





THE HIGH SCHOOL GROUP





ROBERT EARL BOWLES
Athletic Coach

Liberty

Robert Earl Bowles, Head of the Department of Physical Education, was graduated from William Jewell in 1912. During his college days he was an all around athlete but made a specialty of baseball. For three years he was Jewell's pitching ace as well as being a football star. It was in the role of senior football man that he earned his nickname. The coach used to entrust the team to him on short trips on which occasions he became a veritable father to his team-mates winning, thereby, the pseudonym of "Dad".

After receiving his A. B. degree "Dad" went to the Y. M. C. A. training school for coaches in Chicago returning in the fall of 1912 to take up the responsibilities of his new office.

During the twelve years of "Dad's" reign, Jewell has won twenty-seven conference championships and tied for eight others in all phases of college athletics. "Yes, we've had our share," says "Dad".

Record of Athletics

It is with pride that every Jewellite looks back upon the athletic record of the ten or twelve years just past; years in which the Jewell teams with their faithful training and untiring work have builded athletic history that will live forever.

Victory after victory, championship after championship has winged its way to our gymnasium so that now we are credited with more championships than the remainder of the colleges in the conference together.

However, in reviewing those years, somehow we do not wish to remember only championships but rather to recall the men; men who have played the game clean and hard because they loved the college; men who have made our present standing possible; men who have passed on to buck the game of life just as hard and to serve humanity just as faithful.

Jewell has a record for turning out real winning athletic teams in the past and the main reason is because she has always striven to turn out real men, and real men always win.

Jewell has put some teams on the field that fought their way to victory easily. Most years, however, it has been a fight that tested the metal of the best, and after the testing Jewell stood forth crowned with glorious victory. Few have been the times that the colors have wavered down to trail for a moment and only for a moment because Jewell's true sons have come back fighting to lift them high again.

On the field our teams have observed well the rules of gentlemanly conduct and though they played the game the hardest they possibly could they never stooped to foul means to win.

Because of this Jewell has gained the right to stand in the front ranks of athletics. Throughout the conference the "Big Red" Team filled with that never dying Jewell spirit, are feared for their hard fighting and honored and respected for their clean playing. For what more could we ask?

After having looked for a moment into the past it is the spirit of every Jewell son to face the future and go forward with a strong determination to raise the colors high and carry the standard ahead with the same unflinching loyalty of those of the past for Jewell.

FOOT BALL





JUSTUS
Captain

Trenton

During his three years of college football Justus has been a strong factor in Jewell's forward wall and captained the Cardinals through another successful season. His fierce tackling and receiving of passes feature his play. His offensive and defensive work landed him the captaincy of the All-State this year.

JUSTUS, CAPTAIN.

End

Age 20, weight 170. "Ernie" in addition to piloting the Big Red Team through a successful season landed the captaincy of the All State Team. A great tackler and the receiver of most of Jewell's forward passes. Will be very valuable to Dad on the right wing next year.

ELLIOTT, CAPTAIN-ELECT

Halfback

Age 20, weight 170. Although "Jabo" was handicapped by injuries during the latter part of the season he had a very successful season in his third year of college football. He was chosen as half on the All State Second Team. A good line plunger but a star in breaking up forward passes.

WOOD

End and Halfback

Age 21, weight 175. "Hoot" has the distinction of being placed on the All State Team at end for four successive years. Besides being a good punter and dropkicker he could plunge the line and work on either end of a forward pass. Will be greatly missed next year because he was a valuable asset at end or at any position in the backfield.

GARDNER

Quarterback

Age 20, weight 165. Showed up well after the season got under way and very successfully directed the team on the gridiron. A fighting demon. "Chick" is a man of exceptional ability, as a ball lugger.





PENCE *Fullback*
 Age 18, weight 200. Received honorable mention in his first year of college playing. His weight and line plunging ability made him a hard man to stop.

BARTON *Tackle*
 Age 22, weight 180. Won honorable mention at end and tackle his first two years. Won berths on the All-State Second Team the last two years, at tackle. A hard tackler and equally good on both offense and defense.

COGSWELL *Halfback*
 Age 22, weight 140. A man with lots of pep and fight. Started the season in great style but hit a slump and then staged a great comeback in the Thanksgiving Day game, which was his last for the Cardinal and Black. He was given honorable mention in the M. C. A. U. selections.

SOUTHARD *Guard*
 Age 25, weight 220. Playing his last season for Jewell, "Tubby" was placed on the First All-State Team at guard. He more than filled his position in the line both in size and playing ability.

KING *End and Halfback*
 Age 19, weight 165. "Dud" is a man of ability, playing a good game at end on the offense and safety on the defense. Injuries put him out of the running near the close of the season.

JORDAN *Tackle*
 Age 20, weight 210. A powerful linesman who made it practically impossible for the opposing team to gain on his side of the line. Injured his knee in the Baker game but was able to play the Thanksgiving game and won honorable mention on the mythical eleven.

OWEN *Halfback*
 Age 18, weight 160. Little but mighty. "Spud" was one of the hardest hitting backs on the team. A first year man who made good by his continuous fighting. Starred in the Turkey Day game.

CRAIG *Center*
 Age 21, weight 180. Although his first year of college football he did credit to himself and to Jewell at the center position. He was rewarded by being placed on the Second All-State Eleven. Always in the game and fought from start to finish.





HARVEY *Guard*
 Age 22, weight 190. Was especially of value to the Cardinal team in the first half of the season. When in a fighting mood T. V. L. was hard to stop.

MOORE *Tackle*
 Age 20, weight 185. A powerful man on the defense and always full of fight. "Fat" should land a regular berth next year.

KELLAR *Quarterback*
 Age 18, weight 145. Won honorable mention his first year. What he lacks in weight he makes up in speed. "Smoky" is a fast, shifty broken field runner and especially good on end runs.

GRISSOM *Guard*
 Age 19, weight 175. Another first year man who showed worlds of fight and proved a strong cog in the left side of the line during the latter part of the season.



THE FOOTBALL SQUAD

Football Season '23

In response to the call for candidates for the season of 1923 it was found that "Dad" lost four men by graduation and that Big Ben Tolson also failed to return. His hardest blow however was the loss of Shoemaker, one of the best quarter-backs that ever donned the moleskins. With these holes to fill up, Dad set about his task and succeeded in picking a likely team headed by Captain "Ernie" Justus.

The season opened with Westminster at Fulton and much to the sorrow of the Blue Jays ended with Jewell on the long end of a 3 to 0 score. "Jabo" Elliott's line plunging featured the game.

Tarkio came down the next week and while the linemen were tossing mud balls at each other, Jewell's backfield piled up 26 points.

Then came Drury, somewhat weaker than usual, and the Big Red Team had no trouble in piling up the largest score ever made between the two schools, 32 to 0.

In the Baker game, Jewell was the first to score only to have Baker luck a touchdown a little later and kick a field goal in the last quarter. Wood found himself in this game and time after time broke up a three man interference and nailed the runner. Craig also was there with his spectacular tackles. The game ended 10 to 7 in favor of Baker.

Meeting Warrensburg on the home field with Jordan out on account of injuries the team was slightly handicapped. Going into the last quarter with the score 13 to 3 against us, Jewell with Wood and Pence leading the attack marched down for a touchdown. Warrensburg kicked off and Jewell carried the ball to the ten yard line but was somewhat weakened by their pace. Pence passed to Captain Justus behind the goal line but he was covered by three men. One of the half-backs hooked the ball a few inches from the ground but unfortunately the ball had touched the goal posts. So the game ended in the Mule's favor, 13 to 10.

Then Missouri Valley, playing a wonderful game, won 14 to 7.

But with the true Jewell "spirit" of "no sadness, no alibi, and no regrets," the Big Red Team went to Kirksville with a determination to avenge her three defeats and did so by a 20 to 0 score.

Then with two weeks of rest and a spirit that couldn't be beaten, Jewell went to Cameron to take Missouri Wesleyan into camp and bring home the bacon. The Cameronites were overconfident by having a clean slate of six victories and the championship virtually in their hands. In a driving snowstorm, Dad's bunch of scrappers proved their worth and brought home that slab of bacon with Jewell 14, Wesleyan 7, inscribed upon it.

Little "Spud" Owen was the hero, scooping up a fumble and running seventy-five yards for a touchdown while the two teams were engaging in a snowball fight.

Thus the season ended successfully with Jewell's resolve to bring the championship back to the "Old Hill" in '24.

FOOTBALL RECORD 1923

Westminster	0	Jewell	3
Tarkio	0	"	26
Drury	0	"	32
Baker	10	"	7
Warrensburg	13	"	10
Mo. Valley	14	"	7
Kirksville	0	"	20
Mo. Wesleyan	7	"	14
TOTALS	Opponents 44	"	119

BASKET BALL





Letter Men '24

- WORNALL—weight 135 lbs., age 21, height 5 ft. 9 in. Forward. Although this is Wornall's first year on the Jewell team, he played excellent basketball. He plays the floor well and is a sure shot under the basket.
- GRAVES—weight 160, age 19, height 6 ft. Forward; Graves, a freshman this year played his first year of college basketball. He plays at either forward or center position and has the making of a valuable player.
- GARDNER—weight 177 lbs., age 20, height 5 ft. 9 in. Guard. "Chick" played an excellent game the entire year. He is full of fight and is hard to stop.
- KING—weight 165, age 19, Forward. Captain. Playing his second year on the varsity he played an excellent game. A man who can always be depended upon in a pinch. He has no end of fight and is a good leader.
- GRIFFIN—weight 145 lbs., age 21, height 5 ft. 9 in. Guard. "Griff" is captain-elect and well worthy of the position. His playing this year was the feature of most of the games and much is expected of this diminutive guard next season.
- WOOD—weight 180 lbs., age 21; height 5 ft. 10 in. Center. "Hoot" played his last game for Jewell this year and by his graduation the team loses one of its most consistent players. He was high point man of the team and was a reliable player at critical times.
- HIRNI—weight 160 lbs., age 19, height 5 ft. 10 inches. Forward. This is Hirni's second year with Jewell and he played a game befitting a more experienced man. His floor work was excellent and he had a remarkable faculty at heaving long shots through the net.



THE BASKET BALL SQUAD

Basket Ball Season 1923-'24

Prospects for Jewell in basket ball were indeed bright this year when at the beginning of the season Dad found four letter men about which to build a team. Wood, King, Hirni and Griffin were back to fight for another J but the loss of Toalson and Newman was strongly felt. However some forty aspirants responded and among them was a wealth of material.

It was not until after Christmas that Dad was able to select the permanent squad of fifteen men. The Cardinal team after a short period of practice journeyed to Park and played them the opening game of the season. Jewell lost this game by a small margin and it marked the beginning of an indifferent bit of luck. From this time on until near the close of the season, Jewell apparently lacked some necessary element which goes toward winning consistently. The games throughout the season were won or lost by a narrow margin.

Near the close of the season the interest of the team, and of the fans of Jewell was aroused and stimulated by an exhibition of some excellent basket-ball playing and for the remainder of the season the team was quite successful. The consistent playing of Gardner and Griffin throughout the season was the feature of the year.

Jewell's prospects for the next year are promising since Wood is the only graduating man, and it is probable that Toalson will return. With the excellent veteran material and the promise of new men, there is no reason why the Cardinals should not have a winning team.

Park	17	Jewell	8	Tarkio	18	Jewell	29
Alumni	8	"	40	Mo. Valley	10	"	31
Culver-Stockton	18	"	25	Westminster	31	"	18
Junior College	18	"	15	Culver Stockton	31	"	27
Drury	23	"	18	Mo. Wesleyan	16	"	30
Drury	24	"	13	Junior College	31	"	29
Rolla	26	"	31	Rolla	24	"	25
Rolla	25	"	17	Mo. Valley	22	"	42
Drury	31	"	19	Park	17	"	24
K. C. A. C.	46	"	19	Total	428		461

A Message from the Old to the Young

To Twenty-Seven says Seventy-Two;
'Tis a far cry, my dears, from me to you;
But far or near, let the distance be,
We can span it with love right easily;
For reaching out in the distance blue,
A bridge leaps the chasm 'twixt me and you;—
A bridge that erstwhile was a Bridge of Sighs,
But in glad reversion, this sweet truth lies:—
The piers may be golden, the pathway pearl,
The arches, like rainbows, bright hues unfurl,
And all may stand in the lovely sheen
Of the sun-bright hours that glide between,
If we walk that pathway of pearl in love,
With a steadfast eye on the realm above,
With a ready hand for those tarrying near
Who may need some sign of fraternal cheer.
If this you do, this dread Bridge of Sighs
May become the bright pathway to Paradise.

Says Seventy-Two to Twenty-Seven:—
Would you walk this pearly way toward Heaven?
Then of petty Self e'er forgetful be,
And Scatter sweet heart-thoughts right lovingly.
As you pass in joy this bright way along,
Let the air resound with cheering song
That may bring to hearts that sadly droop,
The enlivening power of a quickened hope.
Too, give of your love in large degree,
In the holy name of the One in Three:—
If this you do, O dear Twenty-Seven,
You will walk the radiant way toward Heaven.

To Twenty-Seven says Seventy-Two:—
As forth o'er these golden piers you go,
Some tears may fall,—and I hope they may,—
Their mist will but temper the garish day,
If tears of a loving sympathy
With lonely grief and distress, they be;—
Such tears as, like April rain-drops, bring
The bright, the glorious, emerald Spring.
Then let your smiles, your tears, your deeds,
Contribute to your fellows' needs
In trustful love of our common Lord;—
In His great name,—we have His word,—
You'll tread the pearly path toward Heaven;—
Says Seventy-Two to Twenty-Seven.

R. P. Rider.

TRACK





C. C. Wood
Captain

Kansas City

"Hoot" was elected to the captaincy of the 1923 Track Team after the departure from school of Capt. H. E. Hall. Wood is a consistent point winner in both the broad and high jumps and the pole vault. He holds the Jewell record in the broad jump at 21 ft. 6 in.

Track Season '23

The Cardinal cinder path aggregation suffered at the outset a material loss in the departure from school of Capt. H. E. Hall. Hall was especially strong in the dashes and left a vacancy hard to fill. C. C. Wood was elected to fill his position as captain and prospects looked fairly bright. The squad was forced to work rapidly into condition for the meet with Haskell, which resulted in an easy victory for the visitors who defeated the Cardinal artists by a score of 87½ to 27½.

As a preliminary to the meet Nelson and Wornall defeated Haskell in both singles and doubles in tennis. In the second meet of the season Jewell lost to Missouri Wesleyan who chalked up an 80-42 score, with Clark as high-point man.

The next meet on Jewell field proved more fortunate for the Cardinals who defeated the Junior College team by a score of 87-30. The K. C. representatives, however, defeated Davis and Wornall in tennis only one match going to Jewell, that of Davis against Northrup.

Jewell next met Baker on Jewell field in perhaps the closest meet ever run on the local field, the mile relay deciding the victory by three points. Toalson set a new record for the javelin and Wood reached a new mark in the broad jump.

In the M. I. A. A. meet at Tarkio Jewell fell into fourth place. Springfield carried away the victory.

Annual Invitation High School Meet

The inclement weather was indeed a serious handicap this year in the annual invitation track meet held here. Notwithstanding this fact the meet was quite successful. Liberty won the second consecutive time with a total of thirty nine points as compared with twenty seven last year. A drenching rain fell throughout the entire meet and with a heavy field, conditions did not appear at all favorable. However a new record was established by Jordan of Liberty in the discus throw when he hurled the plate one hundred sixteen feet and three inches. The meet was marked by the absence of spectators during the concluding events.

Of the twenty eight schools that entered, twenty three were represented by teams. Williams of Harrisonville was high-point man with a total of eleven and a third points and Wilcox of Liberty was runner up with ten points. Harrisonville won the second place with seventeen and two third points, and Trenton ranked third with eleven.

Score as follows:

100yd dash Wilcox, Liberty, 10.2
120yd high hurdles—Williams, Harrisonville, 17.1
220yd low hurdles—Hammond, Harrisonville, 29.2
220yd dash--Wilcox, Liberty, 23.3
440yd dash--King, Liberty, 59.1
880yd run--Riddle, Liberty, 2:9.4
Mile run--Townsend, Breckenridge, 5:8
Shot put--Wooden, Braymer, 41ft. 3in.
Discus--Jordan, Liberty, 116ft. 3in.
Pole vault--Lawton, Brookfield, 9ft. 6in.
Broad jump--Gresham, Liberty, 19ft. 6in.
High jump--Gresham, Liberty, 5ft. 7in.
Half mile relay--(Grubbs, Pence, King, Wilcox), Liberty, 1:43.2



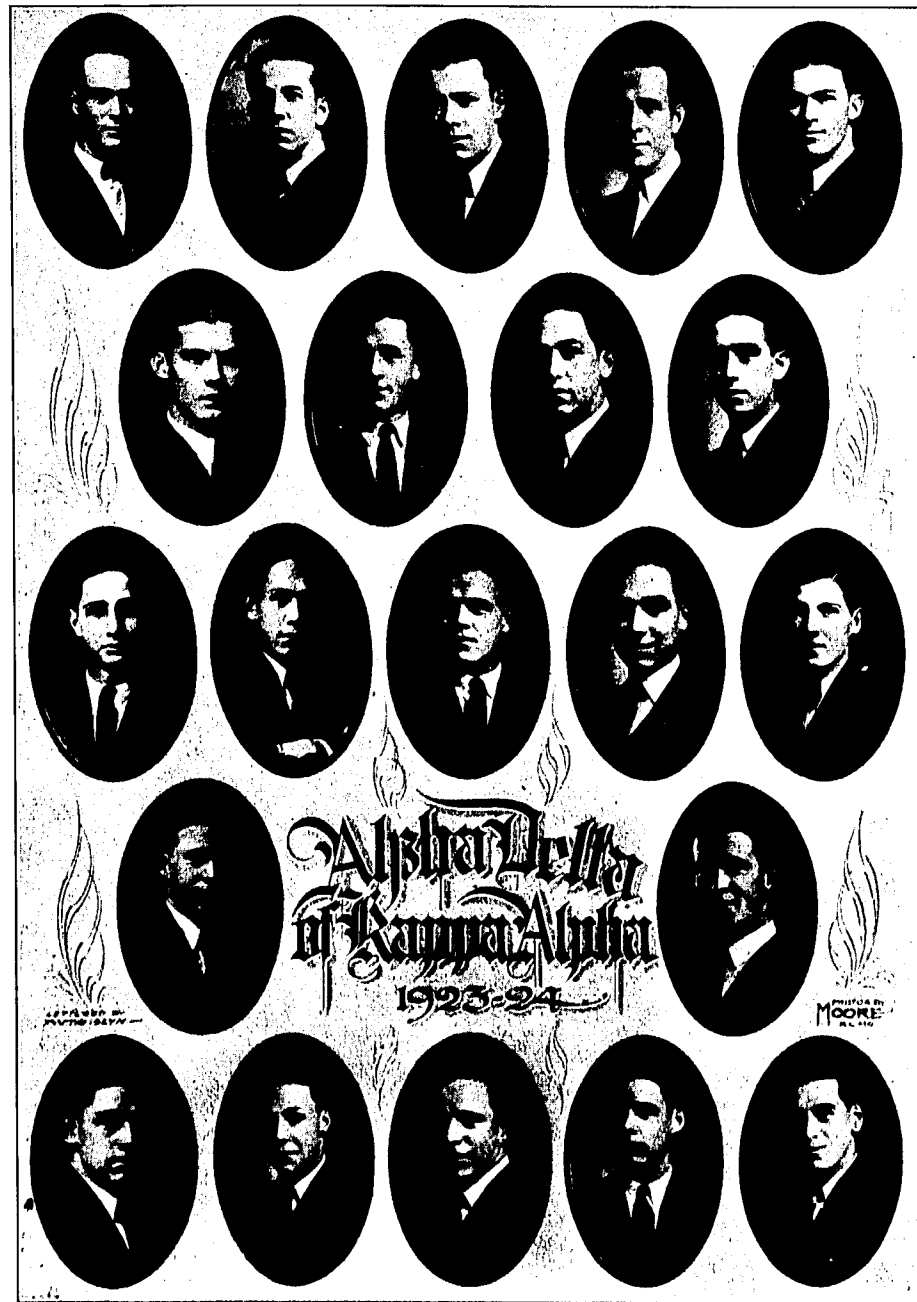
J. B. WORNALL

Kansas City

Captain

Once again Jewell upheld her honors in tennis. Three men won their letters in this sport, Wornall, Davis, and Nelson and they were a combination hard to meet, winning most of their matches.

Wornall was ineligible for the State meet and Davis and Nelson were Jewell's representatives. They lost the doubles, but Davis was victorious in the singles, continuing the long string of victories that have come to the "Hill" in this sport.





Kappa Alpha

Founded at Washington and Lee University, 1865

ALPHA DELTA CHAPTER

Established January 26, 1887

Flower—Magnolia and American Beauty *Colors*—Crimson and Gold

CHAPTER ROLL

J. W. Elliott	B. T. Moore	Gene Hall
D. T. King	C. B. Pettus	R. V. McGrath
M. L. Stuart	R. R. Osborn	E. R. Jackson
E. N. McAllister	Tom Sexson	

PLEDGES

W. J. Moore	R. L. Hundley	W. E. King
R. L. Shouse	W. E. Overmyer	L. F. King
J. W. Tomlinson	V. J. Daugherty	Weldon Rhoades
J. R. Terhune	J. H. Jenkins	T. L. Noel

FRATRES IN URBE

J. L. Dougherty	John L. Peters	Arthur T. Groom
Judge Ralph Hughes	Arnold Pitts	V. P. Mason
Dr. A. M. Tutt	Joe Mason	W. W. Breckenridge
Spurgeon Campbell	W. E. Campbell	H. C. Hufford
	E. B. Black	



Kappa Sigma

Founded at University of Virginia, 1867

Flower—Lily of the Valley *Colors*—Scarlet, Green and White

ALPHA OMEGA CHAPTER

Established May 10, 1867

ACTIVE MEMBERS

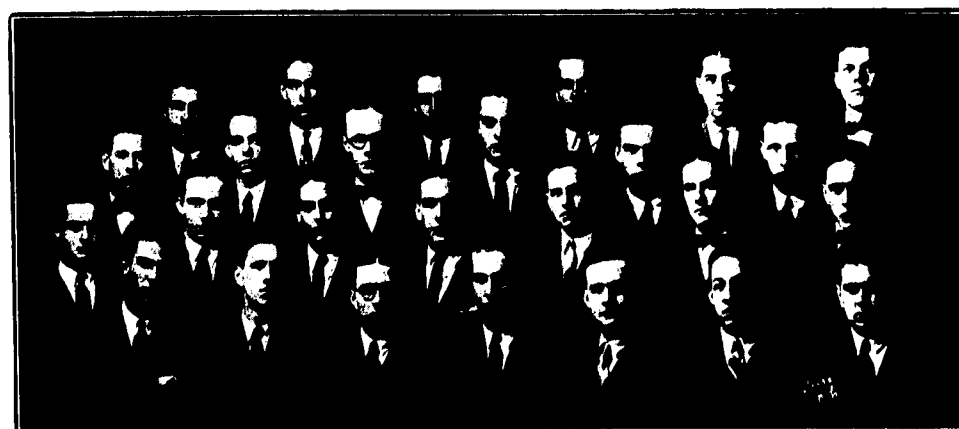
David Bywaters	Earl J. Hamrick	Norman W. Sederberg
Charles M. Burton	Eugene Jeffers	Earl F. Southard
Joseph B. Carder	Dee Earl Mack	Winton G. Tracy
Darrell A. Carmichael	Farris Marshall	Robert G. Tebow
John E. Dulin	Millard Moor	Clarence H. Thomason

PLEDGES

J. T. Haley	Harold Owen	Karl Gebert
Leonard Jordan	Robert Redd	James Van Douglas
Randall Kitt	Philip Grissom	John B. Sims
J. M. Loomis	Harold Wilson	James Ryland Fleet
Dee Mosby	Richard Bywaters	Lewis G. Pence
	Clovis G. Craig	

FRATRES IN URBE

S. G. Biggerstaff	Elston Gentry	R. D. Ray
L. B. Carr	F. M. Duncan	G. D. Trimble
F. Z. Courtney	R. G. Gilmer	J. A. Robinson
A. B. Crawford	S. M. Hunt	H. F. Simrall
W. C. Crawford	Roy Handley	J. S. Simrall
E. B. Duncan	J. C. Loos	R. M. Simrall
J. C. Fritzlen	R. A. Peace	R. Ward
	H. J. Ray	



Phi Gamma Delta

Founded at Jefferson College, 1848

ZETA PHI CHAPTER

Established April 24, 1886

Flower—Heliotrope

Color—Royal Purple

CHAPTER ROLL

Leland B. Hirst	John W. Williams	Kirk McDaniel
Ernest M. Justus	Frank H. Trimble, Jr.	Walker Pierce
W. Allen Lowry, Jr.	Wm. E. Partee	David A. Pierce, Jr.
Paul Glenn Gordon	Jerome D. Alexander	Kenneth McKinney
John B. Wornall, Jr.	Byron E. Williams	Wm. D. Baskett, Jr.
A. B. Hunt	George E. Wainscott	H. Walker Gilliam
	John L. Anderson, Jr.	Lynn W. Moore

PLEDGES

Ben B. Few	R. H. Shipp	Thurston Isley
	E. O. Godfriaux	

FRATRES IN FACULTATE

J. P. Fruit, Ph. D.	R. P. Rider, A. M.	J. C. Armstrong, D. D.
H. G. Parker, Ph. D.	J. E. Davis, A. M.	J. H. Rothwell, M. D.

FRATRES IN URBE

Judge F. H. Trimble	Norton Hardwick	Harris R. Newman
Webster Withers	Lynn Shouse	Ralph Merritt
R. W. Stogdale	J. Collins	Alan F. Wherritt
C. E. Yancy	J. J. Morrow	Frank O. Shouse
Robt. F. Withers	Carey L. Motley	Wm. Yancey
	J. D. Henry	E. H. Miller



Sigma Nu

Founded at Virginia Military Institute, January 1, 1869

Flower—White Rose

Colors—Black, White and Gold

BETA XI CHAPTER

Established January 1, 1894

CHAPTER ROLL

C. C. Wood
C. C. Barton
J. F. Davis
T. N. Grizzell
D. A. Cone

D. H. Sheets
A. H. Osborn
T. B. Rendlen
S. D. Church
H. E. Leach

L. K. Roberts, Jr.
G. C. Hays
F. H. Fristoe
H. H. Hughes

PLEDGES

A. Wadlington
J. B. Hunt
J. Q. Cope, Jr.
C. H. Peterson

M. K. Ware
W. P. Ewing
W. M. Miller
B. P. Storts

S. P. Harris
C. L. Eikost
H. H. Bush
H. R. Gravelle

FRATRES IN URBE

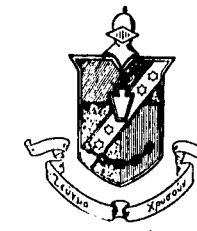
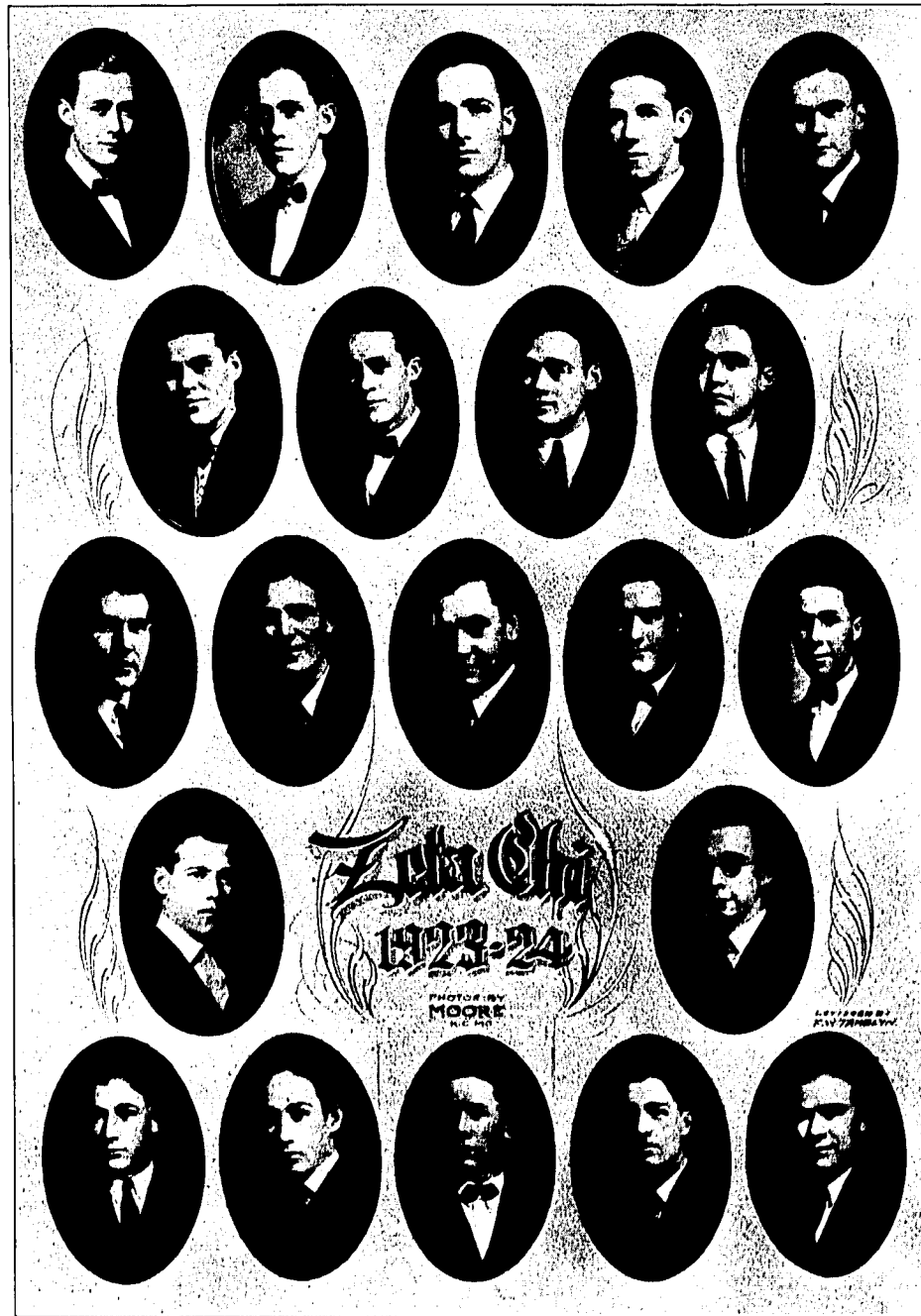
F. D. Hamilton
E. H. Norton
O. F. D. Nutter

W. P. Hall
D. M. Church
Herbert Eby
Tom Wornall

R. G. Funkhouser
Finley Mason
S. H. Lott

FRATRES IN FACULTATE

Arthur G. Byrns



Zeta Chi

Founded at William Jewell College, 1916

Flower—White Carnation

Colors—Yale Blue and White

ACTIVE CHAPTER

M. I. Brown
C. F. Cain
R. M. Day

F. C. Holmes
H. N. Howard
E. V. Johnson
J. J. Roark

D. L. Cain
V. B. Schuman
H. W. Zach

PLEDGES

W. E. Cordonnier
B. J. Cordonnier
J. R. Renshaw
G. G. Gates

M. C. Warren
R. L. Williams
W. F. Richardson
C. L. Bickle

W. M. Swarner
A. W. Fuson
W. K. Dinwiddie
W. D. Scott

FRATRES IN URBE

J. A. Manlove

Jesse Gittinger

John Goodman

FRATRES IN FACULTATE

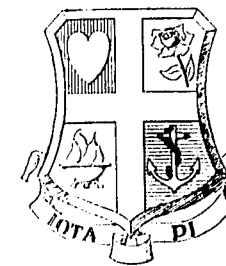
George White

W. O. Walker



INTER-FRATERNITY COUNCIL

Sorority



Iota Pi

Flower—Red Rose

Colors—Red and White

CHAPTER ROLL

Ruth Campbell
Roma Chenoweth
Allene Chrisman

Mary Lee Doherty
Opal Stonum
Virginia Doherty

Irene Froman
Mary Margaret Jesse
Ruth Jesse

SORORES IN URBE

Lucile Conway
Belle Dougherty
Mrs. Herbert Eby

Mrs. Roy Handley
Ada Maher
Mrs. Finley Mason
Madeline Reed

Hazel Sevier
Grace Trimble
Frances Wymore

Sponsor—Mrs. P. Caspar Harvey



MISSOURI DELTA CHAPTER OF PI KAPPA DELTA





AEONS

Senior Honorary Society to further the interest of William Jewell College

HARRY N. HOWARD JOHN E. COGSWELL C. C. WOOD D. A. CONE CECIL BARTON



T. N. T. Club



Flower—Violet

Colors—Lavender and Purple

CHAPTER ROLL

Lucile Hall
Blanche McComas

Ernestine Dow
Helen Reed
Anna Payn

Helen Welsh
Bertha Johnstone

PLEDGES

Imogene Swan

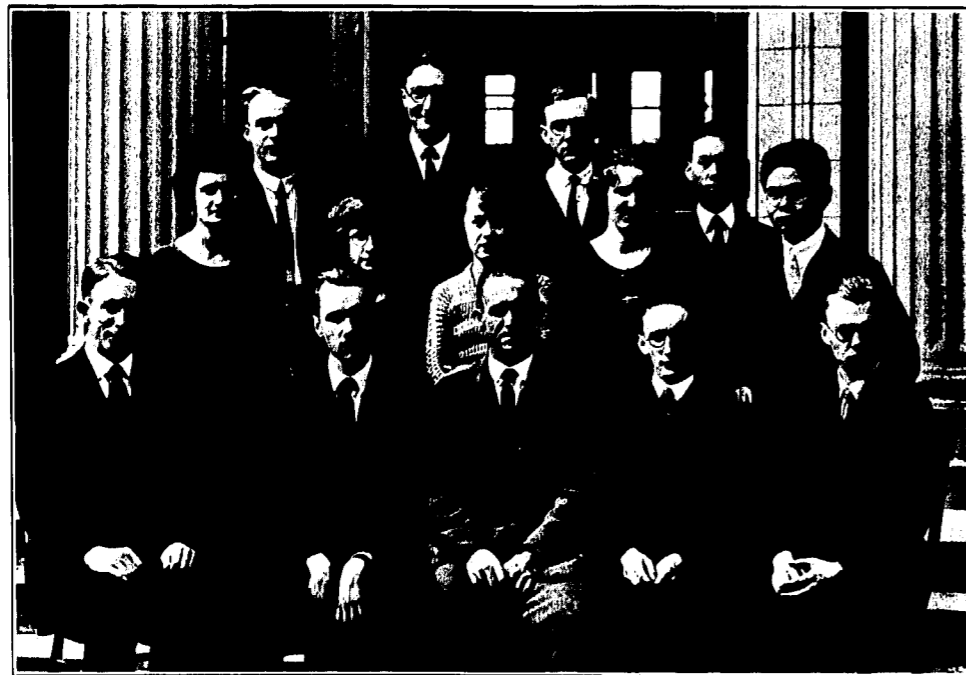
Alice Jacobs

IN URBE

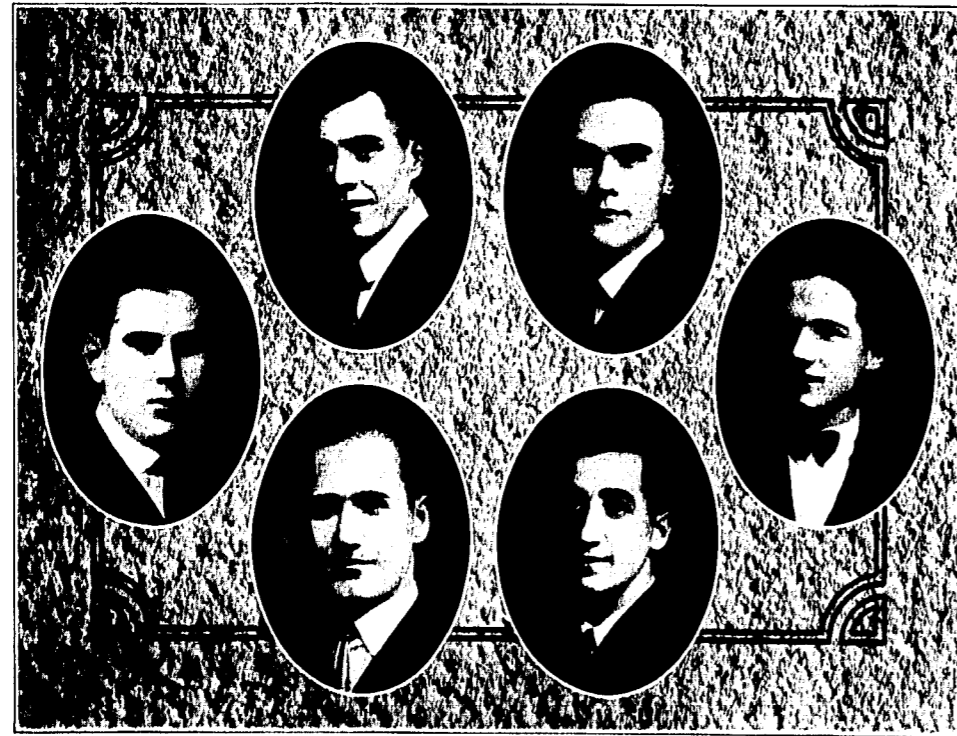
Helen Iglehart

Mrs. John Dow

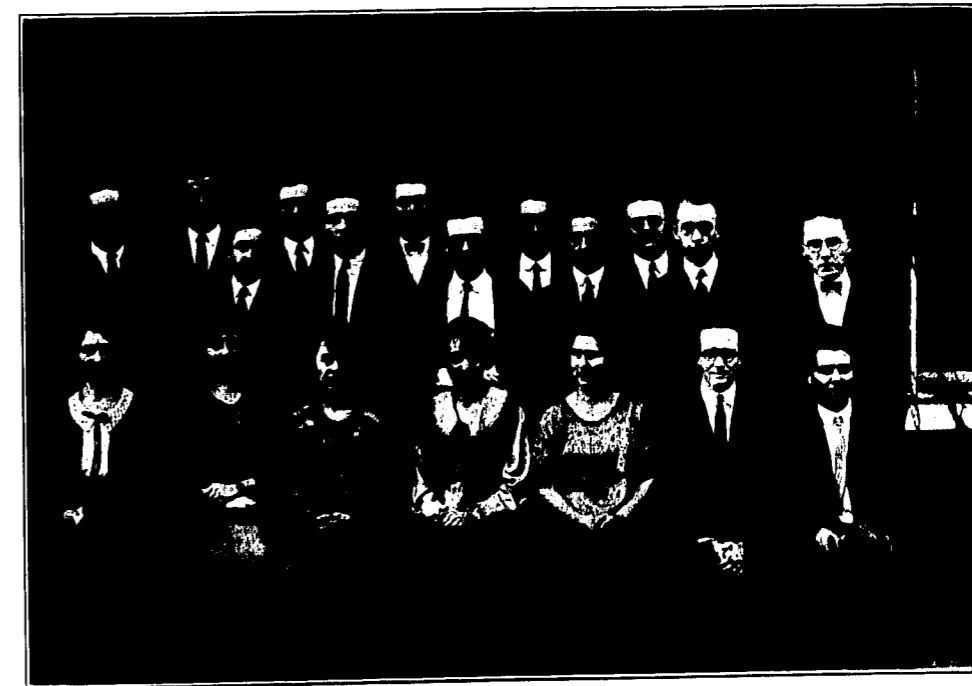
Mrs. Paul Jones



STUDENT VOLUNTEERS



THE STUDENT SENATE



PHILOMATHIC LITERARY SOCIETY

Founded 1853

Motto—Libertas et Eloquentia una Florent

The Philomathic Literary Society is an organization composed of students desiring to better themselves in a literary way.

Members have the opportunity to prepare readings, papers, talks, et cetera and deliver them before the society.

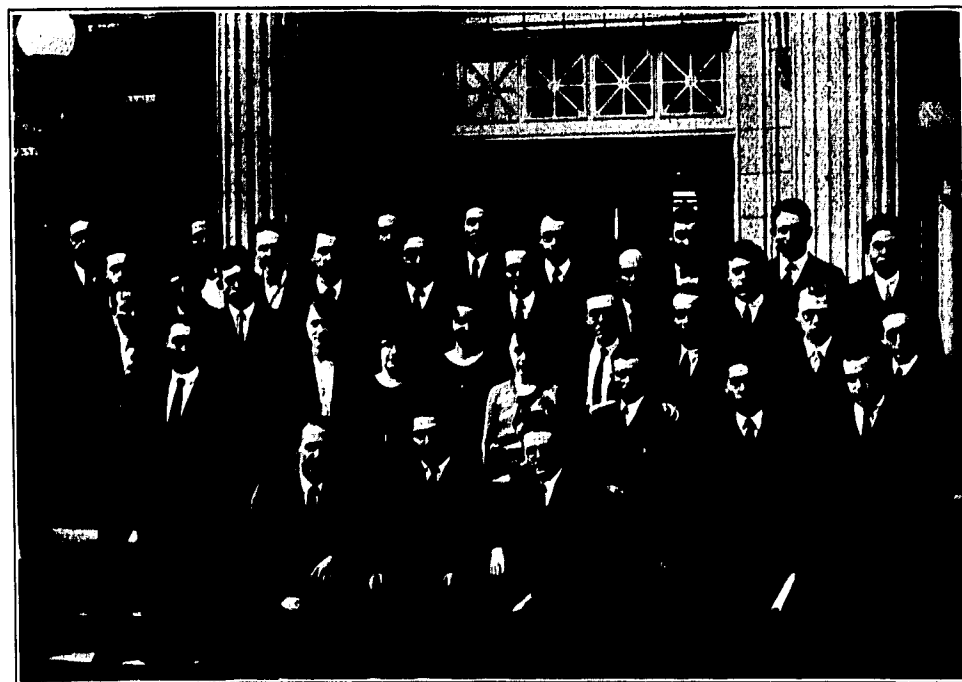
Members of the faculty and others are frequently invited to speak on subjects in their special field.

OFFICERS

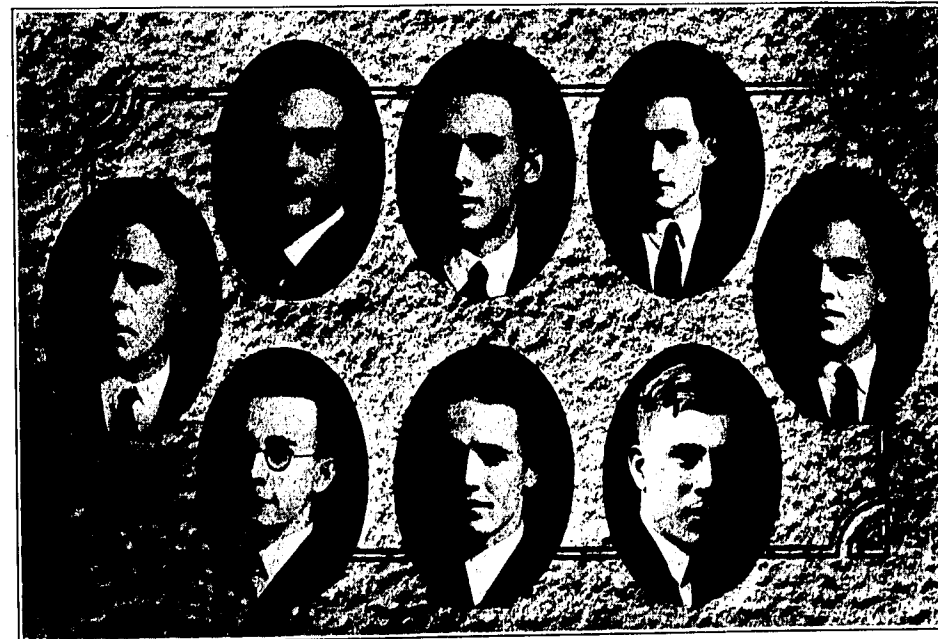
Presidents	Vice-Presidents	Secretaries
	FALL TERM	
V. B. Schuman	R. E. Keohane	M. A. Mulvania
	WINTER TERM	
V. B. Schuman	L. A. Foster	Maud Smith
	SPRING TERM	
L. A. Foster	M. A. Mulvania	Mildred Potter



COSMOPOLITAN CLUB



JUDSON-PECK SOCIETY



KEATS CLUB

PROGRAM 1923-'24

DATE	REPORT	HOST
Sept. 5	The Faust Legend--Mr. Ingle	Mr. Stuart
Sept. 19	"Antigone" of Sophocles--Mr. Shuman	Mr. Schuman
Oct. 3	"Walden" by Thoreau--Mr. Holmes	Mr. Cone
Oct. 17	"Chaucer"--Mr. White	Mr. Ingle
Nov. 7	Some historical points of view in language study--Dr. Baskett	Mr. Keohane
Dec. 12	"The Confessions" of St. Augustine--Mr. Keohane	Dr. Baskett
Jan. 19	"Sartor Resartus" by Carlyle--Mr. Stuart	Mr. Holmes
Jan. 23	Mithras and Mithraism--Mr. Schuman	Mr. White
Feb. 6		Dr. Baskett
Feb. 19		Mr. Eichenlaub
Mar. 5	"Modern Philosophy" Empiricists and Kant--Mr. Ingle	Mr. Ingle
Mar. 19	"Reconstruction of Philosophy" by Dewey--Mr. Howard	Mr. Keohane
Apr. 2	Theory of the Drama up to the Renaissance--Mr. White	Mr. Schuman
Apr. 16	Shubert--Mr. Eichenlaub	Mr. Wm. Baskett
Apr. 30	Joint meeting with the Khem Club	Mr. Rhodes
May 7	Lessing--Dr. Baskett	Mr. Holmes and Mr. Stuart
May 14		Mr. Hill



YE SONS OF GUTENBERG

Founded at William Jewell College in 1922

Purpose—To promote an interest in universal philosophy in William Jewell

Motto—Protoplasm is Polymorphous

OFFICERS

HARVEY J. RAY
STILES LESSLY
ROY L. WILLIAMS
M. C. WARREN
R. W. DAVIS

High Priest
Imperial Potentate
Chancellor of Exchequer
Custodian of the Mace
The Devil and Nulsance

MEMBERS

Harvey J. Ray
M. I. Brown
Martin Eichenlaub
George E. Lipe

Floyd C. Holmes
Stiles Lessly
Roy L. Williams
Leon Noel

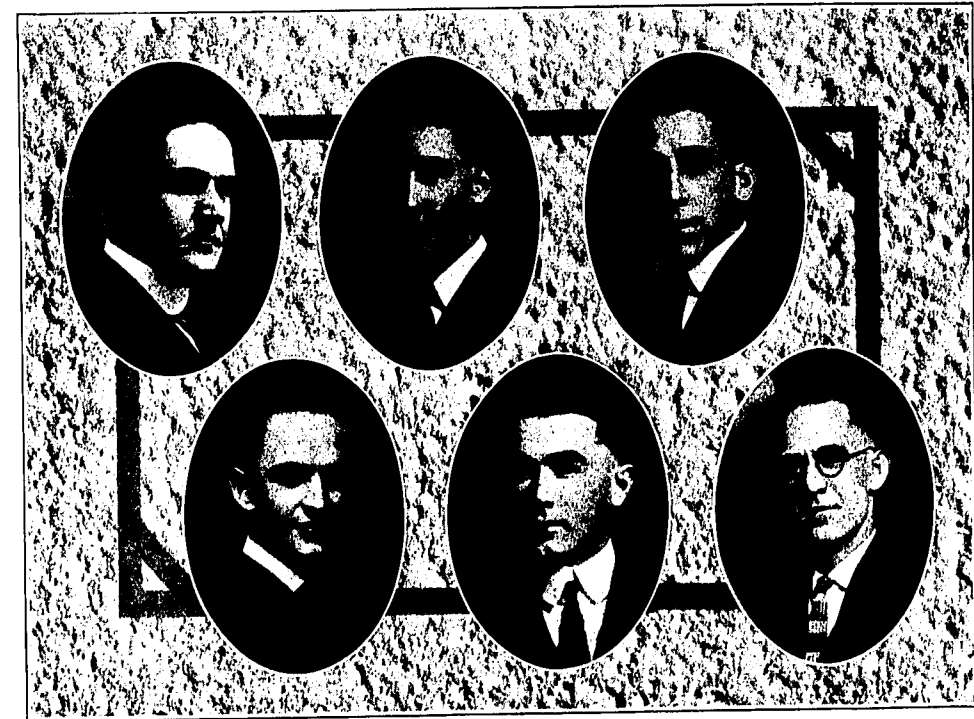
Jess Bartholomew
Harold Palmer
M. C. Warren
Herbert King

HONORARY MEMBER

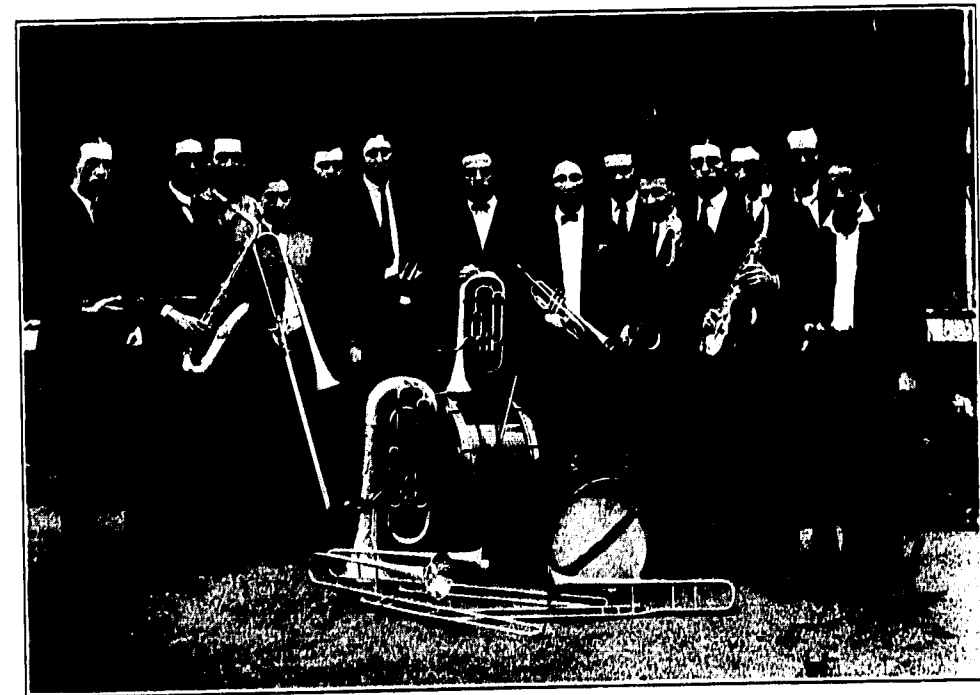
PROF. R. P. RIDER



THE SCRIBBLER'S CLUB



Y. M. C. A. CABINET



THE COLLEGE BAND



LOUISA PERRY ROSS
Directress of Girls

Liberty

Louisa Perry Ross came to William Jewell College in September 1923 to assume her duties as Directress of Girls. Miss Ross was graduated from Smith College, Northampton, Mass., in the spring of 1923.

Co-eds 1923-'24

Under the leadership of Miss Ross two organizations among William Jewell women have been perfected. The first, known as the Girl's Student Government Association, is composed of representatives from the four classes, and its official council acts in an advisory capacity in all disciplinary matters arising among the girls. A set of rules governing the general conduct of the girls has been formulated and adapted by the Association.

The second organization is the William Jewell Christian Association for College women. The general plan of procedure followed is similar to that of the Young Women's Christian Association. Its cabinet is composed of the regular officers and the committee chairmen who sponsor the different lines of activity among the women. An Advisory board of women of the town is also a part of the organization.

It is hoped that this association may in time be granted a charter from the National Y. W. C. A. Delegates were sent to the Y. W. C. A. Convention held at Fulton, Missouri in March, and plans are being made whereby a representative of the W. J. C. A. may attend the Y. W. C. A. Camp Conference at Estes Park, Colorado, during the summer.

The W. J. C. A. has endeavored to direct the all-round development of all the girls, and to create a social life between all classes of girls. The most outstanding enterprise of this type has been the entertainment of the visiting high school girls who came to the College to take part in the Annual Invitation High School Meet. A special feature was an outdoor breakfast for all the college girls the morning after the contests. A similar "Big Sister" movement will be fostered by the W. J. C. A. at the beginning of the school year next fall.



THE CO-ED CLUB



GIRLS' GLEE CLUB



WILLIAM JEWELL CHRISTIAN ASSOCIATION

LOUISA ROSS

BERTHA JOHNSTON

THELMA HART

NANCY CHAPMAN



GIRLS' STUDENT GOVERNMENT ASSOCIATION

RUTH CAMPBELL

LUCILE HALL

MRS. H. R. NEWMAN

BERTHA JOHNSTONE

MRS. M. A. CHURCH

TATLER '24 STAFF

F. D. HOLMES
 ASSOCIATE EDITOR

IRENE FROMAN
 LITERARY EDITOR

J. W. ELLIOTT
 ATHLETIC EDITOR

CHARLES M. BURTON
 ART EDITOR

T. N. GRIZZELL
 ASST. BUS. MGR.

CARL G. GIBBS
 CHIEF CLERK

JOHN B. SIMS
 EDITOR IN CHIEF, TATLER

HERBERT W. ZACH
 BUS. MGR., TATLER



P. CASPAR HARVEY
Debate Coach

Liberty

Since the return to the Hill, in 1920, of Prof. P. Caspar Harvey as Professor of English Composition, a reawakening of interest in debate has placed it among the leading activities of the school. Professor Harvey's work as acting debate coach is entirely without remuneration and at considerable financial loss to him.

Within the past four years Jewell has won two championships and two of the three contests with the University of Missouri Freshman team.

This year Jewell will meet in pre-convention debates before the Northern the Southern Baptist Conventions, teams from Colgate at Milwaukee and Mercer at Atlanta respectively.

Intercollegiate Debating at William Jewell

The record below gives the intercollegiate debates in which William Jewell has taken part since its first debate with Park College in 1898.

1. Columbia University of New York City, Jewell victory.
2. Drake University, Des Moines, Jewell victory.
3. Drury College, Springfield, six Jewell victories, one defeat.
4. Washburn College, Topeka, Kansas, five Jewell victories, two defeats.
5. Ottawa University, Ottawa, Kansas, four Jewell victories, four defeats.
6. University of Arkansas, Fayetteville, two Jewell victories.
7. Baylor University, Waco, Texas, three Jewell victories.
8. Washington University, St. Louis, three Jewell victories.
9. Bethany College, Lindsborg, Kansas, one Jewell victory, one defeat.
10. Central College, Fayette, Mo., three Jewell victories, one defeat.
11. Colorado College, one Jewell victory, one defeat.
12. Denver University, one Jewell victory.
13. Highland Park College, one Jewell victory.
14. Monmouth College, Monmouth, Illinois, two Jewell victories, one defeat.
15. Missouri Valley College, Marshall, Mo., three victories, one defeat.
16. Nebraska Wesleyan University, Lincoln, Nebr., three Jewell victories, one defeat.
17. Kansas Wesleyan University, Salina, Kansas, one Jewell victory, one defeat.
18. Park College, Parkville, Mo., two Jewell victories, three defeats.
19. Tarkio College, Tarkio, Mo., one Jewell victory, one defeat.
20. Westminster College, Fulton, Mo., one Jewell victory, one defeat.
21. Yankton College, one Jewell victory.
22. Baker University, one Jewell victory, two defeats.
23. College of Emporia, one Jewell victory, two defeats.
24. Des Moines University, two Jewell victories, one defeat.
25. Wake Forest, North Carolina, one defeat.
26. Oklahoma Baptist University, Shawnee, one defeat.
27. Missouri Wesleyan College, Cameron, Mo., two Jewell victories.
28. Friends University, Wichita, Kansas, one Jewell victory.
29. Kansas State Teachers' College, one Jewell victory.
30. Kansas City School of Law, two Jewell victories, one defeat.
31. University of Missouri (Freshmen), two victories, Jewell Freshmen, one defeat.
32. Junior College, Kansas City, two victories for Jewell Freshmen, one defeat.
33. Junior College, St. Joseph, one victory for Jewell Freshmen, one defeat.

TOTALS SIXTY-ONE JEWELL VICTORIES-----THIRTY DEFEATS

William Jewell has three more debates for the 1924 season.

1. Missouri Wesleyan, May 8 at Liberty
2. Mercer University, Macon, Ga., at Atlanta, May 13.
3. Colgate University, Hamilton, N. Y., at Milwaukee, May 27



VARSITY AFFIRMATIVE DEBATE TEAM

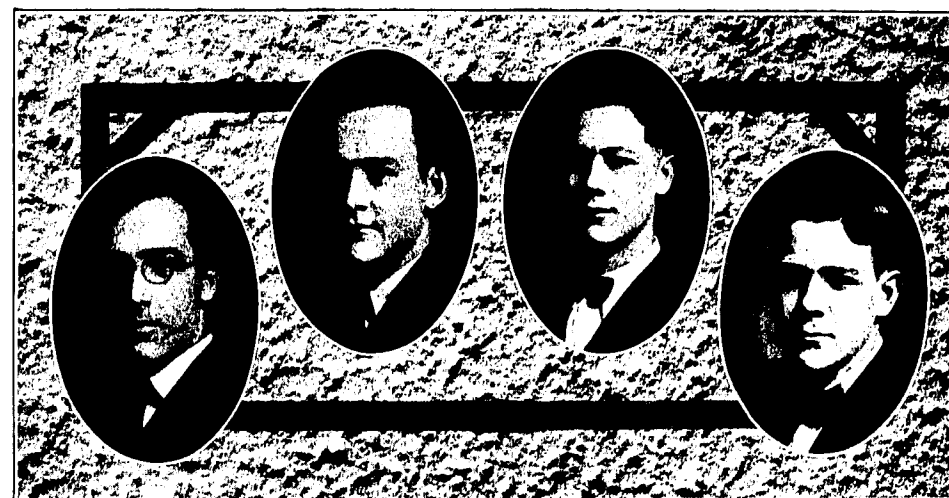
FLOYD C. HOLMES	HILARY ASHBY BUSH	EDWARD T. DONAHUE	ROY W. DONAHUE
<i>Hemple</i>	<i>Springfield</i>	<i>Mt. Washington</i>	<i>Mt. Washington</i>
Leader			Alternate

QUESTION

Resolved that the United States should enter the Permanent Court of International Justice

SCHEDULE

1. Kansas State Teachers' College, Pittsburg, March 27, at Liberty
Vote of audience victory for Jewell
2. Missouri Wesleyan College, April 8, at Cameron. Single expert judge decision for Jewell
3. Washburn College April 11, at Liberty. Unanimous vote of three judges for Jewell
4. Friends University, April 15, at Liberty. Single expert judge decision for Jewell
5. Des Moines University, April 19, at Liberty. Single expert judge decision for Des Moines
6. Intra-mural debate with Jewell negative, April 22, at Excelsior Springs. Two to one for negative
7. Second Intra-mural debate, May 6, at Liberty.



VARSITY NEGATIVE DEBATE TEAM

HARRY NICHOLAS HOWARD	WILLIAM E. PARTEE	HAROLD ROBERTS	W. PREWITT EWING
<i>Excelsior Springs</i>	<i>Vandalia</i>	<i>Excelsior Springs</i>	<i>Nevada</i>
Leader and Captain of squad			Alternate

QUESTION

Resolved that the United States should enter the Permanent Court of International Justice

SCHEDULE

1. Nebraska Wesleyan University, April 11, at Lincoln, Nebraska.
Two to one decision for Jewell
2. Intra-mural with affirmative, April 22, at Excelsior Springs.
Two to one victory

The following debates are to be held after the TATLER goes to press

3. Missouri Wesleyan College, May 8, at Liberty.
4. Mercer University, Macon, Georgia, at Atlanta, Georgia, before the Southern Baptist Convention
5. Colgate University, Hamilton, New York, May 27, at Milwaukee Wisconsin, before the Northern Baptist Convention
6. Second Intra-mural debate, May 6, at Liberty



FRESHMAN DEBATE SQUAD

HAROLD ROBERTS <i>Excelstor Spings</i> Leader	HILARY ASHBY BUSH <i>Springfield</i>	W. PREWITT EWING <i>Nevada</i>	ROY W. DONAHUE <i>Kansas City</i> Alternate
---	---	-----------------------------------	---

QUESTION

Resolved that the United States should enter the Permanent Court of International Justice

SCHEDULE

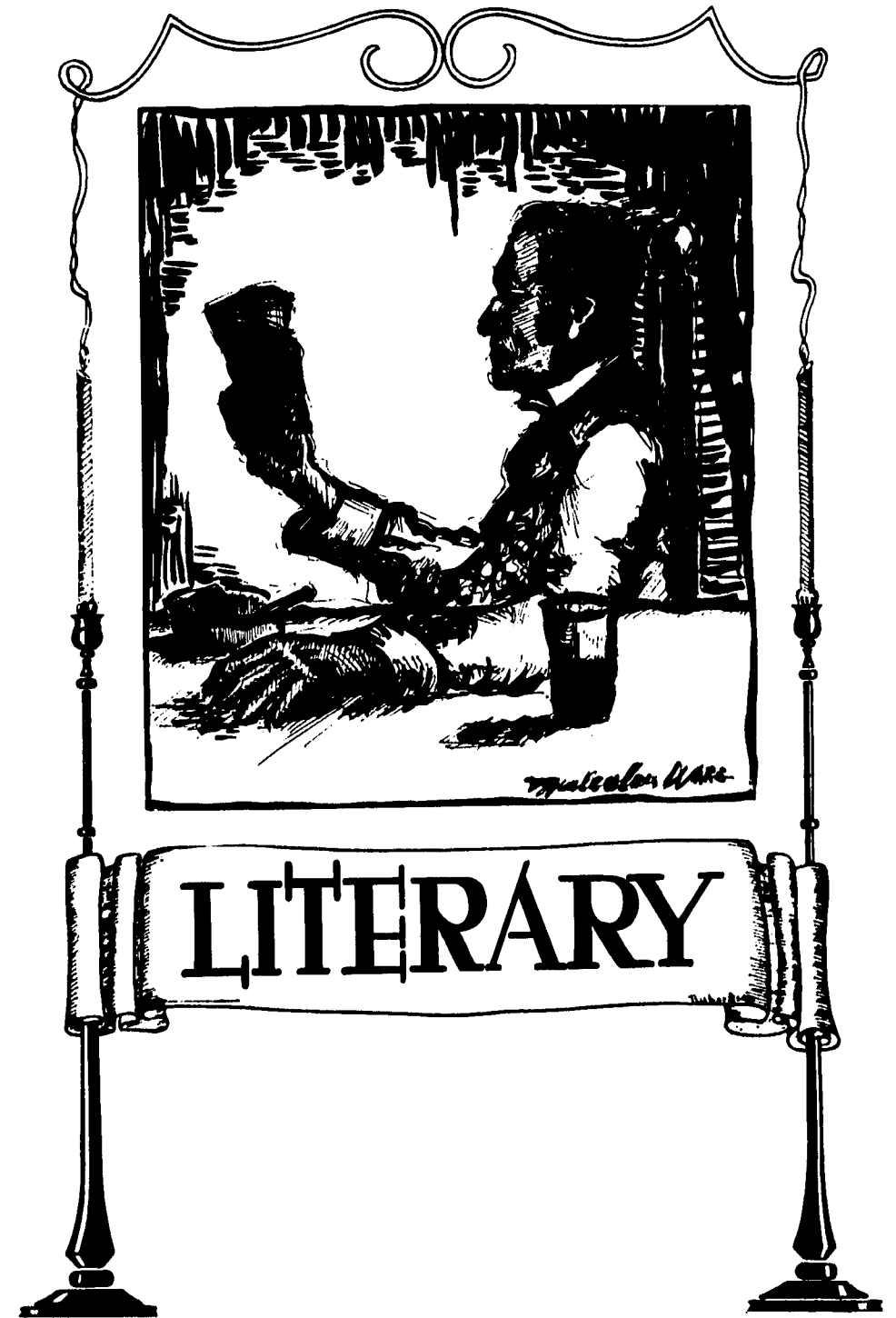
1. Junior College of Kansas City, February 27, at Liberty. Unanimous decision for Junior College
2. University of Missouri, February 29, at Liberty. Expert single judge decision for Jewell
3. Junior College of St. Joseph, March 7, at St. Joseph. Unanimous decision for Jewell

JEWELL SOPHOMORE-FRESHMAN DEBATE TEAM

FLOYD C. HOLMES <i>Hemple</i>	ROY W. DONAHUE <i>Mt. Washington</i>	EDWARD T. DONAHUE <i>Mt. Washington</i>
----------------------------------	---	--

SCHEDULE

1. Junior College of Kansas City, February 27, at Kansas City. Two to one decision for Jewell
2. Kansas City School of Law, February 28, at Kansas City. One to one decision; victory accredited to Law School.
3. Junior College of St. Joseph, March 7, at Liberty. Two to one for Junior College:



Jewell's Seventy-five Years of History

BY ROBERT E. KEOHANE

Concisely, yet accurately, epigrammatic in form, but true, the words "Deo Ficus Labora" epitomize the history of William Jewell College throughout its existence. The dreams and prayers, the faith and hopes, the sacrifices and labor of thousands of men and women find expression in this institution. Born in the pioneer period, scarcely surviving fratricidal strife, revived and cherished in the days of reconstruction, and slowly but certainly growing in its ability to serve, William Jewell may well celebrate its seventy-fifth birthday by a reconsecration to the ideals of its founders and a renewed determination to fulfill its mission of education.

Although it is rather to the future than to the past that William Jewell must and ought to look, there is much that we may learn from the story of our College. The labors of Dr. William Jewell to found this institution and to provide a suitable building in the form of Jewell Hall caused his death. The loyalty of the presidents and faculties for seventy-five years has been notable for self-sacrifice. The agreement of Professors Rothwell, Eaton, Emerson, Semple and Clark to "accept as remuneration for their services whatever sums might be justified from year to year by the income of the college" is a proof of the devotion of the faculty. The service which, for thirty years, President Emeritus John Priest Greene rendered the college, represents the care which William Jewell's presidents have for the institution.

Within the pages of the *Tatler* only a sketch of the history of William Jewell can find a place. The college officially dates from February 27, 1849, when its charter was granted by the legislature and approved by the governor of Missouri. However, the initial steps for founding an institution of higher learning for young men and in particular for candidates for the Christian ministry were taken by the Missouri Baptist General Association as early as 1835. The first definite action came in 1843 when Dr. William Jewell of Columbia, Missouri, made to the General Association a conditional offer of \$10,000 in lands as a nucleus for the building and endowment of the college. In 1848 the offer was accepted and soon after the charter was secured. In August, 1849, the subscribers to the endowment selected Liberty as the location for the college and unanimously agreed that the name of the institution should be William Jewell College.

The college was opened to students (in the old Liberty Academy) on January 1, 1850, with Reverend E. S. Dulin as Principal and Professor of Ancient Languages and Rev. T. F. Lockett as Professor of Mathematics. In September the school was transferred to the basement rooms of the Second Baptist Church where it remained until its removal to Jewell Hall. In the meantime the foundation of that building had been laid and, by the summer of 1853 the structure had advanced toward completion so far as to admit of occupancy and use. It was not finally completed until 1858. The building was begun under the immediate superintendence of Dr. Jewell, who died in August, 1858, from the effects of exposure to the intense heat. Just here it may be noted that, owing to the lack of funds William Jewell survived the session of 1852-53 as a private institution.

In 1853, Reverend R. S. Thomas, D. D., became president of the college, and, two years later, the first graduating class composed of five men, received Bachelor of Arts degrees. Again financial difficulties caused the suspension of

the college and it was not until the fall of 1857, the college reopened under the presidency of William Thompson, L. L. D. In 1861 the college found it advisable to suspend operations because of the unsettled condition of the country.

Although a few sources of a Jewell student's life in the fifties are available, an attempt to portray that life may not be amiss. The course of study, properly graded from year to year, included the Latin and Greek languages; mathematics, including algebra, geometry, trigonometry, analytic geometry and integral calculus; natural philosophy, with lectures and experimental illustrations; chemistry; geology and mineralogy; mental philosophy; logic; rhetoric; ethics; history; constitutional and international law; political economy; and the evidences of Christianity.

Among the extra-curricular activities may be mentioned the two literary societies, the Philomathians, founded in 1853, and the Excelsior, organized in 1857. Social affairs in the late fifties included dances and the shows which came to Liberty occasionally. The chief sport among the college boys, then as now, was football. However, the game was played under very different rules and competition was, not between classes, literary societies, or colleges, but between the town and college boys.

During, and immediately after the Civil War the condition of the college was almost hopeless. Not until 1867 was it thought safe to reopen the institution under the presidency of Rev. Thomas Rambaut who devoted the first year to the reorganization of the college and the increase of its endowment. In the following year there were five members of the faculty and eighty-one students. Rigid examinations were held twice a year and graduation depended, not on the time of attendance, but entirely upon the student's standing at these examinations, taken in connection with his general class standing. During the session of 1872-73 many students were compelled to leave college because of the financial panic then prevailing. As a remedy for this situation the ministerial students organized a club to conduct the boarding department on the most economical basis and to assist, as far as possible, their more needy fellow students.

In 1873, several changes in personnel of the faculty occurred and in 1874 Dr. Rambaut resigned on account of ill health. The office of president remained vacant until the summer of 1892. In the meantime, the affairs of the college were administered by the faculty, acting through a chairman. Professor William R. Rothwell was chairman from 1873 to June, 1883, and Professor James G. Clark from that date until June, 1892. The financial affairs of this period were in the hands of Lewis B. Ely, of Carrollton. But previous to his election as financial agent in 1887, the Reverend W. Pope Yeaman, D. D., was appointed Chancellor of the college and for two years succeeded in enlarging the endowment.

In June, 1892, Dr. John Priest Greene was elected President of the college. By that time the productive endowment had been largely increased and several buildings erected, including Old Ely Hall. The faculty of the college and preparatory department consisted, at that time, of twelve men and the student body numbered 250.

The period 1892-1924 has been one of great increase in endowment and equipment, enlargement of the student activities and of gradual yet constant achievement.

Preeminent above all other men in this period of the college history stands John Priest Greene. Throughout his administration of thirty years Dr.

Greene held the college to the primary purpose of its establishment, namely, the thorough literary and scientific training of young men for Christian service.

Under Dr. Greene's administration the college enrollment increased from 100 to 400 students. The first graduating class included fourteen members, the class of 1913 numbered fifty. The endowment has been multiplied many times, increasing from a very small amount to a sum approximating \$1,000,000. Brown Gymnasium was built at a cost of \$10,000; the first decade of the twentieth century saw the erection of the Carnegie Library. New Ely Hall was built in 1911 and, after the burning of Wornall Hall, the modern science building, Mars-ton Hall, was erected.

Besides the usual additions to the college library was the acquisition of the private library of Charles Haddon Spurgeon. The Spurgeon collection, as these 7,000 volumes are known, is the only complete library on Puritanism in existence. The William Jewell Press began as a small bindery in February, 1914, has expanded so that at present it takes care of the entire printing of the college.

A broadening of the curriculum in accordance with the highest educational standards can be noted among the achievements of the last thirty years. New departments have been added and old ones expanded so that today there are twenty members of the faculty teaching courses leading to the A. B. degree. The high quality of the scholastic work done in William Jewell is attested by the recognition accorded the college by the Association of American Universities.

But perhaps it has been among the students that the most interesting and significant changes have taken place. The rise of fraternities and the decline of the formerly omnipotent literary societies, the beginning and organizing of intercollegiate athletics, and the establishment of student publications have been among the most significant changes.

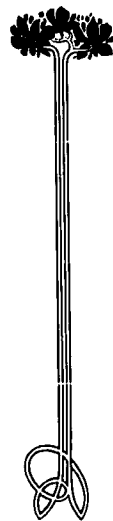
The first fraternity to establish a chapter in William Jewell College was the Phi Gamma Delta fraternity which was installed here in 1816. The Kappa Alpha fraternity followed in 1887; the Sigma Nu in 1894; the Kappa Sigma in 1897; and the Zeta Chi, the local fraternity, in 1916. The honorary debating fraternity, Pi Kappa Delta, is the one honorary fraternity in William Jewell College. The Iota Pi sorority and the T. N. T. Club are the women's social organizations.

Closely connected with the change has been the decline in the old literary societies in number and influence and the founding of clubs for students interested in special fields. The Philomathic Literary Society is still in existence; the Excelsiors, however, disbanded in 1922. The Keats and Khem clubs represent, to some extent, the aspirations of students for knowledge and training to be gained from reports on and discussions of subjects only touched upon in the class room. The Scribblers, the International Relations Club, and the Volunteer Band represent this tendency.

Of great importance in the life of the school have been and are the intercollegiate athletic contests in which William Jewell participates. Debate also has been and is an important activity of the college. An unfortunate tendency to be noted here, however, is that toward increased specialization, called forth by the inter-collegiate nature of these contests and resulting in intense training in sport and forensics for a few and a lack of training for the less competent.

Student publications, too, were introduced under Dr. Greene's presidency. The William Jewell Student, founded in February, 1894, as a monthly magazine has become, after a number of changes a four-page, five-column newspaper

Paper and Personality



THE letter paper you use does express your personality. The ones to whom you write unconsciously judge you by it. It pays therefore to use great care in the selection of it. Good paper is high but it can never cost as much as it comes to in the long run. We shall be glad to help you make a selection from our stock and to give you the benefit of our advice. We will charge you no more for the paper than is consistent with a sound business policy.

We are now printing the Tatler (annually); the William Jewell Bulletin (12,000 monthly); the William Jewell Student, (weekly); besides a great amount of commercial job work. We specialize in high class printing of all kinds, especially book work. Let us assist you in planning your book or other job work. We assist about twelve students through school each year. You not only help us but you help students through college.

We are at your service. Call upon us for prices and advice. We shall be pleased to serve you.

William Jewell Press

Harvey J. Ray, Mgr.



published weekly during the school year. The Tatler, the college annual, was founded in 1905 as a small paper-bound volume; its history has also been one of improvement and enlargement.

The sketch of the college history may be concluded with a brief note of the administration changes of the last five years. On January 1, 1920, Dr. Greene resigned his office as president and was succeeded by Dr. D. J. Evans, who for many years had been Dean of Biblical Literature and Religious Education. Dr. Evans served until September 1, 1921, when he resigned to become pastor of the First Baptist Church of Kansas City Mo. Dr. Greene consented to serve again as President until a fitting successor could be found.

On March 29, 1923 the trustees of the college elected Dr. Harry Clifford Wayman of Louisville, Kentucky, as President. He was formally inaugurated November 22, 1923. Under his leadership the college may look forward to many years of material expansion and glorious achievement in its great work of education.

I Adore Chapel

I adore chapel:

For "the few words for our meditation" this morning.
For Harry E's two-fingered symphonies.
For the bed-time stories by Madsen.
For the gentle "Sh-sh" and "Let's go" of the upper-classmen
For the invitations of the brethren to their seminary.
For the announcements I hear there.
For the lessons I try to get, and don't.
For the cuts I get if I don't go.
For the wonderful display of the Jewell spirit.
For its variety!

I adore chapel:

The American School of Osteopathy
And Andrew T. Still College of
Osteopathy and Surgery
Combined

Offers a four years' course of instruction leading to the degree of D. O.
Five school buildings with equipment costing over a half million dollars.
Eight hundred fifty students.
Osteopathy is a legal system of medicine in every state in the Union.

For Catalogue Address
Dr. George M. Laughlin, Pres.
Kirksville, Mo.

Something for Everybody



The Most for Your Money

Your Shoes
Should be Fitted
Right

JACK PETTY

Cash Shoe Dealer

Liberty, Missouri

Liberty Book Store

"Everything for the Student"

East Side Square

"They Come Miles to Myalls"

CLOTHES

For College Men Who
Stay Young

For College Misses—Their
Mothers and Sisters

Society Brand Clothes

Coats, Accessories

Dresses



Myall & Myall
EXCLUSIVE SHOP
FOR WOMEN - FOR CHILDREN

Page 134

The Scientific Attitude

A ONE ACT PLAY

Time---Early morning.

Place---Dr. Smith's office.

[Dr. Smith is seen seated at his table surrounded by mental test sheets.
Mr. Multimillions enters but Dr. Smith continues to work.]

Mr. Multimillions: Good morning Dr. Smith.

Dr. Smith (cordially): Good morning! Good morning, Mr. Multimillions. Do excuse me for my seeming lack of cordiality. You see I thought it was my stenographer. So glad to see you. Is it within my power to do anything for you this morning?

Mr. M—: Hearing that you could perform wonders in mental stunts I am coming to you with a peculiar problem. Is it true that you can measure the mind?

Dr. Smith: My dear Mr. Multimillions the possibilities of science are unthinkable and abstractly simple. Many think the mind cannot be fathomed but in reality it can be measured as can the length of this room.

Mr. M—: I'm truly glad to hear you say that. Now you know I have twin daughters in William Jewell.

Dr. Smith: Very brilliant girls they are, too, Mr. Multimillions. Full of the spice of life.

Mr. M—: I have decided to entrust the bulk of my business and property to the more intelligent of the two. Since their grades throughout the college course, have remained practically the same I am at a loss to know which girl deserves the trust. If you can solve this problem for me my usually large contributions to the college will be doubled. In fact, if the thing is done right I will consider building your much needed gymnasium.

Dr. Smith (gushingly): My dear Multimillions it can be done with ease, to your complete satisfaction. Be assured too, that scientific methods of procedure will be used. The business disability, lung capacity and spendiferousness of both girls can be accurately measured.

Mr. M—: I would like to have this done as soon as possible. When do you think the tests could be given.

Dr. Smith: Set your own time my dear Multimillions. Set your own time.

Mr. M—: A week from this morning then, let us say.

Dr. Smith: For a thorough test it will take an entire day. If that suits your convenience we had better plan for a day.

Mr. M—: That is very good. Say we begin a week from this morning then, at 9 o'clock.

Dr. Smith: That's entirely satisfactory.

Mr. M—: Good day, then.

SCENE II

Time---9 o'clock a week later.

Place---Dr. Smith's office.

[Enter Dr. Smith and Mr. M— with arm loads of psychological apparatus, which they deposit on a table.]

You say it really takes all this fol-de-rol to find the intellect of a person! What is this mouse trap affair may I ask?

Page 135

The New Theological Institution

(Founded 1825)

A SCHOOL FOR LEADERS

Courses leading to the B. D. and S. T. M. degrees. Special provision for post-graduates. Many opportunities for missionary, philanthropic and practical work for self support. Harvard University offers special free privileges to approved Newton students.

Courses in Religious Training For Women

A course in religious education, made of required and elective work, is offered at Newton for women who have a college degree. Ninety hours for graduation.

A beautiful and commodious home has been secured for women students. The expenses will be kept as low as possible. No tuition fees.

Autumn Term Opens September 24th

Address, PRESIDENT GEORGE E. HERR

Newton Center, Mass.

The Southwestern School of the Prophets

SEMINARY HILL, TEXAS

The Southwestern Seminary is nearing the close of its sixteenth session with the very finest conditions, a full faculty in all lines; teaching Theology, Religious Education, Missionary Training, Gospel Music, and so on; student enrollment of 649 for this year, great practical work department, with the finest reports from the work of students during the year; an extension department with an enrollment of 964; a happy band of professors and students preparing themselves for the ministry in preaching, teaching, singing and kingdom work; more than 125 preachers with pastorates; tides of spirituality and evangelism running high; a great brotherhood working together in the spirit of Christ to prepare for the best possible service.

Students can enter at the beginning of each term, every two months from September 17th.

For further information write to

L. R. SCARBOROUGH, D. D., President

Seminary Hill, Texas.

Dr. Smith: That is a blind alley puzzle which measures kinesthetic imagery and perspeuity of the brain.

Mr. M—: Oh, I see! But all this colored paper looks like kindergarten material.

Dr. Smith: My dear Multimillions, do you know that many bankers, lawyers and even aeroplanists are ignorant of the most vital thing in life---namely the cognomen of the one hundred eighteen colors? That paper is a test of color ability.

Mr. M—: This silver tube and piece of raw beef steak look interesting.

Dr. Smith: Yes, they all have a very specific purpose.

[Enter Dad Bowles, time keeper for occasion and Dr. Fleet expert mathematician for occasion.]

Dad Bowles: Well, I have everything ready. I regulated my watch so it would neither gain nor lose even a fraction of a second, as you requested, Dr. Smith.

Dr. Smith: I trust you have your necessary apparatus, Dr. Fleet. Your table of logarithms and square root?

Dr. Fleet: I have everything, gentlemen, including my chart for plotting curves. Dr. Parker is bringing my adding machine.

[Dr. Parker enters with thermometer, barometer and adding machine. He proceeds to busy himself about the room. He is followed by Dr. Rothwell and the Multimillions twins who are walking at a measured gait. A nurse brings up the rear.]

Dr. Smith: Ah, Dr.! Both of our girls have the same temperature; both have their emotions tuned to the same pitch I suppose?

Dr. Rothwell: Dr. Smith the girls are as fit as a fiddle for this little test, one of them as fit as the other. For an entire week both have breathed the same air, brushed their teeth the same number of times and eaten the same kind of breakfast food. They have even walked to your office at the same gait.

Dr. Smith: Very good. Now please adjust their chairs properly for writing, Nurse. (She does so). We want 5 per cent more light from the north window. Adjust that properly, Nurse. (Dr. Fleet figures up 5 per cent area of the window after which the adjustment is made). Now, girls, be seated with feet exactly 6 inches apart. Hold out your wrists please for the spy gomanometer.

Mr. M—: I should like to know the purpose of that instrument, Dr., explain it more fully, if you please.

Dr. Smith (soothingly): This instrument is more commonly known as a truth tester, my dear Mr. M— and-----

Mr. M—: Take it off at once. I did not come here to have it insinuated that my daughters were liars.

Dr. Smith: But you know, Mr. Multimillions, "the truth shall make you free" and---

Mr. M—: The devil can quote scripture for his purpose. I tell you again that this demands explanation.

Dr. Smith: My dear Multimillions, you know that because the truth makes for freedom, these truth testers will secure perfect freedom and liberty of the individual so necessary for a successful test. It is merely a mechanical device which you can't interpret in the usual manner.

[The girls giggle and nudge each other. One of them winks at her father, whereupon he seems to relent.]

Ellington & Walker
MEAT MARKET

Wholesale and Retail
EAST SIDE OF SQUARE
Phone 97, Liberty, Mo.

McKee & Ayers Cafe

Quality -- Quantity -- Service

Always Open Late
Phone at Your Service

Chases

Specialize on Chocolates & Chocolate Bars

"Taste and See Why"

Chase Candy Co.

St. Joseph, Mo.

BUILD A HOME
On Golf Hill

Overlooking a famous 18 hole
golf course in a beautiful Coun-
try Club District of 500 acres—
restricted. All public utilities
installed. Address

GOLF HILL PROPERTIES

Excelsior Springs, Mo.

To William Jewell
on her 75th Birthday

We Offer Our Best: Both of Good
Wishes and Groceries

C. O. Shafar

East Kansas

Liberty, Mo.

Forward or Backward?

Unless you look forward now, it may be your portion to look back-
ward in years to come --backward to wasted time and lost opportunities.

Make the most of the present and capitalize these efforts by
making regular, persistent and systematic deposits in the

FIRST NATIONAL BANK

Mr. M—: Very well, Dr. Smith.

[At this point Mr. Multimillions and all the assistance except
Dad Bowles, Dr. Fleet and the nurse file behind a red curtain and stand
on red cushions to secure perfect silence. Dr. Fleet uses a non-skid
pen and wears leather bands when he writes and Dad Bowles has put
a muffler on his watch for the same reason.]

Dr. Smith (handing each girl a test sheet): Now, girls, when Dad pushes
a red button and your right arm is electrified you will begin to write. Write in
the blank spaces on your paper with your pen. It might be well to state that
you may use your brains as an aid in solving difficult problems. Please record
reaction time, Dad.

[Silence but for scratching of pens. 2 hours elapse]

Dr. Smith (after taking up papers): The next test is a color test. Shut
your eyes. (They obey) Open them when I look at the next pennant to the
light blue one on the left side of the door, and write upside down and backward
the names of the one hundred eighteen colors shown there.

[They make a stagger at it.]

Dr. Smith: Now in order to test your business ability I have a very im-
portant test. Speed and accuracy are highly important. When Dad gives the
signal run to the Physics lecture room and gather up five stray thoughts I left
there; proceed to the Dean's office where you get three excuses, as best you can
embezzle them, from Dr. Fleet's assistant; thence to the treasurer's office and
get my last pay check, tipping the stenographer a dime; forward again to the
Biology laboratory and collect three nerverium nebiscoes; then start back and
greet Dr. Rider midway between Marston and Jewell Hall, giving him the nibis-
coes; thence back here. If you have no dime rustle for it the best way you can.

[The pistol shot sounds and there is a rush from the room. 15
minutes elapse after which both girls rush back and hand Dr. Smith
fragments of something not distinguishable. Their once beautifully
marcelled hair is disheveled. Their hearts are beating so that
several minutes are required for recuperation]

Nurse, please adjust the silver tube for salivary test. (She adjusts a sil-
ver tube in the mouth of each so that the saliva flows out of the mouth into a
measuring beaker. Dr. Rothwell appears from behind the red curtain with a
chunk of raw beef steak on a platter, holds it up enticingly before the two girls
which teases the salivary glands to produce a flow of saliva. This is duly
measured and results recorded.)

Dr. Smith: Now for our next little test. (He brings forward a large ward
robe trunk). When I open this trunk you are to peruse the contents for four
minutes. Then it will be closed and you will write down the name of all the
articles you remember in lyric verse and in two foreign languages.

[A long list of other tests follow. At four o'clock the two girls
limp from the room with doctor and nurse in attendance.]

SCENE III

Time---2 days later.

Place---Dr. Smith's office.

[Dr. Fleet is seen seated at the table with confused piles of sta-
tistics piled all about him. He is figuring. He finally lays down

Philip Fraher & Son

Dealers In
Boots, Shoes
and Rubber Goods
West Side of Square
Liberty Missouri

J. C. SIMMONS

Prescription Druggist
Fine Toilet Articles of Every
Description

Simmon's Favorite Cream makes
the skin soft as velvet. Excellent
to use after shaving.

West Side of Square

Congratulations

to

William Jewell

On Her 75th Anniversary

Trade at the

CO-OP

It Pays

Liberty Tribune

Something for Everybody

The Most for Your Money



"It is Wise to
Insure."

Real estate
Rentals. Insurance,
Bonds and
Investments.

E. D. MOORE AGENCY

PERKINS & MCGINNESS

DRUGGISTS

AnSCO Films, Spalding Baseballs, A.

D. S. Supplies, Nyal Remedies,

Nunnally's Candy

'Phone 58

his pencil, wipes his brow and sighs exhaustedly]
Dr. Fleet: Thank goodness, these statistics I've worked on for 40 hours
are finished.

[He reaches for the telephone.]

"Hello Central! Give me number—please. . . . Hello, Dr. Smith,
I'm through with these blamed papers and wish you'd come up and take them
off my hands.

[5 minutes elapse and Smith rushes in without coat or hat]

Dr. Smith: What was the outcome? I've guessed the I. Q. at about 115.
Must have been a pretty close race. Just think, perhaps this means a new
gymnasium for William Jewell.

Dr. Fleet: Don't fret. We won't get a new gymnasium on this data.
This is the decisive result. Twin No. 1, I. Q., 60, mental age 10. Twin No. 2, I
Q., 60, mental age 10. Both are found to be mental defectives.

[Dr. Fleet and Dr. Smith fall on each other's necks and weep.

When the tears of each revive the other they resume the conversation.]

Dr. Smith: This test shows a whole faculty may be deceived in estimat-
ing a pupil. Only to think the Multimillion twins have been with us 4 years
and we never guessed that they were next to imbeciles.

Dr. Fleet: That's a small matter beside loss of our new gymnasium.

Dr. Smith: We must never let Mr. Multimillions know these strange
truths, however, or let it get noised about for the public ear.

Dr. Fleet: It would ruin the college.

Dr. Smith: I think that no one but us need ever know.

Dr. Fleet: But Mr. Multimillions insists upon seeing the figures.

Dr. Smith: That needn't cause any trouble. No one but a chosen few
could ever untangle or interpret these figures. I had to use all the books on a
5 ft. shelf to do it myself. Thank goodness educational measurements and men-
tal tests can be read only by an inner circle.

College Pep

By BRUCE EARLY

What is College Pep? It is an abstract quality or attribute found where
men and women gather to go to school. It is a spirit of interest and liveliness
found in the students and faculty on the campus and on the athletic field.

This spirit cannot be seen, heard, touched or smelled, but its presence can
always be detected by the actions of those who possess it. This college pep is a
wonderful thing and it makes its possessors do various things. It is this spirit
that makes a man shout and sing until he can't talk above a whisper; it makes
him stand in a snowy blizzard to watch twenty-two men fight over a small ob-
long ball. This same spirit leads him to a crowded gymnasium to watch ten
men throw a leather ball around over a court. Again this mysterious thing
called pep makes men don night clothes and parade the streets, shouting, sing-
ing and beating tin cans, a thing which no right minded person would think of
doing.

It is our same old friend, pep, that ducks and paddles and compels the wear-
ing of the green. This spirit can be neither bought nor sold, it can only be ac-
quired like the measles, that is by coming in contact with it and taking it. But
once it gains possession of a person it remains always. It is like many other
things because it grows stronger and better with age.

Meet your friends at the Liberty Cafe. Bring your friends there.
Make other friends there. Give them a treat.

LIBERTY CAFE

"The Hang Out for Boys and Girls"

Trig L. Nutter, Prop.

Progressive Shoe Parlor

E. L. JACKSON

Telephone 81

Liberty, Mo.

McArthur's

5-10-25-50 cent store

East Side Square

Liberty, Mo.

WE OFFER YOU

High Grade
Building Material
and
Prompt Service

TRY US

H. R. Banks Lumber Co.

Phone 389

Liberty, Mo.

The Southern Baptist Theological Seminary

Louisville, Ky.

Tuition free. Moderate cost. Session
opens September 23, 1924.

SPECIAL FEATURES

English Bible courses, devoting 9 hours
per week to careful study under professors
who are expert in the original languages
of the scriptures.

School of Theology.

School of Comparative Religion and Mis-
sions.

School of Sunday School Pedagogy.

School of Christian Sociology.

School of Church Efficiency.

Catalogue giving complete information
sent upon request.

Address

E. Y. MULLINS, Pres.
Norton Hall Louisville, Ky.

Globe Werincke

Book Cases,
Rock Flowers

Stephens Furniture Company

PHONE 68

R. T. STEPHENS

ATTORNEY-AT-LAW

Telephone 63

Excelsior Springs, Mo.

"Mastery" vs. "Masterful"

By R. P. RIDER

Some critic has said that a person more surely manifests the quality of his learning, in his use of the small, apparently inconsequent, words that we commonly call particles, than he does in his use of the "big," apparently, more learned terms.

That those who write for the public ear, have a responsibility beyond that of merely presenting ideas, and imparting instruction, will be acknowledged by all. They are they who are, to a great degree, responsible for public tastes in English expression;—and we are justified in expecting from them a style and force in writing that we can, at least, emulate to our advantage.

With persons of correct taste, "newspaper-English" is a term of opprobrium. It ought not so to be,—and would not, if the competent editors of our periodicals,—daily and weekly,—like those who edit our best monthly and quarterly magazines, would combine the office of censor with that of editor.

These paragraphs are written in the interest of consistency in the use of words in our current literature, and the partially synonymous terms that serve as our subject, offer a familiar example.

In the use of words between which a certain degree of synonymy exists is offered an opportunity to manifest nicety of taste and correctness of judgment,—each, a quality desirable in a writer;—and quite necessary, if he would have logical force and lucidity of style.

There is a growing tendency, particularly among our younger writers,—I cannot say, to use the two words under consideration interchangeably, as would be admissible with true synonyms.—but to use the latter one illogically, i. e., when the former would much better express the idea desired. The two words are, in a very limited sense, synonymous; but the sinister force that infers in the term, "masterful," and is, in fact, dominant therein, is not recognized at all by best usage, in the word, "masterly." In such sentences as the following:—"He performed the duties of the office in a masterful manner;" "He delivered two masterful addresses during the day;" The writer really though unintentionally, says, "He performed the duties in an arbitrary way," and "He delivered two dictatorial—bossy—addresses." For the sinister or dictatorial idea predominates in "masterful," the idea of efficiency, in "masterly."

These inherent differences in the force of words can be recognized and respected without laying the writer open to the dreaded charge of being either meticulous or finical. We often find an indescribable charm in the style of a writer, and cannot clearly decide in what that beauty consists; but if we could, in nine cases in ten, we should find that it was the result of his nice appreciation of the subtle shades of meaning that words present. To the writer, the study is worth while.

Flour, Feed, Coal and Hay

HENDERSON SUPPLY CO.

½ Block W. Interurban Station Liberty, Mo.

Phone 233

The Newton Theological Institution

A School for Leaders

Founded 1825

Courses leading to B. D. degree. Special provision for post-graduates. Many opportunities for missionary, philanthropic, and practical work. Harvard University offers special free privileges to approved Newton students.

George E. Horr, D. D., L. L. D., President

Newton Center, Mass.

"Paper is Part of the Picture"

For Better Annuals

Get

Enameled paper such as used in THE TATLER '24. It has a well coated surface that takes beautiful impressions—that holds the fine tracery of the most delicate engravings—that brings out the full richness of color from process plates.

Our paper used exclusively by the William Jewell Press.

Kansas City Paper House

318-320-322 West Seventh St.

Kansas City,

Missouri

UNDER THE OLD TOWN CLOCK

24 Years of
Financial
Service

**Fidelity National Bank
and Trust Company**

Capital and Surplus, Three Million
Ninth and Walnut Streets
Kansas City, Mo.

ELECTRICAL MERCHANDISE

Purchased at an Electric Shop

Can be relied upon at all times.

Missouri Gas & Electric Service Co.

Phone 568

Buy Electrical Goods at the Electric Shop

Page 144

De Ridicule

A funny little man with a funny little face,
And a merry little man was he,
Brought a piebald horse to a great horse race
That was run on an inland sea.
And the horse was equipped like a huge, huge ship,
With a ten foot span of sail
And a bar room aft where the pilot laughed
At the rudder strapped to his tail.
Ah! the bets were bet and the steeds were set
And the barrier rose between
When the piebald nag with a huge feed bag
Ploughed forth under his own steam.
Yes the bets were bet and none knows yet
Just how it all arose,
But the piebald steed with a burst of speed
Brushed the barrier with his nose,
And fast into the deepening sea rushed headlong in consummate glee
Thus passed the first mile stone.
Till a calm upon his spirit broke and full upon his soul awoke
The calmness of the sea alone.
The skipper heaved a beer tintured sigh right in the pilots blood red eye
And sent the gunner aft
To fire a double fusillade and call the goddess to their aid
From the mast head of the craft.
The goddess came it was a shame
No other aid had she
Than a pair of spurs and cockle burrs
That were grown in Tennessee.
Beneath the pilot house the burrs, upon the port side flank the spur
Urged on the becalmed steed.
A quiver ran along the keel; the salt cured pilot at the wheel
Implored the craft for speed.
The speed it came if that's the name
You give to the gallant might
Of a veteran mount of stern account
A coursing in sad plight.
The goal was won the race was run
Yet stopped he not a whit
Till on a reef he came to grief
And foundered in a fit.


"Absurd, you say, no horse belongs upon the briny sea"
"Yes, yes" say I, No more do I in the field of poetree.

—Synonymous

Page 145

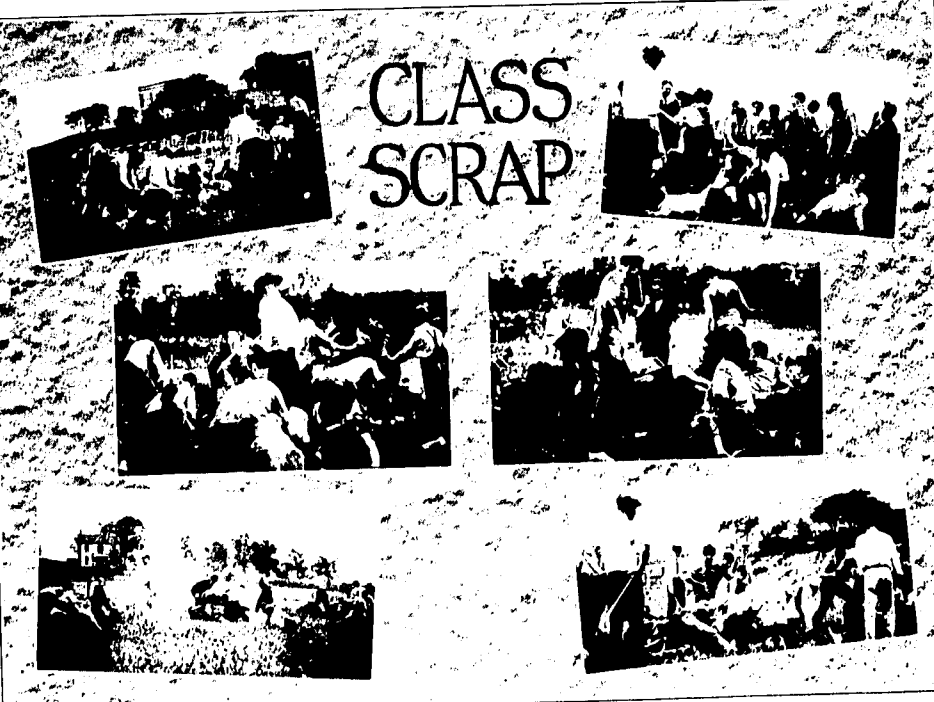
ENGRAVINGS
 MOST SUITABLE
 FOR
COLLEGE AND SCHOOL
ANNUALS

ASK US ABOUT
 OUR
 "DIFFUSED
 METHOD
 FOR VIEW SECTION
 ILLUSTRATIONS,
 SOMETHING
 DECIDEDLY
 NEW AND ARTISTIC



BAIRD COMPANY ENGRAVERS
 7TH FLOOR GRAPHIC ARTS BUILDING
 KANSAS CITY, MISSOURI

**CLASS
 SCRAP**



**DEACON
 DUBBS**



The Passing of the Horse

Alas! for the loves of yesteryear!
Our once-time true and stalwart friend
Has passed for aye, we sadly fear,
In the fateful track of the science-trend.

His furry coat like satin shone;
His eyes e'er flashed with living fire;
His ears were proof that well were known
Our simplest tho'ts, our fond desire.

His speed as he spurned the grassy pave
Was like the wind, untrammelled, free;
His motion, the sway of th' ocean wave
As it proudly rolls o'er the summer sea.

He stood four-square on legs of bone,
Well-sinewed, true, and neatly tense;
And his heaving chest-his chest alone,
Was a bulwark strong, a sure defence.

His friendly neigh they now replace
With the threat'ning "honk" of the motor-car.
To have shielded our friend from this last disgrace,
We'd have summoned the powers from near and far.

We'd have stabled him safe in a golden stall,
And given him pearls, galore, to eat;
For bridle we'd have used a silken thrall,
And with silver have shod his faithful feet.

His friendship ever was strong and leal-
Without the lure of a sugar-plum,
A fond co-partnership he'd feel,
And to our loving beckon come.

But alas! alas! as the world moves on,
We elders might well be left behind
To utter sighs o'er times now gone,
If such were our gloomy bent of mind!

But, nay! We'll say if our friend must go,
And no helpful car comes kindly by,
We'll walk, sans horses, both to and fro,
Still thankful-they've left us both earth and sky.

William Jewell College

Liberty, Missouri

William Jewell College is ideally located, being only twelve miles from Kansas City, and easily accessible from any part of the state.

The equipment is excellent. The science laboratories are especially well equipped. A Carnegie library of 32,154 volumes is situated on the campus.

The buildings are ideally located on the large hill in the center of the campus of 100 acres. The College is a Christian College founded and supported by Missouri Baptists. It has breathed forth a Christian influence over the Middle West during its long history of three-quarters of a century.

The faculty is composed of men who are experts in their departments and are graduates of the standard universities of America and Europe. The College is approved by the Association of American Universities. Regular courses leading to the A. B. degree are given. Accredited two-year pre-professional courses for Medicine, Law, Engineering, Commerce and Agriculture are offered. Also, courses are given in Coaching for those desiring to become athletic directors and official coaches. The Educational Department prepares teachers for life certificates. Complete courses in instrumental and vocal music and in musical theory are available in the Conservatory department.

For catalogue or other information, address,

H. C. WAYMAN, President.



*KAPPA ALPHA
HOUSE*



*PHI GAMMA DELTA
HOUSE*



*KAPPA SIGMA
HOUSE*



*ZETA CHI
HOUSE*



*SIGMA NU
HOUSE*



*GIRLS'
DORMITORY*

ESTABLISHED 1888



Bottled By

**Excelsior Springs
Mineral Water & Bottling Company**
Excelsior Springs, Mo.

Phone 129

Phone 129

Berkeley Baptist Divinity School

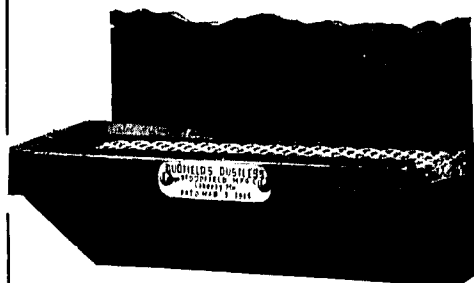
Standard theological courses leading to the degrees of Bachelor of Divinity and Master of Sacred Theology—Only Baptist Theological School for the ministry on the Pacific Coast—Modern equipment; metropolitan advantages; ideal climate; seat of University of California.

For Catalogue Address

Pres. Claiborne M. Hill, D. D.
2606 Dwight Way, Berkeley, Calif.

Dudfield's Dustless

All metal crayon trough and eraser cleaner should be installed on all blackboards.



SANITARY—because the dust falls into removable metal tray with removable wire mesh screen.

Keeps the erasers out of the dust
A slight rub keeps the eraser clean

For Prices Address

Dudfield Mfg. Co.
Liberty, Mo.

Page 152

The William Jewell Calendar

SEPTEMBER

- Sept. 1 Classification.
- Sept. 2 Scene I. Place: near the Baptist church. Time: about nine p. m. Personnel: twenty freshmen; twenty-one sophomores. Scene II. Place: near the river. Time: eleven p. m. Personnel: eighteen freshmen, strangely inactive.
- Sept. 4 Eighty-one and a half freshmen (the half is Rouser) barricade sophomores in Kappa Sigma, Phi Gam, and Kappa Alpha houses respectively.
- Sept. 5 Jackson carried over sack for first year men and class fight results in a draw.
- Sept. 6 The old grind starts, Freshmen appear lost, which is only natural.
- Sept. 7 Prof. Harvey deals much misery by telling freshmen what will be expected of them.
- Sept. 8 And thus the first week ends.
- Sept. 10 Fifty men report for football, and Dad assumes a permanent smile.
- Sept. 11 Dr. Wayman tells students about Elijah and Elisha.
- Sept. 12 The Hill takes on an emerald hue.
- Sept. 13 Phillips given sacred order of Ye Chilly Bath.
- Sept. 14 First year co-eds purchase green bands, but a few prove absent minded.
- Sept. 15 Absent minded freshman girls given the proverbial liter.
- Sept. 20 Dad starts scrimmaging.
- Sept. 21 Howard and Hamrick give vent to five month's accumulation in pep chapel.
- Sept. 25 Moon suffers an eclipse.
- Sept. 26 Great number or embryo Sousas necessitate adoption of study hour in the dorm. "Senator" Joe Lamb stars.
- Sept. 27 Dad gets ready for Blue Jays.
- Sept. 29 Tubby Southard lifts three men.

OCTOBER

- Oct. 3 Students take time out to hear Harry Howard tell the relation of young men to public affairs.
- Oct. 4 A RED LETTER DAY: (1) Tatler day; (2) A whole holiday; (3) Joe P. resigned; (4) Soph nine defeats Freshmen, 8-2.
- Oct. 5 Wood's educated toe wins at Westminster. Score, 3-0.
- Oct. 8 Dr. Elmore shows the biology class the beauties of nature.
- Oct. 10 Seniors hold first banquet.
- Oct. 11 Ennis Davis returns from dating trip and announces the Glee Club will take an extended tour.
- Oct. 12 Big Red team defeats Tarkio 26-0.
- Oct. 16 Dr. Wayman lectures in chapel.
- Oct. 17 Dr. Wayman lectures in chapel.
- Oct. 18 Dr. Wayman lectures in chapel.
- Oct. 19 Panthers knifed and roasted, 32-0.
- Oct. 24 Co-eds decide that they have been too forward and adopt rules, with hearty approval of the faculty.

Page 153

ESTABLISHED 1888



Bottled By

**Excelsior Springs
Mineral Water & Bottling Company
Excelsior Springs, Mo.**

Phone 129

Phone 129

Berkeley Baptist

Divinity School

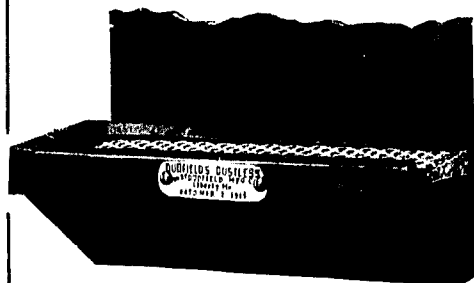
Standard theological courses leading to the degrees of Bachelor of Divinity and Master of Sacred Theology—Only Baptist Theological School for the ministry on the Pacific Coast—Modern equipment; metropolitan advantages; ideal climate; seat of University of California.

For Catalogue Address

**Pres. Claiborne M. Hill, D. D.
2606 Dwight Way, Berkeley, Calif.**

Dudfield's Dustless

All metal crayon trough and eraser cleaner should be installed on all blackboards.



SANITARY—because the dust falls into removable metal tray with removable wire mesh screen.

Keeps the erasers out of the dust
A slight rub keeps the eraser clean

For Prices Address

**Dudfield Mfg. Co.
Liberty, Mo.**

The William Jewell Calendar

SEPTEMBER

- Sept. 1 Classification.
- Sept. 2 Scene I. Place: near the Baptist church. Time: about nine p. m. Personnel: twenty freshmen; twenty-one sophomores. Scene II. Place: near the river. Time: eleven p. m. Personnel: eighteen freshmen, strangely inactive.
- Sept. 4 Eighty-one and a half freshmen (the half is Rouner) barricade sophomores in Kappa Sigma, Phi Gam, and Kappa Alpha houses respectively.
- Sept. 5 Jackson carried over sack for first year men and class fight results in a draw.
- Sept. 6 The old grind starts. Freshmen appear lost, which is only natural.
- Sept. 7 Prof. Harvey deals much misery by telling freshmen what will be expected of them.
- Sept. 8 And thus the first week ends.
- Sept. 10 Fifty men report for football, and Dad assumes a permanent smile.
- Sept. 11 Dr. Wayman tells students about Elijah and Elisha.
- Sept. 12 The Hill takes on an emerald hue.
- Sept. 13 Phillips given sacred order of Ye Chilly Bath.
- Sept. 14 First year co-eds purchase green bands, but a few prove absent minded.
- Sept. 15 Absent minded freshman girls given the proverbial liter.
- Sept. 20 Dad starts scrimmaging.
- Sept. 21 Howard and Hamrick give vent to five month's accumulation in pep chapel.
- Sept. 25 Moon suffers an eclipse.
- Sept. 26 Great number of embryo Sousas necessitate adoption of study hour in the dorm. "Senator" Joe Lamb stars.
- Sept. 27 Dad gets ready for Blue Jays.
- Sept. 29 Tubby Southard lifts three men.

OCTOBER

- Oct. 3 Students take time out to hear Harry Howard tell the relation of young men to public affairs.
- Oct. 4 A RED LETTER DAY: (1) Tatler day; (2) A whole holiday; (3) Joe P. resigned; (4) Soph nine defeats Freshmen, 8-2.
- Oct. 5 Wood's educated toe wins at Westminster. Score, 3-0.
- Oct. 8 Dr. Elmore shows the biology class the beauties of nature.
- Oct. 10 Seniors hold first banquet.
- Oct. 11 Ennis Davis returns from dating trip and announces the Glee Club will take an extended tour.
- Oct. 12 Big Red team defeats Tarkio 26-0.
- Oct. 16 Dr. Wayman lectures in chapel.
- Oct. 17 Dr. Wayman lectures in chapel.
- Oct. 18 Dr. Wayman lectures in chapel.
- Oct. 19 Panthers knifed and roasted, 32-0.
- Oct. 24 Co-eds decide that they have been too forward and adopt rules, with hearty approval of the faculty.

1901 The New Kansas City Baptist Theological Seminary 1924

"Central School of the Continent--Heart of America"
Greets With Heartiest Congratulations

1849 The New William Jewell College 1924
Missouri's Molding Mother

The Seminary's Ideals

Loyalty to Jesus
Thorough Scholarship with Practical Preparation.
Modern Methods for a Modern World.
Evangelistic Spirit and Training.
Missionary Passion, at home, abroad.

Its Achievements

Twenty-Two Years' Advancing Growth.
Acquired Assets, \$300,000.
First Baptist Seminary Department of Social Service.
Second Department of Religious Education.
Trained over 500—over 60 from William Jewell.
About 150 now at work in Missouri.

Its Advantages

Courses For Best Equipped College Graduates: B. D.
Cosmopolitan Faculty, "Every Man a Master."
Women's Training School. Other Women's Courses.
Abundant Facilities for Observation, Practice, Self-support.
Best Location, Finest Site in Country, Splendid New Buildings.
Thorough Acquaintance and Sympathy with Mid-Continent.
Graded Financial Aid for College men.

Visit Us. Our Doors and Hearts are Wide Open.

For information etc., address

President Philip Wendell Crannell, D. D. [Ottawa and Dartmouth]
Seminary Heights Kansas City, Kansas

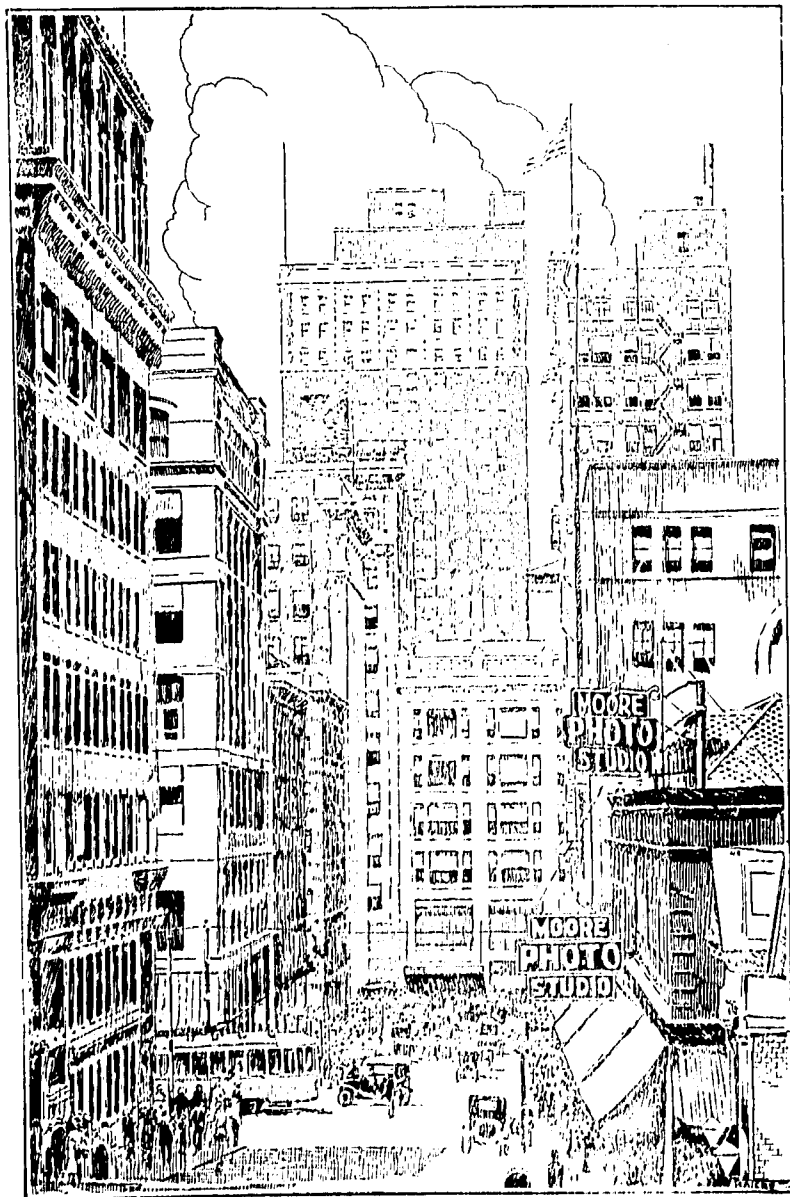
Oct. 25 Joe P. bids student body farewell. International Relations club meets.
Oct. 27 Baker wins by a drop kick, 10 to 7.
Oct. 29 Journalism class honors The Kansas City Star with a visit.
Oct. 30 Date of inauguration set for November 22.
Oct. 31 Dr. Wayman works feverishly on inauguration plans.

NOVEMBER

Nov. 1 More inauguration plans disclosed. Prof. Feezor receives visitor in form of a calf and Prof. Harvey finds barrel on desk.
Nov. 2 Prof. Harvey appears in a new suit. Mules' tenacity triumphs, 13 to 10.
Nov. 6 Scribblers organize. Great potentialities for club seen following Mrs. Harvey's dinner.
Nov. 7 Good sisters of surrounding country shower girls' dorm.
Nov. 8 International Relations club formally organized.
Nov. 9 Missouri Valley slips up on Jewell. Dad almost swears at 17 to 10 score.
Nov. 12 Dr. Wayman takes a day off. The Inauguration plans are completed.
Nov. 14 The Glee Club sings over radio. Loud speaker fails in science hall and huge crowd hear only McIntyre's voice.
Nov. 15 Y. M. C. A. meets and plans big program for following year.
Nov. 16 Jordan comes back and Kirksville takes infinitesimal end of a 20 to 0 score.
Nov. 17 Twenty-five per cent of students write home.
Nov. 18 Sixty per cent of the students write home.
Nov. 19 Harvey Ray reports shortage of stationery and postmaster appeals for an extra clerk.
Nov. 20 Delegates for National Student Convention elected.
Nov. 21 'Twas the day before etc.
Nov. 22 (Crowded out for lack of space.)
Nov. 23 No casualties reported. Emil Godfriaux informed that he is a dirty, mean old skunk.
Nov. 24 Declaration of war. Business of digging trenches.
Nov. 25 Barbed wired entanglements erected. "This don't seem like Sunday."
Nov. 26 Enemy smiles openly and opens attack. First skirmishing bids evil.
Nov. 27 Counter attacks prove disastrous.
Nov. 28 Enemy smiles openly and completes rout at will.
Nov. 29 It snows. Jewell adds snow to snow by snowing under Wesleyan 14-7. Missouri snows under Kansas. Snowstorm spends itself by snowing under the turkey. And thus ends a successful Thanksgiving Day.
Nov. 30 Morpheus rules.

DECEMBER

Dec. 1 Morpheus tightens his grip.
Dec. 2 An hour off for dinner.
Dec. 3 Variment, c'est enfer.
Dec. 4 Dad gives out basket ball equipment. Five letter men become weak in the knees after looking over first year men.
Dec. 5 Student election. Pettus elected editor. Trimble reports huge account for cigars and candy following election as business manager.
Dec. 7 Debate chapel. T. N. T.'s explode with a formal.



HENRY MOORE

Photographer

11th & McGee Streets

Makers of Photographs that Please

Official Photographer for THE TATLER Since 1911

Kansas City,

Missouri

- Dec. 8 Male guests of T. N. T.'s make trip to the city.
- Dec. 9 Wood, Justus and Southard adore Star sport page.
- Dec. 11 Basket ball scrimmage.
- Dec. 12 Dr. Wayman displays keen sense of humor at football banquet.
- Dec. 13 President fails to speak in chapel. Dr. and Mrs. Manley give insight on life in India.
- Dec. 14 Ha-a-r-r-d to take.
- Dec. 15 ? Students ? *STUDY* ? feverishly.
- Dec. 16 " " "
- Dec. 17 " " "
- Dec. 19 Glee Club trickles home.
- Dec. 20
to
- Jan. 1 Devoted to best interests of the students and faculty.

JANUARY

- Jan. 2 Delegates to the ninth quadrennial convention of the Student Volunteer Movement of the United States and Canada returns.
- Jan. 3 Miss Mildred Norcross gives recital at Eastminster Presbyterian church.
- Jan. 4 Iota Pi's head grade list. Of the thirty-nine on the Honor Roll, sixteen are members of the fair sex.
- Jan. 5 Male students return in order to assume studies. Alumni loses to College, 40 to 8.
- Jan. 8 O. Rouner goes to the Gillis on half fare.
- Jan. 9 International Relations Club meets. Basket ball season opens with a win. Culver-Stockton 18, Jewell 25.
- Jan. 14 Junior College wins from Big Red Team.
- Jan. 15 First campus opinion apropos of Leap year is published (Masculine).
- Jan. 15 Debate schedule announced. Co-ed form William Jewell Christian Association.
- Jan. 17 Bob-sledding proves dangerous.
- Jan. 18 Panthers revenge football defeat. Score, 23 to 18.
- Jan. 21 Students asked to contribute to the aid of needy Russian students all to the tune of Tipperary.
- Jan. 22 Drury defeats Jewell 24 to 13.
- Jan. 23 Big Red Team is more successful at Rolla. Score, 31 to 26.
- Jan. 24 Rolla wins, 25 to 17. Howard argues against Bok plan in chapel and then votes for it. Student body votes against it.
- Jan. 25 Drury wins again, 31 to 19.
- Jan. 29 K. C. A. C.'s warm up. Jewell defeated 49 to 18.
- Jan. 30 Khem Club holds regular meeting.
- Jan. 31 Tarkio loses to Dad's men 29 to 18.

FEBRUARY

- Feb. 1 Glee Club sings to large crowd in Liberty Baptist Church.
- Feb. 5 Summer school announced.
- Feb. 6 Madson tells bedtime stories in chapel. Dr. Fleet speaks on "Potentials" to the W. J. C. A.
- Feb. 7 Daddy Fruit relieves the monotony by an old time chapel talk. Missouri Valley 10, us 21.
- Feb. 8 Westminster smothers Jewell, 31 to 19.

Books! Books! Books! Books!

**NEW AND SECOND HAND BOOKS
OF ALL PUBLISHERS**

Where do you buy your books and are the prices right? The American Baptist Publication Society, 1107 McGee St., Kansas City, Missouri carries possibly the largest assortment of books of any house south of Chicago. We furnish some of the larger schools, seminaries and universities with all of their text books, as well as the libraries with books of general nature. The Society is now entering its second century in the book world, which places us in a position to render the best of service in handling your book needs.

DO YOU KNOW that we are centrally located in Kansas City so that when you are in the City and if convenient we should like for you to make our store your stopping place. If you happen to need a book or supplies of any kind you may phone your order as we do a large mail order business. Keep in mind there are no books published that we cannot supply you and shall appreciate the privilege of quoting you our prices.

OUR CATALOGUE OF BOOKS, CHURCH AND SUNDAY SCHOOL
SUPPLIES IS FREE

The House of Real Service

American Baptist Publication Society

W. J. SMITH, Manager

1107 McGee St.

Kansas City, Mo.

Page 158

- Feb. 8 Culver-Stockton also shows a preference for 31 points, Big Red Team 28.
Feb. 12 Wesleyan defeated, 30 to 16.
Feb. 13 The Scribblers meet Mrs. Godfriaux.
Feb. 14 Summer school plans progress.
Feb. 15 Doctors Karr and Ripley entertain chapel fans.
Feb. 16 Junior wins again. Score, 31 to 25.
Feb. 19. Campus Opinion No. 25367A concerning Leap Year is published in the Student.
Feb. 22. Miss Jessie Burrall presents solution for the exam. problem.
Feb. 23. Senior girls give tea.
Feb. 25. Missouri Valley trounced 42--24.
Feb. 26. Phi Gamma Delta Wins the Inter-Fraternity basket ball conference.
Feb. 27. Debate teams split with Junior College. Prof. Feezor tells the W. J. C. A. of the womanliness of Jesus.
Feb. 28. Affirmative team proves no match for the lawyer line. Kansas City Law school thus wins the debate.
Feb. 29. Freshman win debate from the Missouri University freshmen.

MARCH

- March. 4. Glee Club practice. And that isn't all.
March. 5. Enfer. (Examination.)
March. 6. Plus d' enfer,
March. 7. Le plus d' enfer.
March. 8. Sighs of sorrow, relief, joy, bitterness and sadness.
March. 11. All professors attend classes.
March. 12. Prof. Harvey, Howard, Ewing, and Bush attend meeting of the Missouri Intercollegiate Association.
March. 13. Prof. Smith announces that he will post Psychology grades in time for matriculation in the fall.
March. 14. Reconsiders and posts grades. Many disappointments.
March. 17. Varsity debate squad announced.
March. 18. First section of Tatler goes to press. Faculty members presented with Pi Kappa Delta keys.
March. 20. "Scrawl" Club meets with Miss Walker. Ralph Davis entertains Y. M. C. A. with a musical selection from his Swiss music box.
March. 21. Glee Club renders program at Calvary Baptist church.
March. 22. Summer School for Jewell formally announced in Bulletin.
March. 24. Glee Club invades Kansas City High Schools.
March. 25. Student body decides to give a dollar of caution fee to support baseball team. Seniors vote enmass.
March. 26. Mass meeting of male students decide that faculty is getting unruly. Dr Fleet is called out of bed and meeting decides that they were wrong. "The rising sun clears away the mist—" etc.
March. 27. Remarkable lack of preparation on the part of students. Dr. Fleet is at last heard in chapel.
March. 28. The day as planned: Balmy spring weather. Work, 4 hours, holiday 6 hours. The day as it materialized: Rain, Work 1 hour eat 1 hour, fight 2 hours, first aid and bath, 6 hours.

APRIL

- April. 1. College burns down, President murdered, faculty comes to classes drunk, all students have their lessons prepared, and the Yellow Student comes out.

Page 159

W. F. NORON, Pres. E. S. HUNT, Vice-Pres. JOHN M. NEWLEE, Vice-Pres.
E. H. NORTON, Cashier W. C. CRAWFORD, Assistant Cashier

The Citizen's Bank

OF LIBERTY, MO.

"The Bank That Service Built"

Capital Stock, \$75,000.00 Surplus and Undivided Profits, \$25,000.00

R. W. PACK & CO.

"Everything for the Home"

Corner Excelsior and Main Streets

Excelsior Springs, Mo.

ELSTON GENTRY

DRUGGIST

'Phone 71

Liberty, Mo.

"The Best Town in the World"

J. J. Stogdale Clothing Company

MEN'S OUTFITTERS

Hart Shaffner & Marx Clothes

Stetson Hats

Bostonian Shoes

Congratulations

TO JEWELL

L. T. DORSETT'S

Quality Groceries

Northwest Corner Square Liberty, Mo.

J. H. BARNES

Rexall Drug Store

Full line of Liggett Chocolates, Conklin Pens, Kodaks, and Stationery