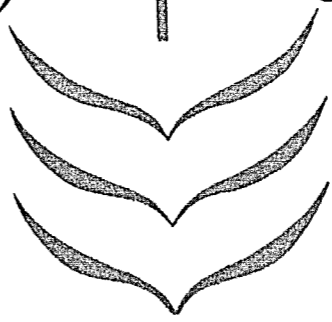


19 T 35



*The*

# TATTLER



11.11

# The TATTLER

There is something peculiar about a college annual, something not met with in quite the same form anywhere else in the world. College annuals are a product of youth, and youth is age before the mortar of care and experience has set. Perhaps in youth we feel more keenly than at any other time the endless flux of life, and the absence of black and white. Nothing is definite; all is merging, running, flowing into something else. During this period of the realization of indefiniteness, youth often leaves some landmark. Thus does the Junior Class of '36 present this book.

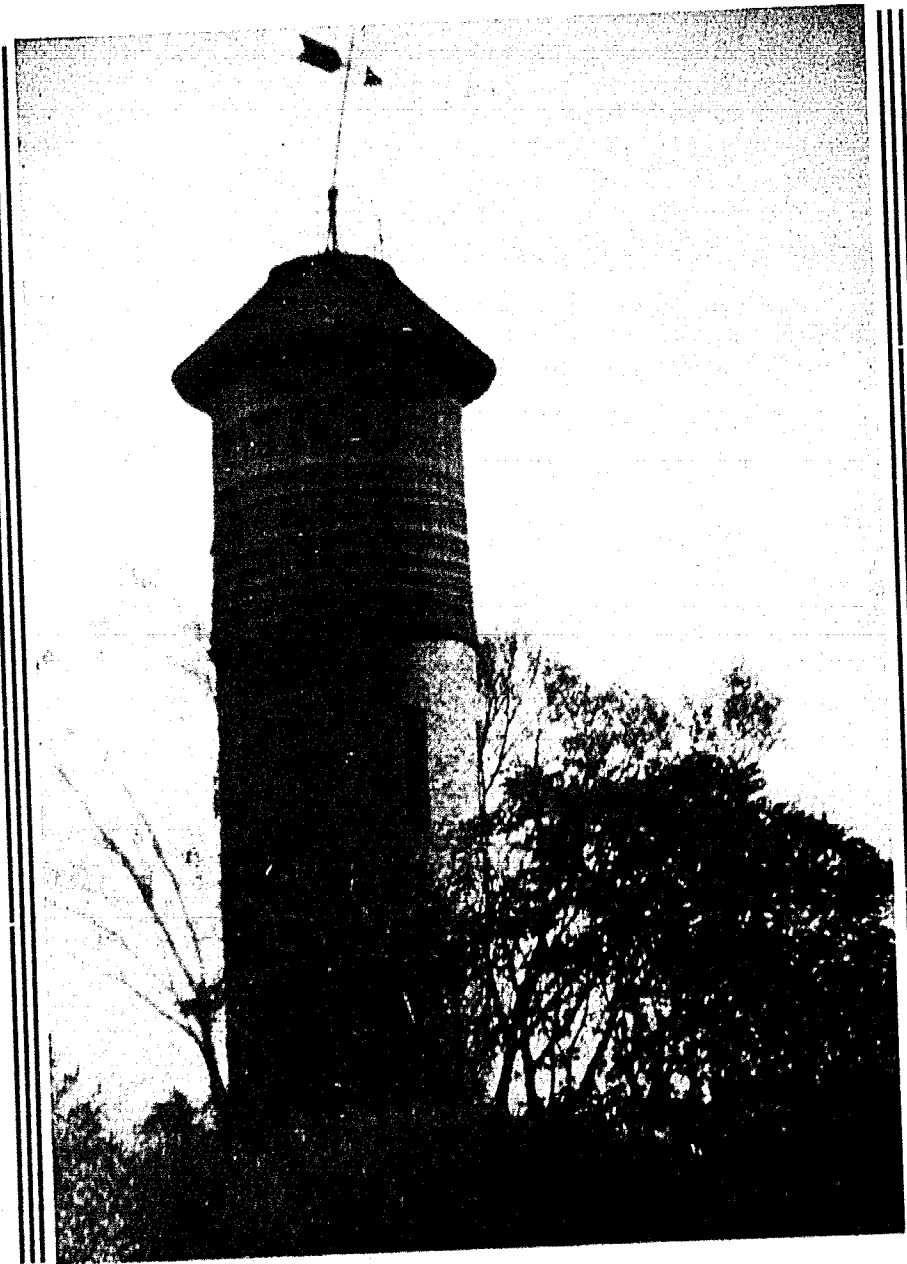


As you idly turn through the pages of this thirty-first edition of Jewell's yearly landmark, your feelings about this book, whatever they are, must inevitably be your feelings about your Alma Mater. The *Tattler* has become the official publication of the Alma Mater in service rendered as well as in name. The fundamental reason for its publication is that it preserves the spirit and friendships known during the academic year. To this, then, is this book dedicated.

Nineteen-Hundred Thirty-Five

42343

5-23-35

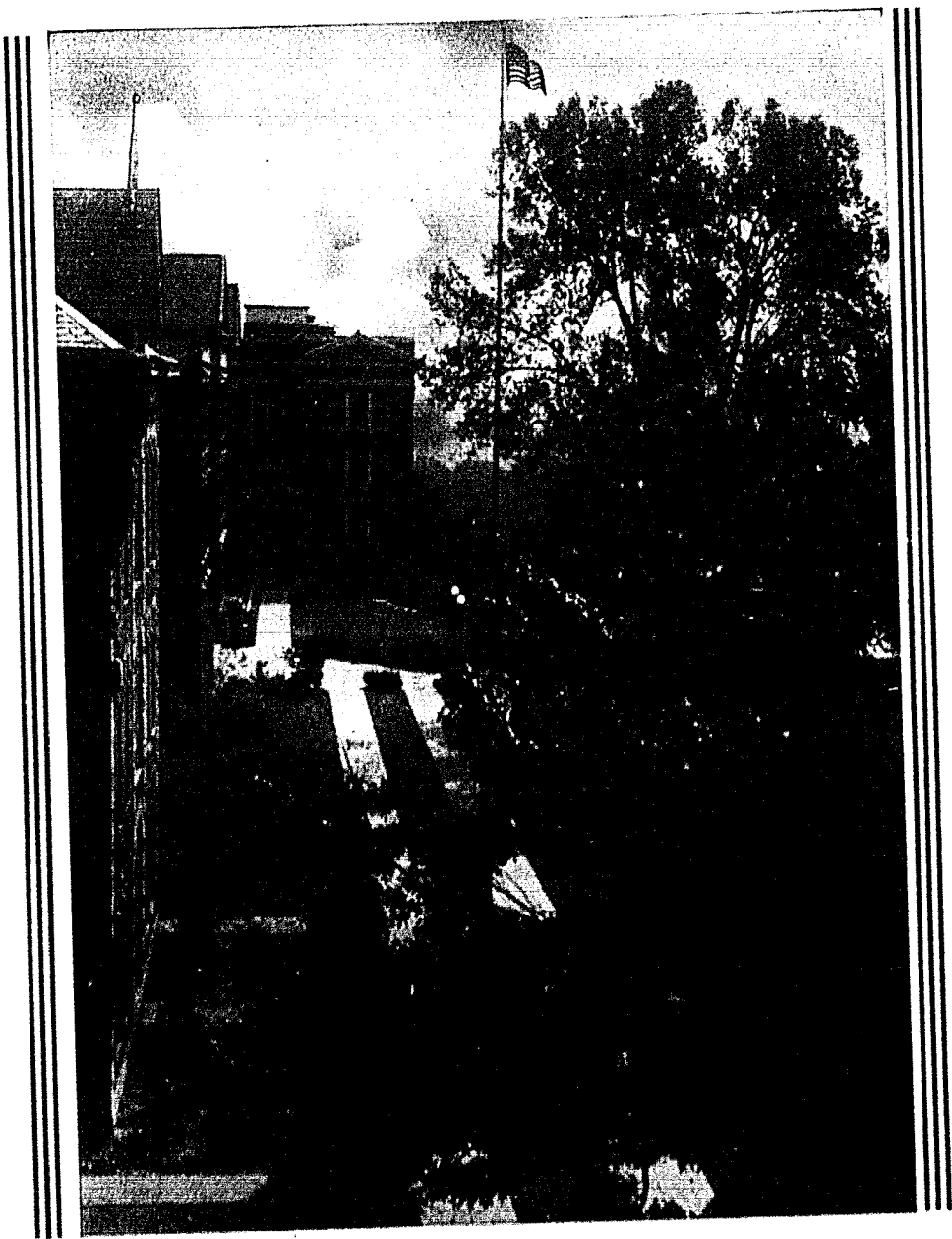


*Rustic Vigil*

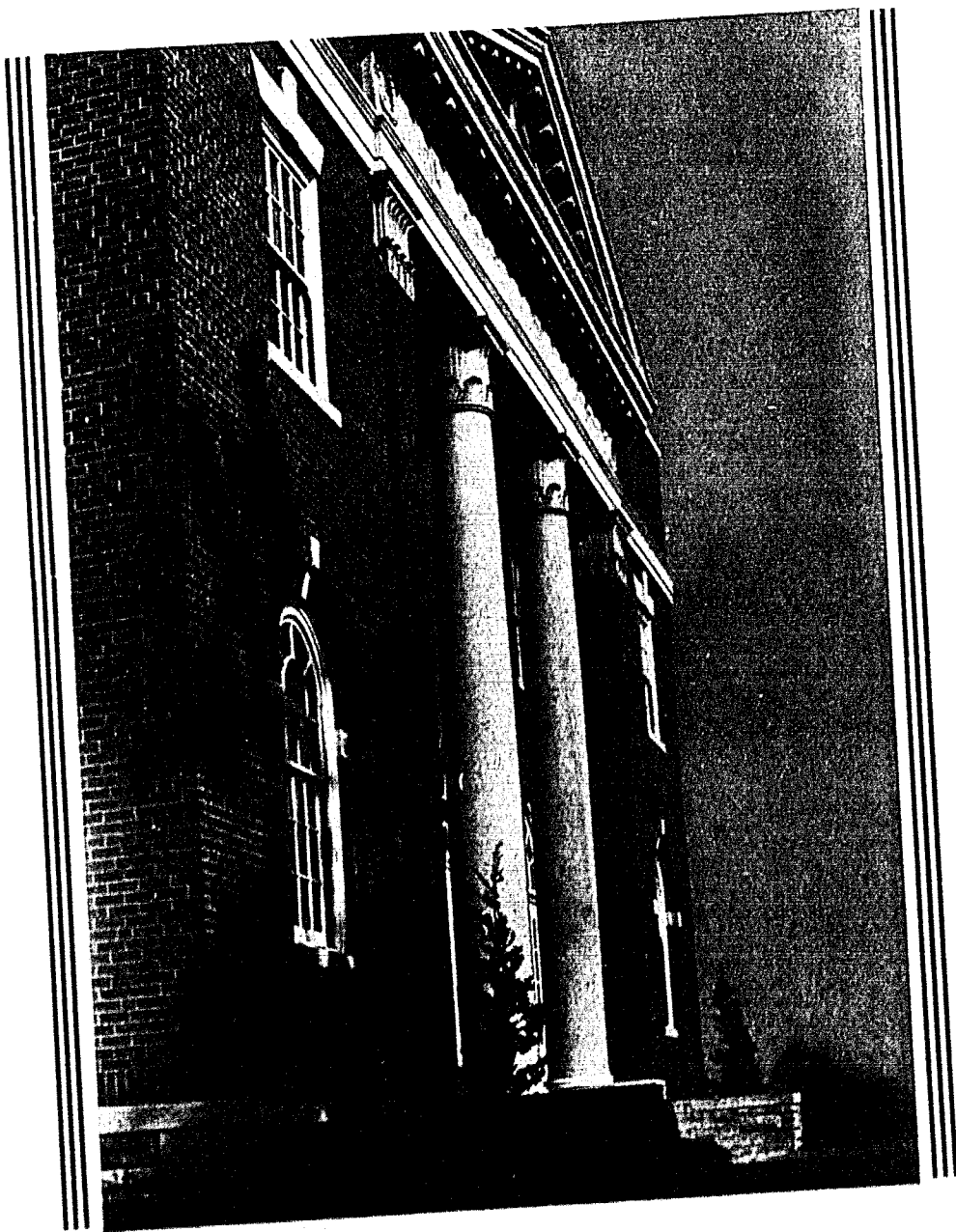


## *Foreword*

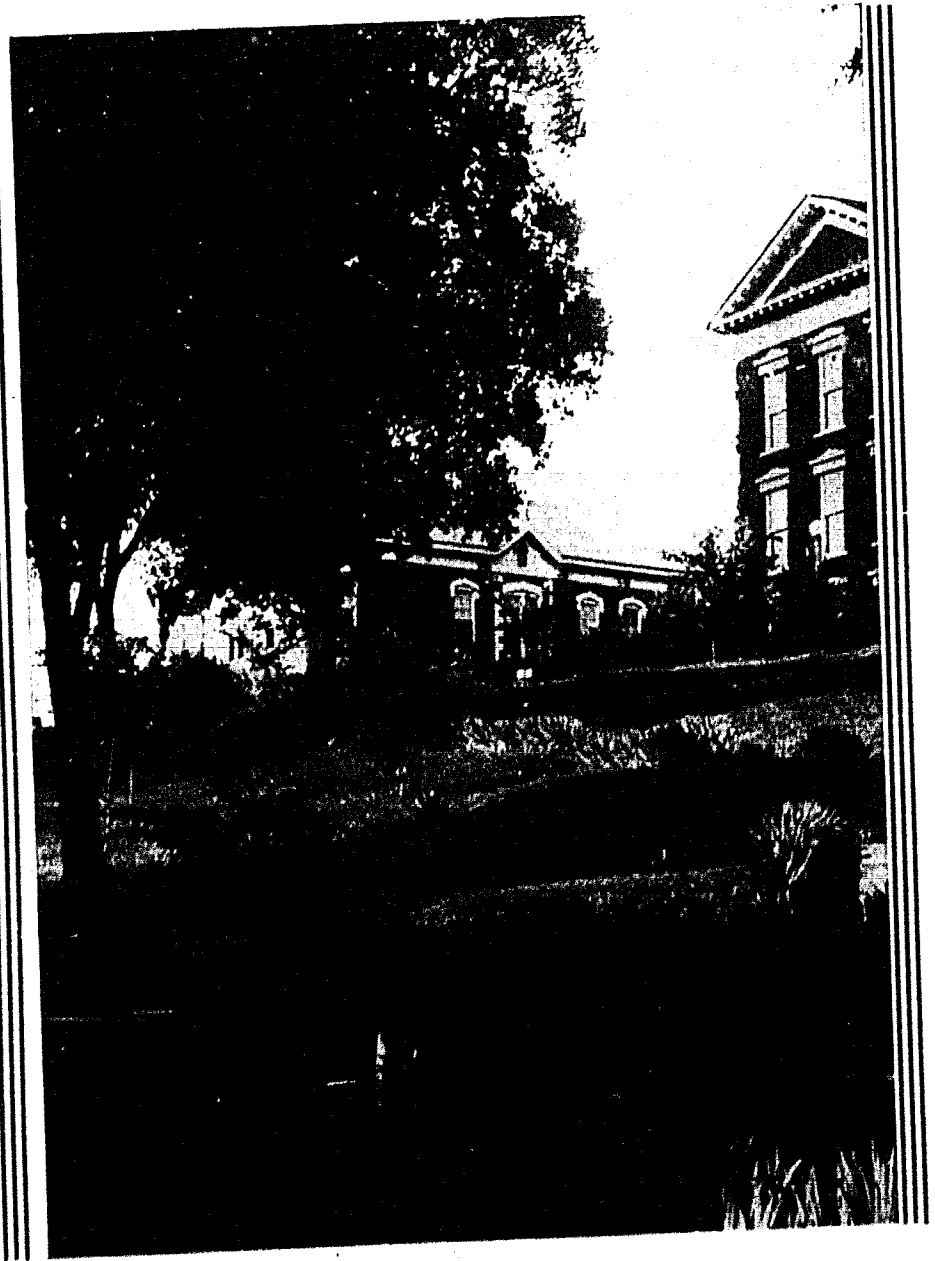
This is the biography of a pause. The year is 1935. We hope in the following pages to present a cross section of our student life, a record of the days that shall become our happiest memories, so that when these days have become memories and World and Time have swallowed the makers of this book and those depicted herein, the book itself shall remain a symbol to our generation of Jewell men and women of this happy, scholastic pause in our lives, and, for those to come, a sign that here and in this manner we lived and breathed and had our being.



*Etched in Nature.*



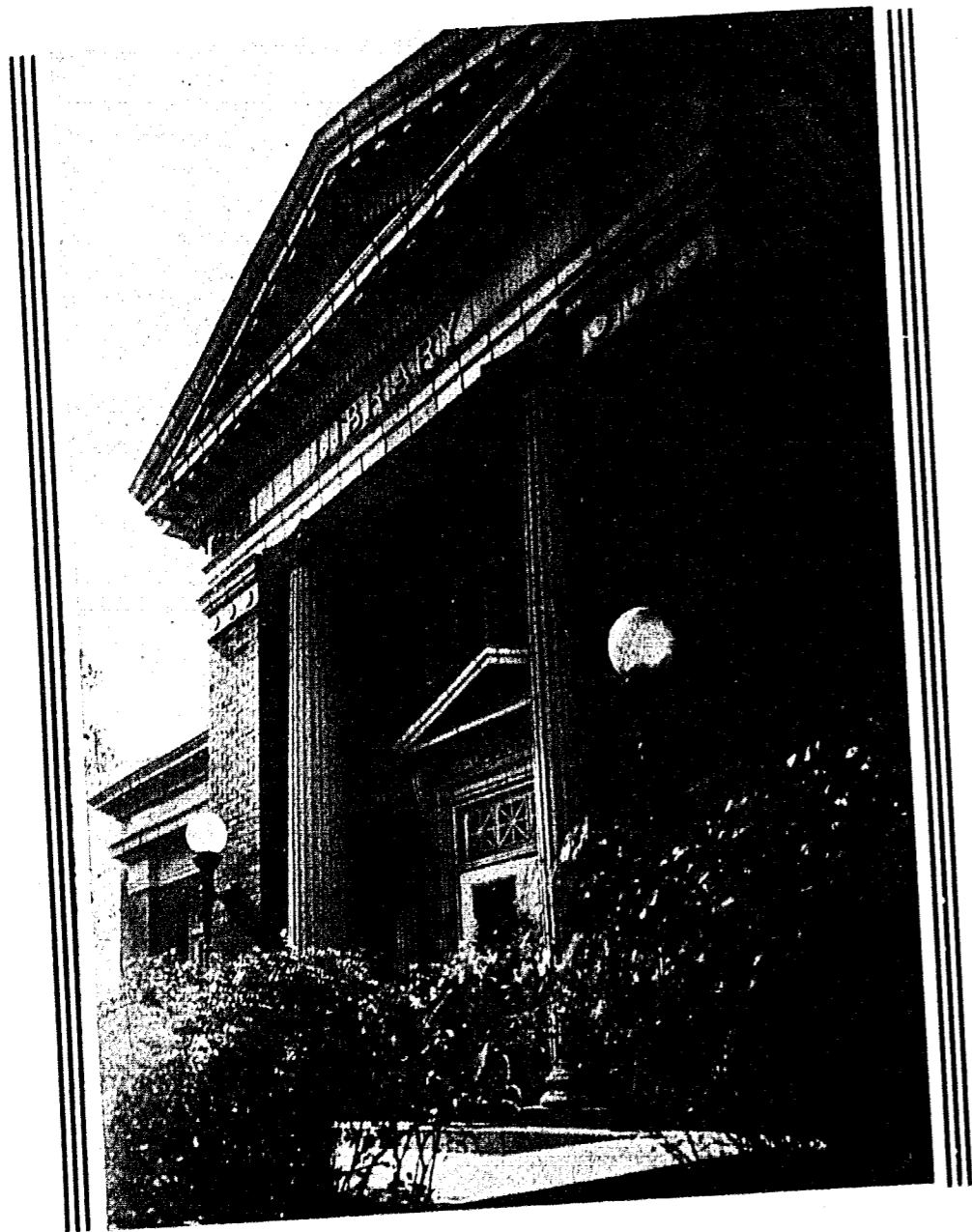
*Corinthian Columns*



*Incentive*



*Reverie*



*Columns of Carnegie*

## CONTENTS

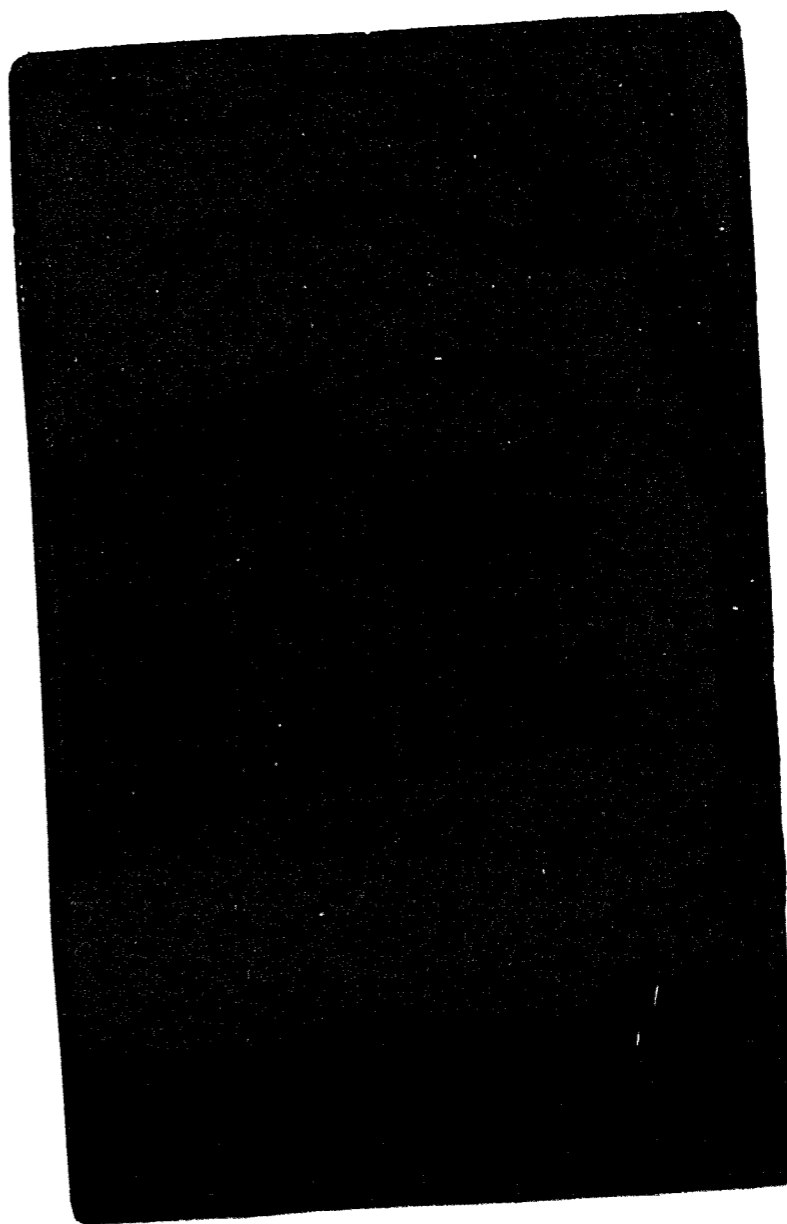
BOOK ONE  
The College

BOOK TWO  
Activities

BOOK THREE  
Features

BOOK FOUR  
Athletics

BOOK  
ONE



*The College*



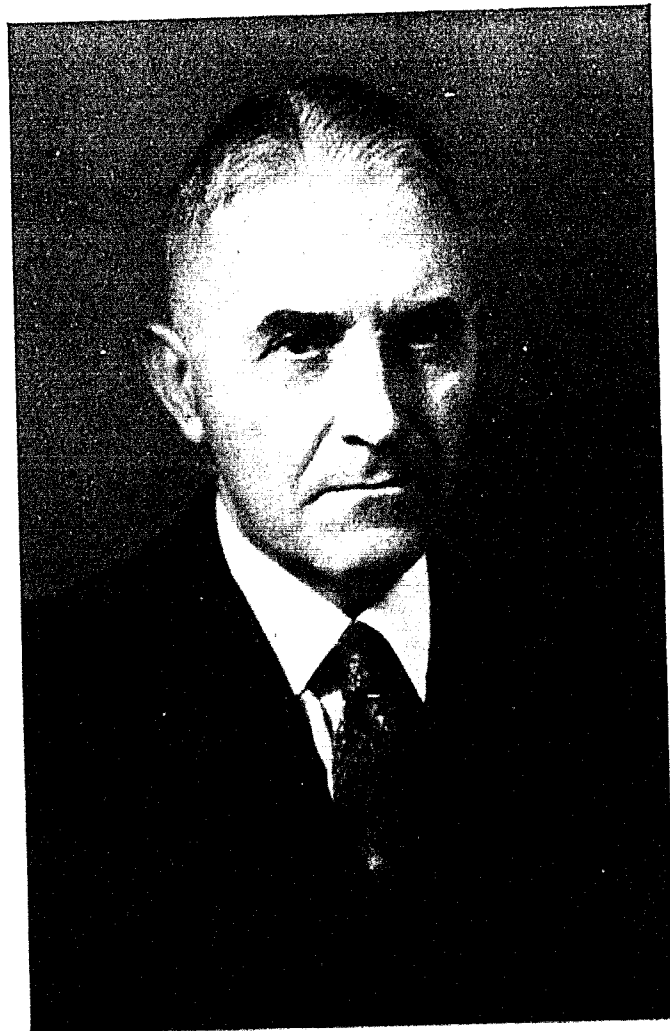
JOHN F. HERGET  
A. M., LL. D.  
President of the College

*My chief feeling* with reference to the members of the Student Body is one of sincere appreciation for the fine spirit which has prevailed among you throughout the year.

*My hope* is that all of you who do not graduate this May will be able to return in the fall and bring new students with you to share with us the choice fellowship of the "Old Hill".

*My wish* for those of you who are graduating is that, in addition to the factual knowledge and the ability to think and reason which you have acquired, you may carry with you happy memories of college days, a deep love for our Alma Mater and such a Christian philosophy of life as will enable you to meet courageously and successfully all the issues of life.

*John F. Herget.*



ALLEN J. MOON,  
A. M., LL. D.

*Dean, Head of the  
Department of An-  
cient Languages  
and Professor of  
Latin*



H. B. EARLY  
*Treasurer*

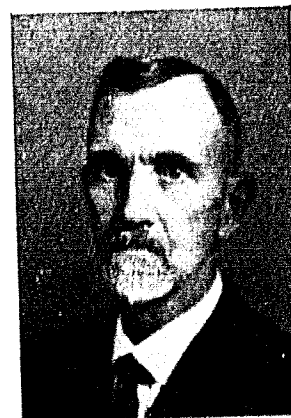
J. E. DAVIS, A. B.  
*Business Administrator the  
College  
Head of Dept. of Physics*



F. M. DERWACTER, Ph.D.  
*Professor of Greek*



H. I. HESTER, Th.D.  
*Head of the Department  
of Bible*



C. J. ELMORE, Ph.D.  
*Head of the Department  
of Biology*

## THE FACULTY

Dr. Derwacter is scholastically brilliant and is paternally interested in the welfare of those majoring under him.

Jewell's feminine Phi Beta Kappa is Helen Churchill. Her enthusiasm for her subject wins the admiration of freshman girl biologists.

Dr. Hester's ability as a lecturer clarifies the intricate genealogies of the Old Testament and makes interesting the background and substance of the New.

Dr. Weida is the softspoken and humorous instructor in the mysteries of modern chemistry. His versatility is demonstrated by his able tutelage of first year German students.

The sparkling wit and dry humor of Dr. Elmore have enlivened many a tedious lecture for adolescent freshmen who are being enlightened upon the mysteries of life and metabolism.

Dr. Edson is a capable lecturer on advanced chemistry. He is possessed of a brilliant scientific mind and an abundant store of good nature and human understanding. Such a word as tetramethyldiaminobenzophenone holds no mystery for him.



HELEN CHURCHILL, A. B.  
*Instructor in Biology*



GEORGE F. WEIDA, Ph.D.  
*Head of Department  
of Chemistry*



FRANK G. EDSON, Ph.D.  
*Professor of Chemistry*



J. B. SULLIVAN, Ph.D.  
Head of the Department  
of Education

Dr. Sullivan's reknown as an educator is based on his thorough understanding of his subject. He presides skillfully as Dean of the Summer School session.

Prof. P. Caspar Harvey is an enigma to the freshmen. He is a philologist par excellent, and handles a difficult subject in a most admirable manner.



P. CASPAR HARVEY, A. M.  
Professor of English  
Composition

As supervisor of practice teaching he teaches the teachers to teach. His poise and bearing make Prof. Isley a striking classroom figure.



THURSTON ISLEY, M.Ed.  
Assoc. Professor of Education

Miss Virginia D. Rice: Under her direction dramatics students have produced Pollock's *The Fool*, the *House Beautiful*, and Ibsen's *Ghosts*. Her vocation is the interpretation of Shakespeare and of contemporary poetry.



VIRGINIA D. RICE, A. M.  
Director of Dramatics  
Instructor in English

Dr. Fruit is our grand old man; indefatigable crusader against the Hog-Trough; verbal chastisement enriched by gems such as "blooming idiot" and "yaller dog"; an institution in himself.



JOHN PHELPS FRUIT, Ph.D.  
Head of Department  
of English

Prof. Prewitt Ewing has conscientiousness supported by preeminent ability. He has made history as a debate coach in Jewell's forensic annals. Also he has achieved the distinction of being in "Who's Who of the Young Men of America."



W. PREWITT EWING, A. B.  
Coach of Debate  
Instructor in English



HOLT SMITH, Ph. D.  
Head of the Department of  
History and Political Science

Dr. Holt Smith's method of "contract" is not bridge but history; an historian and progressive educator; known for his peculiar classroom jokes and keen sense of humor.

Prof. Denton expounds on elliptical and hyperbolic paraboloids, polar coordinates, maxima and minima and their applications, moment of inertia, etc. He is also known on the air lanes through W9RDJ.



B. EDWARD DENTON, A. M.  
Head of Department  
of Mathematics

Prof. Pugh is a genial gentleman from the South. He guides the freshmen through the maze of Modern European history and introduces ambitious upperclassmen to the intricacies of modern finance.



ULMA R. PUGH, A. M.  
Associate Professor  
of History

A prominent figure in Marston Hall is Prof. Van Trump. He initiates freshman physicists into the world of ohms, ergs, and coulombs.



JOSEPH VAN TRUMP, A. B.  
Instructor in Physics  
and Mathematics

Dr. Armstrong is the guardian of the archives of knowledge; a scholarly gentleman well versed in the content of his charge.



J. C. ARMSTRONG, A. M.  
Librarian of College

Prof. Byrns is an artist with his charcoal and his wit. His students of German, Spanish and French profit by his broadened view, a result of foreign travel and study.



ARTHUR GROVER BYRNS, A. M.  
Acting Head of Department  
of Modern Languages and  
Professor of Spanish  
Page Seventeen



FRANK DAVIS, A. M.  
Acting Assistant Professor  
of Spanish and French

Prof. J. Frank Davis is outstanding as a linguist and scholar. His appreciation of student problems and understanding have won the students' respect.

Our contact man is Seaford Bill Eubanks. He carries the name of Jewell to the secondary schools throughout the state.



SEAFORD BILL EUBANKS, A. B.  
Personnel Director

Socially popular and scholastically capable is Prof. Chrisman. His fluency of speech makes easy the assimilation of Spanish and French grammar. This year he took leave of absence to study at the University of Kansas.



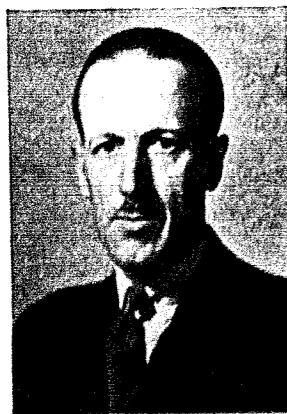
CLARENCE G. CHRISMAN, A. M.  
Assistant Professor of  
Spanish and French  
(Leave of Absence  
University of Kansas)

R. E. Bowles, affectionately known as "Dad", is known to hundreds of Jewell's students and athletes. He is a developer of men.



ROBERT EARL BOWLES, A. B.  
Director of Physical Education

Dr. W. C. Smith is a powerful figure in a growing department. He is sponsor of numerous extra-curricular activities and is interested in student problems.



MAJOR DOUGLAS BOOTH  
Visiting Carnegie Lecturer

Major Douglas Booth, visiting Carnegie lecturer on international affairs, not only analyzed world political and economic problems but also demonstrated that the English have an excellent sense of humor.

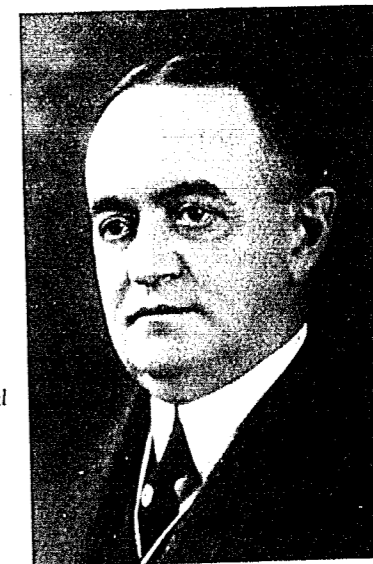


W. C. SMITH, Ph.D.  
Head of Department and  
Professor of Sociology  
and Economics

## THE TRUSTEES



W. D. JOHNSON  
President of Board



J. B. REYNOLDS  
Vice President of Board

- Amick, E. F. .... Fairfax Bldg., 101 W. 11th Street, Kansas City, Mo.
- Atwood, Judge Frank E. .... President Missouri Bar Association, Jefferson City, Mo.
- Brown, S. J. .... 548 Dwight Building, Kansas City, Mo.
- Browning, W. P., jr. .... Olathe, Kans.
- Fitch, W. M. .... 1237 Boatmen's Bank Building, St. Louis, Mo.
- Graham, J. P. .... Graham Lumber Company, St. Louis, Mo.
- Griffith, W. H. .... Griffith Shoe Company, St. Joseph, Mo.
- Johnson, W. D., *President* .... 2512 Fidelity National Bank Bldg., Kansas City, Mo.
- Jones, Minetry, jr. .... Jones Hat Company, St. Joseph, Mo.
- Mackey, J. C. .... Clarksville, Mo.
- Martin, T. D. .... Martin Motor Company, Springfield, Mo.
- Martin, W. W. .... Masonic Orphans' Home, St. Louis, Mo.
- Pillsbury, E. S. .... 1827 Pine Street, St. Louis, Mo.
- Prince, Chester J. .... 7019 Dale Ave., St. Louis, Mo.
- Proctor, Rev. L. M. .... Independence, Mo.
- Ray, A. T. .... Gallatin, Mo.
- Reynolds, J. B., *Vice-President* .... Kansas City Life Insurance Bldg., Kansas City, Mo.
- Storts, Com P. .... Slater, Mo.
- Trimble, E. G. .... Insurance Building, Kansas City, Mo.
- Trimble, Judge Francis H. .... Liberty, Mo.
- Tutt, Dr. A. M. .... Liberty, Mo.
- Weber, Rev. Paul .... Jefferson City, Mo.
- Westbrook, W. M. .... Marshall, Mo.
- Wilhite, Hugh .... Excelsior Springs, Mo.
- Winger, Maurice .... Waltower Bldg., Kansas City, Mo.

# STUDENT GOVERNMENT



CARPENTER

DAVIDSON

HUZAR

MAGRUDER

## The Student Senate

The duties of the Student Senate are quoted from the Constitution of the Student Association of the college:

### ART. III. THE STUDENT SENATE.

A. The Student Senate shall consist of seven members: the presidents of the Senior, Junior, Sophomore, and Freshman classes respectively, and the vice-presidents of the Senior and Junior classes. The president of the student body shall be an ex officio member and chairman of the senate.

B. The Student Senate shall be the official representative of the student body in all matters that pertain to the student body as a whole.

C. From its own members the Senate shall elect its secretary who shall maintain a permanent record of all its activities.

### ART. IV. THE BOARD OF CONTROL OF STUDENT PUBLICATIONS.

A. The Board of Control of Student Publications shall consist of the members of the Student Senate and three faculty members.

B. The board shall have direction and control of both the editorial and business management of all student publications, including the *Student* and the *Tattler*.



MELVIN THOMPSON  
Student Body Pres.



Seniors

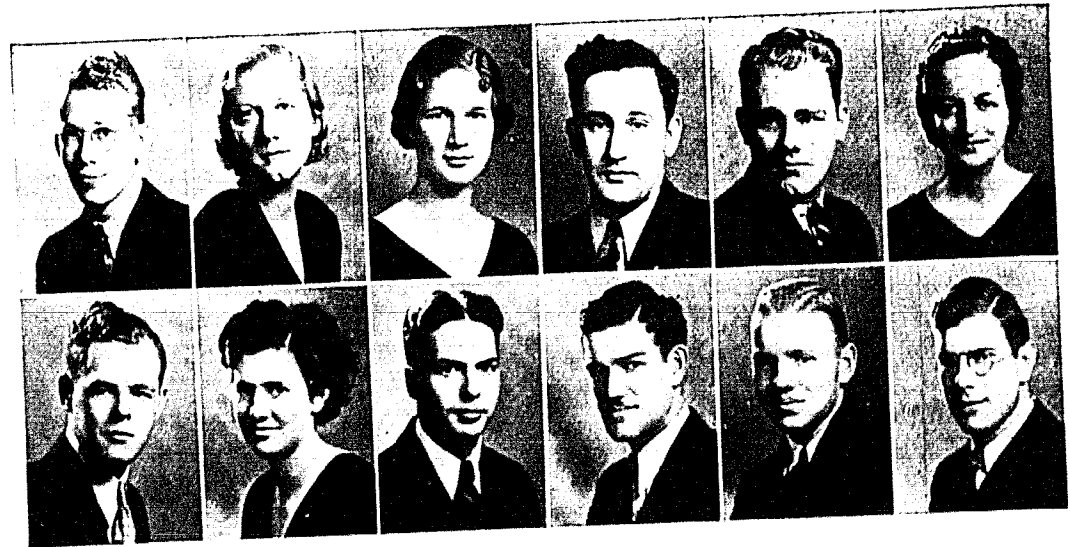


# IN MEMORIAM



HERMAN "POLLY" GRANT  
Class Of '35  
Died Sept. 30, 1935

"Greater Love Hath No Man  
Than To Lay Down His Life  
For His Friends".



ALLEN	BAILEY	BELLES	BROCK	BROWN	CARLIN
COEN	COX	CRUTCHFIELD	CUMPTON	DAVIDSON	DUNCAN

ALLEN, CYRUS K. Math. Physics Zeta Chi, Sigma Pi Sigma, Acons, Student staff '35, Tatler staff '33, Track, '31.	Rothville	BAILEY, MARGARET English Latin Sigma Rho, Panaegis, Y. W. A., Y. W. C. A.	Sheridan, Wyo.
BELLES, MARY History Economics International Relations Club, Y. W. A., Women's Glee Club, Spanish Assistant.	Liberty	BROCK, EDGAR History Sociology Ministerial Group, Student Volunteers	Brighton
BROWN, WILSON G. Chem. Biol. Phi Gamma Delta Pres., Acons, Theta Chi Delta, Beta Beta Beta, Gamma Pi Epsilon, Y. M. C. A., Student Editor '35, Tatler staff '35, Glee Club '32, Senior class Treas., William Jewell Players, Football '31.	Bosworth	CARLIN, MAUDE MARY Spanish French Glee Club	Monett
COEN, O. CHESTER Physics Math. Zeta Chi, Sigma Pi Sigma, Band, InterFraternity council.	Jamesport	COX, RUTH History Pol. Sc., Soc. T. N. T., Panaegis, International Relations Club, Girl's Physical Ed. Director.	Excelsior Springs
CRUTCHFIELD, JOHN Ministerial Group, Student Volunteers, Alpha Phi Omega, Alpha Zeta Pi Pres. '35, Dramatics.	Clifton Hill	CUMPTON, RALPH History Education Zeta Chi, Football '32, '33, '34, '35, Basketball '32, '33, '34, '35.	Liberty
DAVIDSON, JAMES C. Sociology Eco. and Pol. Sc. Kappa Alpha, Acons, Pi Gamma Mu, Alpha Phi Omega, Band '33, '34, '35, Board of Control, '35, Senior Pres. '35, International Relations Club, Pi Kappa Delta, Student staff, '35, Y. M. C. A., Forensics, Oratory, '34.	North K. C.	DUNCAN, DONALD N. English Latin Phi Gamma Delta, Alpha Psi Omega Pres., '35, William Jewell Players, Managing Editor Tatler '34	Boone, Iowa

FORDHAM, BUFORD B. *Carrollton*  
Sociology Pol. Sc.  
Ministerial Group, Alpha Phi Omega, Alpha Zeta Pi.

HALEY, NADINE *Boonville*  
Spanish French  
Glee Club '34, '35, College Quarter, '33, '34, Student Volunteers, Y. W. A., Y. W. C. A., Sigma Rho

HAMMOND, ARDATH E. *Harris*  
History Education  
Alpha Zeta Pi, Alpha Phi Omega, Football, '33, '34.

HENSLEY, J. CLARK *Liberty*  
Bible Soc., Greek  
Pres. Ministerial Group, Pi Kappa Delta, Student Volunteers, Alpha Zeta Pi, Pi Gamma Mu.

HUNT, CHARLES *Mt. Vernon*  
Greek Bible  
Ministerial Group, Glee Club.

JARVIS, LESLIE G. *St. Louis*  
History Pol. Sc.  
Zeta Chi, International Relations Club, Dramatics, Band '32, '33.

GAINES, J. CARL *Richmond*  
Zeta Chi, Theta Chi Delta, Pres. Beta Beta Beta, Glee Club, '33, '34, Assistant Biology, '35, Interfraternity Council '34, Band, '31, '32, '33, '34.

HALL, LUCILLE *Liberty*  
History English  
T. N. T. Pres., Panaegis, Y. W. C. A., Editor '34 Tatler, Tatler staff '33-'35, Student staff, '34, '35, Alpha Psi Omega, Dramatics, Symbols '33, Pan-Hellenic Pres., Gamma Pi Epsilon.

HEINLEIN, FRANCES *Butler*  
T. N. T., Pan-Hellenic Council, Y. W. C. A., International Relations Club, Dramatics.

HUFFT, COLLINS *Liberty*  
Chemistry Biol., Physics  
Kappa Alpha Pres., Theta Chi Delta, Acons, "J" Club Pres., Interfraternity Council Pres., Football, '33, '34, Cap't, '35, Track '33, '34, Cap't, '35.

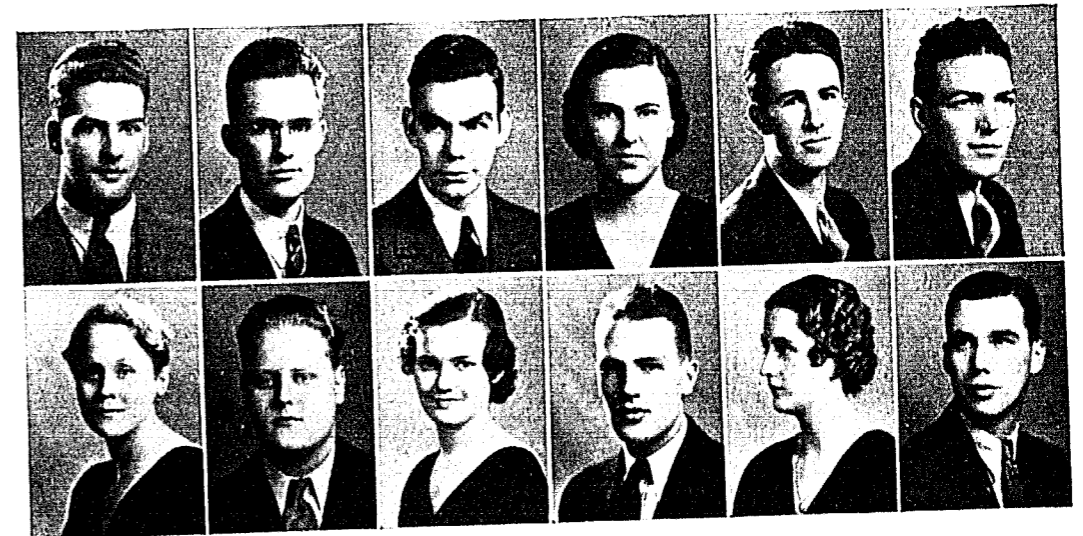
HUZAR, ELIAS *Liberty*  
History Econ., Pol. Sc.  
Senior Vice Pres., Student Senate, Board of Control, Pi Gamma Mu Pres., International Relations Club, Y. M. C. A., Student staff, '32, '33, '34, '35, Tatler staff, '35, Competitive Scholarship '32, '33, '34, Fitch Prize, '34.

JENNINGS, CYRENA *St. Joseph*

FORDHAM	GAINES	HALEY	HALL	HAMMOND	HEINLEIN
HENSLEY	HUFFT	HUNT	HUZAR	JARVIS	JENNINGS



Page Twenty-Four



JETER	KIRCHNER	LYON	MANN	McELWAIN	MILAM
MORGAN	MUCHMORE	OFFUTT	PAGE	PARKER	PARKER

JETER, KENNETH *Slater*  
Education History  
Sigma Nu, Student Chapel Committee, Football, '32, '33, '34, '35, "J" Club

LYON, ROBERT QUINTON *Richmond*  
History Spanish  
Sigma Nu Pres. '33-'34, Interfraternity Council '34, Sons of Rest, Sigma Tau Delta, Editor Student, '34, Student Staff, '32, '33, '35, Tatler Staff, '33, '34, '35, Sec. Y.M.C.A., Sec. Gamma Pi Epsilon

McELWAIN, RALPH KENNETH *Cameron*  
Sociology History  
Alpha Phi Omega, Y.M.C.A., Alpha Zeta Pi, Track, '34, '35, Glee Club, Band

MORGAN, ARLENE *Kansas City*  
Sociology Education  
Pi Gamma Mu

OFFUTT, THELMA LOU *Independence*  
Sociology Econ., Pol. Sc.  
Beta Sigma Omicron, Pi Gamma Mu, International Relations Club, Dramatics, Y.W.C.A.

PARKER, BETTY *Shenandoah, Iowa*  
Spanish, French History  
Beta Sigma Omicron, International Relations Club, Dramatics, Y.W.C.A.

KIRCHNER, EUGENE NICHOLAS *Liberty*  
Mathematics Physics  
Alpha Zeta Pi, Ministerial Group, Student Volunteers

MANN, RUTH ELLEN *Independence*  
Spanish French  
Dramatics, Glee Club, Y.W.C.A.

MILAM, MARCUS *Tulsa, Okla.*  
English, Latin French, Spanish  
Kappa Alpha, Sigma Tau Delta, Glee Club, Tatler staff, '32, '33, '34, Student staff, '33, '34, Sons of Rest

MUCHMORE, CLOYD *Appleton City*  
Biology Math., Chem.  
Pi Gamma Mu, Beta Beta Beta, Sons of Rest, International Relations Club

PAGE, C. W. *Excelsior Springs*  
History Pol. Sc., Soc.  
International Relations Club, Pi Gamma Mu, Alpha Phi Omega, Pres., "J" Club, History Assistant '33, Track, '32, '33, Cap't '34, '35

PARKER, TALTON *Shenandoah, Iowa*  
History Pol. Sc.  
Kappa Sigma, Alpha Psi Omega, Pi Gamma Mu, International Relations Club, Dramatics, Oratory, '34, '35, Student staff, '35

Page Twenty-Five

PITNEY, MARVIN *Higbee*  
 English Greek  
 Student Volunteer Band, Ministerial Group,  
 Alpha Zeta Pi, Dramatics

RATHMANN, JULIUS *Liberty*  
 Sociology Econ., Pol. Sc.  
 Phi Gamma Delta, Dramatics, Pi Gamma Mu,  
 Pi Kappa Delta, Alpha Psi Omega, Pres. Inter-  
 national Relations Club.

REYNOLDS, GILBERT HEWITT *Maysville*  
 Hist., Education Pol. Sc.  
 Kappa Sigma, Aeons, Y.M.C.A., Pres., Student  
 staff, '34, Student Editor, '34, International Rela-  
 tions Club, Pi Gamma Mu, History Assistant,  
 Gamma Pi Epsilon

SHEETZ, LOIS JEAN *Trenton*  
 Special Student  
 T.N.T., Pi Gamma Mu

STONE, MARY *Kansas City*

THOMPSON, MELVIN *Liberty*  
 History Math.  
 Kappa Sigma, Pres., Freshmen Treas., Sophomore  
 Vice Pres., Junior Sec., Student Body Pres., '35, In-  
 ternational Relations Club, Board of Control, '31,  
 '35, Student staff, '34, Interfraternity Council, Sec.,  
 Football, '31, '32, '33, '34, Basketball, '32, '33,  
 Capt. '34, and '35, Track, '32, '33, Tennis '35, 'J'  
 Club, All-Conference End Football, '34

RAND, MAGARETTE *Liberty*  
 French Spanish  
 T.N.T., Dramatics, Y.W.C.A., Art Editor Tatler,  
 '31, '32, '33, '34, '35

REPPENHAGEN, WALTER L. *Salisbury*  
 History, Pol. Sc. Sociology  
 Phi Gamma Delta, Aeons, Ministerial Group,  
 Student Volunteer Band, International Relations  
 Club, Forensics, Pol. Sc. Assistant

ROBERTSON, ARTHUR M. *Odessa*  
 History Economics  
 Kappa Sigma, International Relations Club, "J"  
 Club Vice Pres., Football, '31, '32, '33, Capt. '34

SMITH, CECIL *Fayetteville, Ark.*

SUTHERLAND, LON *Raytown*  
 History English  
 Kappa Sigma, Junior Class Pres., Basketball, '34,  
 '35, "J" Club, Board of Control, '34, Student  
 Senate '34, Interfraternity Council, '33, '34, Vice  
 Pres. '35, International Relations Club, Sons of  
 Rest, Band

TRABUE, JAMES *Pleasant Hill*  
 Chemistry Physics, Math.  
 Phi Gamma Delta, Theta Chi Delta, Aeons, "J"  
 Club, Interfraternity Council, Football, '31, '32,  
 '33, Track, '32, '33, '34, '35

PITNEY	RAND	RATHMANN	REPPENHAGEN	REYNOLDS	ROBERTSON
SHEETZ	SMITH	STONE	SUTHERLAND	THOMPSON	TRABUE



Page Twenty-Six



TURNER VIKI WHITSITT WICKSTROM WILLIS YATES

TURNER, HERBERT M. *Springfield*  
 History Sociology  
 Dramatics, Glee Club

WHITSITT, EARL C. *Liberty*  
 Ministerial Group Pres. '32, Bus. Mgr. Student, '32,  
 International Relations Club, Y. M. C. A., Glee  
 Club, Director of Band '34.

WILLIS, FRANCEIL *Spickard*  
 English Latin  
 Panaegis, Sigma Tau Delta Pres., Student Staff,  
 '33.

VIKE, BERNADINE S. *Eagle Grove, Iowa*  
 History Education  
 Beta Sigma Omicron, Pi Gamma Mu, Pan-Hel-  
 lenic Council '35, International Relations Club,  
 Tatler Staff '34, Glee Club, Y. W. C. A., Y. W. A.

WICKSTROM, DOROTHY *Kansas City*  
 Education English  
 Beta Sigma Omicron, Panaegis, Y. W. C. A., Dra-  
 matics, International Relations Club, Student Staff,  
 '34, Glee Club, Pi Gamma Mu, Y. W. A.

YATES, INEZ *Liberty*  
 English Latin  
 T. N. T., Alpha Psi Omega, Dramatics, Y. W. C. A.,  
 Student Staff, '35, Tatler Staff, '34

Unphotographed:

FARRIS, FREDERIC HAL

Liberty

MCPHEE, PETER ROBERTSON, JR.

Salt Lake City,  
Utah

MARTIN, ALLEN

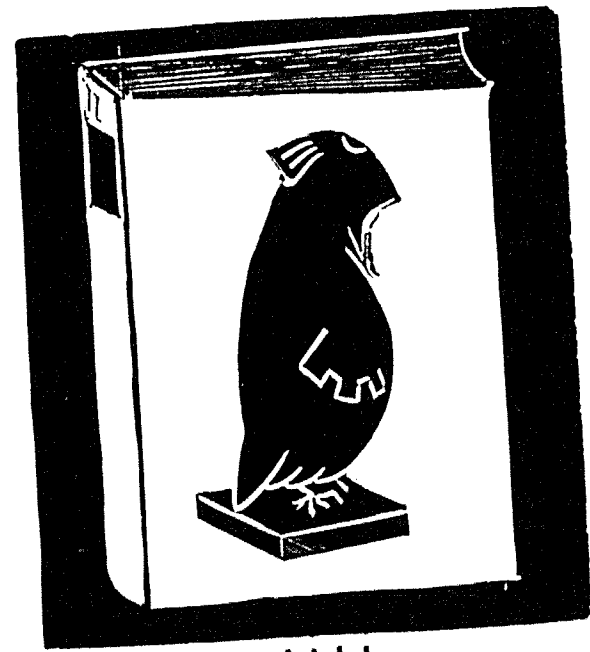
Forest City

MOORE, HOWARD

Doniphan

RICE, WILSON

Liberty



Juniors



AULL  
DAVIS

BENEDICT  
DONALDSON

BESSMER  
DUNCAN

BREWER  
FRETWELL

BURCH  
HALE

DAVIDSON  
HENNON

AULL, FORREST  
Chemistry Physics  
Theta Chi Delta, pres. Excelsior Springs

BESSMER, ROBERT M.  
History Pol. Sc.  
Zeta Chi, Tatler Bus. Mgr., '35, Debate '33 Independence

BURCH, MARY BELLE  
English Latin  
Beta Sigma Omicron, Pi Kappa Delta, Y. W. C. A., Debate '34, '35 Braddyville, Ia.

DAVIS, KIMZEY  
Phi Gamma Delta, Dramatics, "J" Club, Football, '32, '33, '34, International Relations Club, Student Staff. Liberty

DUNCAN, BERT LOGAN  
English Greek  
Ministerial Group, Band, Student Volunteers, Y. M. C. A. Corso

HALE, HAZEL MARIE  
History Sociology  
Y. W. A., Student Volunteer. Springfield

BENEDICT, ROBERT N.  
Greek Latin  
Ministerial Group Cedar Rapids, Iowa

BREWER, ALTEN CLAIR  
Phi Gamma Delta, Forensics, Track '35, Y. M. C. A. Webster City, Iowa

DAVIDSON, MARGARET  
English Greek  
Sigma Rho, Student Volunteers, Glee Club Y. W. A. California

DONALDSON, DOROTHY  
T. N. T., Pres. Y. W. C. A., Sigma Tau Delta, Dramatics, Beta Lambda, Student Staff, '33, '34, '35, English Assistant '33, '34, '35. Liberty

FRETWELL, HELEN  
Monticello

HENNON, R. MANSEL  
Soc. Bible  
Tatler staff, '35, Tennis, '34, '35; Ministerial Group St. Louis

HILTON, RICHARD  
Physics Math.  
Phi Gamma Delta, Sigma Pi Sigma, Alpha Phi Omega. Hardin

JONES, ALYCE M.  
Latin French  
Sigma Rho, Y. W. A. Kansas City

KOCH, GEORGE B.  
History Econ., Pol. Sc.  
Kappa Alpha, "J" Club, Track, '33, '34, Y. M. C. A., Sons of Rest. Liberty

MAGRUDER, N. BURNETT  
Greek Latin  
Ministerial Group, Pres. Student Volunteers '35, Pi Kappa Delta, Student Staff, '35, Tennis '33, Pres. Junior Class, Student Senate, '35, Board of Control, '35. Odessa

MIKHALCHUK, H. J.  
Kansas City, Kans.

MOOREHEAD, ANDREW  
Grand Junction, Colo.

HOCKETT, ALICE  
English Latin Math.,  
Dramatics, Debate, '34, Y. W. A., Glee Club, '33, '34, '35. Liberty

KOCH, MARY ANNA  
History Pol. Sc.  
T. N. T., Y. W. C. A. Liberty

MCGRAW, FRANCES  
English Latin  
Y. W. A., Student Volunteer, Glee Club. California

MINOR, IRENE  
Knox City

MURPHY, EMMETT  
Sigma Nu, Bus. Mgr. Student, '35, Pres. Sophomore Class, '33, Student Senate, Board of Control, Sons of Rest. Laredo



HILTON  
MAGRUDER

HOCKETT  
MCGRAW

JONES  
MIKHALCHUK

KINDRED  
MINOR

KOCH  
MOOREHEAD

KOCH  
MURPHY

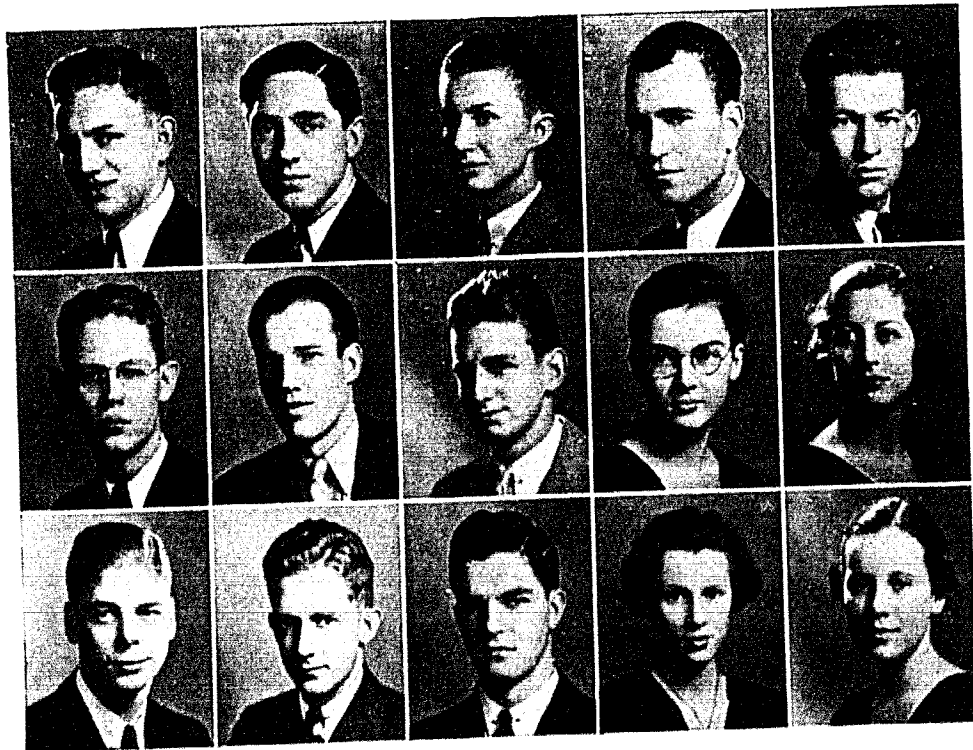


## Unphotographed

ALSPAUGH, GLEN	Liberty	McDOUGALL, MERILL P.	Liberty
BURNHANS, ROLLIN SCOFIELD	Bolivar	MULLINS, DOROTHY	Princeton
CHRISTIAN, HELEN A.	Darlington	MURREL, MILDRED	K. C., Kansas
COOPER, RALPH ALLEN	Liberty	PRATT, LEROY	Sedalia
DIXON, HALE A.	New Florence	SHANK, RALPH	Independence
EVANS, JOHN ORVILLE	Kansas City	THOMPSON, PAUL	Liberty
FENNER, FRANKLIN ARNOLD	Grand Junction, Colo.	VAUGHN, LOUISE	Blue Springs
GOYNE, IDA C.	Ashland, Pennsylvania	VINE, DONALD	Trinidad, Colo.
HAMMOND, ARDATH ELBA	Harris	WETZEL, NEVIN	Independence
HINTZ, AUGUST	La Monte	WHEAT, ZACK	Kansas City
HOOVER, MARTHA E.	Liberty	WILLIAMSON, RUTH ANN	St. Joseph



Sophomores



AMERY  
BOWERS  
CARPENTER

AULL  
BROWNING, R.  
COPE

BECK  
BROWNING, W.  
CHIRANE

BETTS  
BURKHARDT  
CRAWFORD

BOGARD  
BYRNS  
DAVIS

JOE AMERY  
GEORGE AULL  
LEON BECK  
CLARENCE BETTS  
DALE BOGARD  
JAMES BOWERS  
ROBERT BROWNING  
WILLIAM BROWNING

Liberty  
Liberty  
Norborne  
Kansas City  
Liberty  
Pueblo, Colo.  
Kansas City  
Olathe, Kans.

ANNAJANE BURKHARDT  
ELSE BYRNS  
WILLIAM CARPENTER  
JAMES COPE  
FRANK CHIRANE  
MEDORA CRAWFORD  
ELEANOR DAVIS

Liberty  
Liberty  
Rothville  
Lexington  
Liberty  
Liberty  
Liberty

FIELDS DUNCAN  
DUDLEY DURHAM  
FERN EUBANKS  
ROBERT JOHNSON  
HOWARD JONES  
HOWARD LEE  
W. R. MARQUETTE  
PAUL MANSFIELD

Liberty  
Liberty  
Monett  
Independence  
Marshall  
Detroit  
Harrisonville  
St. Joseph

EDWARD McDONALD  
BETTY MCGONIGLE  
MILDRED MILLION  
EDWIN MONROE  
CHARLES PAISLEY  
BEN PERRY  
L. M. PROCTOR  
OSWALD QUICK

Liberty  
Detroit  
Rock Port  
Harrisonville  
Farmington, Iowa  
McFall  
Independence  
Hardin

DUNCAN  
LEE  
MILLION

DURHAM  
MARQUETTE  
MONROE

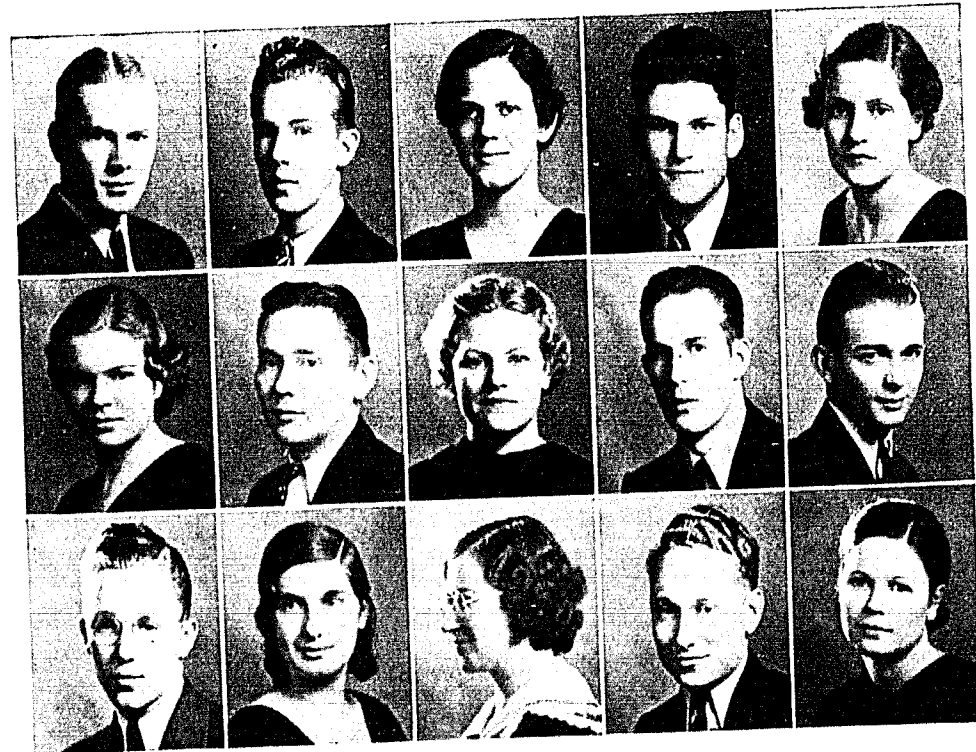
EUBANKS  
MANSFIELD  
PAISLEY

JOHNSON  
MCDONALD  
PROCTOR

JONES  
MCGONIGLE  
QUICK

PERRY





RENSHAW  
STURGES  
WATERS

RHODES  
SUMNER  
WHITSITT

SETTLE  
SWEANY  
WILSON

SHADES  
TAYLOR  
WILSON

SHOUSE  
VINYARD  
WYATT

FRED RENSIAW  
HOWARD RHODES  
PAT SETTLE  
LEONARD SHADES  
MARY BETH SHOUBE  
VIOLA STURGES  
EVERETT SUMNER  
ELLEN SWEANY

Boonville  
Hardin  
Slater  
Kansas City  
Blackwater  
Carrollton  
Bosworth  
Gallatin

HAROLD TAYLOR  
WILLIAM WATERS  
DOROTHY WHITSITT  
LOLA MAE WILSON  
PAUL VINEYARD  
WALTER WILSON  
DELMA WYATT

Slater  
Liberty  
Liberty  
Sleeper  
St. Louis  
Carrollton  
Lamar, Colo.

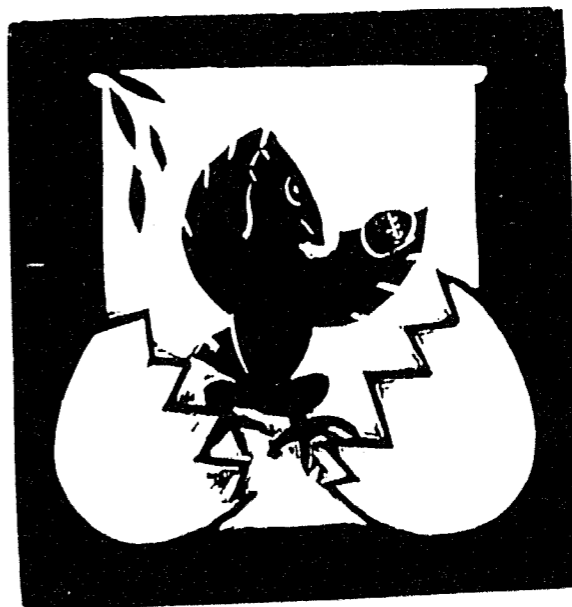
## Unphotographed

ANDERSON, JEANNE  
BAILEY, GEORGE  
BALLEW, RALPH  
BELL, KELLER  
CHANDLER, RICHARD  
CLAYPOOL, SAMUEL H.  
CROWE, BOB  
DEMASTERS, ROBERT  
DEMASTERS, RAY  
DITTO, FLORA VELLA  
FENNER, ROBERT  
FOLEY, JACKSON  
GODFREY, PAUL

Liberty  
Sheridan, Wyo.  
Liberty  
Liberty  
Independence  
Liberty  
Hannibal  
Liberty  
Liberty  
Plattsburg  
Grand Junction, Colo.  
Kansas City  
Millville, N. J.

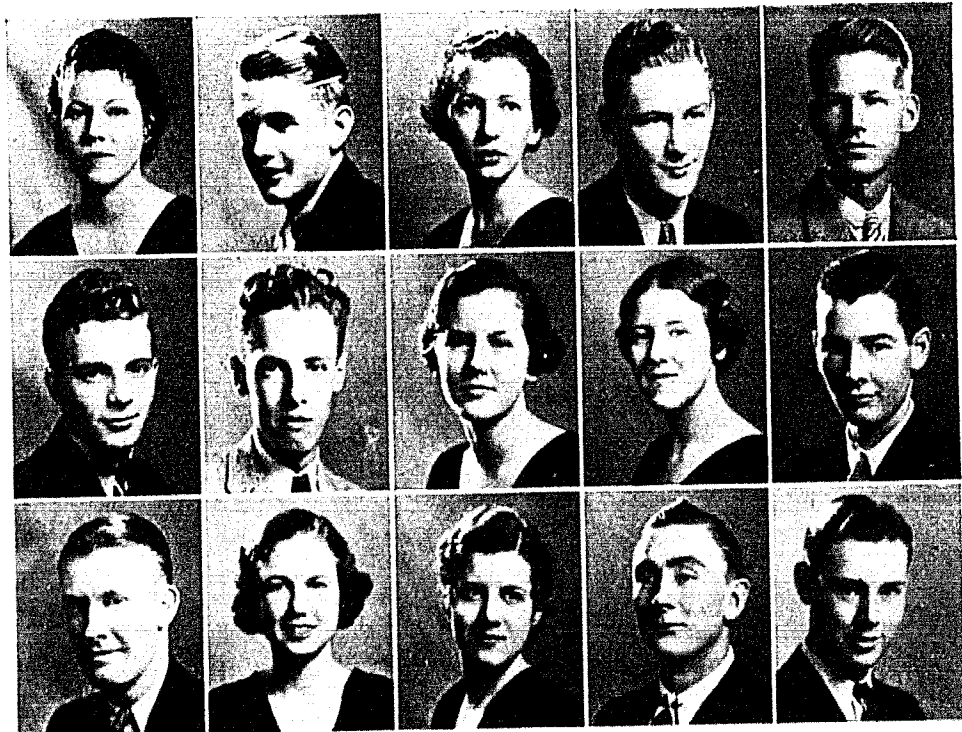
HAMMONTREE, JOHN  
HOFFT, JAKE  
HYATT, ROBERT  
JACKSON, WADE  
KING, RALEIGH  
MOORE, JACK  
PAYNE, EMMA  
SAUNDERS, FRANCES JEAN  
SHUTTY, DON  
SINGLETON, SHIELDON  
SPURGIN, MARY  
WOOD, JOHN H.

Independence  
Liberty  
Grand Junction, Colo.  
Kansas City  
St. Louis  
Joplin  
Liberty  
Liberty  
Milan  
Gower  
Winterset, Iowa  
California



*Freshmen*





ALLEN  
BRANT  
CLIFTON

BARRET  
BRUENING  
COWAN

BOGARD  
BURKHARDT  
CROCKETTE

BOWLES  
CEDERBURG  
DAVIS

BRAMMER  
CHARLESWORTH  
DUNLOP

SEGIS ALLEN  
JACK BARRET  
BARBARA BOGARD  
ROBERT BOWLES  
THOMAS BRAMMER  
RALPH BRANT  
JOSEPH BRUENING  
CONSTANCE BURKHARDT

Rothville  
Independence  
Liberty  
Liberty  
Butler  
Liberty  
Liberty  
Liberty

HELEN JEWELL CEDERBURG  
FRANK CLIFTON  
SUE COWAN  
HELEN CPOCKETT  
J. FIRTH CHARLESWORTH  
NELSON DAVIS  
RALPH DUNLOP

Excelsior Springs  
Raytown  
Kansas City  
Liberty  
Kansas City  
Liberty  
Plains, Kans.

HELEN DURHAM  
MARJORIE DU VALL  
DOROTHY ENDICOTT  
RALPH FERRIS  
SUE FOWLER  
EARL GARDNER  
EDWARD GEYER  
LLOYD GIBBS

Liberty  
Holt  
Liberty  
Junction City, Kans.  
Elmira  
Plymouth, Mass.  
Graham  
Santa Ana, Calif.

JACK HALL  
GEORGE HALE  
ROBERT HARRIS  
MARTHA HENDERSON  
DOROTHY HESSEL  
JOHN RUSSEL HICKERSON  
JOHN HOWARD

Liberty  
Springfield  
Holt  
Liberty  
Liberty  
Louisiana  
Kansas City

DURHAM  
GARDNER  
HARRIS

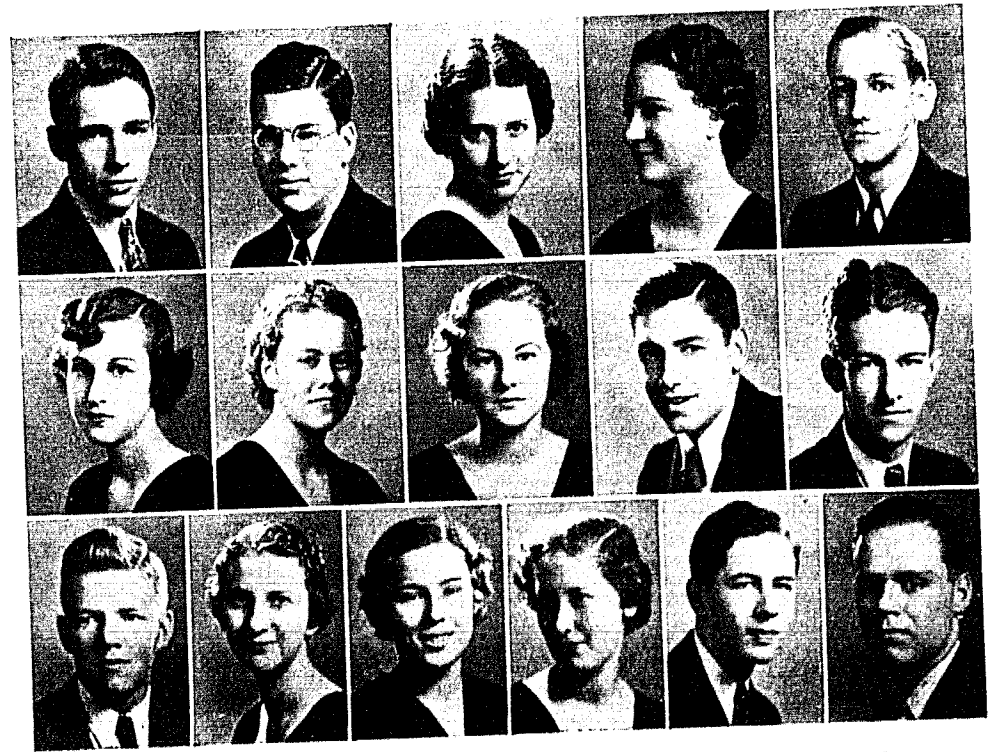
DU VALL  
GEYER  
HENDERSON

ENDICOTT  
GIBBS  
HESSEL

FERRIS  
HALL  
HICKERSON

FOWLER  
HALE  
HOWARD





HULL  
McGEE  
NEWPORT

KIRKLAND  
McKEE  
OBERDICK

LOWRY  
McKISSACK  
QUICK REED

MARSHALL  
MORALES  
REED

McINTIRE  
MORROW  
REPPERT

MAJOR HULL  
ROBERT KIRKLAND  
DOROTHY LOWRY  
MARJORIE MARSHALL  
CARL McINTIRE  
MARTHA MCGEE  
KATHRYN McKISSACK  
MILTON MORALES

Excelsior Springs  
Liberty  
Nashua  
Dearborn  
Carrollton  
Liberty  
Liberty  
Kansas City

JOSEPH MORROW  
RUTH OBERDICK  
JOHN NEWPORT  
JANE QUICK  
MARY ALICE REED  
JACK REED  
ARTHUR REPPERT

Liberty  
Farley  
Buffalo  
Hardin  
Liberty  
Liberty  
Kansas City

JOHN RIGGS	Maysville	HARRY JOE STOUTIMORE	Plattsburg
BILLY JEAN RILEY	Kearney	DOROTHY SWORD	Liberty
WAYNE RILEY	Junction City, Kans.	JOSEPH TROTTER	Carrollton
WALTER SHARP	Liberty	NELLIE TURNER	Weston
THOMAS J. SHOUSE	Liberty	ROBERT TURPIN	Liberty
LOUISE SMITH	Kearney	MARJORIE WAGY	Liberty
MILDRED SMITH	North Kansas City	HELEN WILCOX	Kansas City
LYNN SOLOMON	Lebanon	CLYDE WILLIAMS	Kansas City

RIGGS  
SMITH, L.  
TROTTER

RILEY  
SMITH, M.  
TURNER TURPIN

RILEY  
SOLOMON  
WAGY

SHARP  
STOUTIMORE  
WILCOX

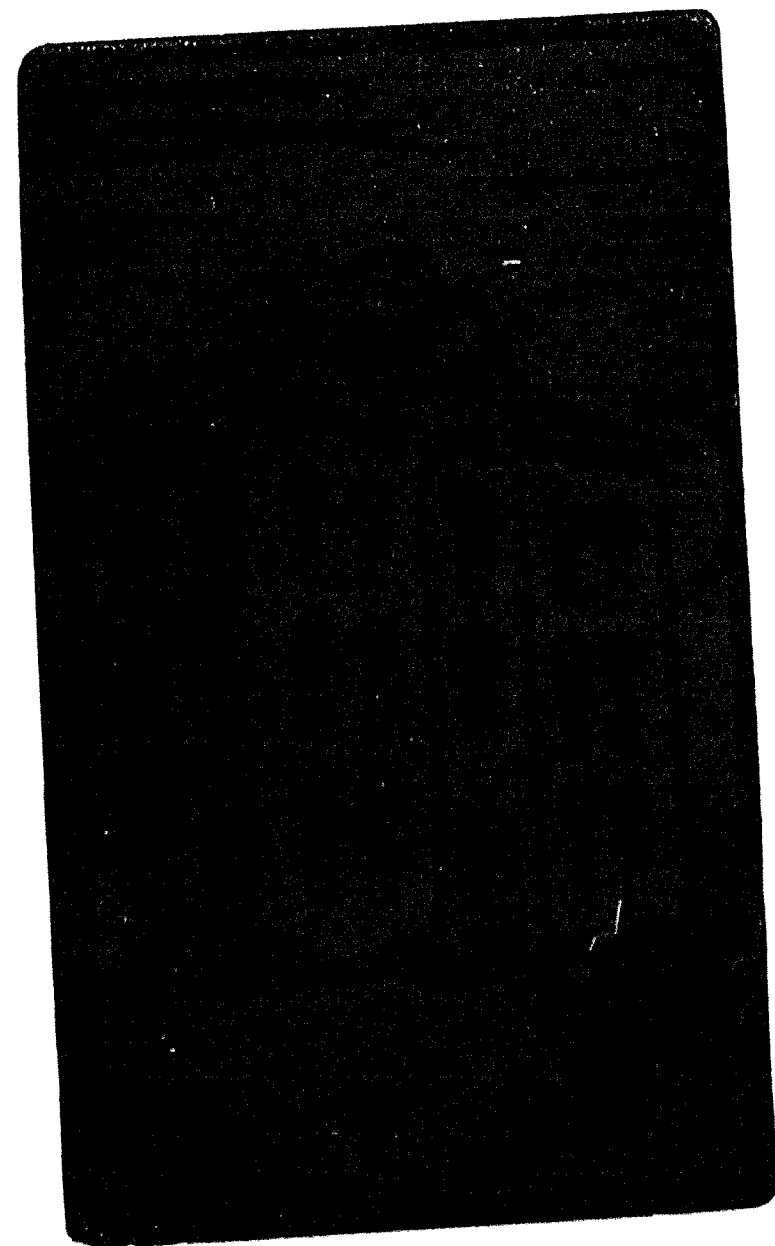
SHOUSE  
SWORD  
WILLIAMS



## Unphotographed

ALLEN, CHARLES	Winter Haven, Fla.	LILLARD, JOE	Williamstown
BAILEY, ALBERT	Casper, Wyo.	MANN, WILLIAM	Kansas City
BARTLETT, ERMA	Smithville	MILLS, RAY	Batesville, S. D.
BRUNER, ESTIL	Liberty	MODES, EDWARD	Detroit, Mich.
BUELL, CORBIN	Liberty	MOORE, GENTRY	Hornersville
BURD, FLOYD	Lebanon	RAINWATER, IVAN	Bolivar
CARSNER, ALBERT	Delta, Colo.	REARDON, V'LORA	Liberty
CRAIG, WILLIAM	Whiting, Kans.	STILLWAGON, GROVER	North Kansas City
DAY, RUTH	Grand Junction, Colo.	STIRK, RICHARD	Scenic, S. D.
DIMAN, HARRY	Chicago, Ill.	STUART, JAMES	Liberty
EUBANKS, HERBERT	Monett	SUAREZ, ADRIAN	Douglas, Ariz.
FIGHTMASTER, DOROTHY	Liberty	SUTTON, CLARA	Liberty
FOX, VERDA	Corning, Iowa	SUTTON, CLARENCE	Liberty
FRIESON, AARON	Pleasanton, Kans.	SWANSON, STANLEY	Casper, Wyo
HAMMOND, LORENE	Harris	TIBBETTS, JAMES	Liberty
HIX, JORGE	Grand Junction, Colo.	WHISTLER, CLARK	Pawnee, Okla.
HOUBE, JOHN	Kansas City	WHITLATCH, THOMAS	Turner, Kans.
HUNT, LESTER	Glendale, Ariz.	WILSON, GEORGE	Kansas City, Kans.
		YALE, ALFRED	Independence

BOOK  
TWO



*The A*ctivities

## FORENSICS



W. PREWITT EWING, A. B.  
Coach of Debate  
Instructor in English

The forensic season was opened with William Jewell meeting a team from the University of London, England, our sixth international debate, and the first of its kind in which William Jewell presented a woman debater, Mary Belle Burch. From this point, debating the Pi Kappa Delta question of Arms and Munitions, the teams went through a spectacular and interesting season for a total of sixty-two debates. Three times the debaters presented their cases over the radio, through the courtesy of stations KMBC and WDAF of Kansas City, and station WSM of Nashville, Tennessee. The record will show that the teams appeared before ten off-campus audiences, that the teams won fifteen out of twenty-three decision debates and that William Jewell was the only college to have both her debate teams in the finals of the Pi Kappa Delta Provincial Tournament, each winning second place in its respective division. Of thirty-five students who reported for debate at the beginning of the season, twelve remained to hold high the name of William Jewell in forensics. Listed alphabetically they are: Joe Amery, Clair Brewer, Mary Belle Burch, Annajane Burkhardt, Constance Burkhardt, Jim Cope, James Davidson, Alice Hockett, Elias Huzar, Burnett Magruder, Betty McGonigle and Grace Prewitt. The complete record is given below:

November 22, 1934:

Burch-Davidson (Neg.) vs University of London, England. Mary Belle Burch and James Davidson took the Negative side of the question "This House Favors the Nationalization of Munitions Industry" against a men's team from the University of London. Miss Burch is the first woman to represent William Jewell in an International Debate. In the afternoon preceding the debate the two teams engaged in an informal discussion of the question over radio station KMBC. Hon. Reginald Davidson was chairman of the evening debate.

December 1, 1934:

Talton Parker with "The Arrow Makers" represented William Jewell in the Missouri State Peace Oratorical Contest, at Jefferson City, in the Senate Chamber of the Capitol.

Throughout the regular season the question for debate was the national question selected by Pi Kappa Delta: Resolved that the Nations should agree to Prevent the International Shipment of Arms and Munitions.

January 9, 1935: Before Metro Club, Muehlbach Hotel, Kansas City.

Cope-Magruder (Neg.) vs Rockhurst College . . . . Lost

January 17:

Jewell and Park in Congressional Debate: Affirmative: Prewitt, Huzar, Brewer, A. Burkhardt; Negative, Burch, Davidson, McGonigle, C. Burkhardt. Negative Won.

January 22: At Maryville

Burch-Prewitt (Neg.) vs Northwest Missouri Teachers—No decision.

January 28:

Amery-Huzar (Aff.) vs Wentworth Military Academy—No decision

January 30: At Parkville

Jewell and Park in Congressional Debate: Affirmative: McGonigle, Burch, Hockett, Amery; Negative: Prewitt, Cope, Huzar, Brewer. Affirmative won.

February 6: At Liberty Christian Church

Amery-Huzar (Aff) vs Kansas City University—No decision.

February 8-9: Missouri College and University Tournament at Missouri Valley College.

Amery-Huzar in Men's Debate:

Affirmative vs Northwest Missouri Teachers—Lost

Negative vs Central College—Won

Affirmative vs Southwest Missouri Teachers—Won

Negative vs Missouri Valley—Lost

Burch-Prewitt in Women's Debate:

Affirmative vs Culver-Stockton—Won

Negative vs Southeast Missouri Teachers—Won

Affirmative vs Northwest Missouri Teachers—Won

Negative vs Principia—Won

Affirmative vs Southeast Missouri Teachers, semi-finals—Lost

February 13:

Brewer-Huzar (Neg.) vs Peru Teachers (Neb.)—No decision.

Cope-Davidson (Aff.) vs Peru Teachers—No decision.

February 15:

C. Burkhardt-McGonigle (Aff.) vs Tarkio College.—No decision

Burch-Prewitt (Neg.) vs Tarkio College—No Decision

February 15-16: Kansas-Missouri No-decision Tournament at Kansas City School of Law:

AMERY HOCKETT	BREWER HUZAR	BURKHARDT, A. MAGRUDER	BURKHARDT, C. MCGONIGLE	DAVIDSON PREWITT	PARKER
------------------	-----------------	---------------------------	----------------------------	---------------------	--------



Amery-Huzar (Aff.) vs Missouri Valley College  
 (Neg.) vs Northeast Missouri Teachers  
 (Aff.) vs Park College  
 (Neg.) vs Emporia Teachers [Kansas]  
 (Aff.) vs Pittsburg Teachers [Kansas]

Prewitt-Cope (Neg.) vs Emporia Teachers  
 (Aff.) vs Park College  
 (Neg.) vs Baker University  
 (Aff.) vs Missouri Valley College  
 (Neg.) vs Northeast Missouri Teachers

In ranking the individual debaters the judges placed Joe Amery third among the thirty debaters represented in this tournament.

February 24: Second Presbyterian Church, Kansas City, Missouri  
Amery-Davidson (Neg.) vs Kansas City University—No decision

February 28:

Davidson-Amery (Aff.) vs Drury College—No decision.

March 1:

William Jewell was host to the Missouri Collegiate Oratorical Association. Talton Parker spoke on "The Challenge of Change". Mr. Sener of Culver-Stockton won first place, and second place went to Miss Meador of Drury.

March 8: Before Fortnightly Study Club

Davidson-Burch (Aff.) vs Huzar-Prewitt (Neg.)—No decision

March 12: Radio Debate over Radio Station WDAF.

Huzar-Davidson (Aff.) vs Rockhurst College. Votes on the debate came from 112 cities representing 19 states. The result was: Affirmative, 148; Negative, 191.

March 13:

Cope-Amery (Neg.) vs University of Missouri—No decision

March 14

C. Burkhardt-Cope (Neg.) vs Kansas City, Kansas, Junior College.—No decision

March 15: Pleasant Grove Literary

Burch-Prewitt (Aff.) vs Amery-Huzar (Neg.) Aff. won 3-0.

March 19: Lexington, Missouri, High School

Cope-Amery (Aff.) vs Westminster College—No decision

March 21: Kansas City, Kansas

Brewer-C. Burkhardt (Aff.) vs Junior College—No decision.

March 22:

Davidson-Huzar (Neg.) vs Pacific University, Oregon—No decision

March 23:

Burch-Huzar (Neg.) vs University of Oklahoma—No decision

March 26: Nashville, Tennessee

Mary Belle Burch and Grace Prewitt in split-team debate with Vanderbilt University women over radio station WSM.—No decision  
 Amery-Huzar (Neg.) vs Vanderbilt University—No decision  
 Burch-Prewitt (Aff.) vs Vanderbilt University—No decision.

March 28-29-30: Pi Kappa Delta Provincial Tournament at Southeast Missouri Teachers College, Cape Girardeau

Women's Debate:

Prewitt-Burch (Aff.) vs Iowa Wesleyan—Won  
 (Neg.) vs Iowa Central—Lost  
 (Aff.) vs Culver-Stockton—Won  
 (Neg.) vs Penn College, (Iowa)—Won  
 (Aff.) Parsons College, (Iowa)—Won 3-0  
 (Neg.) vs Southeast Mo. Teachers—Lost 1-2

The debate with the Cape Girardeau Teachers was the final debate of the tournament in which 13 colleges were represented. By thus being in the finals William Jewell was awarded a loving cup for second place and Misses Prewitt and Burch received individual medals.

Men's Debate:

Amery-Huzar (Neg.) vs Iowa Wesleyan—Won  
 (Aff.) vs Northwest Missouri Teachers—Lost  
 (Neg.) vs McKendree College, (Illinois)—Won  
 (Aff.) vs Central Missouri Teachers—Won  
 (Neg.) vs Culver-Stockton—Won  
 (Neg.) vs Park College—Won  
 (Neg.) vs Westminster College—Lost

Huzar and Amery by going into the finals against Westminster made William Jewell the only college in the tournament to have both its debate teams in the finals of both divisions, won second place out of 15 colleges, and were awarded a cup for the college and individual medals for their achievement.

In Extemporaneous Speaking:

Grace Prewitt—Fourth out of nine.

Elias Huzar—Sixth out of twelve.

April 1:

Amery-Cope (Aff.) vs Emporia Teachers, Kansas—No decision

McGonigle-C. Burkhardt (Neg.) vs Emporia Teachers—No decision

Burch-Prewitt (Neg.) vs Emporia Teachers—No decision.

April 11: Westport High School Public Speaking Class, Kansas City

Huzar-Amery (Aff.) vs Burch-Prewitt (Aff.)—No decision.

April 27: Upper Missouri Presbytery, Richmond, Missouri

Cope-Huzar (Aff.) vs Westminster—No decision.

# ALPHA PHI OMEGA



AULL	BETTS	DAVIDSON	FORDHAM	GARDNER
HAMMOND	HILTON	MARQUETTE	McELWAIN	PAGE
QUICK	RAMIREZ	RENSHAW	RICHARDS	WHITE

The first movement for an organization of former Scouts on the William Jewell campus was the Fall of '31, when the Jewell Scout Legion was formed with a membership of twenty-seven. In Dec. '34, this organization became the Alpha Mu chapter of Alpha Phi Omega, National Honorary Scout Fraternity, with thirty-one members.

The purpose of the fraternity is to assemble college men in the spirit of the Scout Oath and Laws, to develop friendship, and to promote service to the youth of America, Friendship, Leadership, and Service being the three cardinal guiding principles of the fraternity.

C. W. Page .....	Pres.	William Richards .....	Publicity Agent
Ralph Cooper .....	Vice Pres.	Judge E. E. Kirkland .....	Local Scouting Advisor
Dale Bogard .....	Scribe	Dr. H. I. Hester .....	Senior Faculty Advisor
Ciro Ramirez .....	Treasurer	Dean Moon .....	Faculty Advisor
Fred Renshaw .....	Sergeant-at-Arms	Dr. F. G. Edson .....	Faculty Advisor
Peter McPhee .....	Chaplin	Dr. John F. Herget .....	Honorary Member
Earl Gardner .....	Parliamentarian		
George Aull .....	Publicity Agent		

Members

George Aull, Leon Beck, George Benson, Jr., Clarence Betts, Dale Bogard, Ralph Cooper, James Davidson, Buford Fordham, Earl Gardner, George Hale, Jack Hall, Ardath Hammond, Richard Hilton, Major Hull, Robert Kirkland, Lindon Maddox, W. R. Marquette, Ralph McElwain, Edwin Monroe, Chas. Estep, C. W. Page, Oz Quick, Ciro Ramirez, Fred Renshaw, William Eubanks, William Schaefer, Stanley Swanson, Harry Trotter, Joe Trotter, Peter McPhee, Donato Ramirez.

## PANAEGIS



BAILEY

COX

HALL

WICKSTROM

WILLIS

Panaegis, the senior women's honorary society, is composed of five members, chosen from the junior class for leadership and outstanding ability. The organization has as its purpose the serving of William Jewell College in every way possible. Miss Virginia D. Rice is sponsor.

## AEONS

Whose purpose furthers the interests of William Jewell College

ALLEN      BROWN      DAVIDSON      HUFF      REPPENHAGEN      REYNOLDS      TRABUE



## GAMMA PI EPSILON



GILBERT REYNOLDS  
EDITOR Student  
FALL '34



LUCILLE HALL  
EDITOR 1934 *Tatler*



WILSON BROWN  
EDITOR Student  
SPRING '35

Gamma Pi Epsilon is composed of editors and past editors of student publication, *Tatler* and *Student*.

Purpose: To guide and direct student editors and to elevate the journalistic standing of the official student body publications. Gamma Pi Epsilon has consistently recommended the selection of capable candidates for offices of the *Tatler* and *Student*.



ROBERT LYON  
Student EDITOR  
SPRING '34



C. LOWELL SMITH  
EDITOR 1935 *Tatler*

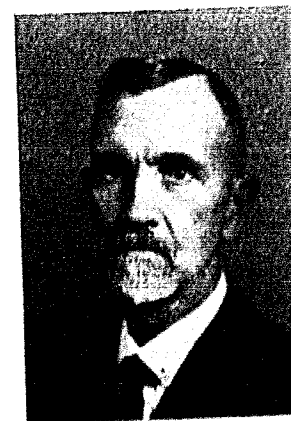
## MEN'S BIOLOGY CLUB BETA LAMBDA



BROWN    BROWNING    GAINES    MUCHMORE    SETTLE    SMITH, J.    SMITH, L.  
FRETWELL    MINOR    SHEETZ    STURGES    TRUFX

This year Beta Beta Beta dropped its National affiliation and became a member of the Missouri Academy of Science. Although the name of the organization has been changed to "The Men's Biology Club", it still pursues the same interests as it did under the national title. The club meets every two weeks at the home of Dr. Elmore to discuss topics pertaining to biology. The members are: Wilson Brown, Robert Browning, Carl Gaines, Cloyd Muchmore, Garner Settle, James Smith, Lowell Smith, and Nevin Wetzel.

Beta Lambda, girl's biology club, meets twice a month at the home of Dr. Elmore to discuss biological current events and problems. Miss Helen Churchill, the instructor, is also the sponsor. Miss Bessie Gillette, loyal alumnae, is gubernatrix of the club. The members are: Dorothy Truex, Lois Gene Sheetz, Viola Sturges, Irene Minor, and Helen Fretwell.



C. J. ELMORE, Ph.D.  
Head of the Department  
of Biology



HELEN CHURCHILL, A. B.  
Instructor in Biology

## MUSIC

Mr. David Grosch has for several years been head of the Department of Music. Mr. Grosch is one of the outstanding musical directors and teachers of Kansas City.

He directed and managed Kansas City's first (summer) operas which were given in the open air theatre at the Unity Farm. Mr. Grosch was very successful in this work and he has been engaged to direct another series of open air operas for the summer of 1935. He also trained and directed a chorus of 600 voices which sang an oratorio at Convention Hall in Kansas City this Spring. The oratorio was written by Van Denman Thompson for the celebration of the 150th anniversary of the organization of the Methodist Church in America. Madame Ernestine Schumann-Heink was one of the outstanding soloists. Seventy-five members of the Kansas City Philharmonic orchestra played the accompaniment. About fifty of the college students as well as several people from Liberty sang in the chorus.

Both the Women's and Men's Glee Clubs were larger this year than ever before. They sang a short oratorio at a special Chapel service just before the holidays in December. This oratorio was written to celebrate the 300th anniversary of the landing of the Pilgrims. Mr. Grosch not only directed the oratorio, but also sang the solo score. The Men's Glee Club sang before an audience of about 1300 persons who had come to Liberty to participate in the annual spring rally of the Baptist Young People's Unions of Kansas City.

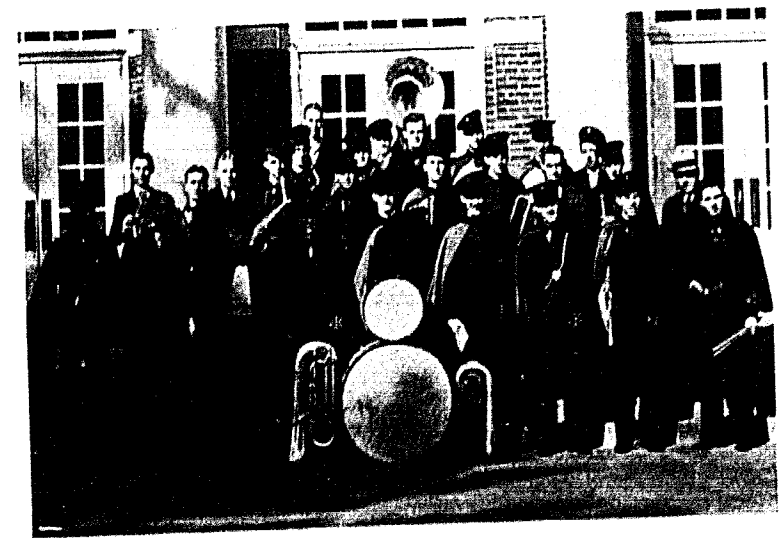
The season was completed by a concert trip which included both Glee Clubs. Mrs. E. L. Black of Liberty was piano accompanist for the glee clubs and was very generous with her time and talent.

Professor Grosch teaches the course in Music appreciation besides training and directing the Glee Clubs and the band. Mr. Grosch has had exceptional training having taught in Chicago Musical College, Bush Conservatory, and was Dean of Conservatory of Music, Baker University. He studied voice with Adolph Schulze of Berlin; piano with John Petrie Dunn of Edinburg; oratorio with Dr. Charles Allum of London; Opera with Hermann Devries of Chicago; and composition with Samuel DeLange of Stuttgart, Germany.

## MUSIC

William Jewell's Band this year was at its best. Early in the Fall Professor Grosch began to train the men. Some up-to-date college band music was purchased and with it the band created and sustained a lively spirit on the college campus during the football season. In addition to playing at all the home games the band played at Ottawa and Baldwin, Kansas. Several pep meetings were held last Fall before the football games and the band had a prominent part in arousing enthusiasm by its music.

Earl C. Whitsitt assisted Mr. Grosch and directed the band at all performances.



Hickerson, Realling, Allen, Whitsitt, Thompson, Chandler, Waters, Swanson, McElwain.  
Dunlop, Duncan, Davidson, H. Trotter, Durham, Tibbetts, J. Trotter  
Shanks, Kindred, Prof. Grosch.  
Singleton, Muchmore, Coen, Brower, Betts, Craig.  
Burd.

# WILLIAM JEWELL PLAYERS



VIRGINIA D. RICE, A. M.  
Director of Dramatics  
Instructor in English

The William Jewell Players is an organization which includes all those who are actively interested in any phase of the drama. Membership in this organization must be established at the beginning of each year if the student wishes to tryout for the plays. The activities of the William Jewell Players are confined to intermittent meetings, and the production of both one-act and three-act plays during the year.

This year, during the Fall term, an evening of recreation was provided by the Players' presentation of two one-act comedies, "Sauce for the Goslings", and "The Villian Still Pursues Her". For the first time in many years an original musical comedy, "Rise and Shine", was written and presented. Lucille Hall and Virginia D. Rice, the director, were responsible for the script, and the audience seemed pleased with the variety and spectacle which the show offered.

On February fifteenth, for the second time in the history of dramatics at William Jewell, an Ibsen drama was attempted. "Ghosts" was the vehicle chosen, and the college students proved themselves able interpreters of the difficult roles. The cast:

Mrs. Alving  
Oswald Alving  
Pastor Manders  
Jacob Engstrand  
Regina

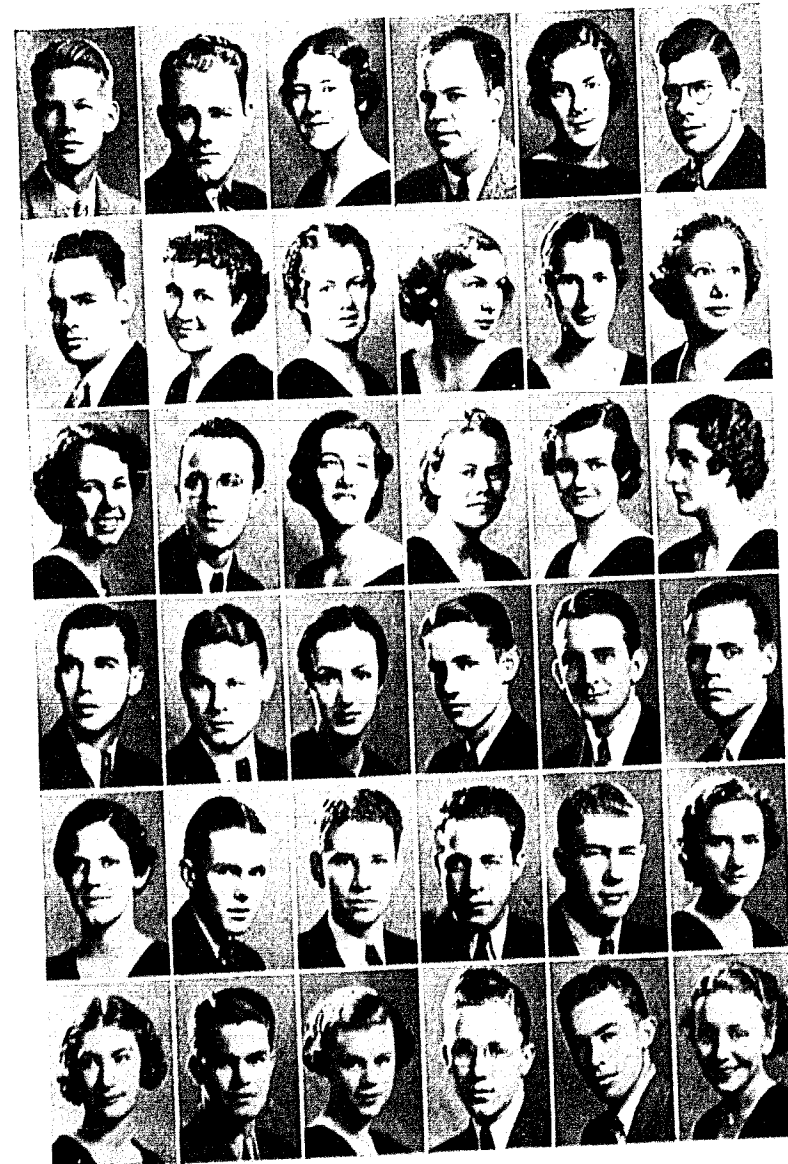
Barbara Bogard  
William Waters  
George White  
L. M. Proctor  
Else Byrns

The William Jewell Players had a number of short trips to High Schools with the workshop plays, besides presenting at the Chapel hour, a one-act tragedy on April sixteenth. The play given the spring term added variety to the years program, for George M. Cohan's, "The Tavern", was used. Melodrama, comedy, and a touch of mystery gave the actors an opportunity for much abandon.

Cooperating with the Alpha Psi Omega the William Jewell Players were hosts to the High Schools in a One-Act Play Festival held April nineteenth.

Consequently, the year in drama has been a drama in three acts with Prologue and Epilogue. The Prologue was the short plays, i. e., the initial performance. The Epilogue was provided in the form of the Senior play, given May 27, 1935.

To Virginia D. Rice is owed the success of the year's drama. Coupled with her excellent choice of vehicles, was her tact, diplomacy and patience in directing them.



BRAMMER  
BROWN  
CEDERBERG  
DAVIS  
DONALDSON  
DUNCAN

DURHAM  
EUBANKS  
HALEY  
HALL  
HEINLEIN  
HESSE

HOCKETT  
JARVIS  
MCGONIGLE  
MCKEE  
O'LETT  
PARKER

PARKER  
PITNEY  
PREWITT  
PROCTOR  
RATHMANS  
REPPERT

SETTLE  
SCHAEFER  
SHARP  
SMITH  
SOLOMON  
SWORD

TRUFEX  
TURNER  
WAGY  
WATERS  
WHITE  
YATES

## ALPHA PSI OMEGA



BECK                      DUNCAN                      HALL                      PARKER  
RATHMANN                      SHEETZ                      TRUOX                      WHITE

In 1932, Beta Pi Cast of Alpha Psi Omega, a national honorary dramatic fraternity was installed on our campus with five charter members. Since that year, the average membership of ten to twelve has been limited to those who have achieved some distinction in dramatics by required quantity and excellent quality of their work in dramatic art. Each month the group meets at the home of one of the members where some current play is reviewed or some topic relative to drama is discussed.

Alpha Psi Omega was host to several high schools on April 19, conducting a One-Act Play Festival. A formal dinner was held during the spring for the members and their alumni.

### OFFICERS

The Grand Director  
The Stage-Manager  
The Business Manager  
Sponsor  
Honorary Member

Donald Duncan  
J. C. Rathmann  
Lucille Hall  
Virginia D. Rice  
Dr. J. P. Fruit

### ACTIVE CAST MEMBERS

Lucille Hall, Fern Eubanks, Inez Yates, Dorothy Truex, Alice Hockett, Lois Gene Sheetz, J. C. Rathmann, Arnold Fenner, Burton Beck, George White, Talton Parker, Donald Duncan, Judson Palmer, L. M. Proctor.

### UNDERSTUDIES

Betty McGonigle, Betty Parker, Margaret Rand, William Waters

### FRATRES IN URBE

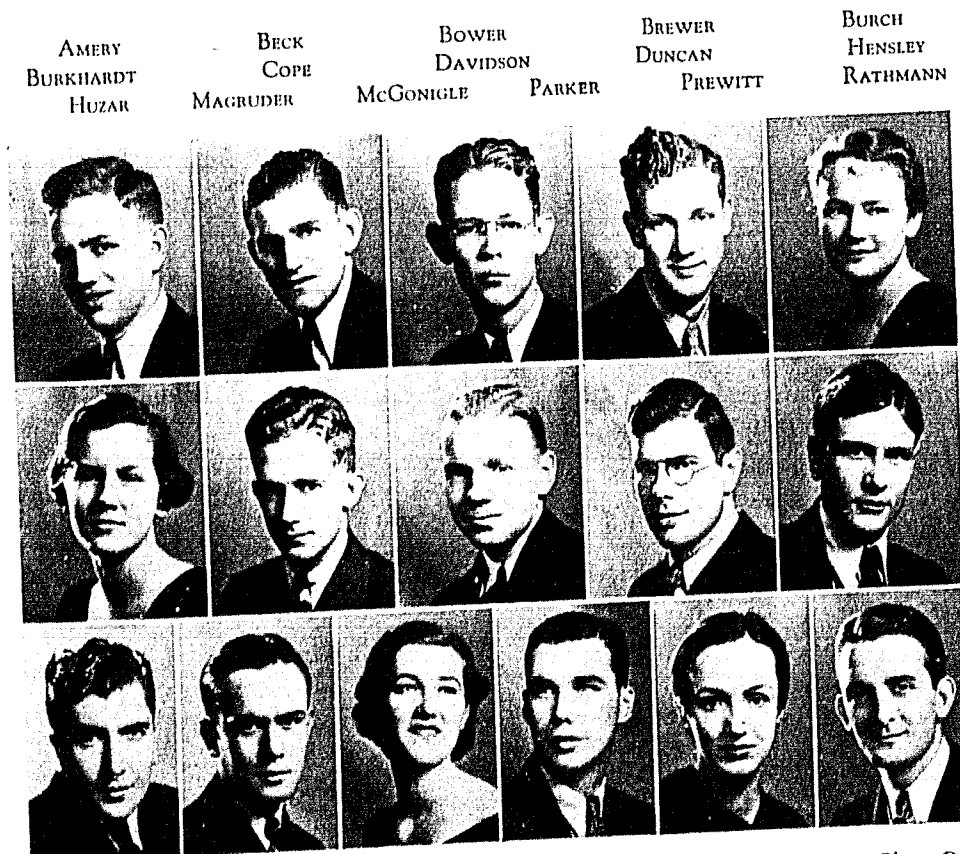
Georgia Bessie Bowman, Ben Clarke, Genter Stephens, Charles Hoffman.

## PI KAPPA DELTA



Pi Kappa Delta, a national honorary forensic society with 148 chapters in 40 states and Puerto Rico, was established in 1913 to coordinate, and to stimulate interest in forensic activities among American colleges and Universities. Membership is awarded by its local chapters upon the basis of intercollegiate competition standards prescribed by the national organization.

The local membership composes the Missouri Delta chapter, established in 1922 under the forensics directorship of Professor P. Caspar Harvey. Women were first admitted to the local chapter in 1927. Since 1929, W. Prewitt Ewing, Director of Forensics, has been the faculty sponsor of Missouri Delta chapter. Mr. Ewing is also Third Vice-President of the National Council and is Director of Publicity. James Davidson is President of the local chapter and Burnett Magruder is Secretary-Treasurer.



AMERY                      BECK                      BOWER                      BREWER                      BURCH  
BURKHARDT                      COPE                      DAVIDSON                      DUNCAN                      HENSLEY  
HUZAR                      MAGRUDER                      MCGONIGLE                      PARKER                      PREWITT                      RATHMANN

## MINISTERIAL GROUP



BECK	BENEDICT	BROCK	CRUTCHFIELD	DUNCAN, B.	DUNCAN, D.
DUNLOP	FORDHAM	GARDENER	GIBBS	HENNON	HENSLEY
HUNT	KIRCHNER	LEE	MAGRUDER	MIKHALCHUK	MOOREHEAD
PITNEY	QUICK	REPPENHAGAN	SHADES	SMITH	SODEMAN
					WHITSITT

William Jewell, being a denominational college, naturally attracts a number of young men preparing for the ministry. Early in the history of the college the ministerial students had some sort of organization, but it was not until 1887, according to Dr. W. O. Lewis's account, that a missionary society was organized. Prof. A. J. Emerson was an active promoter of the work of the society. A great deal of interest in missionary work was manifest at that time and the society furnished the following of its members to the foreign mission boards to go to foreign fields: J. L. Downing, Brazil; J. T. Proctor, China; John W. Lowe, China; J. S. Cheavens, Mexico; M. D. Eubank, China; W. H. Sears, China; C. Q. Rider, Peru.

For a number of years this society was active in mission work in and around Kansas City. A record from the minutes tells us that J. T. Proctor and S. E. Ewing organized and built the church at Rosedale, Kansas. As a result of a meet-

ing held by John W. Lowe about 1891 in Centropolis, the Centropolis church was organized. As a result of the labors of this society, the William Jewell church of Kansas City was organized.

Later, a Baptist Evangelical Society was organized, "designed to afford opportunities for the investigation of religious topics and for the delivery and criticism of sermons." (History of W. J. C. by J. G. Clark, p. 28.)

About 1915 the name of the society was changed to the Judson-Peck Society. In 1923 the present ministerial group was organized, and this year has a membership of nearly sixty students.

The students meet each Tuesday afternoon from three to four o'clock. Programs consist of special messages of inspiration and instruction from visiting speakers, student programs, discussions with those more experienced as to methods in the ministry, and other programs designed to aid the student in becoming more efficient in his calling.

Some of the outstanding speakers of the year have been: Dr. O. R. Mangum, Pastor of the Wornall Road Baptist Church, Kansas City, Mo.; Dr. Robert I. Wilson, Pastor, First Baptist Church, Kansas City; Bro. Bill Denham, State-wide Student worker; Dr. E. C. Herrick, President of Andover Newton Seminary; Dr. Albert Bevin, President of Colgate-Rochester Seminary; Dr. L. R. Scarborough, President of Southwestern Seminary at Fort Worth, Texas. Other speakers made valuable contributions to our programs including the ministers of the local churches.

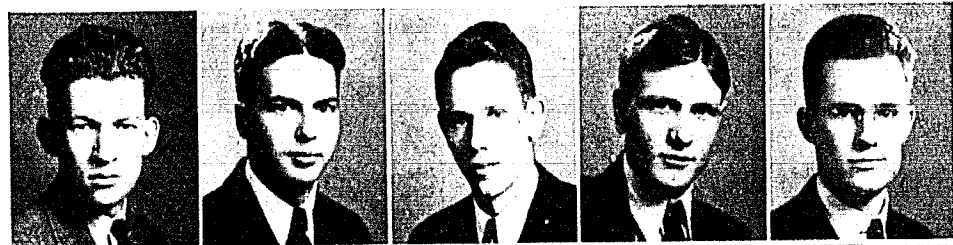
Officers of the group are elected after the first term of each school year. Those serving the first term this year (1934):

President, J. Clark Hensley  
 Vice-Pres., Peter McPhee  
 Secretary and Treasurer, John Crutchfield  
 Reporter, Leonard Shades  
 Chorister, Milan Thompson  
 Pianist, Charles Hunt

Those serving during the last two terms (1935):

President, Marvin Pitney  
 Vice-Pres., Sam Claypool  
 Secretary, Buford Fordham  
 Reporter, August Hintz  
 Chorister, H. J. Mikhalchuk  
 Pianist, Lloyd Gibbs

## ALPHA ZETA PI



BOGARD      CRUTCHFIELD      HAMMOND      HENSLEY      KIRCHNER  
 MOOREHEAD      PITNEY      RAMIREZ      SHARRAH

Alpha Zeta Pi was organized in 1924. The club has for its motto, "To stir into flame the gift of God within you."

During the year the club has had several evenings of entertainment, the first party being in January and the second one in March. Other than the parties, many fellowship meetings were held.

The colors of the club are blue and white, the flower, the lily of the valley. It is the plan of this Christian organization to give special attention to the principles of Christian character.

### The membership:

John Crutchfield  
 J. Clark Hensley  
 Peter McPhee  
 Ardath Hammond  
 Andrew Moorehead  
 Ciro Rameriz  
 Paul Sharrah  
 Jack Foley  
 Robert Hyatt  
 Clark Whistler  
 Wade Cochrane

Dale Bogard  
 Charles Hunt  
 Buford Fordham  
 Ralph McElwain  
 Estil Bruner  
 Earl Whitlatch  
 Clarence Sutton  
 Ralph Shank  
 Earl Gardner  
 Eugene Kirchner  
 Marvin Pitney

The officers for the year 1935 are John Crutchfield, Pres., Ciro Rameriz, Vice Pres., Buford Fordham, Sec., and Ardath Hammond, Treas.

## SIGMA RHO

Sigma Rho has been active on William Jewell campus for a decade, having for its motto I Timothy 6:11; its flower, the pink rose; colors, silver and rose.

The officers for the past year were: Margaret Davidson, president; Mary Stone, vice-president; Viola Sturges, Secretary; Nadine Haley, treasurer; Mrs. F. M. Derwacter is sponsor of the group.

Social activities during the first part of the year included a tea at the home of Mary Stone, in Kansas City, and a New Year's party at the home of Mrs. Derwacter. Mary Stone also entertained the members of Sigma Rho at a weekend house party in March. Later in the spring a picnic was enjoyed and the climax of the year was a dinner party.

### MEMBERS

Margaret Bailey  
 Margaret Davidson  
 Ruth Day  
 Verda Fox  
 Helen Fretwell  
 Nadine Haley  
 Cyrena Jennings

Alyce Jones  
 Irene Minor  
 Marguerite Mullins  
 Emma Payne  
 Mary Spurgin  
 Mary Stone  
 Viola Sturges

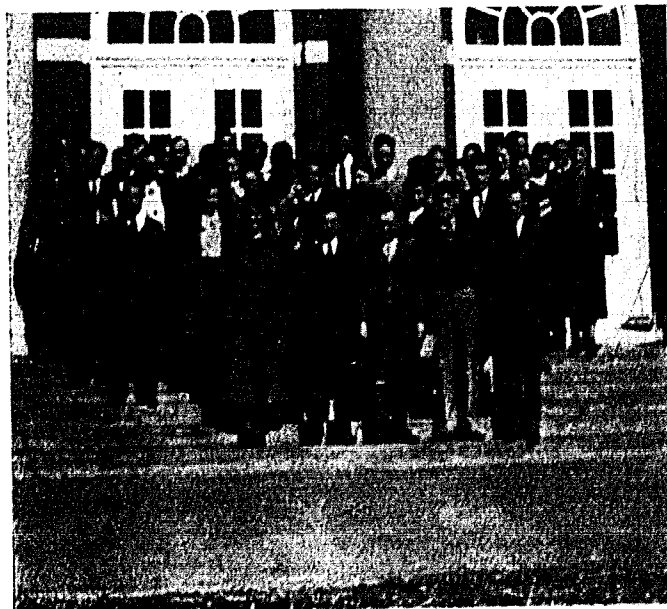
BAILEY      DAVIDSON      FRETWELL      JENNINGS  
 HALEY      STONE      STURGES



## STUDENT VOLUNTEERS

Throughout the history of William Jewell College, Christian students have maintained organizations which preserve the religious ideals for which the college was founded. Of these organizations, the Student Volunteer group has always played a prominent part in the maintenance of religious enthusiasm on the William Jewell campus. During the past school year the organization carried on the work in a creditable manner. The conflict of interests among Christian students and additional religious interests were obstacles which had to be met in the execution of this year's program.

Under a staff of officers which served during the entire year, the work of the Student Volunteers was carried on in various places. The mission activities included services at the local jail, the Helping Hand Mission and the City Union Mission in Kansas City. Many outstanding speakers were heard at the regular meetings, in addition to various student programs. The students also maintained a regular noon-day prayer service and work at the I. O. O. F. Home in Liberty. The officers for the past year were: Burnett Magruder, president; Lowell Sodeman, vice-president; Margaret Bailey, secretary; Nadine Haley, Margaret Davidson, and August Hintz, program chairmen; Charles Hunt, John Crutchfield, and Leonard Shades, deputation chairmen; and Frances McGraw, pianist.



## Y. W. C. A. -- Y. M. C. A.



DONALDSON  
REYNOLDS

PREWITT  
SCHAEFER

DAVIS  
LYON

BYRNS  
WATERS

BURCH  
KOCH

Y.W.C.A. was organized on this campus in 1924 and was made a member of the National organization in 1929.

The organization was influential in interesting the boys of the campus in forming a Y.M.C.A. and the two organizations have worked in conjunction, sponsoring a series of four teas for the purpose of breaking down social barriers between campus groups, sponsoring, with International Relations Club and Pi Gamma Mu, such lecturers as Paul Harris, Director of the Youth Movement for World Recovery, Major Douglass Booth, Carnegie lecturer, and Dr. J. Brewton Berry of the Sociology Department of the University of Missouri.

### Y.W.C.A. Officers

President.....Dorothy Donaldson  
Vice President.....Grace Prewitt  
Secretary.....Eleanor Davis  
Treasurer.....Else Byrns  
Program Comm.....Mary Belle Burch

### Y.M.C.A. Officers

President.....Gilbert Reynolds  
Vice President.....William Schaefer  
Secretary.....Robert Lyon  
Treasurer.....William Waters  
Historian.....George Koch

## PI GAMMA MU



BELLES PARKER    DAVIDSON RATHMANN    HENSLEY REPPENHAGEN    MUCHMORE REYNOLDS    HUZAR SHEETZ    PAGE SHIMODA

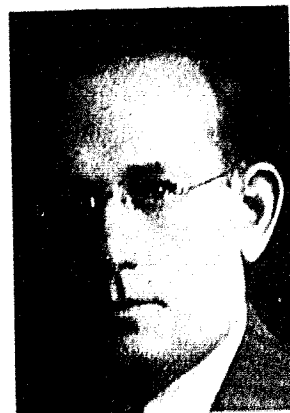
Missouri Epsilon of Pi Gamma Mu, organized in 1931, is restricted in membership to juniors and seniors who have a high scholastic record in the social sciences. More than an honor society, it carries on an active program, among other activities bringing to the campus several outside speakers during the year. The purpose of the organization is to inculcate ideals of scholarship, scientific attitude and method and social service in the study of social problems. It advocates no particular social philosophy, but seeks to destroy social ignorance, passion and prejudice. It seeks to unite the spirit of social idealism with the spirit of science.

The members: Davidson, Huzar, Muchmore, Rathmann, Shimoda, Hensley Koch, Page, Reppenhagen, Vike, Hintz, Moore, Parker, Reynolds, Wickstrom, Hoover Morgan, Prewitt, Sheetz.

OFFICERS: President, Huzar; Vice-President, Parker; Secretary, Hensley; Treasurer, Muchmore.



W. C. SMITH



U. R. PUGH



HOLT SMITH

## INTERNATIONAL RELATIONS CLUB



BECK  
CRUTCHFIELD  
DONALDSON  
DAVIS

HEINLEIN  
JARVIS  
MUCHMORE  
OFFUTT

PARKER, B.  
PARKER, T.  
RAMIREZ  
RATHMANN

RENSHAW  
REPPENHAGEN  
REYNOLDS  
ROBERTSON

SHIMODA  
SUTHERLAND  
THOMPSON  
WHITE  
WHITSITT

International Relations Clubs are found in practically all of the leading colleges and universities of the World. The aim of these clubs is to further international good will by dispensing information about international affairs. The William Jewell Chapter meets once a month for discussion. It is one of the most active chapters in America.

### OFFICERS

Pres.—Julius Rathmann  
Treas.—James Davidson

Sec'y.—George White  
Faculty Adviser—Dr. Holt Smith

## THETA CHI DELTA

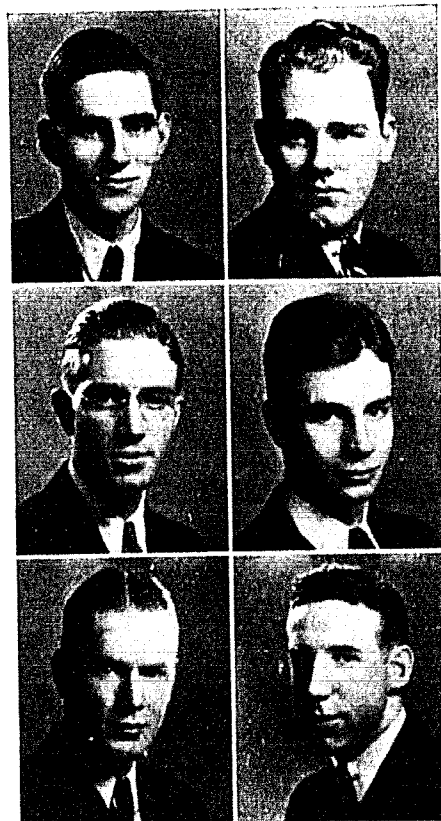
Until 1931, the Chem Club flourished, having lavish initiatory ceremonies and elaborate programs. During the year 1931, through the untiring efforts of Dr. Weida and Dr. Edson, the Alpha Nu chapter of Theta Chi Delta was established. On May 2, 1931, Dr. E. L. Hill, National Vice President of the organization duly installed the chapter into active membership. Since that time, thirty-five members have been initiated. The requirements for membership are: The student must be majoring in chemistry, must have a B average, and must be taking the fifth term of chemistry.

Theta Chi Delta meets every first and third Tuesday evening at 7:30 P. M. Several open meetings were held during the year to which visitors were invited.

Each May a banquet is given at which prominent speakers deliver addresses on subjects relative to chemistry. This year Dr. James Rice delivered an address on "The Antagonistic Action of Drugs".

Lectures give this year were: "Organic Analysis", by Forrest Aull, "Volatile Poisons and Their Physiological Effects", by Wilson Brown, "Non-Volatile Poisons and Their Effects", by Ralph Cooper, "Quacks, Nostrums, and Patent Medicines", by Carl Gaines, "Chemistry in Medicine", by Collins Hufft, "Heavy Hydrogen and Heavy Water", by Wilson Rice, and "Colloids", by Ralph Shank.

This year the following students were pledged: Dale Bogard, James Cope, Paul Godfrey, Fred Renshaw and Clyde Brower. The active members are: Carl Gaines, James Trabue, Wilson Brown, and Ralph Shank. The officers are: President, Forrest Aull; Vice President, Ralph Cooper; Secretary, Collins Hufft; Treasurer, Wilson Rice.



AULL	BROWN
GAINES	HUFFT
RENSHAW	TRABUE

## SIGMA PI SIGMA



ALLEN	COEN
HILTON	RICE
SHARRAH	

Sigma Pi Sigma, national honorary physics society, was founded at Davidson College, Davidson, N. C. on December 11, 1921. At the present time there are 30 chapters of Sigma Pi Sigma. The society was organized in order to promote interest in the advanced study of physics, to stimulate individual research, to enable members to keep pace with progress of this science, and to encourage a spirit of cooperation and friendship among those who have displayed marked ability in this study. The Xi chapter was installed at William Jewell College on May 20, 1930. The local organization established a chapter room and physics library in Marston Science Hall this year. The President, Wilson Rice, attended the National Convention of Sigma Pi Sigma held at Purdue University. Thirty colleges and universities were represented at this convention. Feature programs of the local chapter included a demonstration lecture by Mr. Cornelius Ashley of the Bell Telephone Laboratories on "Recent Advance in Telephony", and an illustrated lecture by Mr. Wallace A. Hilton, graduate of William Jewell, on the "The Motions of the Heavenly Bodies". A lecture on cosmic rays by Dr. K. K. Darrow, nationally known physicist, was attended in Kansas City. Inspection trips were also made to WDAF and the T. W. A. base in Kansas City. The members, Paul Sharrah, Cyrus Allen, Richard Hilton, Chester Coen, and Wilson Rice, meet weekly with Prof. J. E. Davis, Prof. Joe Van Trump, and Dr. F. G. Edson. Current topics pertaining to physics, are discussed informally.

The Officers: President, Wilson Rice; Vice President, Cyrus Allen; Secretary and Treasurer, Paul Sharrah.

## THE STUDENT

Editor-in-chief..... G. H. Reynolds  
 Associate Editor..... W. G. Brown  
 Bus. Mgr..... E. Murphy  
 News Editors..... E. Huzar, R. Q. Lyon  
 Literary Editor..... M. Milam  
 Sports Editors..... M. Hennon, E. Monroe  
 Society Editors..... L. Hall, D. Wickstrom  
 Alumni Editor..... M. Thompson  
 Feature Editor..... E. Byrns  
 Forensic Editor..... J. Davidson  
 Religious Editor..... B. Magruder  
 Contributing Editors..... T. Parker  
 W. Jackson, C. Allen, W. Waters

Editor-in-chief..... W. G. Brown  
 Associate Editor..... E. Byrns  
 Business Mgr..... E. Murphy  
 News Editors..... L. Smith, R. Lyon,  
 G. Reynolds, E. Huzar  
 Literary Editors..... I. Yates, M.  
 McDougall  
 Sports Editor..... M. Morales  
 Society Editors..... L. Hall, D. Donaldson  
 Alumni Editors..... D. Sword  
 Feature Editor..... B. McGonigle

Under the direction of a competent staff, the *William Jewell Student* serves as a medium to bring news and information to the student body. The paper is essentially a student body publication, maintained and subscribed to by the members of the student body. The paper is a weekly publication issued each Wednesday and printed by the William Jewell Press.

Editors of the publication are selected by popular vote of the student body. An editor is selected during the latter part of the spring term and serves the first semester of the next school year as an associate editor before taking the position as regular editor. By this method, training and a certain degree of tutorship are obtained before entering the office. The elections are held, then, of a necessity twice during the school year.

Paramount among issues of the paper is one in particular which is known as the *Yellow Student*. This is a paper containing a superlative degree of that thing known as "Yellow Journalism".

Members of the *Student* editorial staff are selected by the editor.



WILSON BROWN, ED.



EMMETT MURPHY, BUS. MGR.



GILBERT REYNOLDS, ED.

## THE TATLER



BECK                      BROWN                      BROWNING                      HALL  
 DEMASTERS                      HENNON                      HUZAR                      LYON                      RAND

Traditionally, this page is the wailing wall of the annual's staff. A yearbook is no better than its budget, and a budget is no larger, proportionately, than the college it serves. Any staff can produce a large and beautiful annual with a healthy budget; but under pecuniary difficulties, the staff deserves your praise if the book is better than the budget allowed without either going in debt or having received salaries.

The staff: Robert DeMasters, photography; Burton Beck, Advertising Manager; Lucille Hall, Associate Editor; Robert Lyon, Activities; Wilson Brown, Features; Mansel Hennon, Athletics; Robert Browning, Contributing Ed.; Elias Huzar, Contributing Ed.; and Margaret Rand, Art Editor.

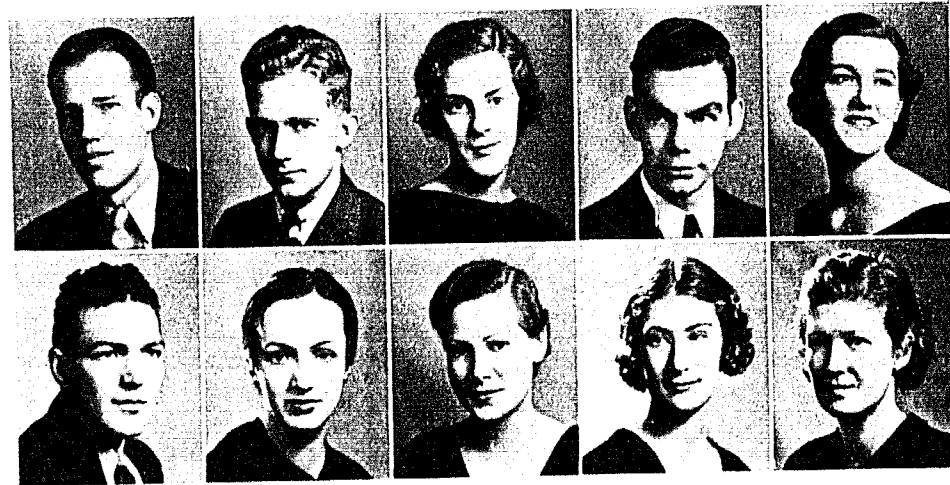


ROBERT BESSMER  
 BUSINESS MANAGER



C. LOWELL SMITH  
 EDITOR

## SIGMA TAU DELTA



BROWNING  
MILAM

COPE  
PREWITT

DONALDSON  
SHEETZ

LYON  
TRUEX

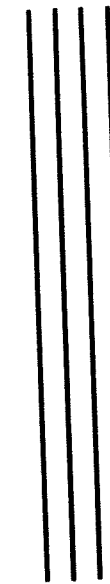
MCGONIGLE  
WILLIS

The Mu Beta chapter of Sigma Tau Delta, installed in William Jewell College in 1928, replaced the Scribblers' Club organized in 1924.

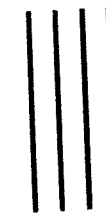
### Roster 1934-35

FranCeil Willis, President  
 Marcus Milam, Vice-president  
 Robert Browning  
 James Clinton Cope  
 Dorothy Donaldson  
 W. Prewitt Ewing  
 Arnold Fenner  
 John Phelps Fruit  
 P. Caspar Harvey

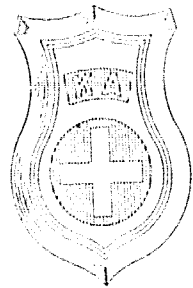
Victoria Adelaide Harvey  
 Robert Q. Lyon  
 Merrill McDougall  
 Betty McGonigle  
 Grace Prewitt  
 Virginia D. Rice  
 Lois Gene Sheetz  
 Paul Thompson  
 Dorothy Truex



*Social Fraternities*



# KAPPA ALPHA

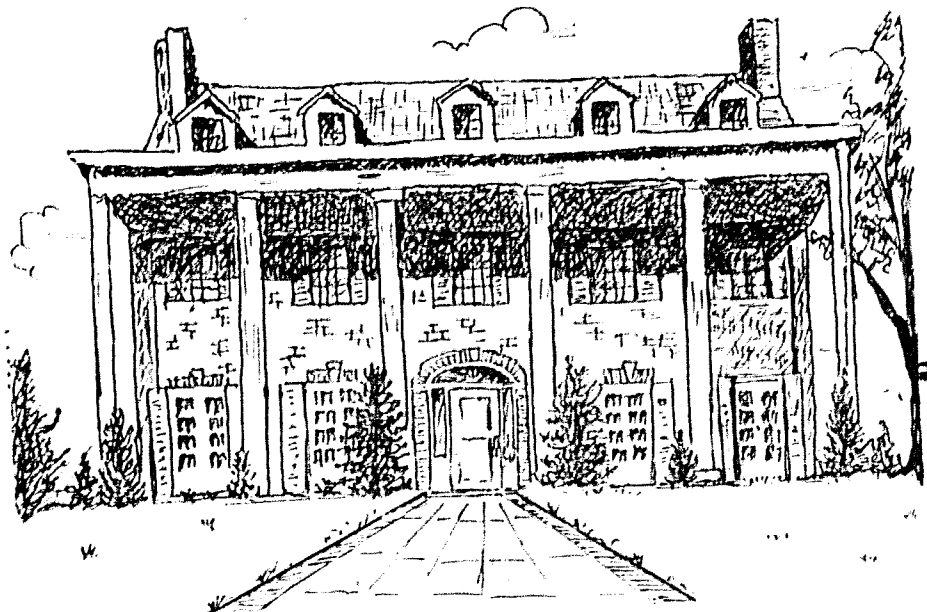


Originally known in 1886 as the "Invincible Twenty-three", this body after deliberation and study of the fraternity system petitioned Kappa Alpha for a charter.

Saturday, January 5, 1887 the Alpha Delta chapter was installed and the nine original members elected officers. For seventeen years Kappa Alpha lived in the business district then established their initial residence at Mill and Jewell Streets.

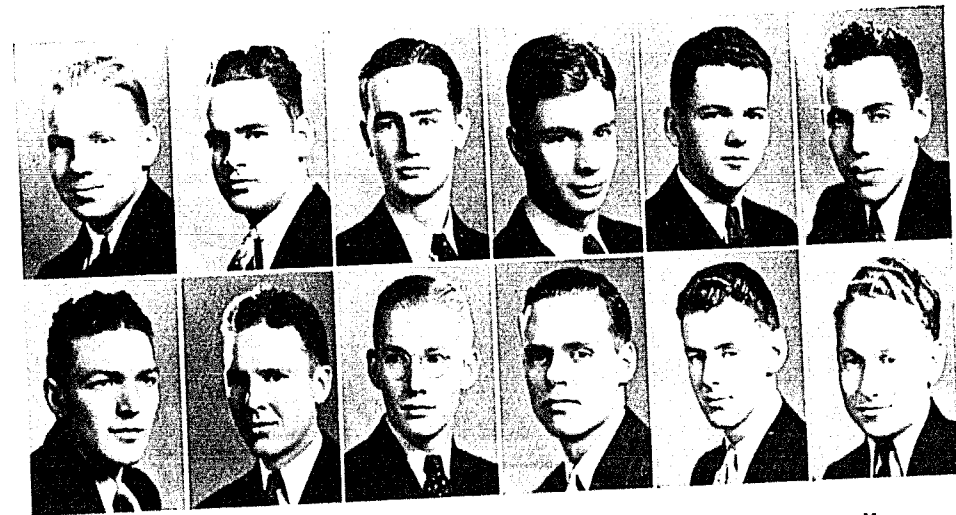
Kappa Alpha was founded at Washington and Lee University in 1865 and Alpha Delta was the thirty-second charter issued by a fraternity which has in all granted sixty-seven.

The chapter house is admirably designed for fraternity usage and architecturally symbolic of an era which the four original members of Kappa Alpha wished to preserve by perpetuating the chivalry of its gentlemen.



Page Seventy-Six

# ALPHA DELTA CHAPTER



DAVIDSON MILAM    DURHAM PAISLEY    HICKERSON PERRY    HUFFT REPERT    JOHNSON WILLIAMS    KOCH WILSON

### THE MEMBERS:

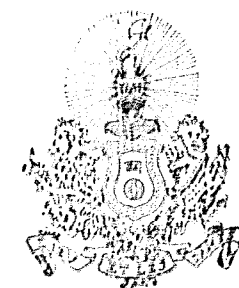
Marcus Milam  
Charles Paisley  
Ben Perry  
Arthur Reppert  
Clyde Williams  
Walter Wilson  
Carl McIntire, Jr.  
Walter Sharp  
Jake Hufft  
Glenn Alspaugh

James Davidson  
Dudley Durham  
John Russell Hickerson  
Collins Hufft  
Robert Johnson  
George Koch  
Bob Bowles  
George Wilson  
Bob Crowe

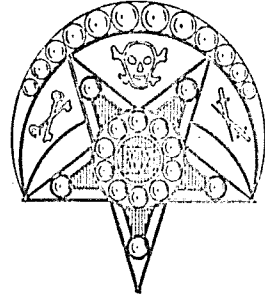
### OFFICERS:

President  
Vice-President  
Secretary  
Corresponding Sec.  
Treasurer

Collins Hufft  
Bob Johnson  
George Kock  
James Davidson  
Marcus Milam



# KAPPA SIGMA



The first chapter of Kappa Sigma was formed by "five friends and brothers" in 1869, at the University of Virginia. The national fraternity traces its original founding to a European background in the city of Bologna in 1400.

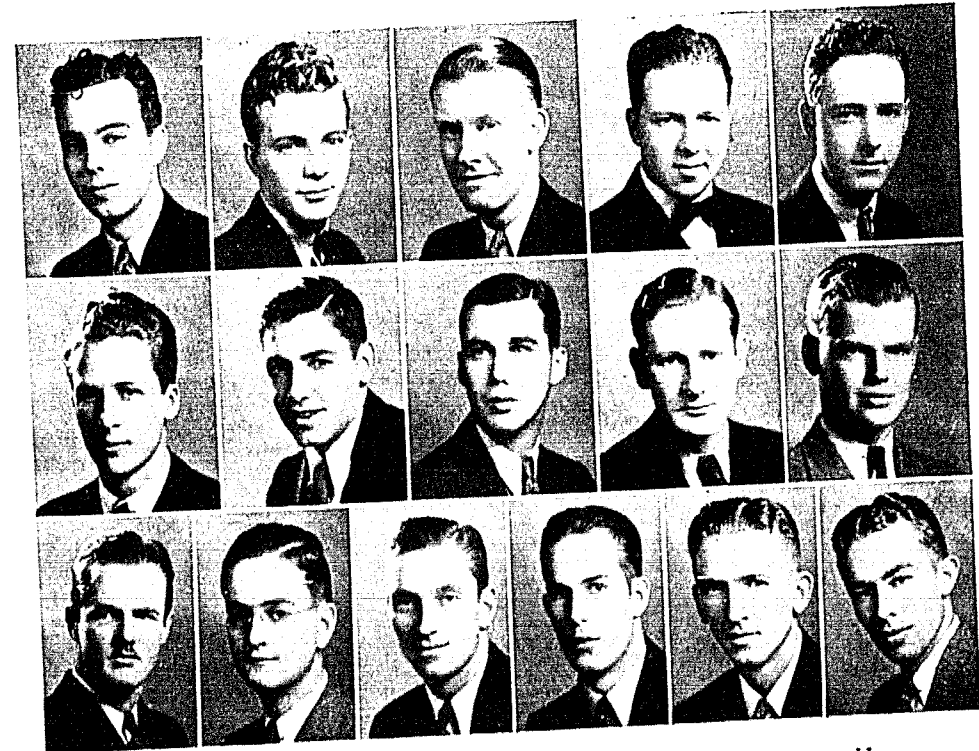
The Alpha Omega chapter of Kappa Sigma is the last National chapter to be organized on the campus, founded here in 1897. Since that time, 377 men have heard the fraternity ritual and pledged their loyalty to the patriotic and pioneer spirit of the National organization through the portals of Alpha Omega.

The executive offices govern 107 chapters in the United States and one in Canada.

Mrs. Frank Vanlandingham for the past nine years has been the gracious housemother of Alpha Omega.



# KAPPA SIGMA



BRANT, E. McDONALD ROBERTSON	BRANT, R. MORALES SETTLE	CLIFTON PARKER SUTHERLAND	DUNCAN REYNOLDS TAYLOR THOMPSON	HARRIS RICHARDS WHITE
------------------------------------	--------------------------------	---------------------------------	--	-----------------------------

### PLEDGES:

Robert Harris  
Howard Jones  
Jack Riggs  
Harold Taylor

Holt  
Marshall  
Maysville  
Slater

James Stuart  
Corbin Buell  
Frank Clifton  
Milton Morales  
Ben Morse

Liberty  
Liberty  
Raytown  
Kansas City  
Excelsior Springs

### ACTIVES:

Melvin Thompson  
Lon M. Sutherland  
William Mann  
Edward McDonald  
George White  
Talton Parker  
Robert DeMasters

Liberty  
Raytown  
Kansas City  
Liberty  
Eagle, Colo.  
Shenandoah, Iowa  
Liberty

Gilbert Reynolds  
Paul Thompson  
Ralph Brant  
Edward Brant  
Arthur Robertson  
Garner Settle  
Ray DeMasters

Maysville  
Liberty  
Liberty  
Liberty  
Odessa  
Richmond  
Liberty

### OFFICERS

President  
Vice President  
Master of Ceremonies  
Secretary  
Treasurer  
Guards

Melvin Thompson  
Bill Mann  
Talton Parker  
George White  
Lon Sutherland  
Rob't DeMasters, Ed. Mc-  
Donald



# PHI GAMMA DELTA

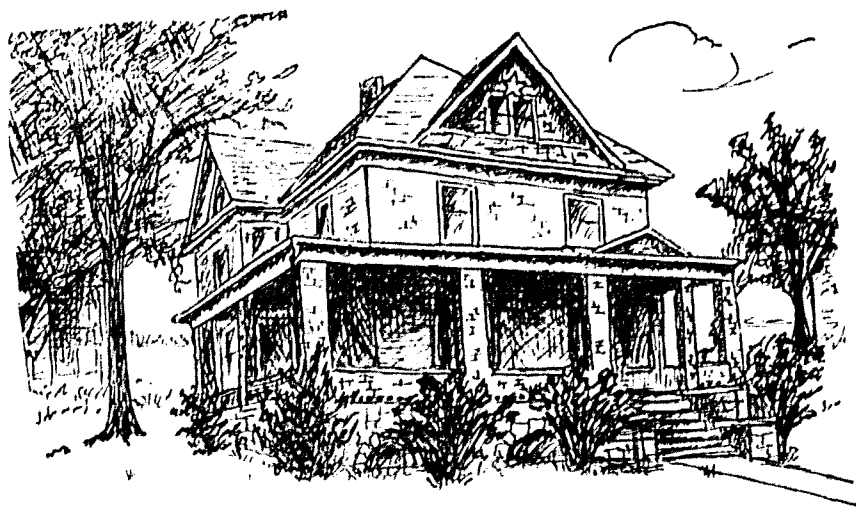


Exactly four months to a day before Col. Alexander Doniphan's masterful oratory inspired the naming of William Jewell College (August 22, 1848) a group of students had met in the room of John Templeton McCarty, a young law student in Jefferson College at Cannonsburg, Pennsylvania. Out of this meeting came the fraternity of Phi Gamma Delta.

Later, in 1871, the Zeta Phi Fraternity, a local organization and Jewell's first fraternity, was founded on this campus. This local fraternity became the Zeta Phi Chapter of Phi Gamma Delta in 1886.

During the 49 years of its existence, the Zeta Phi Chapter has initiated 471 men. Fourteen of these have been listed in "Who's Who" along with such other Fijis as the late ex-President Calvin Coolidge, Donald R. Richberg, Governor Alf Landon of Kansas, Governor Herbert Lehman of New York, Newton D. Baker, and the late Charles Steinmetz.

During its history, which is interwoven with that of William Jewell College, Zeta Phi of Phi Gamma Delta has consistently had members in all the various activities on the "hill", and has counted among its members some of Jewell's most prominent alumni.



# ZETA PHI CHAPTER



AULL CHARLESWORTH DAVIS  
 BAILEY HOWARD HULL  
 BRAMMER HILTON KINDRED  
 BREWER HALL RATHMANN WATERS  
 BROWN DUNCAN REPPENHAGEN

### ACTIVES

- George Aull
- George Bailey
- Wilson Brown
- Klinzey Davis
- Donald Duncan
- Richard Hilton
- Major Hull
- Charles Kindred
- Edward Modes
- Judson Palmer
- J. Carl Rathmann
- Bill G. Schaefer
- James R. Trabue
- Paul Vinyard
- William Waters

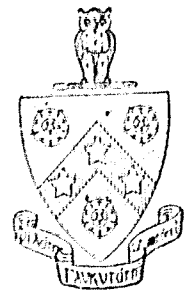
### OFFICERS 1934-35

- President
- Treasurer
- Recording Secretary
- Corresponding Secretary
- Historian

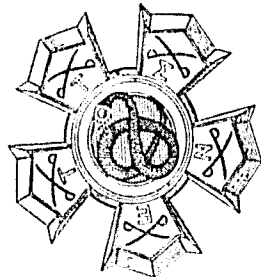
- Wilson G. Brown
- William Waters
- James Trabue
- Bill Schaefer
- Donald Duncan

### PLEDGES

- T. C. Brammer
- Clair Brewer
- J. Firth Charlesworth
- Jack Hall
- Jack House
- John Howard Reppenhagen
- Walter T. J. Shouse
- Robert Turpin
- Raleigh Young



# SIGMA NU



Sigma Nu fraternity was founded at Virginia Military Institute, January 1, 1869. Beta Xi chapter was established in 1894 and soon thereafter possessed the first fraternity house in Liberty, the historic old brick mansion on North Water Street.

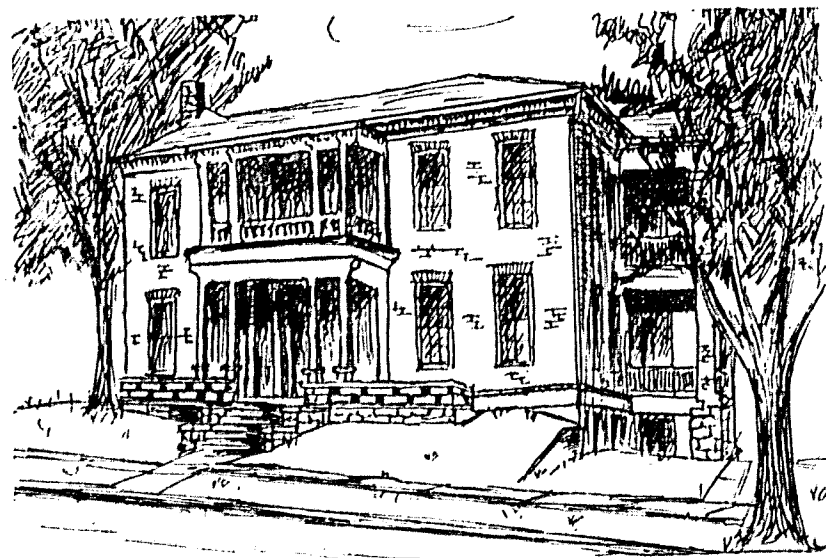
The fraternity has 96 chapters located in the principal colleges and universities of the United States. Among the alumni are Zane Grey, novelist, Charles "Chick" Sale, comedian, the governors of the states of Washington and Georgia, ex-senator Roscoe Patterson of Missouri, Hubert Eaton, Jewell graduate and sponsor of Forest Lawn Memorial Park in Glendale, California. Mr. Eaton is also the possessor of the largest collection of Italian statuary in America and was recently decorated by the Italian Crown.

The fraternity colors are Black, White, and Gold. The flower is the white rose and the official song is "The White Star of Sigma Nu".

Sigma Nu began as a Southern fraternity but with establishment of chapters at Missouri University and William Jewell in the last two decades of the past century, the sectional rut was overcome and the organization extended from coast to coast.

The fraternity magazine, "The Delta", appears four times a year and was one of the first fraternity magazines in existence.

Of forty-seven Jewell men in "Who's Who in America", eleven are Sigma Nus.



# BETA XI CHAPTER



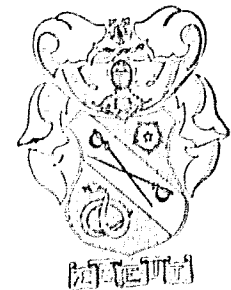
BARRET LYON	BROWNING MURPHY	BRUENING PROCTOR	COPE TROTTER, H.	JETER TROTTER, J.
----------------	--------------------	---------------------	---------------------	----------------------

### THE ACTIVES:

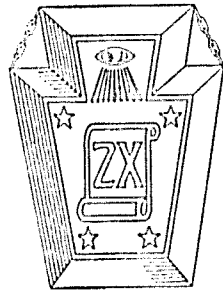
Kenneth Jeter, Slater  
 Robert Q. Lyon, Richmond  
 Harry L. Trotter, Carrollton  
 Joe Trotter, Carrollton  
 William H. Browning, Olathe, Kans.  
 Emmett Murphy, Laredo  
 L. M. Proctor, Independence  
 James Cope, Lexington  
 Joe Bruening, Liberty  
 Jack Reed, Liberty

### OFFICERS:

President	William Browning
Vice-president	Kenneth Jeter
Secretary	Jim Cope
Treasurer	Harry Trotter



# ZETA CHI



Zeta Chi celebrated its eighteenth anniversary on April 20th. It was on this day in 1917 that Zeta Chi was formally recognized by the college as a chartered fraternity.

Zeta Chi for two years existed *sub rosa*, its meetings being held in New Ely on Third West. It was on this corridor that Zeta Chi was conceived, using fellowship fraternalism, and higher ideals to convert them into a secret society.

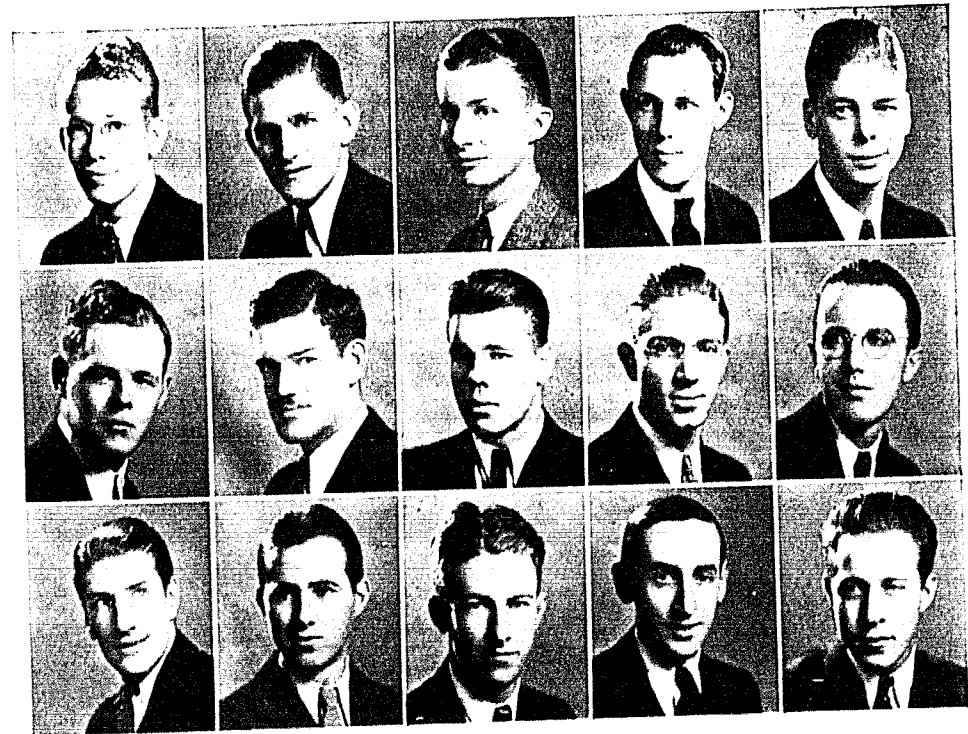
Their charter granted them in 1917, they moved to their first chapter house, 402 Mississippi. In 1920 they moved to their present home, 225 N. Lightburne.

Having ideals and traditions strictly William Jewell in nature, they have found deep satisfaction in living in traditions that had their origin on this campus.

In its eighteen years of existence, Zeta Chi has initiated 247 men, who have at their head, the alumni organization with headquarters in Kansas City.



# JEWELL'S LOCAL FRATERNITY



ALLEN	BECK, B.	BECK, L.	BESSMER	CARPENTER
COEN	CUMPTON	FARRIS	GAINES	JARVIS
LEE	MANSFIELD	MORROW	REALING	SMITH

**ACTIVES:**

Cyrus Allen  
Robert Bessmer  
Burton D. Beck  
Leon Beck  
Ralph Cumpton  
Chester Coen  
Ralph Ballew

Rothville  
Independence  
Milwaukee, Wis.  
Norborne  
Liberty  
Jamesport  
Liberty

William Carpenter  
Carl Gaines  
Leslie Jarvis  
Howard Lee  
Herbert Realing  
C. Lowell Smith  
Bernard Blain

Rothville  
Richmond  
St. Louis  
Detroit, Mich.  
Macon  
Liberty  
Liberty

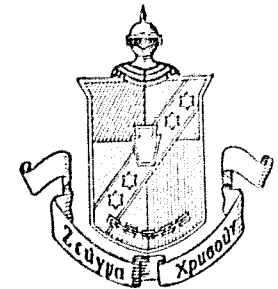
**PLEDGES:**

Ralph Farris Junction City, Kans.  
Wayne Riley Junction City, Kans.

Jorge Hix Grand Junction, Colo.  
Joe Morrow, Jr. Liberty

**OFFICERS:**

President	Burton D. Beck
Vice President	C. Lowell Smith
Secretary	Howard Lee
Treasurer	Leslie Jarvis
Seargant-at-Arms	Ralph Cumpton



# INTERFRATERNITY COUNCIL

Since 1924 the Interfraternity council has been an organization to promote good will and cooperative relations among the five fraternities. The council is composed of two members from each chapter who guide and direct the policies of the five fraternities. The members: Burton D. Beck, Zeta Chi; Wilson Brown, Phi Gamma Delta; William Browning, Sigma Nu; Chester Coen, Zeta Chi; Collins Hufft, Kappa Alpha; Bob Johnson, Kappa Alpha; Lon Sutherland, Kappa Sigma; Melvin Thompson, Kappa Sigma; James Trabue, Phi Gamma Delta; and Harry Trotter, Sigma Nu.

### THE OFFICERS:

Collins Hufft  
Lon Sutherland  
Melvin Thompson

President  
Vice President  
Sec. and Treas.

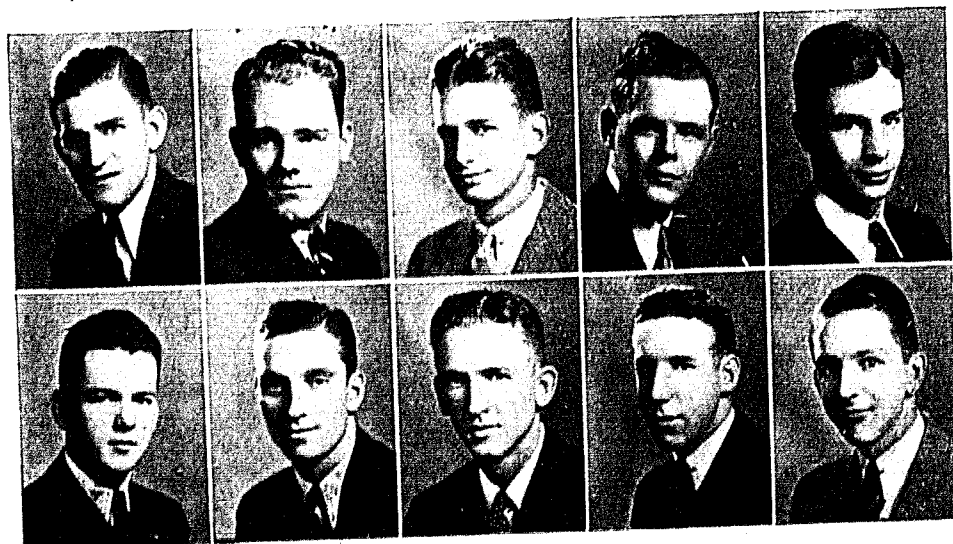
BECK  
JOHNSON

BROWN  
SUTHERLAND

BROWNING  
THOMPSON

COEN  
TRABUE

HUFFT  
TROTTER



# PAN-HELLENIC COUNCIL



HALL

HEINLEIN

ROBINSON

SETTLE

SHOUSE

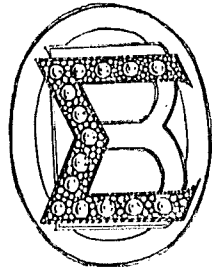
VIKE

The women's Pan-Hellenic Council functions a great deal like it's brother, the Interfraternity Council. It governs and directs those policies which affect the two sororities. The group is composed of three members from each of the two organizations. The members are: Lucille Hall, T. N. T.; Bebe Heinlein, T. N. T.; Vyra Alice Robinson, Beta Sigma Omicron; Pat Settle, Beta Sigma Omicron; Mary Beth Shouse, T. N. T.; and Bernadine Vike, Beta Sigma Omicron.

### THE OFFICERS:

Lucille Hall      President  
Pat Settle      Vice President  
Vyra Alice Robinson      Secretary  
Mary Beth Shouse      Treasurer

# BETA SIGMA OMICRON



Iota Pi was the first name of Beta Sigma Omicron. The sorority had its origin April 5, 1919, but was not given faculty approval until a year later.

Existing twelve years as a local sorority, it became national under the name of Alpha Psi of Beta Sigma Omicron in 1932. Beta Sigma Omicron was founded at the University of Missouri in 1886.

The aim of the sorority is to develop their pledges socially and scholastically. The colors are ruby and pink. The flowers are Killarney and Richmond roses. An honor and distinction achieved was the winning of the annual *Tatler* Revue cup.

Beta Sigma Omicron gave four formal parties during the year, and their annual Black and White party. Several teas, picnics, and dorm parties were also given.

## THE OFFICERS:

President	Vyra Alice Robinson
Vice President	Thelma Lou Offutt
Secretary	Bernadine Vike
Treasurer	Dorothy Wickstrom
Warden	Pat Settle
Sponsor	Mrs. P. Caspar Harvey



# ALPHA PSI CHAPTER



BURCH	ENDICOTT	MARSHALL	McGONIGLE	OFFUTT
PARKER	ROBINSON	SETTLE	SMITH	SWEANY
	VIKE	WICKSTROM	WILCOX	WYATT

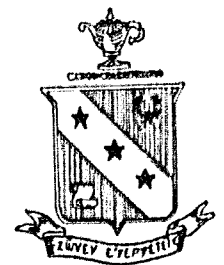
## THE ACTIVES:

Mary Belle Burch  
 Marjorie Marshall  
 Betty McGonigle  
 Thelma Lou Offutt  
 Betty Parker  
 Bernadine Vike

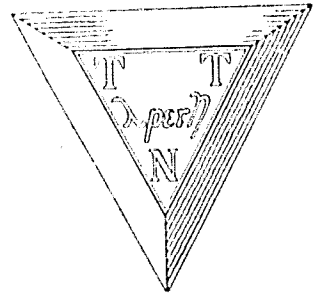
Vyra Alice Robinson  
 Pat Settle  
 Mildred Smith  
 Ellen Sweany  
 Dorothy Wickstrom  
 Helen Wilcox

## PLEDGES:

Marjorie Marshall  
 Barbara Bogard  
 Dorothy Endicott  
 Delma Wyatt  
 Helen Jewell Cederburg



# T. N. T.



T. N. T. is a sorority by right of achievement but not in Greek name. Organized in 1922 by seven Jewell women, T. N. T. possesses an early tradition which had its foundation as a medium between William Jewell and Liberty High School, as records show.

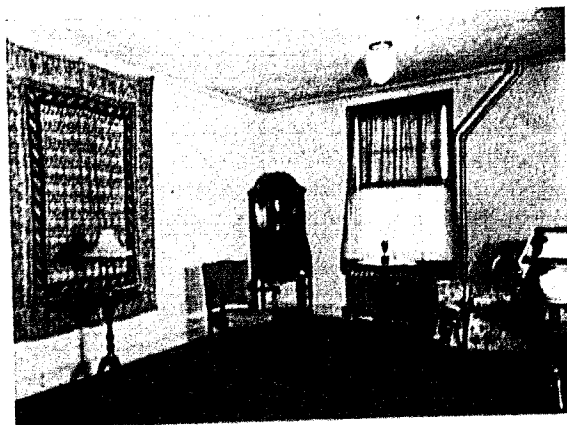
Originally T. N. T. was a club, but by its growing prestige and strength, it achieved the distinction of becoming a sorority.

With gracious finesse, T. N. T. has given four formal parties this year, numerous teas, dorm parties, and the annual Mother's Day luncheon.

The flower of T. N. T. is violet. Its colors are lavender and purple. Enjoying a successful rush season at the opening of school, fifteen girls pledged allegiance to the sorority.

## THE OFFICERS:

President	Lucille Hall
Vice President	Mary Beth Shouse
Secretary	Bebe Heinlein
Treasurer	Inez Yates
Warden	Ruth Cox
Historian	Eleanor Davis
Sponsor	Mrs. J. E. Davis



# JEWELL'S LOCAL SORORITY

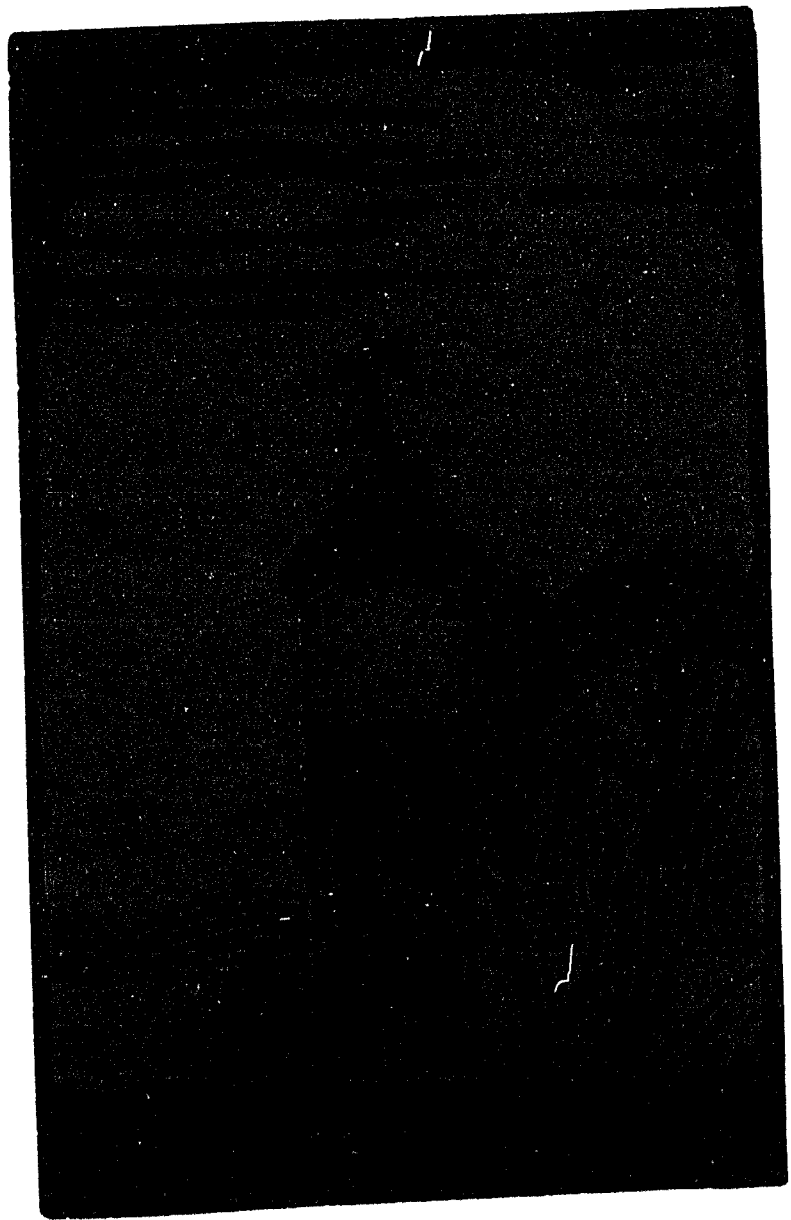


COX FOWLER LOWRY REED	CRAWFORD HALL MCGEE RILEY	DAVIS HEINLEIN MCKISSACK SHOUSE	DURHAM HENDERSON PREWITT WAGY	DUVALL KOCH RAND YATES
--------------------------------	------------------------------------	--	--	---------------------------------

## THE MEMBERS:

Lucille Hall	Sue Fowler	Katherine McKissack	Marjorie DuVall
Mary Beth Shouse	Dorothy Lowry	Ruth Oberdiek	Mary Anna Koch
Bebe Heinlein	Alice Reed	Dorothy Sword	Margaret Rand
Inez Yates	Medora Crawford	Helen Durham	Marjorie Waggy
Ruth Cox	Martha McGee	Martha Henderson	Dorothy Donaldson
Eleanor Davis	Billy Jean Riley	Grace Prewitt	Lois Gene Sheetz

BOOK  
THREE



*The Features*

*Popularity*

*Jewell's Most Popular Girl*



*Lucille Hall*

*Merrill L.  
McDougall*



*Jewell's Most Popular Man*

*B*ack of every man's achievement, the inspiration of every lofty ambition, the incentive to strive and overcome, is a woman.

She charms and allures us. True, she sometimes flirts with us shamefully, and even jilts us, but we are her slaves. We acknowledge our thralldom and would not break the chains that bind us if we could, and proudly we crown and proclaim her Queen.

*Queen*  
*Sue Fowler*





*Queen*  
*Vyra Alice Robinson*

*Queen*  
*Mary Beth Shouse*





Jewell Life

# FRESHMEN INITIATION

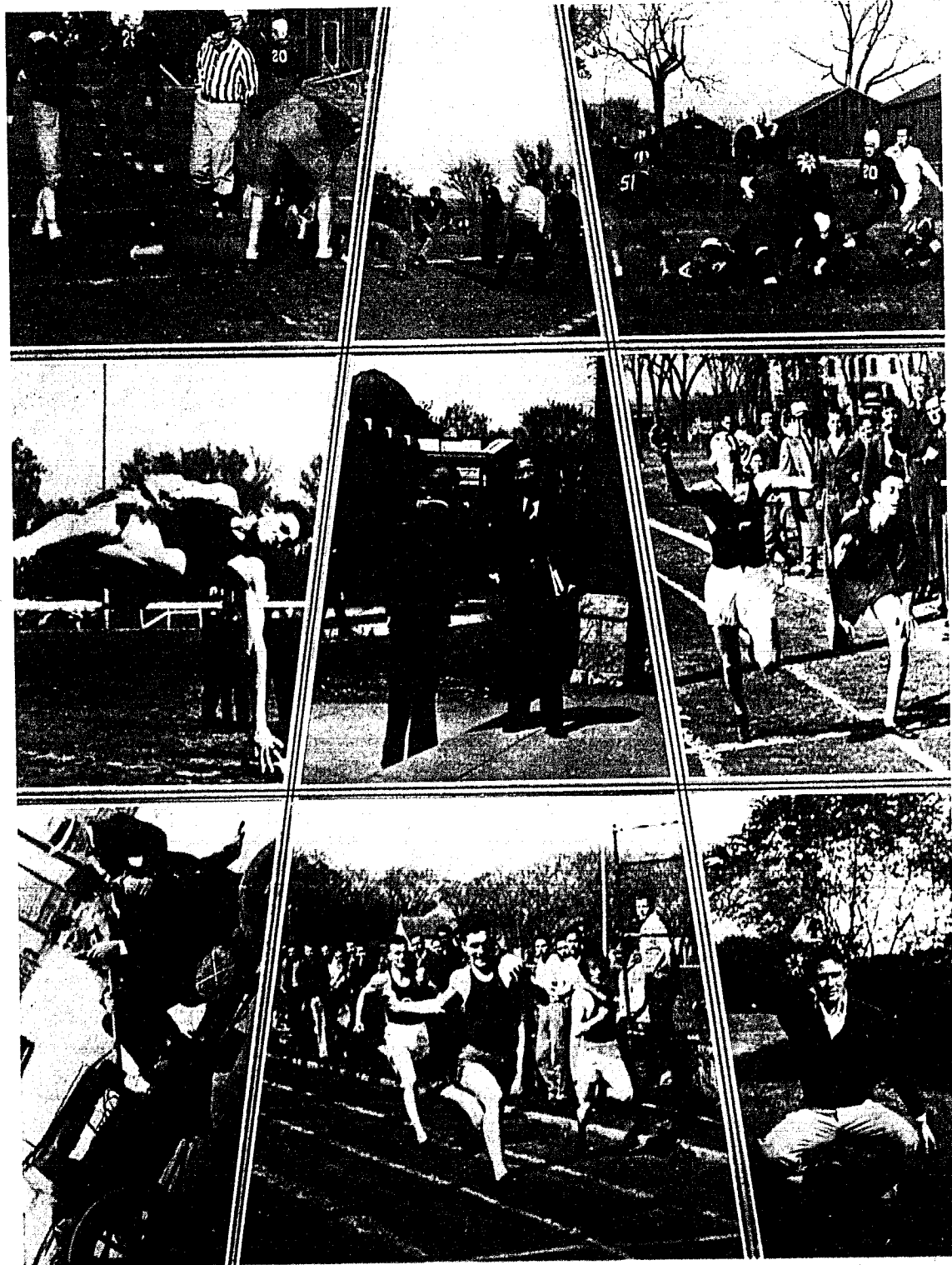


The inimitable Davis  
 Senior sentiment  
 1:15, DX time

Modes emerges purified  
 Valley visits us  
 Freshmen insurrection quelled

Freshmen inspection  
 Buttoning at the half  
 Such popularity must be deserved

# CAMERA CATCHES



Time out  
Morales' form at 6' 2"  
Homecoming parade

Sons of Rest  
A smile from Japan  
Chrane shows his form

Touchdown  
Two mile finish  
The winnah!

# JEWELL WOMEN



Contented co-eds  
Coy co-eds  
Dog daze

First love  
They jelly  
Contemplative co-ed

Lazy co-eds  
Jewell Julietts  
"Queenie"

# RANDOM SHOTS

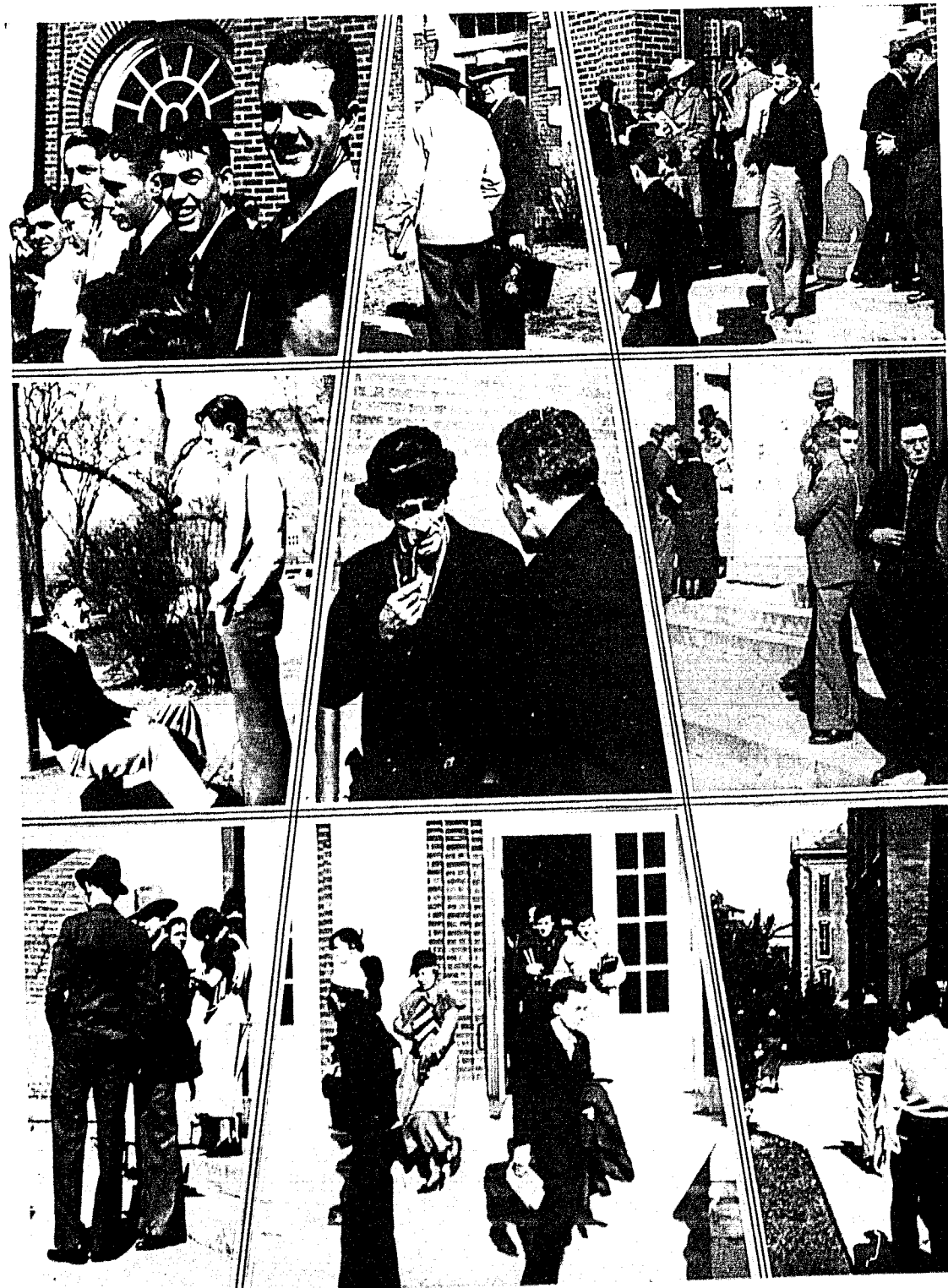


The usual crowd before class  
 Diman explains  
 After chapel

Characteristic  
 Tommy trims the boys  
 Murphy calling hogs

Jelling perfected  
 Last minute comparison  
 Three times a week

# RANDOM SHOTS



Varied expressions  
 The Bus. Mgr. at play  
 Sigma Nu huddle

The Dean and Davidson  
 Words are not adequate  
 After thirty minutes sleep

The 10:30 crowd  
 Before any class  
 After H. & S.

# "J" CLUB INITIATION

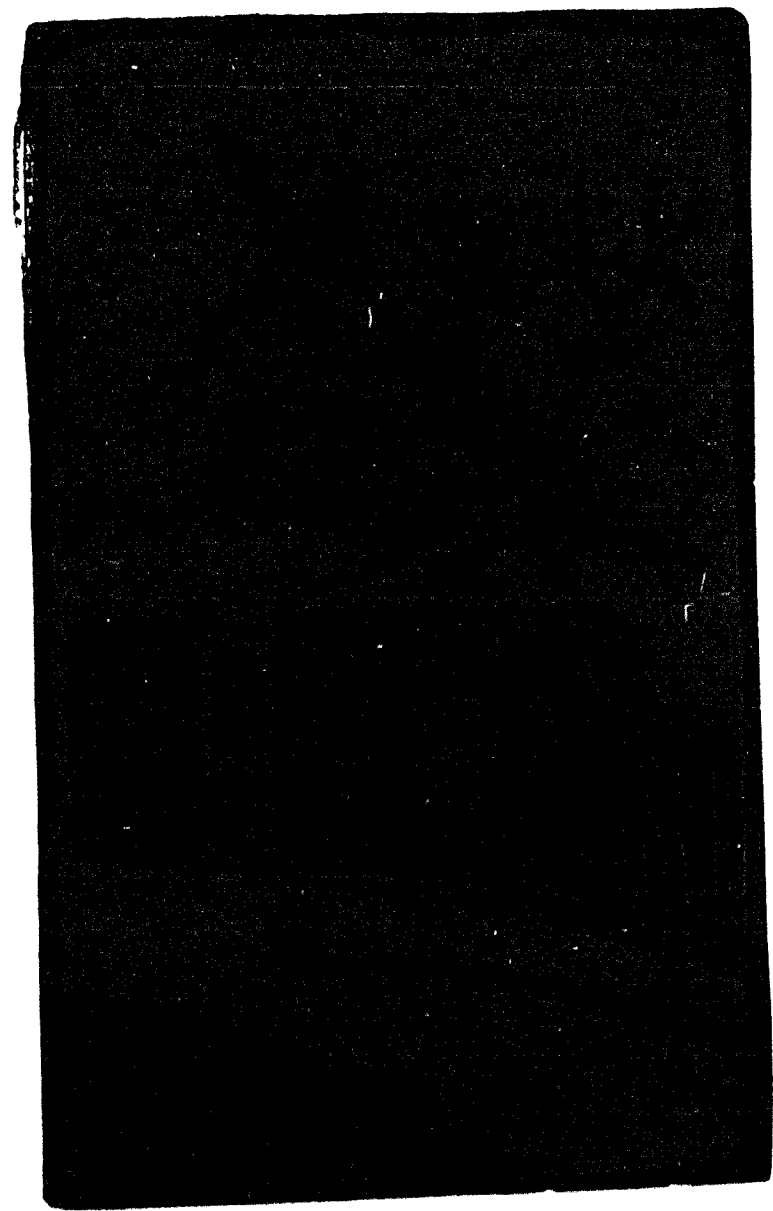


They rest  
They are admired  
Topsy Brant

"Dad" Jr.  
Kid Ciro  
A true Son of Rest

They pose  
Popcye and one of the  
Junction boys  
The chef et al

BOOK  
FOUR



*The Athletics*

# ATHLETICS

ARTHUR ROBERTSON  
Capt. Football

MELVIN THOMPSON  
Capt. Basketball

COLLINS HUFFT  
Capt. Track

R. E. "DAD" BOWLES  
Director of Athletics



Coach "Dad" Bowles succeeds in making men of his athletes because he so successfully shows them the relation between athletic competition and the game of life. He has greatly influenced others in becoming real men and those that come under his leadership receive more than do most athletes as he helps them in building their character so that they will live successfully.

"Dad's" praises have not been sung as have those of other coaches for he is not of the type that seeks the spotlight, but a glance over the records show the work he has done. From the start of his career in 1912 until 1925 "Dad's" teams won twenty-nine championships in major sports and tied for six. The championships won by all the other schools in the association over this period number around twenty-five. In the fall of 1933 he resumed his coaching activities. Last year Jewell won the state singles and doubles in tennis, and this year our football team made an excellent showing. From all appearances the tennis team will repeat last year's performance.

But not only in producing championship teams has "Dad" been efficient. He is a coach of clean methods, sportsmanship, and high ideals on and off the athletic field and he has been a credit to his Alma Mater.

The leadership of our teams during the year has been well handled by the team captains. Bud Robertson could be counted on at all times to share his part of the load and set an example for his team mates both in spirit and play.

In basketball "Tommy" Thompson steadied an unexperienced squad and helped them to better their play.

Collins Hufft, track captain, did not compete this year because of ineligibility.

Edwin Monroe, tennis captain, and a member of last year's championship tennis doubles team, will lead his team mates this year and he has the potential ability to fill the vacancy of Ward Wiley, last year's captain and state singles champion.



BRANT  
HOUSE  
JACKSON  
McDOUGALL

BOWLES  
RAMIREZ

CUMPTON  
ROBERTSON

DAVIS  
SUAREZ

B. DeMASTERS  
SHUTTY

R. DeMASTERS  
THOMPSON

FERRIS  
HUFT  
JETER  
WHEAT

## LETTERMEN

At the close of the season eighteen men had earned their letters for their good work. Through graduation the squad will lose the services of lettermen Captain Bud Robertson, Collins Huft, Kenneth Jeter, Ralph Cumpton, and Melvin Thompson. Shutty, Wheat, Davis, and Ray DeMasters, former "J" winners, will be back next fall to play their last year of football for Jewell.

Men to receive their "J" sweaters for the first time and who will return next year are: Suarez, Ramirez, Bowles, Brant, Riley, Ferris, Jackson, House, Bob DeMasters, and Captain elect McDougall. Mansel Hennon received a manager's sweater, the first to be given by the athletic department.

Jones, Taylor, Moore, Newport, Wilson, Chrane and Howard showed promise this year and will be available for use in the building of the 1935 team.

Jewell's football team enjoyed the most successful season it has had in several years, falling short of the conference championship by three points, thereby placing second. It was not a large squad that reported early in the fall, but those who did stayed out the entire season.

The first month of practice produced improvement in the team's machinery as "Dad" gradually moulded his team into shape.

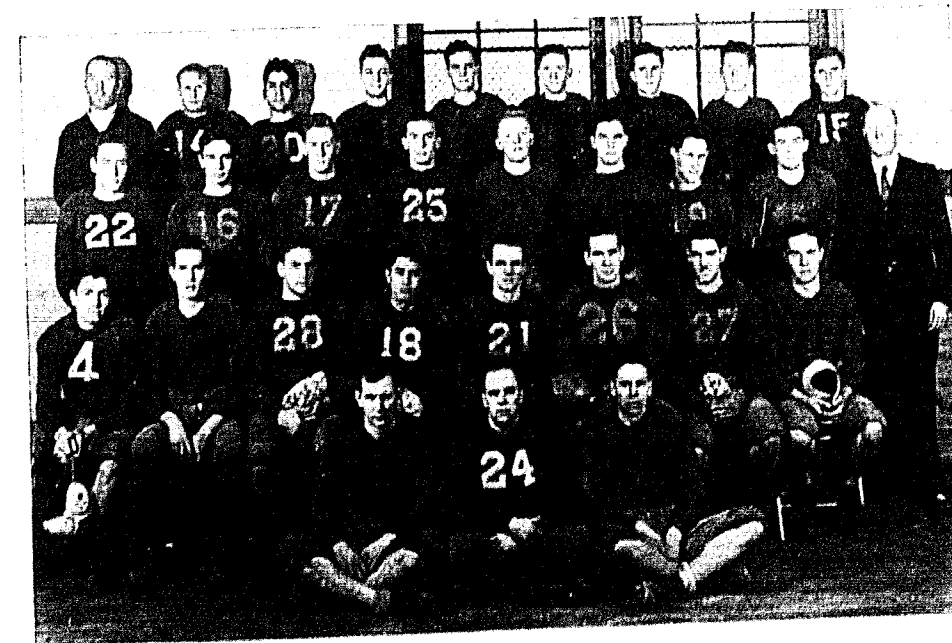
The untimely death of Assistant Grant caused the boys to fight harder, "to win one for Polly", who had carried the Big Red Team through many battles and had returned to assist "Dad" in making a championship team.

The team won consistently and prior to the championship game with Central, they had won four consecutive games and had tied one.

### The Season's Results

Jewell 6  
Jewell 13  
Jewell 7  
Jewell 6  
Jewell 18  
Jewell 13  
Jewell 6  
Jewell 0

Ottawa 6  
Culver-Stockton 6  
Missouri Valley 6  
Tarkio 0  
Baker 14  
Central 16  
Warrensburg 26  
Rockhurst 6



Jordan, Shutty, Ramirez, Brant, Moore, Thompson, Geyer, Wilson, House, Wheat, Huft, Bowles, DeMasters, Newport, Chrane, Jackson, DeMasters, Bowles, Morales, Taylor, Jeter, Suarez, Robertson, McDougall, Cumpton, Jones, Howard, Davis, Hammond



BOWLES  
MORALES

BRANT  
NEWPORT

CARPENTER  
SUTHERLAND

HALE

MARQUETTE  
THOMPSON

## BASKETBALL

A glance at William Jewell's won and lost column of games played during the 1934-35 season tends to be very depressing. A deeper consideration will give one satisfaction for the past season and encouragement that the future William Jewell basketball teams will be more successful. With the exception of two games the scores were close and Jewell was often ahead up until the last few minutes of play, but the inexperience of our players and highly developed efficiency of our opponents, many of whom were composed of players who had played together for the past three years, hindered a more successful season.

Early aspirants for the basketball team included six lettermen and an abundance of new material. "Dad" set about the task of selecting the players that would work together. Jewell scored a victory over the strong Ottawa team and got off to a good start but things did not work out as well as had been hoped. "Dad" used his new men most of the time desiring to develop material for next year recognizing the potentialities of the new material.

The past season was not dull because of the failure of the Cardinals to win. Indeed, the excitement ran high, due to many hard fought games and the periodical exhibition of a fine brand of basketball by the team. Spectators witnessed one of the most thrilling contests that has ever been played on a Jewell court when the Cards downed Missouri Valley in two overtime periods.

The squad was composed of a few veterans and a great number of new men. Captain Melvin Thompson, Lon Sutherland, and W. R. Marquette were the only lettermen of previous seasons who played enough to receive letters for their efforts this season. Captain Thompson, a forward, and Lon Sutherland, guard, represented Jewell for the last time this year.

Page One Hundred and Twelve

Six new men received letters for their fine work during the season which indicates that Jewell will be successful in the future. Bill Carpenter, although a sophomore, was considered as a first year man as he could not report for basketball his freshman year. Bill played guard. John Newport, guard, George Hale, center, and forwards Bud Brant, Bob Bowles, and Milton Morales were the freshmen who received basketball awards in 1935. Hale, Brant, Bowles, and Captain Thompson received honorable mention in the newspaper All-Star selections. Geyer, Sharp, Hall, Evans, and House completed the William Jewell basketball squad for this season and have all shown promise that they will aid in building future William Jewell teams.

We have to accept the past season because it is gone never to return, but the future of our basketball teams appears to be very bright with seven lettermen returning next season and other good basketball players in school.

### Season Results

	W. J. C.	OPP.		W. J. C.	OPP.
Ottawa at Liberty	26	22	Missouri Valley at Liberty	28	24
Rockhurst at Kansas City	25	31	Rockhurst at Liberty	14	37
Central at Liberty	27	29	Missouri Valley at Marshall	23	19
Westminster at Liberty	21	38	Central at Fayette	32	37
Warrensburg at Warrensburg	21	40	Westminster at Fulton	13	22
Tarkio at Tarkio	35	21	Warrensburg at Liberty	32	48
Rolla at Liberty	25	27	Culver-Stockton at Liberty	28	37
Tarkio at Liberty	31	36	Ottawa at Ottawa	31	37
Drury at Liberty	23	19			

HALE  
MARQUETTE

NEWPORT  
HALL

SHARP  
BRANT

MORALES  
THOMPSON

GEYER  
SUTHERLAND

CARPENTER  
HOUSE

BOWLES



Page One Hundred and Thirteen

## TRACK

Because of the loss of several lettermen, and an insufficient number to report at the first of the season, Jewell's track team took its first defeat at Ottawa 99-32.

The dashes, distance, broad jump, and high jump were the events in which Jewell was the strongest. Frank Chrane and Walter Wilson were the dash men for the season. James Smith, miler and two miler was steady and consistent in his running. In Weights, Jackson and Howard; Discus and Javelin, Bowles; Distance, Smith, Brewer, Rosser, and Whistler; Dashes, Stirk; Hurdles, Dunlop, Solomon, were the men who participated regularly in the meets.

Particularly worthy of note was Frank Chrane's time for the hundred yard dash, 9:8.



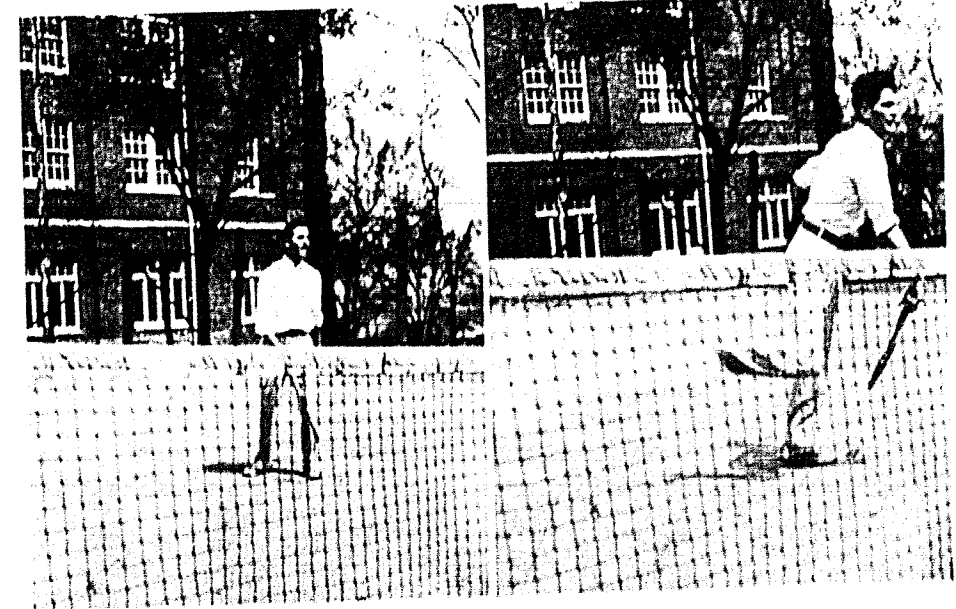
Fell    Bowles    Solomon    Howard    Whistler    Dunlop    Stirk  
Rosser    Smith    Morales    Brewer    Koch    Hunt    Wilson

## TENNIS

Jewell has been more successful in tennis competition than in any other sport in recent years. The team has gone through the past two seasons and the first part of the present season without a defeat in match play. The team will strive this year to retain the doubles and singles championships won by Wiley and Monroe last year. Wiley graduated last June and his three years of play set a standard for future Cardinal players.

The return of two veterans from last year's team, and three new comers, who show promise of developing into excellent players, make the tennis future promising for a championship.

Captain Monroe set an example by his brilliant early season play and is a potential champion. Letterman Keller Bell showed himself in true veteran style and he will make Monroe an able partner in future combats. Fred Renshaw and Mansel Hennon who were ranked in tennis last year but did not take part in match play, composed the second doubles team and played several matches. Bruner, freshman, showed unusual ability and will hold a place in matches next year.



Monroe "kills" one

Hennon Places A Hard One

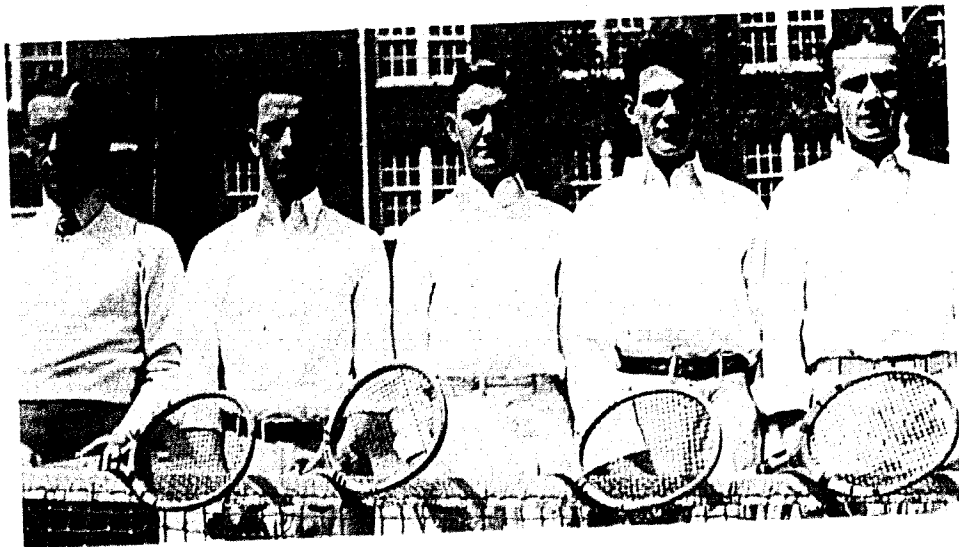
## CHAMPIONSHIP

The only outstanding athletic achievement of last year was the stellar performance of our tennis team. Led by Captain Ward Wiley, Jewell swept through the season undefeated in both match and tournament play. As can be seen from the season results Jewell defeated every opponent in match play in a convincing manner.

The real accomplishment of the year was attained when Wiley won the state singles championship and then teamed with Monroe to win the doubles event thus adding two trophies to Jewell's numerous collection. Wiley and Monroe had little trouble in their opponents in the finals, Missouri Valley, winning in straight sets six-two, six-three. The record of Wiley and Monroe in match play deserves mention as they completed the season without loss in match competition. Wiley's college tennis career is now a thing of the past but Jewell still can claim one of this brilliant duet, Edwin Monroe, Captain of this year's team.

### Last Season Results

Jewell	5	Ottawa	2
Jewell	7	Tarkio	0
Jewell	4	Mo. Valley	2
Jewell	4	Wentworth	3
Jewell	4	Central	3



BELL

Capt. MONROE

BRUNER

HENNON

RENSHAW

*Page One Hundred and Sixteen*

Advertising

*Page One Hundred and Seventeen*

# THE WHEEL

## WILLIAM JEWELL COLLEGE

The sun never sets on William Jewell men and women. Lines drawn from the "Old Hill" to its Alumni around the world would make a great wheel with thousands of spokes. These radial lines would find supreme court judges, congressmen and other statesmen, college presidents, university deans, capitalists, engineers, professors, novelists, journalists, poets, missionaries, ministers, radio stars, and thousands of others in all walks of life. The rim of the wheel is held snugly and loyally in position by lines of memory, communication, feeling, and gratitude for the Alma Mater whose influence has been largely responsible for their success.

---

The secret of that success lies in the institution—a college that gives its students sound philosophy and culture along with facts of knowledge.

---

*You may go through a large college and go through more college,  
You may go to a small college and more college will go through you.*

**JOHN F. HERGET, President**

*Page One Hundred and Eighteen*

MEMBER UNITED TYPOTHETAE OF AMERICA

### DON'T COME TO US FOR "JOB" PRINTING

We don't do it—can't do it, in fact.  
We are tuned up to something better. But we DO do

### COMMERCIAL PRINTING

~~~~~  
**That's Our Business**  
~~~~~

We have studied printing, just as an artist studies painting or music, a doctor studies medicine, a scientist the science he is interested in. Printing is our life work and we love it for what it can do for us and for others. We have been printing college and high school annuals for the past twelve years. Included on our lists are some of the best colleges and high schools in Missouri.

**The William Jewell Press  
Liberty, Missouri**

ESTABLISHED 1917

*Page One Hundred and Nineteen*

WE HELP YOU PREPARE COPY, SELECT CORRECT TYPE FACES, PAPERS AND COLORS OF INK

MODERN PRINTING—NOT THE MODEL VARIETY SOLD AT "PAUPER PRICES"

**Simrall Clothing Co.**  
Exclusive Men's Store  
WILSON BROS. Shirts and Under-  
wear, Stetson Hats, Curlee Suits

**H. R. Banks Lumber Co.**  
All Kinds of Building Material  
A COMPLETE LINE OF COOK'S  
PAINTS AND BRUSHES  
LIBERTY PHONE 389 MO.

**Liberty Flower Shop**  
PHONE 466 West Side Square

**Whiteway Inn**  
Chat With Fellow 'Studes' Over Our  
Delicious Hamburgers & Coffee  
LIBERTY, MO.

*"The Home of  
Aunt Kate's Sausage"*

**W. B. Schneider  
Meat Company**

*Food Supplies of Quality*

518-520 WALNUT STREET  
KANSAS CITY, MO.

Since 1900

*Page One Hundred and Twenty*

**Church Beauty Shop**  
*Up-to-the minute hairdresse and  
permanent waving our specialties.*  
Telephone 420 Across from Theatre

THE FERNDILL STORE  
Quality Foods  
**PITTS GROCERY CO.**  
Phone 176 Phone 177  
5 N. Water St.

ESTABLISHED 1867 NATIONALIZED 1933  
THE  
NATIONAL COMMERCIAL  
BANK  
LIBERTY MISSOURI

**Thomas A. Peterson**  
*Academic Caps- Gowns- Hoods*  
20th and Baltimore Ave.  
5th Floor Carbonic Bldg.  
Kansas City, Mo.

**LEADERS**  
*Of Today and  
Tomorrow!*

If you are interested in knowing  
more about a theological school that  
stands for thorough scholarship, the  
international outlook at this crucial  
hour in world affairs, and the applica-  
tion of the spirit of Christ to the prob-  
lems of the time, write for catalog:

CROZER THEOLOGICAL SEMINARY  
CHESTER, PENNSYLVANIA  
JAMES H. FRANKLIN, President

Ten nationalities are represented in  
the present student body, and already  
distinguished leaders from America  
and other lands, as well as members  
of the Crozer faculty, are delivering  
addresses on themes of special im-  
portance at this hour.

**Henderson Supply Co.**  
FOR  
COAL--FEED--FLOUR--SALT  
Phone 233

Compliments of  
**The Franklin Tavern**

**A. L. McGinness  
DRUGGIST**

SPALDING BASEBALLS  
JOHNSON'S CANDIES  
A. D. S. SUPPLIES  
REXALL REMEDIES  
ANSCO FILMS  
Phone 58 Liberty, Mo

**VISIT!!**  
*The Middle West's  
Greatest Amusement Center*

**P  
L  
A  
-  
M  
O  
R**

*Dancing--Swimming--Bowling--  
Billiards--Ice Skating--  
Ice Hockey*  
Main at 32nd K. C., Mo.

**The Modern Beauty Shop**  
Liberty, Mo.  
*Permanent Waving a Specialty*  
Opp. Citizen's Bank

**Progressive Shoe Shop**  
ALSO  
666 TAXI  
E. L. Jackson, Prop. Phone 666

*Fred G. Barnby, Mgr. Russell D. Ray, Editor*

**The Liberty Chronicle**  
A paper devoted to the interests  
of Liberty and Clay County  
Phone 603 34 South Main

**W-E-L-C-O-M-E**

*When in Kansas City visit our store,  
Make it your Headquarters--*

*Books Bibles Testaments  
Of All Publishers*

*Cooperation is the key to success,  
We solicit your cooperation--*

**The Judson Press**  
W. J. Smith, Manager

1107 McGee Street Kansas City, Mo.

*Page One Hundred and Twenty-One*

## KANSAS CITY LIFE INSURANCE COMPANY

A permanently dependable institution operated for the benefit of its policy holders first.

### *We Write*

JUVENILE POLICIES from one day to ten years of age.

EDUCATIONAL POLICIES payable in convenient amounts to cover college expenses.

FAMILY PROTECTION POLICIES

OLD AGE ENDOWMENTS


INCOME ENDOWMENTS

ANNUITIES

A policy at every age up to sixty for every purpose.



Home Office--3520 Broadway  
Kansas City, Missouri



# SYSTEMATIZE YOUR SCHOOL DAYS

*A checking Account here tells where your allowance is spent.  
A Savings Account lays the foundation for Business and System in later life.*

First National Bank  
Liberty, Missouri

"Since 1909"

We Have Strived To Serve You in the  
Most Efficient Manner

Sporting Goods--Felt Goods--Jewelry--  
Ice Cream--Pop--Candy

Parker and Conklin Pens and Pencils

## CO-OP BOOK STORE

Fred Renshaw, jr., Mgr.

The Plaza Theatre  
House of Good Shows  
We aim to please.

*Faultless Work at Fair Prices*  
**Spotless Cleaners**  
J. A. O'NEIL, Proprietor  
CLEANING, PRESSING, REPAIRING  
ALL WORK GUARANTEED  
PHONE 570 LIBERTY, MISSOURI

STUDENTS! Your patronage has been appreciated throughout 1934. It is our aim to merit this consideration throughout 1935. You have made us the "Mecca" of Liberty, the center of the political embroglo; headquarters for the hot stove league; rostrum of the grandstand quarterback; rendezvous where Greek may meet Greek; and a place at which anyone may meet everybody!

**BRANT'S**

LIBERTY MARKETING COMPANY  
*Grain, Hay, Flour, Feed and Coal*  
Liberty, Mo. Phone 841

Order of  
*The Knights of Pythias*

Clay Lodge, No. 176  
*In appreciation of your past social functions at the Knights of Pythias Hall*



Page One Hundred and Twenty-Four

A. I. D.  
SOUTHSIDE PHARMACY  
Drugs    Cosmetics    Soda Fountain  
Southside Square Phone 71 Liberty, Mo.

Compliments of  
**SAFEWAY STORES**  
1 East Kansas Phone 309

**JAMES COSTELLO LUMBER CO.**  
Over 50 Years of Quality & Service  
Phone 104 115 South Main St.

STAY AT THE  
**Colonial Hotel**  
When Visiting William Jewell—Tasty Foods  
at Tempting Prices in the—  
COFFEE SHOP  
McCartney    Bartons

**The Eastern Baptist  
Theological Seminary**  
*in the heart of Philadelphia*

CONSERVATIVE IN THEOLOGY  
ACCURATE IN SCHOLARSHIP  
EVANGELISTIC IN SERVICE  
DEVOTIONAL IN SPIRIT

*Courses leading to degrees  
in Theology, Religious Edu-  
cation, and Sacred Music*

For information address:  
President Austen K. de Blois  
1808-1818 South Rittenhouse Square  
Philadelphia, Pa.

**Liberty Grocery**  
*Fresh Meat and Groceries*  
C. B. Gibson, Mgr.

**Electric Shoe Shop**  
Across from P. O. Liberty, Mo.

**Clay County Abstract  
Company**  
MARTIN E. LAWSON, President  
JAMES S. SIMRALL, Vice-President  
ALAN F. WHERRITT, Secretary  
C. H. COPPINGER, Treasurer and Manager

**CITIZENS  
BANK**

**HUGHES-McDONALD  
DRY GOODS CO.**  
*Specialists in Silk Hosiery, Women's  
Coats, and Dresses*

DEE MOSBY, Agent  
General Insurance and  
Surety and Fidelity Bonds  
*Citizens Bank Bldg. Liberty, Mo.*

*Ladies and Children  
Apparel and Millinery*  
**TOGRY SHOP**  
N. CHRISMAN

*Quality is the best Policy*



*Served by all quality dealers*

**Chrisman Ins. Agcy.**  
206 Matthews Bldg.  
PHONE 810

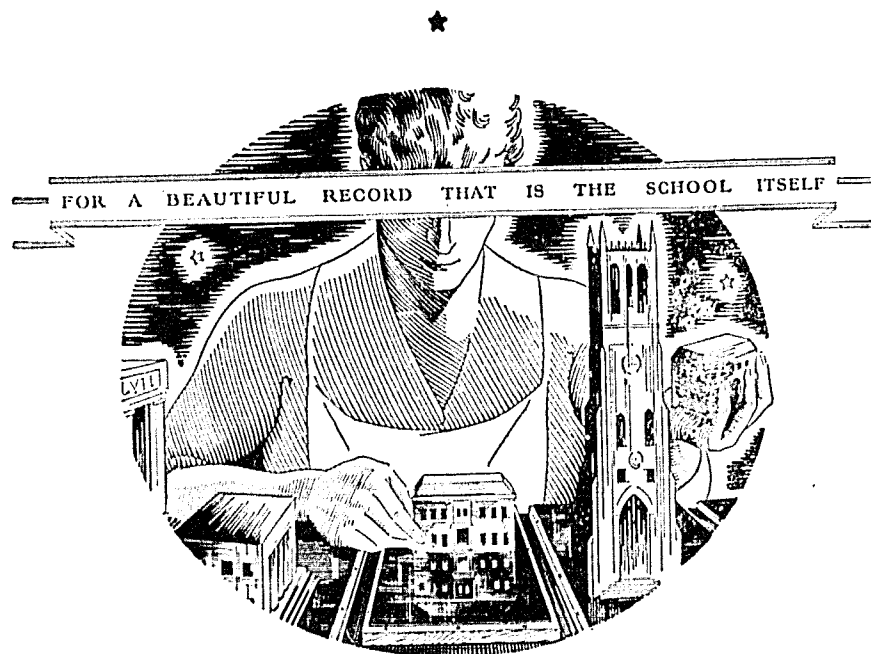
Patronize the Tatler Advertisers

for they have

helped to make the 1935

Tatler a success.

Page One Hundred and Twenty-Five



ARTCRAFTS ENGRAVING CO.

*Designers  
Engravers of Books*

ST. JOSEPH, MO.



*Page One Hundred and Twenty-Six*

PHOTOGRAPHS

FRAMES

*Thulane*

*Photographs of class and distinction  
at very moderate  
prices*

Grand 1440

Lobby: Hotel Baltimore

Kansas City, Mo.

*Page One Hundred and Twenty-Seven*