

THE TATLER

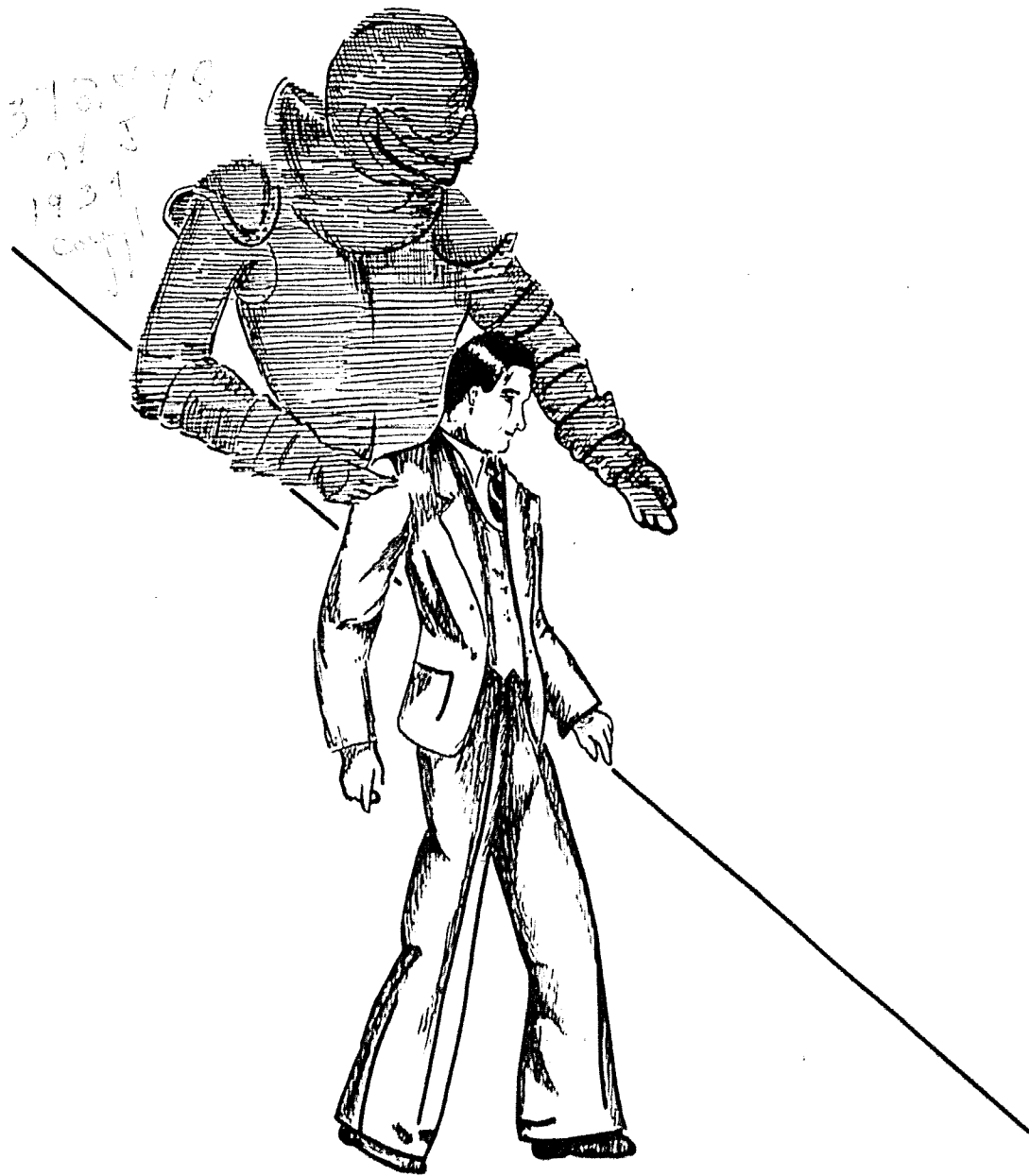
Chivalry Number

1934

VOLUME 30

6/1/34

41828



DEDICATION



DR. J. B. SULLIVAN

To Dr. J. B. Sullivan who through his sincerity has obtained from his fellows the prerequisite of chivalry---respect.

FOREWORD

To blend the shadows of the past with the realities of the present is our desire in presenting chivalry as a design for comparison.

BOOKS

BOOK ONE---Wisemen, Knights
Errant, Knights, Squires, and Pages

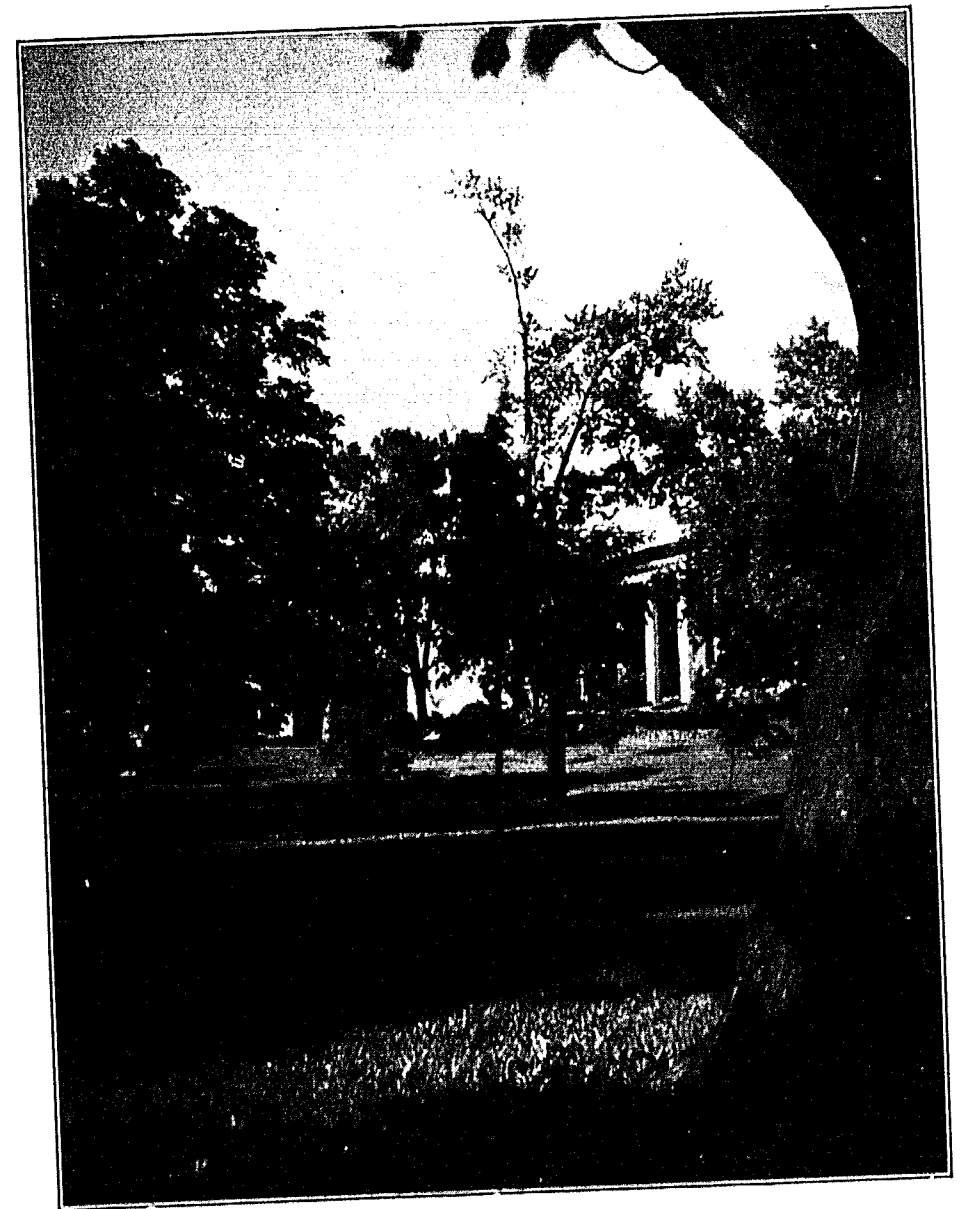
BOOK TWO---Combats

BOOK THREE---Crafts and Gilds

BOOK FOUR---Ladies Fair and
Jesting

THE TATLER

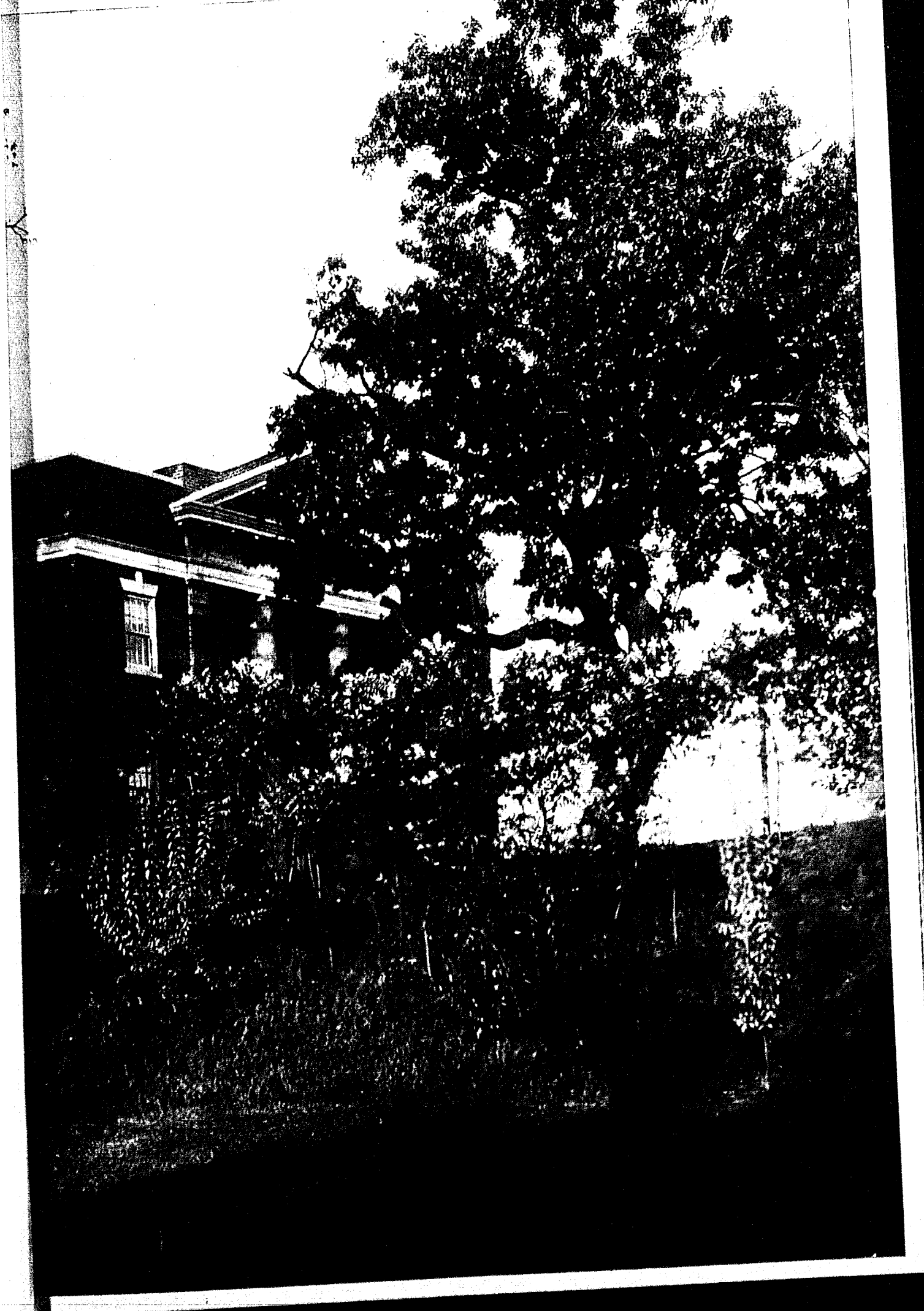
This Year Book of William Jewell College---published by the students May, Nineteen Thirty-four--- is conceived as a pageant of events, a chronicle of the graduating class, a memoire of organizations, and an expression of the college---



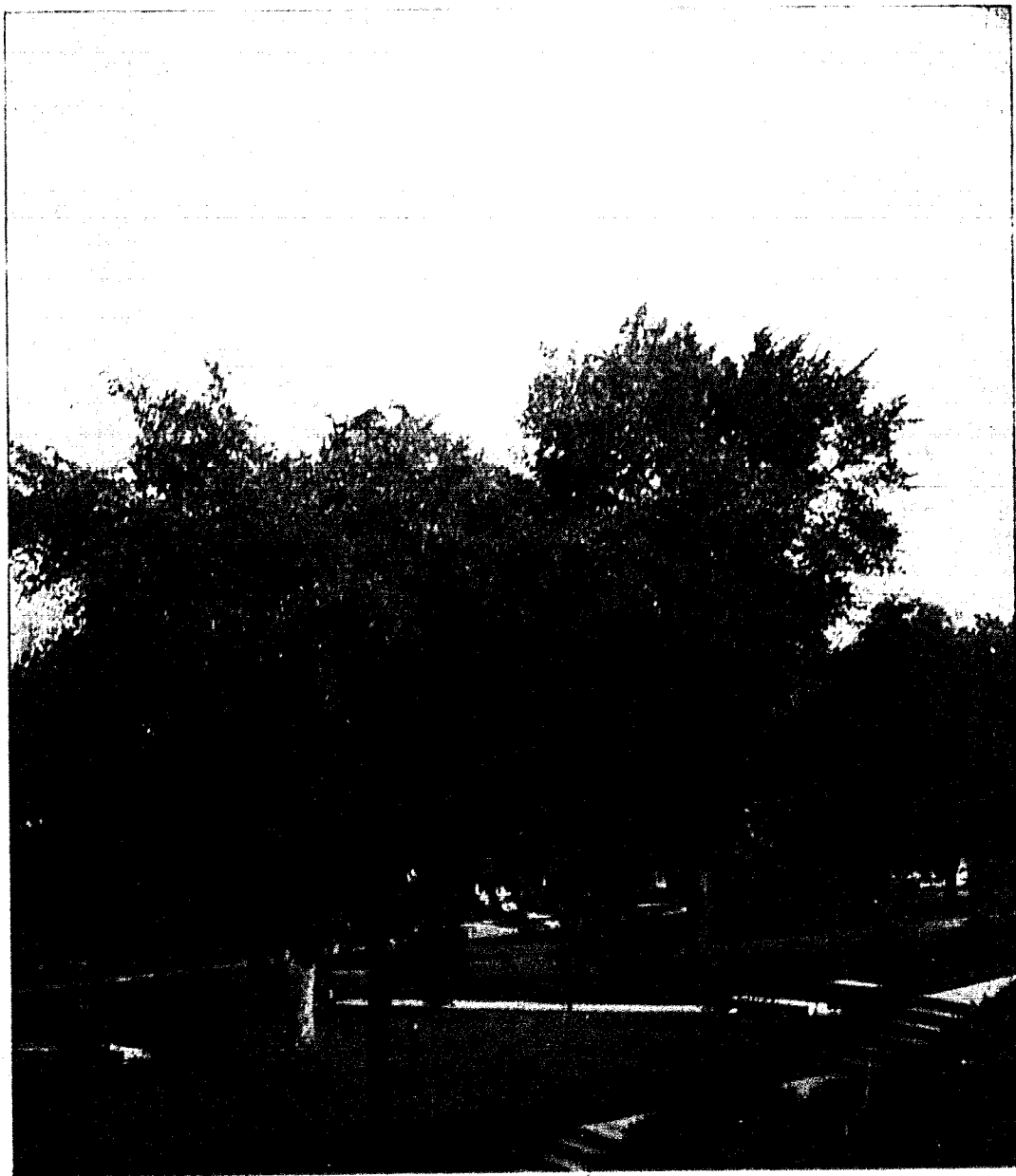
Splendor and Tradition

A Classic

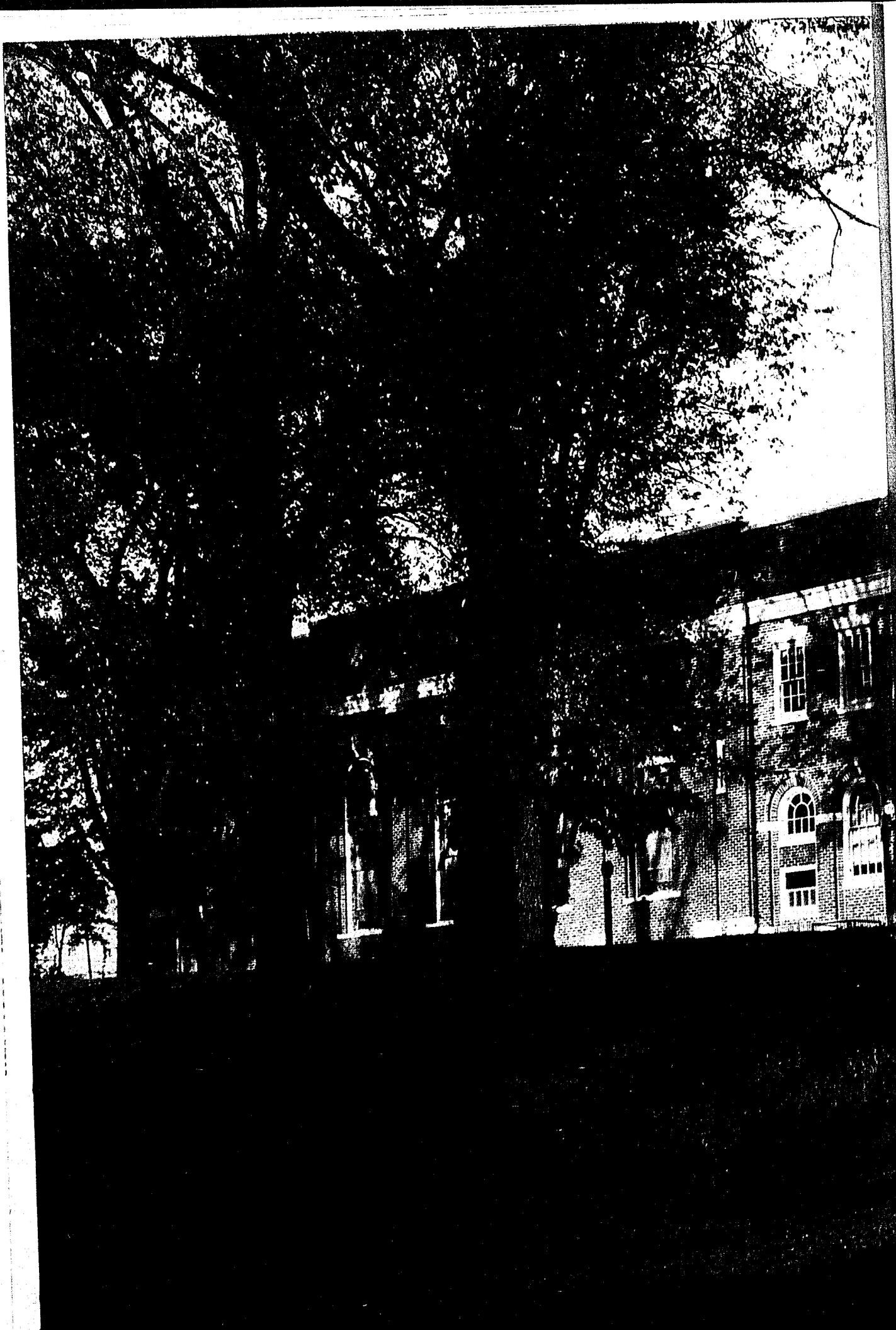
Englamored in Memories



Where Shadows Linger



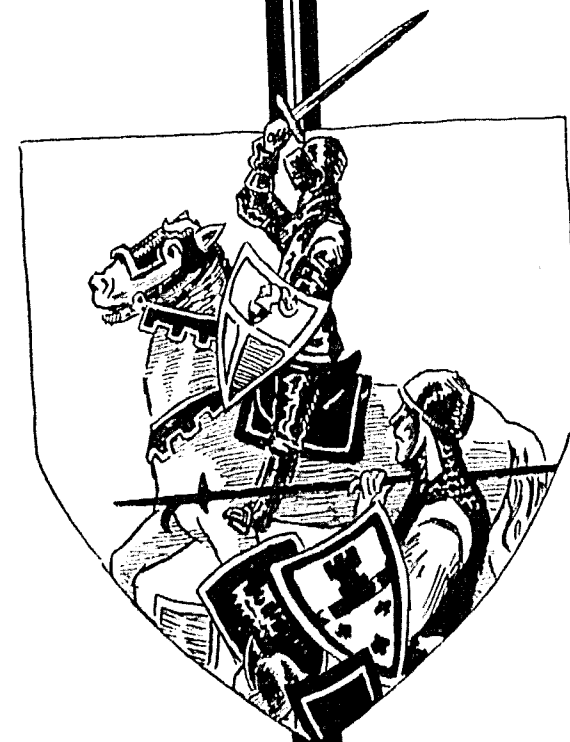
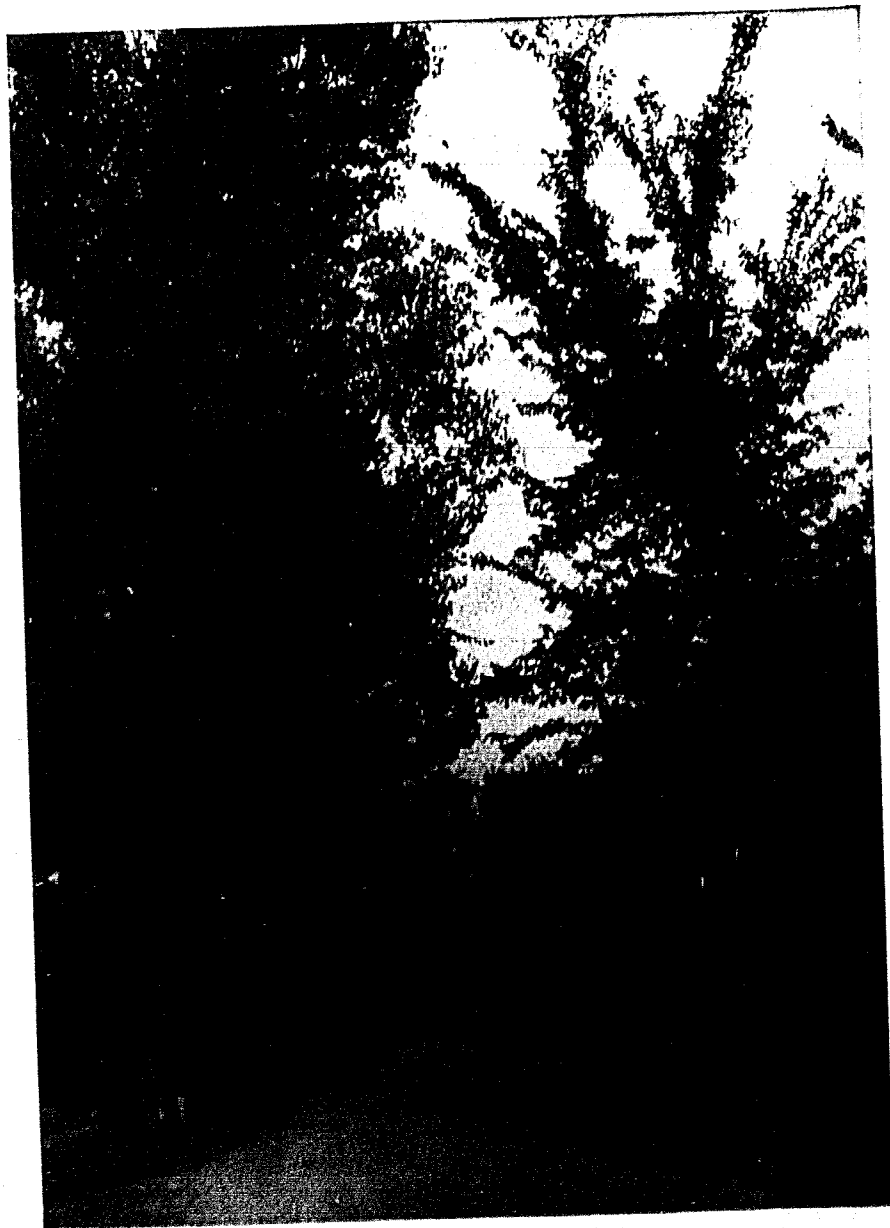
The Quadrangle



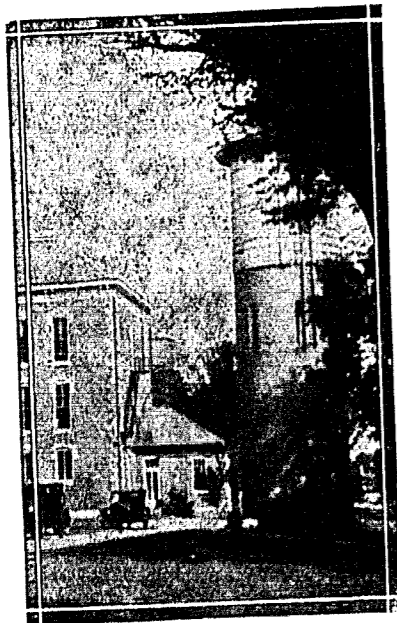
The Portals of Science

Leafy Designs

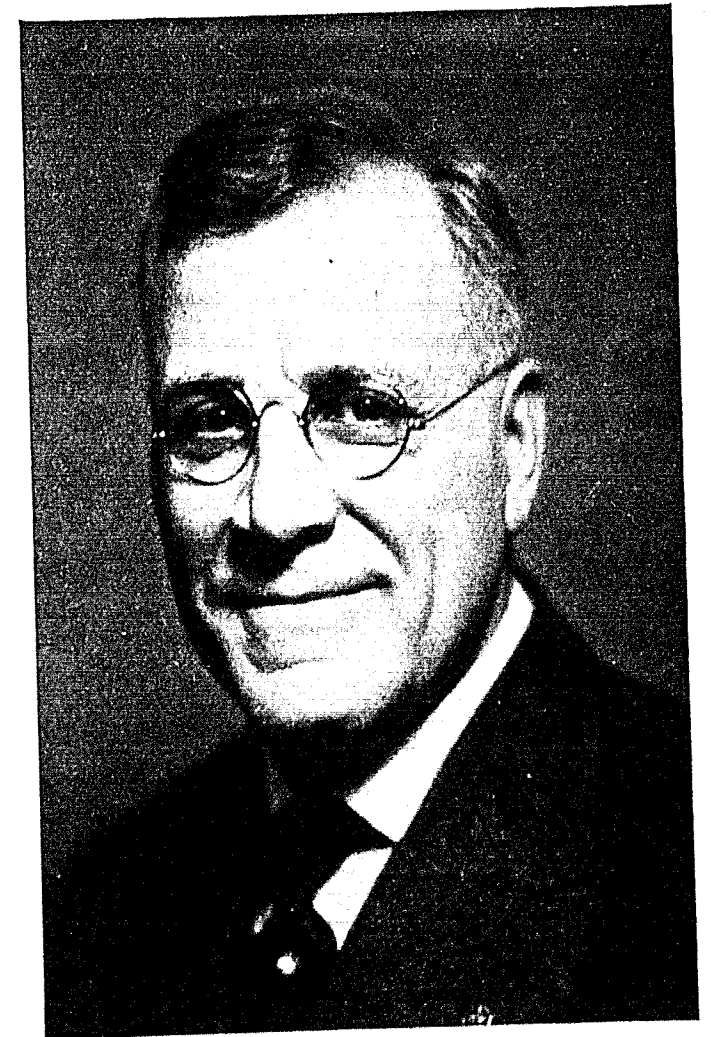
A Nocturne of Trees



Wise Men,
Knights Errant,
Knights, Squires and Pages



Queen
Eleanor Davis



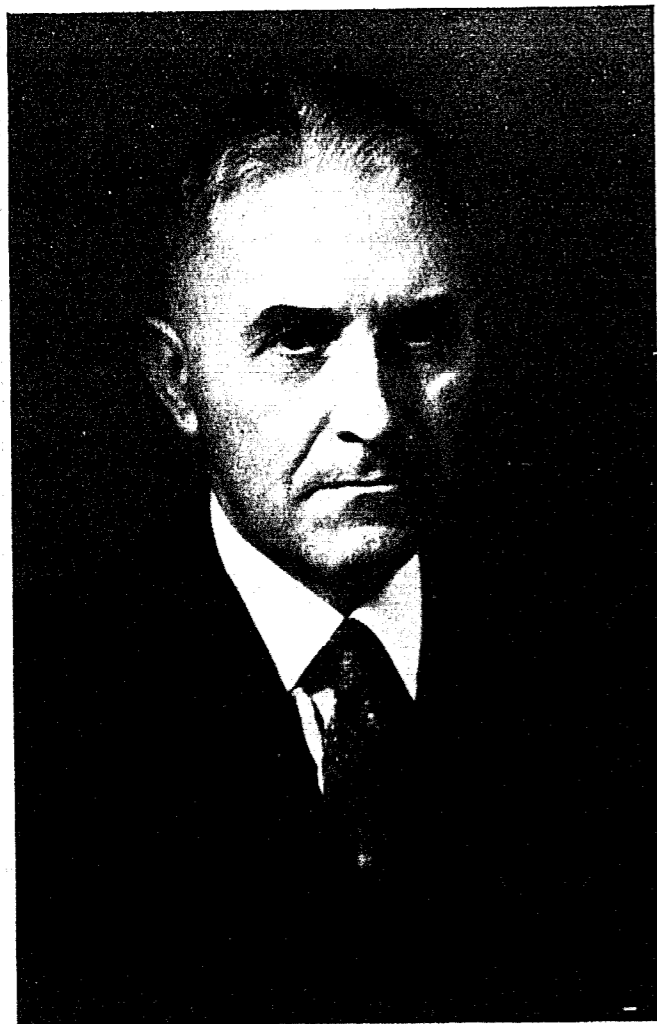
DR. JOHN F. HERGET, A. M., LL. D.
President of the College

Through the ceaseless effort and energy of the President has it been possible that the school keep the standing and position that it has maintained throughout the year. Yet never once has he shown the troubles that were heaped upon his willing shoulders by a lack of enthusiasm or encouragement for others, and through his wisdom he has acted as an able counselor to all who sought his advice. He is a leader with the rare combination of Christian ideals and executive ability.



DR. JOHN F. HERGET, A. M., LL. D.
President of the College

Through the ceaseless effort and energy of the President has it been possible that the school keep the standing and position that it has maintained throughout the year. Yet never once has he shown the troubles that were heaped upon his willing shoulders by a lack of enthusiasm or encouragement for others, and through his wisdom he has acted as an able counselor to all who sought his advice. He is a leader with the rare combination of Christian ideals and executive ability.



ALLEN J. MOON, A.M., LL. D.
Dean of the College

Dr. Moon has an understanding of the problems that arise before a student and his advice is always sound, showing the foresight of one who has reasoned for himself. He is a symbol for those who strive to attain the heights of scholarship with common sense.

Dr. Moon has made the Ancient Languages something alive instead of a course in the "dead" languages. Other than acting as Head of the Department of Ancient Languages he is Registrar of the College and in this capacity is familiar with every student in the College.

The Faculty

Twenty-five professors gave their help to the students and the school this past year. It was through their cooperation that it was possible to complete such a successful year.

Dr. J. C. Armstrong made it possible that the Library should maintain its high standards and through his efforts gained many new volumes and periodicals. "Dad" Bowles taught, directed, and fought for the athletics of the school. It was through his help that the intramural and interclass athletics proved the success that they were. This year Professor A. G. Byrns acted as Secretary of the Faculty, and taught several classes in French, German, and Spanish. Then Professor Clarence G. Chrisman had more than his share of teaching with his many classes in the fundamentals of French and Spanish. Dr. C. J. Elmore guided many students into the mysteries of elementary and advanced Biology. Professor Ewing found time other than his English classes to coach Debate and take a very active interest in the Forensic standing of the school.

In order that the members might take time from their duties and meet with other members of the Faculty, each Tuesday noon the Faculty met at New Ely for lunch. It was here that the problems were discussed and a matter of great importance to the students was also discussed—the holidays.

The members of the faculty not only served in the roles of instructors but were advisors as well. Most of the faculty are members or sponsors of a student group or project. In this way the faculty and student body work as one unit, and also there is more individual interest and attention.



J. C. ARMSTRONG, A. M.
Librarian of the College



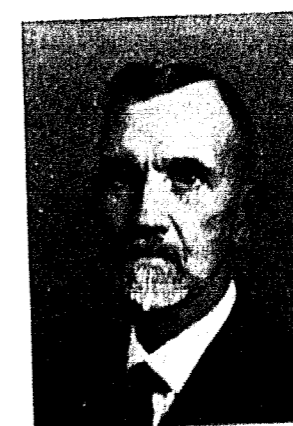
ROBERT E. BOWLES, A. B.
Director of Athletics and
Physical Education



ARTHUR G. BYRNS, A. M.
Head of the Department of
Modern Language



CLARENCE G. CHRISMAN, A. M.
Professor of Spanish and French



CLARENCE J. ELMORE, Ph.D.
Head of the Department of Bi-
ology



W. PREWITT EWING, A. B.
Professor of English



JOHN E. DAVIS, A. B.
Head of the Department of
Physics



FRANK G. EDSON, Ph.D.
Professor of Chemistry

Professor Davis found time from his many business affairs for the College to teach the fundamentals of Physics to classes. Most of his time was occupied with problems and difficulties that would face any business man in the past year, but he has successfully untangled the problems and is still ready with a smile.

Dr. Frank Edson taught several classes in Chemistry, and to him goes the renewed interest in this field of advanced Chemistry.

Dr. Fruit taught the upper-classmen English, Logic and Philosophy. It is needless to say that his classes were the most popular on the "Hill". Even students who had never attended a 7:50 class the first three years of their college life attended "Daddy" Fruit's English class at that early hour.

Professor Harvey as usual taught large Freshman classes the secrets and horrors of English Grammar. In the Spring Term he taught as a special treat to those interested in Literature one of the most interesting courses ever presented on the campus, that of a Browning course. The Journalism classes had practical experience on the local newspapers.

Miss Virginia D. Rice conducted several interesting courses in English this year. Miss Rice also directed all the dramatic productions on the campus this last year, and through her efforts the plays were well received.

Dr. W. C. Smith, who has just completed his first year as the Head of the Sociology Department has carried on well organized work in his department, and through his efforts the students have taken a new interest in the subject.

Mr. Bill Eubanks, who has been connected with the College this past year as the Field Representative, deserves due credit for his enthusiasm with which he has carried on the present campaign. He has had published several books to be distributed and has worked with boundless energy in the quest for new students.



JOHN PHELPS FRUIT, Ph.D.
Head of the Department of
English



PAUL CASPAR HARVEY, A. M.
Professor of English and
Journalism



VIRGINIA D. RICE, A. M.
Professor of English
Director of Dramatics



W. C. SMITH, Ph.D.
Head of the Department of
Sociology

Dr. Hester was responsible for the capable management of the Bible courses and helpful advice to the students. He also found time from his duties as a teacher to serve the Baptist Association.

Professor Isley taught Education to students and trained the student teachers. Through his course it is possible for the students to gain practical knowledge as teachers.

Dr. Holt Smith taught many students History and Political Science this past year. His courses are combinations of practical and applied fundamentals.

Dr. Sullivan has the task of teaching large classes in Psychology and advanced courses in Education. Added to his duties as an instructor he is Dean of the Summer School which requires much of his time.

In addition to his classes in Physics and Mathematics, Professor VanTrump had an interesting course in Astronomy.

Other than his more advanced Chemistry classes Dr. Weida taught elementary Chemistry to large Freshman classes.

Mrs. H. I. Hester was the charming hostess at Melrose Hall and gained the love and respect of the girls, who consider Melrose not just a dormitory but a home.

Mr. and Mrs. Ralph Davidson were "Pop" and "Davy" to the boys who made New Ely their home.

Many of the professors have found it impossible to take personal charge of all their classes. This year they have chosen certain student assistants who have proved capable. This is a successful plan that has been in practice in larger schools for some time.



H. I. HESTER, Th.D.
Head of the Department of
Bible



THURSTON ISLEY, M.Ed.
Professor of Education



W. HOLT SMITH, Ph.D.
Head of the Department of
History and Political Science



J. B. SULLIVAN, Ph.D.
Head of the Department of
Education



JOSEPH VANTRUMP, A. B.
Professor of Physics and
Mathematics



GEORGE F. WEIDA, Ph.D.
Head of the Department of
Chemistry



HELEN M. CHURCHILL, A.B.
Professor of Biology



B. EDWARD DENTON, A.M.
Head of the Mathematics Department



FREDERICK M. DERWACTER, Ph.D.
Professor of Greek



DAVID GROSCH
Head of the Department of Music



ULMA R. PUGH, A.M.
Professor of History and Economics

It is the duty of Miss Helen Churchill to teach elementary Biology and to supervise the pursuit of bugs and flowers for scientific study. Her classes are always large due not only to their importance, but her presentation of such subjects that are most interesting and helpful.

Professor Denton's task is to help more advanced students in Higher Mathematics and their problems are often complicated and technical. He prepares students for more advanced work in their field. The modern equipment that the Science Hall can boast is a help to those interested in the field of research, and with the willing aid of the instructors it is possible for them to carry on many practical experiments.

Professor Derwacter presents the Ancient Languages, Greek and Latin, in such a way that they are popular courses on the campus. It is through his own interest in the subjects that he makes them so easily understood to the average student.

Mr. David Grosch has had an active part in the music of William Jewell for the past years. He has taught Music Appreciation to many students, and through his efforts a Girls' Glee Club was established again on the campus. His activities consist of direction of the Boys' Glee Club and the supervision of the Band.

Professor Pugh taught large classes in History and Economics. His largest class was an early morning Freshman Class and to them he taught the story of mankind from the early days.

The Student Body has been inspired by this faculty of such able men, and through them have they learned more than was just in books. They have learned how to live, and this knowledge is practical for modern times.

In Memoriam



CLOICE R. HOWD, Ph.D.
Died May 18, 1933

"He whom the gods love, dies young"

EVERETT W. JOCHUM

Class of '34

Died February 14, 1934

Seniors



ADAMS, MILLICENT R. *Liberty*
English Latin
Beta Lambda; Y. W. C. A.; Y. W. A.; President
Student Volunteer.



ASH, A. RUSSELL *Cordell, Okla.*
English Latin
Phi Gamma Delta; Sons of Rest; Debate '34;
Manager of Co-op; Tennis '33; President Junior
Class; President Senior Class; Student Senate '33;
'34; Student Staff '34.



BAUMAN, HENRY C. *St. Joseph*
Biology Chemistry
Beta Beta Beta.



BENSON, GEORGE *Liberty*
Education Economics
Scout Legion.



BITTLE, C. E. *St. Louis*
History Sociology
International Relations Club; Ministerial Group;
Student Volunteer.



BLAIN, BERNARD *Liberty*
Physics Chemistry
Zeta Chi.

BOLLINGER, ROBERT *Excelsior Springs*
Biology Chemistry
Zeta Chi; Beta Beta Beta; Biology Assistant.

BOWMAN, GEORGIA BESSIE *Liberty*
Latin French
Beta Sigma Omicron; Women's Pan-Hellenic
Council; Pi Kappa Delta; Sigma Tau Delta; Dra-
matic Club; Alpha Psi Omega; Panaegis; Tatler Staff
'32; Student Staff '32, '33, '34; Symbols '33; Debate
'31, '32, '33, '34.

CHRISTIAN, LESLIE *Liberty*
History Political Science
Ministerial Group; Student Volunteer; Basket-
ball '33.

CROSE, PAUL TYSON *Bosworth*
Education English
Phi Gamma Delta; "J" Club; Sophomore Class
President; Football '30, '31, '32; Captain of Foot-
ball '33; Basketball '32, '33; Track '31, '32, '33, '34.

DAVIS, WILLIAM E. *Richmond*
Physics Mathematics
Phi Gamma Delta; Sigma Pi Sigma; Interfrater-
nity Council; Glee Club.

DAWSON, WILFRED *Monroe City*
History Economics
President, Kappa Alpha; Band.

DUNN, DOROTHY *St. Joseph*
History Political Science
International Relations Club.

ENNIS, EDNA MAE *Kansas City*
History Political Science
T. N. T.; Panaegis.

FARRIS, JAMES WILLIAM *Boonville*
Education English
Phi Gamma Delta; Aeons; Student Editor '32;
Tatler Staff '33, '34; Student Senate '31; Sigma Tau
Delta; Gamma Pi Epsilon; International Rela-
tions Club; Beta Beta Beta; Rhodes Candidate '34;
Interfraternity Council; Sons of Rest.

FIGHTMASTER, BERNARD *Liberty*
Physics Education
"J" Club; Football '30, '31, '32, '33; Sigma Pi
Sigma; Conference Team '33.

GRANT, HERMAN *Lathrop*
History Political Science
Kappa Alpha; Football '30, '31, '32, '33; Captain
'32; Conference Team '30, '31, '32, '33; Captain
Conference Team '33; "J" Club; Sons of Rest; Pan-
Hellenic Council; Board of Control '31; Track '31,
'32, '33; Captain '31.

HAGOOD, HURLEY *Hannibal*
Sociology Economics
Sigma Nu; Rhodes Candidate '33; Football '33;
Aeons; Tatler '33; Scout Legion; Sons of Rest.

HAMMON, GEORGE E. *Hannibal*
History Political Science
Ministerial Group; Dramatic Club.

HANBACK, GENEVA *Liberty*
Education Mathematics

HICKS, GEORGE *Monroe City*
Education English
Kappa Alpha.

HUME, VERA *Marshall*
Education History
President Beta Sigma Omicron; International
Relations Club; Pan-Hellenic Council.

JOCHUM, EVERETT WRIGHT *Pierce City*
Biology Spanish French Chemistry
Beta Beta Beta; Tatler Staff '33.

LONG, EARL J. *Canuthersville*
History Economics
Kappa Sigma; International Relations Club.





LONG, LEE B.¹ Liberty
English Greek
Phi Gamma Delta; Ministerial Group; Student Volunteer; The Scout Legion; Cheer Leader '32, '33; Alpha Psi Omega.



MADDOX, ARTHUR L. Wichita, Kan.
History Education
Glee Club; International Relations Club.



MASON, MILDRED Liberty
English Education
T. N. T.



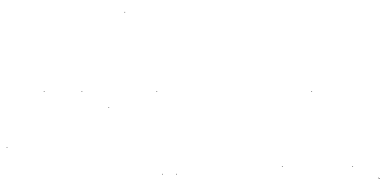
MASTERS, HERBERT Kansas City
Mathematics Physics
Kappa Sigma; President Sigma Pi Sigma.



MEDLIN, SHAD Pittsburg, Kan.
Sociology Economics
Sigma Nu; Ministerial Group; Board of Control; Student Senate; Student Volunteer; President Ministerial Group '33.



McKEE, WOODROW Polo
Mathematics Physics
Alpha Zeta Pi.



NEAL, KENNETH Moberly
History Political Science
Kappa Alpha; Debate '33, '34.

NORRIS, CHARLES Fort Collins, Colo.
Sociology History
Ministerial Group; Dramatic Club; Student Volunteer.

OWEN, WILLIAM L. Excelsior Springs
English Education
Kappa Sigma; Tatler '32; International Relations Club; Tennis '33, '34; Band; Cheer Leader '33, '34.

PER LEE, ALICE Liberty
English Latin
T. N. T.; Women's Pan-Hellenic Council; Student Staff '32; International Relations Club; Panaegis; Glee Club.

PIELSTICK, DON Cumro, Nebraska
Bible Greek
Ministerial Group, Alpha Zeta Pi; Student Volunteer; Glee Club.

PIELSTICK, MARGARET Cumro, Nebraska
Bible Greek
Student Volunteer; Dramatic Club.

RAMERIZ, DONATO Kansas City
English Education
Ministerial Group; Alpha Zeta Pi; Track '31, '32, '33, '34; "J" Club; Student Volunteer; The Scout Legion.

RAPSON, ELINOR Excelsior Springs
History Sociology
President T. N. T.; International Relations Club; Glee Club; Panhellenic Council.

RATHMANN, J. C. Liberty
History Sociology
Sigma Nu; International Relations Club; Forensic; Alpha Psi Omega.

STANLEY, BERRY WALL Richmond
History Sociology and Economics
Phi Gamma Delta; Band; Tatler '34.

SUMMERS, BRUCE Palmyra
History Political Science
Zeta Chi; International Relations Club; Band; President of Student Body; Interfraternity Council.

THOMPSON, ARTHUR Kansas City
History Economics
Ministerial Group

TRIPP, RAMONA St. Joseph
English French
Sigma Tau Delta; Alpha Psi Omega; Panaegis; W. J. C. Players; Debate; Oratory; "Symbols".

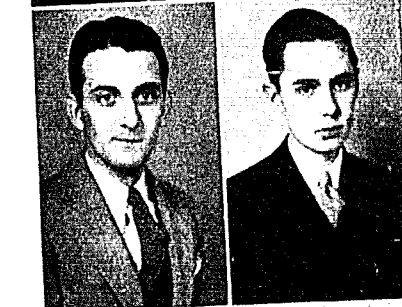
UTTER, MARVIN E. St. Joseph
Biology Chemistry
Ministerial Group; Alpha Zeta Pi; Beta Beta Beta; Dramatic Club; Debate; Band '31, '32, '33, '34; Track; The Scout Legion; Cheer Leader '31.

WALSER, A. G. Holt
Biology Chemistry
Kappa Sigma; Beta Beta Beta.

WILEY, WARD Kansas City
French German
Zeta Chi; Captain Tennis Team '33, '34; Tennis '32, '33, '34; "J" Club.

WEBER, PAUL Jefferson City
History Sociology
Ministerial Group; Student Volunteer; International Relations Club.

WHALEY, NELLIE Liberty
English Greek
Oratory; Student Volunteer.





WILLIAMS, EDGAR
History Sociology
Student Volunteer; Band '33, '34; Glee Club '31, '32, '33, '34; Ministerial Group.

Sedalia



PRATT, EUGENE
Bible Greek
Ministerial Group; Student Volunteer; President Student Volunteer '32; Track '31, '32, '33, '34; "J" Club; Vice-president Freshman Class.

Sedalia

WRIGHT, ESTHER MAE
English Latin
President Y. W. C. A.; President Alpha Psi Omega; Student Staff '32; Dramatic Club; English Assistant.

Independence

YOUNG, FOREST L.
English Greek
Ministerial Group; Beta Beta Beta.

Liberty

Juniors

ALLEN, CYRUS K.
Physics Chemistry
Zeta Chi; Sigma Pi Sigma.

Rothville

ALSPAUGH, GLEN
Physics History
Kappa Alpha.

Liberty

ANDERSON, GRANT
History Sociology
Alpha Zeta Pi; Dramatic Club; Ministerial Group; Student Volunteer; Student Staff '33.

Kansas City

ATWOOD, LENORA
Sociology History
Beta Sigma Omicron; Band '34; Y. W. A.; Y. W. C. A.; Dramatic Club; Forensics.

Kansas City

BAILEY, MARGARET
English French
Sigma Rho; Student Volunteer; Y. W. A.; Y. W. C. A.

Sheridan, Wyo.

BECK, BURTON
Sociology Economics
Zeta Chi; Pi Kappa Delta; Alpha Psi Omega; Debate; International Relations Club; Track '32, '34; Student Staff '32.

Milwaukee, Wis.

BECK, FRANK C.
Economics Sociology
Phi Gamma Delta; Vice-president International Relations Club.

Kansas City

BELLES, MARY
History Political Science

Liberty

BROWN, WILSON G.
Chemistry Biology
President Phi Gamma Delta; Vice-president Theta Chi Delta; Beta Beta Beta; Glee Club.

Bosworth

COEN, CHESTER
Physics Mathematics
Band; Sigma Pi Sigma; Zeta Chi.

Jamesport

COX, RUTH
History Political Science
T. N. T.; Cheer Leader '34; International Relations Club.

Excelsior Springs

CRUTCHFIELD, JOHN
History Political Science
Alpha Zeta Pi; International Relations Club; Ministerial Group; Student Volunteer.

Clifton Hill





CUMPTON, RALPH *Liberty*
 History Economics
 Zeta Chi; Football '31, '32, '33; Basketball '31, '32, '33.



DAVIDSON, JAMES *North Kansas City*
 Sociology Political Science
 Kappa Alpha; International Relations Club; Debate '33, '34; Oratory '34; Vice-President Pi Kappa Delta.



DUNCAN, DONALD *Boone, Iowa*
 English Education
 Phi Gamma Delta; Dramatic Club; Alpha Psi Omega; Ministerial Group; Managing Editor of '34 Tatler.

FORDHAM, BUFORD *Carrollton*
 Sociology Education
 The Scout Legion.



GAINES, CARL *Richmond*
 Chemistry Biology
 Zeta Chi; Theta Chi Delta; Beta Beta Beta; Glee Club; Band.

HALL, LUCILLE *Liberty*
 History Sociology
 T. N. T.; Alpha Psi Omega; Dramatic Club; Y. W. C. A.; Tatler '33; Acting Editor Tatler '34; "Symbols".



HALEY, NADINE *Boonville*
 Spanish French
 Sigma Rho; Y. W. A.; Y. W. C. A.; Student Volunteer.

HENSLEY, J. CLARK *Liberty*
 Bible Greek
 Vice-President Alpha Zeta Pi; Vice-President Ministerial Group; Pi Kappa Delta; Student Volunteer.



HUFFT, COLLINS *Liberty*
 Chemistry Education
 Kappa Alpha; Football '31, '32, '33; Track.

HUNT, CHARLES *Mt. Vernon*
 History Sociology
 Ministerial Group; Student Volunteer; Glee Club.

JARVIS, LESLIE *Buffalo, New York*
 History Political Science
 Zeta Chi; International Relations Club; Dramatic Club; Band '32, '33.

JENNINGS, CYRENA *St. Joseph*
 Chemistry Mathematics
 Sigma Rho; Student Volunteer.

JETER, KENNETH *Slater*
 History Education
 Sigma Nu; Football.



KIRCHNER, EUGENE *Liberty*
 Mathematics Greek
 Alpha Zeta Pi; Ministerial Group.



KIRKPATRICK, PAUL *Coffeyville, Kan.*
 Sociology Political Science
 Alpha Zeta Pi; Glee Club '34.

LYON, ROBERT *Richmond*
 History Sociology
 President Sigma Nu; Student Editor '34; Tatler '32; Interfraternity Council; Sons of Rest.



McELWAIN, RALPH *Cameron*
 Sociology History

MANN, RUTH *Independence*
 Spanish French



MUCHMORE, CLOYD *Appleton City*
 Biology Political Science
 Band; Beta Beta Beta; International Relations Club.

OFFUTT, THELMA LOU *Independence*
 Sociology Political Science
 Beta Sigma Omicron.



PAGE, C. W. *Excelsior Springs*
 History Political Science
 International Relations Club; Track; Captain Track Team '34; The Scout Legion.

PARKER, ELIZABETH *Shenandoah, Iowa*
 French Spanish
 Dramatic Club.



PARKER, TALTON *Shenandoah, Iowa*
 History Political Science
 Kappa Sigma; Dramatic Club.

PAYNE, EDNA *Liberty*
 Education Spanish



REPPENHAGEN, WALTER L. Salisbury
 History Political Science
 Alpha Zeta Pi; Ministerial Group; Student Volunteer.

REYNOLDS, GILBERT Maysville
 History Political Science
 Kappa Sigma; International Relations Club; Sons of Rest; Scout Legion; History Assistant; Student Staff '33; Student Editor Elect '34.

SEWARD, JOHN Kansas City
 History Economics
 Phi Gamma Delta.

SMITH, CECIL Fayetteville, Ark.
 History Political Science
 Ministerial Group.

SUTHERLAND, LON Raytown
 History Political Science
 President Kappa Sigma; President Junior Class; Interfraternity Council; Basketball '34; Student Senate '33; "J" Club.

THOMPSON, MELVIN Liberty
 Mathematics English
 Kappa Sigma; Vice-president Junior Class; Interfraternity Council; Football '31, '32, '33; Basketball '32, '33, '34; "J" Club.

TRADUE, JAMES Pleasant Hill
 Chemistry Physics
 Phi Gamma Delta; "J" Club; President Theta Chi Delta.

VIKE, BERNADINE Eagle Grove, Iowa
 Sociology Education
 Beta Sigma Omicron; Glee Club; Y. W. C. A.; Y. W. A.

WICKSTROM, DOROTHY Kansas City
 Education English
 Beta Sigma Omicron; Glee Club; Y. W. C. A.; Y. W. A.

WILLIS, FRANCIS Spickard
 English History
 Sigma Tau Delta; Student Staff '33; English Assistant.

YATES, INEZ Liberty
 English Education
 T. N. T.; Tatler Staff '34; Y. W. C. A.

YOUNG, RALEIGH Stockton, Calif.
 Mathematics Chemistry
 Phi Gamma Delta.

Sophomores

BAYSE, EDWIN Independence
 BESSMER, ROBERT Independence
 BRADY, EDWIN Warsaw

BURCH, MARY BELLE Bradyville, Iowa
 CAMPBELL, MILDRED Kansas City
 CARLIN, MAUD Granby

COOPER, RALPH Liberty
 DAVIS, KIMZEY Liberty
 DAVIDSON, MARGARET California

DEMASTERS, ROBERT Liberty
 DEMASTERS, RAY Liberty
 DITTO, VELLA Plattsburg

HALE, HAZEL MARIE Springfield
 HAMMOND, ARDATH Harris
 HEMPHILL, RUSSELL Kennett

HENNON, MANSEL St. Louis
 HILTON, RICHARD Hardin
 HINTZ, AUGUST La Monte

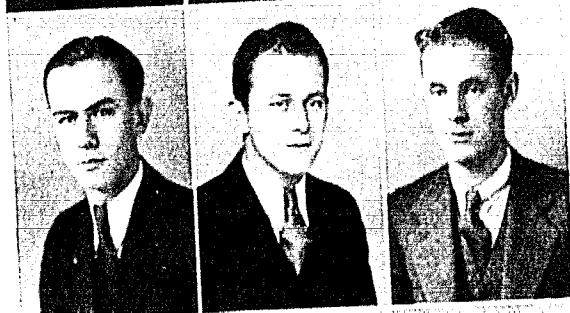




HOCKETT, ALICE Liberty
 HOOVER, MARTHA Liberty
 JENNINGS, JACK Chicago, Illinois



KOCH, GEORGE B. Liberty
 KOCH, MARY ANNA Liberty
 MCGRAW, FRANCES California



MAGRUDER, N. BURNETT Odessa
 MARRIOTT, CREAD Chinkiang, China
 MOORE, CHARLES Lathrop



MOOREHEAD, ANDREW Grand Junction, Colo.
 MURPHY, EMMETT Laredo
 PALMER, JUDSON Kansas City



PLUMMER, PHILLIP Turney
 RAMIREZ, CIRO Kansas City
 RICHARDS, WILLIAM Kansas City



REALING, HERBERT Macon
 ROBINSON, VYRA ALICE Raytown
 SCHAEFER, WILLIAM Kansas City

SMITH, C. LOWELL Liberty
 THOMPSON, MILAN Washington, Iowa
 THOMPSON, PAUL Liberty



STOUFFER, EARL Norborne
 TROTTER, HARRY Carrollton
 TRUAX, DOROTHY Liberty



TURPIN, HARRY Liberty
 VAUGHN, LOUISE Blue Springs



WHITE, GEORGE Eagle, Colo.
 WOOD, JOHN California





Freshman

ARCHER, EDGAR C. Liberty
AULL, GEORGE Liberty
BAILEY, GEORGE Sheridan, Wyoming



BECK, LEON Norborne
BELL, KELLER Liberty
BETTS, CLARENCE Independence



BRANT, EDWARD Liberty
BROWER, CLYDE Independence
BROWNING, WILLIAM Olathe, Kansas



BURKHARDT, ANNAJANE Liberty
BURNLEY, EVELYN Buckner
BYRNS, ELSE JANE Liberty

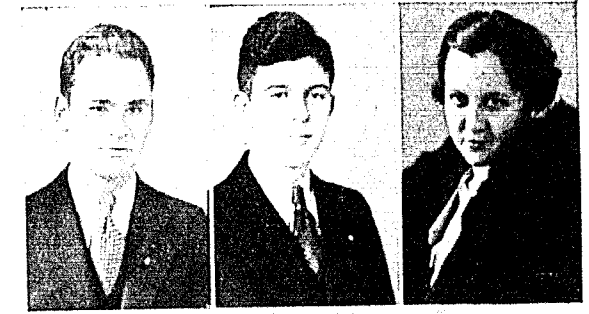


CAMPBELL, KATHERINE Liberty
COPE, JAMES C. Lexington
CARPENTER, WILLIAM Rothville



CRAWFORD, MEDORA Liberty
CHRANE, FRANK Liberty
DAVIS, ELEANOR Liberty

DURHAM, J. DUDLEY Dearborn
ELLIS, LANCE Molino
EUBANKS, FERN Monett



FOLEY, JACK Kansas City
HANBACK, GEORGE Liberty
HUFFT, JAKE E. Liberty



HYATT, ROBERT Grand Junction, Colo
JOHNSON, FORREST Buckner
JOHNSON, ROBERT M. Independence



KEIR, MAXINE Independence
KNIGHT, CLAYTON Weaubleau
MCCOMAS, JOE ALLEN Liberty



MCDONALD, EDWARD Liberty
MCDUGALL, MARGARET Liberty
MCGONIGLE, BETTY Grosse Point, Mich.



MANN, WILLIAM Kansas City
MANSFIELD, PAUL St. Joseph
MARQUETTE, W. R. Harrisonville





MARTI, KENNETH Windsor
 MILLER, MARGARET Platte City
 MILLION, MILDRED Rock Port



ORMSBY, H. A. Liberty
 PAYNE, CHARLES Liberty
 PAYNE, EMMA Liberty



PERRY, BENJAMINE MacFall
 PIGG, DONALD GEORGE Orrick
 PROCTOR, L. M. Independence



QUICK, OSWALD Hardin
 RENSRAW, FRED Boonville
 RHODES, HOWARD Hardin



SAUNDERS, FRANCES JEAN Liberty
 SETTLE, PAULINE Slater
 SHOUSE, MARY BETH Blackwater



SLATER, ESTELLE Carrollton
 SMILEY, WALTER Excelsior Springs
 SPURGIN, MARY Winterset

STURGES, VIOLA Carrollton
 SWEANY, ELLEN Gallatin
 VINYARD, PAUL St. Louis



WATERS, WILLIAM Liberty
 WESTBROOK, MARY MARGARET Marshall
 WHISTLER, CLARK Locust Grove, Okla.



YOUNG, MADEL Liberty
 WILSON, WALTER Carrollton
 WYATT, DELMA Lamar, Colo.



Student Government



RUSSELL ASH
President of Senior Class

SHAD MEDLIN
Vice-President of Senior Class

LON SUTHERLAND
President of Junior Class

BURTON BECK
Vice-President of Junior Class

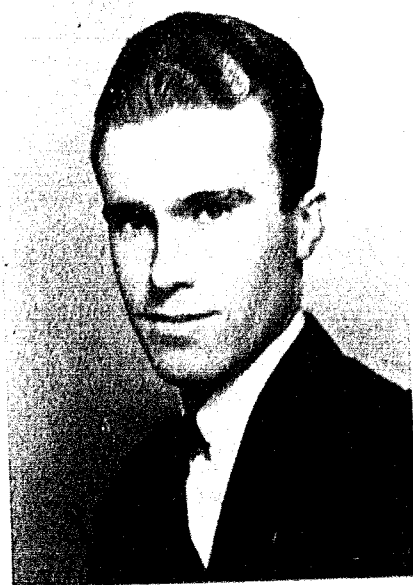
EMMETT MURPHY
President of Sophomore Class

CHARLES PAYNE
President of Freshman Class

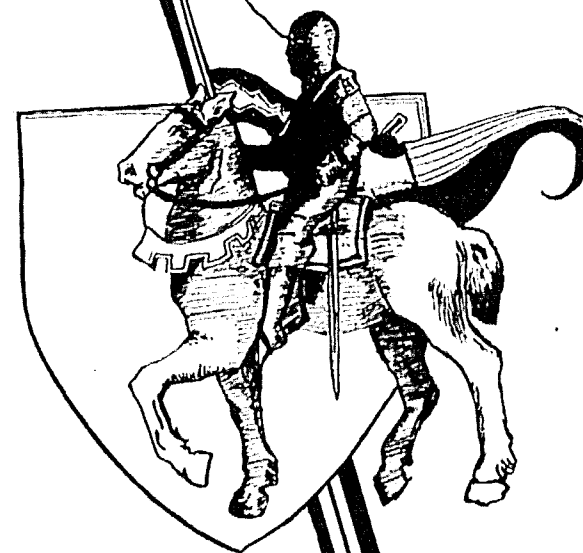
This past year the Student Senate and the Board of Control have been an active force in the student activities. It is through these two bodies that the activities of the school have been so well regulated. The duty of the Student Senate is to interpret the Constitution to the students. It is their duty to make amendments to the Student's Constitution of William Jewell College, to discipline the Freshman class, to call the elections and to act in the capacity of judges and clerks at the elections. The Student Senate does not have a faculty representative as a member of the group. It was through the consent and the cooperation of the Student Senate that the New Deal achieved the success that it did.

The Board of Control is composed of the same members and has charge of censorship of the student publications and determines the policies of these publications. The Board of Control has Byrns, Pugh, and Davis as members.

This form of student government has been very successful and proves that the offices are a medium for student representation and that the administration is in capable hands.



BRUCE SUMMERS
President of the Student Body





Queen
Margaret McDougall





Athletics



R. E. BOWLES
Coach of Athletics

Coach "Dad" Bowles has proved to be a sturdy leader and a builder of men. His task has been a difficult one—to select and assemble from a curtailed enrollment of students athletic teams to which a host of interested alumni and students could point with pride. Although the Cardinals have tasted defeat there has not been a loss of the fighting spirit which "Dad" so successfully instilled in them. Disregarding the scores, both favorable and unfavorable, Jewell teams have shown their opponents that they cannot be classed as inferior in good sportsmanship and a will to win.

The football season got under way with a series of tie games and narrow-margin defeats. When Baker came to the campus on Homecoming Day, they found awaiting them a determined Cardinal eleven which ended a seventeen year

jinx by sending the Wildeats home at the short end of a 6-0 score. Another example of one of "Dad's" teams refusing to admit defeat even though some of the most dependable men were forced to retire to the bench because of injuries which beset the team throughout the season.

It has been "Dad's" policy to offer every student the opportunity to enjoy some form of athletics. He has always encouraged the organization of intramural and interclass teams. Under "Dad's" supervision this year's All-school Basketball Tournament was a great success. There is also opportunity for all kinds of gymnasium work. Intramural baseball is a favorite Spring sport.

To "Dad" Bowles goes the responsibility for the achievement of expressing the spirit of the college through its most popular medium, athletics.



PAUL CROSE

Co-captains Hulen Brimer and Paul Crose piloted the Cardinals this past football season. Both of these players won the appreciation of their team-mates and the student body. Injured early in the season, they were not always able to fill the positions around which the offensive and defensive plays were made, and were forced to lead their team from the side-lines. For the first time in the history of the school a Jewell football player was selected for the All-Conference football team of the Missouri College Union for the fourth consecutive year when Herman "Polly" Grant was awarded this honor. "Polly" added further distinction to the school by being chosen as cap-

Football

tain of the mythical eleven. Combining quick thinking and accurate judgment with a brilliant style of play, "Polly" played for the last four years as halfback a kind of football which earns him the right to be classed among Jewell's truly great athletes.

Another Jewell man chosen for the All-Conference team was Mike Fightmaster. For four years Mike has added strength to his side of the line with his faithful and dependable play, and his ability helped make possible many advances from the backfield.

The light Jewell team centered much of its offense around a passing attack from Grant to Thompson. It will be remembered when they were called from the "cripple-bench" to complete a pass and touchdown necessary to tie the C. B. C. Ducks in the final minutes of play. Deitch, full-back, and Crowe, quarterback, playing their first year at Jewell developed into stellar players as the season progressed. Hurley Hagood, chosen as center on the All-State second team, held down this position with unusual ability.

Veterans who continued to lend color to the



Thompson

Schilling

Cumpton

Hagood

Robertson

Deitch

Crowe

Huff

Football

team this year were: Shetty, Stouffer, Wheat, DeMasters, Hufft, and Cumpton, All-State second team tackle.

Newcomers to the team who earned their ranking as top-notch players were: Holley, Davis, Winsor, and Schilling.

Bud Robertson wound up his second year as a regular by being chosen captain of the 1934-35 team.

The most outstanding game of recent years was the Baker contest. For the first time in seventeen years William Jewell defeated a strong Baker team on Homecoming Day by a score of 6 to 0. In the second quarter a pass from Grant to DeMasters accounted for the lone touchdown of the game and cinched the victory for the Cardinals. The remainder of the game saw the Cardinals turning back repeated attempts to score by the desperate Wildcats.

Another memorable game took place on the Missouri Valley gridiron. The champion Valley eleven held Jewell to a 7-7 tie in a game marked by a never-ending series of bad "breaks" for the Cards.

In the Central game, played at Fayette, the Cards again took revenge, this time tying the

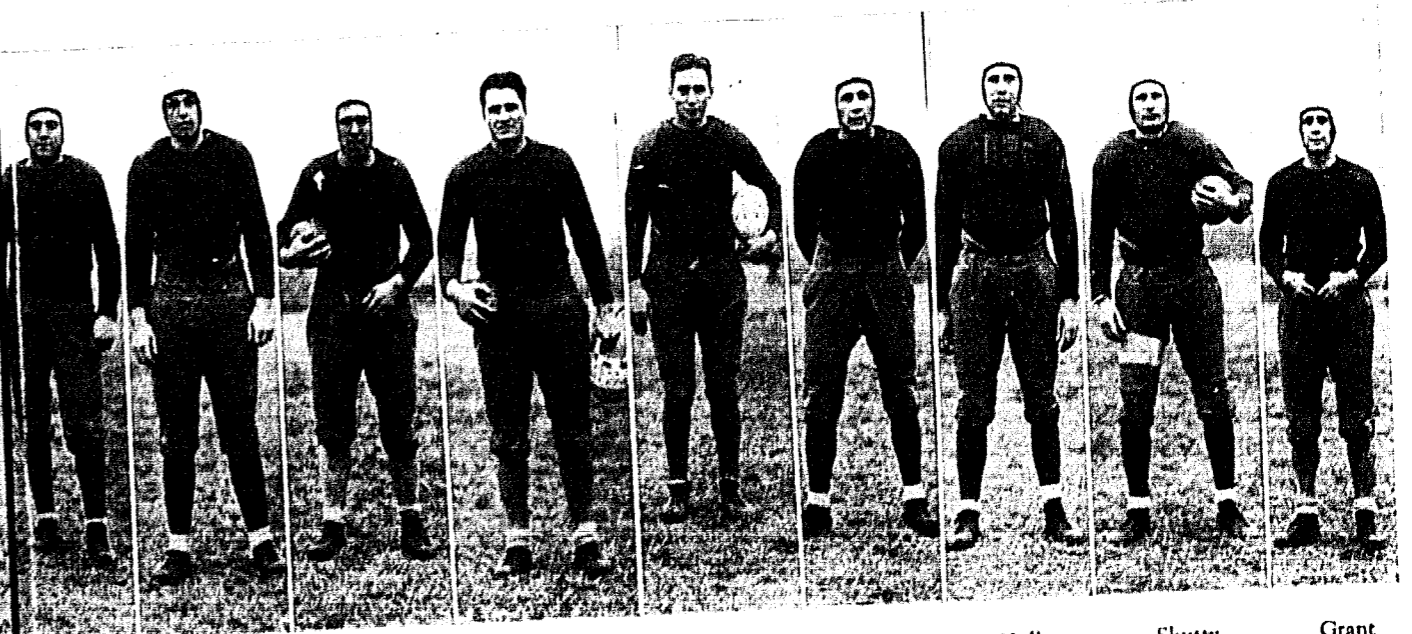


"POLLY" GRANT
All-State Captain

team which had beaten them the previous seven years. The game ended with neither team able to score. "Polly" Grant was forced to leave the game in the first period, leaving Thompson to be the chief ground-gainer for the Cardinals.

The team is greatly indebted to Mansel Hennon who, in his capacity as trainer, rendered "Dad" Bowles and the squad faithful service throughout the season.

Fortunately "Dad" has coached his teams with an eye to the future. While the graduation of five letter-men is regarded as a loss by the entire student body and squad, the prospects for next year's team are by no means dull.



Winsor

DeMasters

Fightmaster

Crose

Wheat

Stouffer

Holley

Shetty

Grant

Football

The Season's Results

JEWELL 12
 JEWELL 6
 JEWELL 7
 JEWELL 7
 JEWELL 6
 JEWELL 6
 JEWELL 7
 JEWELL 7

LIBERTY	CULVER-STOCKTON 14
LIBERTY	OTTAWA 7
LIBERTY	C. B. C. 7
MARSHALL	MO. VALLEY 7
TARKIO	TARKIO 19
LIBERTY	BAKER 0
FAYETTE	CENTRAL 7
KANSAS CITY	ROCKHURST 29



Top Row: Maddox, Moore, Robertson, Whistler, Chrane, Crockett, Cooper, Diman.
 Middle Row: Coach Bowles, Stouffer, De Masters, Jackson, Wheat, Thomas, Holley, Huff, Winsor, Fightmaster, Cumpston, Coggswell.
 First Row: Deltch, Crowe, Carter, Shetty, Grant, Brimer, Crose, Hagood, Davis, Schilling, Thompson, Ramirez.

Basketball

The Season's Results

JEWELL 41
 JEWELL 26
 JEWELL 31
 JEWELL 20
 JEWELL 30
 JEWELL 24
 JEWELL 29
 JEWELL 26
 JEWELL 20
 JEWELL 13
 JEWELL 29
 JEWELL 16
 JEWELL 26
 JEWELL 24
 JEWELL 19
 JEWELL 21

LIBERTY
 TRENTON
 WARRENSBURG
 LIBERTY
 LIBERTY
 TARKIO
 LIBERTY
 LIBERTY
 FULTON
 FAYETTE
 MARSHALL
 LIBERTY
 ROLLA
 SPRINGFIELD
 LIBERTY
 LIBERTY

TRENTON 15
 TRENTON 6
 WARRENSBURG 44
 CULVER-STOCKTON 21
 CENTRAL 25
 TARKIO 33
 WARRENSBURG 39
 TARKIO 30
 WESTMINSTER 23
 CENTRAL 31
 MO. VALLEY 28
 WESTMINSTER 25
 ROLLA 30
 DRURY 30
 ROLLA 25
 MO. VALLEY 26



Couch Bowles
 Renshaw
 Marquette
 Monroe
 Pratt
 Hennon
 McComas
 Archer
 Hicks
 Cumpston
 Sutherland
 Thompson

Basketball

Basketball practice began the first week in December with "Dad" Bowles shaping his team around a nucleus of six lettermen reporting for early workouts. The lettermen returning were: Pratt, DeMasters, and Thompson, forwards; Holley, center; and Cumpton and Crose, guards. Also reporting were former Varsity players, Masters and Sutherland.

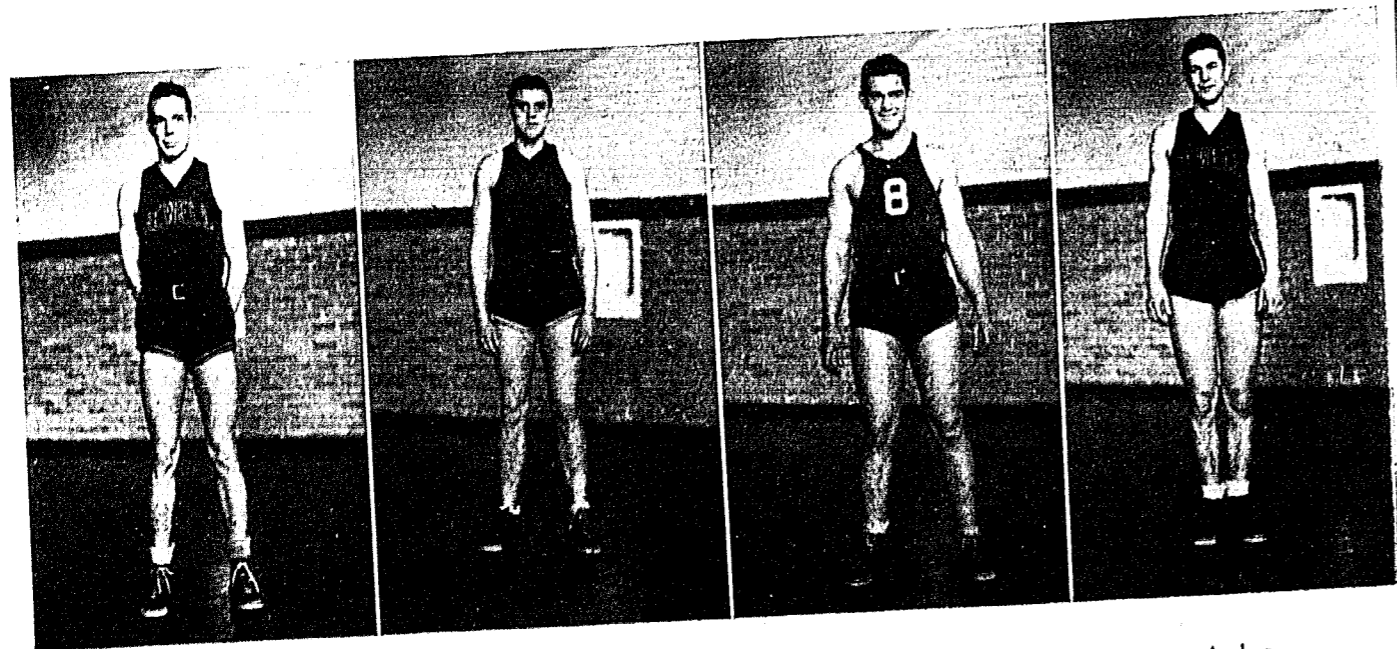
New men appearing on the court were: Hicks, Archer, Marquette, Renshaw, Singleton, Robertson, Carpenter, McComas, Monroe, and others, all of whom were to prove their mettle as Cardinal basketeers.

A large share of the basketball squad was made up of Freshmen, whom "Dad" used at every opportunity in view of developing a new nucleus for next year. The veterans continued carrying the major responsibility of steering the squad

through the several difficult games throughout the season.

There was a minimum of discouragement noticeable among "Dad" and the members of the squad; however, Old Man Jinx apparently took up temporary quarters in the Cardinal nest. Illness accounted for the absence of players from practices and games, and later in the season Holley, sensational center, became ineligible for play.

Pep and enthusiasm ran high at home games. The promising showing the team made early in the season won the support and pride of the student body and interested outsiders. The squad had the double assurance of both excellent material and enthusiastic support and well deserved the admiration it received.



McComas

Hicks

Cumpton

Archer

Basketball

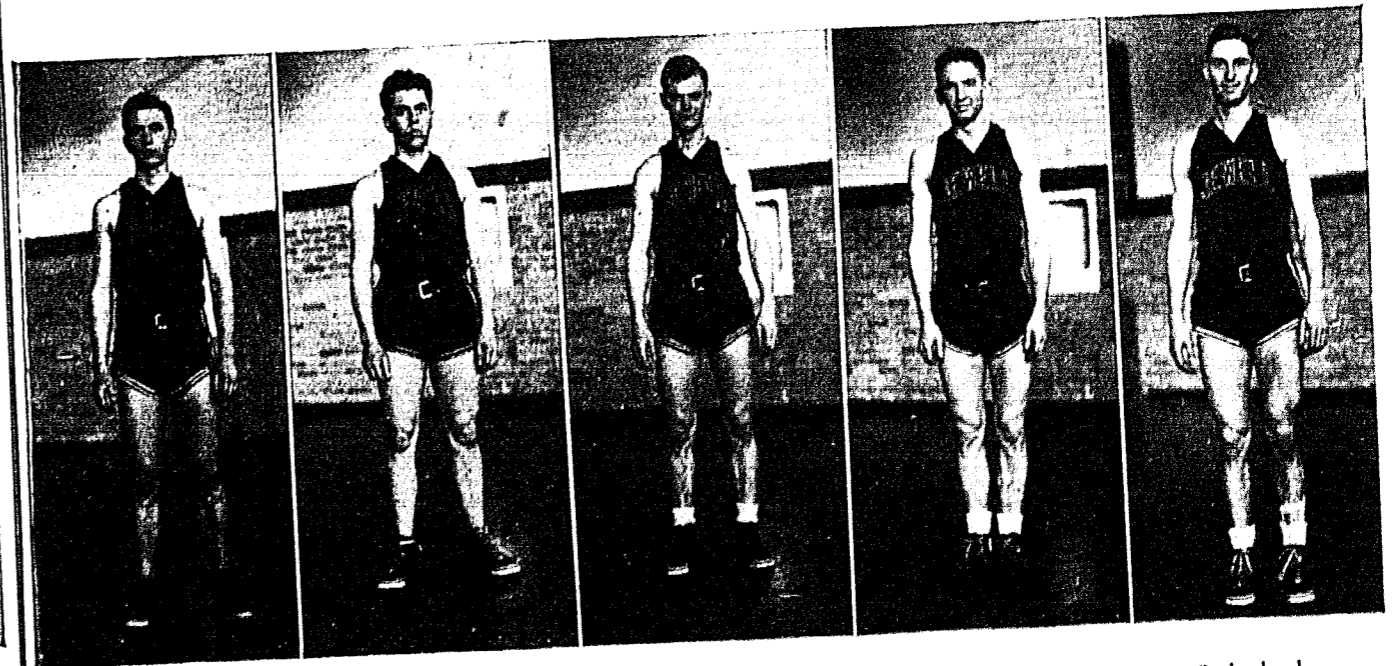
The Cardinal cagers made short work of smothering Trenton Junior College in two warm-up games in pre-season competition.

Opening her conference play in a game with Culver-Stockton, Jewell lost by the close score of 20 to 21. Holley was high-point man and held Hollis, two-year all-state man and conference high scorer, scoreless in the first half and permitted him to sink only one field goal in the second.

Jewell blasted Central's hopes for repeating last year's conference championship by winning from the Eagles 30-25. Cumpton, Thompson and Holley starred.

The Cards hit a losing streak the next few games, regaining their old stride by defeating Missouri Valley 29-28. In the last half Jewell lost the comfortable lead piled up the first period, and it was Cumpton, playing his usual steady game, who won the game with a field goal late in the contest.

At the close of the season, "Dad" had developed a group of first-year men who will prove invaluable support to his seasoned veterans when the Cardinal net-swishers resume play next year.



Monroe

Pratt

Marquette

Thompson

Sutherland

Intramural and Interclass Athletics

Brown Gymnasium was the scene of many hard fought games in the round robin contest for intramural honors. All fraternities were represented as well as several other organizations and independent teams. Conjectures as to the winner were many and varied. Kappa Sigma at last emerged from the fray, battered but victorious. Letter-men and members of the squad were not allowed to play, but a great deal of good material was found in the various teams. The games were well attended and the season was a very successful one. After the regular basketball season the interclass tournament was started and the Seniors were claimed the winners.

RESULTS OF THE SEASON

Phi Gamma Delta 23	Black Hounds 17
Preachers 15	Sigma Nu 15
Black Hounds 33	Zeta Chi 28

Kappa Alpha 43
 Phi Gamma Delta 31
 Kappa Sigma 35
 Alpha Nu 30
 Kappa Alpha 35
 Black Hounds 28
 Kappa Sigma 44
 Phi Gamma Delta 34
 Kappa Alpha 22
 Kappa Sigma 35
 Preachers 22
 Alpha Nu 22
 Phi Gamma Delta 37
 Preachers 16
 Alpha Nu 22
 Phi Gamma Delta 37
 Kappa Sigma 35
 Kappa Alpha 13
 Alpha Nu 29
 Kappa Sigma 19

Sigma Nu 18
 Preachers 13
 Black Hounds 12
 Zeta Chi 8
 Preachers 11
 Sigma Nu 27
 Preachers 7
 Alpha Nu 26
 Zeta Chi 20
 Sigma Nu 8
 Zeta Chi 20
 Sigma Nu 7
 Kappa Alpha 31
 Black Hounds 12
 Preachers 14
 Zeta Chi 15
 Zeta Chi 13
 Alpha Nu 9
 Black Hounds 12
 Kappa Alpha 11



TOP ROW:

SUTHERLAND
 WALSER
 THOMPSON

FIRST ROW:

OWEN
 MANN
 DEMASTERS
 ROBINSON
 MASTERS

Track



Winning the 440 for Jewell.

Track as the Spring sport is popular with contestants as well as spectators. The cooperation and teamwork that appeared with the other teams has disappeared with this sport and individual competition has taken its place.

C. W. Page was chosen as the 'Captian of the 1934 Track team. Page won honors the previous season as the representative in the middle distance events. Other veterans who reported to "Dad" Bowles in the early Spring practice were: Mertz, one and two mile; Koch, broad jump; Smith, one and two mile; Sutton, pole vault; Huft,

weights; Crose, weights; Hammon, one-half mile and 440-dash; and Grant, pole vault.

This current season promises to fulfill the expectations of last year when the showing at the Conference Track Meet showed that the Track team was gaining ground. And the record so far this year has strengthened the morale of the team and great things can be expected from this team in this season's meets. Even the first year men show promise that as a rule takes several years to develop.



First Row: Chrane, Vinyard, Whistler, Wilson, Hemphill, Coen, Moore, Pratt.
 Second Row: Sutton, Maddox, Bayse, Pielstick, Stirk, J. Smith, Koch, Shutty, Coach Bowles.
 Third Row: Page, Singleton, Shades, Jeter, Hammon, Marriot.

Track



Off to a flying start.

The results of this season's track record have been disappointing to those supporters who expect victory to be satisfied. Near the first of the season the team lost two of their best men—Mertz and Captain Page. Both were kept from entering the meets by doctor's orders. In overcoming this obstacle the efforts were concentrated on the newcomers to the team. In regard to future teams these men were trained to overcome this difficulty in future years.

Chrane and Wilson, both freshmen, showed

promise and made good records for themselves and the team. Both are sprint men. Those in the long distance events are: Smith, Hammon, and Maddox. Those in the medium distance are: Pratt, Stirk, Whistler and Hemphill. For hurdles Sutton, Pratt and Hufft went through the meets. Those in the field events are: Bayse, Sutton, Crose, Hufft and Pielstick. The outlook for next season is much brighter and the team is training with that in view.

Smith winning the two-mile.



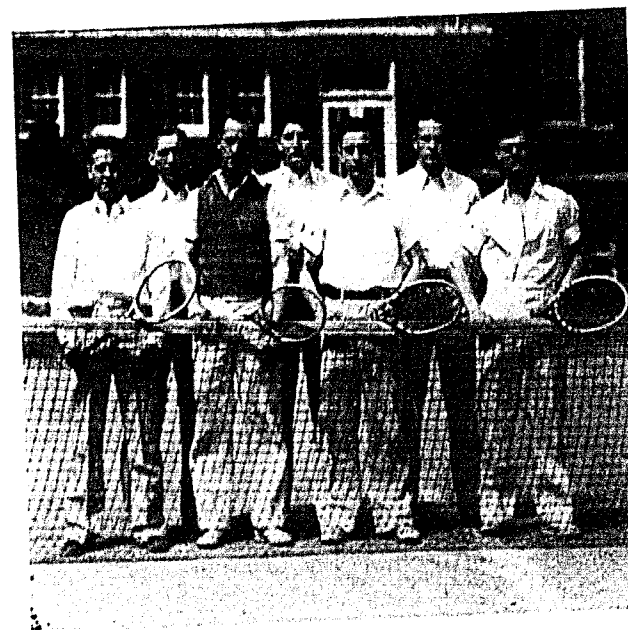
Tennis

The tennis team can point with pride to their record for this season and the past season. Captain Wiley has led the team to repeated victory and has won for himself the title of Missouri Champion. Despite the fact that most of the team is composed of new men this year, their successes seem to show that there will be strength in this new team.

The newcomers to the team are Marquette, Monroe, Bell, and Renshaw. The veterans are Poloson, Owen and Long. Through the playing of this team they have developed into one of the best teams in the state and are expected to continue their victories.



WARD WILEY
Tennis Team Captain



First Row—LONG, WILEY,

MONROE, MARQUETTE.

Top Row—BELL,

POLOSON, RENSHAW.



RUTH COX
 Director of
 Girls' Physical Education

Women's Athletics

The Basketball Tournament was limited to the Freshman and Sophomore classes. The Sophomores won the best two out of three.

Sophomore		Freshman
Hoover	F.	Westbrook
Robinson	F.	Sweany
Willis	J. C.	Crawford
Vaughn	R. C.	Burkhardt
McGraw	G.	Campbell
Burch	G.	McGonigle

In the early Spring swimming exhibitions were held which were well attended by the entire student body. Those entered were: Hazel Marie Hale, Frances McGraw, Betty McGonigle, Mary Belles, Eleanor Davis, Else Byrns, Medora Crawford, and Vyra Alice Robinson. Those who entered were in the beginning and advanced classes.

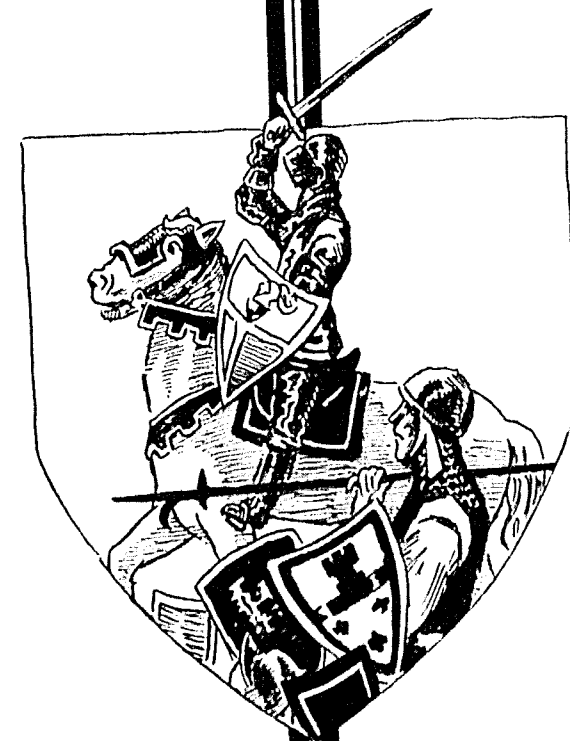
The participation of women in athletics is a worthy achievement and promises to be more important each year.

The Physical Education Department for Women has been under the able direction of Miss Ruth Cox. It has not been possible to enter into any form of intercollegiate contests this past year but there has been stimulated interest in the

interclass games. Also the "Red Hots," the popular Freshman pep squad, was under the direction of Miss Cox. The "Red Hots" performed between halves at all the football games and proved very popular with the student body. The members are: Pauline Settle (leader), Betty McGonigle, Mary Beth Shouse, Mary Margaret Westbrook, Katherine Campbell, Medora Crawford, Fern Eubanks, Jeanne Anderson, Else Byrns, Eleanor Davis, Evelyn Burnley, Ellen Sweany, and Dorothy Woods. The costumes of the organization were the long black and red capes worn by the boys in the band.

A new feature in the department was a tumbling team which entertained at the basketball games. The members of the team are: Pauline Settle, Vyra Alice Robinson, Mary Belles, Cyrena Jennings and Ruth Cox.

The courses taught to large classes this year were: beginning swimming, intermediate swimming, advanced swimming, basketball, volleyball, and tennis. All of these classes are enjoyed by large groups of girls, and their popularity is shown by the attendance.



Crafts and Gilds



Queen
Elinor Rapson





VIRGINIA D. RICE
Director of Dramatics

KIRKPATRICK
EUBANKS
UTTER
PER LEE

SLATER
HAMMON
McDOUGALL
THOMPSON

ANDERSON
REALING
LONG
MILLER

HALL
RATHMANN
VAUGHN
JARVIS

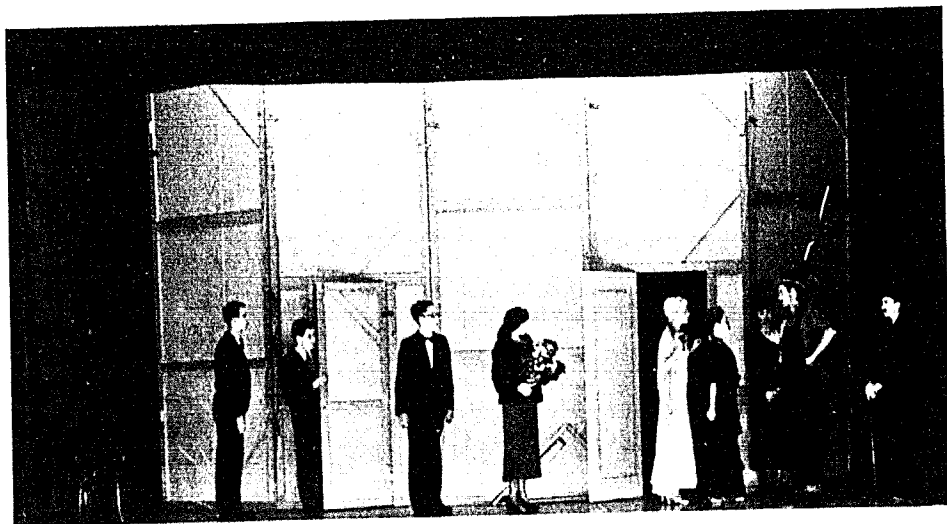
DUNCAN
BOWMAN
BECK



Dramatics

The Dramatic Season has been highly successful. Those acting, directing, working, and managing the dramatic productions of this past season deserve the compliments of the general public and the student body. The things accomplished this past year have often reached the height of amateur productions in acting and presentation. It has been through the loyal and boundless efforts of Miss Rice that much credit of the success is due. She not only directed but took a very difficult role in one of the plays. It is her sincerity of the drama that helps those eager to learn.

Forensics



The back stage scene
from "Torchbearers"

"Torchbearers" Cast

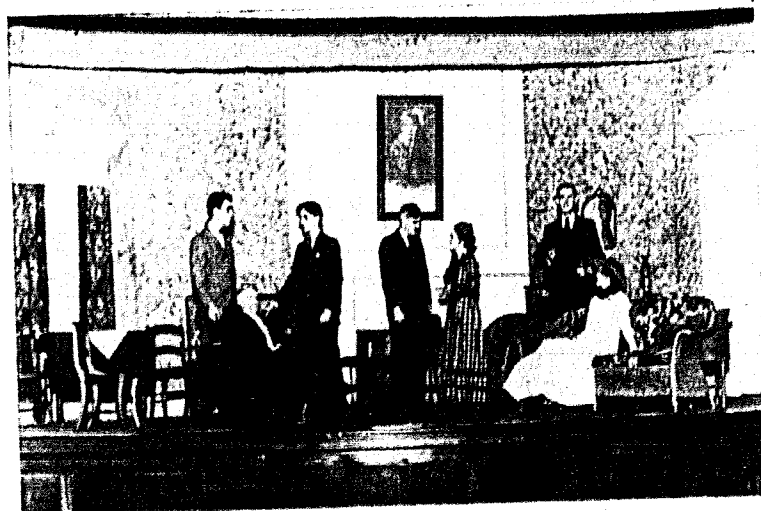
Mr. Frederick Ritter.....	JULIUS RATHMANN
Mr. Huxley Hossefrosse.....	PAUL KIRKPATRICK
Mr. Spindler.....	WILLIAM WATERS
Mr. Ralph Twiller.....	GEORGE WHITE
Teddy Spearing.....	GRANT ANDERSON
Mr. Stage Manager.....	GEORGE HAMMON
Mrs. Paula Ritters.....	ESTHER MAY WRIGHT
Mrs. J. Duro Pompinelli.....	GEORGIA BESSIE BOWMAN
Mrs. Nellie Fell.....	LUCILLE HALL
Miss Florence McCrickett.....	RAMONA TRIPP
Mrs. Clara Sheppard.....	MARY MARGARET WESTBROOK
Jenny.....	FERN EUBANKS

"For One Night Only" Cast

Prof. Goldwhinney.....	GEORGE WHITE
Mrs. Goldwhinney.....	BETTY MCGONIGLE
Dr. Newcond.....	WILLIAM WATERS
Mary Anna Newcond.....	MARY MARGARET WESTBROOK
Jack Harking.....	JUDSON PALMER
Mr. Harkins.....	TALTON PARKER
Rosa.....	ESTELLE SLATER
Paula Goldwhinney.....	MARY BETH SHOUBE
Sparton Spurgis Spotts.....	L. M. PROCTOR

"House Beautiful" Cast

Guy Staton.....	DONALD DUNCAN
Elbert Baxter.....	GEORGE HAMMON
Archibald Davis.....	JUDSON PALMER



A scene from
"House Beautiful"

Jennifer Davis.....	VIRGINIA D. RICE
Hulda.....	FERN EUBANKS
Nina Baxter.....	MARGARET MILLER
Dr. Brink.....	GEORGE WHITE
Sam Dreyer.....	WILLIAM WATERS
Martha Wiley.....	BETTY PARKER
Richard Davis.....	L. M. PROCTOR
Vivian Davis.....	MARGARET MCDUGALL

The plays have been well received by Liberty audiences. "Torchbearers" was a high comedy enacted with skill by the members of the Dramatic Club from which the cast is chosen. "House Beautiful" by Channing Pollock was the dramatic success of the year both from the standpoint of production and presentation. This play reached a peak for the actors of the college because the play was difficult for those on the amateur stage. "For One Night Only," the farce that was presented in the late spring, was an experiment with regard to short time practice and proved very successful. The Dramatic Club and Department should be congratulated on their productions of this year.

During the forensic season of 1933-34, William Jewell College has been represented by thirteen students in intercollegiate competition. Twelve have participated in debate and four have entered oratorical and extempore contests. William Jewell has had sixty intercollegiate debates with colleges and universities representing fourteen different states. Twenty-nine of these debates were for judges' decisions; of these William Jewell won twenty-one. The states represented are: Kansas, Nebraska, Iowa, Ohio, Illinois, South Dakota, North Dakota, California, Minnesota, Tennessee, Kentucky, Mississippi, Michigan, and Missouri.

DEBATE

December 11, 1933

"That the United States should adopt the Essential Features of the British System of Radio-Control."

Burch—Vaughn (Neg.) vs. University of Missouri. No decision.

"That the Powers of the President of the United States should be Substantially Increased as a Setled Policy." This proposition was debated nationally by Pi Kappa Delta schools; it was used in all debates except where otherwise indicated.

McGonigle—Bowman (Aff.) vs. University of Missouri. No decision.

January 16, 1934—At Kansas City, Kansas
Cope—Hintz—(Aff.) vs. Junior College. No decision.

Bowers—Magruder (Neg.) vs. Junior College
No decision.

January 25, 1934—At Emporia, Kansas
Burch, Bowman, Cope, Rathmann, Davidson, on Aff., met Emporia Teachers [three debates] and College of Emporia; on Neg., Emporia Teachers and College of Emporia. No decisions.

January 31, 1934—At Kansas City, Missouri, before Metro Club.

Rathmann—Davidson [Neg.] vs. Rockhurst College. Won 2-1.

February 1, 1934

Cope—Davidson [Aff.] vs. Drake University. Won, critic.

February 3, 1934—Northwest Mo. Teachers College Tournament, Maryville; McGonigle, Vaughn, Bowers, Cope, Magruder, on Aff. met Washburn, Northeast Mo. Teachers, and Peru Teachers; on

Neg. met Doane, Iowa Central, and Hastings. No decisions.

February 6, 1934—At Parkville, Missouri
Rathmann—Magruder [Aff.] vs. Park College. No decision.

February 7, 1934

Cope—Davidson [Aff.] vs. Rockhurst College. Won 3-0.

Cope—Magruder [Aff.] vs. Wentworth Military Academy. Won, critic.

February 8, 1934—At Lexington, Missouri

Bowers—Magruder [Neg.] vs. Wentworth Military Academy. Lost 2-1.

February 13, 1934

Burch—Bowman [Neg.] vs. Park College. No decision.

Amery—Hintz [Neg.] vs. Peru Teachers, Nebraska. No decision.

February 16-17—Missouri College and University Tournament, Missouri Valley College, Marshall, Missouri

Cope—Magruder, on Aff. met Principia [lost]; Westminster [lost]; on Neg., met Westminster [lost] and S. E. Mo. Teachers, (won).

Women's Debate: Burch-Bowman, on the Aff. met N. E. Mo. Teachers (won), Central (won), Culver-Stockton (won), Missouri Valley (won), on the Neg., met S. E. Mo. Teachers [won], S. W. Mo. Teachers [won], and Missouri Valley (won). Thus, by winning seven straight debates, did Mary Belle Burch and Georgia Bowman bring to their alma mater the first championship ever won by William Jewell women in intercollegiate contests.

February 23, 1934

Burch-Bowman (Aff.) vs. Iowa State College. No decision.

"That the Influence of Present-day Fraternity and Sorority Organization is Detrimental to American Life."

Davidson—Magruder (Neg.) vs. Iowa State College. No decision.

February 23-24, 1934—At Kansas City, Missouri, Kansas-Missouri Tournament, Kansas City School of Law.

Burch, McGonigle, Vaughn, Amery, Cope,



UNPHOTOGRAPHED

- Amery, Joe—(Debate and Oratory)
- Bell, Keller—(Debate)
- Bowers, James—(Debate)
- Burch, Mary Belle—(Debate)
- Burkhardt, Annajane—(Debate and Oratory)
- Christian, Helen—(Oratory)
- Cope, James—(Debate and Oratory)
- Crockett, John—(Debate)
- McGonigle, Betty—(Debate)
- Whaley, Nellie, Mrs.—(Oratory)

Crockett, Davidson, Magruder, on Aff., met S. E. Mo. Teachers (2), Emporia Teachers, Univ. of Wichita; on the Neg., K. C. School of Law, Baker Univ., Ottawa Univ., Univ. of Wichita.
 March 27, 1934

Davidson-Cope (Neg.) vs. Kansas City School of Law. Won, critic.
 April 2-6, 1934—National Tournament, Pi Kappa Delta, Lexington Kentucky.

Women's Debate: Burch-Bowman, on the Aff., met College of Pacific, Calif. (lost); Jamestown College, N. Dak. (won); Dakota Wesleyan, S. Dak. (won); on the Neg., Milligan, Tenn. (won); Transylvania Univ. (lost).

MAGRUDER
 BECK
 UTTER

BOWMAN
 DAVIDSON
 ATWOOD

HINTZ
 VAUGHN
 REPPENHAGEN

THOMPSON
 RATHMANN
 TRIPP

Men's Debates: Cope-Davidson, on the Aff., met Kent College, Ohio (won); Hope College, Mich. (lost); Millsaps College, Miss. (won); Macalester College, Minn. (lost); on the Neg., Simpson College, Iowa [won]; Carthage College, Ill. [won]; Illinois Wesleyan [won].

April 17, 1934—At North Kansas City, Mo., before Chamber of Commerce Cope-Davidson [Neg.] vs. Park College. No decision.

ORATORY

December 8, 1933.—At Jefferson City, Missouri, James Davidson—State Peace Oratorical Contest.

March 2, 1934—At Drury College

Georgia Bowman—Missouri State Oratorical Contest—Second place.

April 2-6, 1934—National Tournament, Pi Kappa Delta, Lexington, Ky.

Women's Oratory: Ramona Tripp, Semi-finalist.

Women's Extemp.: Georgia Bowman, Finalist. Sixth place out of sixty.

Men's Extemp.: Jim Cope, Preliminaries.

Pi Kappa Delta

Jewel of Key

1. Amery, Joe Ruby
2. Beck, Burton Ruby
3. Bowers, James Ruby
4. Bowman, Georgia B. Diamond (In two orders) (Chapter President and Vice-Governor of Missouri Province.)
5. Burch, Mary Belle Pearl
6. Cope, James C. Pearl (In two orders)
7. Davidson, James Emerald (In two orders) (Chapter Vice-President)
8. Duncan, Donald Ruby
9. Hensley, Clark Ruby
10. Hintz, August Emerald (Chapter Secretary-Treasurer)
11. Magruder, N. Burnett Pearl
12. McGonigle, Betty Ruby
13. Rathmann, Julius C. Ruby
14. Tripp, Romona Ruby
15. Vaughn, Louise Emerald

MEANING OF JEWELS:

- RUBY—FRATERNITY
- PEARL—PROFICIENCY
- EMERALD—HONOR
- DIAMOND—SPECIAL DISTINCTION

FACULTY MEMBERS:

- P. CASPAR HARVEY
- JOHN E. DAVIS
- W. PREWITT EWING—Coach and Third National Vice-President of Pi Kappa Delta.

The William Jewell College chapter of Pi Kappa Delta is the Missouri Delta chapter. It is in the Province of Missouri. Pi Kappa Delta is the largest honorary forensic society in America; it has 148 chapters in 40 states and Puerto Rico.

BOWMAN
 HENSLEY

HINTZ
 DAVIDSON

BECK
 VAUGHN

DUNCAN





DAWSON

SUMMERS

BOLLINGER

HAGOOD

LONG

FARRIS

Aeons

It is difficult to explain the influence or the manner in which the Aeons accomplish things. Every movement of the Aeons is clothed in as much secrecy as the Hebrew inscriptions on the black arm-bands that appear on the arms of these seven prominent Juniors. The Junior men are selected as outstanding leaders in their class and worthy of distinction in carrying on in the best interest of William Jewell. The duties or tasks of the Aeons are as secretive as the organization and the accomplishments are never known but

the satisfaction that they have served the College is the only reward.

The membership is limited to seven Junior men. The members of 1933 and 1934 are: Wilfred Dawson, Bruce Summers, Robert Bollinger, Hurley Hagood, Earl Long, and James Farris. The members of the year before were: Ben Clark, Frank Millen, William Watson, William Roark, Edward Sharp, Wilbur Hall, and Whitney Jansen.

Little is known of the organization other than the meetings are once a month and the pins are the crossed keys.

Panaegis

Panaegis, the Women's Senior honorary society was founded in 1928. Its membership is composed of the seven women of the Junior class who are the feminine leaders.

The members for the year 1933 and 1934 are: Alice Per Lee, Esther May Wright, Georgia Bes-sie Bowman, Vera Hume, Edna May Ennis, and Ramona Tripp. The members for the year before were: Mildred Bruner, Sarah Margaret Brammer, Grace Morrison, Gertrude Bell, and Helen Ennis.

One of the many mysteries that surrounds this secret society is the founder and the exact time it was founded. It is only known that the same day the Aeons were tapped in the year 1928

there appeared the new members of the Women's society. The reason that the Panaegis society cannot boast of a long and detailed history is due to the fact that women have only been allowed to the portals of the institution in the last few years.

A few of the activities of the society are known: Professor Harvey is the faculty advisor of the organization, the Panaegis pin is a gold shield with the picture of a Greek woman with the inscription "Panaegis" written across the top of the shield. The common cause of the society is "to serve the best interests of women in William Jewell College." Their accomplishments are never revealed but the reward is in the deed itself.

PER LEE

WRIGHT

BOWMAN

HUME

ENNIS

TRIPP





Sigma Tau Delta

The Mu Beta chapter of Sigma Tau Delta was installed in William Jewell in 1928. Until that time the writer's club was known as the Scribbler's Club and had been founded by Dr. Fruit. In 1932 Professor Harvey had sponsored a club to those interested in creative writing and maintaining a certain scholastic standard.

The regular meetings are held once a month where the works of the members are read and discussed. Special meetings this year were a Formal Dinner Party at the Kappa Alpha House, and a birthday dinner for "Daddy" Fruit at the home of Professor Harvey after which poems and prose written to Dr. Fruit were read. Every two years the Mu Beta chapter

publishes a book of poetry sponsored by the local chapter but not entirely written by the members. In 1931 Sigma Tau Delta published the book "Ghost Wind" and in 1933 published the book "Symbols." The contributors who are in school at the present time are: Ramona Tripp, Georgia Bessie Bowman, Dorothy Truex, Lucille Hall, Esther May Wright, Bernita Albright and Dorothy Donaldson. Mrs. Victoria Adelaide Harvey was also a contributor and an important person in the club. Members of the faculty who had poems published were Miss Virginia D. Rice, Professor Ewing, and Professor P. Caspar Harvey.

The active student members of this year are: Georgia Bessie Bowman, Dorothy Donaldson, Paul Thompson, Ramona Tripp, Franceil Willis, Marcus Milam, and James Farris. The officers were: Georgia Bowman, President, Marcus Milam, Secretary.

THOMPSON
BOWMAN

WILLIS
FARRIS
TRIPP



PREWITT EWING
JOHN PHELPS FRUIT

VIRGINIA D. RICE
PAUL CASPAR HARVEY

Alpha Psi Omega

The Honorary Dramatics fraternity, Alpha Psi Omega, was installed on the William Jewell campus in September of 1932. The meetings are monthly at the homes of the members where plays and dramatics are discussed by the members.

The officers for the past year were: Georgia Bessie Bowman, President; Romona Tripp, Vice-President; Lucille Hall, Secretary; and Arnold

Fenner, Business Manager. Miss Rice acts as Sponsor and as Director for the projects of the fraternity.

Alpha Psi Omega gives and acts as advisor to the plays that are given by the school. It has selected as the next Dramatic problem the conducting of a Play Tournament which will be held in the near future.

LENORA ATWOOD
ROMONA TRIPP

DONALD DUNCAN
BURTON BECK

ESTHER MAY WRIGHT
LUCILLE HALL





HERBERT MASTERS

CHESTER COEN

BERNARD FIGHTMASTER

CYRUS ALLEN

WILLIAM DAVIS

RICHARD HILTON

Sigma Pi Sigma

The Sigma Pi Sigma fraternity is a National Honorary Physics fraternity whose purpose is to promote Physics and fill the needed desire for association and expression among the advanced Physics students. It meets bi-monthly in its newly equipped chapter room in Marston Science Hall.

The officers for the past year were: President, Herbert Masters; Vice-President, Bernard Fightmaster; Secretary and Treasurer, Chester Coen.

The faculty members are: Professor John Davis, Dr. Edson, and Professor Joseph Van Trump.

Through the past year the organization has sponsored a cosmic ray demonstration by Mr. Cunningham from the University of Kansas. Several field trips have been taken to the Television School in the Kansas City Power and Light Building and also to the Power Plant of the Kansas City Power Company.

VANTRUMP

DAVIS



GEORGE F. WEIDA

Sponsor

DR. FRANK G. EDSON

Sponsor

Theta Chi Delta

Theta Chi Delta is a National Honorary Chemistry fraternity. This chapter was installed at William Jewell College in 1931. The purpose of the fraternity is to promote an interest in advanced chemistry.

The officers for this past year were: President, James Trabue; Vice-President, Wilson Brown; Treasurer, William Sutton; Secretary, Carl Gaines. The sponsors are Dr. Weida and Dr. Edson.

The meetings of the fraternity are every month and at each meeting speakers form a part of the program. A speaker from the Chemical Department of Cocks Paint Company was one of the speakers. The group has planned a trip to the Kansas City Power and Light Building.

The fraternity is interested in advanced and research chemistry while lending helpful encouragement to its members.

BROWN

TRABUE

GAINES

COOPER



Beta Beta Beta Beta Lambda



WILSON BROWN
CARL GAINES, *Historian*
FORREST YOUNG



EVERETT JOCHUM
CLOYD MUCHMORE
HENRY BAUMAN



MARVIN UTTER, *Vice President*
GLENN WALSER
ROBERT BOLLINGER, *President*



MILLCENT ADAMS, *President*
LOUISE VAUGHN, *Secretary-Treasurer*

UNPHOTOGRAPHED

ROGER BYLER, *Secretary*
PAUL DOUGLAS

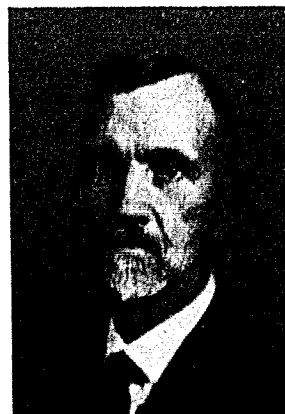
Associate Members

JAMES SMITH
WILLIAM SUTTON

Honorary Members

C. S. HANN, *Professor of Biology at
Kansas City Western Dental Col-
lege*

BESSIE GILLETT
MARY KEETCH
SHIRLEY ELLEN VAWTER



DR. J. C. ELMORE
Sponsor of Beta Beta Beta

Beta Beta Beta is the Men's National Honorary Biology Fraternity and was installed at William Jewell College in 1927. The officers for the past year were: President, Robert Bollinger; Vice-President, Marvin Utter; Secretary, Carl Gaines; Treasurer, Roger Byler. Dr. J. C. Elmore is the Sponsor of the group and the monthly meetings are held at the home of Dr. Elmore.

Beta Lambda is the Women's Honorary Biology Club. The Sponsor is Miss Helen Churchill.

The Scout Legion

The William Jewell Scout Legion, an honorary organization of former Boy Scouts, was formed at the College in 1932. Membership is limited to present members or former members of the national Boy Scout movement. The officers of the Legion for this year were: Dr. H. I. Hester, Dean Moon, and Professor Davis, faculty advisors; C. W. Page, Commander; Ralph Cooper, Lieutenant Commander; Grant Anderson, Yeoman; Donato Ramirez, Treasurer; Edwin Brady, Sergeant-at-Arms.

The purpose of the organization is to be of service to the College, to the student body, and to the members of the group. Their interest is also in the Boy Scout work in the city of Liberty, where the members take an active part in the training of the youth of the city.



DR. H. I. HESTER

UNPHOTOGRAPHED

GEORGE AULL
LEON BECK
DALE BOGARD
JOHN CRUTCHFIELD
LINDEN MADDOX
GEORGE WHITE

OZ QUICK
CIRO RAMIREZ
HOWARD RHODES
WILLIAM SUTTON
MARVIN UTTER

MEMBERSHIP

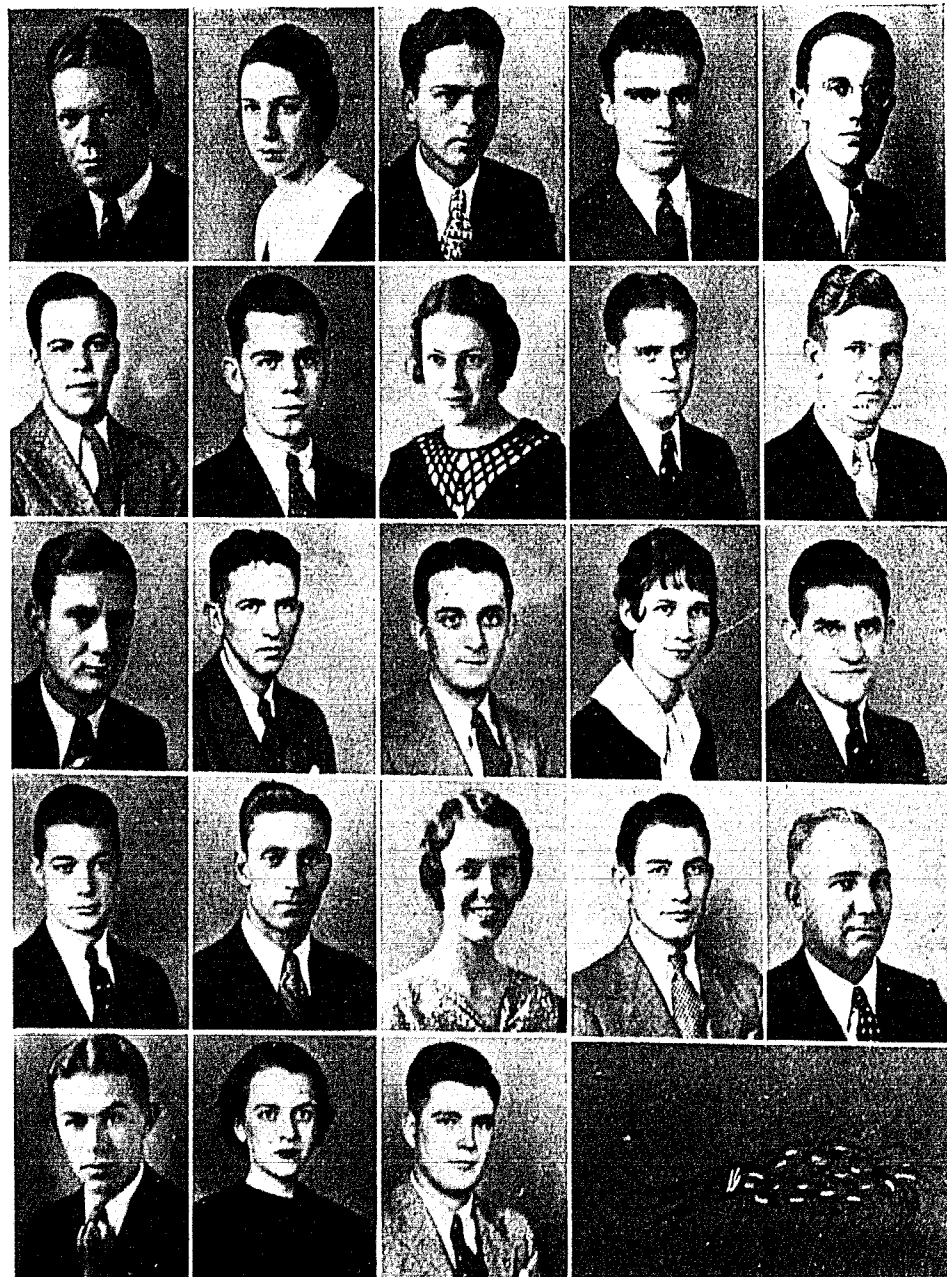
JACK JENNINGS
GILBERT REYNOLDS
WILLIAM RICHARDS
WALTER SMILEY

GEORGE BENSON
BUPORD FORDHAM
W. R. MARQUETTE
GRANT ANDERSON

LEE LONG
RALPH COOPER
RICHARD HILTON
HURLEY HAGOOD

EDWIN BRADY
DONATO RAMIREZ
C. W. PAGE
HARRY TROTTER





MEMBERSHIP

FARRIS
DUNN
CRUTCHFIELD
SUMMERS
JARVIS

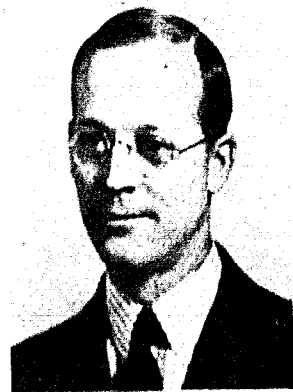
DAVIS
TURPIN
HUME
LONG
OWEN

REYNOLDS
THOMPSON
RATHMANN
BELLES
BECK, B.

BECK, F.
SUTHERLAND
PER LEE
MADDOX
BITTLE

WHITE
ENNIS
COOPER

International Relations Club



DR. HOLT SMITH

The International Relations Club is interested in international problems and especially the international affairs of the United States. The Club meets once a month and the discussions are of timely interest to the members. It has been through the sponsorship of the International Club that many interesting speakers have been on the "Hill" this last year.

The officers for the past year were: President, Bruce Summers; Vice-President, Frank Beck; Secretary, Julius Rathmann; Treasurer, Earl Long. Dr. W. Holt Smith has acted as advisor to the group. Several of the members attended the 1934 Convention at Grinnell, Iowa.

Ministerial Group

The Ministerial Group is one of the oldest and most influential groups on the Campus. The present Group was formed in 1923; before that time the organization was under a different name. The officers for this year were: Grant Ander-

son, President; Clark Hensley, Vice-President; John Godfrey, Secretary and Treasurer. Through the cooperation of the members it has been possible that these officers have had a most successful year.

MEMBERSHIP

HAMMON
LONG
CHRISTIAN
BITTLE
DUNCAN

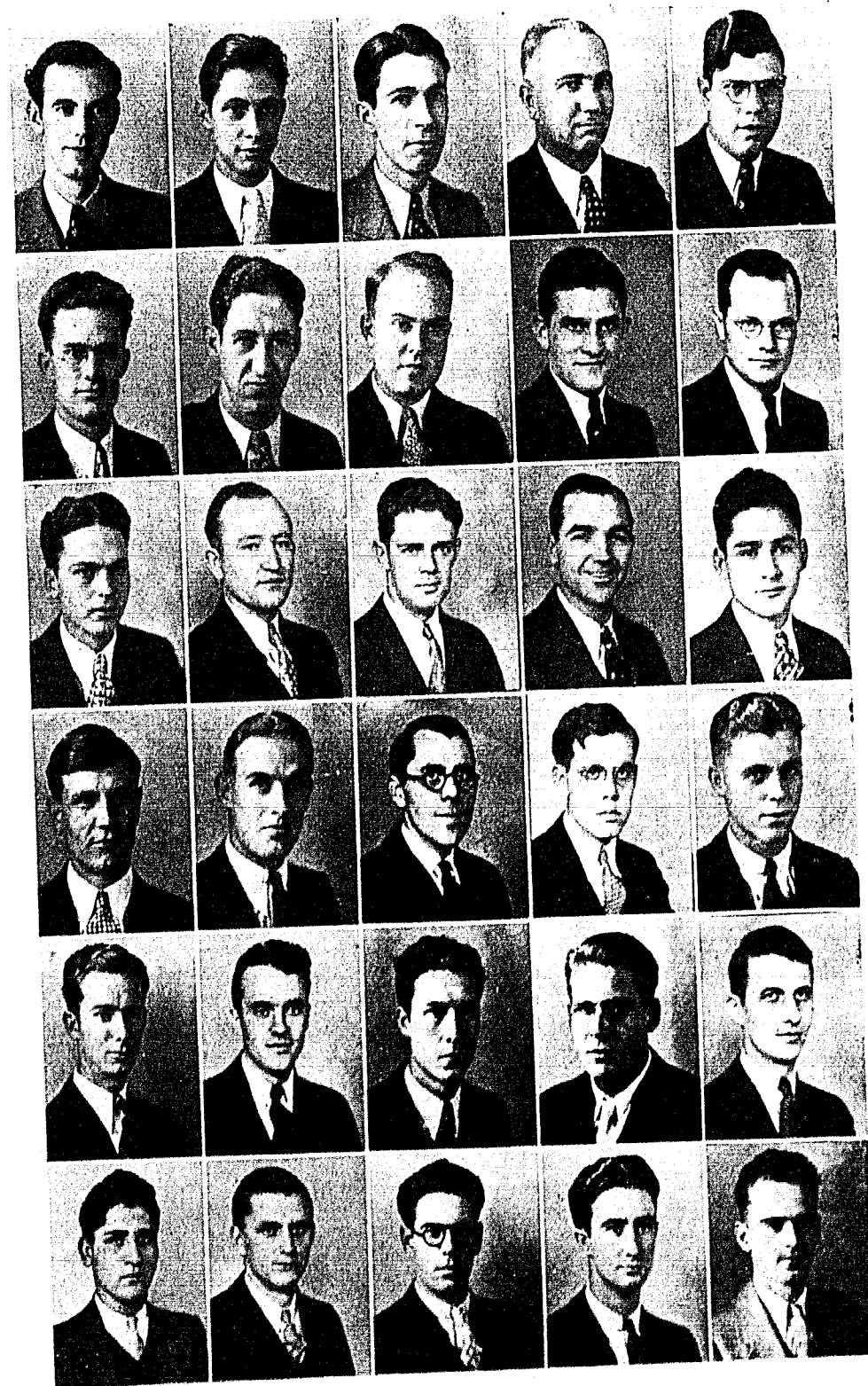
KIRCHNER
HUNT
REPPENHAGEN
BECK
PIELSTICK

CRUTCHFIELD
SMITH
NORRIS
MEDLIN
D. RAMIREZ

HENSLEY
HYATT
YOUNG
WEBER
QUICK

UTTER
WILLIAMS
FOLEY
WHISTLER
ANDERSON

C. RAMIREZ
THOMPSON
WOOD
MOOREHEAD
JENNINGS





The Student Volunteer Band

"The Evangelization of the World in This Generation" is the motto of the Student Volunteer Movement for Foreign Missions. The movement originated at Mount Hermon, Massachusetts in 1886 at an International Christian Conference. The purpose of the group is to make the student realize the responsibility of the missionary field if he is at home or on the foreign field.

The present organization is an old group and has been active for many years on the campus, and through the inspiration and efforts of the Volunteer Band much constructive work has been completed by those doing missionary work on the foreign field and those at home.

The membership is open to any student who is

interested in giving his services to any form of Christian work. It is through this great appeal to the students that the organization has been so successful and continues to be so.

The officers for the past year were: Millicent Adams, President; Burnett Magruder, Vice-president; Margaret Davidson, Secretary-treasurer; George Hammon, Chorister; Frances McGraw, Pianist, Marguerite Mullins; Reporter, Mrs. Don Pielstick and LeRoy Pratt, Missions. The programs were planned by Burton Beck, Margaret Bailey, and Hazel Marie Hale. Marvin Pitney, Lowell Sodeman and Roger Byler supervised the deputation work.

Y. W. A.

Y. W. A. of the Women's Missionary Union of the Southern Baptist Convention was organized on this campus in 1924. The purpose of the organization is to prepare and develop the girls for Christian Womanhood. The organization takes an active part in all religious problems and is an important factor in the missionary work on the campus. The organization has as one of its purposes the sponsoring of a missionary school for one week each year.

The officers for the past year were: President, Frances McGraw; Vice-President, Alice Hockett; Secretary, Dorothy Truex; Treasurer, Hazel Marie Hale. Mrs. G. A. McWilliams is the Sponsor, and the meetings are held at her lovely home. The regular meetings are held twice a month. Membership is open to all girls who have an interest in the missionary work.



HOCKETT	HALE
McGRAW	TRUEX
YATES	HALL
WRIGHT	HALEY

Y. W. C. A.

The Young Women's Christian Association was organized on this campus in 1924, and in 1927 was made a member of the National Organization. The meetings are held once each month which are usually at the home of Mrs. Herget. Here on Sunday afternoon the girls gather for a social meeting and often have interesting speakers; then tea is served by the gracious hostess. The regular business meetings are held at the homes of the various members in the afternoon.

The officers for the year were: Esther Mae Wright the first part of the year was President; Dorothy Donaldson, President the latter half of the year; Bernita Albright, Treasurer; Margaret McDougall, Vice-president; Nadine Haley, Secretary.

The organization sponsored several projects this year. It was through the members of Y. W. C. A. that the first School "Mixer" was such a success.



BOWMAN
BURCH
ASH

ANDERSON
WILLIS
TRIPP

The Student

THE STAFF

EDITOR.....ROBERT LYON
 ASSOCIATE EDITOR.....GILBERT REYNOLDS
 NEWS EDITOR.....ELIAS HUZAR
 SOCIETY EDITOR.....DOROTHY DONALDSON
 SPORTS EDITOR.....HURLEY HAGOOD
 LITERARY EDITOR.....RAMONA TRIPP
 ALUMNI CONTACT EDITOR.....MARY BELLE BURCH
 CONTRIBUTING EDITOR.....CARL RATHMANN
 CONTRIBUTING EDITOR.....RUSSELL ASH
 CONTRIBUTING EDITOR.....LOWELL SMITH
 CONTRIBUTING EDITOR.....ELSE BYRNS

During the first part of the year Bernita Albright was the Editor of the *Student* and Robert Lyon was Editor the last part of the year.

This year's publication has been very successful in more ways than one. It has created public opinion so that certain things have been accomplished; the editorials have been frank and constructive; and the paper itself has set a peak in student journalism.

The *Student* has always maintained an influential position in the expression of the students, and it is in this paper that they may give expression to their ideas and literary talent.

The *Student* has been financially managed by The William Jewell Press for the past two years.

As usual near the first of April the *Yellow Student* was published. It is one of the traditional features of the "Hill" and is enjoyed by everyone, even those whose names appear.

The entire staff should be complimented on the fine piece of work they accomplished in their paper.

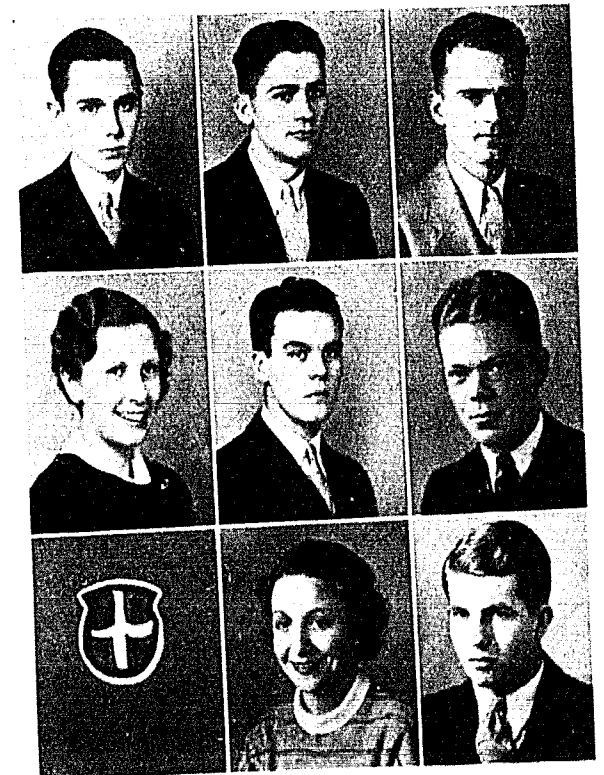


ROBERT LYON
Editor

The Tatler

THE STAFF

MANAGING EDITOR.....DONALD DUNCAN
 ACTING EDITOR.....LUCILLE HALL
 ASSOCIATE EDITOR.....MARCUS MILAM
 ACTIVITIES.....BERRY WALL STANLEY
 ATHLETICS.....HURLEY HAGOOD
 HUMOR.....PAUL THOMPSON
 FEATURES.....JAMES FARRIS
 ART EDITOR.....INEZ YATES
 PHOTOGRAPHS.....JACK JENNINGS
 BUSINESS MANAGER.....JUDSON PALMER
 SECRETARY.....BERNADINE VIKE



STANLEY
VIKE

THOMPSON
PALMER
YATES

JENNINGS
FARRIS
HAGOOD

The 1934 *Tatler* is the result of the efforts of the *Tatler* Staff and The William Jewell Press.

We are one of the first to notice the mistakes, and we know that there are glaring ones, but before the criticism is too harsh we ask you to stop and consider the odds that the *Tatler* Staff had to work against this year. The lack of funds is

always a serious handicap and we have tried our best to overcome this in the best way we knew was possible. We wish to add that no one or any organization was intentionally slighted nor was there any conscious or prejudiced favoritism in the printed matter in the book.

This is not an apology for the *Tatler* for we feel there is nothing to apologize for, but we do want the students to understand the situation that has confronted us in the publication of this year-book.

We wish to thank the students for their cooperation and want them to feel that this *Tatler* belongs to them.



DONALD DUNCAN
Managing Editor

LUCILLE HALL
Acting Editor



DAVID GROSCH
Head of the Department of Music

Music

During the last few years the Music Department has been under the sole direction of Mr. David Grosch and it is to him the credit is due for the interest taken in the Music Department. The Glee Clubs and Band are under his direction. This year the Girls' Glee Club has been organized again and they have had a very successful year.

The William Jewell Band played at all the football games and took several road trips with the team. Through the help and cooperation of the Band was it possible that the "Redhots," the Girls' Pep Squad, was such a popular organization.

The Glee Clubs have given special programs and have appeared at other schools and churches. Special entertainment during chapel periods was furnished by the combined efforts of the Glee Clubs. As special appearances the two Clubs sang over the radio station KMBC. Mrs. E. L. Black is the accompanist for the department and she deserves the heart-felt thanks that she receives for her faithful and able assistance.

The Quartets for both boys and girls have been much in demand and have always been willing to give their services at a moment's notice. These two groups have made several trips other than those taken by the other members of the Club. The Quartets are among the most popular organizations, and in the trips they have taken to other schools have always been a great asset to the College.

During this past year other than his duties at William Jewell, Mr. Grosch has sung over the Columbia Broadcasting System from the station in Kansas City, KMBC. His singing and knowledge of music is authoritative and is recognized in music circles throughout the United States. Under the present circumstances the Music Department deserves credit for the advancement that has already been accomplished, and by the attitudes it is quite evident that this is only the beginning of a leading department in William Jewell College.

Beta Sigma Omicron

The Alpha Psi chapter of Beta Sigma Omicron was installed at William Jewell College in 1931. The sorority was founded at the University of Missouri in 1888. The colors are ruby and pink; the flowers are Killarney and Richmond roses.

The officers for this past year were Vera Hume, President; Thelma Offutt, Vice-President; Georgia Bessie Bowman, Treasurer; Vyra Alice Robinson, Secretary. Mrs. P. Caspar Harvey was the Sponsor of the sorority and she entertained them in her home many times during the year.

The sorority achieved the difficult attainment of combining active social duties with a successful scholastic record.

In early fall the pledges entertained the active chapter and guests at a masquerade in an old haunted house. Even though the music and costumes were gay, the flickering candles and creaky stairway created an adventurous spirit. In February they entertained with a St. Valentine's party.

The sorority has every reason to be proud of attainments during this last year.

MEMBERSHIP

THELMA LOU OFFUTT
LOUISE VAUGHN
EVELYN BURNLEY



VYRA ALICE ROBINSON
BERNADINE VIKE
BETTY MCGONIGLE



PAULINE SETTLE
DOROTHY WICKSTROM
VERA HUME



GEORGIA BESSIE BOWMAN
LENORE ATWOOD
ELLEN SWEANY





Sigma Rho

MEMBERSHIP

HAZEL MARIE HALE
 NADINE HALEY
 EMMA PAYNE
 CYRENA JENNINGS
 MARGARET BAILEY
 FRANCES MCGRAW
 ESTELLE SLATER
 MARGARET DAVIDSON

UNPHOTOGRAPHED

THELMA MORRIS
 MARY STONE
 MARGUERITE MULLINS
 VIOLA STURGES

The Sigma Rho sorority was founded on the William Jewell campus in 1925. The motto of the sorority is I Timothy 6:11. The flower is the pink rose, and the colors are rose and silver.

The officers for the past year were: Cyrena Jennings, President; Frances McGraw, Vice-President; Hazel Marie Hale, Treasurer; Marguerite Mullins, Secretary. Mrs. F. M. Derwacter is spon-

sor of the sorority and at her home many of the enjoyable gatherings are held.

In the early part of the school year the sorority held a "friendship" banquet at the home of Mrs. Derwacter; then there was a musical party at the home of one of the members, and one week-end party consisted of a slumber party at Melrose and a breakfast.

T. N. T.

The T. N. T. sorority was founded on the William Jewell campus in 1922. The colors are lavender and purple, while the flower is the violet.

The sorority found time from its other social activities to give four delightful parties. The St. Pat's Formal which is a tradition of the organization was one of the most successful of the parties.

The officers for the past year were: Elinor Rapson, President; Edna Mae Ennis, Vice-President; Virginia Wyble, Treasurer; Mildred Mason, Secretary; Alice Per Lee, Historian; Mrs. John Davis is the Sponsor of the group.

The Christmas "dorm" party and the Mother's Day banquet are events that are enjoyed by those who attend.

MEMBERSHIP

MILDRED MASON
 ELINOR RAPSON
 MAXINE KEIR
 MEDORA CRAWFORD
 RUTH COX
 LUCILLE HALL
 EDNA MAE ENNIS
 ALICE PER LEE
 MARY ANNA KOCH
 ELEANOR DAVIS
 INEZ YATES
 MARGARET MILLER
 MARY MARGARET WESTBROOK
 MARY BETH SHOUSE



UNPHOTOGRAPHED

MARY GARNETT BAIRD
 VIRGINIA WYBLE
 ALICE GARNER
 FLORA CURTIS
 SARAH HOWARD
 DOROTHY WOODS
 FRANCES HEINLEIN

Alpha Zeta Pi

MEMBERSHIP



PAUL KIRKPATRICK
 GEORGE HAMMON
 ARDATH HAMMOND
 BERNARD FIGHTMASTER
 CIRO RAMIREZ
 WALTER REPPENHAGEN
 LEON BECK
 PAUL SHARRAH

UNPHOTOGRAPHED

MILAN THOMPSON

LESLIE CHRISTIAN
 JOHN CRUTCHFIELD

MARVIN UTTER
 CLARK HENSLEY

EUGENE KIRCHNER
 DONATO RAMIREZ

WOODROW MCKEE

PETER MCPHEE
 ANDREW MOOREHEAD
 ROBERT HYATT
 GRANT ANDERSON
 JACK FOLEY
 DAVID APRA
 CLARK WHISTLER
 RALPH McELWAIN

The Alpha Zeta Pi fraternity was formed on the William Jewell campus in 1924 and since that time they have endeavored to live up to their motto that was chosen at that time, "To stir into a flame the gift of God within you."

The officers for this year were: President, Eugene Kirchner; Vice-President, Marvin Utter; Secretary, John Crutchfield; Treasurer, Woodrow McKee.

This past year the fraternity entertained with several evenings of enjoyment. The first party of this year was on January 26, and it was held in Excelsior Hall, and then in March they had a party in the Gymnasium.

The colors of the fraternity are blue and white; the flower is the lily of the valley. The members of this Christian organization have been an inspiration to other students and through this influence one of their objectives is gained.

Kappa Alpha

The Alpha Delta chapter of the Kappa Alpha was installed at William Jewell College in 1887. The colors of the fraternity are crimson and gold; the flowers are the magnolia bloom and the rose.

The officers for this successful year were President, Wilfred Dawson; Vice-President, George Hicks; Treasurer, Edwin Brady; Secretary, "Polly" Grant; Corresponding Secretary, George Koch. Mrs. Frank Winn has been the ever gracious

hostess who has greeted the guests at the Kappa Alpha House this past year.

The social activities of the K. A.'s. have been varied. One of the first parties of the year was a Tackey Party given by the pledges for the actives. A Winter Formal and a Spring Party completed this very delightful and entertaining plan with the exceptions of radio parties and dinners at the House. The Mothers' Tea was the traditional event which comes each year in May.

MEMBERSHIP

GLEN ALSAUGH
 DUDLEY DURHAM
 ROBERT JOHNSON

KENNETH NEAL
 CLAYTON KNIGHT
 GEORGE HICKS

HERMAN GRANT
 EDWIN BAYSE
 COLLINS HUFFT

BENJAMIN PERRY
 JAMES DAVIDSON
 EDWIN BRADY

WILFRED DAWSON
 CHARLES MOORE
 GEORGE KOCH





Sigma Nu

The Beta Xi chapter of the Sigma Nu fraternity was installed on the William Jewell campus in 1894. The colors of the fraternity are gold, black, and white, while the flower is the white rose.

The officers for the past year were: President, Robert Lyon; Vice-President, Kenneth Jeter; Treasurer, Harry Trotter; Secretary, Jim Cope.

Mrs. Fristoe was the House Mother and it was through her charming manner that there was such warm hospitality at the Sigma Nu House.

The school year was started by the traditional Sigma Nu hay-ride in the early Fall. This was the beginning of many pleasant social gatherings among which were radio parties and a Winter Formal.

MEMBERSHIP

HURLEY HAGOOD
SHAD MEDLIN
HARRY TROTTER

WILLIAM BROWNING
CARL JULIUS RATHMANN
DONALD PIGG

KENNETH JETER
CREAD MARRIOTT
ROBERT LYON

L. M. PROCTOR
JAMES COPE

EMMETT MURPHY
MANSEL HENNON

Kappa Sigma

The Alpha Omega chapter of the Kappa Sigma fraternity was installed on the William Jewell campus in 1897. The flower of the fraternity is the lily of the valley. The colors are scarlet, green, and white.

The officers for the past year were: President,

Lon Sutherland; Vice-President, Robert DeMasters; Second Vice-President, George White; Secretary, Melvin Thompson. Mrs. Vanlandingham is the House Mother and she is better known as "Mother Van". She is responsible for the gracious atmosphere that is always present.

MEMBERSHIP

GEORGE WHITE
LON SUTHERLAND
GILBERT REYNOLDS
PAUL THOMPSON

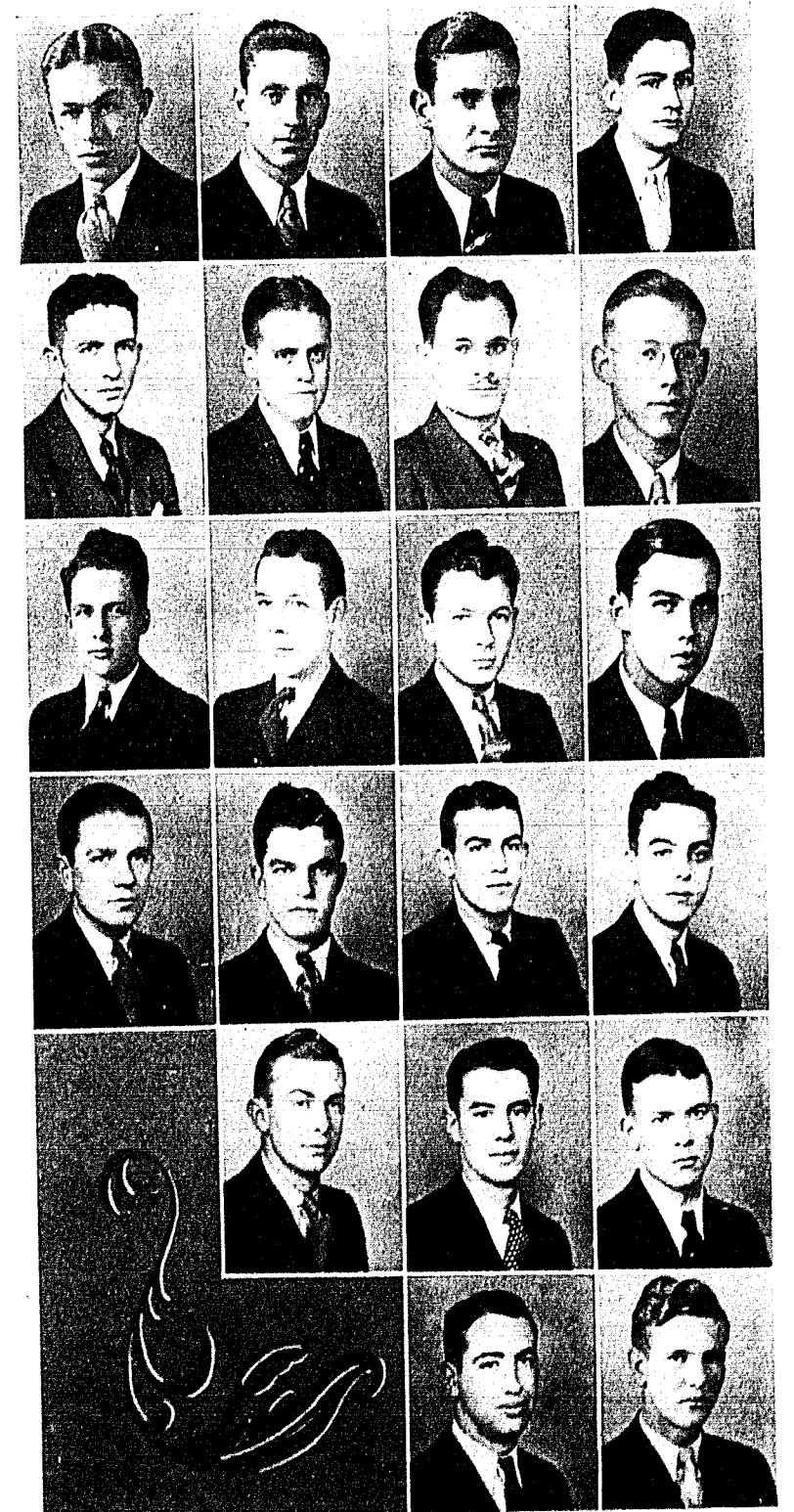
MELVIN THOMPSON
EARL LONG
HERBERT MASTERS
KELLER BELL

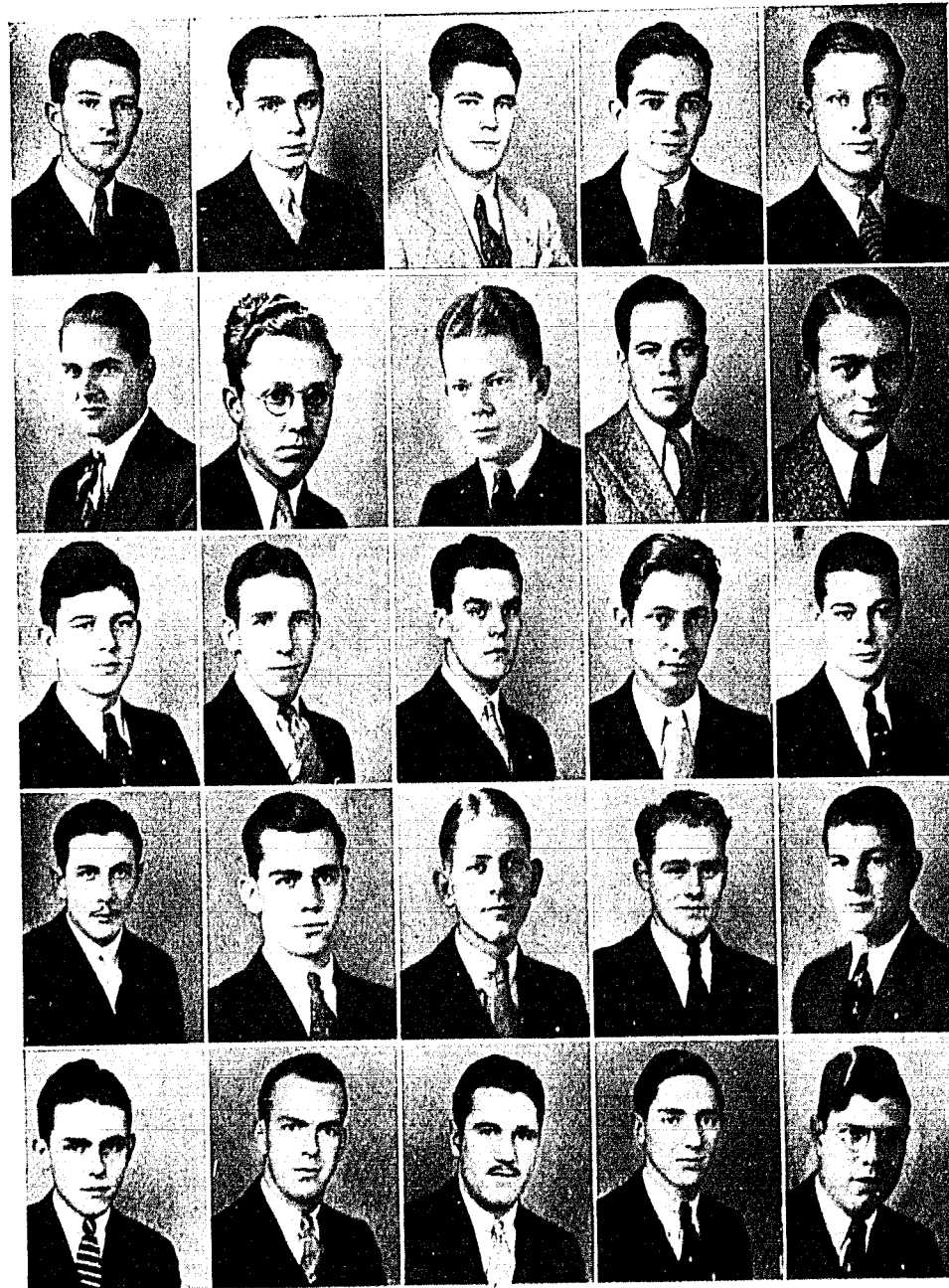
EDWARD McDONALD
JOE ALLEN MCCOMAS
KENNETH MARTI
TALTON PARKER

WILLIAM MANN
FRANK CHIRANE
RAY DEMASTERS
EDWARD BRANT

ROBERT DEMASTERS
H. A. ORMSBY
GLENN WALSER

RUSSELL HEMPHILL
WILLIAM OWEN





Phi Gamma Delta

The Zeta Phi chapter of Phi Gamma Delta fraternity was installed in William Jewell College in 1886. The color is purple and the flower is the purple clematis.

During this past year the officers of the fraternity were: President, James Farris; Vice President, William Davis; Treasurer, Frank Beck jr.; Secretary, Berry Wall Stanley; and Historian, Russell Ash.

This year the fraternity maintained a high scholastic average aside from the other activities. The annual Pig dinner, a tradition of the fraternity was held this Spring. Then several parties were given; a Barn Dance by the pledges for the actives and other guests, a Saint Valentine's party, and a Spring Formal completed the social activities for the year.

RALEIGH YOUNG
BERRY W. STANLEY
RALPH COOPER
DICK HILTON
RUSSELL ASH

WILLIAM DAVIS
WILLIAM WATERS
JAMES FARRIS
KIMZEY DAVIS
PAUL VINYARD

LANCE ELLIS
JAMES TRABUE
JUDSON PALMER
LEE LONG
FRANK BECK

EARL STAUFFER
HARRY TURPIN
GEORGE BAILEY
WILSON BROWN
EDGAR ARCHER

WILLIAM SCHAEFER
JOHN SEWARD
PAUL CROSE
GEORGE AULL
DONALD DUNCAN

Zeta Chi

The Zeta Chi fraternity was founded in 1916 at William Jewell College. The colors are blue and white; the flower is the white carnation.

The officers for the last year were Bruce Summers, President; Carl Gaines, Vice-President; Les-

lie Jarvis, Secretary; and Ward Wiley, Corresponding Secretary.

The Zeta Chi house was the background for many delightful radio parties. In the Spring they entertained with a Spring Formal.

MEMBERSHIP

CHESTER COEN
CYRUS ALLEN
PAUL MANSFIELD

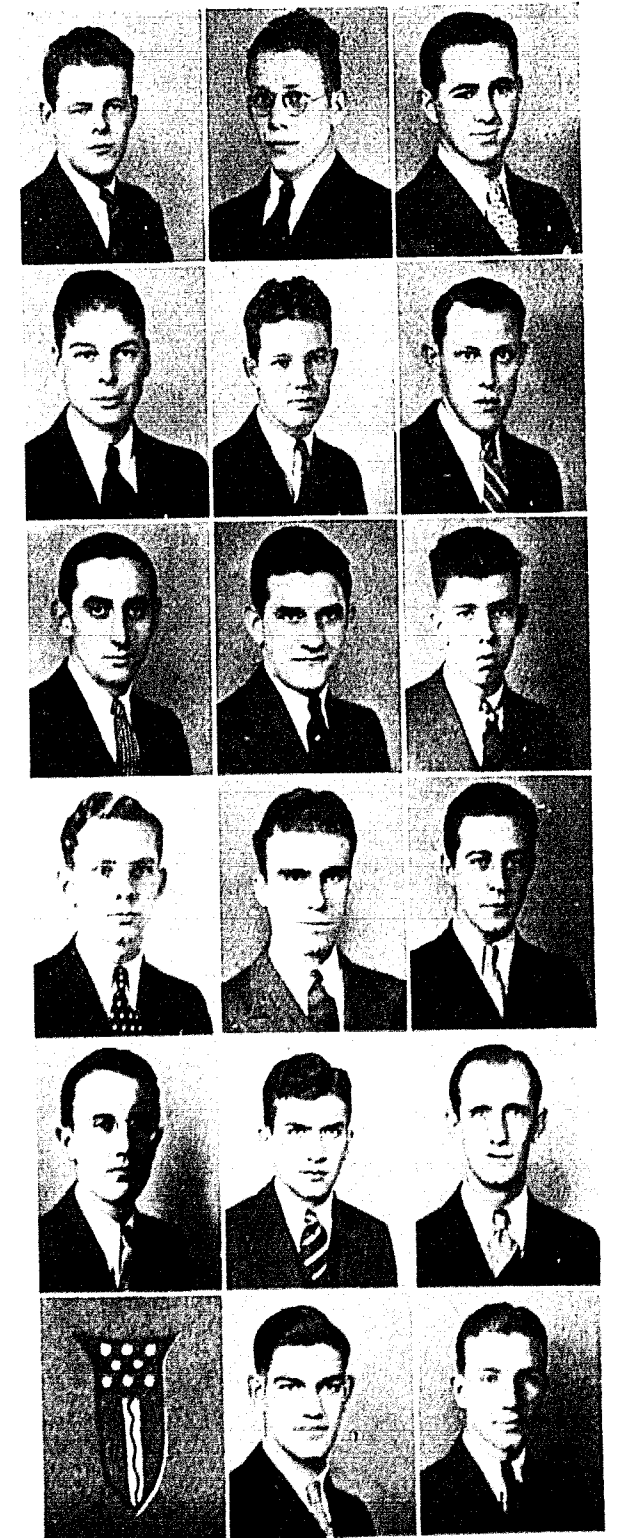
WILLIAM CARPENTER
CHARLES PAYNE
ROBERT BESSMER

HERBERT REALING
BURTON BECK
WALTER SMILEY

ROBERT BOLLINGER
BRUCE SUMMERS
LOWELL SMITH

LESLIE JARVIS
BERNARD BLAIN
WARD WILEY

RALPH CUMPTON
CARL GAINES





GEORGIA BESSIE BOWMAN

ELINOR RAPSON

VYRA ALICE ROBINSON

VERA HUME

EDNA MAE ENNIS

Pan-Hellenic Council

The Women's Pan-Hellenic Council was organized on William Jewell Campus in 1926 to help the relations between the two sororities. It is in this group that the respective policies of both sororities are determined. And it is through the efforts of the Council that relations between the two are harmonious.

The members of the Council are the president of each sorority and two other members of each. The presidency alternates from one year to the other between the presidents of the organizations.

The members for the last year were: Georgia Bessie Bowman, Vyra Alice Robinson, and Vera Hume, Beta Sigma Omicron members; Edna Mae Ennis, Elinor Rapson, and Virginia Wyble, T. N. T. members.

The Pan-Hellenic Council is one step toward an understanding between the sororities. The decisions of the group have proved wise and have shown the forethought that they have, which is necessary to the better understanding which they have achieved.

Interfraternity Council

The Interfraternity Council was organized in 1924 and is composed of two members from each of the fraternities. The purpose of the Interfraternity Council is to aid the relations between the respective fraternities and to achieve a cooperation between them that will prove satisfactory to all those concerned. Professor Davis and Professor Byrns are the faculty members that are on

the Interfraternity Council.

The officers for this past year were: President, Bruce Summers; Vice-President, Wilfred Dawson; Secretary, James Farris.

This group determines the policies by which all of them abide and it is through this hearty cooperation that the plan has been so very successful.

JAMES FARRIS
Phi Gamma Delta

GEORGE HICKS
Kappa Alpha

WILFRED DAWSON
Kappa Alpha

BRUCE SUMMERS
Zeta Chi

WILLIAM DAVIS
Phi Gamma Delta

ROBERT LYON
Sigma Nu

ROBERT BOLLINGER
Zeta Chi

MELVIN THOMPSON
Kappa Sigma

LON SUTHERLAND
Kappa Sigma

HARRY TROTTER
Sigma Nu



Sons of Rest

'Tis said that the Sons of Rest originated after Man was driven from the Garden of Eden and this spirit of that august body has ever been present with or without definite organization. The William Jewell chapter was formed by John Phelps Fruit in the last century and even though it has not been active until March, 1933, he has constantly reminded the members of their duties to this most ancient order.

This "onery" group has no aim or purpose, and to avoid everything other than rest is its main idea. The initiation covered several days of tobacco chewing and red bandannas to distinguish the members. The Sons of Rest provided the crowds at the basketball games with amusement when they had contests of skill and endurance with the ball and accomplished in a true Son of Rest fashion.

To keep from "flunking" is the only desire of the members, and the low moan of their yell is the pride of the order—

Rawbuck, Sawbuck, Malum Labor Est,
Work Never! Rest Ever! Sons of Rest.
A-M-E-N---

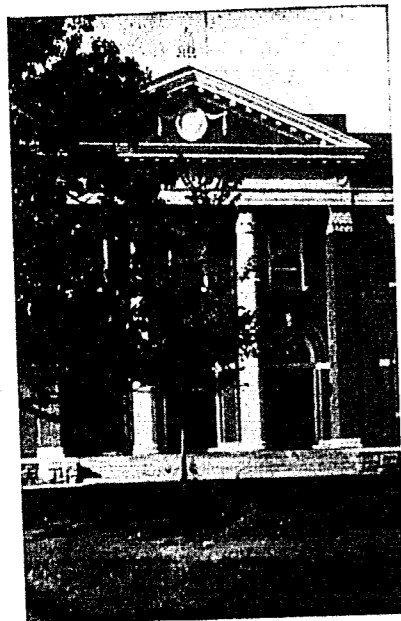
Top Row; Carter, Allen, Long, Murphy, Williams, Rhodes, Brady, Koch, Dawson, Farris, Beck, Ash, and Quick. Middle Row; Owen, Reynolds, Realing, Grant, Johnson, "Daddy" Fruit, Lyon, Muchmore, Trotter, Hagood, Rathmann, and Medlin. Bottom Row; White, Renshaw, Sutherland, Hicks, Turpin, Cope, and Moore.



DR. JOHN PHELPS FRUIT



Ladies Fair and Jesting



Queen
Vyra Alice Robinson

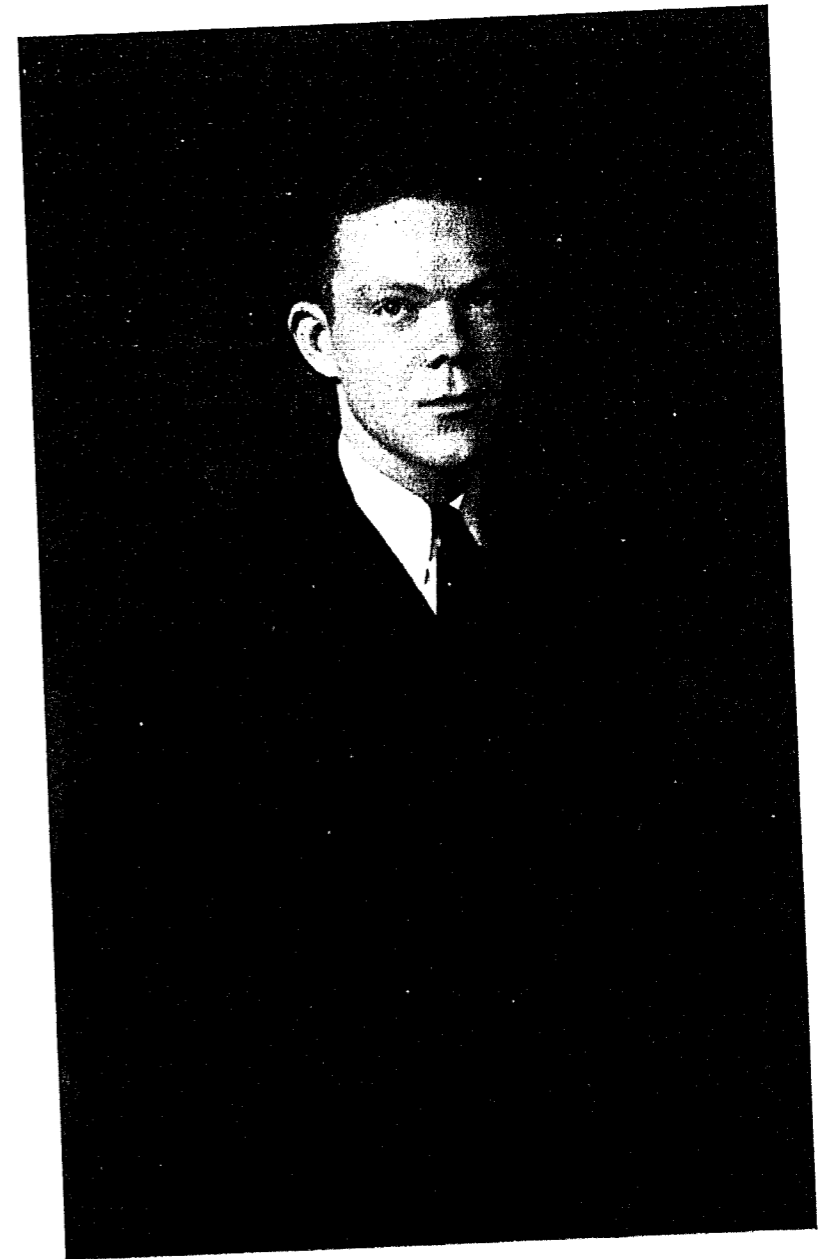




*Tatler Carnival
King and Queen*



Most Popular Girl
Mary Beth Shouse



Most Popular Man
James Farris

Calendar 1933-34

- Sept. 6. School opens. Registration amid shouts and confusion. Reception on the campus for the new students with the usual "reception" punch.
- Sept. 8. Rush week—need more be said?
- Sept. 13. Senior Proclamation—only temporary and just big words.
- Sept. 28. Snake dance and free movie—100 per cent attendance.
- Sept. 29. First football game here with Culver-Stockton.
- Sept. 29. Tatler Carnival with the crowning of the King and Queen.
- Oct. 6. Game with Ottawa—lots of pep and "college" life.
- Oct. 19. Freshman Revolt—the only thing accomplished for the discipline of the Freshman class.
- Oct. 30. First of the successful school parties. Everyone in masks—in Brown Gymnasium—quite a gay party.
- Nov. 3. The play, "Torchbearers", given by the Dramatic club.
- Nov. 11. Victory for Jewell over Baker. Home-Coming Day, floats, pep speeches and everything to help for the first victory from Baker for years.
- Nov. 17. Examinations—silent period socially.
- Dec. 4. New term.
- Dec. 6. "Ships Afloat" presented by the Misner players for the College.
- Dec. 11. First debate on the campus.
- Dec. 15. Holidays start for the Christmas vacation. Blank space—What happened is not known for the next few weeks.
- Jan. 2. School starts—nothing more, nothing less.
- Jan. 12. First Student Chapel—the sign that the New Deal is a reality.
- Jan. 24. Faculty grants the petition for the New Deal.
- Jan. 25. Tatler Revue with the selection of the Beauty Queens.
- Jan. 31. Election for the Editor of the *Student*—posters and all the trimmings.
- Feb. 2. The dramatic success for the year, "House Beautiful".
- Feb. 22. The George Washington party at New Ely—quite a social affair.
- Feb. 14. The "J" club initiation—the first sign of tradition—not even the cow made its appearance.
- Feb. 16. Girl's debate team captures first place in the State Championship—just another example.
- Mar. 7. Examinations again which seem to be a habit with the faculty.
- Mar. 10. Spring term.
Due to heavy snow there were very few activities.
- Mar. 21. The first day of Spring—only this happens every year at the same time—and then the same symptoms.
- April 13. Jewell won a track meet from Missouri Valley. It was Friday 13, but not a lot happened.
- April 18. "For One Night Only", play by the Dramatic Club.
- May 2. Senior Class Day—they had things as they wanted them.
- May 20. Elections—everyone hoped for the best.
- May 28. Alumni Day—We heard "How it was when I was in school".
- May 28. Senior play—their farewell.
- May 29. Commencement.
- May 30. Another habit of examinations.
- June 1. School is out.

Fall Fun

Yeah! Yeah!
Team! Down
in front!

Even the
Profs' daughters
know
about jelling
—did they
learn from
their fathers?

Could be
Romeo and
Juliet. Could
be, but it is
Thompson
and Vike.

Ramona
Madeline
Whittaker
Tripp.

Oh Yeah! —
—says Shaky.

Guess what
they are talk-
ing about.

Just plain
cramming be-
fore a test.

—so saying
Bill turns his
back on the
cameraman.

Nice study
of tonsils on
display at
most any
game.

They are
fooling—
the book isn't
lessons —
"Snappy Sto-
ries."





Can- did Cam- era

Human flies--
they have
been called in-
sects.

Camera--shy
Huzar--Polly
is modest too.

Oz in another
pose.

The only ac-
tual proof of
the snow.

The worried
brow of the
Editor in
April.



So saying--
Betty tells
Smith a thing
or so---

Were they
surprised?

Freshman
English
grades always
an interest to
all--

Who's Who

Press Shop---

Office Staff

Co-op

Library Staff

"Davy"

Mrs. Hester
and Mrs.
Brown

Mr. Bingham

Waiters at
New Ely.
Mrs. Stanley
and Miss Utz

C. W. A.





Jim Jelliers

Lazy Days

The Library is used for more than studying.

Cuddled on the Chapel steps — right out in day-light —

The three Stooges.

Kirkpatrick wrapped in his work.

Just before Chapel — any day.

It must be a joke. Is Georgia Bessie telling Bruce?

"Daddy" Fruit watches over the new flock of Sons of Rest.

The Sage of the Press.



Freshman Fever

It has been done by the best of them.

"How do I look?" "My dear I am a scream". You are telling us—

Promising crew—at one of the few inspections.

Why the dog? The Seniors are bad enough.

Fire in their eyes for the Freshman boys—

"But it isn't worth a dollar."

A few of the best showing how it is done.

Nightie, Night, boys—

Why the smile? — He must have known about the Discipline Committee.





Spring Sallies

Some scowl-- some smile as they come from Chapel.

"Tommie" surrounded by fair damsels.



That certain something is being discussed.

Old Glory

Profound discussion--



Some might call it wasted time--but--

Fancies change-- Spring or not.



Smile of victory the day after the bout.

Snap-py Side-lights

Just friends--

They toil not-- the *Student* staff, so friendly--

1:15

More worries of the Editor-- only the name changes as time goes on.

The Sea Hag-- and background.

'Tis Mae West and all the lads.

"Dad" lets 'em have it.

Must be funny.

Every day the same-- everyone must see everyone.





Silly Snoopings

The Cheer Leaders—draw your own conclusions.

Dirty work behind Si's back.

They "dish it out" at Melrose.

A nice quiet evening for the boys at New Ely.

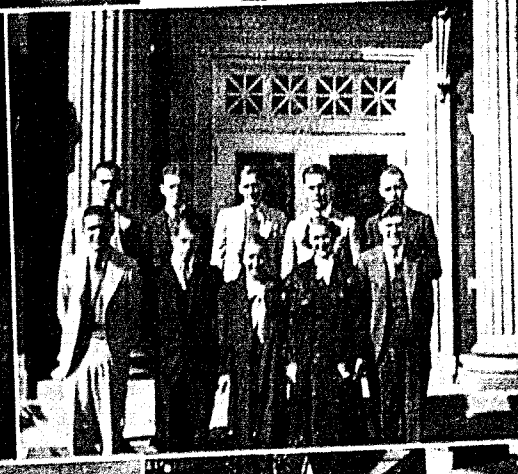
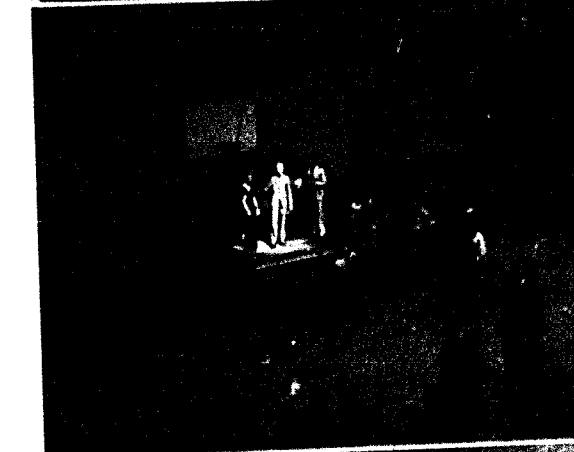
"Now what do you think, Bruce?"

The Coronation.

The Tutler staff in September—the reason for the smiles.

You would never know them—neither did anyone else.

The day Baker came to see us.



Advertising

McGinness, Druggist

Spalding Baseballs

Johnson's Candies

A. D. S. Supplies

Nyal Remedies

AnSCO Films

Phone 58

Liberty, Mo.

Aren't we all

"A gentleman is one who never insults anyone unintentionally."

Let's go riding

He—"I always make it a habit to kiss the girl I go out riding with."

She—"Well, that's not a bad riding habit."

It is the truth

"Italy has black shirts, Germany brown shirts, Irish blue shirts, and the American farmers have no shirts."

W. B. SCHNEIDER

MEAT COMPANY

Food Supplies of Quality

518-520 WALNUT STREET

KANSAS CITY, MO.

"The Home of

Aunt Kate's Sausage"

Compliments

T. M. JAMES AND SONS

CHINA COMPANY

Kansas City, Missouri

Wholesale

607 Wyandotte

Retail

1114 Grand Ave.

Compliments of a Friend

KANSAS CITY WESTERN DENTAL COLLEGE

10th and Troost Avenue

Kansas City, Missouri

Fifty-Third Session Convenes September 17, 1934

Summer Session Convenes June 4, 1934

Roy James Rinehart, D. D. S., F. A. C. D., Dean

NEW ISO VIS MOTOR OIL

THE ANTI SLUDGE MOTOR OIL AND SUPER FUEL GASOLINE

Standard Oil Company

Compliments of---

SAFEWAY STORES

1 East Kansas

Phone 307

Yours for Sport
R. S. Elliott ARMS CO.

"Sporting Goods Exclusively"
1422-24 GRAND AVE KANSAS CITY, MO.

Liberty Flower Shop

Phone 466

West Side Square

Established 1867; Nationalized 1933
The National Commercial Bank
Liberty, Mo.

Compliments of Christopher Sales Co.

207 Walnut
KANSAS CITY, MISSOURI

WHITEWAY INN

Good Hamburgers and Coffee

Where W. J. C. Students Meet
Liberty, Mo.

A. I. D.

Southside Pharmacy

South Side Square PHONE 71 Liberty, Mo.

H. R. Banks Lumber Co.

All Kinds of Building Material

"Under Cover" Phone 389 Liberty, Mo.

TURPIN MOTOR CO.

Authorized Ford Dealer

Liberty, Mo.

Phone 717

James Costello Lumber Co.

General Building Material

Everything in the Dry

THE CITIZENS BANK

LIBERTY, MO.

Your Business Appreciated

It would be a good Policy

That the Japanese language has no personal pronoun "I". (We believe that many would profit if they would emigrate to Japan—and of course learn the Japanese language.)

An apt reply

The following conversation was overheard in a Kansas City speak. "This liquor won't hurt my eyes, will it?" queried a new customer.

"No," retorted the bar-keep. "Not if you have the money to pay for it."

SHELL SERVICE STATION
100 West Kansas LIBERTY, MO.
E. DUNCAN & SON

DEE MOSBY
GENERAL INSURANCE UNDERWRITING

PLAZA RENTAL LIBRARY
W. S. MEYER

JACK O'LANTERN
A Good Place to Eat Located at the Major Hotel
LIBERTY, MO.

TOG'RY SHOP
N. CHRISMAN

LIBERTY LAUNDRY CO.

Sevier's Drug Co.

PROGRESSIVE SHOE SHOP
E. L. JACKSON, MGR.

CHURCH BEAUTY SHOP
LIBERTY, MO.

J. S. CONWAY GROCERY CO.
LIBERTY, MO.

FOR FEED, COAL, GRAIN, AND FLOUR—
PHONE 233 OR SEE
HENDERSON SUPPLY CO.

PLAZA THEATRE

The Eastern Baptist Theological Seminary

1808-18 South Rittenhouse Square

PHILADELPHIA

*Faithful to our historic Baptist beliefs.
Loyal to our denominational interests.
True to the highest educational standards.*



The courses of instruction are invigorating, elaborate and efficient.

The professors are scholarly, wisely conservative and thoroughly up-to-date.

The Seminary prepares its students for the Ministry, Missionary Endeavor, and special service as Pastors' Assistants, and as leaders in Religious Education and Gospel Music.

It is surrounded by great libraries affording opportunities for research work, and by many other cultural advantages.

It has so systematized its evangelistic and missionary activities that all students enjoy the privileges of these spiritual clinics.

In matters of general development it affords opportunities for regular medical examinations, an unusual chance for adequate physical training, the stimulus of a wide-awake debating society and other features not common in theological schools.

For Information Address: President Austen K. de Blois

KANSAS CITY LIFE INSURANCE COMPANY

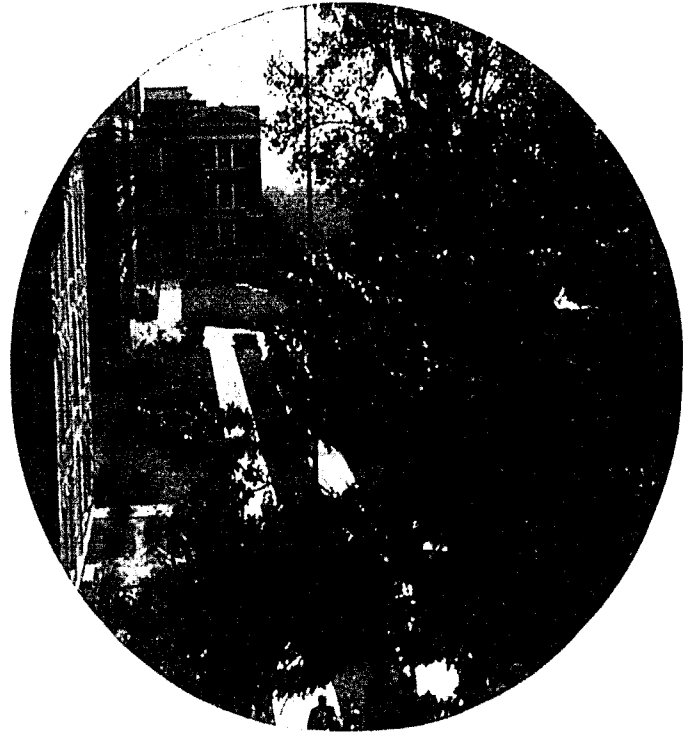
A permanently dependable institution operated for the benefit of its policyholders first.

Paid Beneficiaries and Living Policyholders during 1933, \$10,542,883.05.

A good company to represent or in which to have a policy.



Home Office--3520 Broadway
Kansas City, Missouri



FOUNDED 1849

For eighty-five years its purpose has been to maintain the highest scholastic standards and methods; to afford opportunity for the cultivation of character and qualities of leadership.

It is a college with a glorious past, a creditable present, and a promising future. Its students, its alumni, its friends, have a justifiable pride in its traditions, its growth, and its future.

WILLIAM JEWELL COLLEGE

JOHN F. HERGET, PRESIDENT

Burger Baird
OF
KANSAS CITY

MAKERS OF PERFECT PRINTING PLATES
DESIGNERS OF DISTINGUISHED YEAR BOOKS

HELPING YOUR SCHOOL

YOUR school is your larger self. You and your associates influence each other. You develop an atmosphere; you set standards for each other, you arouse interests and stimulate ideals. In your school you form the associations of a lifetime. From among your schoolmates you are likely to select your wife or your husband and in later years your business or political associates. If your school has a good name you share in that name. If you and your fellow students take pride in reflecting honor upon your school, the standing of your school will be a source of strength in your life. Your school is what you make it. If during your school days you stand for the best things in your life among your associates--talk about them, dream about them, think about them, plan for them--that school will be a power in the making of your mind.

THE WILLIAM JEWELL PRESS
Liberty, Missouri

The Gift That Only You Can Give--A Photograph



Be Photographed by PAYNE STUDIO

Official Photographer for The Tatler

Phone 212

Liberty, Mo.

STUDENTS

PATRONIZE TATLER

ADVERTISERS

The 1934 Tatler

staff is grateful for the cooperation given to us by our advertisers, and we wish them success for

1934-35

Donald N. Duncan, Managing Editor

THE STUDENT STORE

"Headquarters For All School Supplies"

Sporting Goods
Felt Goods
Jewelry

Co-op

Russell Ash, Manager

Ice Cream
Candy
Pop

Parker, Dufold and Conklin Endura Fountain Pens and Pencils

We Have Them

Regusted

"We are happy to prevent," said the radio announcer as he introduced a musical monstrosity, and we marked our score card, "one hit, no runs and no errors."

No contestants [What do you think?]

In England recently they held a contest to determine the ugliest woman and only one contestant could be persuaded to enter. (What would happen in America, if such a contest as this were to be held?)

Just a suggestion

Some after dinner speakers need to know that the longer the spoke, the greater the tire.

THOMAS A. PETERSON

Academic Caps - Gowns - Hoods
20th & Baltimore Ave. KANSAS CITY, MO.

Compliments of A FRIEND

ELECTRIC SHOE SHOP
Across from P. O. LIBERTY, MO.

LIBERTY MONUMENT CO.
39 S. Main St. LIBERTY, MO.

HUGHES-MCDONALD DRY GOODS CO.
Specialists in Silk Hosiery, Women's Coats & Dresses

BECTOLD COMPANY
200-212 Pine Street ST. LOUIS, MO.

LIBERTY MARKETING COMPANY
Grain, Hay, Flour, Feed and Coal
PHONE 841 LIBERTY, MO.

WHEN IN LIBERTY MEET AT
BRANT'S

**SYSTEMATIZE
YOUR SCHOOL DAYS**

*A checking Account here tells where your allowance is spent.
A Savings Account lays the foundation for Business and System in later life.*

First National Bank
Liberty, Missouri

Index

FACULTY

Armstrong, J. C. 19
 Bowles, R. E. 19, 41
 Byrns, A. G. 19
 Churchill, Helen 22, 64
 Chrisman, Clarence 19
 Davis, John 20, 62
 Denton, B. Edward 22
 Derwacter, F. M. 22
 Edson, Frank G. 20, 63
 Elmore, Clarence J. 19, 64
 Ewing, Prewitt W. 19, 55, 61
 Fruit, John P. 20, 60
 Grosch, David 22, 72
 Harvey, Paul Caspar 20, 60
 Hester, H. I. 21, 65
 Isley, Thurston 21
 Pugh, Ulma R. 22
 Rice, Virginia D. 20, 53, 61
 Smith, Holt 21, 66
 Smith, W. C. 20
 Sullivan, J. B. 5, 21
 VanTrump, Joseph 21, 62
 Weida, George F. 21, 63

SENIORS

Adams, Millicent 26, 64
 Ash, Russell 24, 40, 70, 80
 Bauman, Henry 24, 64
 Benson, George 24, 65
 Bittle, Clifford 24, 66, 67
 Blain, Bernard 24, 81
 Bollinger, Robert 24, 58, 64, 81, 83
 Bowman, Georgia Bessie 24, 53, 56, 57, 59, 60, 70, 73, 82
 Christian, Leslie 24, 67, 76
 Crose, Paul 24, 42, 43, 80
 Davis, W. E. 24, 62, 80, 83
 Dawson, Wilfred 24, 58, 77, 83
 Dunn, Dorothy 25, 66
 Ennis, Edna Mae 25, 59, 66, 75, 82
 Farris, James 25, 58, 60, 66, 71, 80, 83, 87
 Fightmaster, Bernard 25, 43, 77
 Hagood, Hurley 25, 42, 58, 65, 71, 78
 Grant, Herman 25, 43, 77
 Hammon, George 25, 53, 67
 Hanback, Geneva 25
 Hicks, George 25, 47, 77
 Hume, Vera 25, 59, 66, 73, 82
 Jochum, Everett 25, 64
 Long, Earl 25, 58, 66, 79
 Long, Lee 26, 53, 65, 67, 80
 Maddox, Linden 26, 66
 Mason, Mildred 26, 75
 Masters, Herbert 26, 62, 79
 Medlin, Shad 26, 40, 67, 78
 McKee, Woodrow 26, 76
 Neal, Kenneth 26, 77
 Norris, Charles 26, 67
 Owen, William 26, 66, 79

Per Lee, Alice 26, 53, 59, 66, 75
 Pielstick, Donald 26, 67
 Pielstick, Margaret 26
 Ramirez, Donato 27, 65, 67, 76
 Rapson, Elinor 27, 75, 82
 Rathmann, Julius 27, 53, 56, 66, 78
 Stanley, Berry Wall 27, 71, 80
 Summers, Bruce 27, 58, 66, 81, 83
 Thompson, Arthur 27
 Tripp, Ramona 27, 56, 59, 60, 61, 70
 Utter, Marvin 27, 53, 56, 64, 67, 76
 Walsler, Glenn 27, 64, 79
 Wiley, Ward 27, 49, 81
 Weber, Paul 27, 67
 Whaley, Nellie 27
 Williams, Edgar 27, 67
 Pratt, Eugene 27, 67
 Wright, Esther May 27, 59, 61, 69
 Young, Forrest 27, 64, 67

JUNIORS

Allen, Cyrus 29, 62, 81
 Alspaugh, Glen 29, 77
 Anderson, Grant 29, 53, 65, 67, 70
 Atwood, Lenora 29, 56, 61, 73
 Bailey, Margaret 29, 74
 Beck, Burton 29, 40, 53, 56, 57, 61, 66, 67, 81
 Beck, Frank 29, 66, 80
 Belles, Mary 29, 66
 Brown, Wilson 29, 63, 64, 80
 Coen, Chester 29, 62, 81
 Cox, Ruth 29, 52, 75
 Crutchfield, John 29, 66, 67, 76
 Cumpston, Ralph 30, 42, 46, 81
 Davidson, James 30, 56, 57, 77
 Duncan, Donald 30, 53, 57, 61, 67, 71, 80
 Fordham, Buford 30, 65
 Galnes, Carl 30, 63, 64, 81
 Hall, Lucille 30, 53, 61, 69, 71, 75
 Haley, Nadine 30, 69, 74
 Hensley, Clark 30, 67, 76
 Hufft, Collins 30, 42, 77
 Hunt, Charles 30, 67
 Jarvis, Leslie 30, 53, 66, 81
 Jennings, Cyrena 30, 74
 Jeter, Kenneth 31, 78
 Kirchner, Eugene 31, 67, 76
 Kirkpatrick, Paul 31, 53
 Lyon, Robert 31, 70, 78, 83
 McElwain, Ralph 31
 Mann, Ruth 31
 Muchmore, Cloyd 31, 64
 Offutt, Thelma 31, 67
 Page, C. W. 31, 65
 Parker, Elizabeth 31
 Parker, Talton 31, 79
 Payne, Edna 31
 Reppenhagen, Walter 32, 56, 67
 Reynolds, Gilbert 32, 65, 66, 79

Seward, John 32, 80
 Smith, Cecil 32, 67
 Sutherland, Lon 32, 40, 46, 66, 79, 83
 Thompson, Melvin 32, 42, 47, 66, 79, 83
 Trabue, James 32, 63, 80
 Vike, Bernadine 32, 71, 73
 Wickstrom, Dorothy 32, 73
 Willis, Franceil 32, 60, 70
 Yates, Inez 32, 69, 71, 75
 Young, Raleigh 32, 80

SOPHOMORES

Bayse, Edwin 33, 77
 Bessmer, Robert 33, 81
 Brady, Edwin 33, 65, 77
 Burch, Mary Belle 33, 70
 Campbell, Mildred 33
 Carlin, Maud 33
 Cooper, Ralph 33, 63, 65, 66, 80
 Davis, Kimzey 33, 66, 80
 Davidson, Margaret 33, 74
 DeMasters, Ray 33, 79
 DeMasters, Robert 33, 79
 Ditto, Vella 33
 Hale, Hazel Marie 33, 69, 74
 Hammond, Ardath 33
 Hemphill, Russell 33, 79
 Hennon, Mansel 33, 78
 Hilton, Richard 33, 62, 65, 80
 Hintz, August 33, 56, 57
 Hockett, Alice 34, 69
 Hoover, Martha 34
 Jennings, Jack 34, 65, 67, 71
 Koch, George 34, 77
 Koch, Mary Anna 34, 75
 McGraw, Frances 34, 69, 74
 Magruder, Burnett 34, 56
 Marriott, Cread 34, 78
 Moore, Charles 34, 77
 Moorehead, Andrew 34, 67
 Murphy, Emmett 34, 40, 78
 Palmer, Judson 34, 71, 80
 Plummer, Philip 34
 Ramirez, Ciro 34, 67
 Richards, William 34, 65
 Realing, Herbert 34, 53, 81
 Robinson, Vyra Alice 34, 67, 82
 Schaefer, William 34, 80
 Smith, Lowell 35, 81
 Thompson, Milan 35, 67
 Thompson, Paul 35, 53, 56, 60, 71, 79
 Stouffer, Earl 35, 43, 80
 Trotter, Harry 35, 65, 78, 83
 Truex, Dorothy 35, 69
 Turpin, Harry 35, 66, 80
 Vaughn, Louise 35, 53, 56, 57, 64, 73
 White, George 35, 66, 79
 Wood, John 35, 67

FRESHMEN

Archer, Edgar 36, 47, 80
 Aull, George 36, 80
 Beck, Leon 36
 Bell, Keller 36, 79
 Betts, Clarence 36
 Brant, Edward 36, 79
 Brower, Clyde 36
 Browning, William 36, 78
 Burkhardt, Annajane 36
 Burnley, Evelyn 36, 73
 Byrns, Else Jane 36
 Campbell, Katherine 36
 Cope, James 36, 78
 Carpenter, William 36, 81
 Crawford, Medora 36, 75
 Chrane, Frank 36, 79
 Davis, Eleanor 36, 75
 Durham, Dudley 37, 77
 Ellis, Lance 37, 80
 Eubanks, Fern 37, 53
 Foley, Jack 37, 67
 Hanback, George 37
 Hufft, Jake 37
 Hyatt, Robert 37, 67
 Johnson, Forrest 37
 Johnson, Robert 37, 77
 Keir, Maxine 37, 75
 Knight, Clayton 37, 77
 McComas, Joe Allen 37, 46, 79
 McDonald, Edward 37, 79
 McDougall, Margaret 37, 53
 McGonigle, Betty 37, 73
 Mann, William 37, 79
 Mansfield, Paul 37, 81
 Marquette, W. R. 37, 47, 65
 Marti, Kenneth 38, 79
 Miller, Margaret 38, 75
 Million, Mildred 38
 Ormsby, H. A. 38, 79
 Payne, Charles 38, 40, 81
 Payne, Emma 38, 74
 Perry, Benjamin 38, 77
 Pigg, Donald 38, 78
 Proctor, L. M. 38, 78
 Quick, Oswald 38, 67
 Renshaw, Fred 38
 Rhodes, Howard 38
 Saunders, Frances Jean 38
 Settle, Pauline 38, 73
 Shouse, Mary Beth 38, 75, 86
 Slater, Estelle 38, 53, 75
 Smiley, Walter 38, 65, 81
 Spurgin, Mary 38
 Sturges, Viola 39
 Sweany, Ellen 39, 73
 Vinyard, Paul 39, 80
 Waters, William 39, 80
 Westbrook, Mary Margaret 39, 75
 Whistler, Clark 39, 67
 Young, Mabel 39
 Wilson, Walter 39
 Wyatt, Delma 39

Advertisers

A. I. D.
 Banks Lumber Co.
 Bectold Co.
 Brant's Drug Co.
 Burger-Baird Engraving Co.
 Christopher Mercantile Co.
 Church Beauty Shop
 Citizens Bank
 Commercial Bank
 J. S. Conway Grocery Co.
 Co-op Book Store
 Costello Lumber Company
 Eastern Baptist Theological Seminary
 Elliott Arms Co.
 Electric Shoe Shop
 First National Bank
 S. B. Gumpert Co.
 Henderson Supply Co.
 Hughes-McDonald Dry Goods Co.
 Jack O' Lantern
 T. M. James & Son
 Kansas City Western Dental College

Kansas City Life Insurance Co.
 Liberty Flower Shop
 Liberty Monument Co.
 Liberty Marketing Co.
 Liberty Laundry Co.
 McGinness Drug Co.
 Dee Mosby Insurance Co.
 Payne Studio
 Plaza Rental Library
 Plaza Theatre
 Progressive Shoe Shop
 Thomas A. Peterson
 Safeway Stores
 Schneider Meat Co.
 Standard Oil Co.
 Sevier's Drug Co.
 Shell Service Station
 Tog'ry Shop
 Turpin Motor Co.
 William Jewell College
 William Jewell Press
 Whiteway Inn

Do or die

A fat negro wife to her husband: "What's the idea of bringing me home a washing board and a looking glass?"

"Because," is the reply, "if you don't use that board to bring in some money—you can use the mirror to look at yourself slowly starvin' to death."

A telegram

In Africa somewhere
 1-37-98

Dear Faculty:

Killed two lions today. Stop. Send de-tails later.

Signed,
 John Herget

A reply to the telegram

In Missouri
 2-44-99

Dear Herget:

We bought a horse for you to ride at a bargain. Stop. Cost us 100 bucks. Stop. Yet owner said that the horse had 1000 bucks in it. Stop. What a bargain.

Signed,
 Your faculty

She: "I'm Suzette, the Oriental dancer."
 He: "Shake."

Question

Doesn't many a man figure that he will go to heaven because his wife always drags him along wherever she goes?