

EDWIN MONROE, *Editor-in-Chief*
JOE AMERY, JR., *Business Manager*

Printed By
THE WILLIAM JEWELL PRESS

Engravings By
BURGER-BAIRD ENGRAVING COMPANY

THE FOREWORD

Eagerly striving to break away from the established formula for a college annual, the staff of the Tatler 1936, representing the junior class, presents to the student body, faculty, and friends of William Jewell College this remembrance of the school year 1935-36. In vain, you will search through the pages of this book seeking one, definite central theme or motif. As the lives of students are cosmopolitan we would attempt to build a cosmopolitan book—a book which would leave many and varied impressions stamped indelibly on your minds.

Proudly, we give to you the Fall Tatler, the Winter Tatler, the Spring Tatler of the past academic year.

6-2-36

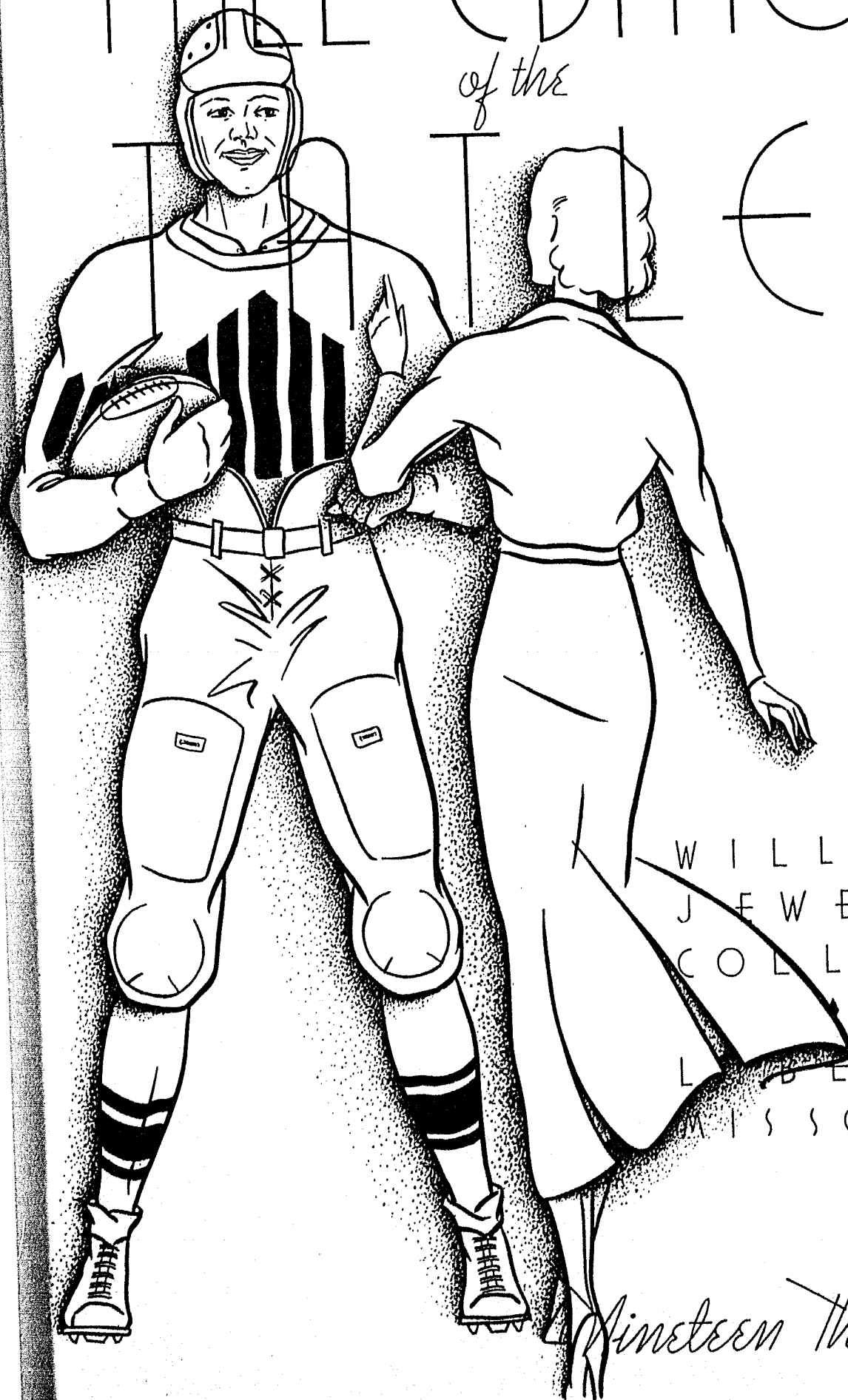
43177



THE DEDICATION

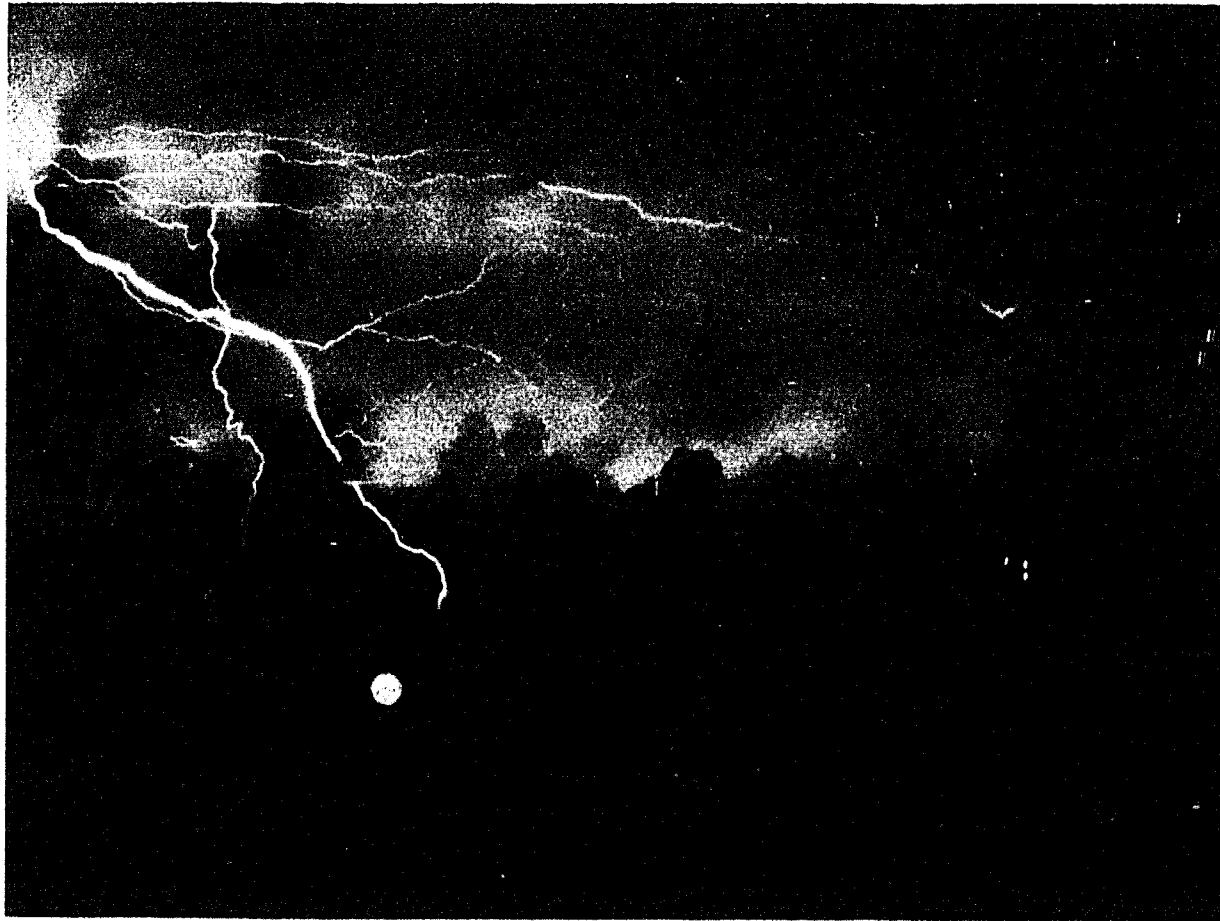
To one great in works, in influence, in deeds, in character, in faith, to one whose interests are ecumenical, catholic, cosmopolitan, to one who is a living example of Jewell's motto—"Trust in God and Work"—to Dr. Hubert Inman Hester we dedicate this volume of the Tatler.

FALL EDITION
of the
TATLER



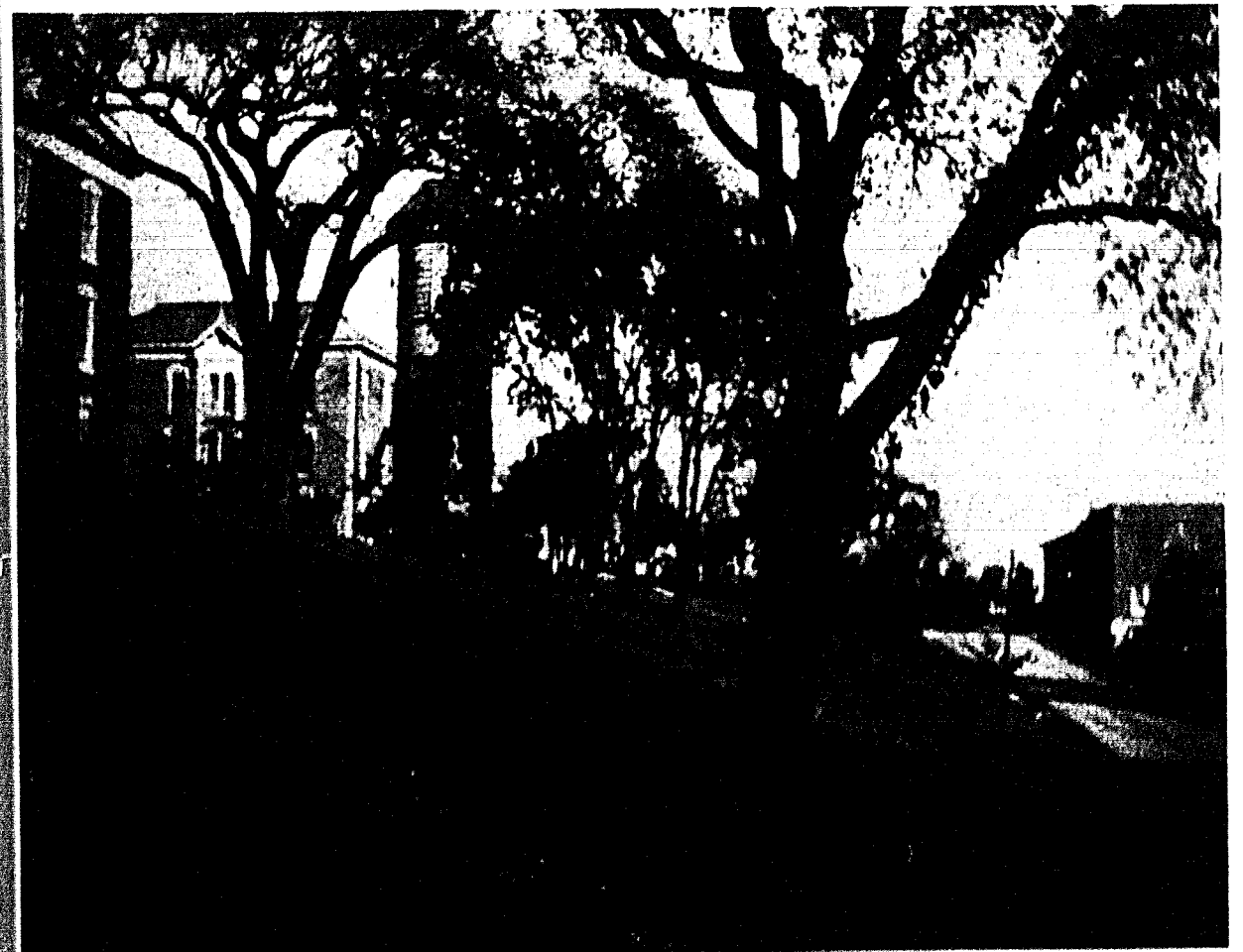
WILLIAM
JEWELL
COLLEGE
LIBERTY
MISSOURI

Nineteen Thirty Six



Interrupting a shower of refreshing rain, a brilliant flash of lightning illuminates the skyline, causes Marston, Jewell, the Smoke-stack to stand out in bold relief.

The return of day and the sun—trees lifting up from terraced slopes—lengthening shadows—historic landmark surrounded by younger trees.



Queen

Miss Mary Beth Shouse



Fight !Team! Fight! Huddle; Leisure minutes.
Band plus Red Hots; Tackle deluxe; Cosmopolitan.
Grosch gives pointers; Homecoming Parade; Fish, Cormack,
Auggie, Sing.
More band; On the line of scrimmage.

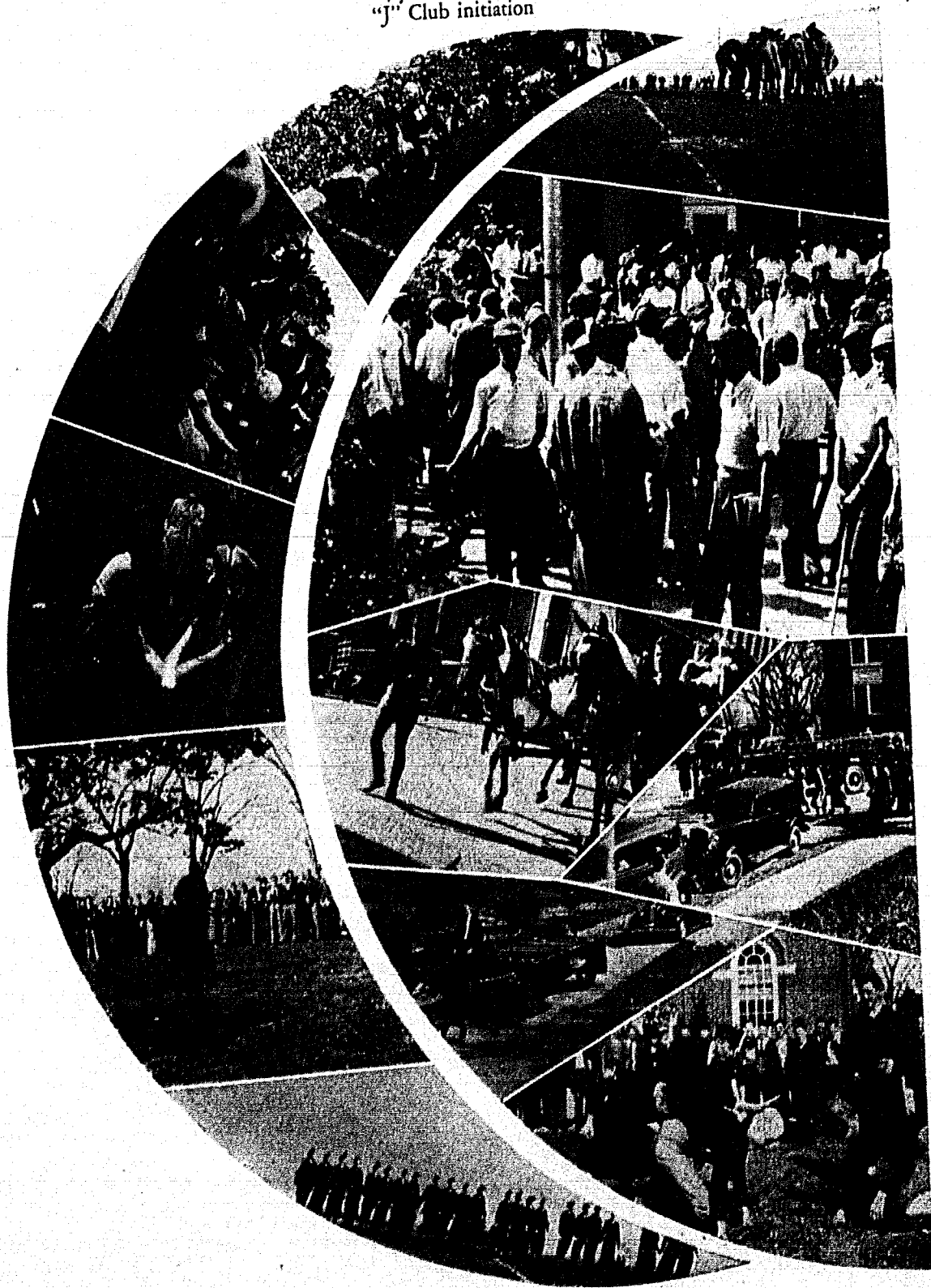


Parade leaves hill; His arms up, the ball down; Melrose float. Represents T. N. T.; Headed for the pond; Kappa Sigma strikes! Newport, Browning, Kirkland—three big men—physically; That's McCarty on left end; Bowles sifts through the line. Eager crowd on feet as usual; Missouri Band parades in Memorial Stadium: Walk faster, Frosh!

Come on, heave that ball back here! Get in formation Cunningham! Man Mountain Boner; Fiji float. The long trek to the cleansing waters; Boy, that's class—Maples, Chrane, Sharp—what more could you ask? Parade approaches square from West; Look, we caught the line up: if you don't see it, drop it; Youngsters; Glorious woman-hood; Theta Chi Delta initiates.



Jewell in Memorial Stadium, Columbia; Signals.
Looking down the bench; Recognized only in the fall—fresh-
men.
Stone—suspended; A pretty team—of horses; Action on the
hill before the parade.
Yell, you hounds!; Sigma Nu floats; Red Hots in formation;
"J" Club initiation



The Administration
with
Organizations and
Activities
Prominent in the Fall



Dr. John F. Herget

President

- A. B. 1895 William Jewell College
- A. M. 1898 William Jewell College
- LL. D. 1929 Denison University,
Granville, Ohio.

William Jewell College is proud of its distinguished President. As an executive, he has guided the school through difficult periods giving it a safe position. As President, he has given wise council to the faculty and to the students, and through his associations has brought honor to the school. As an orator, he has spoken widely and his influence has been felt. As a Christian gentleman, he works and lives with ceaseless effort and energy. As a writer of letters, he has written books and

poems which are marked by thought and faith. In 1898 John Francis Herget graduated from Jewell, a few years later from the Rochester Theological Seminary. He was Pastor in Buffalo, New York 1895-1898, and in St. Louis 1898-1902; Superintendent of Missions in St. Louis 1902-1904, he was called to the pastorate of the Ninth Street Baptist Church at Cincinnati in 1904, and there remained for twenty-four years, with the exception of a time over-seas. He came to William Jewell as President in 1928.



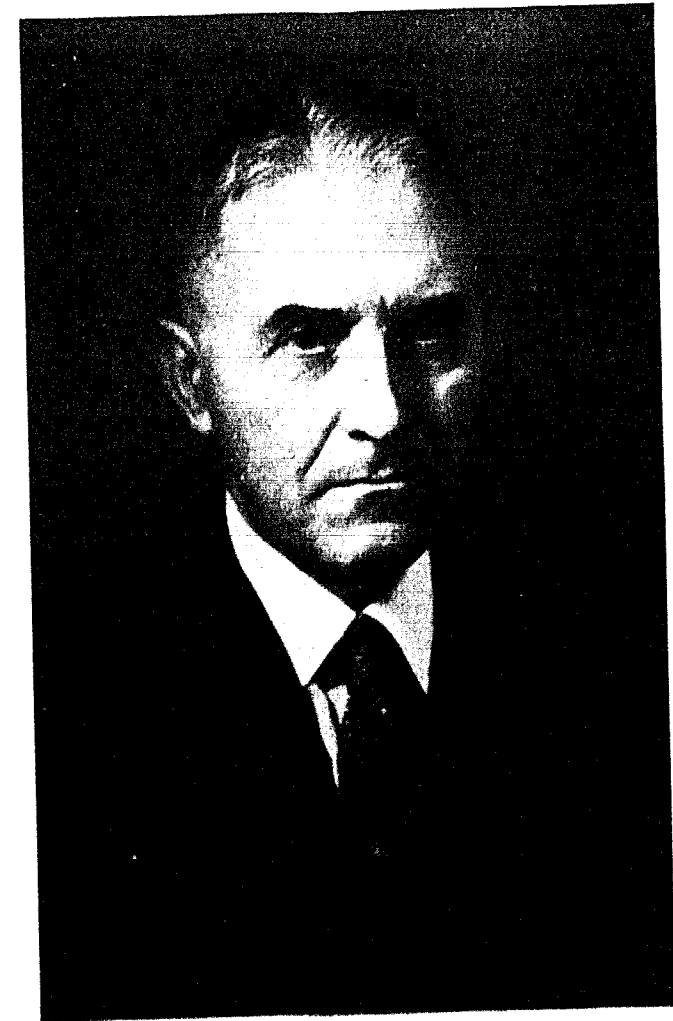
Dr. J. C. Armstrong, A.M.
Librarian



J. E. Davis, A.B.
Business Administrator
Head of the Department
of Physics

Dr. Allen J. Moon
A.M., LL.D.

Dean of the College
Head of Department of Ancient
Languages
Professor of Latin





Eubanks



Carlin



Millen



Lewis

Personnel and Clerical

Miss Opal R. Carlin serves in the official capacity as Assistant Librarian. She has done work on the B. L. S. degree at Columbia University, New York City.

Miss Mary Ruth Millen is the Assistant Registrar. She attended Stephens College and later received the A. B. degree from William Jewell.

Mrs. James Lewis came to the office of Assistant Treasurer last fall. Her pleasant manner soon gave her many friends.

Seaford Bill Eubanks was graduated from Jewell with the class of 1932. As Field Representative and Personnel Secretary, he is a very busy man.

Mr. H. B. Early is Secretary-Treasurer of Jewell. Three times during the school year do students pass his office window, matriculate.

Jewell's newly acquired Field Representative is J. C. Godbey of Sedalia. He spends the most of his time on field trips enrolling students for the coming year.



Early



Godbey



W. D. Johnson
President of Board



J. B. Reynolds
Vice-President of Board

BOARD OF TRUSTEES

Amick, E. E.	Fairfax Bldg., 101 W. 11th Street, Kansas City
Atwood, Judge Frank E.	Jefferson City
Brown, S. J.	200 New England Building, Kansas City
Browning, W. P., jr.	Olathe, Kansas
*Culbertson, Townley	1025 W. 58, Kansas City
Fitch, W. M.	International Building, St. Louis
Graham, J. P.	Graham Lumber Company, St. Louis
Griffith, W. H.	Griffith Shoe Company, St. Joseph
Johnson, W. D., <i>President</i>	2512 Fidelity National Bank Bldg., Kansas City
Jones, Minetry, jr.	Jones Hat Company, St. Joseph
Mackey, J. C.	Clarksville
Martin, T. D.	Martin Motor Company, Springfield
Martin, W. W.	Masonic Orphans' Home, St. Louis
Pillsbury, E. S.	1827 Pine Street, St. Louis
Prince, Chester J.	7019 Dale Ave., St. Louis
Proctor, Rev. L. M.	Independence
Ray, A. T.	Gallatin
Reynolds, J. B., <i>Vice-President</i>	Kansas City Life Insurance Bldg., Kansas City
Storts, Com P.	Slater
Trimble, E. G.	Insurance Building, Kansas City
*Trimble, Judge Francis H.	Liberty
Tutt, Dr. A. M.	Liberty
Weber, Rev. Paul	Jefferson City
Westbrook, W. M.	Marshall
Willhite, Hugh	Excelsior Springs
Winger, Maurice	Waltower Bldg., Kansas City
•Deceased.	

Freshmen



Kenneth Lee Alspaugh James Thurlo Atkins
Liberty Warsaw

Jack Arnold
Jamesport



Eleanor Austin Kenneth Banes
Caspar, Wyoming Carrollton

Edward Bailey
Sheridan, Wyoming



Vivian Barton Martha Benedict
Independence Milwaukee, Wisconsin

Myrtle Bell
Liberty



Volna Richard Beverly Chester S. Bowles
North Kansas City Liberty

Claude C. Boner
Maysville



Eva Doris Boyer Margaret Ann Burroughs
Missouri City Jefferson, Iowa

Erwin Benjamin Brune
Buckner

William Asa Burns Catherine E. Clark
Los Angeles, California Greenville, Michigan

Loren Butler
Sheridan, Wyoming



George Clarke Marie Cochrane
Madison, Kansas North Kansas City

Harry A. Clevenger
Missouri City



Grant Coleman Charles J. Cooley
North Kansas City Excelsior Springs

Julia Helen Connely
Tsining, Shantung, China



Everett H. Cormack Josephine Crockett
Solomon, Kansas Liberty

Lillian M. Crenshaw
Blue Springs



Bernice Crossett David E. Crystal
Excelsior Springs Brookfield

Delbert S. Crouch
Turney





Mariana M. Cunningham
Kansas City, Kansas

Jack Street Dudley
North Kansas City

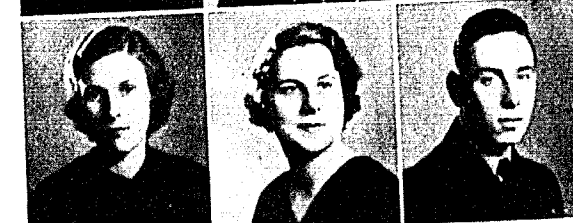
Jennie Belle Dicks
Webster Groves



Byron Arthur Eberts
Holt

Darrell L. Fenton
Kansas City

Edwin Powers Elliott
Clay Center, Kansas



Jane E. Fleming
Missouri City

Gene Carter Garrett
Mexico

Virginia Nelle Frink
Paola, Kansas



Kathryn B. Graves
Montgomery City

Frances Marie Hall
Independence

Nelda Green
Polo



Virginia Harland
Independence

William B. Hennon
St. Louis

Anna Lois Heaton
Montgomery City

Virginia Huber
Boonville

R. D. Johnson, jr.
Marshall



Lee Johnson
Kansas City

Marjorie Jane Jolly
Webb City, Oklahoma

Lyle William Julian
Independence



Phillip M. Jones
Sheldon

Loyd Glenn Kelly
Kearney

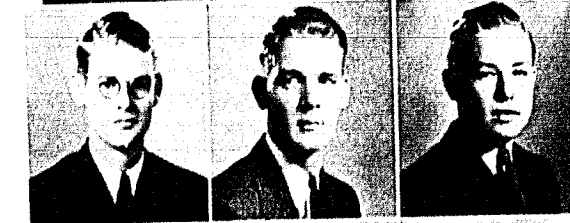
Wilma Kittrell
Manchester, Iowa



Robert W. Kelly
Kearney

Vernon Knight
Osceola

Awbrey Harold Lamm
Boonville



Victor Knight
Osceola

Robert A. Lawson
Seneca

James Dallas Lewis
Kansas City, Kansas



Frank Leask
Liberty



Robert Mabrey
Independence

Edgar Main
Liberty

James Mace
Winnwood



Juanita Martensen
Kansas City

Jack Martin
St. Joseph

Marie Martensen
Kansas City



Clyde McCarty, jr.
Warsaw

Mary Anne Medling
Caruthersville

Norman McDonald
Liberty



James Merritt
Memphis, Tennessee

William M. Miller
Platte City

Marnie Rose Middleton
Liberty



William Modes
Chicago, Illinois

Hubert Earl Newbill
Kansas City

Max Webster Morgan
Downing



Helen Virginia Offutt
Orrick

Dorothy Jayne Parrott
Liberty

Christine Page
Liberty



Jack Perry
McFall

Thomas Pryor
Excelsior Springs

Price Philbrick
St. Joseph



Nancy Ramirez
Liberty

Cyrus Riddell
Brookfield

William Rhoades
Slater



Edina Belle Riddle
Trenton

Lawrence Sadler
Webb City, Oklahoma

Wallace Rutledge
Louisiana



Marvin Sands
Liberty

Thomas Scruggs
Kansas City

Becky Schroeder
Independence



Earl James Wills
Cameron

Charles Shaw
Missouri City

John Richard Shanahan
Liberty



Ella Mae Shouse
Liberty

Russell Smith
Kansas City

Madeline Smith
Leavenworth, Kansas



Albert Nelson Sprague Gardner Thurston
Borger, Texas Pottersville, Massachusetts

Henry Stanley
Independence



Mary Katherine Trescher William F. Van Trump
Louisiana Liberty

Lloyd Troxler
Holt



Eloise Varley
Shenandoah, Iowa

George Weinhold
Carrollton

Marvin Walker
Princeton



Irene Dinus
Lake City, Iowa

Maurice Winger
Kansas City

Maudeen Walker
Holt



Wilma Witcher
Sweet Springs

Harold Young
Fort Morgan, Colorado

Stanley Wong
Cincinnati, Ohio

Unphotographed

Melvin Allen
Dorothy Armentrout
Robert Aubuchon
Mildred Backer
Frederick Beckman
Olin Bock
Robert Burch
Biron Bush
James Chrane
Stanley Clinesmith
Lewis Fightmaster
George Garner
Henry George
Henry Goode
Thomas Hackler
Ralph Hardy
Edward Humphreys
John Kugler
Joseph McCutchan
Benjamin McMurtrey
George Forest Magee
Morris Magee
Myron Gilbert Mann

Camden
Kansas City
Philadelphia, Pa.
Fremont, Nebraska
Kansas City
Appleton City
Intake, Montana
North Kansas City
Liberty
St. Joseph
Liberty
Lathrop
North Kansas City
Denver, Colorado
Lexington
Independence
Lebanon
Richmond
Independence
Kidder
Albany
Albany
Kidder

Leroy Means
Roland B. Miller
Richard Noble
Eleanor Payne
Charles Pearman
Margaret Phillips
Alma Reardon
John M. Ross
Conley J. Scott
Carl Sigmon
Donald Spratt
George Stepp
John Stewart
Charles Stone
Mary E. Thompson
Olin Turner
Alfred Vogt
Robert Waid
Mildred Weakley
William Woolfolk
Margaret Young
Harold Younger

Mosby
Weston
Los Angeles, California
Liberty
Albany
Liberty
Auxvasse
Kansas City
Padroni, Colorado
Weston
Webster City
Gallatin
Kansas City
Liberty
Greybull, Wyoming
Norborne
Princeton
Kearney
Liberty
Plattsburg
Albany

Football

ASSISTANT COACHES AND CAPTAINS

The separation of the athletic records according to seasons necessitates an introduction to the coaches, captains and student manager. Coach Bowles was capably assisted this past season by two new additions to his coaching staff.

Emerson "Dutch" Maples, a graduate student of theology, hails from Union College, Jackson, Tennessee where he was an active participant in football, basketball, and baseball. The work of "Dutch" with the team, especially the backfield was greatly appreciated.

Raymond Shoemaker, one of the greatest football players to attend William Jewell, for the first time assumed a more or less official position and his presence filled a distinct need.

Mansel Hennon is the enthusiastic student manager and trainer.

Merrill McDougall captained the football squad of 1935.

Frank Chrane is captain of the track squad of 1936. He was undefeated in the 100 yard dash last season and met defeat only once in the 220. Chrane is a junior.

Edwin Monroe as a sophomore captained the tennis team of 1935 and won the state singles championship. He was re-elected captain.

BOB DEMASTERS TO SUCCEED CAPTAIN McDUGALL IN 1936

In a meeting before the Thanksgiving Day game with Rockhurst the squad members chose Bob DeMasters to lead them in the coming season. Bob, a tackle, is to fill the place vacated by Merrill McDougall, senior, and an All-M.C. A.U. center the past two years.

More than custom alone dictates that we should pay homage to our departing captain. When it is considered that the captain cannot always be himself and that as he leads so does the team play, and that he must be a tangible expression of that which we call, "the team spirit", we pay him his highest tribute when we choose to remember him not as Merrill McDougall but as the captain of the 1935 squad.

The decisions that are met by the captain are very often the margin between defeat and victory. Captain McDougall was a leader of decision and possessed the faculty of being able to discern in short time the wisest move. The leadership of Captain-elect DeMasters should be characterized by the same qualities.



Coach Bowles

The guiding force of Jewell's athletic destiny for a quarter of a century, "Dad" Bowles, continues to turn out teams undefeated in spirit regardless of the final score. In spite of recent unsuccessful teams with regard to championships, "Dad" still has won more championships for Jewell than any other college in the state.



Maples
McDougall

(22)

Shoemaker
Chrane

Hennon
Monroe.

Captain McDougall

The start of an end run

Captain-Elect DeMasters



Wheat

House gets off a good kick

R. Bowles



Brant

Riley

Hufft

Wilson



Taylor

Stoeltzing

Martin

McCarty

House

A five yard loss

C. Bowles



McDonald

Referee O'Sullivan

Simrall



(23)

Season

JEWELL GETS THIRD PLACE TIE

The close of the 1935 gridiron war found the Cardinals holding a tie for third place with Tarkio. Statistically the past season was not a successful one, although Jewell won from her powerful traditional rival in a game which proved to be the major upset of the M.C.A.U. season and which blasted Central's hopes for a repetition of the championship of 1934. In individual playing ability Jewell was probably the strongest in the conference, but failure to "click" at the right time has lost games for greater teams than Jewell's.

"DAD" BOWLES AWARDS 17 LETTERS

First year lettermen are McCarty, Stoeltzing, Taylor, Wilson, McDonald, Younger, C. Bowles, and Martin.

The remaining nine men are veterans of the team.

JEWELL PLACES THREE ON MYTHICAL ALL-CONFERENCE TEAM

Followers of the Cardinals can point with pride to Wheat, Riley, and B. Bowles as all-conference selections. Zack Wheat playing his last year for Jewell was a unanimous choice for the M.C.A.U. all-stars and was picked for the second team all-state over players from Missouri University and the M.I. A.A. Wayne Riley and Bob Bowles, popular selections for halfback and end respectively, have two remaining years of competition and together with DeMasters, Stoeltzing, and House who rated M.C.A.U. second team mention, "Dad" Bowles will have no worries about

getting a nucleus to build his 1936 team around.

PERSONNEL

LINEMEN:

Bob Bowles: He has had football drilled into him since he was old enough to hold a ball. Big and rugged, he has had to miss little time because of injuries.

Harold Taylor: Although handicapped by size, Harold possesses the knack of always being in the play. His value is best noticed on defense.

Clyde McCarty: Small and inexperienced but the fleetest lineman on the squad, his main forte is covering punts.

Bob DeMasters: Captain-elect, unselfish, possessor of an admirable team spirit, and a bulwark in the line.

Jack Martin: Proved to many a burley end and blocking half that it is foolish to assume that gentility of countenance and weakness are synonymous.

James Simrall: Several years of experience and cool headedness under fire made him a valuable man.

Ernest Stoeltzing: As a result of having played center previously, he soon showed opposing centers that slicing was inadvisable.

Zack Wheat: An extremely vicious player who understood the use of his hands thoroughly, Zack was consistently Jewell's most outstanding lineman.

Chester Bowles: Unfortunate for last season's record but inspiring for the future, is the fact that he is a freshman. A steady performer.

Merrill McDougall: A true leader and guiding force both on and off the field, his playing ability is eclipsed only by the unselfish

devotion with which he applied himself to building up the team.

BACKS:

Jack House: A "triple threat" man in the true sense of the term. Perhaps the best forward passer in the state, he is only a sophomore.

Wayne Riley: "Red" has that fighting spirit to a superlative degree. A giant for his weight and height, he was a spark plug.

Ralph Brant: A versatile back whose speciality is pass receiving. He is a sophomore and a veteran of many football seasons.

Norman McDonald: "Mac" has one of those "toes" that can boot them high and far. He is a freshman.

Harold Younger: A freshman fullback with plenty of drive, we state sadly that he attended Jewell only one term.

George Wilson: A junior, he is to be distinguished for his blocking ability. He is expected to do things by the coaching staff.

Jake Hufft: His deadly accuracy when tackling made his work at backing up the line a defensive feature.

MISSOURI U. 30, JEWELL 0

The Cardinals played much better football than the lopsided score indicates. While it was expected that Missouri University would win, the Jewell line gave a good account of itself and in many instances outplayed its heavier opponents. Zack Wheat was easily the outstanding player on the field defensively that day, his performance in this game being one of the factors leading to his selection on the All State team.

JEWELL 7, OTTAWA 6

With Riley starring for Jewell offensively and defensively, the Cardinals came through in the last quarter to nose out a heavier team 7 to 6. Jewell outplayed the Braves in every department and although they threatened several times, were barely able to eke out a one point victory. The high points of the game were a 50-yard punt by House, Brant snagging a 25-yard pass from House, and Riley blocking a

placement kick which would have tied the game.

JEWELL 13, CULVER-STOCKTON 7

The Cards came through to win over a team which had previously been considered a favorite for the championship. Jewell took advantage of one of the many Culver-Stockton fumbles which was recovered by Jackson to convert a threat into a score. Minutes later Culver-Stockton went into the lead by blocking one of Bowles' punts but

TARKIO 15, JEWELL 0

Displaying the most ragged football played all season, the Jewell team added to the pleasure of a Tarkio Homecoming Day crowd by going down to a 15 to 0 defeat. It must, however, be said that the Jewell line was functioning on a par with the Tarkio forward wall, the main difference between the two teams being in backfield strength and the breaks.

JEWELL 0, BAKER 0

The spectators saw a lot of defen-

fore their own homecoming crowd. Victory was especially sweet for Jewell when it is remembered that it was this worthy rival who put Jewell out of the championship picture last year. House and Wilson starred for Jewell with Wheat playing his usual consistent game. Bob Bowles played a good game at end.

WARRENSBURG 20, JEWELL 0

A Jewell team which had long before reached its peak made a very creditable showing against a much superior and

That Big Red Line

Anderson Passes

Squad 1935

Red Hots

McDonald Punts

Riley, behind a charging forward wall, later put the game on ice for Jewell with a plunge for a touchdown and victory. Brant's timely pass catching pulled Jewell out of many a tight spot that day.

MISSOURI VALLEY 10, JEWELL 0

Capitalizing on an "off day" for Jewell an inspired Viking team, led by phantom "Red" Leech, thoroughly trounced a heavier and much too confident Cardinal eleven. While Jewell came back in the second half to outplay their opponents they couldn't muster enough of a scoring punch to tally. Norman McDonald showed well as did Jack Martin and McCarty in their first real test under fire.

sive line work in the game as neither the Jewell nor the Baker backs could shake themselves loose.

The defensive play of Stoeltzing and Wheat was a feature of this game, a combination at the guard positions which proved invincible for the rest of the season. George Wilson played the best game for Jewell offensively and evaded an otherwise drab affair with a nice 22-yard dash. A pass, House to Brant, good for 15 yards, was Jewell's only scoring threat.

JEWELL 13, CENTRAL 7

Making good their sworn threat to blast Central's hopes for a championship, the Cardinals, although the underdogs, completely routed the Eagles be-

heavier team. It is necessary only to say that Jewell was out of its class. The performance of the Jewell linemen in this game was characteristic of their consistent performance all season.

ROCKHURST 10, JEWELL 0

After an early first quarter scoring threat the Cardinals seemingly just couldn't get going again and never again did their shadow darken any of those stripes inside of the Rockhurst 20-yard line. The Hawks made use of numerous intercepted passes to convert scoring threats into touchdowns. Bob Bowles, going into the backfield from his end position, plunged and sidestepped his way for some gains which brought the Big Red Team's followers some satisfaction.



Girls' Pep Squad

The Red Hots is a club organized in 1933 for the purpose of promoting student enthusiasm and pep at inter-collegiate football games. Originally, the organization was composed solely of freshman girls, but in the spring of 1934 it reorganized, under the direction of Ruth Cox Crowe, drew up a constitution and elected officers. It is now composed of freshman and sophomore girls, elected into the club by a unanimous vote of its members.

This year, with Frances McGraw as sponsor, the girls paraded and drilled at the half of each home game and at a number of out-of-town games. Its support of the Big Red Team is long to be remembered.

Officers of the group are elected in the spring of each school year for the following fall. Barbara Bogard served as president of the club this year and Mildred Stoeltzing as secretary-treasurer.

Gamma Pi Epsilon



Else Byrns
Student Editor
Fall '35



C. Lowell Smith
Editor Tatler 1935

An exclusive and distinctive organization is that of Gamma Pi Epsilon. Holding membership are the editors of student publications, *Tatler* and *Student*. Editors learn discipline, know what it is to have to get copy in by a given time. Only the editors can realize the effort put forth

to produce a publication. Their labors are many but often repaid in experience.

Its purpose: To guide and direct student editors and to elevate the journalistic standing of the official student body publications.



William Waters
Student Editor
Spring '36



Edwin Monroe
Editor Tatler 1936

Panaegis



The honorary women's organization whose purpose is to promote

the best interests of William Jewell College.

The members from top to bottom: Mary Belle Burch, Dorothy Donaldson, Frances McGraw, Grace Prewitt, and Dorothy Truex.

Aeons

Photographed from top to bottom: Richard Hilton, George Koch, Merrill McDougall, N. Burnett Magruder, and Harry Trotter.



Recognizing the fact that in William Jewell there were men of ability who were striving for the best interests of the institution, but that more could be accomplished by concerted action than by individual effort, nine men of the Class of '06 banded themselves together under the name of The Aeons in the hope that the welfare of the college might be furthered.

The purposes of the Society are: to keep aglow the fires of college

spirit; to hold undefiled the college honor; to strive for everything tending to the progress of college men; to set a good example to the lower classmen; to support all worthy college institutions, knowing that their progress means college progress; to revere college customs and traditions--in short, to promote the best interests of William Jewell College.

Members Not Returning:
George White, Robert Bessmer.

Sigma Tau Delta

Sigma Tau Delta was founded at Dakota Wesleyan University as an organization of the English students. The William Jewell chapter, Mu Beta, arose from the old Scribblers Club in 1928. This organization seeks to promote the mastery of written English expression, and to stimulate a desire to represent life in terms of truth and beauty. The jewelled gold key bears a lighted torch and fountain pen. Meetings are held once a month where the works of the members are read and discussed.

The members of the faculty and students:

Merrill McDougall
Dorothy Donaldson

Paul Thompson
Dorothy Truex
Mildred Million
Arnold Fenner
Dorothy Sword
Robert Browning
Jim Cope
Clyde Williams
Annajane Burkhardt
Austin Edwards
Nancy Culbertson
P. Caspar Harvey
Dr. J. P. Fruit
Virginia D. Rice

Burkhardt	Cope	Culbertson	Donaldson	Edwards	Fenner
McDougall	Million	Sword	Truex	Williams	Willis



Alpha Phi Omega

Alpha Phi Omega, the ultimate outgrowth of the Boy Scout Legion which was formed on the campus during the year of 1931, is an organization composed of former Boy Scouts whose interest is in furthering the Scouting program on our campus. Alpha Mu chapter of Alpha Phi Omega was given its charter in December of 1934 with a group of thirty-one members.

Friendship, Leadership, and Service are the three cardinal principles of the fraternity and forms the ideal toward which every true A. P. O. strives. The purpose of the organization is to keep alive and active in college men the spirit of the Scout Oath and Laws and to develop friendships and a feeling of good will among the men upon our

campus. Much of the success with which the fraternity has met must be attributed to the leadership and guidance of our local Scouting advisor, Judge E. E. Kirkland, who was influential in bringing the former Scout Legion group into the National Organization.

Officers

President	Richard Hilton
Vice-President	Ciro Ramirez
Secretary	Earl W. Gardner
Treasurer	Dale Bogard
Parliamentarian	George Aull
Chaplain	Oz Quick
Publicity Agent	Edwin Monroe

Aull, Banes, Betts, D. Bogard



Dunlop, Gardner, Hall, M. Hennon



Hilton, Howard, Hull, Kirkland



Marquette, Ed. Monroe, Newport, Oz Quick



Ramirez, Renshaw, H. L. Trotter, Estep





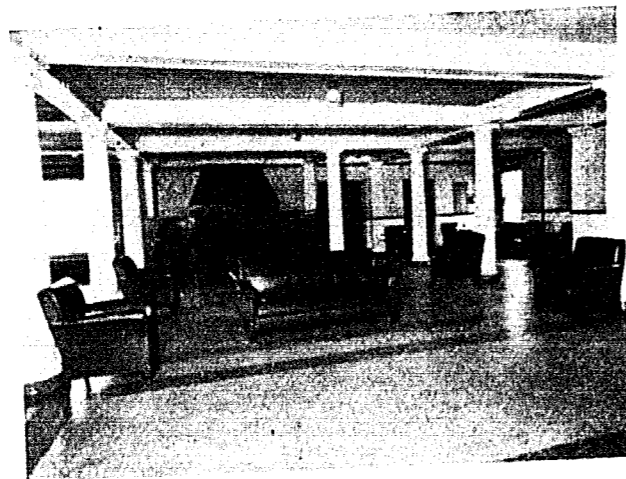
Mrs. Davidson

Mr. Davidson

Mrs. Stanley

Miss Utz

New Ely



New Ely Lobby

Unmindful of the cycles through which New Ely Hall has passed, William Jewell men now live, study, dine, enjoy themselves in this hall. Replacing a very disorderly regime, Mr. and Mrs. Ralph Davidson came to New Ely about four years ago and succeeded in transforming the hall into a suitable dwelling place for men.

One remarkable change instituted is the visiting of members of the faculty and administration and their families. Each Thursday evening, with few exceptions, finds faculty or administrative members eating with students and lingering to visit after dinner. Thus Jewell men get intimate views into the lives of their professors and professors have opportunities to know desires of their students: the field in which they wish to specialize, the graduate schools they would like to attend. The residents of

New Ely Hall are proud of the house mother who on such occasions acts the part of hostess with grace and ease.

Superintending the preparation and serving of meals are Mrs. Grace Stanley and Miss Irbie Utz. The massive kitchen is completely in their charge. To please a large group of students three times a day is their difficult task, yet one which they accomplish insofar as possible.

Jewell men take their meals in the large dining room in the west wing of the first floor. Faculty members have their monthly meetings in the smaller dining room in the east wing of the first floor.

Alleviating somewhat the duties of Mrs. Stanley and Miss Utz, Richard Hilton, head waiter, accommodates students with refunds when checking out of the dining hall. Twelve students are employed in the dining rooms.

Melrose



Melrose Lobby

Melrose Hall is the beautiful, modern fireproof home for William Jewell College women. It was built in 1925. Since the completion of a new wing to the dormitory in 1935, Melrose will accommodate sixty-two women. Dr. and Mrs. H. I. Hester came to live in Melrose Hall in 1926. Dr. Hester is on the faculty of the college. Mrs. Hester is the supervisor and hostess of the dormitory with Mrs. Visa Brown as her assistant. Miss Irene Dinus, a trained nurse, supervises the health of the young women. It is their utmost desire to create a happy home for all who live there.

Superintending the preparation and serving of meals is Mrs. Elsie Keller. She is assisted by seven capable young women. To be able to please the young women of the dormitory is their difficult task. The greatest effort is put forth in order to accomplish this task.



Mrs. Hester

Dr. Hester



Mrs. Brown

Miss Dinus, R.N.

Mrs. Keller

Melrose contains, besides the dormitory facilities, the Y. W. A. room, the T. N. T. local sorority room, the Beta Sigma Omicron national sorority room, two kitchenettes for cooking and for pressing, a laundry room, an infirmary, a trunk room, and a reserved suite for guests. A large living room and a music room offer means for many types of social functions.

By no means is Melrose Hall a prison. All young women may have eleven o'clock date privileges on Friday and Saturday nights, and a ten o'clock privilege on Sunday night. Special privileges are often given during the week for special functions. All young women may have four twelve o'clock permissions a term for special social functions. Melrose Hall is filled with a chummy atmosphere which is the result of congenial women living together.

Winter Edition of the

TATLER



William Jewell
College
at
Liberty
Mo.

The recently new Brown Gymnasium, pride of the Athletic Department.



The scene of many thrilling court battles, the home of countless lockers, a fine swimming pool, corrective gymnasium, hand ball courts, it stands as a living tribute to Jewell athletic spirit and history. Beautifully built and conveniently useful.

Not often do students pause in their excursions up the steps to visualize the scene in a work of art. Two cardinal necessities of the campus lend to the dignity of this view—Carnegie Library and Jewell Hall figure much in the molding of impressions at Jewell.

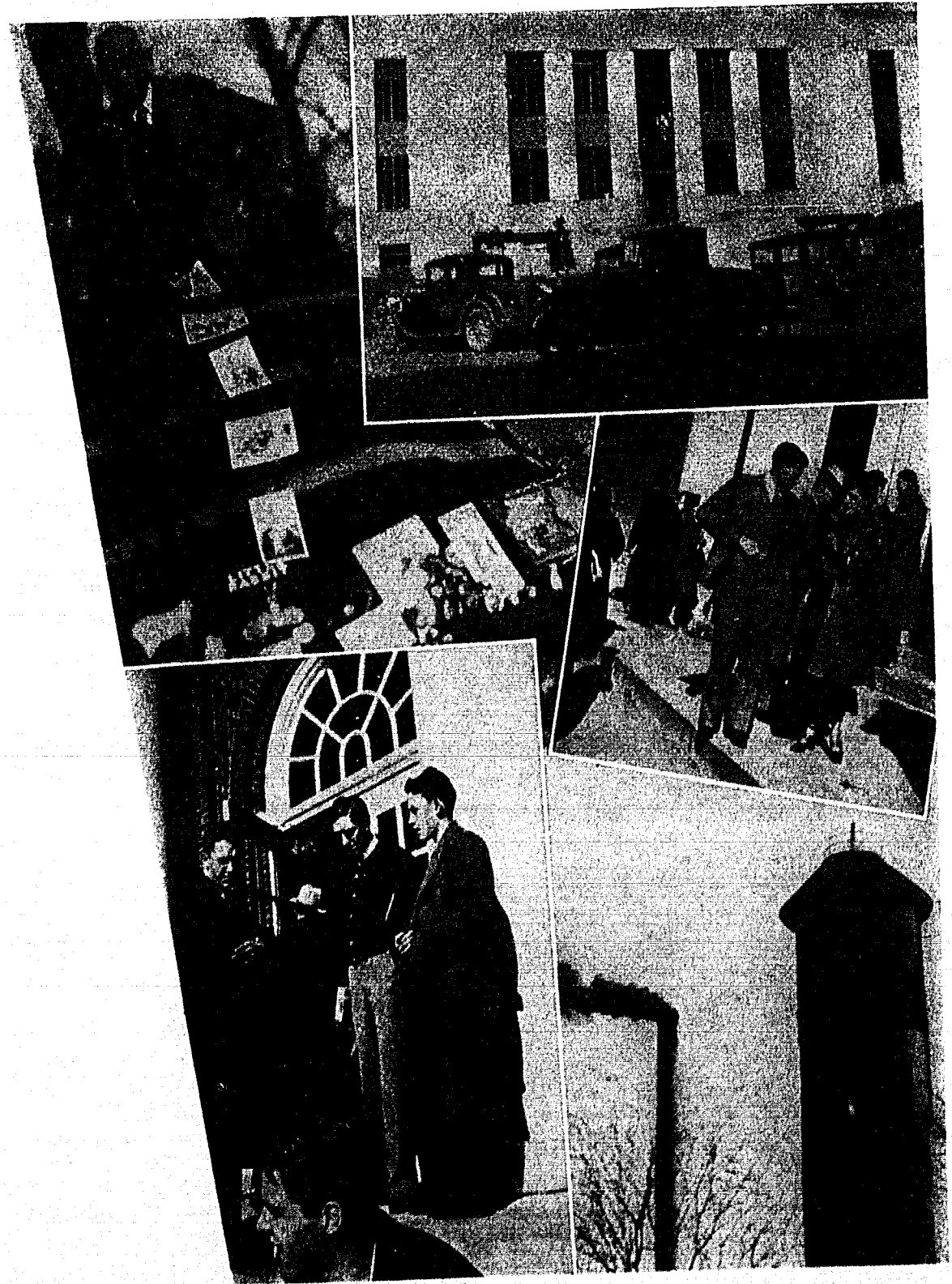
Blanketed by soft, white snow—the Hill still retains its majestic qualities, the massive columns of Jewell Hall retain their guard.





Popular Man
Mr. Bob Johnson

Popular Girl
Miss Sue Fowler



John Phelps Fruit surrounded by birthday gifts; A student drives past the New Court House; Touching scene—Skillet. Waters in gloom; Heavy smoke of Jewell's giant heating plant goes north.

Dr. Herget peaks through the sun into the eye of the camera; Inset: insignificant personages going to chapel; M. K. accompanied.

Mr. Pugh mostly, Allison partly; Whitlatch on a dark day; Cheerful lads: Morgan, Pickhardt.

Eminent physicists: Bailey, Van Trump; Brown guarding cars parked on snow.

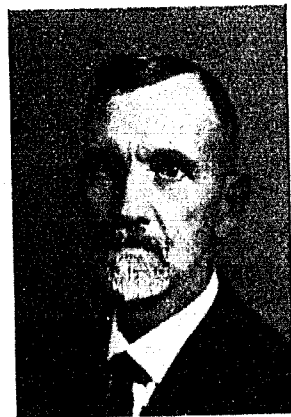


They part smiling! Drop that snowball! Back to Florida. T. J. Shouse about to throw; Shimoda and Key talk during a snow storm; Grin, Sharp. Lucky Williams (?); What form, Lamm! Some New Ely men. More snowballs; The Mansion; Rhodes, where are you leading Frances Marie?



Modern Language plus House; Ambrose.
 That charming couple again; The abode of Mar-
 quette and Monroe; Mr. and Mrs. Ramirez watch
 a snow fight.
 We don't recognize him either; The mighty Stoelt-
 zing; Careful, Morales, Howard can throw too.
 Always at play; Sheik Simrall Shouse, what? Floating
 Power.

The Faculty
 with
 Organizations and
 Activities
 Prominent in the Winter



H. I. Hester, Th.D., is the head of the department of Bible. Thoroughly versed in his subjects from wide reading, he also has the advantage of having traveled throughout the European countries and the Holy Land. He presents the Bible to students in an interesting manner and gains the respect of all who sit in his classes.

The head of the department of biology is C. J. Elmore, Ph.D. He is a learned teacher, and understanding counselor of students, a research worker of energy, a master of many languages, and a gentleman at all times whose being is permeated with Christian ideals.

THE

Miss Helen Churchill, A. B., instructs the Jewell women in biology classes. She is familiar with her subject matter and is able to present it in an attractive way to her under-studies.



George F. Weida, Ph.D., is the head of the chemistry department and also instructor in German. His lectures are filled with illustrious and humorous sayings such as: "no post-mortems".

FACULTY

The most recent member of the faculty to have the degree of Ph.D. conferred upon him is F. G. Edson of the department of chemistry. He does not restrict his work and interests to the college but is active in the college classes of the Baptist Sunday School.

W. C. Smith, Ph.D., brings many outside speakers before the student body, being interested in extra-curricular activities to a great extent. He is head of the department of sociology and economics. Majors are becoming more frequent in his department.



Thurston Isley, M. Ed., is instructor in the department of education. His duties place him in charge of practice teaching which is carried on in the Liberty Public Schools. An amiable professor who always makes a pleasing appearance.

The popular teacher of psychology is J. B. Sullivan, Ph.D. This department will be enlarged next year offering a major in the field of psychology. As head of the department of education, Dr. Sullivan gives excellent advice to those who look forward to careers in education.

John Phelps Fruit, Ph.D., continues to be the youngest member of the faculty although his years number into eight decades. His students develop an appreciation for literature, philosophy, and esthetics. He is head of the English department.



Professor P. Caspar Harvey, A. M., is best known as the teacher of freshman English, a course given over to the composition of the English language. An ex-debate coach, he easily slipped back into that capacity during the absence of Mr. Ewing.

Jewell's debate coach who is on leave of absence is W. Prewitt Ewing, A. B. He is attending George Washington University and working in the comptroller-general's office of the federal government. His debaters and orators consistently rank high in the district and national tournaments.

Directing Jewell dramatic productions is a portion of the field to which Miss Virginia D. Rice, A. M., lends her talents. Her capable leadership produced on the campus this year "Death Takes A Holiday", a play which was a big success in every way. Miss Rice is an instructor in English.



W. Holt Smith, Ph.D., is the head of the department of history and political science. His assignments are characterized by extensive length and his jokes brought forth in the classroom are characterized by the appearance of the raised fingers, which indicate the need of laughter.

Associate professor of history is Ulma R. Pugh, A.M. A southern gentleman, whose pattern all college professors would do well to follow, knows history. In his leisure time one would probably find him on the golf links with the weather permitting participation in that sport.



Frederick M. Derwacter, Ph.D., contends that through the study of Greek the student is more apt to attain accuracy and clearness of thought. His interest is not limited to the subject but extends to the student.



Acting head of the department of modern languages is A. G. Byrns, A.M. Knowledge acquired by study and experience makes him especially capable of teaching German, Spanish, and French. Students revel in his wit.



Acting as assistant professor of Spanish and French during the leave of absence of Clarence Chrisman, Frank Davis, A.M., was retained to fill the vacancy made by the resignation of Mr. Chrisman. Deeply interested in students, he may frequently be found engaging with them in ping pong or basketball in the gymnasium.

B. Edward Denton, A.M., is the head of the department of mathematics. His case is peculiar in that his major is in the field of education, yet he has mastered the field of mathematics. Avocational work takes him into the air waves through his own broadcasting set.

Remaining at the head of William Jewell athletics for many decades, Coach R. E. Bowles, A. B., continues to place teams in the field of combat that fight all the way through and cause people to thrill at the mention of the Big Red Team. Professor Bowles teaches physical education.



Joseph VanTrump, A. B., is instructor in physics and mathematics. A brilliant mathematician while sitting in the classroom as a Jewell student, he was appointed to the faculty the next year after receiving his degree in 1931. His recreational interests in spring turn to golf.

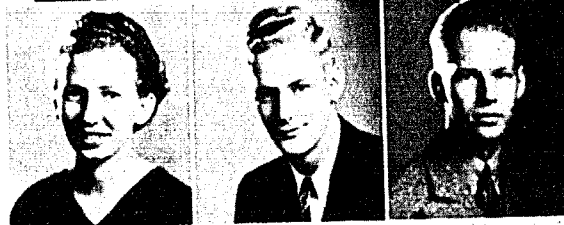
Sophomores



Milton Albright
Kearney

Jack Barrett
Independence

Walter A. Bailey
Casper, Wyoming



Barbara Bogard
Liberty

Thomas Brammer
Butler

Robert E. Bowles, jr.
Liberty



Ralph Brant
Liberty

Estil L. Bruner
Liberty

Lenore Brown
Independence



Constance Burkhardt
Liberty

Helen L. Crockett
Liberty

Helen J. Cederburg
Excelsior Springs



Louella Cummins
Liberty

Mary Ellen Dedman
Plattsburg

W. Nelson Davis
Liberty

Ralph Dunlop
Plains, Kansas

Marjorie DuVall
Holt

Helen Ann Durham
Liberty



Hugh S. Edgerton
Wichita, Kansas

Charles S. Estep
Cameron

Ruth Mildred Engel
Liberty



Dorothy M. Fightmaster
Liberty

Verda L. Fox
Corning, Iowa

Sue Fowler
Elmira



Lloyd George Gibbs
Santa Ana, California

Jack Hall
Fort Morgan, Colorado

George Hale
Springfield

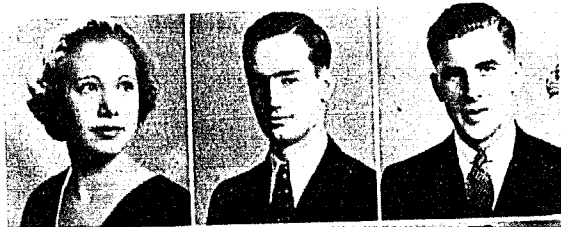


Robert Harris
Holt

Martha Henderson
Liberty

Juanita L. Hensley
Moberly

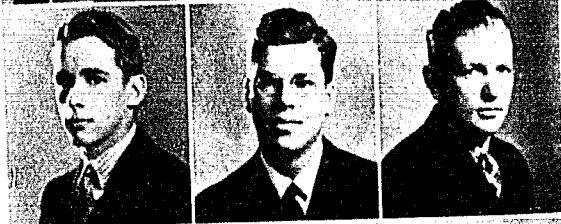




Dorothy Hessel
Liberty

John Clayton House
Kansas City

John Russell Hickerson
Louisiana



Major Hull
Excelsior Springs

William Mann
Kansas City

Robert Kirkland
Liberty



C. A. McIntire, jr.
Carrollton

Lucille G. Miller
Kansas City

Kathryn McKissack
Liberty



Carl A. Minor
Weatherby

Jack Allen Moore
Joplin

Edward Modes
Detroit, Michigan



Milton Morales
Kansas City

John Newport
Buffalo

S. B. Muma
Excelsior Springs



Roland Pickhardt
Santa Ana, California

Ivan H. Rainwater
Bolivar

Jane Quick
Hardin



Jack Reed
Liberty

Arthur Reppert
Kansas City

Mary Alice Reed
Liberty



George Wayne Riley
Junction City, Kansas

Walter Sharp
Liberty

Helen May Sevier
Liberty



T. J. Shouse
Liberty

Lynn Solomon
Lebanon

James S. Simrall
Liberty

Ernest Stoeltzing
Liberty

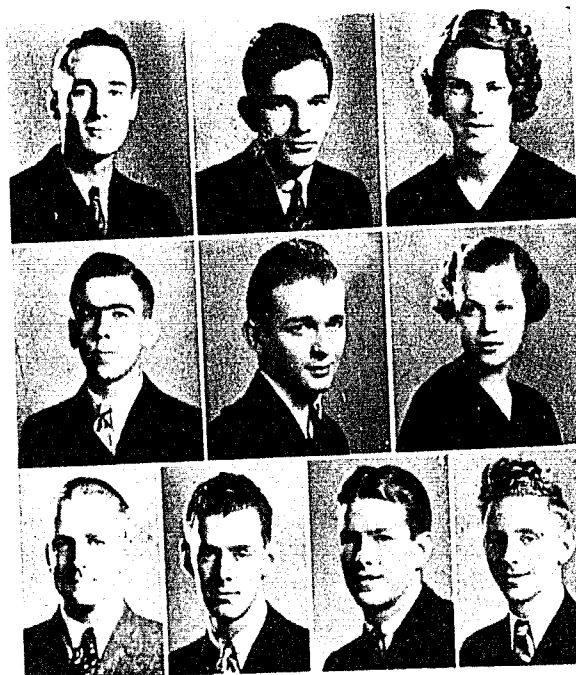


Mildred Stoeltzing
Liberty

Clarence Sutton
Liberty

Mildred Smith
North Kansas City

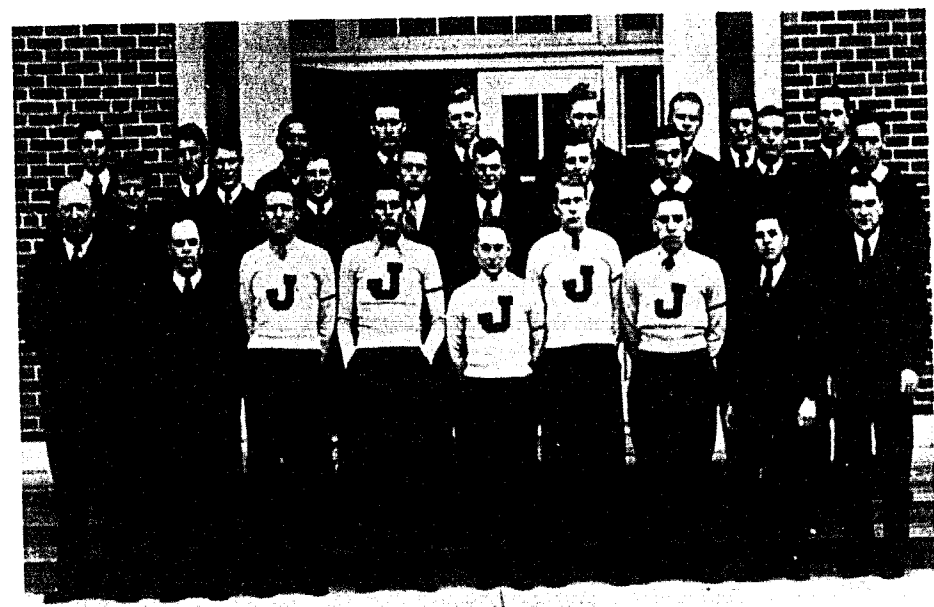
Dorothy Sword
Liberty



James Tibbetts Liberty
 Nellie Marie Turner Weston
 Joe Trotter Carrollton
 Robert Turpin Liberty
 Marjorie Wagy Liberty
 Paul Vinyard St. Louis
 Thomas Paul Whitlatch Liberty
 George Wilson Kansas City
 Clyde Williams Kansas City
 Thomas Sherman Independence

Unphotographed

- | | | | |
|-----------------------|-----------------------|---------------------|---------------------|
| Charles Allen | Winter Haven, Florida | Harold Hurst | Liberty |
| Loyal E. Brown | Lees Summit | Homer Knight | Kansas City, Kansas |
| J. Firth Charlesworth | Kansas City | Thelma Grace Morris | Princeton |
| William Craig | Whiting, Kansas | Joe Morrow | Liberty |
| Fields Duncan | Liberty | Conley Scott | Kansas City |
| Mrs. C. D. Evans | Liberty | Grover Stillwagon | North Kansas City |
| John Wilson Farrell | Kansas City | Adrian Suarez | Liberty |
| Aaron R. Friesen | Liberty | Harley Wendt | Liberty |
| Jake Hufft | Liberty | Henry Cash Wyble | Cyrene |



From left to right, top row: Morales, Ramirez, Suarez, McDougall, Newport, R. Bowles, Renshaw, Bruner, Jackson. Second row: Crowe, M. Hennon, House, E. Monroe, Marquette, Brant, R. DeMasters, B. DeMasters, Wheat. Front row: Coach Bowles, Davis, Whistler, Stirk, Wilson, Solomon, Koch, Pratt, Assistant Coach Maples.

"J" Club

Purpose: To elevate the status of William Jewell College in the world of athletics by encouraging the attendance of high type athletes, promoting scholarship and high ideals among the athletes, and promoting interest in William Jewell athletics among patrons, friends, and alumni of the college.

OFFICERS

- M. P. McDougall, President
- Zack Wheat, Vice-President
- Wade Jackson, Recording Secretary
- Kimzey Davis, Treasurer
- John Newport, Parliamentarian
- W. R. Marquette, Corresponding Secretary
- Mansel Hennon, Historian
- George Koch, Student Representative.
- Robert Bowles, Sergeant-At-Arms

LETTERMEN

Football	Basketball	Track
Bowles	Bowles	Chrane
Brant	Brant	Morales
Davis	DeMasters, R.	Smith
DeMasters, R.	Pratt	Stirk
DeMasters, B.	Newport	Whistler
Crowe	Morales	Solomon
House	Monroe, E.	Wilson, W.
Jackson	Hale	Koch
Ramirez	Marquette	Tennis
McDougall		Monroe, E.
Riley		Renshaw
Suarez		Bruner
Wheat		Coaches: Bowles, Maples, Shoemaker; Hennon, Manager
Wilson		
Hufft		
Taylor		

Basketball

Marquette and Brant Honorary Captains

Because a captain was not elected previously to lead this year's team Jewell did not have a regular captain for the past season. Consequently, the Cardinal basketeers were led in each of their games by some one chosen before each contest by "Dad" Bowles. Along with the selection of a captain-elect the squad chose Bud Brant and W. R. Marquette as honorary captains for the past season. Those who give publicity to individual members of athletic teams often overlook those who are really the most valuable to their respective squads, hence, the choice of Marquette and Brant is an unusual one, inasmuch as the experts and their team mates concur on their respective merits and worth to the team.

Stanley Monroe Captain-Elect

It is a time honored custom that at the close of each athletic season a team should so honor one of its members as to choose him to lead them in the season to come. This choice is usually on the basis of leadership, sportsmanship, and courage. The choice of Stanley Monroe is no exception to the rule. Monroe, a junior forward, playing his first year for Jewell, was perhaps the steadiest and most dependable player on this year's squad. His being selected to exemplify that which his team mates consider ideal is certainly not to be regretted.

SEASON

Jewell 41—Park 15

Since this game was the first inter-school contest ever scheduled by Park the superiority shown by Jewell was not surprising.

Jewell 10—Ottawa 30

As the Cardinals were unable to

make "set-ups" and since the Braves seemed able to score from any position, it is not surprising that the underdogs were able to come through to win. Monroe and Marquette were the outstanding players for Jewell.

Jewell 18—Westminster 37

After holding their own the first half the Cardinals were unable to cope with a brilliant last half rally by the Bluejays, last year's Missouri College Union champions. Avis of Westminster was high scorer with 11 points. Bowles with 7 points and Marquette with 5 were high point men for Jewell.

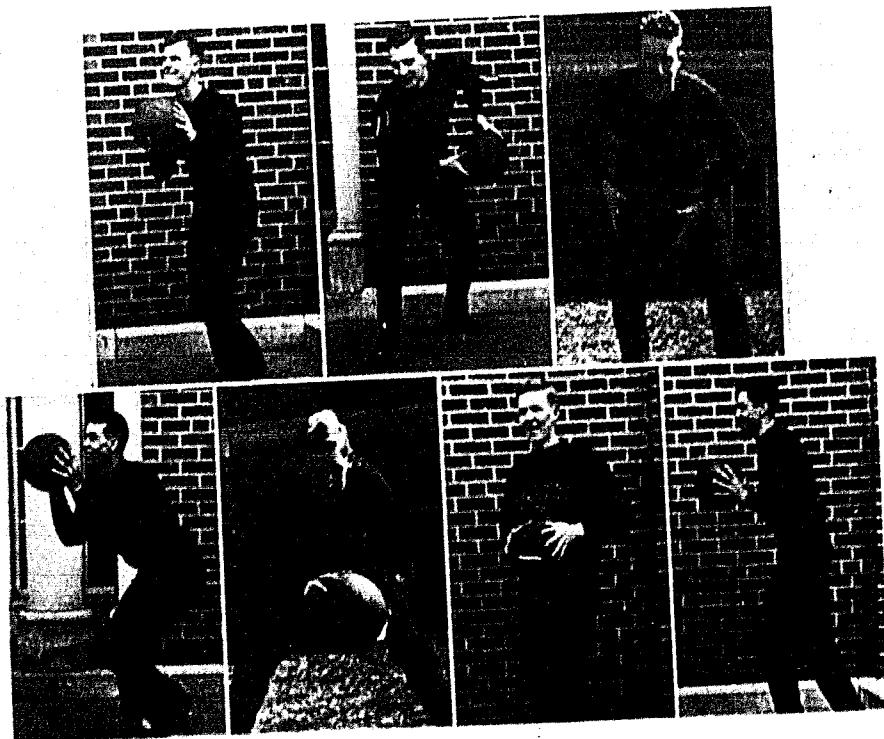
Jewell 35—Park 11

In a return engagement the Cardinals were again able to display their superiority. Morales led the Jewell attack with 10 points.

Jewell 35—Drury 32

Jewell 25—Drury 28

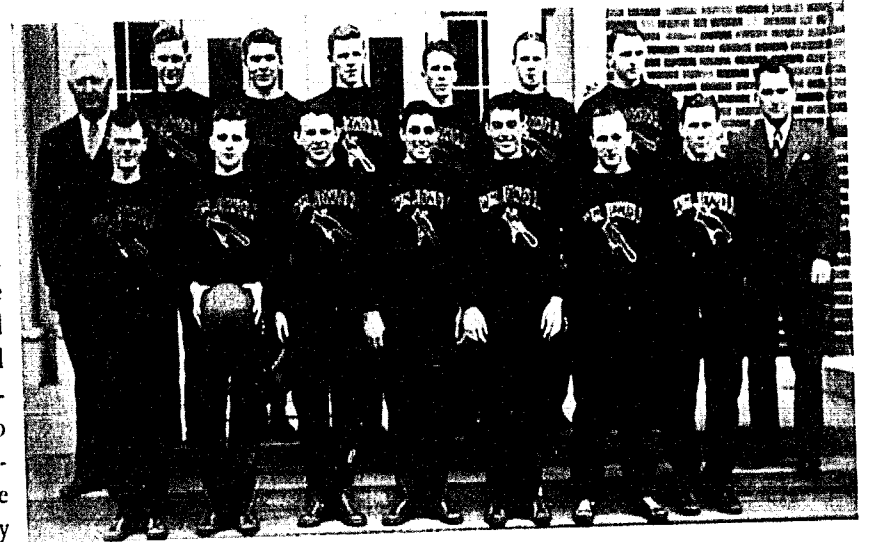
The Cardinals were able to split



MARQUETTE, CO-CAPTAIN
BRANT, CO-CAPTAIN
S. MONROE, CAPTAIN-ELECT

DEMASTERS
B. BOWLES
NEWPORT
MORALES

From left to right, top row: COACH BOWLES, B. BOWLES, C. BOWLES, NEWPORT, S. MONROE, RENSHAW, MARTIN, ASSISTANT COACH MAPLES.
Front row: MARQUETTE, BRANT, SIMRALL, MORALES, DEMASTERS, McCARTY, VOGT.



a double engagement with the Panthers on the Drury court. Stan Monroe's basket shooting was the margin of victory; he connected with 6 field goals. Newport scored 9 points holding the ace, Westover, to 5 points. An inability to solve a much tightened Drury defense accounts for Jewell's failure to repeat its previous night's victory in the second game.

Jewell 39—Chillicothe Business College 25

With Bob Bowles leading the way with 14 points a smoothly functioning Jewell offense was able to smother the C. B. C. Ducks.

Jewell 47—Tarkio 31

It can be said that Jewell played their best game of the season against Tarkio. Monroe was high point man with Bowles and Morales not far behind. Wolfe was the outstanding player for the visitors by virtue of numerous interceptions of Cardinal passes.

Jewell 21—Drury 35

North, diminutive Panther guard, who made 16 points, was Drury's margin of victory. The Cardinals' inability to tally with numerous close shots in the second half contributed to Drury's superiority.

Jewell 32—Westminster 34

Ray DeMasters' 14 points was not a sufficient margin to prevent the Bluejays from eking out a narrow 2 point victory. This was another of those see-saw contests with each team repeatedly going into the lead.

Jewell 26—Central 32

Central's victory was the major

upset of the season. Bob Bowles was the star of the game with 12 points.

Jewell 31—Missouri Valley 26

This game was even more decisive than the previous encounter, although the game was played at Marshall. Jewell's defense functioned better than in any other game during the season. Bowles and Morales shared scoring honors with 9 points apiece.

Jewell 22—Tarkio 20

In the roughest game of the season Jewell sprang into an early lead and stood off a late rally to nose out a repeat victory over Tarkio. Bowles was high scorer with 8 points.

Jewell 31—Central 23

An impregnable defense coupled with 12 points by Morales and 10 by Monroe proved too much for the Eagles. The work of Newport recovering rebounds was outstanding for Jewell.

Jewell 26—Missouri Valley 25

After a discouraging start the Cardinals managed to nose out a hard fought victory. As the lead was shared numerous times the outcome of the issue was never certain.

Morales' 7 points was high for the encounter.

Jewell 25—Rockhurst 38

The Cardinals after giving the lead to the Hawks were never able to recover.

Erratic team play is probably responsible for Jewell placing only one member of its basketball squad on the mythical M.C.A.U. All-Stars. Bob Bowles rugged center was only edged out by Berryman of Westminster by reason of superior height from being placed in his regular position.

M.C.A.U. Tournament

After an auspicious start with a 55-41 win over Culver-Stockton in the opening round Jewell faded badly in the second round against Drury who lost a close hard fought battle in the finals to Westminster.

Although Jewell was leading Missouri Valley 15 to 12 at the half in the encounter for third place, the Cardinals lacked the stamina to withstand a second half rally by the Vikings and lost 22 to 26.

Morales of Jewell was unofficial high scorer of the tournament with 20 points.

Men's Glee Club

With approximately thirty Jewell men listed in its roll this year, the Men's Glee Club has performed in a most creditable way. Besides the concert tours regularly made by the organization, this year also included a radio program over station W9XBY.

Mr. David Grosch, head of the William Jewell Music Department, also directs the Club. He is outstanding among musical directors and teachers in Kansas City, was dean of the Conservatory of Music at Baker University, and has taught at Chicago Musical College and Bush Conservatory. His wide preparation in the field of music includes having studied voice with Adolphe Shulze of Berlin, piano with John Petrie Dunn of Edinburg, oratorio with Dr. Charles Allum of London, opera with Hermann Devries of Chicago, and composition with Samuel De Lange of Stuttgart.

Besides Glee Club and Band work, Mr. Grosch teaches music appreciation and gives special voice lessons to individual students.

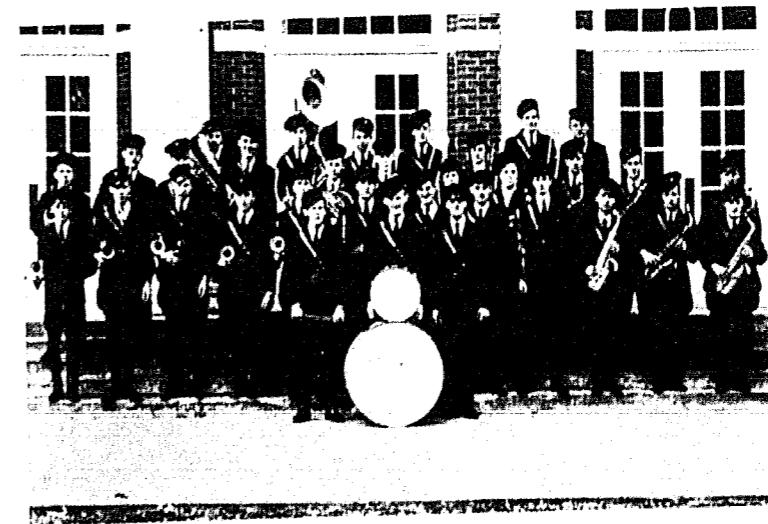
The Girls' Glee Club was disbanded this year after several years' activity.

The Band

The William Jewell College band reached a new peak this year in both appearance and performance. New uniforms and new music provided the incentive for an enthusiasm rarely attained among members of the band. In addition to playing at all the home football games, the band accompanied the team on all but two trips away from home, creating pep and enthusiasm and presenting well worked-out drills during the half.

Pep meetings and parades last Fall were greatly improved by the appearance of the band which provided both color and music and an atmosphere of pep and enthusiasm.

Dick Chandler acted as student conductor and appeared before the band at all performances. He directs as a veteran band master and a great amount of the success of the band was due to his leadership.



Men's Glee Club

With approximately thirty Jewell men listed in its roll this year, the Men's Glee Club has performed in a most creditable way. Besides the concert tours regularly made by the organization, this year also included a radio program over station W9XBY.

Mr. David Grosch, head of the William Jewell Music Department, also directs the Club. He is outstanding among musical directors and teachers in Kansas City, was dean of the Conservatory of Music at Baker University, and has taught at Chicago Musical College and Bush Conservatory. His wide preparation in the field of music includes having studied voice with Adolphe Shulze of Berlin, piano with John Petrie Dunn of Edinburg, oratorio with Dr. Charles Allum of London, opera with Hermann Devries of Chicago, and composition with Samuel De Lange of Stuttgart.

Besides Glee Club and Band work, Mr. Grosch teaches music appreciation and gives special voice lessons to individual students.

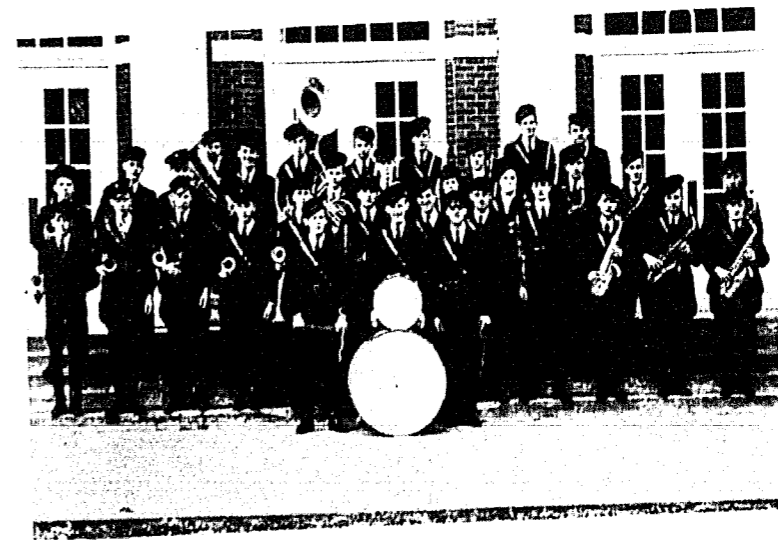
The Girls' Glee Club was disbanded this year after several years' activity.

The Band

The William Jewell College band reached a new peak this year in both appearance and performance. New uniforms and new music provided the incentive for an enthusiasm rarely attained among members of the band. In addition to playing at all the home football games, the band accompanied the team on all but two trips away from home, creating pep and enthusiasm and presenting well worked-out drills during the half.

Pep meetings and parades last Fall were greatly improved by the appearance of the band which provided both color and music and an atmosphere of pep and enthusiasm.

Dick Chandler acted as student conductor and appeared before the band at all performances. He directs as a veteran band master and a great amount of the success of the band was due to his leadership.



Ministerial Group

The Ministerial Group is an organization in which students may secure professional guidance in meeting the problems of the Christian minister in modern life.

Since the present group was organized in 1923, it has been one of the liveliest and most efficient organizations on the "hill".

Every Tuesday afternoon at three o'clock finds the group meeting in Philomathic Hall. The program consists of addresses by various distinguished speakers and student discussion. It has largely been through the efforts of Dr. Hester, the sponsor, and Dr. Herget that these outside speakers have been brought to the campus. In most cases these persons have not only spoken to the Ministerial Group but also to the student body. The group includes: Dr. Everett Gill, Southern Baptist Commissioner in Southern Europe; Dr. Rufus W. Weaver, Pastor First Baptist Church, Washington D. C.; Dr. Austin K. de Blois, President Eastern Baptist Theological Seminary, Philadelphia; Dr. John R. Sampey, President of the Southern Baptist Theological Seminary at Louisville and President of the Southern Baptist Convention; Dr. Albert W. Beaven, President Colgate-Rochester Divinity School, Rochester; Dr. Edgar Godbold, Executive Secretary of the Missouri Baptist General Association; Dr. Morris Ford, Pas-



Dr. H. I. Hester
Sponsor

(58)

tor of the Calvary Baptist Church, Kansas City; Dr. A. B. Dobb, Instructor in North China Theological Seminary; and Mrs. Elizabeth Finn, Representative of the American Baptist Publications Society.

Officers for the group are elected twice each year. Those serving the first half of the year were:

August Hintz, President
Rollin Burhans, Vice-President
Robert Benedict, Secretary-Treasurer
Harold Hurst, Chorister
Andrew Moorehead, Pianist

Those serving for the last half:

Rollin Burhans, President
Hale Dixon, Vice-President
Bert Duncan, Secretary-Treasurer
Robert Hyatt, Chorister
Thomas Whitlatch, Pianist

*For I am not ashamed of the Gospel of Christ
for it is the Power of God unto Salvation.*

—Romans 1:16.

Unphotographed are: Maples, Cunningham, Friesen, Hurst, G. Knight, Mikalchuk, Moore, Stillwagon, Turner, Vine, Wendt, Wyble, Ross, Probst, Bush, Timbrook, Allison, Kirchner, Sword, Turnage, Lemons, Burford, Burtch, Scott, Brown.



BAILEY
BENEDICT
BRUNE
BURHANS
CORMACK
CROZIER

CRYSTAL
DIXON
DUNCAN
DUNLOP
EDWARDS
ELLIOT

EVANS
FOLEY
GARDNER
GIBBS
HENNON
HINTZ

HOWARD
HUNT
HYATT
KEY
KING
KITRELL

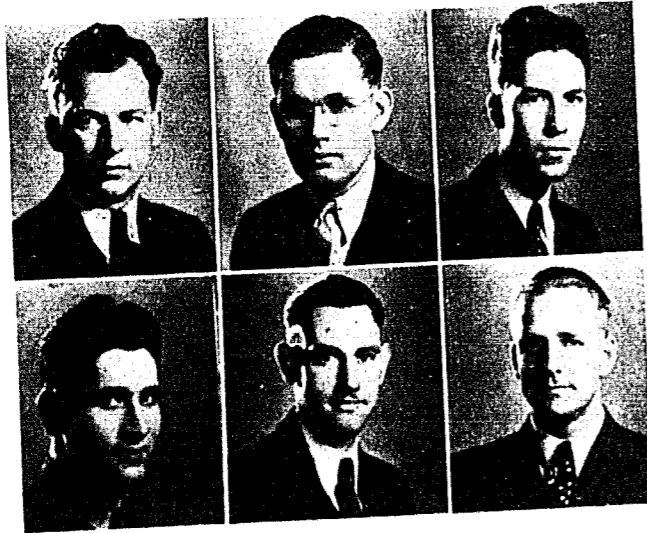
LEE
LEWIS
LOGAN
MAGRUDER
MILLER
MOOREHEAD

PICKHARDT
PORTER
L. PRATT
B. PRATT
QUICK
SODEMAN

THURSTON
WHISTLER
WHITLATCH

(59)

Alpha Zeta Pi



BURHANS
RAMIREZ

GARDNER
SHANK

FOLEY
WHITLATCH

The Alpha Zeta Pi was organized in April, 1924. The motto of the club, taken from Paul's exhortation to Timothy (2 Tim. 1:6), "to stir into flame the gift of God within you", is indicative of the object of the organization which is to stimulate zeal for Christian fellowship.

ACTIVE MEMBERS:

Rollin S. Burhans—President
Earl Gardner—Vice-President
Paul Whitlatch—Treasurer
Robert Kittrell—Secretary
Carol Lemons
James Lewis

Cecil Logan
Aaron Friesen
Grover Stillwagon
Harold Hurst
Glenn Knight
Donald Vine
Olin Turner
Jack Foley
Ciro Ramirez
Ralph Shank

Honorary Members:

Dr. Frank G. Edson
Dr. Frederick M. Derwacter

The William Jewell Press

From a small bindery that a professor began eighteen years ago to a large and modern equipped printing and photo-engraving plant is the record of the William Jewell Press, owned and operated by William Jewell College and managed by Harvey J. Ray.

The Press has always operated without cost to the college and is operated as any commercial plant.

In 1921 Mr. Ray was made manager and from that time on the Press made progress and advanced rapidly to a prominent position in the commercial printing field. It is a tribute to Mr. Ray's ability as a printer and salesman that the Press can and does occupy this position. At first it seems impossible that one can use students and do work that will stand competition from larger plants employing experienced printers. The Press is entirely self-supporting, paying all its salaries and expenses.

But if it is a success financially it holds a greater place in William Jewell because of its employment of students and the financial help it has given them. More than 100 students have been graduated from the college as a result of their earnings in the Press. Over 200 more have worked in the Press for shorter periods of time. More than \$54,000 has been

paid to students during the eighteen years and most of this in the last 15 years.

The Press does all the printing for the college and since 1923 has been printing the college annual, the *Tattler*, which received All-American rating in 1925 and has been given this high rating each year it has been entered since then. The Press reached its highest point in 1929 when it printed seven annuals for different colleges and high schools and this year with the printing of five college annuals is making a bid to return to its former prominence.

In January the Press installed its photo-engraving plant which Mr. Ray believes will open more avenues for business and the employment of students. This year the engravings for a high school annual will be made. With the photo-engraving equipment a Leica camera was purchased which will enable the Press to enter the photographic field commercially.

Mr. George C. Beamer has been associated with the Press since 1925 when he enrolled as a freshman in Jewell. Upon his graduation in 1929 he became superintendent of production and will now direct the work in photography and photo-engraving.



Harvey J. Ray
Manager



George C. Beamer
Foreman

Pi Kappa Delta



AMERY BOWERS BREWER BURCH C. BURKHARDT
 COPE HINTZ MAGRUDER PREWITT

Pi Kappa Delta, a national honorary forensic society with 148 chapters in 40 states and Porto Rico, was established in 1913 to coordinate and to stimulate interest in forensic activities among American colleges. Membership is awarded by its local chapters upon the basis of intercollegiate competition standards prescribed by the national organization.

The local membership composes the Missouri Delta chapter, established in 1922 under the forensic directorship of Professor P. Caspar Harvey. W. Prewitt Ewing is the debate

coach now, but has been away from the campus this year on a leave of absence to Washington, D.C.

Mary Belle Burch is president of Missouri Delta chapter.

The members:
 Joe Amery, Jim Bowers, Claire Brewer, M. B. Burch, A. Burkhardt, C. Burkhardt, Jim Cope, Jack Dudley, Frances Hall, Burnett Macgruder, John Newport, Grace Prewitt, Jack Reed, Lynn Solomon, Joe Trotter.

Men's Biology Club and Beta Lambda



BARRETT HALE KNIGHT RAINWATER WHITLATCH WETZEL AULL
 BURKHARDT SAUNDERS STURGES TRUEX

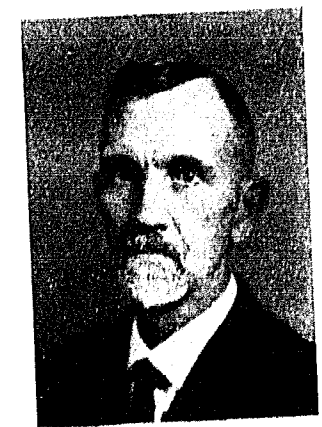
A chapter of the national fraternity, Beta Beta Beta, was organized at William Jewell April 12, 1927. Connection with the national organization was severed in 1934-35 and the men who were interested in the study of the biological sciences immediately formed the Men's Biology Club. The qualifications for membership in this club are based upon one's desire to further biological investigation, and one's scholastic standing.

Officers of the club for 1935-36 were Dr. C. J. Elmore, sponsor; James M. Smith, president; Forrest Aull, treasurer; T. P. Whitlatch, secretary. Four were initiated into the membership, namely; G. A. Sword, Jack Barrett, Grover

Stillwagon, and Vernon Knight. Other members of the club are: Robert Browning, Ralph Cooper, Nevin Wetzel, Ivan Rainwater, and George Hale.

BETA LAMBDA

The Beta Lambda Club, girls' honorary biology club, meets every other Wednesday at the home of Dr. Elmore. The roll call is answered by current events by each member. The topics for the programs are of a biological nature. The officers: president, Viola Sturges; secretary, Dorothy Truex; treasurer, Frances Jean Saunders; sponsors, Dr. C. J. Elmore and Miss Helen Churchill.



Dr. C. J. Elmore



Miss Helen Churchill

Pi Gamma Mu



The Missouri Epsilon Chapter of Pi Gamma Mu was organized in William Jewell College in January, 1930, under the sponsorship of Dr. Cloice R. Howd, head of the department of sociology and economics.

The particular purpose of Pi Gamma Mu is to send out from our colleges and universities young men and women imbued with social idealism and trained to be scientific in their thinking on social questions. This organization does not restrict itself to one single field, but interprets social science in the widest sense. This will assure cooperative thinking and an approach to social questions from all angles.

Unphotographed are: Bowers, W. Browning, Morgan.
Faculty members: Pugh, W. Holt Smith, W. C. Smith.
Officers: President, Bowers; Secretary, Koch.

Photographed from left to right: Amery, G. Aull, Beck, Burhans, Duncan, Hintz, Hockett, Koch, Prewitt, Shimoda, Stigers, Waters.

International Relations Club

The Jewell chapter is one of the hundreds of International Relations Clubs located throughout the world. The aim of the Club is to bring to the students a more comprehensive knowledge of international affairs. The Club annually brings outstanding speakers to our campus and meets each month. Lectures and open forum discussions are held. Membership for the current year has been the largest in several years.

Much interest was taken by the Club this year in the Italo-Ethiopian struggle and the policies taken by the League of Nations.

OFFICERS

President	William Waters
1st Vice-President	William Browning
2nd Vice-President	Kimzey Davis
Secretary	Else Byrns
Treasurer	Mary Belle Burch
Faculty Advisor	Dr. W. Holt Smith

Members unphotographed are: Ralph Brant, T. C. Brammer, Dudley Durham, Sue Fowler, Jake Hufft, William Key, W. R. Marquette, Joe Morrow, John Newport, Bill Schaefer, James Simrall, Helen Sevier, Mildred Smith, Joe Trotter, and Paul Whitlatch.

Photographed from left to right:
Amery, Aull, Beck, Browning
Burch, Burhans, Burkhardt, Byrns
Chrane, Crawford, Cummins, E. Davis
K. Davis, Engel, Fightmaster, Hall
Hintz, Koch, Logan, S. Monroe
Murrell, Palmer, Patterson, B. Perry
Pinkerton, Proctor, O. Quick, Reed, Shimoda
Shouse, L. Smith, Stigers, Truex, Waters



Sigma Pi Sigma



Betts
Hilton
Fowler
Sharrah
T. J. Shouse

Sigma Pi Sigma, national honorary physics society, was founded in 1921 at Davidson College, Davidson, North Carolina. It has expanded until at the present time there are twenty-eight chapters in the United States and one chapter at the University of the Philippines. The Xi chapter was founded at William Jewell on May 20, 1930.

The society serves as a means of awarding distinction to those of high scholarship in physics, promotes interest in the advanced study of the subject, and stimulates and encourages a spirit of cooperation and friendship among those who have displayed marked ability in this study.

The chapter meets bi-monthly in its chapter room in Marston Hall at which time lectures and discussions on contemporary topics in physics are held. The special activities of the chapter for the year include inspection trips to the radio station KMBC, the Ford assembling plant, the T. W. A. base, and the Power and Light Building and radio station W9XBY, all of which are in Kansas City. Through the courtesy of the chemistry fraternity, Theta Chi Delta, an inspection trip to the Sheffield Steel Plant, also in Kansas City, was made.

Four new members were initiated into the organization this year. The undergraduate members for the year are Richard C. Hilton, Paul C. Sharrah, Miss Sue S. Fowler, Miss Ida C. Goynes, C. Glenn Betts, and T. J. Shouse. Professor J. E. Davis, Professor J. H. Van Trump, and Dr. Frank G. Edson are the faculty members.



J. E. Davis



Joe Van Trump

Theta Chi Delta



F. Aull
Betts
Renshaw

Bogard
Cope
Shanks

Alpha Nu chapter in Theta Chi Delta celebrated its first anniversary May 2, 1936, having been installed in 1931.

One cannot think of Theta Chi Delta without thinking of the Khem Club which flourished before affiliation was made with a national organization.

Drs. Weida and Edson, after successfully sponsoring the Khem Club, saw the many advantages of national affiliation. It was through the efforts of these eminent chemists that Alpha Nu chapter came to be installed at William Jewell College. Since its installation there have been 41 student chemists who have been initiated into active membership in Alpha Nu chapter. These students have been majors in chemistry, have had a "B" average and were taking their 5th term of chemistry.

In January Theta Chi Delta visited Sheffield Steel Corporation and in April attended the spring meeting of the

American Chemical Society which was held in Kansas City.

The officers and members are: Dale Bogard, president; Ralph Shank, vice-president; Fred T. Renshaw, secretary; Jim Cope, treasurer; Forrest J. Aull, Walter Bailey, Jack Barrett, Clyde Brower, and Ralph Cooper.

Sponsors: Dr. Geo. F. Weida and Dr. Frank G. Edson.



Dr. Geo. F. Weida



Dr. Frank G. Edson



Bill Waters
Editor '36



Else Byrns
Editor '35



George Aull
Business Manager

The Student

THE 1935 STAFF

Editor-in-Chief..... Else Byrns
 Associate Editor..... William Waters
 Business Mgr..... George Aull
 Sports Editors..... Kimzey Davis,
 Wade Jackson
 Literary Editor..... Clyde Williams
 Dramatics Editor..... Alice Hockett
 Forensic Editor..... Annajane Burkhardt
 Feature Editor..... Myrtle Bell
 News Editor..... Dorothy Sword
 Exchange Editors..... Mary M. Westbrook,
 James Cope, Frances Hall
 Religious Editor..... Burnett Magruder
 Contributing Editors..... William Browning,
 Lowell Smith, Robert Harris
 Sidelights..... Kenneth Baner

THE 1936 STAFF

Editor-in-Chief..... William Waters
 Associate Editor..... Howard Rhodes
 Business Mgr..... George Aull
 Make-up Editor..... Bill Schaefer
 News Editor..... Else Byrns
 Sports Editors..... Kimzey Davis,
 James Tibbetts
 Reportorial Staff..... Kenneth Baner,
 Wade Jackson, Jack Reed, Tom Pryor,
 Robert Harris
 Forensic Editors..... John Newport,
 A. Burkhardt

Dramatics Editor..... Alice Hockett
 Literary Editor..... Austin Edwards
 Exchange Editor..... Clyde Williams
 Society Editor..... Myrtle Bell
 Feature Editors..... Lowell Smith,
 D. Donaldson, Bill Browning
 Photographer..... Joe Trotter

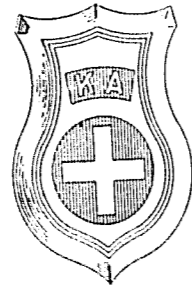
For the first half of the year the paper was edited by Else Byrns, and she is deserving of much credit for the fine publication which she and her staff produced. It had its value not only for news but for articles of literary merit.

For the last half of the year, William Waters was editor of the *Student*. The student body was greeted with a new system of make-up and headline writing which had been unknown for several years. In April there appeared the famous "Yellow Sheet" which is traditional on the William Jewell campus. The paper was wide open to student expression and rarely an issue passed without some uplifting article written by a member of the student body. To Waters and his staff go congratulations for an undoubtedly good paper.

Not only from the editorial standpoint but also from the business end has the *Student* functioned properly this year. Under the direction of George Aull as business manager, the *Student* was placed upon a sound business basis.

Social
 Fraternities

Kappa Alpha



The Kappa Alpha Order was founded at Washington and Lee College in the year of 1865. General Robert E. Lee was the spiritual founder of that group and chivalry was the motive of the group.

On Saturday, January 5, 1887, a group known as the "Invincible Twenty-three" was installed as Alpha Delta chapter of the Kappa Alpha Order. Alpha Delta was the thirty-second charter issued by a fraternity which in all had granted sixty-eight.

Alpha Delta now occupies the first chapter house constructed at William Jewell College; it is admirably designed for fraternity usage and in itself is expressive of the ideals and traditions of its owners. It serves each year as a picturesque setting for their annual Mother's

Day Tea and parties.

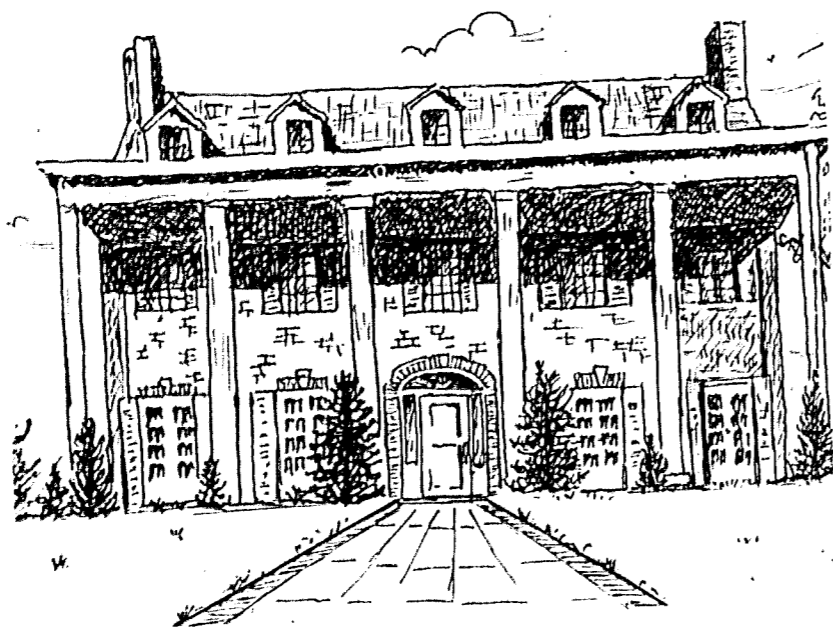
The flowers are the Magnolia and Crimson Rose.

OFFICERS

George C. Koch, jr., president
 Robert M. Johnson, jr., vice-president
 Charles B. Paisley, secretary
 Clyde E. Williams, corresponding secretary
 Ben Perry, jr., treasurer

ACTIVES

George Koch, jr.	Jake Huff
Robert Johnson, jr.	Robert Crowe, jr.
Charles Paisley	Stanley Patterson
Clyde Williams	Arthur Reppert
Jack Martin	Walter Sharp
Ben Perry, jr.	Dudley Durham
John Hickerson	Robert Bowles, jr.



Alpha Delta Chapter

Photographed from left to right:

ALSPAUGH	BOWERS
BEVERLY	C. BOWLES
R. BOWLES	CROWE
COLEMAN	DUDLEY
DURHAM	HICKERSON
ELLIOT	HUFFT
L. JOHNSON	KNIGHT
R. JOHNSON	KNIGHT
KOCH	LEASK
LAWSON	MAIN
MARQUETTE	MCINTIRE
MARTIN	PAISLEY
PATTERSON	J. PERRY
B. PERRY	REPPERT

RUTLEDGE

SHARP
SHAW

SPRAGUE
WILLIAMS

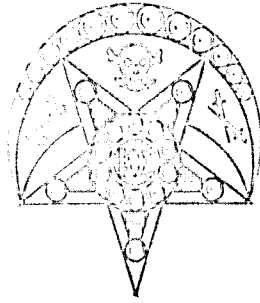
WILSON

PLEDGES

Victor Knight
 Vernon Knight
 Lee Johnson
 Biron Bush
 Jack Dudley
 Wallace Rutledge
 W. R. Marquette
 Jack Farrell
 Charles Shaw
 Jack Perry
 Robert Lawson
 Kenneth Alspaugh
 Chester Bowles
 James Bowers
 Edgar Main
 Frank Leask
 Albert Sprague
 Volna Beverly
 Grant Coleman
 George Wilson
 Edwin Elliot



Kappa Sigma



Alpha Omega of Kappa Sigma was originally founded at the University of Virginia by the "Five Friends and Brothers" in 1869. Since its inception it has spread throughout the country until there are at present 108 active chapters.

The Alpha Omega chapter of Kappa Sigma was established in 1897. From this chapter have gone many outstanding men including Professor Manley O. Hudson, and Clarence Cannon.

The flower is the Lily-of-the-Valley. The colors are scarlet, white, and green.

ACTIVES

Ralph Brant
Robert DeMasters
Ray DeMasters
Bill Mann
Ed McDonald
James Simrall

PLEDGES

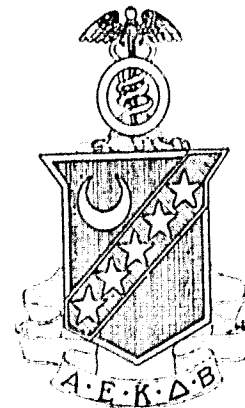
Paul Thompson
Claude Boner
Carl Minor
Henry Stanley
Lloyd Troxler
Byron Eberts
Norman McDonald
Zack Wheat
Harold Taylor
Charles Stone
Bill Rhoades
Robert Harris
Milton Albright
Marvin Walker
Marvin Sands
Richard Stirk
Clarence Sutton
James Tibbetts



Alpha Omega Chapter

Photographed from left to right:

ALBRIGHT	BONER	BRANT	R. DEMASTERS	EBERTS	HARRIS
MANN	E. McDONALD	N. McDONALD	MINOR	NEWBILL	RHOADES
SANDS	SIMRALL	STIRK			
STANLEY	SUTTON	TAYLOR	TIBBETTS		
TROXLER	WALKER	B. DEMASTERS	WHEAT		



Phi Gamma Delta



The fraternity of Phi Gamma Delta is the thirteenth oldest Greek letter society in America having been founded at what is now Washington and Jefferson College at Canonsburg, Pennsylvania, on May 1, 1848. In 1875 the Zeta Phi fraternity was founded at William Jewell. In 1886 the Zeta Phi fraternity became the Zeta Phi chapter of Phi Gamma Delta and has continued to prosper, celebrating the fiftieth anniversary of its nationalization this spring.

The local chapter of Phi Gamma Delta is built upon sound traditions and ideals that it has strived to uphold through half a century. In the course of its existence the Zeta Phi chapter has initiated 484 men, 15 of whom are listed in the current edition of Who's Who.

Twenty-three "Fijis" have been members of the William Jewell faculty.

Some prominent men who have worn the "Fiji" pin are: the late Calvin Coolidge, past President of the United States; Thomas Marshall and Charles Warren Fairbanks, former Vice-Presidents of the United States; Newton D. Baker, former secretary of War; the authors, Lew Wallace, Edward Eggleston, and Lloyd Douglas.

Officers of the local chapter for the past scholastic year were: President, William G. Schaefer; Treasurer, William Waters; Recording Secretary, George Aull; Corresponding Secretary, Richard Hilton; Historian, J. Kimzey Davis.



Zeta Phi Chapter

Photographed from left to right:

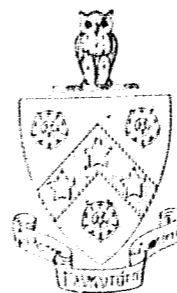
- | | |
|----------|------------|
| ARNOLD | BAILEY |
| G. AULL | BRAMMER |
| BREWER | BUTLER |
| B. BURNS | DAVIS |
| HALL | HOUSE |
| HILTON | HOWARD |
| HULL | MADREY |
| LAMM | MERRITT |
| E. MODES | PALMER |
| W. MODES | PHILBRICK |
| SCHAEFER | SMITH |
| SHOUSE | STOELTZING |
| TURPIN | |
| WATERS | YOUNG |

ACTIVES

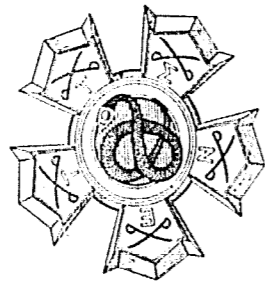
- George Aull
- T. C. Brammer
- Clair Brewer
- J. Kimzey Davis
- Jack Hall
- Richard Hilton
- Jack House
- Major Hull
- Edward Modes
- Judson L. Palmer, Jr.
- Bill G. Schaefer
- T. J. Shouse
- Robert Turpin
- Paul Vineyard
- William B. Waters

PLEDGES

- | | |
|------------------|-------------------|
| Price Philbrick | Darrell Fenton |
| Fred Rosencrans | Bill Modes |
| Jim Merritt | Harold Young |
| Bill Burns | Dick Noble |
| Judson Howard | Russell Smith |
| Bob Mabrey | Ernest Stoeltzing |
| Olin Bock | George Stepp |
| Loren Butler | Edward Bailey |
| Harold Lamm | R. B. Miller |
| Gardner Thurston | Robert Kelley |
| Lloyd Kelley | Jack Arnold |



Sigma Nu



The Sigma Nu Fraternity was founded January 1, 1869, at the Virginia Military Institute. Beta Xi Chapter, number forty-three in the United States, was founded January the fifth, 1894, with eight charter members.

The colors of the fraternity are black, white and gold; the flower is the white rose.

The House Mother is Mrs. Frank Fristoe.

The officers for the past year were: President, Harry Trotter; Vice-President, L. M. Proctor; Secretary, Jack Reed; Treasurer, Joe Trotter.

CHAPTER ROLL

Bill Browning
Jim Cope
L. M. Proctor

Jack Reed
Joe Trotter
Harry Trotter

PLEDGES

Kenneth Banes
George Clark
Hugh Edgerton
Gene Garrett
Bob Johnson
Bill Key

Larry Sadler
Tom Scruggs
Tom Sherman
George Weinhold
Maurice Winger

FRATRES IN URBE

Frank Hamilton
T. J. Wornall
Finley Mason
Harold Anderson
Clay Bailey
Frank Millen

Sam Church
Robert Sevier
J. Frank Davis
A. G. Byrns
Leo Maher
Ralph Brandon



Beta Xi Chapter

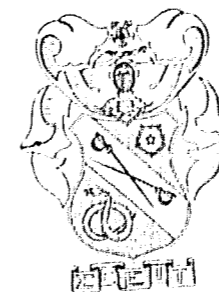
BANES
W. BROWNING
CLARK

COPE
GARRETT
JOHNSON

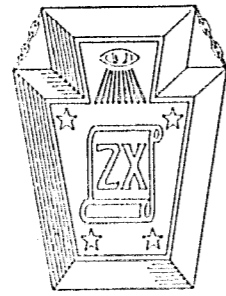
PROCTOR
REED
SADLER

SHERMAN
SCRUGGS
H. TROTTER

J. TROTTER
WEINHOLD
WINGER



Zeta Chi



Zeta Chi was founded at William Jewell College, on April 20, 1917. On that day was Zeta Chi formally recognized as a fraternal order by the college, and was granted a charter.

Two years previous, Zeta Chi had existed *sub rosa*, pledging and initiating men and conducting regular chapter meetings. Then with its birth on that day in April, it immediately left its old headquarters in New Ely to take up new residence at 402 East Mississippi Street, as a chartered fraternity. It began much like its fellow Greek organizations, it grew and crowded quarters caused a new chapter house to be selected, the present home at 225 North Lightburne street, in 1920.

Zeta Chi has its Alumni headquarters in

Kansas City, Missouri, which issues newsletters and conducts fraternity business among its two hundred fifty-three members.

ACTIVES

C. Lowell Smith
 Joe Morrow
 Leon Beck
 Wayne Riley
 Cyrus Riddell
 Winfrey Garner
 Howard Lee

PLEDGES

Henry George
 Delbert Crouch
 Bill Woolfolk
 Austin Edwards



(78)

Jewell's Local Fraternity



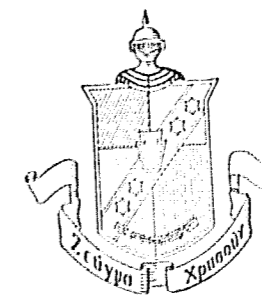
BECK

RILEY

LEE

L. SMITH

RIDDELL



(79)

Interfraternity Council

Organized in 1924, to bind the five fraternities in a harmonious spirit, the Interfraternity Council has been functioning since then without notoriety, but with precision, in smoothing maladjustments in interfraternity affairs. The Interfraternity Council decides on all policies that affect the fraternities as a whole. Intramural sports are under the guidance of the Council as well as the problems of rushing, dating, goodwill, and other cooperative relations.

On the Council sit three faculty members, who give senatorial advice when parliamentary procedure runs amuck. They are Messrs. Byrns, J. E. Davis, and Isley.

The Council is composed of two mem-

bers of each chapter who act as intermediaries between the Council and their respective chapters and are granted the power to use their own judgment in determining fraternity policies. C. Lowell Smith, Zeta Chi, was elected President and ably presided in that capacity. Edward McDonald, Kappa Sigma, was elected Vice-President and Harry Trotter, Sigma Nu, received the office of Secretary-Treasurer. Other members are: Howard Lee, Zeta Chi, Robert DeMasters, Kappa Sigma, Bill Browning, Sigma Nu, Bill Schaefer and Judson Palmer, Phi Gamma Delta, George Koch and Bob Johnson, Kappa Alpha.

G. AULL	W. BROWNING	B. DEMASTERS	R. JOHNSON	KOCH
LEE	E. McDONALD	SCHAEFER	L. SMITH	H. TROTTER



Pan-Hellenic Council

B. BOGARD



BURCH

CEDERBURG



DONALDSON

PREWITT



M. B. SHOUSE

It is the purpose of the women's Pan-Hellenic Council to adjust such problems as are mutual to the two organizations and to promote a cooperative spirit between the sororities. Its membership consists of three representatives from

each group.

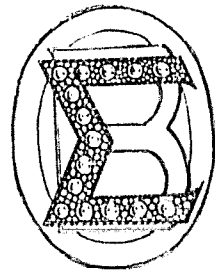
Members: Barbara Bogard, Beta Sigma Omicron; Mary Belle Burch, Beta Sigma Omicron; Helen Jewell Cederburg, Beta Sigma Omicron; Dorothy Donaldson, T.N.T.; Grace Prewitt, T.N.T.;

Mary Beth Shouse, T.N.T.

OFFICERS:

Mary Belle Burch—President
Dorothy Donaldson—Secretary-Treasurer

Beta Sigma Omicron



The Alpha Psi Chapter of Beta Sigma Omicron is William Jewell's only national sorority. It had its origin April 27, 1917 under the name of Iota Pi and became national in 1932. Beta Sigma Omicron was founded at the University in 1886. The colors are ruby and pink and the flowers are Killarney and Richmond roses.

The Beta Sigs gave a very novel rush party which was the first of its kind to be presented in America—a radio broadcast party. Eight girls pledged themselves to the sorority at the beginning of the year.

The sorority planned and enjoyed many parties and teas among which were the Annual Founders' Day dinner, the birthday tea, the Annual Pledge party, a St. Valentine party and the Annual Mother's Day tea.



(82)

Beta Sigs combine scholastic standing with their social achievements. The aim of the sorority is to develop its pledges scholastically and socially.

Under the guidance of Mrs. P. C. Harvey, the sponsor, Beta Sigma Omicron has had a most successful year.

THE OFFICERS

President	Mary Belle Burch
Vice-President	Ellen Sweany
Recording Secretary	Mildred Smith
Corresponding Sec.	Helen Jewell Cederburg
Treasurer	Jane Quick
Warden	Barbara Bogard
Sponsor	Mrs. P. Caspar Harvey

Alpha Psi Chapter



BELL
GRAVES

BOGARD
HEATON

BOYER
MEDLING

BURCH
PINKERTON

BURNLEY
QUICK

BURROUGHS
SHOUSE

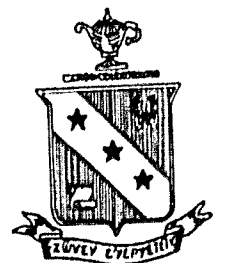
CEDERBURG
SMITH

THE ACTIVES

Mary Belle Burch
Helen Jewell Cederburg
Barbara Bogard
Evelyn Burnley
Mildred Smith
Ellen Sweany
Jane Quick
Mary Lynn Pinkerton

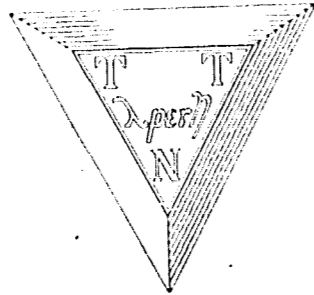
PLEDGES

Margaret Anne Burroughs
Eva Boyer
Ella Mae Shouse
Anna Lois Heaton
Kathryn Graves
Mary Anne Medling
Myrtle Bell



(83)

T. N. T.



Founded in 1922 as a local social sorority, T. N. T. this year has a membership of forty girls. The colors are lavender and purple and the flower is the violet. Outstanding in the events of the calendar for '35-'36 have been the four parties, the tea for the faculty wives and the alumnae, the Mothers' Day Luncheon, the informal dinners, dorm parties, and picnics.

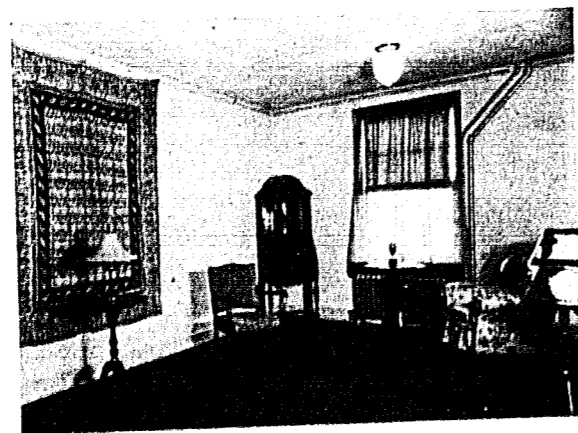
Organized as a sorority to develop its members socially and scholastically, T. N. T. has consistently maintained a high standard.

The group has been ably sponsored by Mrs. J. E. Davis.

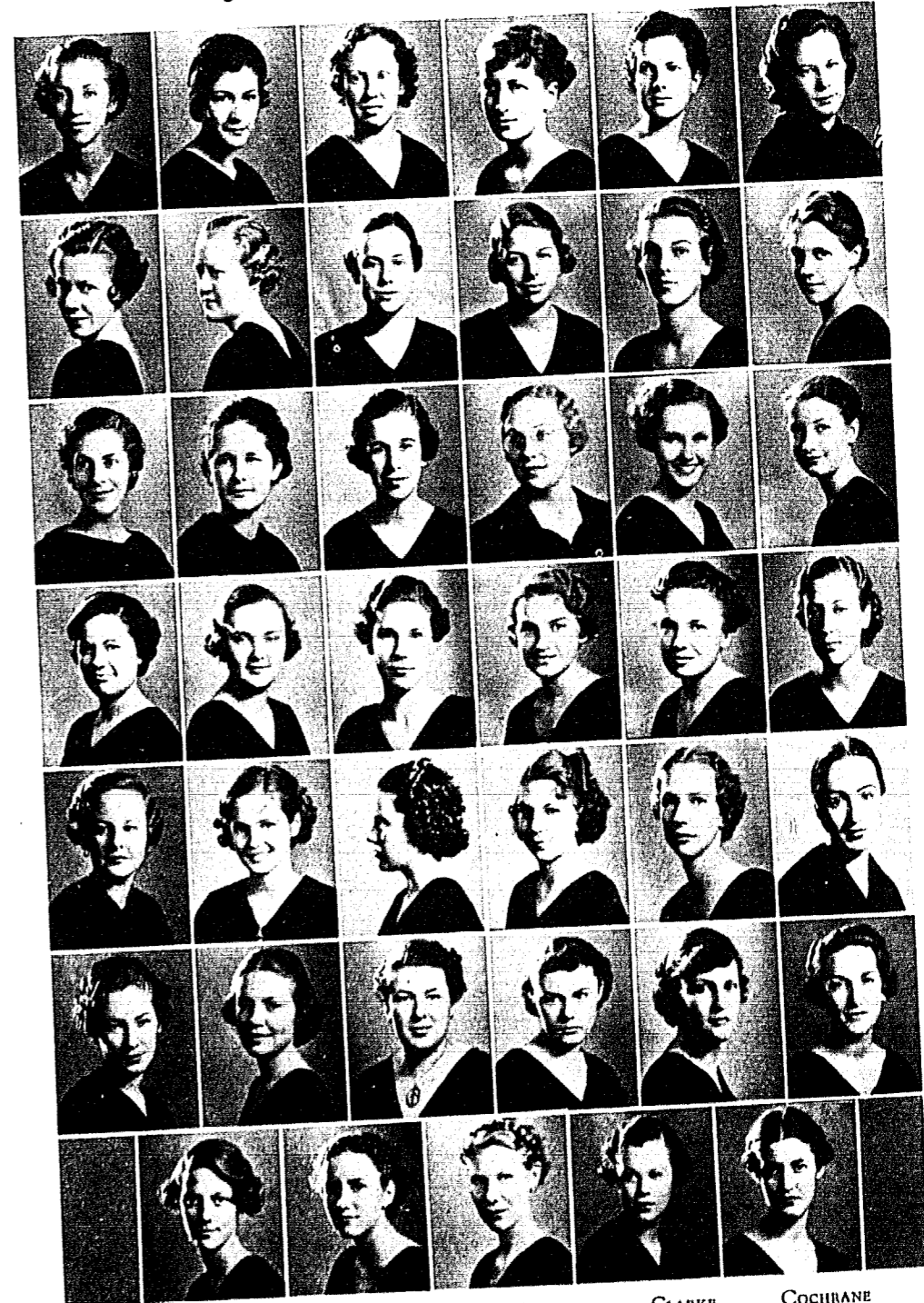
THE OFFICERS

Dorothy Donaldson	President
Mary Beth Shouse	Vice-President
Katherine McKissack	Secretary
Medora Crawford	Treasurer
Marjorie DuVall	Warden
Mary Alice Reed	Historian
Elenor Davis	Parliamentarian

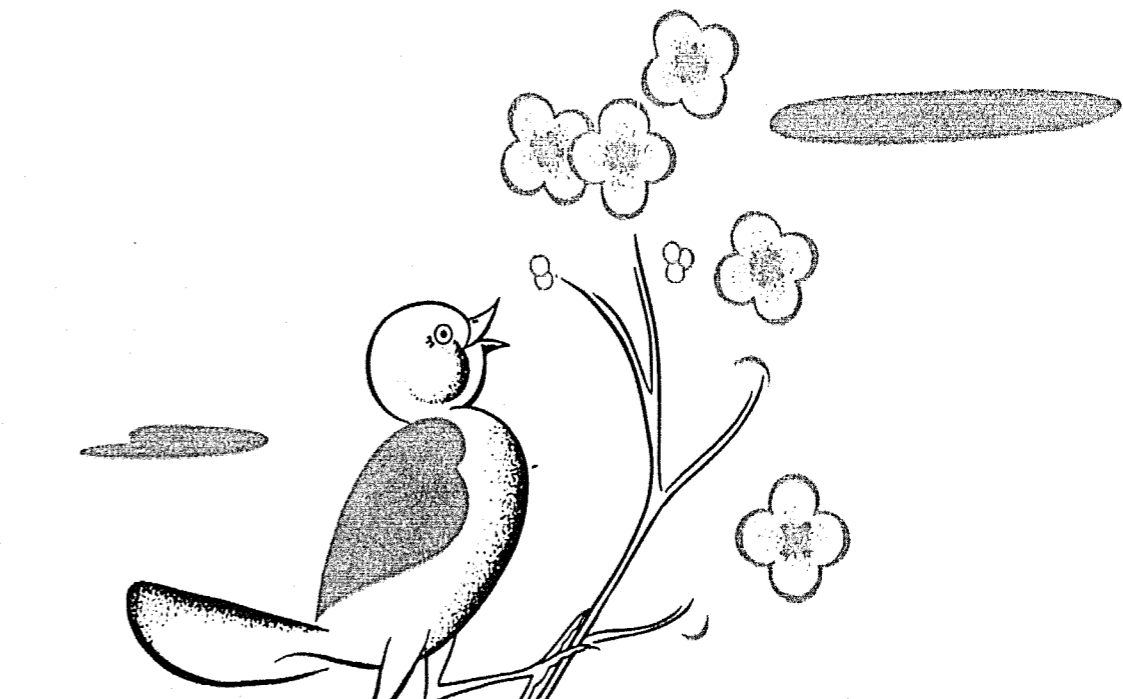
Unphotographed are:
Margaret Phillips
M. K. Trescher



Jewell's Local Sorority



BARTON	BENEDICT	BROWN	BYRNS	CLARKE	COCHRANE
CRAWFORD	CUMMINS	DAVIS	DAVIDSON	DEDMAN	DICKS
DONALDSON	DURHAM	DUVALL	ENGEL	FOWLER	GREEN
HALL	HENDERSON	HUBER	JOLLY	KEIR	LONGNECKER
McKISSACK	MIDDLETON	OFFUT	PAGE	PARROTT	PREWITT
REED	RIDDLE	SCHROEDER	SEVIER	SHOUSE	SMITH
STOELTZING	SWORD	WITCHER	WAGY	WESTBROOK	



SPRING EDITION

of the
Tatler

1 9 3 6

W I L L I A M
J E W E L L
C O L L E G E
L I B E R T Y
M O .



"It's spirit has dared all to earnest endeavor"
—a descriptive line from the pen of our President telling of the influence of the Oak.

The Grand Old Oak stands as a sentinel before Carnegie, adding its spirit to the season of Spring.

A spray of water refreshes the flowers, cools the atmosphere in the President's garden.

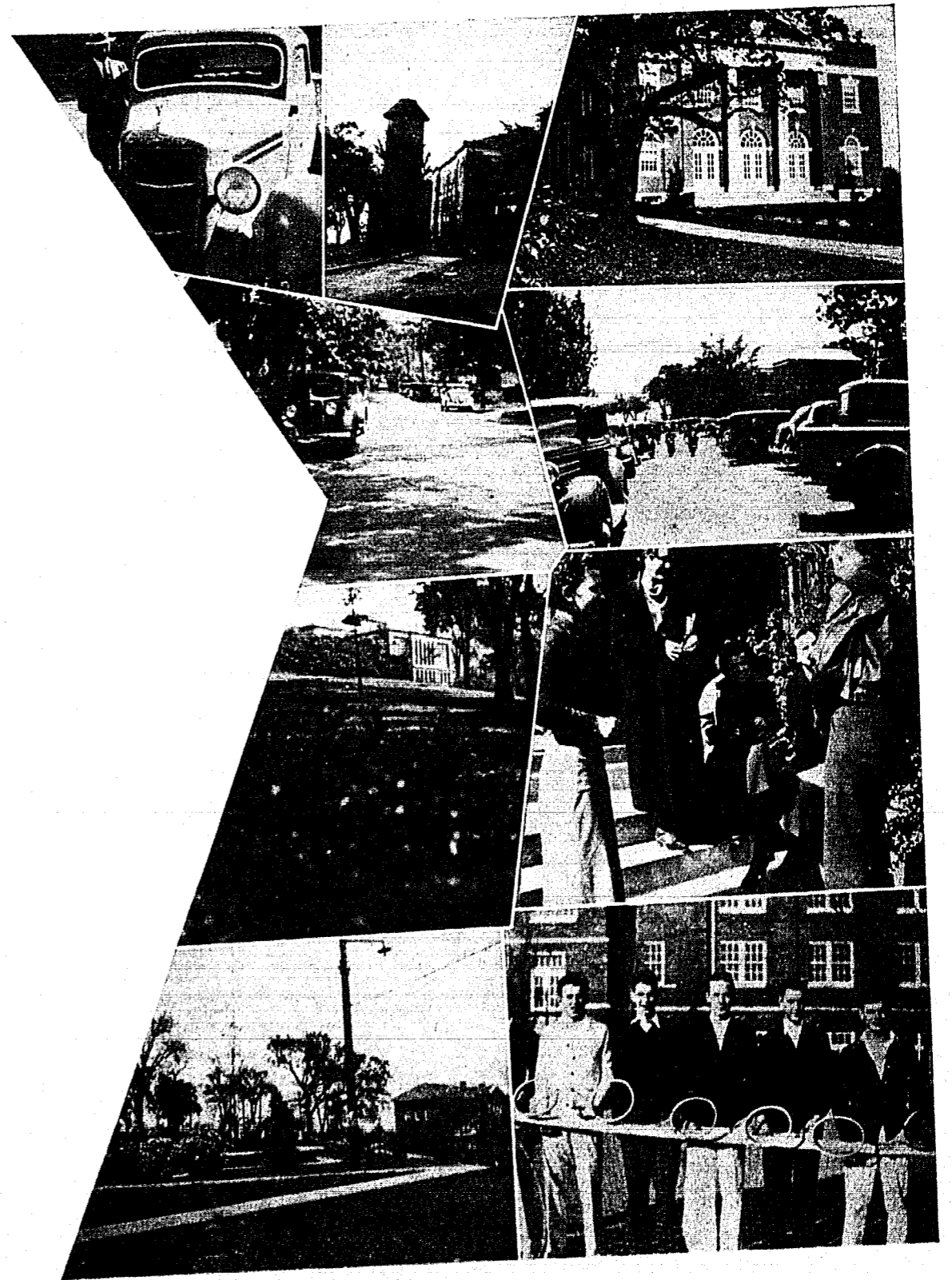
One of the beauty spots of Liberty, this section of the garden gives the Spring season an added attraction.





Queen

Miss Helen May Sevier



Personnel Secretary Eubanks; Ancient water tower; Bathed in
 sunshine are the Oak and Gano.
 Looking toward the hill; Scene of a year ago due to presence
 of Voice of Experience.
 Hedge in the foreground and Carnegie in the background;
 Girls listen attentively to the *truth*.
 Blossoms around the "J" Bench; The tennis team minus
 one-half of Monroe.



That rugged Oak; Frosh with glistening hair and frosh with open mouth; Majestic columns; Just cars.
 New Ely from the rear; laugh, Hennon; Champion Monroe slams in a service.
 Early morning activity; Chandler and Solomon lift themselves up the steps from the Co-op.
 Commencement brings cap, gown, Mother; What a scene—turn around and look at those books, Merritt.

Compare it to the snow scene on page 37; In the grip of Spring.
 From class—Arnold, Minor, and Burns; McDougall lends aid.
 The senior girl at Commencement; Likable Walter Wilson; New Ely from the Melrose walk.
 Action, Bruner—what's the use; Wipe those grins off your faces!





The *Tattler* 1936 sponsored "Daddy" Fruit Day on the campus November 22, 1935. Representatives of western Missouri high schools were invited to celebrate with Dr. Fruit his eightieth birthday.

Here we present the winners of the "prettiest girl" contest. The five young ladies selected from approximately forty high school entrants are in the order of their rank, top row, left to right: Mary K. Noel of Lees Summit, Rose Mae Murphy of North Kansas City, Harriet Jean Harris of North Kansas City; lower row: Maxine Willis of Independence, and Eula Slatten of Bethany.

Introducing
 the Dignified Senior, the
 Noble Junior,
 Organizations and Activities
 Prominent
 in the Spring

A Dedication to the Senior Class of 1936

from the Senior Class of 1937

NOW THAT WE'RE GONE

Swift years on a beautiful hilltop,
Four years in an aura of joy;
They seem like a dream or a rainbow
That we didn't know how to enjoy.

We lived in the lap of tradition,
We studied more than we'll tell,
And we fashioned our lives of ambition—
Hammered our wills into steel.

But some, with a conscious deception,
Deluded themselves with the thought
That work was a silly illusion
And fun was the real thing to want.

They frittered and bantered and babbled,
They foolishly foibled and grinned;
But soon, like a spark from the anvil,
They'll scatter and die in the wind.

Now that the years are all done with,
Now that we're gone—once for all,
Those foolish fears on the hilltop—
We can watch them wither and fall;

Then after the strife is all over,
Jealousies, too, we'll forget,
But the pleasant things we'll remember:
'The fittest always survive.'

A friend or two by your side,
A hundred or so of faces
And a sudden strange longing
To have one more chat between classes.

There are these and more we'll remember
When the last of our finals are passed,
When we're out in a world of adventure;
But freedom's a thing of the past.

1936 —Nancy Culbertson, Class of '37

Seniors

THE OFFICERS

<i>President</i>	August Hintz
<i>Vice-President</i>	Richard Hilton
<i>Secretary</i>	Frances McGraw
<i>Treasurer</i>	Ralph Cooper; Harry L. Trotter

Forrest Aull of Excelsior Springs will major in chemistry and minor in biology. His scholarship warranted membership in Theta Chi Delta and the Men's Biology Club. A chemistry assistant popular with the students, he is also known as the center of the Alpha Nu basketball team the past two years.

In his freshman year Robert N. Benedict attended college in Sioux Falls, South Dakota, in his sophomore year he attended school in his home town of Cedar Rapids, Iowa, taking classes in Coe College. Studying to be a minister, he is in his second year at Jewell. Major: Greek.

From Webster City, Iowa came Clair Brewer who is interested in debate. He wears the key of Pi Kappa Delta. Being a member of Phi Gamma Delta fraternity, he was one of the chief promoters of the basketball team representative of that organization and successful in this year's intramural schedule.

Mary Belle Burch of Bradyville, Iowa will major in English and minor in Latin. A veteran debater, she was in the National Pi Kappa Delta tournament when only a sophomore, debated with the Uni-

versity of London team, has debated over the radio. An outstanding orator, who will rank high in the National contests this year in Houston, Texas. President of Beta Sigma Omicron sorority, she is also president of the Women's Panhellenic Council and a member of Panagis.

Rollin Burhans of Liberty will major in the field of English, will minor in the language Greek. Preparing himself for the Baptist ministry, he is now pastor of a church near California, Mo. A member of the International Relations Club, he is also affiliated with the national honorary organization, Pi Gamma Mu. He is serving as president of the Ministerial Group the last semester.

Robert Crowe came to Jewell from Hannibal-Lar Grange Junior College of Hannibal. While at that institution he exhibited his prowess on the football team; at Jewell, in the fall of 1933, he was in the Cardinal backfield demonstrating his ability. He will major in history and political science. Bob will be remembered as the main force in the Kappa Alpha basketball team. His home is now in Excelsior Springs.



F. AULL
BREWER
BURHANS
DAVIDSON
DITTO
DONALDSON

BENEDICT
BURCH
CROWE
DAVIS
DIXON
DUNCAN

Into the field of religious education will go Margaret Davidson of California, Mo., doing preparatory study in Louisville, Kentucky. She has been active in the Women's Glee Club. Appearing in the *Tattler* 1933 as a beauty queen, she has declined nomination three times since then. Her major and minor: English and Greek.

Kimzey Davis of Liberty will major in history and minor in economics. He lettered in football in the season of 1934. He has written for the *Student* and has been in some major dramatic productions of the William Jewell Players. He is a member of Phi Gamma Delta fraternity.

Flora Vella Ditto comes from Plattsburg. Majoring under the direction of Dr. J. P. Fruit in the field of English, she will minor in Latin.

Hale Dixon was formerly of New Florence, then Central Wesleyan Junior College of Warrenton, and is now completing his college work for the A.B. degree, majoring in history and minoring in Greek. He starred in basketball at Central Wesleyan but excessive obligations kept him from the Cardinal varsity floor. Meanwhile he has led the Ministers in winning many court battles in intramural contests.

Dorothy Donaldson will major in the languages. She is a member of the exclusive group of women, the Panægis. Her writing ability merited membership in the hon-

orary organization, Sigma Tau Delta. President of the T.N.T. sorority, she acts as a representative of that group in the Women's Panhellenic Council. She was graduated from the Liberty high school.

Bert Logan Duncan came to Jewell from Corso. While in Liberty he has made his home in New Ely Hall. Bert will major in the field of English and minor in the ancient language, Greek. A member of Pi Gamma Mu, he has appeared on the honor roll. He is a member of the Ministerial Group. He expects to do graduate work in the Southern Baptist Theological Seminary of Louisville, Kentucky.

John Orville "Happy" Evans, 3847 Bellefontaine, Kansas City, is attending Jewell only two years. He was graduated from Central Wesleyan College of Warrenton with the degree of Associate of Arts. He is another of the many students who have attended Jewell from Central High of Kansas City. A member of the Ministerial Group, he will major in sociology and minor in political science.

Arnold Fenner's chief interest in study has been in English. He will also major in education and minor in Latin. His home is at 720 Grand Avenue, Grand Junction, Colorado. He has served regularly as business manager of the Dramatic Club. He is a member of Sigma Tau Delta.

From 445 South St., Spring-



EVANS
HALE
HENNON
HINTZ
JOHNSON
KOCK

A. FENNER
HAMMONTREE
HILTON
HOCKETT
JONES
MAGRUDER



MAPLES
MCGRAW
MULLINS
PLUMMER
PREWITT
RAMIREZ

McDOUGALL
MOOREHEAD
MURRELL
L. PRATT
PROBST
SAUNDERS

field, came Hazel Marie Hale, the daughter of a prominent Jewell alumnus now pastor of the First Baptist Church of that city. With her brother George, she has come to college by motor car, by train, by airplane. Her major is history and her minor is sociology. An interest in prominent minister has not decreased at Jewell.

John David Hammontree, 210 East College, Independence, will major in history and minor in political science and economics. He has been the pianist for the chapel exercises this year. A professional business man, he operates a grocery store in Independence.

Mansel Hennon hails from 4961 Lotus, St. Louis. He will major in sociology and English; minor in economics and Greek. Affiliated with the Ministerial Group, he is also active in the honorary Scout fraternity, Alpha Phi Omega. In the capacity of student manager of athletic equipment, he is the first Jewell student to receive an honorary sweater from the athletic department.

The vice-president of the senior class is Richard Hilton of Hardin. He has spent four years at Jewell majoring in physics and minoring in mathematics. President of Alpha Phi Omega, he is also affiliated with the Acons and Sigma Pi Sigma. "Dick" has a seat on the Student Senate and Board of Control due to his class office. He is a mem-

ber of Phi Gamma Delta fraternity.

From Smith-Cotton high school, Sedalia, came August Hintz with a fine record scholastically and in debate. He early achieved the highest honor in Jewell debate along with the Pi Kappa Delta key. The veteran of the forensics squad, the school sent him into the West, down the Pacific coast, to the National Tournament at Houston, Texas, engaging in over thirty debates. President of the senior class, he serves on the Student Senate and Board of Control. He has served as president of the Ministerial Group and Pi Gamma Mu.

Having a high scholastic standing at East high school of Kansas City, Alice Hockett has regularly appeared on the honor roll while at Jewell. She has been on the *Student* staff and is a member of the Dramatic Club. Having achieved distinction in dramatics, she was elected to membership in Alpha Psi Omega, honorary dramatics fraternity. She is also a member of Pi Gamma Mu.

One of the most brilliant physics students ever to attend William Jewell is Gorden Johnson of Rock Springs, Montana. He will major in the science physics; he will minor in mathematics, a field in which he is also adept. A former teacher in the public schools system of Montana, he expects to return to the teaching profession.

Alyce Merle Jones of 3710



SCHAEFER
SHARRAH
L. SMITH
TROTTER
WETZEL
WILLIS

SHANK
SHIMODA
SODEMAN
TRUOX
WHEAT
WILLIAMSON

College, Kansas City will major in Latin and minor in French. Intensive study has placed her name on the honor roll frequently. She was active in Y.W.A until that organization was dissolved.

George B. Koch, 462 East Franklin, Liberty, will major in history and minor in political science and economics. As president of Kappa Alpha fraternity, he is a representative of that organization on the Interfraternity Council. He is associated with Pi Gamma Mu and the International Relations Club. A letterman in track, he was also selected as an Aeon.

The Baptist congregation of Wolcott, Kansas, regularly hears the sermons of N. Burnett Magruder of Odessa. Being elected to the highest student office on the hill, he served this year as president of the student body in the most efficient manner. As chairman of the Student Senate and Board of Control, he conducted meetings orderly. His many activities placed him on the roll of the Aeons and Pi Kappa Delta.

A Bachelor of Science degree, a school superintendent's position did not satisfy L. Emerson Maples, formerly of Green City. His heart and mind turned to the gospel ministry and he continued study at Jewell this year for the Bachelor of Arts degree. He is a member of the Ministerial Group and pastor of the Chandler Baptist Church. A former star

athlete, he served as assistant coach this year. A member of Sigma Alpha Epsilon fraternity at Union College.

The captain of this year's football team was Merrill P. McDougall of Liberty. Returning to Jewell from Southwestern of Memphis, he immediately became active in campus affairs. He is president of the "J" Club and a member of the Aeons. His writing ability merited membership in Sigma Tau Delta. Elected Popular Man in 1935; he will major in French and minor in Spanish. A graceful and easy public speaker. A member of Sigma Alpha Epsilon at Southwestern.

Frances Lee McGraw of California, Mo. will major in education and English, minor in the language Latin. She has been active in school life as is evidenced from the fact she was chosen to the membership of Panaegis. Serving in the official position of Women's Athletic Director in 1935-36, she has also sponsored the Girls' Pep Squad.

From Junction City, Colorado, came Andrew S. Moorehead four years ago to study for the degree A. B. As a member of the Ministerial Group, he has not confined his work to the class room. Due to his employment in the library many books are rebound and placed on the shelves in the best of condition for reference use.

Marguerite Mullins will major in education and

French; she will minor in Spanish. She was an active member of the former Y. W. A. organization on the hill. Her home is in Princeton.

Mildred Murrell of 2917 Baltimore, Kansas City will be remembered as the pleasant girl in the office of the business manager. She holds membership in the International Relations Club. She was affiliated with the Y. W. A. during its existence at Jewell.

A quiet and unassuming man is Phillip Plummer of Turney. For work on his Bachelor of Arts degree he will major in education, minor in English.

LeRoy George Pratt is another man who has spent four years at Jewell. His home is at 1001 East Fourteenth St., Sedalia; his former school: Smith-Cotton. LeRoy lettered in basketball at Jewell in the season of 1932-33. A member of the Ministerial Group, he intends to continue his education in a graduate school.

Grace Prewitt of Viborg, South Dakota will major in history, minor in political science and economics. An experienced debater, she is a representative of Jewell in the National Tournament at Houston. She is a member of Panaegis, Pi Gamma Mu, Pi Kappa Delta, and Sigma Tau Delta. Students also know her as an accomplished singer. A member of T. N.

T., she is on the Panhellenic Council.

Theodore J. Probst of Jackson will major in history and minor in sociology and economics. Probst will have spent only one year at Jewell.

Ciro Benito Ramirez, a former football player with the Westport high team of Kansas City, reported for football practice at Jewell late in the 1933 season but gained a starting berth. At end he lettered and starred for the Cardinals in 1934, being forced out of the game in 1935 because of a back injury. A member of Alpha Phi Omega and Alpha Zeta Pi, he will major in French and Spanish and minor in education.

Frances Jean Saunders of Liberty will receive her Bachelor of Arts degree from Jewell in three years of study, having started with the freshman class of 1933-34. She attained Beta Lambda, honorary biology organization. Her major: French; her minor: Spanish.

William G. Schaefer, 604 East 71st Terrace, Kansas City, will major in history and minor in economics. "Bill" is affiliated with Alpha Phi Omega, the Players, Glee Club. He was on the Student staff of '35 and cheer leader '32, '33, '34. He is president of Phi Gamma Delta fraternity.

Ralph Chalmer Shank of Independence will major in chemistry, minor in physics and mathematics. He is a

member of the honorary chemistry fraternity, Theta Chi Delta. He also holds membership in Alpha Zeta Pi. Coming to Jewell last year, he was immediately made an assistant in the department of chemistry.

The name of Paul Sharrah has regularly appeared on the honor roll. His major is physics and his minor is mathematics. His scholarship warranted membership in the honorary physics fraternity, Sigma Pi Sigma. Paul comes from Chillicothe.

Robert K. Shimoda, exchange student from the University of Hawaii at Honolulu, has spoken widely in the United States, will have spoken in twenty-four states before returning to Japan next fall. Has rated honor roll every term, majoring in history and sociology. His home is in Kumamoto, Japan. Will attend Doshisha University at Kyoto, Japan next fall. Has crossed the Pacific Ocean twelve times.

The editor of the *Tatler* 1935, C. Lowell Smith, will major in biology and minor in chemistry. This year he served as student adviser to the editor of the *Tatler*. He is associated with the Players, the International Relations Club, and the Men's Biology Club. He has served on the Student staff and is a member of Gamma Pi Epsilon. As president of Zeta Chi, he represents that group on the Interfraternity Council.

Lowell Sodeman of Winn-

wood will continue study in theology upon graduation from Jewell. He has been an active member of the Ministerial Group. Other activities found him associated with the Players and appearing in the band.

From Carrollton came H. L. Trotter to major in chemistry and minor in mathematics. Harry is president of Sigma Nu and a member of the Interfraternity Council. An Aeon, he is also in Alpha Phi Omega. Three years he has appeared in the Glee Club and for four years he has played in the Jewell band.

An outstanding student is Dorothy Truex of Liberty. Especially well known for her literary talents which placed her in Sigma Tau Delta, she has made high grades in ev-

ery course, appearing near the top on the honor roll. She belongs to Panaegis, Beta Lambda, Alpha Psi Omega, International Relations Club. She will major in English and minor in Latin. She is an assistant in the department of education.

A's are the common thing to Nevin Wetzel placing him on the honor roll regularly. Coming to Jewell from Northeast Junior College of Kansas City, he will major in biology and minor in chemistry. He holds membership in the Men's Biology Club. Nevin's home is at 1717 Overton, Independence.

Jewell students and football followers of the Big Red Team will not soon forget the play of Zack Wheat in the line. He was an all-conference selection this year.

He is properly yet not commonly known as Zackariah Davis. Zack came to Jewell from Westport high school of Kansas City where he played football for Toddy Newman. His major and minor: physics and English. He is a member of Kappa Sigma.

FranCeil Murrow Willis of Spickard was an assistant in the department of English. She has spent much time in writing, her pen producing more than one short novel. She is a member of Sigma Tau Delta. Her major and minor: English and Latin.

Ruth Ann Williamson comes from 2410 South 18th St., St. Joseph. For the A. B. degree she will major in education and English and minor in biology. She is a talented musician.

Unphotographed

Carol Lemons	Liberty
James Marion Smith	Liberty
Edwin Turnage	Drexel
Donald Vine	Trinidad, Colorado
W. H. Allison	Kansas City, Kansas
Samuel H. Claypool	Liberty
Ralph Allen Cooper	Liberty
Ida C. Goyne	Ashland, Pennsylvania



BURNETT MAGRUDER
President Student Body

RICHARD HILTON
Vice-President Senior Class

AUGUST HINTZ
President Senior Class

FRED RENSCHAW, JR.
President Junior Class

LESTER HUNT
Vice-President Junior Class

GEORGE HALE
President Sophomore Class

MAURICE WINGER
President Freshman Class

Student Government

The functions of student government in William Jewell College are described in the Student Constitution. A Senate, composed of certain class officers, represents the student body in all official matters. The governing power of the Senate is confined to supervising elections and the appointment of committees. The Senate, in conjunction with faculty representatives is invested with the control of student publications.

The official representatives of the student

body have scarcely any opportunity to influence officially the policies of student action. During the past year, student government has functioned as well as possible under its circumscribed powers. The student body should have an official organ, besides the newspaper which solicits and directs student opinion. Without such an organ, there is little opportunity for the development of student leadership in official capacities of the student body.



ALLEN
BOGARD
BURNLEY

AMERY
BOWERS
BYRNS

AULL
BROWER
CHANDLER

BECK
BROWNING
CHRANE

BETTS
BURKHARDT
CLAUSING

Juniors

Mary Joy Allen attended Jewell a few years ago. This year she returned to Jewell as a junior. Her major is English. Her home is in Liberty.

The business manager of the *Tattler* 1936, Joe Amery, jr., will major in history; minor in French. A debater of many seasons, he is a member of Pi Kappa Delta. His debating ability brought an 8,000 mile trip through the West this spring. His home is in Liberty.

George Aull of Liberty is business manager of the *Student*. He will major in history and minor in political science. Affiliated with Alpha Phi Omega and Pi Gamma Mu, he belongs

to Phi Gamma Delta and sits in Interfraternity Council.

From Norborne came Leon Beck who will major in history and minor in sociology. He holds membership in I. R. C. and Pi Gamma Mu and Alpha Phi Omega. He is listed on Zeta Chi roll.

Glen Betts came from William Chrisman High of Independence to work on the degree A. B. in Jewell class rooms. A member of the band and Alpha Phi Omega. His major is in physical science.

A chemistry assistant is Dale Bogard of Liberty who will major in chemistry and minor in physics. A member of Theta Chi

Delta, he is also in Alpha Phi Omega. Dale is secretary of the junior class.

Present president of Pi Gamma Mu is James Bowers, of Pueblo, Colorado. He is a member of Kappa Alpha fraternity. Experienced in forensics, he is affiliated with Pi Kappa Delta. Major: sociology; minor: economics and political science.

Clyde Brower of Independence will major in the field of chemistry, minor in mathematics. He belongs to Theta Chi Delta. An active member of the band for three years.

From Olathe, Kansas came Bill Browning who was president of Sigma Nu in 1934-35.

THE OFFICERS:

President: Fred T. Renshaw, jr.
Vice-President: Lester Hunt
Secretary: Dale Bogard
Treasurer: Edwin Monroe



COPE
DAVIDSON
FOLEY

CRAWFORD
DAVIS
GARDNER

CROZIER
DURHAM
HOWARD

CULBERTSON
EDWARDS
HUFFT

CUNNINGHAM
FENNER
HUNT

A member of Interfraternity Council, he has served on the *Student* staff and holds membership in I. R. C. He was active in Y. M. C. A. until that group was absorbed.

Regularly appearing on the honor roll is the name of Annajane Burkhardt of Liberty. Her major: history, minor: political science. She has served on *Student* staff. Holds membership in Sigma Tau Delta and I. R. C.

Evelyn Burnley of Buckner attended Jewell as a freshman, but went to Warrensburg last year as a sophomore. Jewell again claimed her this year. She is a member of Beta Sigma Omicron.

Else Byrns of Liberty will major in sociology. She served as *Student* editor last fall. She is a member of T. N. T. and International Relations Club.

From William Chrisman of Independence came Dick Chandler, an accomplished musician who directed the Jewell band during the last season. His major and minor are in sciences.

The Captain of the 1936 track squad is fleet-footed Frank Crane of Liberty. Undeclared in the 100-yard dash last season, he shows speed again this season. A member of I. R. C., he will major in history and minor in sociology.

Claire Clausing will major in French and minor in German. Her home is in New Orleans, Louisiana.

From Lexington came Jim Clint Cope to major in chemistry and minor in German. Prominent in Sigma Nu, he also is in Pi Kappa Delta, Sigma Tau Delta, and Theta Chi Del-

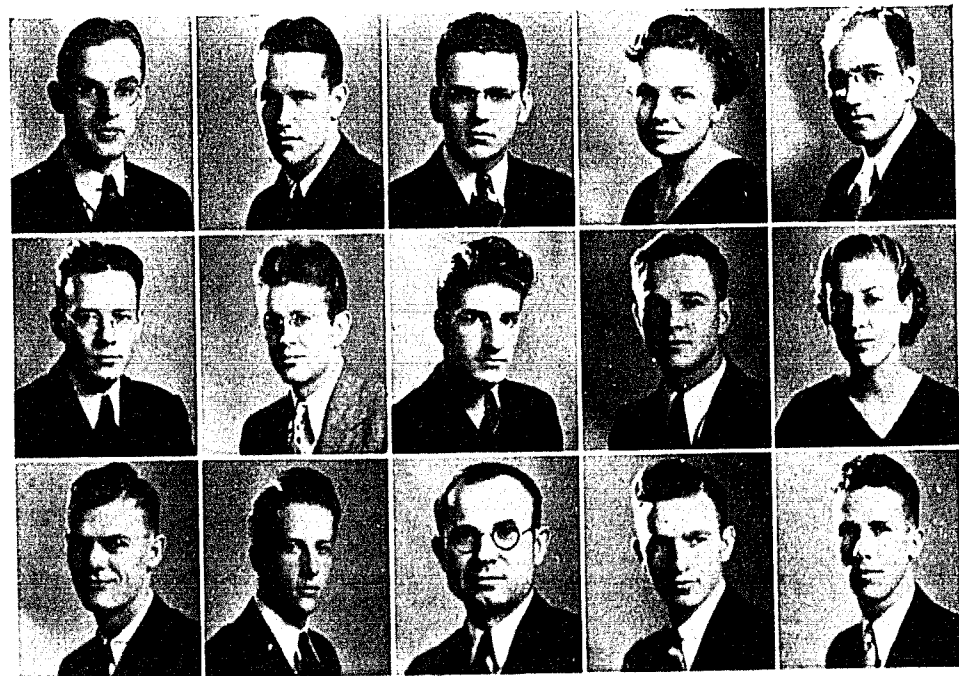
ta. Jim is associate editor of the *Tattler* 1936.

Majoring in English, her interest in English does not overshadow her interest in track, rather in track captain. Medora Crawford, of Liberty, T. N. T., is also affiliated with I. R. C. May often be seen riding horse-back.

Rufus Crozier of Adrian will major in English. He came to Jewell for the first time this year. He is a member of the Ministerial Group.

1025 West 58th Street, Kansas City, is the home of Nancy Culbertson. She attended Lindenwood at St. Charles and Stanford of Palo Alto, California. Her major: philosophy; her minor: dramatic language.

Track man deluxe is Coulter



HYATT KING MARQUETTE	JACKSON KITRELL MCDONALD	R. JOHNSON LEE MIKHALCHUK	KEIR LOGAN E. MONROE	KEY LONGNECKER S. MONROE
----------------------------	--------------------------------	---------------------------------	----------------------------	--------------------------------

Cunningham of Kansas City, Kansas. Winning his letter at Kansas University, he came to Jewell and won two first places in the first dual meet. His major is English and minor, Greek.

From North Kansas City, via Lindenwood, of St. Charles, came Ella Davidson, sister of former Jewell debater, James Davidson. Her major: English and Education. A member of T. N. T. and the Players.

Elenor Davis, daughter of Jewell business manager, will major in English, minor in Latin. Belongs to T. N. T. and International Relations Club. On *Tatler* 1936 staff.

Dudley Durham of Liberty will major in history and minor in political science. He is a member of Kappa Alpha. He intends to go into the banking field upon graduation.

An accomplished actor is Austin Edwards of Kansas City, Kansas. Played excellently in "Death Takes a Holiday". He is a member of Zeta Chi, Sigma Tau Delta and Ministerial Group.

720 Grand Avenue, Grand Junction, Colorado, is the home of Bob Fenner who will major in English. He has pleased Liberty audiences repeatedly with his renditions on the piano and marimba.

Jack Foley, 2729 Garfield, Kansas City, will major in English and minor in Latin. He is a member of the Ministerial Group and Alpha Zeta Pi.

From 131 Standish Avenue, Plymouth, Massachusetts came Earl Gardner who is affiliated with Ministerial Group, Alpha Phi Omega, and Alpha Zeta Pi. Major: history.

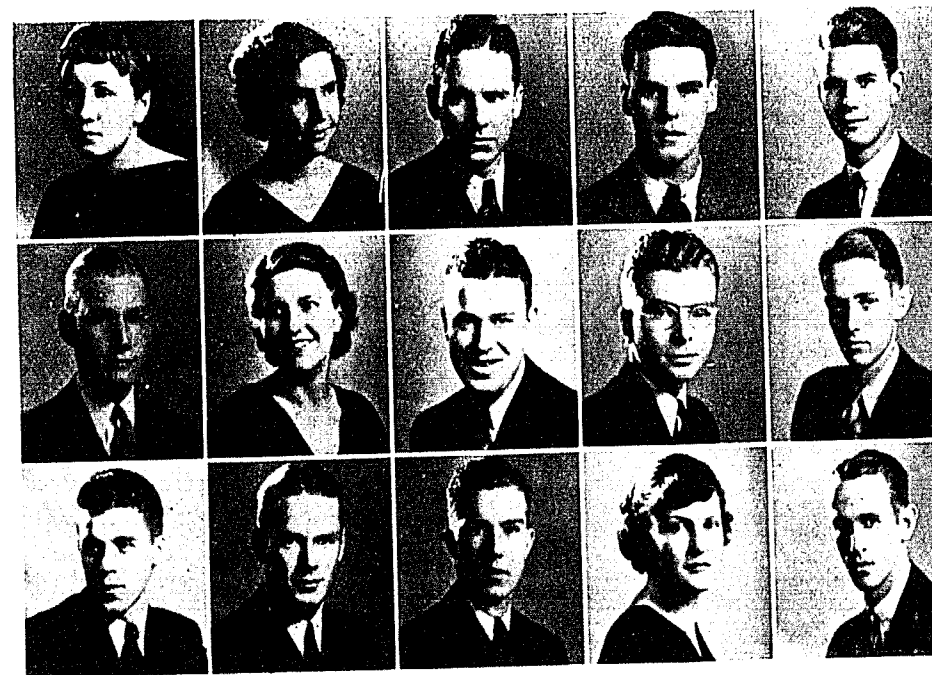
Judson Howard, 3524 Michi-

gan, Kansas City, is a member of Phi Gamma Delta, Alpha Phi Omega, and the Ministerial Group. Being passionately interested in literature, his major is under John Phelps Fruit.

Out for football the first time in college, as a junior Jake Hufft of Liberty, continued to show his prowess as he did in the backfield of Liberty High. He is a member of K.A.

Glendale, Arizona is the home of Lester Hunt, vice-president of the junior class and a member of the Student Senate. One of the best independent basketball players in school, he is affiliated with the Ministerial Group.

From 936 Hill, Grand Junction, Colorado came Bob Hyatt three years ago to work on A.B. He will major in English and minor in Greek. He is a mem-



MILLION PERRY QUICK	OWINGS PINKERTON RENSHAW	PAISLEY PORTER RHODES	PALMER R. PRATT SHOUSE	PATTERSON PROCTOR SINGLETON
---------------------------	--------------------------------	-----------------------------	------------------------------	-----------------------------------

ber of the Ministerial Group. Sings in the Glee Club.

A credited journalist is Wade Jackson, formerly of Westport High, Kansas City. He has served on the *Student* staff and compiled the bulk of the athletic statistics for this issue of the *Tatler*. A letterman in football in 1934.

Robert Johnson of Kansas City, will major in English and education. He is a member of Kappa Alpha and the Interfraternity Council. Elected popular man this year, he is connected with Campus Cleaners.

Maxine Keir of Kansas City is employed in the college office. A member of T.N.T., she is also a member of the William Jewell Players.

A prominent Ministerial student is Bill Key of Sullivan. He

is president of the State B.S.U. and head of W.J.C.C.A., recently organized. His major: history; minor: political science.

6331 Ridge, St. Louis, is the home of Raleigh King, formerly of Soldan High, that city. He will major in the ancient languages. He is a member of the Ministerial Group and is employed in the Press.

From Waterloo, Iowa, came Robert F. Kittrell to begin study at Jewell as a junior. He is a member of the Ministerial Group and Alpha Zeta Pi.

Detroit, Michigan is the home town of Howard Lee who will major in sociology and minor in economics. He is a member of Zeta Chi, and Interfraternity Council, and Ministerial Group.

Among the Montgomery

City delegation at Jewell is Cecil Logan who will major in history, minor in political science. He is a member of I.R.C. and the Ministerial Group.

From Trenton to Melrose was the trip of Doris Longnecker last fall. She attended Trenton Junior College. A member of T.N.T. and Dramatic Club.

Co-Captain of varsity basketball 1935-36, W. R. Marquette is the only 3-year letterman in that sport in school. "Dub" is playing his first season as a member of the crack 4-man varsity Tennis team. Instructor in life-saving, he belongs to K.A., A.P.O. and "J" Club. His home is in Harrisonville.

President of Kappa Sigma fraternity this year is Ed McDonald of Liberty. He is a member of the Interfraternity



STIGERS WESTBROOK STIRK WHISTLER STURGES WHITSITT TANNER WILSON TAYLOR B. DEMASTERS WATERS R. DEMASTERS

Council. He will major in the field of social science.

H. J. Mikhalchuk of Kansas City, Kansas is majoring in history. He is a member of the Ministerial Group.

Mo. State College Tennis singles champion 1935, State doubles champion 1934, Captain Varsity tennis team 1935 and 1936, Editor the *Tatler* 1936, has made the college life of Edwin Monroe of Harrisonville an active one. Other affiliations: Basketball 1933-34, *Student* staff 1934-35, Alpha Phi Omega, "J" Club, Gamma Pi Epsilon. Major: English.

From Jefferson City Junior College came Stanley Monroe of Mountain View, Arkansas and he soon demonstrated basketball prowess which led to his selection as Captain Jewell Basketball 1936-37. Comes from a family of physicians but he will take up journalism at M. U.

Mildred Million, whose home is in Rockport, is a member of Sigma Tau Delta. Being interested in literature, her major is

English and her minor Latin. Secretarial work in the William Jewell Press takes a great deal of her time.

Moberly has a representative in Jewell in the person of Ruth Owings. This is her first year here. She is a student matron at Melrose.

Charles Paisley takes a particular interest in the sciences. Chemistry is his major and Biology is his minor. He is a member of Kappa Alpha. Farmington, Iowa is his home.

Judson Palmer has not only brought about greater interest in dramatics through his ability as an actor but also is prominent in the I.R.C. and in Phi Gamma Delta. His major field is history along with political science and economics. His home is in Kansas City.

Stanley Patterson hails from New Mexico Military Institute, Roswell, but his home base is in Kansas City on West 55th St. Majoring in history, he is a member of Kappa Alpha and I.R.C.

Big boy, small town; Ben Perry, McFall. He will major in English. Ben is a member of Kappa Alpha fraternity and International Relations Club.

Mary Lynn Pinkerton came to Jewell from Kansas City last fall for the first time, was placed on the *Tatler* staff by the Editor, was received into Beta Sigma Omicron, I.R.C., was appointed English assistant.

Upon graduation from William Chrisman High of Independence, Bud Porter (James W.) went to Bolivar, then to Jewell. He will major in English. A member of the Ministerial Group.

1872 East 16th, Tulsa, Oklahoma, is the home of Robert Pratt who came to Jewell last fall from Bolivar Junior College. Majoring in Greek, minoring in Latin, he is a Ministerial student. was in intramural basketball.

A remarkable rendition was given in "Death Takes a Holiday" by L. M. Proctor, jr. of Independence. Honored by Alpha Psi Omega, he also be-

longs to I.R.C. and is a member of Sigma Nu fraternity.

English and Latin are major and minor for Oz Quick, of Hardin, toward the A.B. degree. He is an active member of Ministerial Group and Alpha Phi Omega. Played stellar basketball for the ministers.

The popular and well-dressed manager of the Cooperative Book Store is Fred Renshaw, jr. of Boonville. Letterman in Tennis in 1935 and 1936, he is a member of the "J" Club. President of the junior class, member of the Student Senate, Theta Chi Delta, Alpha Phi Omega, his time is of necessity budgeted.

Bettie Stigers of Leavenworth, Kansas will major in sociology and minor in history and economics. Holds membership in the Players, I.R.C., and Pi Gamma Mu.

Richard Stirk, Scenic, South Dakota, is a member of Kappa Sigma fraternity.

Brilliant psychologist and Biologist is Viola Sturges, student assistant in psychology. Her scholarship placed her in Beta Lambda. Her home is in Carrollton.

Editor of the *Student* fall 1936, associate editor spring 1936, efficient pressman of William Jewell Press, contributing editor of *Tatler* 1936 gives Howard Rhodes of Hardin, schooling within school. He will major in English and education.

A Queen of *Tatlers* 1935, 1936, Popular Girl of *Tatler* 1934, Mary Beth Shouse of Blackwater, is a member of T. N. T. so-

rity and Pan-Hellenic Council, also I. R. C. She will major and minor in French and Spanish.

One of the prominent intramural basketball players of the recent campaign was Sheldon Singleton of Gower. He will major in sociology. He is employed in William Jewell Press.

On the left end of the Cardinal line on the gridiron was often seen Harold Taylor of Slater. Attending Valley his freshman year, he lost a year of eligibility, but lettered last fall in football. He wears the pledge pin of Kappa Sigma.

Editor William Waters of the *Student* spring 1936, is also a ranking Player of Jewell's actors. President of International Relations Club and a member of Pi Gamma Mu. Belongs to Phi Gamma Delta. His major: history; minor: political science. Interested in freshman girl. Lives in Liberty.

Mary Margaret Westbrook of Marshall attended Jewell as a freshman, Valley as a sophomore, back to Jewell as a junior. A member of T.N.T. and Players, she will major in English and minor in history.

Pawnee, Oklahoma is the home of Clark Whistler, letterman in track 1935 and 1936. He

is a member of the "J" Club and the Ministerial Group. Clark will major in English and minor in Greek.

Dorothy Whitsitt calls her home Judson Hall, Louisville, Kentucky for her parents are attending school there at the seminary. A member of I.R.C., she will major in sociology.

The photograph of Aureila Tanner appears in the junior section although she has enough hours to be a senior. Her home is in Richmond.

A letterman in Track 1934 and 1935, Walter Wilson of Carrollton won some 220 races and often finished second to Chrane in 100-yard dash. A member of "J" Club and Kappa Alpha. Noted for a sunny disposition.

Captain-elect Football 1936, Robert DeMasters of Liberty will lead Cardinal on the gridiron, will be playing his third year. His Leica camera photographed football snapshots for *Tatler* 1936. He is a member of Kappa Sigma fraternity.

Ray DeMasters, brother of Bob, lettered in football in 1933 and 1934, and basketball in 1933 and 1936. Will be remembered for his gathering in of some long passes for gains. He belongs to Kappa Sigma.

UNPHOTOGRAPHED

Jeanne Anderson	Liberty
Robert Browning	Kansas City
Helen Christian	Darlington
Vella Ditto	Plattsburg
Alice Hinkle	Liberty
Glenn Knight	Kansas City, Kansas
Emma Payne	Liberty
Paul Thompson	Liberty
Morris Lee Timbrook	Centralia

Track

Hufft Captain 1935

Collins Hufft, a senior and letterman in the field events in track as well as the star fullback on the 1934 football team, found himself unable to compete with the squad which elected him captain. Collins' speciality was the discus throw, but he was also a contender in the javelin throw.

Chrane Captain-Elect 1936

Frank Chrane merited being chosen captain for 1936 by proving himself not only Jewell's outstanding cinder satellite, but also one of the best in the state. Chrane runs the 100 yd., 220 yd., and 440 yd. dashes and anchor man on the relay team. The fact that he made more points than the rest of his team-mates in the past season's competition stands as proof of his versatility and ability.

His performance against Ottawa in running the 100 yd. dash in 9.8 equalled the M.C.A.U. record but since it was a non-conference meet he is not entitled to share the honor of tying that record. Chrane's biggest feat of the season was besting Edmonds of Westminster in the century at the State Meet, Edmonds had not previously been beaten in that event over a period of 4 years of conference competition.

Summary of 1935 Season

Chrane and Morales were the only consistent point winners. Morales is almost as versatile as Chrane, being a competitor in the broad and high jumps, pole vault, and a dependable utility man



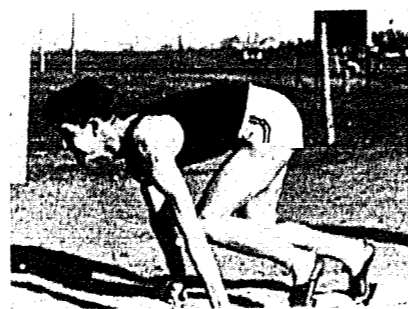
Top row; left to right: Coach Bowles, Tibbetts, Burtch, Jackson Martin, Whistler. Middle row: Solomon, Captain Chrane, C Bowles, R. Bowles, Brewer, Johnson, Kugler, Clarke. Front row Knight, Sigmon, George, Morales, McDonald, McCarty, Cunningham, Taylor, A. Magee, Suarez.

in the relays. After tying for first at Ottawa and placing sixth at the K. U. Relays, Morales' superiority in the high jump was virtually unchallenged for the remainder of the season.

Richard Stirk, Lindon Maddox, Clark Whistler, Walter Wilson, James Smith, Lynn Solomon, and Bob Bowles were the others to letter besides Chrane and Morales. Stirk won his sweater in the 880 yd. dash and the relay races. Whistler, Smith, and Maddox lettered in the distance runs. Bowles and Solomon earned their sweaters in the hurdle events. In the discus throw, shot put, and javelin throw the Cardinals were woefully weak, receiving only two seconds and several thirds during the entire season in these events.

Jewell—66 1-3, Ottawa—64 2-3

Slashing through slightly chilled air the William Jewell track team nosed out Ottawa University in the first dual meet of the 1936 season on April 6. This is the first victory in track that Jewell has won in several seasons and marks an auspicious start for the season. Captain Frank Chrane came through in his pet events and won the 100-yard dash and the 220-yard dash. Coulter Cunningham was high point man for Jewell with thirteen points, winning in the quarter and half-mile races and a second place in the 100-yard dash. Solomon, Morales, Whistler won firsts and other point winners were B. Bowles, Sigmon, Burtch, Martin, and C. Bowles.



CAPTAIN FRANK CHRANE

Tennis Championship

Tennis Team Preserves William Jewell Athletic Tradition

Three state championships and one second place in the last two years is the tournament record of the Jewell varsity tennis men. A glance at the last few years' record of the tennis team shows that it has played no small part in keeping Jewell's record of having won more athletic championships than any other college in the state intact.

The 1935 squad was captained by Ed. Monroe and coached by R. E. Bowles. The timely advice of Coach Bowles at the conference tournament at Fulton was a factor which enabled Captain Monroe to sweep through the singles play and finish the season without a defeat. The varsity netmen advanced to the state tournament with the distinction of having lost only one dual meet. In regard to this loss to Central it should be noted that Jewell trounced Missouri Valley 4 to 2, and Valley later even more thoroughly "mopped up" Central 5 to 1, all of which indicates that Jewell had an "off day" when they played Central.

As a further indication of Jewell's consistent superiority on the courts their schedule for 1936

has been enlarged and the schedule for the spring of 1937 will be further enlarged according to Coach Bowles and Captain Monroe. The enlarged schedule will include Wentworth, Missouri University, Kansas State College, and other schools.

Captain Ed. Monroe Captures the Missouri College Conference Singles Title

Bettering the brilliant record of his former doubles partner and co-holder of the state doubles championship, Ward Wiley, Captain Ed. Monroe swept through the singles division of the state tournament in his sophomore year. Ward Wiley, former Captain, captured the singles title for the first time as a junior. It is to the scrappy little player, Captain Monroe and Simrall that looks Jewell for repetition of the tennis championships in the state tournament.

On May 17 and 18 the 1935 tennis tournament of the M.C.A.U. Conference was held at Westminster College in Fulton. Ed. Monroe and Keller Bell entered the singles tournament and both advanced to the semi-finals in opposite brackets.

Bell defeated Logan of Drury in the second round but fell before the accurate strokes of Repps



1936 SQUAD

RENSHAW

HENSON

BRUNER

SIMBALL

MARQUETTE

CAPTAIN MONROE

Tennis

of Westminster in the semi-final round 0-6, 2-6.

Monroe defeated Long of Missouri Valley in the first round 6-1, 6-3. In the second round Monroe repeated with a victory over Boettner of Tarkio 6-2, 6-3, and in the semi-finals turned back Chriswell, Drury's ranking singles player by a score of 6-2, 6-0. Repps and Monroe moved on to the courts before noon Saturday morning for the state singles finals. By noon Jewell's Monroe had driven, lobbed, and chopped his way to the climax of a thrilling battle. It was a beautifully placed cross court drive out of the reach of Repps that ended the match by the score of 7-5, 6-2. Repps had previously defeated Carl Frank, a favorite of Missouri Valley in the quarter-finals. Frank had defeated Dugger, Central's ranking singles player, in the first round.

Jewell Doubles Team Defeated In Finals

Bell and Monroe advanced to the finals in doubles play by turning back Culver-Stockton in the first round and the team from Tarkio in the semi-finals. In the finals the Jewell team met Schoene and Holland of Central and after holding a big lead of 6-4, 4-2 fell behind and lost the doubles championship in three sets, 6-4, 5-7, 4-6.

A trophy was given for the singles championship in addition to a gold medal. Silver medals

were received by the Jewell team for being second in doubles.

Prospects Bright For 1936 Season

The approach of the 1936 court wars finds the 1935 squad intact except for the loss of Keller Bell, a two year letterman. The loss of Bell will not be felt too severely since W. R. Marquette, a junior of much experience, and Jim Simrall, sophomore from Kemper Military Academy will be available to the team. Jewell has the opportunity to build a smooth functioning team of three juniors and two sophomores, a fact which should lend color to the team and the season of play besides holding promise of more victorious tennis teams in the future.

All Of Squad Are Under Classmen

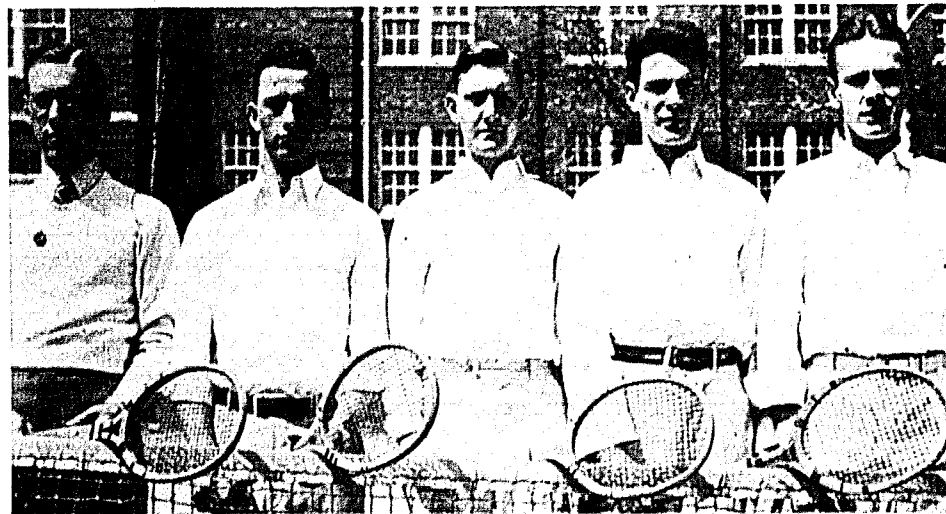
RANKING FOR 1935

Singles:

1. Captain Ed. Monroe
2. Keller Bell
3. Fred Renshaw
4. Estil Bruner
5. Mansel Hennon

Doubles:

1. Monroe and Bell
2. Renshaw and Bruner



1935 SQUAD

BELL CAPTAIN MONROE BRUNER HENNON RENSHAW
(112)

Alpha Psi Omega

In 1932, Beta Pi Cast of Alpha Psi Omega, a national honorary dramatic fraternity, was installed on our campus with five charter members. Since that year, the average membership of ten to twelve has been limited to those who have achieved some distinction in dramatics by required quantity and excellent quality of their work in dramatic art. Each month the group meets at the home of one of the members where some current play is reviewed or some topic relative to drama is discussed.

Alpha Psi Omega was host to several high schools on April 17, conducting a One-Act Play Festival. A formal dinner was held during the spring for the members and the alumni.

OFFICERS

The Grand Director	Dorothy Truex
The Stage-Manager	L. M. Proctor
The Business Manager	Alice Hockett
Sponsor	Virginia D. Rice
Honorary Member	Dr. J. P. Fruit

ACTIVE CAST MEMBERS

Alice Hockett, Dorothy Truex, Arnold Fenner, Judson Palmer, L. M. Proctor.

UNDERSTUDIES

Austin Edwards, Barbara Bogard, Else Byrns, Mary Margaret Westbrook, William Waters.

FRATRES IN URBE

Georgia Bessie Bowman, Charles Hoffman, Inez Yates, Ben Clarke, Genter Stephens.



Fenner Hockett Proctor Truex Waters

William Jewell Players



VIRGINIA D. RICE
Director of Dramatics

One of the largest and most active organizations on the William Jewell campus is the William Jewell Players. Few if any organizations present as true a cross section of the student body as does this group interested in the field of dramatics. More than forty-five members are directed by Miss Virginia D. Rice who is sponsor of the group and director of dramatics. This club brings together students interested in every field of dramatics. Membership is open to any student who indicates a special interest in the art of drama.

The season for the play-goers was opened on November 5 when the Players presented the stirring drama, "Death Takes A Holiday". Many people exclaimed that this production was the most successful ever given at William Jewell. It was undoubtedly the highlight of the dramatic season. The cast:

- | | |
|----------------------|--------------------|
| Cora | Myrtle Bell |
| Fedele | Jack Dudley |
| Duke Lambert | Austin Edwards |
| Alda | Bettie Stigers |
| Duchess Stephanie | Margeret Phillips |
| Princess of San Luca | Dorothy J. Parrott |
| Baron Cesarea | Kimzey Davis |
| Rhoda Fenton | Maxine Keir |
| Eric Fenton | Judson Palmer |
| Corrado | Jack Cooley |
| Grazia | Edina Riddle |
| Prince Sirki | L. M. Proctor |
| Major Whitread | William Waters |

February 18, the charming play, "The Cinderella Man", was given. Though light in comparison with "Death Takes A Holiday", it was cleverly produced and provided an excellent evening's entertainment.

In connection with Alpha Psi Omega, the William Jewell Players brought the noted Avon players to our campus for their splendid presentation of Shakespeare's "Othello". Also in cooperation with Alpha Psi Omega, the Players were hosts to the high schools in the One-Act play contests held April 17.

Much credit for the successful season should go to Miss Rice who is really the moving force behind the presentations. The officers for the year were: President, William Waters; Vice-President, L. M. Proctor; Secretary-Treasurer, Dorothy Donaldson.



- BANES
BELL
BOGARD
BRAMMER
BURROUGHS
CEDERBURG

DAVIS
DAVIDSON
DEDMAN
DUDLEY
EDWARDS
FENNER

GRAVES
HEATON
HESSELL
HOCKETT
HUBER
JOLLY

KEIR
MEDLING
MORGAN
OFFUTT
PAGE
PALMER

PARROTT
PROCTOR
REPERT
RIDDLE
SOLOMON
SMITH

TRESCHER
TRUOX
WAGY
WATERS
WESTBROOK
WHITSITT

The Tatler

To what degree an annual represents a "breathing, pulsing classic" of college youth and activity depends the magnitude and use of the budget. The magnitude of the *Tatler* 1936 and all previous *Tatlers* has been adjusted through the efforts of the business manager and editor and their helpers and advisors. A new step forward has been made in Jewell annual publication affairs. The *Tatler* 1937 will be included in compulsory fees, the result being the availability of a greater amount of money and the discontinuance of the difficult and tiring drive to sell the books.

The editor-in-chief and business manager and staff of the *Tatler* 1936 bemoan the fact that they could not publish an annual on a larger budget. But, they are glad that their successors will be able to function with a larger budget at their disposal. The 1936 staff feel that they have placed in the hands of the students the best book possible for the allotted budget.

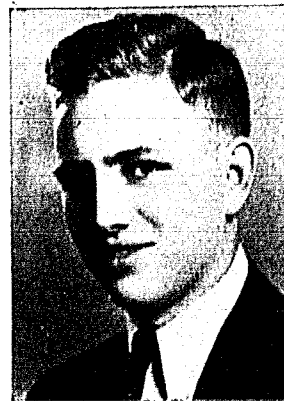
The engraving work in the book was done by the Burger-Baird Engraving Company. Thulane Studio did most of the photography; Bob DeMasters photographed the athletic teams. The snapshots were by George Hale and Ed. Monroe. The cover: by Beckett.

If the editor were to award a tangible prize to a member of the staff, that award would go to Wade Jackson who wrote the athletic copy in such an interesting and complete manner. His copy came in promptly when requested by the editor.



EDWIN MONROE
Editor-in-Chief

JOE AMERY, JR.
Business Manager



COPE DAVIS HALE HALL NEWPORT
PINKERTON MARQUETTE RHODES SMITH

THE STAFF OF THE *TATLER* 1936:

- | | |
|----------------------------|--------------------|
| Editor-in-Chief | Edwin Monroe |
| Business Manager | Joe Amery, jr. |
| Associate Editor | James Cope |
| Assistant Business Manager | Frances Marie Hall |
| Athletic Editors | Wade Jackson |
| | John Newport |
| Contributing Editors | Howard Rhodes |
| | Elenor Davis |
| | Mary L. Pinkerton |
| Book Compositors | W. R. Marquette |
| | Oz Quick |
| Photography | Bob DeMasters |
| | George Hale |
| Student Advisor | C. Lowell Smith |

Editorial Note:

It is a fact that there are potential editors on our campus every year. The student selected to edit the book can publish a good annual. But Jewell should publish exceptional annuals, not merely good ones. True, there have been exceptional annual publications on our campus but too infrequent. The only way, as we see it, for an editor to do his best is to be directly connected with the annual during a year before the year of his editorship. There is no such provision at Jewell. An inexperienced editor painfully goes through the process of getting photographs, compiling data for copy, laying out and composing the book; and then he immediately sees numerous opportunities where he could have improved the book.

Give an editor a chance by placing him in direct contact with the *Tatler* for two years.

William Jewell Christian Association



SADLER BROWNING KEY
LEE DERWACHTER HESTER MURRELL TAYLOR DUNLOP HERGET

"In order to coordinate the existing religious activities on the William Jewell Campus, to promote cooperation and prevent overlapping, and to foster the religious life of the student body" the William Jewell College Christian Association was formed. This brief quotation from the preamble of the constitution of the organization expresses its purpose and its extent.

Its four committees—church relations, deputations, student assemblies, and devotional meetings—are designed to direct the work formerly done by the Y. M. C. A., the Y. W. C. A., the Student Volunteers, and the Baptist Student Union.

The executive committee consists of the chairmen of the four committees. This year they are: William Key, Chairman of the Church Relations Committee; Andrew Moorehead, Chairman of the Deputations Committee; William H. Browning, Chairman of the Student Assemblies Committee; and Ralph Dunlop, Chairman of the Devotional Meetings Committee. William Key acts as chief executive of this committee.

Each committee has twelve members; thus with forty-eight students actively working, it is hoped that the entire student body may be given ample encouragement in any of the activities usually classed as being of a religious nature.

A council, The Council of Christian Activities, through which the Association functions, consists of the student executive group already described, the president of the College and the faculty committee on religious activities, and the Ministers of the local churches.

Dr. H. I. Hester is president of this council, Burnett Magruder is vice-president, and Else Byrns is the secretary.

ADVERTISEMENTS

Burger
Baird
Engraving Co.



GRAPHIC ARTS
BUILDING
KANSAS CITY

SUSTAINED LEADERSHIP
YEAR IN AND YEAR OUT
IS DESIGNING DISTING
UISHED YEARBOOKS AND
MAKING PERFECT
PRINTING PLATES

SINCE 1923
Thirteen years!

The William Jewell Press has been printing annuals for colleges and high schools and during these thirteen years has not had a dissatisfied staff. Each year these annuals are entered in national contests and each book ranks high in its class.

The Press is able to do this because of minute attention given to the printing of these books. A trip through the plant will convince you of this.

We wish to thank the staff of this annual for its cooperation. It is through cooperation that this plant is able to print the type of annual of which you will be proud.

The Press has extended its service to the staffs of year books with a complete photographic and photo-engraving plant.

3 IN 1 *Photography*
Photo-Engraving SERVICE
Printing

THE WILLIAM JEWELL PRESS

HARVEY J. RAY, Manager
LIBERTY, MISSOURI

Liberty Flower Shop

PHONE 466
WEST SIDE SQUARE

Stay at the
COLONIAL HOTEL

When visiting William Jewell
Tasty Foods at Tempting Prices in the
COFFEE SHOP
McCARTNEY BARTONS

CLAY COUNTY ABSTRACT CO.

MARTIN LAWSON, President
JAMES S. SIMBALL, Vice-President
ALAN F. WHEBRITT, Secretary
C. H. COPPINGER, Treasurer and Manager

Liberty Marketing Co.

GRAIN, HAY, FLOUR, FEED & COAL

Liberty, Mo. Phone 841

Compliments of
**ATLANTIC AND PACIFIC
FOOD STORE**

LIBERTY, MISSOURI

H. R. BANKS LUMBER CO.

ALL KINDS OF BUILDING MATERIAL
A Complete Line of Cook's Paints and Brushes

LIBERTY, PHONE 389 MISSOURI

A. L. McGINNESS

DRUGGIST

Spalding Baseballs
Johnson's Candies
A. D. S. Supplies
Rexall Remedies
Ansco Films

Phone 58 Liberty, Mo.

LIBERTY GROCERY

Fresh Meats and Groceries

C. B. GIBSON, Mgr.

LADIES' AND CHILDREN'S APPAREL
AND MILLINERY

TOGR'Y SHOP

N. CHRISMAN

McARTHUR'S STORE

STATIONERY - - CANDIES

North Side Square

Compliments of

THE
FRANKLIN TAVERN

**CITIZENS
BANK**

The **PLAZA THEATRE**

House of Good Shows

WE AIM TO PLEASE

QUALITY MATERIALS
GUARANTEED
QUALITY WORK

AMERICAN

SHOE

SHOP

"As We Go Forward"

Some day you'll need every bit of that
"Financial Preparation" that you are creating today.

... create your
"FINANCIAL PREPARATION"
by opening an account at

THE FIRST NATIONAL BANK

of

Liberty, Missouri

HAMBURGER INN

MASSEY'S CAFE

**CONSOLIDATED
CLEANERS**

MYALL & MYALL

We Specialize in Hosiery
PHONE 92 NORTH SIDE SQUARE

WELCOME

When in Kansas City visit our store,
Make it your Headquarters--

Books Bibles Testaments

Of All Publishers

Cooperation is the key to success,
We solicit your cooperation--

The Judson Press

W. J. Smith, Manager

1107 McGee St. Kansas City, Mo.

PHOTOGRAPHS

FRAMES

Thulane

Photographs of class and distinction

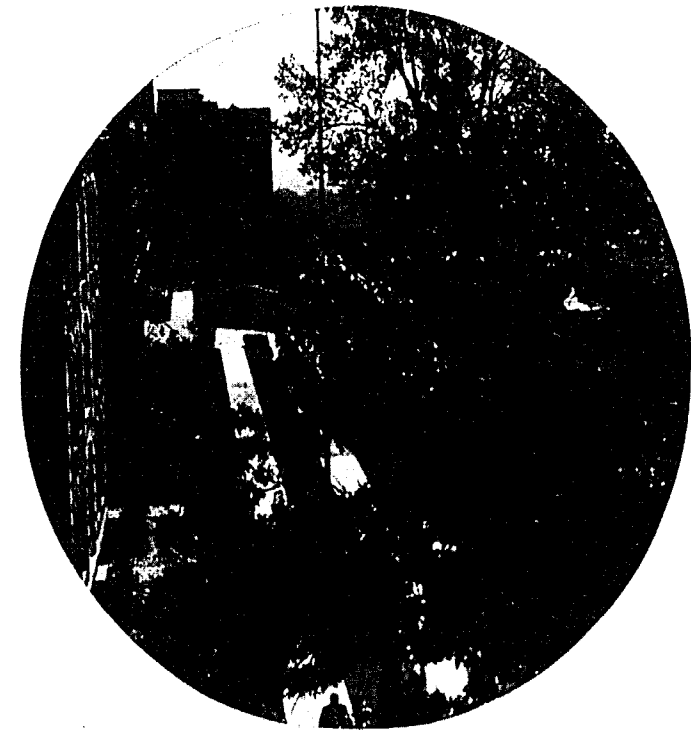
at very moderate

prices

Grand 1440

Lobby: Hotel Baltimore

Kansas City, Mo.



The program of William Jewell College has always included the highest scholastic standards and methods—
Ample opportunity is afforded for the development of personality—
Care is given to the cultivation of character and the qualities of leadership—

This program of education accounts, in a measure at least, for the success of

WILLIAM JEWELL COLLEGE
GRADUATES

HUGHES-McDONALD
DRY GOODS CO.

Specialists in
SILK HOSIERY, WOMEN'S COATS
AND DRESSES

Frod G. Barnby, Mgr. Russell D. Ray, Editor

The LIBERTY CHRONICLE

A Paper Devoted to the Interests of
LIBERTY and CLAY COUNTY

PHONE 603 34 SOUTH MAIN

Established 1867 Nationalized 1933

THE
NATIONAL COMMERCIAL
BANK

LIBERTY MISSOURI

RICHMAN
BROTHERS

ALL \$22.50
Suits - Topcoats - Tuxedos

1025-1027 MAIN
KANSAS CITY. MISSOURI

Congratulations to
1936 TATLER
HAMILTON GROCERY
LIBERTY, MO. 12 AND 13

Compliments of
SAFEWAY STORES

1 East Kansas Phone 309

STUDENTS! Your patronage has been appreciated throughout 1935. It is our aim to merit this consideration during 1936.

You have made us the "Mecca of Liberty," the center of the political embroglio; headquarters for the Hot Stove League; rostrum of the grandstand quarterback; rendezvous where Greek may meet Greek; and a place at which anyone may meet everybody!

BRANT'S

Compliments
of

Miller Barbecue



JAMES COSTELLO LUMBER CO.

All Kinds of Building Material
Over 50 years of quality and service

Phone 104 115 S. Main St.

A. I. D.
SOUTHSIDE PHARMACY
Drugs - - - Cosmetics
Soda Fountain
SOUTH SIDE SQUARE
PHONE 71 LIBERTY, MO.

Simrall Clothing Co.

Curlee Clothes — Stetson Hats

Wilson Bros. Shirts, etc.

HEADQUARTERS FOR
WILLIAM JEWELL STUDENTS

Compliments of

WHITE WAY INN

MRS. G. AUDLEY 209 E. KANSAS

The Eastern Baptist
Theological Seminary

IN THE HEART OF PHILADELPHIA

- Conservative in Theology
- Accurate in Scholarship
- Evangelistic in Service
- Devotional in Spirit

Courses leading to degrees in—

Theology
Religious Education
and
Sacred Music

For information address

PRES. AUSTIN K. dBLOIS
1808-1818 South Rittenhouse Square
PHILADELPHIA, PA.

CHURCH BEAUTY SHOP

Up-to-the-Minute Hairdressing and Permanent
Waving Our Specialties
TEL. 420

Rollins Hosiery

LINGERIE - DRESSES - HATS
Mr. Marie Duncan Fisher & Miss Helen Duncan

THE FERNDLELL STORE
QUALITY FOODS
PITTS GROCERY CO.

Phone 176 5 N. Water St. Phone 177

ELECTRIC SHOE SHOP

The best place to get your shoes repaired
Across from P. O. Liberty, Mo.

"The Home of
Aunt Kate's Sausage"

W. B. SCHNEIDER
MEAT COMPANY

FOOD SUPPLIES OF QUALITY

510-520 Walnut Street
KANSAS CITY, MO.

Since 1900

Since 1917

WE
APPRECIATE
YOUR
PATRONAGE

Co-Op Book Store

Fred T. Renshaw, Mgr.

LIFE INSURANCE

A Bulwark of Safety

Because

Children must be free from the struggle for existence;

Family ties must be held together and homes made secure with the necessities of life;

Youth must be educated to meet the demands necessary for entering into modern business;

Every man and woman desires safety and security against the vicissitudes of life;

Life Insurance has built up a Bulwark of Safety, taking many of the "ifs" out of life and making possible the fulfillment of our most previous desires.

KANSAS CITY LIFE INSURANCE COMPANY

Home Office - - 3520 Broadway

KANSAS CITY, MISSOURI